

MASTER COPY
DO NOT DESTROY

CONTROL PANEL ASSEMBLY

AX-560

CONTROL PANEL ASSEMBLY

AX-560

TABLE OF CONTENTS

<u>Paragraph</u>		<u>Page</u>
1	Description of Equipment.	1
2	Installation.	1
3	Operating Instructions.	1
4.	Maintenance	3
5	Parts List.	3

LIST OF ILLUSTRATIONS

<u>Figure</u>		<u>Page</u>
1	Control Panel AX-560.	0
2	Rear Panel, AX-560.	2
3	Schematic Diagram, AX-560	5

1. DESCRIPTION OF EQUIPMENT.

Control Panel AX-560 (figure 1) is a remote control unit consisting of two switches (STANDBY/OPERATE and TEST KEY) mounted on a 1-3/4-inch by 19-inch front panel; the unit is used with associated equipment. Two terminal boards (TB1 and TB2) are located on the rear of the panel, and provide electrical connections as required by the particular installation.



9812-1

Figure 1. Control Panel, AX-560

2. INSTALLATION.

The AX-560 is designed for installation in a standard 19-inch wide equipment rack. The unit is checked at the factory and is normally mounted in an equipment rack prior to shipment. Upon receipt of the equipment, uncrate it carefully and inspect for damage that may have occurred in transit. With respect to damage to the equipment for which the carrier is liable, The Technical Materiel Corporation will assist in describing methods of repair and the furnishing of replacement parts.

2. INSTALLATION (CONT).

All electrical connections are made at terminal boards TB1 and TB2 (see figure 2). Refer to the schematic diagram shown in figure 3 and to the appropriate system manual for AX-560 installation instructions.

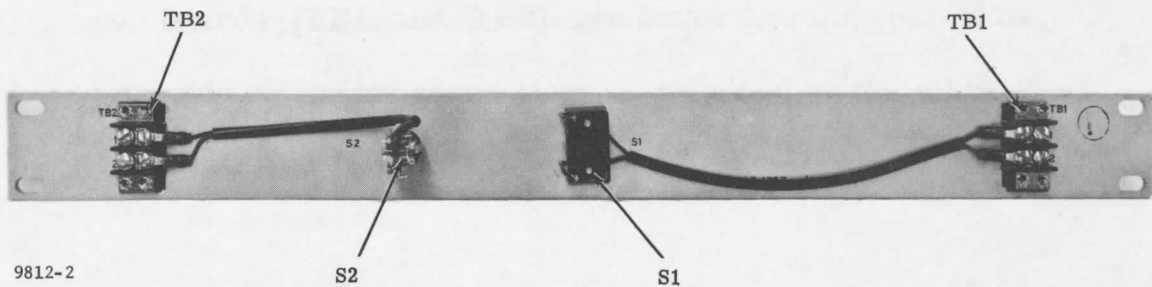


Figure 2. Rear Panel, AX-560

3. OPERATING INSTRUCTIONS.

Operation of the two switches (STANDBY/OPERATE and TEST KEY) of the AX-560 is obvious.

4. MAINTENANCE.

Except for checking the AX-560 for general cleanliness, secure connections, and proper switch operation, no maintenance is required.

5. PARTS LIST.

The parts list presented in this section is a cross-reference list of parts identified by reference designation and TMC part number. In most cases, parts appearing on schematic diagrams are assigned reference

659.30-12

5. PARTS LIST (CONT)

designations in accordance with MIL-STD-16. Wherever practicable, the reference designation is marked on the equipment, close to the part it identifies. In most cases, mechanical and electro-mechanical parts have TMC part numbers stamped on them.

To expedite delivery when ordering any part, specify the following:

- a. Generic name.
- b. Reference designation.
- c. TMC part number.
- d. Model and serial numbers of the equipment containing the part being replaced; this can be obtained from the equipment nameplate.

For replacement parts not covered by warranty (refer to the warranty sheet in front of manual), address all purchase orders to:

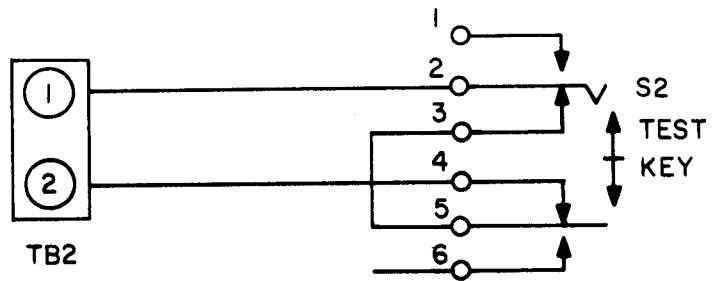
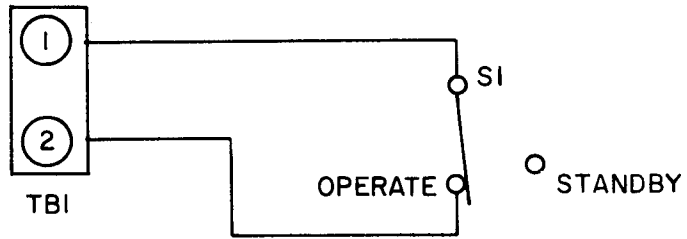
The Technical Materiel Corporation
Attention: Sales Department
700 Fenimore Road
Mamaroneck, New York

PARTS LIST

for

CONTROL PANEL, AX560

REF SYMBOL	DESCRIPTION	TMC PART NUMBER
S1	SWITCH, LEVER	SW186-3
S2	SWITCH, TOGGLE: SPST; 6 amps, 125 VAC; 28° angle of throw; solder lug terminals.	ST12A
TB1	TERMINAL BOARD, BARRIER: 2 terminals; 6-32 thd. x 1/4" long binder head screws; phenolic black bakelite.	TM102-2
TB2	Same as TB1.	
W1	LEAD, ELECTRICAL	CA409-22-9.00
W2	LEAD, ELECTRICAL	CA409-63-9.00
W3	LEAD, ELECTRICAL	CA409-22-7.00
W4	LEAD, ELECTRICAL	CA409-63-7.00



9812-3

Figure 3. Schematic Diagram, AX-560