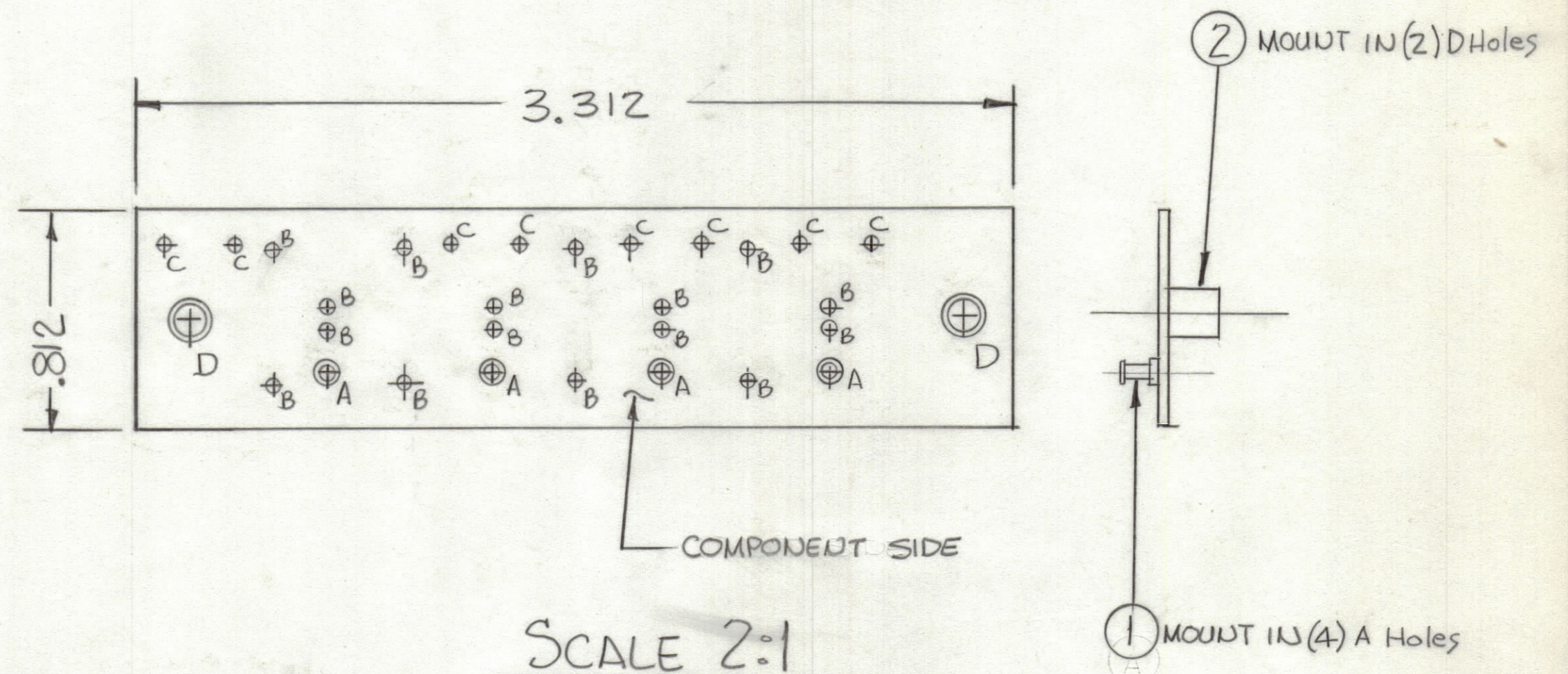


| REVISIONS | | | | | | |
|-----------|-----|---------------------------------|--------|----------|-------|-----------|
| ZONE | LTR | DESCRIPTION | DATE | E.M.N.NO | DRAFT | CHKD APPD |
| | XI | B DIA Was .062 DIA | 7-5-78 | | | |
| | Ø | ORIGINAL RELEASE FOR PRODUCTION | 7-7-78 | ~ | RL | WJB * |



NOTE:

FABRICATION NOTES SEE S735

1. OVERALL MATERIAL THICKNESS .062±.006 AS PER RP3-1, 3.2.
2. CONDUCTOR PATTERN TO BE COPPER FOIL AS PER RP4-1.
3. MATERIAL: GIO GLASS EPOXY LAMINATE 2 OZ COPPER CLAD.
4. ALL HOLES TO BE PLATED-THRU AS PER 8.9.5.

| Hole | Description | Req. |
|------|-------------|------|
| A | .081 DIA | 4 |
| B | .052 DIA | 16 |
| C | .042 DIA | 8 |
| D | .189 DIA | 2 |

(REF CK2191)

| QTY. REQ. | ITEM | PART NO. | DESCRIPTION | SYMBOL |
|-----------|------|----------|----------------|--------|
| 2 | Z | TE164-1 | STANDOFF | D |
| 4 | I | TE127-2 | TERMINAL, STUD | A |

LIST OF MATERIAL

| | | | |
|---|-----------|--|----------------|
| UNLESS OTHERWISE SPECIFIED DIMENSIONS ARE IN INCHES AND INCLUDE CHEMICALLY APPLIED OR PLATED FINISHES | | FINAL APPROVAL * <i>[Signature]</i> | DATE 7/5/78 |
| TOLERANCES ON | | MECH. DES. | DATE |
| DECIMALS | FRACTIONS | ELECT. DES. | DATE |
| .X ± .05 | ± 1/64 | CHECKED | DATE |
| .XX ± .01 | ANGLES | DRAWN | DATE |
| .XXX ± .005 | ± 0° -30' | <i>[Signature]</i> | 6-6-78 |

| | | | |
|--|-----------------|---------|-------|
| THE TECHNICAL MATERIEL CORP. MAMARONECK, NEW YORK | | | |
| PRINTED CIRCUIT Bd., INDICATORS | | | |
| SIZE | CODE IDENT. NO. | DWG NO. | ISSUE |
| C | 82679 | PC802 | Ø |
| SCALE | SHEET | | OF |

| | | |
|--|------------------|-----------|
| 1 | (LOCKHEED) AX789 | A5756 |
| QTY / UNIT | MODEL USED ON | ASS'Y NO. |
| APPLICATION | | |
| CODE | | |
| MATERIAL | | |
| FINISH | | |
| <p>NOTICE TO PERSONS RECEIVING THIS DRAWING</p> <p>THE TECHNICAL MATERIEL CORPORATION claims proprietary right in the material disclosed hereon. This drawing is issued in confidence for engineering information only and may not be reproduced or used to manufacture anything shown hereon without permission from THE TECHNICAL MATERIEL CORPORATION to the user. This drawing is loaned for mutual assistance and is subject to recall at any time.</p> | | |