

IF IT IS FOUND DESIRABLE TO CHANGE ANY TOLERANCE OR OTHER DETAIL SPECIFIED ON THIS DRAWING NOTIFY THE PURCHASER PROMPTLY.

MAXIMUM ALLOWABLE TOLERANCES HAVE BEEN DETERMINED AND DEVIATIONS WILL BE CAUSE FOR REJECTION. REMOVE ALL BURRS AND SHARP EDGES

M-S-10094C

USED ON

MODEL

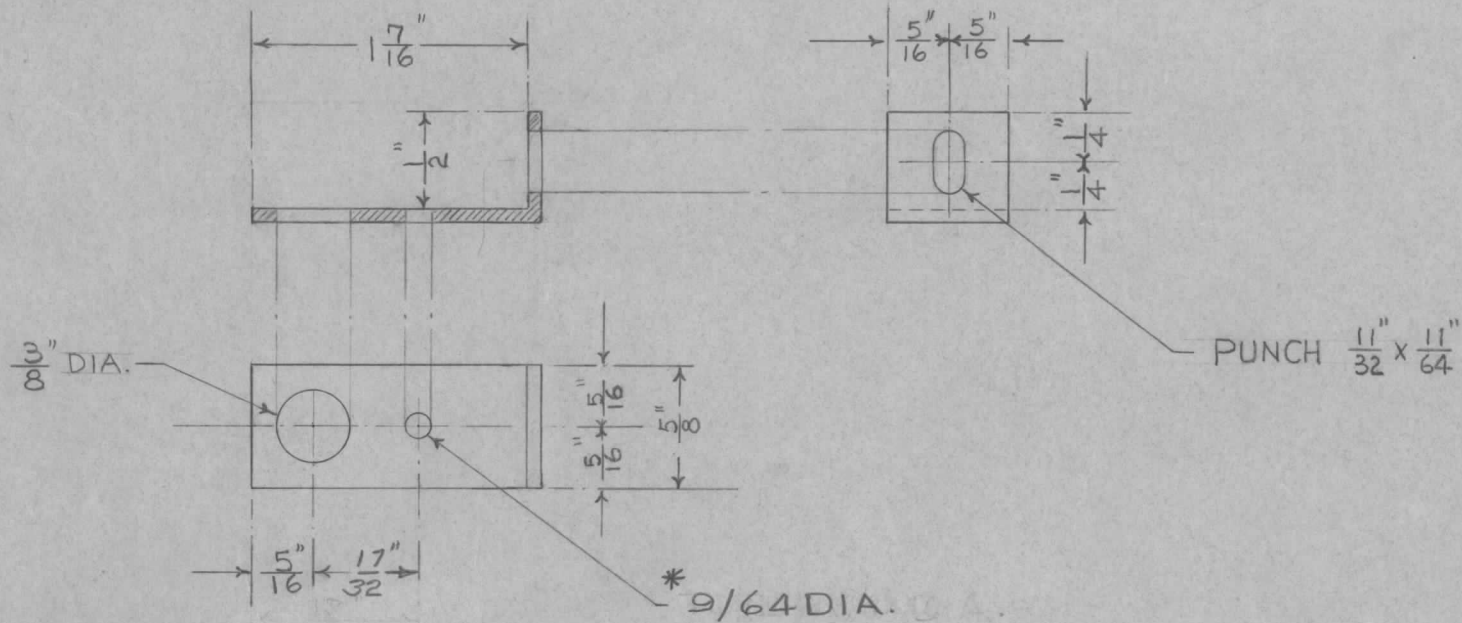
PROJECT NO.

ASS'Y. NO.

DATE

AMC-6-2
AMC-6-3

10/6/55



* $\frac{9}{64}$ DIA.

REQ.	ITEM	PART NO.	DESCRIPTION	SYMBOL
		.064 SHEET	TMC (Canada) LIMITED OTTAWA ONTARIO	BRACKETS - SWITCH
		STOCK SIZE		
		ALUMINIUM .01		
		MATERIAL	WEIGHT PER PC.	
		575-H32		
		TYPE & TEMPER		
		HEAT TREAT. SPEC.		
		FINISH & SPEC. NO.		

ISSUE	ITEM	CHANGED FROM	DATE	CN. NO.	DRAFTS	CHECKER	ENG. APP.
C		13/16 DELETED 17/32 ADDED	2/3/65	14588	AVV.	JPC	
B	1	STOCK SIZE WAS .062	Sept 24/62		JPC		
A		* $\frac{9}{64}$ DIA. WAS PUNCH 1/8 D.	MAY 29/61		JPC		

TOLERANCES		SCALE
ALL OTHERS	DEC. DIM. \pm FRAC. DIM. \pm $\frac{1}{64}$ " ANGULAR DIM. \pm	DRILL, PUNCH, COMMERCIAL STOCK SIZES AND MANUFACTURERS TOLERANCES ARE NOT INCLUDED.

DRAWN: *[Signature]*
 ELEC. DES. APP.: *[Signature]*
 MECH. DES. APP.: *[Signature]*
 CHECKED: *[Signature]*
 FINAL APPROVAL: *[Signature]*
 MS-10094C