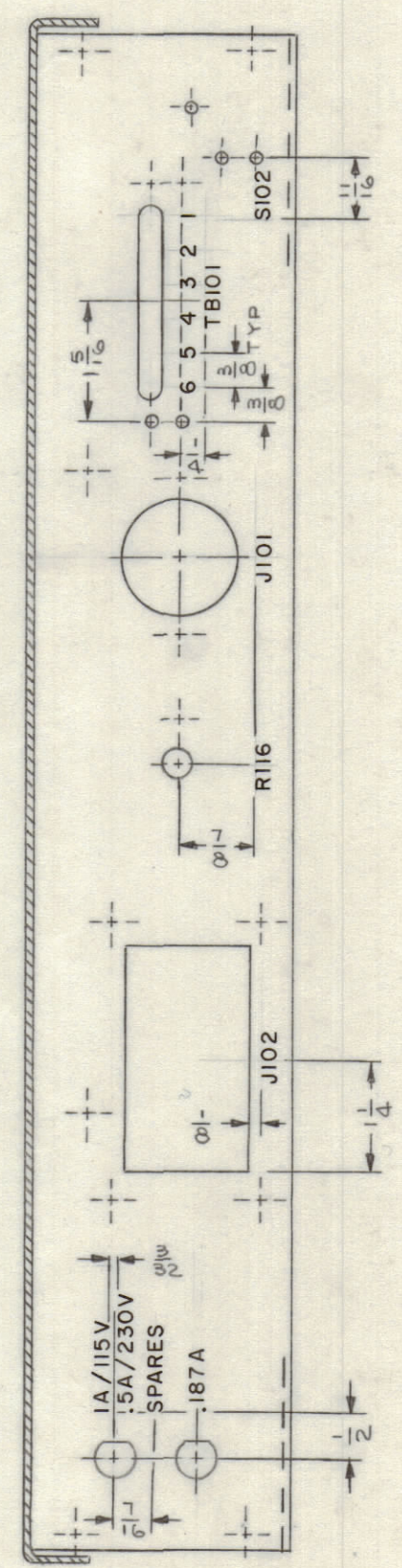
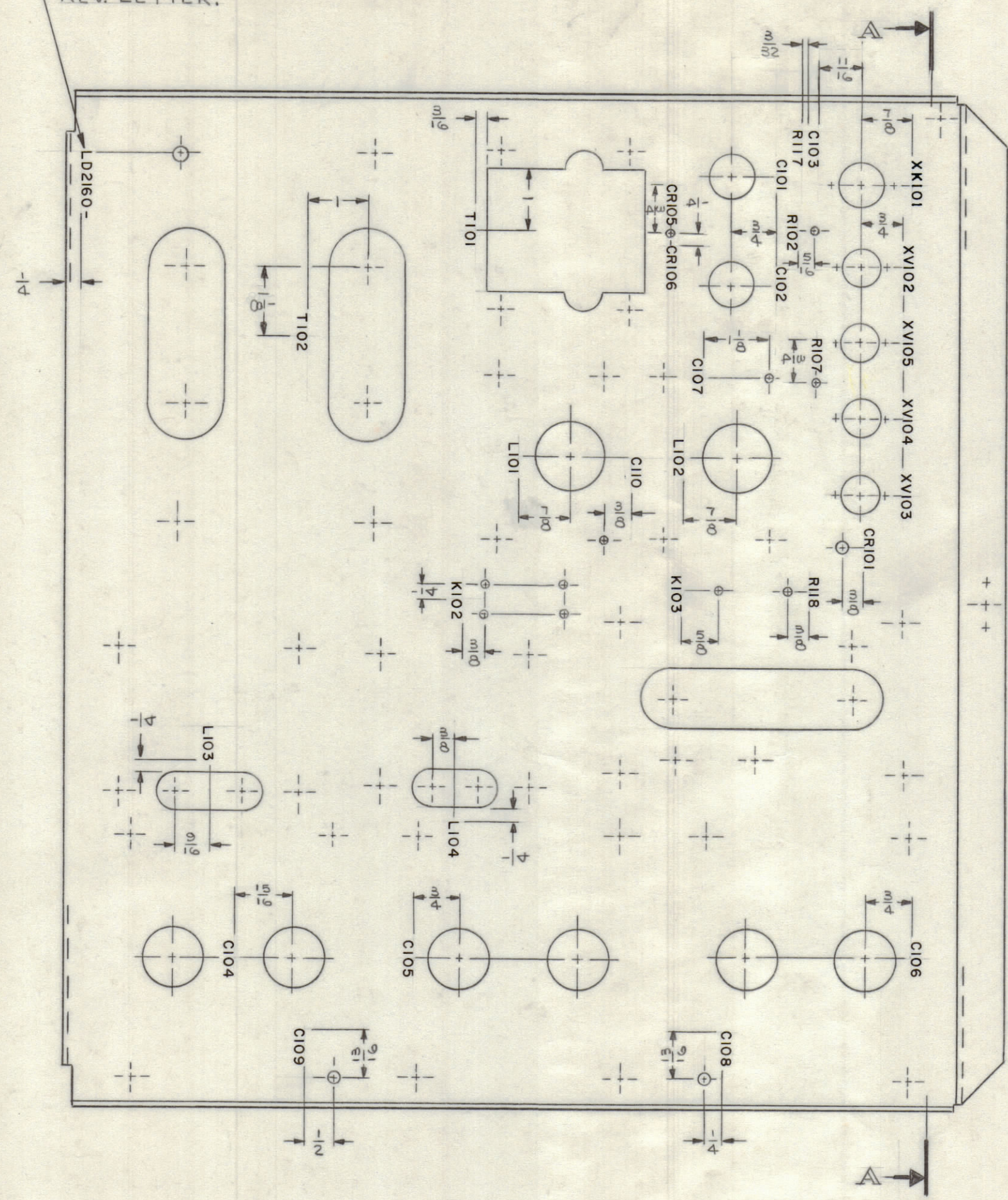


REVISIONS						
SYM	ZONE	DESCRIPTION	DATE	E.M.N.NO.	DRAFT	CHKD APPD
X		EXP. RELEASE	1/9/66		JL	
Ø		ORIGINAL RELEASE FOR PRODUCTION	3/20/67	Ø	CV	

MARK TMC PT. NO. W/LATEST REV. LETTER.



VIEW A-A

- UNLESS OTHERWISE SPECIFIED -

- 1-MARKING PROCESS: AS PER TMC SPECIFICATION S-727.
- 2-LETTERING: 1/8 HIGH BLACK GOTHIC, LOCATED AS SHOWN.

MAXIMUM ALLOWABLE TOLERANCES HAVE BEEN DETERMINED AND ANY DEVIATIONS WILL BE CAUSE FOR REJECTION.

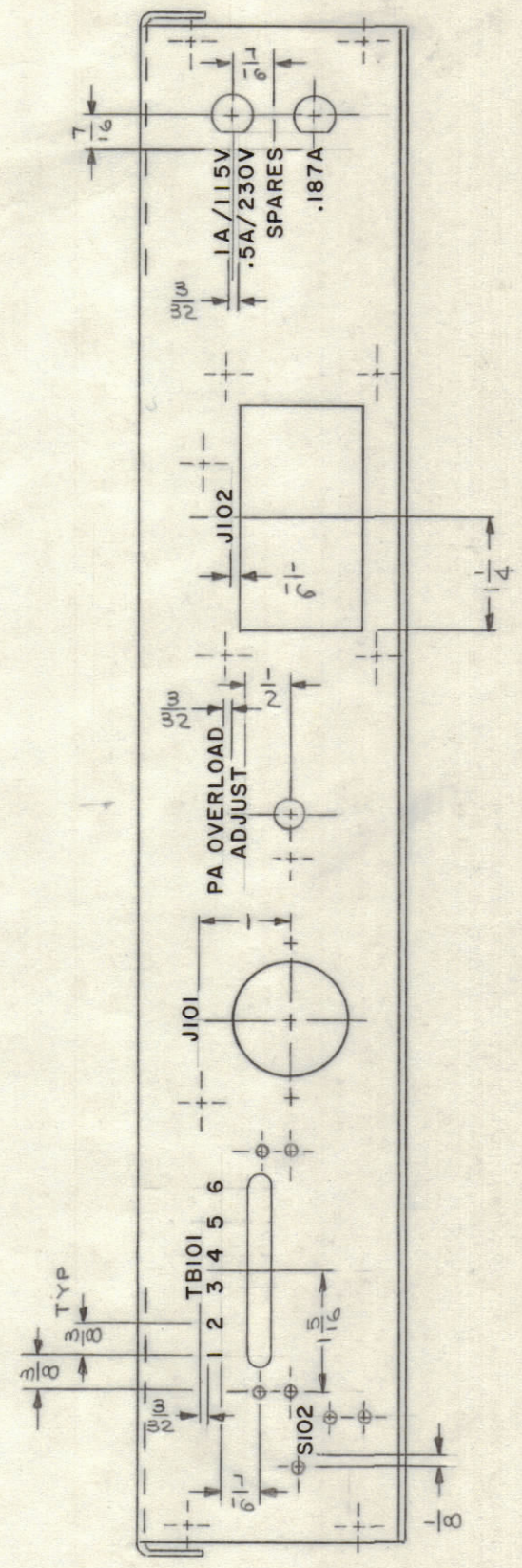
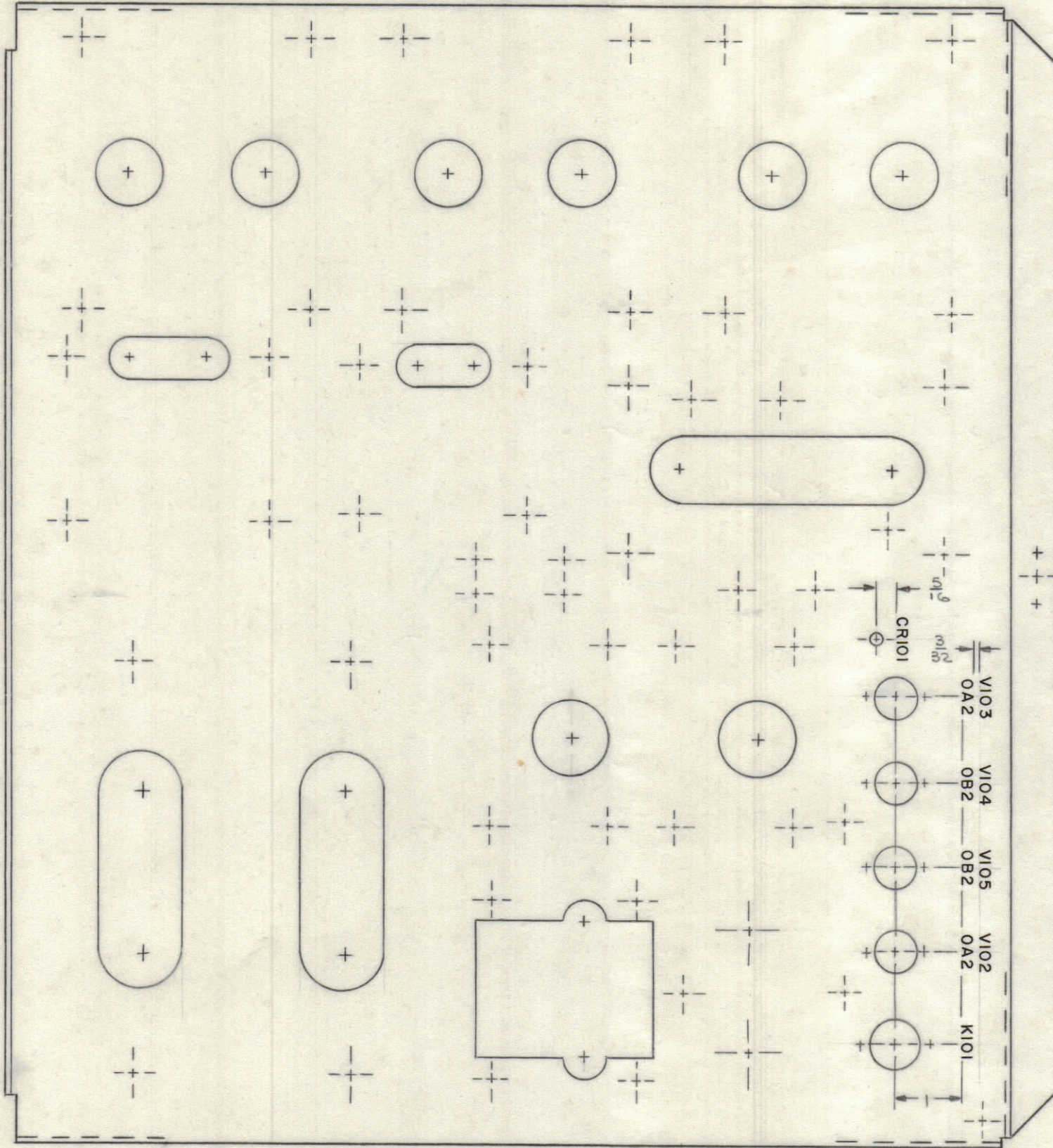
REF.: MS5076

QTY REQ	ITEM	PART NO.	DESCRIPTION	SYMBOL
L. BUTLER BILL OF MATERIAL				
FINAL APPROVAL		DATE	THE TECHNICAL MATERIEL CORP. MAMARONECK, NEW YORK  MARKING - CHASSIS ELECT. MAIN (PSP-350C)	
MECH. DES.		DATE		
ELECT. DES.		DATE		
CHECKED		DATE		
DRAWN		DATE		
MATERIAL				
FINISH				
APPROVED FOR BUSHIPS			CODE	SIZE
CONTRACT NO.			82679	C
			DWG. NO.	LD2160
			SCALE	1/2
			SHEET	1 OF 2

H  
G  
F  
E  
D  
C  
B  
A

H  
G  
F  
E  
D  
C  
B  
A

REVISIONS						
SYM	ZONE	DESCRIPTION	DATE	E.M.N.O.	DRAFT	CHKD APPD
X		EXP. RELEASE	10/4/66		JL	
Ø		ORIGINAL RELEASE FOR PRODUCTION	3/20/67	Ø	CV	



- UNLESS OTHERWISE SPECIFIED -

- 1- MARKING PROCESS: AS PER TMC SPECIFICATION S-727.
- 2- LETTERING: 1/8 HIGH BLACK GOTHIC, LOCATED AS SHOWN.

UNLESS OTHERWISE SPECIFIED  
DIMENSIONS ARE IN INCHES  
TOLERANCES ON  
FRACTIONS DECIMALS ANGLES  
±1/64 ±.005 ±1/2°

MAXIMUM  
ALLOWABLE TOLERANCES HAVE BEEN  
DETERMINED AND ANY DEVIATIONS  
WILL BE CAUSE FOR REJECTION.

REF.: MS 5076

QTY REQ	ITEM	PART NO.	DESCRIPTION	SYMBOL	
	L. BUTLER BILL OF MATERIAL				
	FINAL APPROVAL	DATE	THE TECHNICAL MATERIEL CORP. MAMARONECK, NEW YORK		
	MECH. DES.	DATE			
	ELECT. DES.	DATE			
	CHECKED	DATE			
	DRAWN	DATE	MARKING-CHASSIS, ELECT., MAIN (PSP-350C)		
	J. LESHINSKI	10/4/66			
	APPROVED FOR BUSHIPS	CODE	SIZE	DWG. NO.	ISSUE
		82679	C	LD2160	Ø
	CONTRACT NO.	SCALE 1/2		SHEET 2 OF 2	