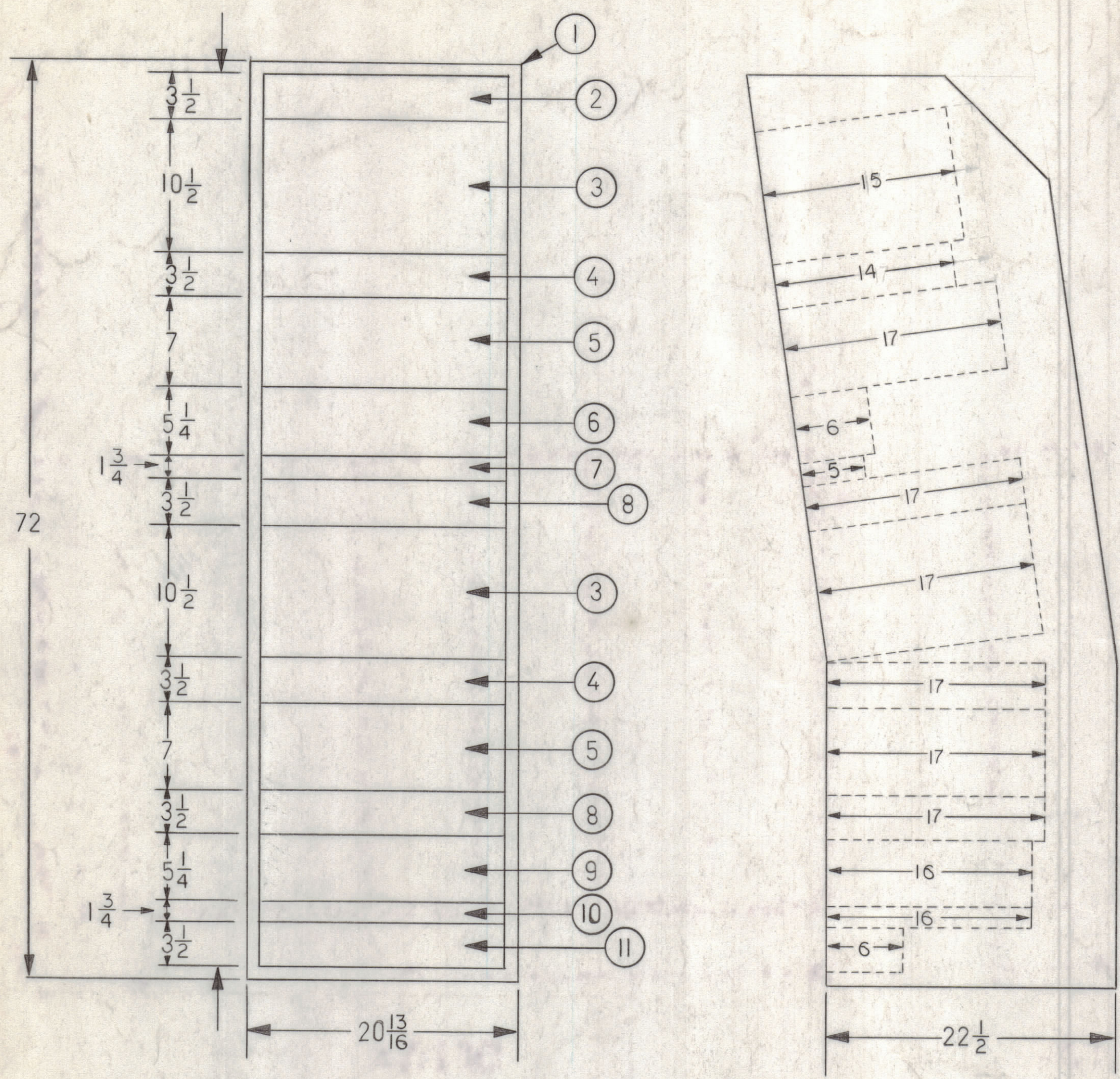


REVISIONS						
ZONE	LTR	DESCRIPTION	DATE	E.M.N.NO	DRAFT	CHKD APPD



NOTES:

1. INTERPRET IN ACCORDANCE WITH MIL-D-1000
2. INPUT POWER: 115VAC; 1 PHASE; 60CPS
3. POWER CONSUMPTION: 1500 WATTS, TOTAL FOR UNIT 14
4. WEIGHT: 811 LBS; TOTAL FOR UNIT 14 DOES NOT INCLUDE 530 LBS OF GFE
5. FOR PERFORMANCE, REFER TO TMC SPECIFICATION 40S14A056
6. FOR TECHNICAL SPECIFICATIONS, REFER TO S66-94
7. FOR SPARES, MAINTENANCE AND INSTALLATION REFER TO INSTRUCTION MANUAL.

QTY REQ	NOMEN OR DESC	CODE IDENT	FIND NO.
1	AUXILIARY POWER PANEL	APP-16	11
1	PANEL BLANK	MS8200-1	10
1	DIVERSITY VOICE COMBINER	DVC-1	9
2	TELETYPE CONVERTER	CFA2A	8
1	AUDIO PATCH PANEL	AJP-1	7
1	INTERCOM PANEL	AX8023	6
2	SIDEBAND SELECTOR	SBS-9	5
2	FREQUENCY CONTROL	AFC-2A	4
2	RECEIVER, RADIO	GFE R-390A/URR	3
1	PANEL, BLANK	MS8200-2	2
1	CABINET ELEC EQUIP	RAK 153-14A	1

FRONT VIEW

PROFILE

I	UNIT 14A	
QTY / UNIT	MODEL USED ON	ASS'Y NO.
APPLICATION		
CODE		
<small>NOTICE TO PERSONS RECEIVING THIS DRAWING</small> <small>THE TECHNICAL MATERIEL CORPORATION claims proprietary right in the material disclosed hereon. This drawing is issued in confidence for engineering information only and may not be reproduced or used to manufacture anything shown hereon without permission from THE TECHNICAL MATERIEL CORPORATION to the user. This drawing is loaned for mutual assistance and is subject to recall at any time.</small>		

UNLESS OTHERWISE SPECIFIED DIMENSIONS ARE IN INCHES AND INCLUDE CHEMICALLY APPLIED OR PLATED FINISHES

TOLERANCES ON

DECIMALS	FRACTIONS
.X ± .05	± 1/64
.XX ± .01	ANGLES
.XXX ± .005	± 0° -30'

QTY. REQ.	ITEM	PART NO.	DESCRIPTION	SYMBOL
LIST OF MATERIAL				
FINAL APPROVAL		DATE	THE TECHNICAL MATERIEL CORP.	
MECH. DES.		DATE	MAMARONECK, NEW YORK	
ELECT. DES.		DATE	STMCC MODEL TNOLRMPC-WING	
CHECKED		DATE	P/O RMPC-1	
DRAWN		DATE	SOURCE CONTROL DWG	
MATERIAL			SIZE	CODE IDENT. NO. DWG NO. ISSUE
FINISH			C	82679 ID8023
			SCALE 1/8" = 1"	SHEET 1 OF 3

4

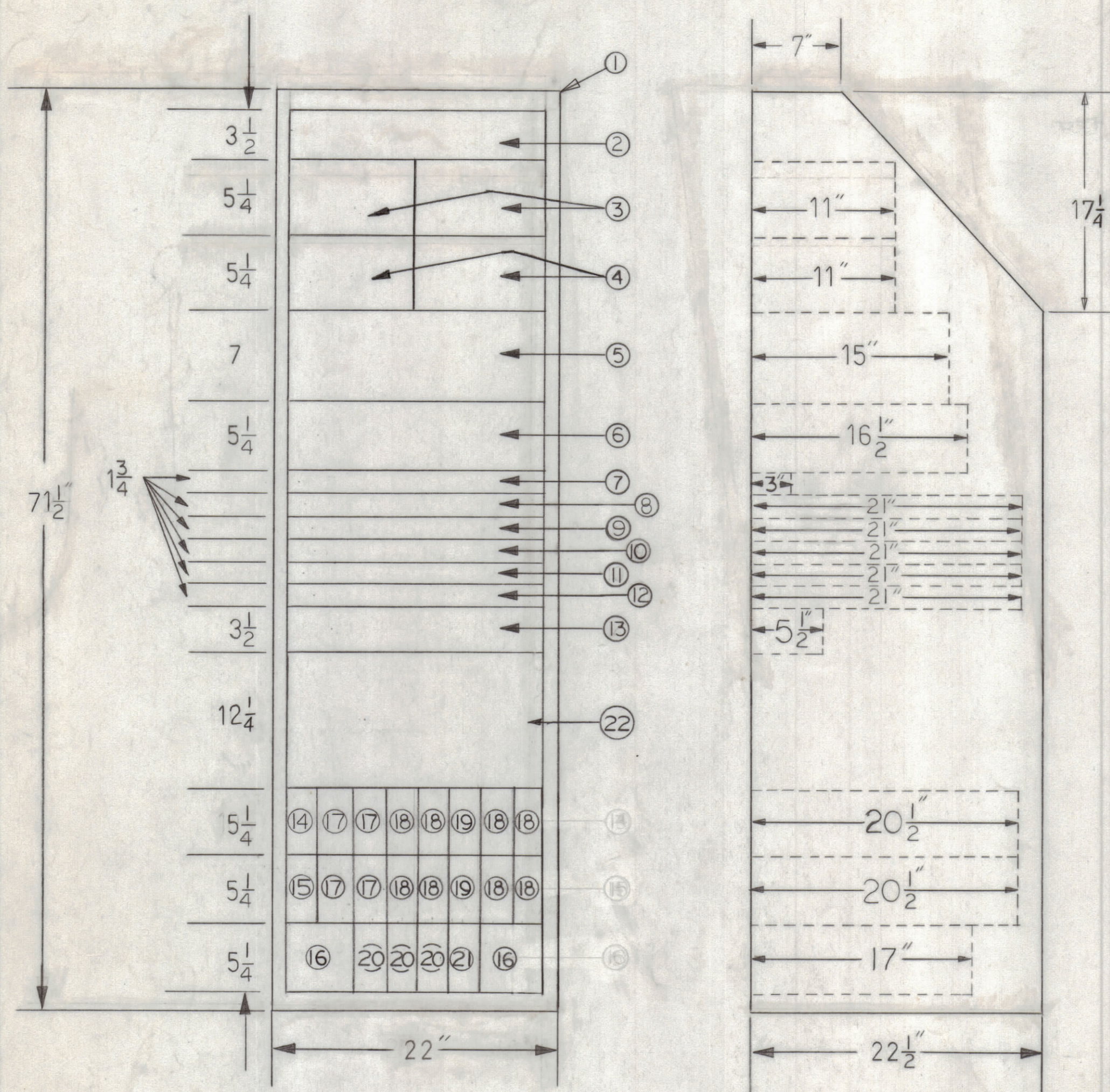
3

2

1

REVISIONS						
ZONE	LTR	DESCRIPTION	DATE	E.M.N.O.	DRAFT	CHKD APPD

NOTES
 1. INTERPRET IN ACCORDANCE WITH MIL-D-1000
 2. UNIT POWER LEVEL, POWER SUPPLY
 3. POWER CONSUMPTION ESTIMATE TOTAL FOR UNIT 14
 4. SUBSTITUTION IN ACCORDANCE WITH MIL-D-1000



FRONT VIEW

PROFILE

QTY REQ	NOMEN OR DESC	CODE IDENT	IDENT NO.	FIND NO.
1		GFE	KW7	22
1	P. S. MODULE	102A1	176	21
3	CLOCK MODULE	"	117	20
2	COMP. MODULE	"	310	19
8	REC. MODULE	"	302	18
4	SENDING MODULE	"	301D	17
2	SYN REGEN REPEATER MODULE	"	174	16
1	MODULE EXTENDER	"	231	15
1	LINE AMPLIFIER	"	325B	14
1	CONTROL PANEL	"	SR233	13
1	DC JACK FIELD	"	367	12
1	VF JACK FIELD	"	"	11
1	VF JACK FIELD	"	"	10
1	DC JACK FIELD	"	"	9
1	DC JACK FIELD	"	"	8
1	METER PANEL	"	SR127B	7
1	PATTERN GENERATOR	"	819	6
1	DATA DISTORTION ANALYZER	"	820B	5
2	DEMULTIPLEXER	"	124	4
2	MULTIPLEXER	"	123	3
	BLANK PANEL			2
1	CABINET, ELEC EQUIP	102A1	141HAX	1

QTY. REQ.	ITEM	PART NO.	DESCRIPTION	SYMBOL
LIST OF MATERIAL				
FINAL APPROVAL: <i>[Signature]</i> DATE: 3-4-69 MECH. DES. DATE: 3/4/68 ELEGT. DES. DATE: 1/21/68 CHECKED: <i>[Signature]</i> DATE: 2-27-68 DRAWN: <i>[Signature]</i> DATE:				
THE TECHNICAL MATERIEL CORP. MAMARONECK, NEW YORK ST MC MODEL NO. RMPC-1111G P/O RMPC-1 SOURCE CONTROL DWG.				
SIZE	CODE IDENT. NO.	DWG NO.	ISSUE	
C	82679	ID8023	1	
SCALE 1/8" = 1"			SHEET 2 OF 3	

1	UNIT 14 B	
QTY / UNIT	MODEL USED ON	ASS'Y NO.
APPLICATION		
CODE		
NOTICE TO PERSONS RECEIVING THIS DRAWING THE TECHNICAL MATERIEL CORPORATION claims proprietary right in the material disclosed hereon. This drawing is issued in confidence for engineering information only and may not be reproduced or used to manufacture anything shown hereon without permission from THE TECHNICAL MATERIEL CORPORATION to the user. This drawing is loaned for mutual assistance and is subject to recall at any time.		

UNLESS OTHERWISE SPECIFIED DIMENSIONS ARE IN INCHES AND INCLUDE CHEMICALLY APPLIED OR PLATED FINISHES

TOLERANCES ON
 DECIMALS: .X ± .05, .XX ± .01, .XXX ± .005
 FRACTIONS: ± 1/64, ANGLES: ± 0° -30'

MATERIAL
 FINISH

4

3

2

1

ID 8023

A

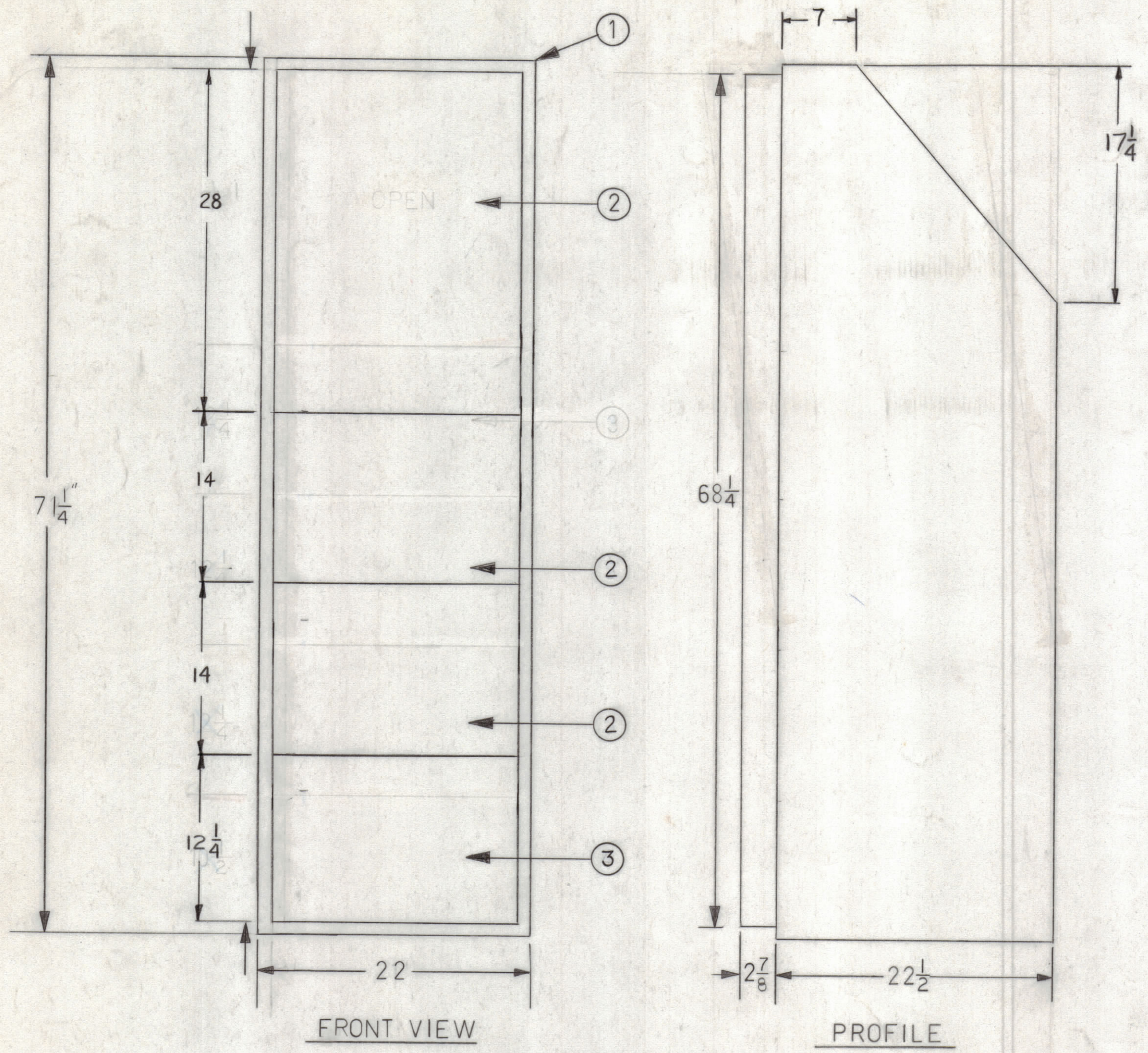
4

3

2

1

REVISIONS						
ZONE	LTR	DESCRIPTION	DATE	E.M.N.NO	DRAFT	CHKD APPD



- NOTES:
1. INTERPRET IN ACCORDANCE WITH MIL-D-1000.
 2. INPUT POWER: 115 VAC, 1 PHASE, 60 CPS.
 3. POWER CONSUMPTION: 1500 WATTS TOTAL FOR UNIT 14.
 4. WEIGHT: 184 LBS. TOTAL FOR UNIT 14. DOES NOT INCLUDE 530 LBS GEE.

QTY. REQ.	NOMEN OR DESC	CODE IDENT	IDENT NO.	FIND NO.
1		GFE	KW 7	3
3	TELETYPEWRITER	GFE	TT176	2
1	CABINET ELEC EQUIP.	162A1	141 HAX	1

UNIT 14C		
QTY / UNIT	MODEL USED ON	ASS'Y NO.
APPLICATION		
CODE		

NOTICE TO PERSONS RECEIVING THIS DRAWING
 THE TECHNICAL MATERIEL CORPORATION claims proprietary right in the material disclosed hereon. This drawing is issued in confidence for engineering information only and may not be reproduced or used to manufacture anything shown hereon without permission from THE TECHNICAL MATERIEL CORPORATION to the user. This drawing is loaned for mutual assistance and is subject to recall at any time.

UNLESS OTHERWISE SPECIFIED DIMENSIONS ARE IN INCHES AND INCLUDE CHEMICALLY APPLIED OR PLATED FINISHES

TOLERANCES ON

DECIMALS	FRACTIONS
.X ± .05	± 1/64
.XX ± .01	ANGLES
.XXX ± .005	± 0° -30'

QTY. REQ.	ITEM	PART NO.	DESCRIPTION	SYMBOL
LIST OF MATERIAL				
FINAL APPROVAL: <i>[Signature]</i> DATE: 3-4-69 MECH. DES.: <i>[Signature]</i> DATE: 2/14/68 ELECT. DES.: <i>[Signature]</i> DATE: 2/27/68 CHECKED: <i>[Signature]</i> DATE: 2-27-68 DRAWN: <i>[Signature]</i> DATE: 2-19-68				
THE TECHNICAL MATERIEL CORP. MAMARONECK, NEW YORK SOURCE CONTROL DWG				
SIZE: C CODE IDENT. NO.: 82679 DWG NO.: ID8023 ISSUE: <i>[Symbol]</i>				
SCALE 1/8" = 1" SHEET 3 OF 3				

4

3

2

1

ID8023