

CL 294 D

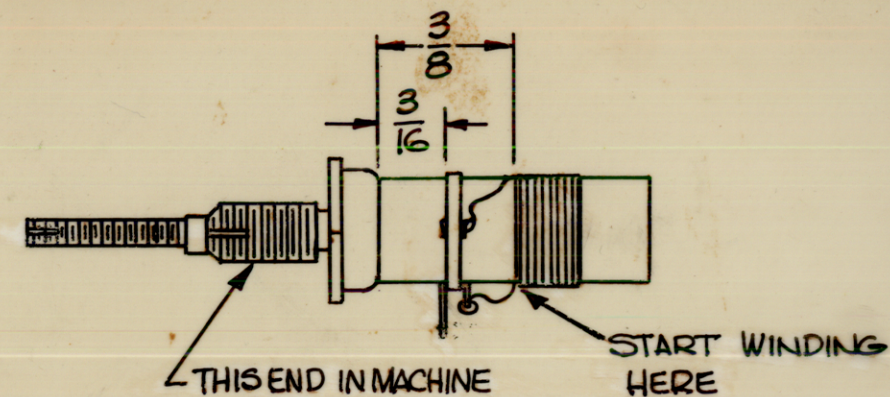
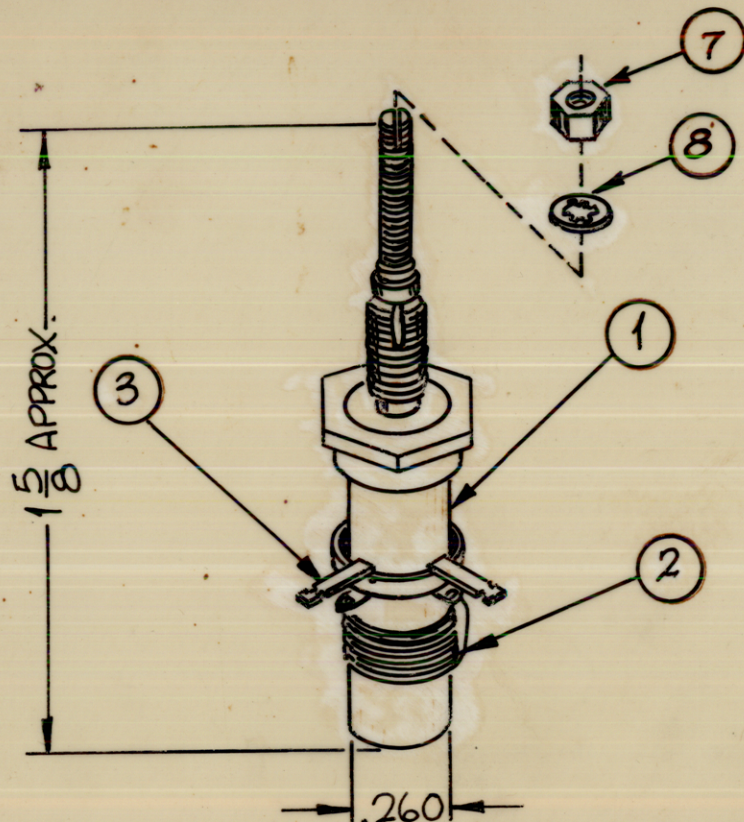
THE CONTENTS OF THIS DRAWING ARE THE EXCLUSIVE PROPERTY OF THE TECHNICAL MATERIEL CORP. ITS UNAUTHORIZED USE OR REPRODUCTION IN WHOLE OR IN PART IS STRICTLY FORBIDDEN.

COIL DATA

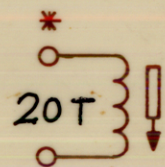
SPECIFICATIONS	PRIMARY
COIL	CLOSE WOUND
IND (MIN.) $\pm 1 \mu H$	$3 \mu H$ W/CORE FULLY RECESSED
IND (MAX.) $\pm 1 \mu H$	$6 \mu H$ W/CORE FULLY ENGAGED
Q AT 7.9 MHz	45 or BETTER W/CORE FULLY ENGAGED
COIL RES.	$1 \Omega$
WINDING DATA	
URNS	20
WIRE	MAGNET WIRE, SINGLE

WINDING INSTRUCTIONS

- 1 - CLOSE WIND 20 TURNS OF ITEM (2) STARTING  $3/8"$  FROM BUSHING AS SHOWN.
- 2 - STAKE COIL IN PLACE WITH ITEM (4).
- 3 - CLEAN & TIN LEADS & MOUNT ITEM (3).
- 4 - MEASURE IND. (MAX & MIN) Q, & COIL RES. COIL MUST MAKE BOTH MAX & MIN IND. BUT MAY EXCEED EITHER LIMIT BY  $1 \mu H$ .
- 5 - SATURATE COIL WITH ITEM (5).



\* INDICATES START OF WINDING.



SCHEMATIC DIAGRAM

REQ.	ITEM	PART NO.	DESCRIPTION	SYMBOL
1	8	LWIOMRN	WASH., LK, INT	
1	7	NTH1032BN10	NUT, PLN, HEX	
X	6	BS 100	SOLDER, TIN ALLOY	
X	5	GL 102	ADHESIVE - Q - MAX	
X	4	GL 103	ADHESIVE - N - CEL	
1	3	TE 195-2A	TERM., LUG - COLLAR	
X	2	WI 122-37	WIRE, ELEC, MAG, T	
1	1	CF 134-5-E	FORM, COIL, W/CORE	

REQ.	ITEM	PART NO.	DESCRIPTION	SYMBOL
------	------	----------	-------------	--------

THE TECHNICAL MATERIEL CORP.  
MAMARONECK, NEW YORK

COIL, RF

SYM	DESCRIPTION	DATE	CH. NO.	DRAFTS	CHECKER	ENG. APP.
D	REDRAWN (WAS "1" SIZE)	5-26-62	1841	REC	M.P.	D.P. Jde

UNLESS OTHERWISE SPECIFIED:  
DIMENSIONS ARE IN INCHES  
TOLERANCES ON FRACTIONS  $\pm 1/64$  DECIMALS  $\pm .005$  ANGLES  $\pm 1/2^\circ$   
SCALE: DO NOT SCALE  
MAXIMUM ALLOWABLE TOLERANCES HAVE BEEN DETERMINED AND ANY DEVIATIONS WILL BE CAUSE FOR REJECTION.  
REMOVE ALL BURRS AND SHARP EDGES

REQ. PER UNIT	MODEL	SECTION	ASSY. NO.	DATE
1	AFC-3		A0110	7-26-62

STOCK SIZE	MATERIAL	TYPE & TEMPER	HEAT TREAT. SPEC.	DRAWN	CHECKED	FINAL APPROVAL
						CL 294 D