

CL-10A

**STANDARD DRAWING**

IF IT IS FOUND DESIRABLE TO CHANGE ANY TOLERANCE OR OTHER DETAIL SPECIFIED ON THIS DRAWING NOTIFY THE PURCHASER PROMPTLY.

MAXIMUM ALLOWABLE TOLERANCES HAVE BEEN DETERMINED AND DEVIATIONS WILL BE CAUSE FOR REJECTION. REMOVE ALL BURRS AND SHARP EDGES

USED ON

PROJECT NO.

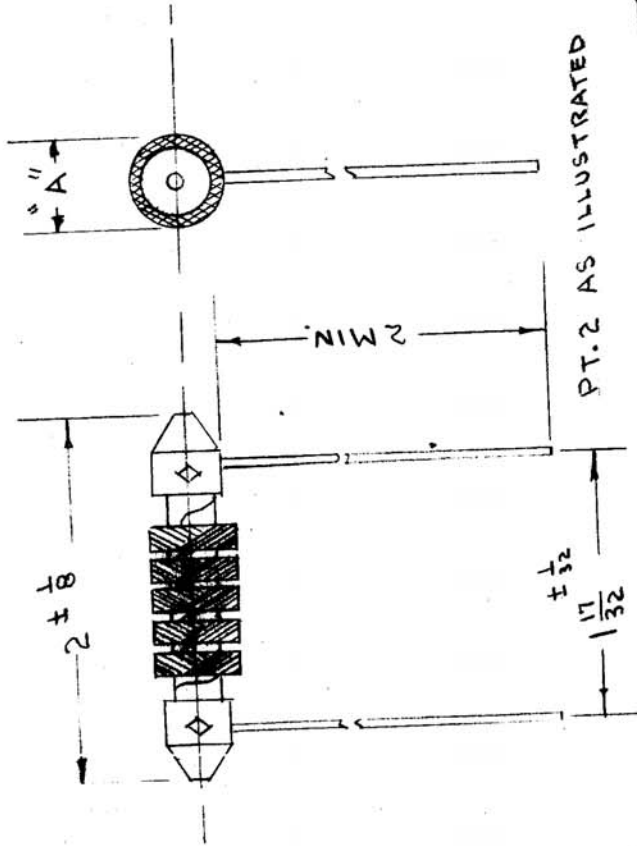
MODEL

ASSY. NO.

TMC NO.	NATIONAL PART NO.	TOTAL INDUCT. MH.	CURRENT		APPROX. RESIST. OHMS	DIMENSION "A"	WIRE AWG	MFG. DWG. NO.
			RATED MA.	MAX. MA.				
CL-10A-1	R-100-2.5	4	100	125	44 ± 15%	1/2 ± 1/16	36ESN SA44-B	
CL-10A-2	R-100-5	5	50	75	90 ± 15%	15/32 ± 1/32	38ESN SA2608	
CL-10A-3	R-100-10	5	50	75	130 ± 15%	9/16 ± 1/32	38ESN SA2606	

NOTE:  
 1. PIGTAILS 21AWG TINNED COPPER WIRE.  
 2. FORM - CERAMIC  
 3. FINISH - FUNGUS RESISTANT VARNISH  
 4. MOLDED LEAD ENDS.

DIMENSIONS FOR REF. ONLY.



REF.: NATIONAL CO. INC. TYPE R-100

REQ. ITEM	PART NO.	DESCRIPTION	SYMBOL
#	#	THE TECHNICAL MATERIEL CORP. MAMARONECK, NEW YORK	
MATERIAL	STOCK SIZE	CHOKE, R.F.	
WEIGHT PER PC.			
TYPE & TEMPER			
HEAT TREAT. SPEC.			
FINISH & SPEC. NO.			

DATE	CN. NO.	DRAFTS CHECKER	ENG. APP.
8-14-42	7022	G.S. HS	16
ISSUE	ITEM	CHANGED FROM	
A	3	CL-10A-3 OHMS WAS 100 ± 15%	
	2	CL-10A-2 OHMS WAS 100 ± 15%	
	1	NATIONAL PART NO. CLARIFIED	
SCALE	FULL		
TOLERANCES			
DRILL, PUNCH, COMMERCIAL STOCK SIZES AND MANUFACTURERS TOLERANCES ARE NOT INCLUDED.			
ALL OTHERS	DEC. DIM. ± FRAC. DIM. ± ANGULAR DIM. ±		

MECH. DES. APP.	G.T.O
ELEC. DES. APP.	
DRAWN	CL-10A-3
CHECKED	
DATE	9-20-52
FINAL APPROVAL	

CL-10A