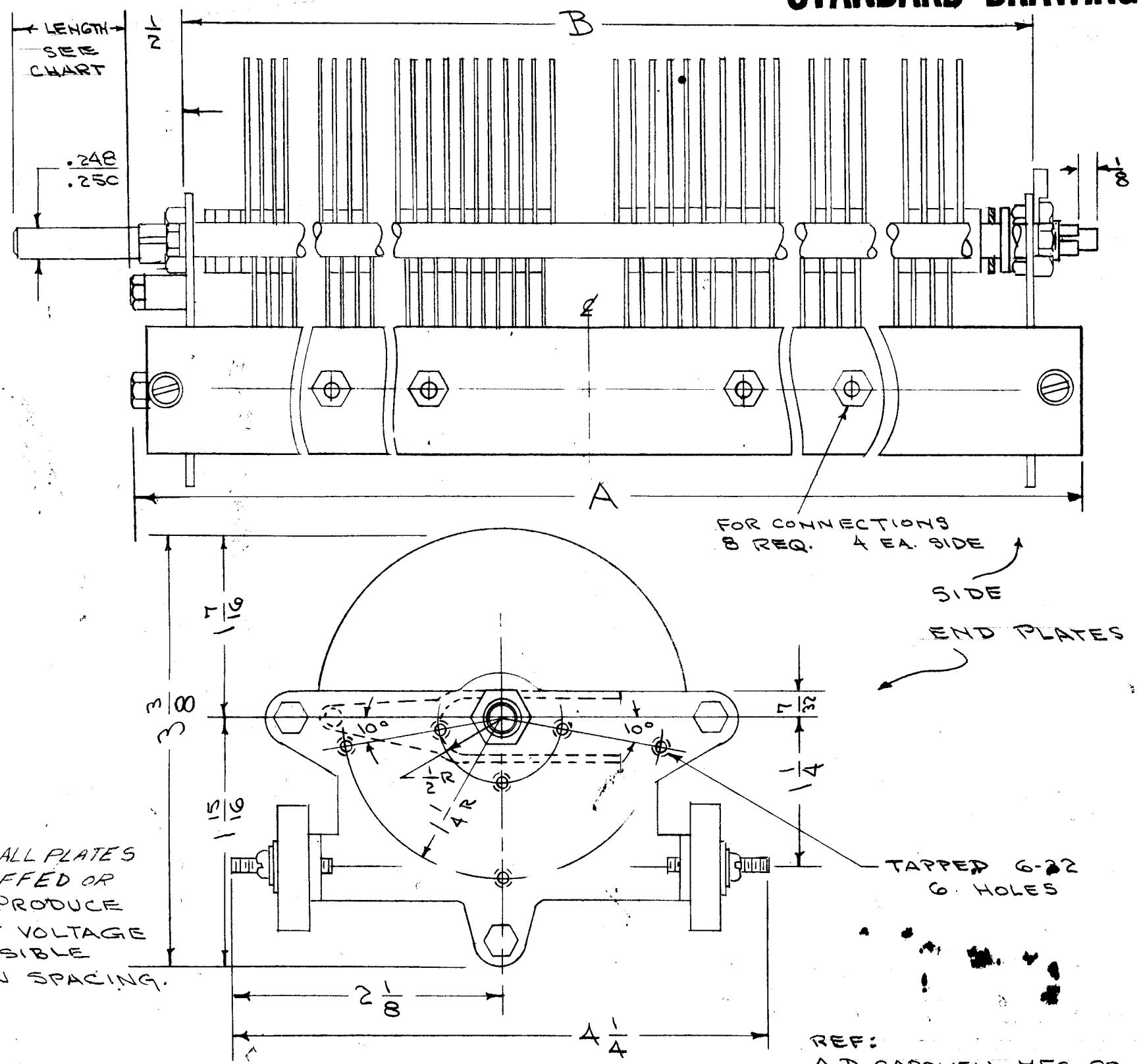


PARTS LIST NUMBER	TYPE	PER SECTION				DIM. A	DIM. B
		MAX. CAP.	MIN. CAP.	NO. PLATES	AIR GAP		
PL-8018-2	XR-500-PD	475	18	21	.030	4 1/32	3 3/16
PL-8019-2	XR-1000PD	950	30	41	.030	6 15/32	5 5/8
PL-8080-2	XO-1000PD	1000	70	71	.050	13 5/32	12 5/16
PL-8082-2	XO-1250PD	1250	75	87	.050	14 29/32	14 1/16
PL-8086-2	XV-500-KD	490	38	41	.060	11 1/32	10 3/16
PL-8079-2	XV-850-PD	850	60	71	.060	14 5/32	13 5/16
PL-8068-2	XT-80-PD	80	11	9	.070	4 1/32	3 3/16
PL-8070-2	XT-210-PD	210	22	21	.070	5 27/32	5
PL-8083-2	XT-440-PD	440	40	43	.070	11 1/32	10 3/16
PL-8065-2	XP-90-KD	95	15	11	.084	4 9/16	3 23/32
PL-8066-2	XP-165-KD	165	23	19	.084	6 15/32	5 5/8
PL-8067-2	XP-325-KD	325	38	37	.084	11 1/32	10 3/16
PL-8061-2	XE-120-XD	120	19	17	.100	6 15/32	5 5/8
PL-8062-2	XE-240-XD	240	32	33	.100	11 1/32	10 3/16
PL-8059-2	XD-28-XD	28	12	5	.125	4 1/32	3 3/16
PL-8060-2	XD-160-XD	160	28	27	.125	11 1/32	10 3/16
PL-8063-2	XG-50-XD	50	14	11	.171	6 15/32	5 5/8
PL-8064-2	XG-110-XD	110	27	21	.171	11 1/32	10 3/16
PL-8056-2	XC-40-XD	40	14	11	.200	7 15/32	6 5/8
PL-8057-2	XC-75-XD	75	21	19	.200	11 1/32	10 3/16



TYPE DESIGNATION TO BE IN FOLLOWING FORM

CB-125-B-1000-T  
 TYPE AIR GAP. MAX. CAP SHAFT\* LENGTH

LETTER	AIR GAP	LETTER	AIR GAP
A	.030	F	.100
B	.050	G	.125
C	.060	J	.171
D	.070	K	.200
E	.084		

SHAFT LENGTH	
LETTER	INCHES
STANDARD S	1"
T	.375
X	.125

NOTE: ALL PLATES SHALL BE BUFFED OR JUMBLED TO PRODUCE THE HIGHEST VOLTAGE RATING POSSIBLE FOR A GIVEN SPACING.

\* STANDARD SHAFT "S" - 1" LONG

FRAME - BRASS, NICKEL PLATED  
 SHAFT - 1/4" D. STEEL, CAP. PLATED  
 PLATES - ALUMINUM  
 INSULATION - MYCALEX

REQ. ITEM	PART NO.	DESCRIPTION	SYMBOL
THE TECHNICAL MATERIEL CORP. MAMARONECK, NEW YORK			
CAPACITOR, VARIABLE AIR			
MATERIAL			
TYPE & TEMPER	HEAT TREAT. SPEC.	DRAWN	CHECKED
		0.I.P.	10/21/55
FINISH & SPEC. NO.		ELEC. DES. APP.	MECH. DES. APP.

ISSUE	ITEM	CHANGED FROM	DATE	CH. NO.	DRAFTS	CHECKER	ENG. APP.
H	1	"OR JUMBLED" ADDED TO NOTE	11/23/55	15180	AVI	JOB	JOB
G	1	DELETED 1/8" HOLE ON R OF SIDE FRAME	3/28/53	8667	R	JOB	JOB

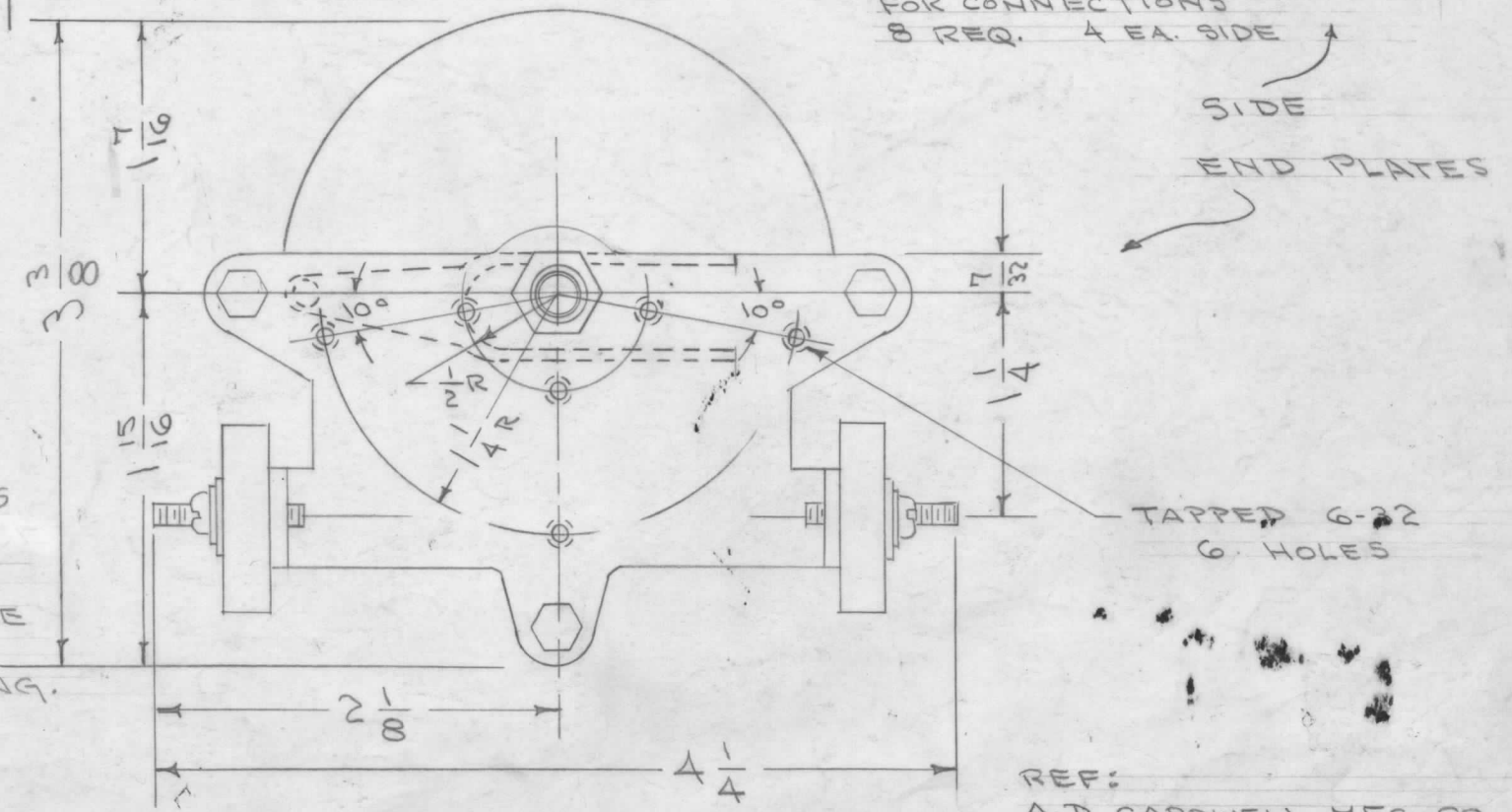
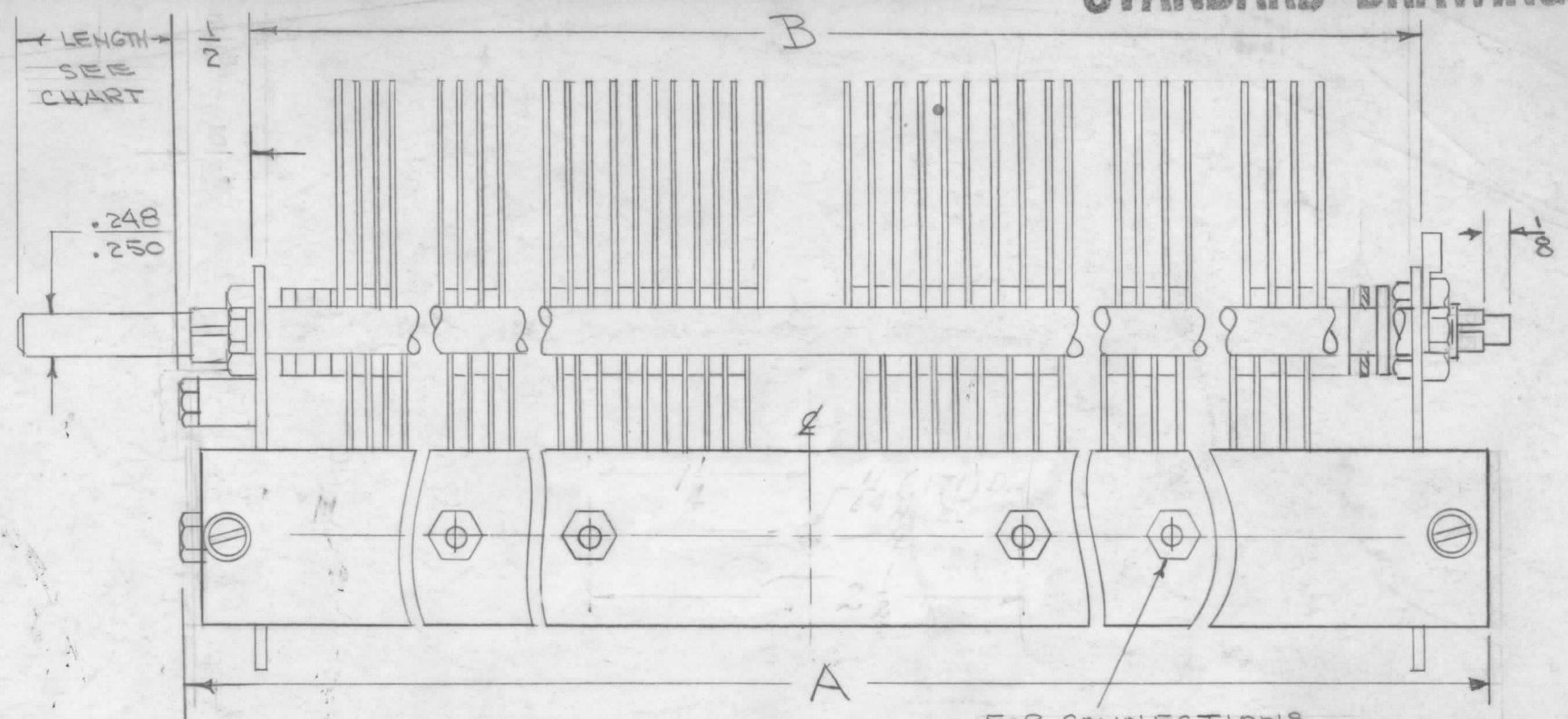
TOLERANCES: DEC. DIM. ±, FRAC. DIM. ±, ANGULAR DIM. ±

SCALE: MAXIMUM ALLOWABLE TOLERANCES HAVE BEEN DETERMINED AND ANY DEVIATIONS WILL BE CAUSE FOR REJECTION. REMOVE ALL BURRS AND SHARP EDGES

REQ. PER UNIT	MODEL	PROJECT NO.	ASSY. NO.	DATE

USED ON

PARTS LIST NUMBER	TYPE	PER SECTION				DIM. A	DIM. B
		MAX. CAP.	MIN. CAP.	NO. PLATES	AIR GAP		
PL-8018-2	XR-500-PD	475	18	21	.030	4 1/32	3 3/16
PL-8019-2	XR-1000PD	950	30	41	.030	6 15/32	5 5/8
PL-8080-2	XO-1000PD	1000	70	71	.050	13 5/32	12 5/16
PL-8082-2	XO-1250PD	1250	75	87	.050	14 29/32	14 1/16
PL-8086-2	XV-500-KD	490	38	41	.060	11 1/32	10 3/16
PL-8079-2	XV-850-PD	850	60	71	.060	14 5/32	13 5/16
PL-8068-2	XT-80-PD	80	11	9	.070	4 1/32	3 3/16
PL-8070-2	XT-210-PD	210	22	21	.070	5 27/32	5
PL-8083-2	XT-440-PD	440	40	43	.070	11 1/32	10 3/16
PL-8065-2	XP-90-KD	95	15	11	.084	4 3/16	3 23/32
PL-8066-2	XP-165-KD	165	23	19	.084	6 15/32	5 5/8
PL-8067-2	XP-325-KD	325	38	37	.084	11 1/32	10 3/16
PL-8061-2	XE-120-XD	120	19	17	.100	6 15/32	5 5/8
PL-8062-2	XE-240-XD	240	32	33	.100	11 1/32	10 3/16
PL-8059-2	XD-28-XD	28	12	5	.125	4 1/32	3 3/16
PL-8060-2	XD-160-XD	160	28	27	.125	11 1/32	10 3/16
PL-8063-2	XG-50-XD	50	14	11	.171	6 15/32	5 5/8
PL-8064-2	XG-110-XD	110	27	21	.171	11 1/32	10 3/16
PL-8056-2	XC-40-XD	40	14	11	.200	7 15/32	6 5/8
PL-8057-2	XC-75-XD	75	21	19	.200	11 1/32	10 3/16



TYPE DESIGNATION TO BE IN FOLLOWING FORM

CB-125-B-1000-T  
 TYPE AIR GAP. MAX. CAP SHAFT\* LENGTH

LETTER	AIR GAP	LETTER	AIR GAP
A	.030	F	.100
B	.050	G	.125
C	.060	J	.171
D	.070	K	.200
E	.084		

SHAFT LENGTH	
LETTER	INCHES
STANDARD S	1"
T	.375
X	.125

NOTE: ALL PLATES SHALL BE BUFFED OR TUMBLED TO PRODUCE THE HIGHEST VOLTAGE RATING POSSIBLE FOR A GIVEN SPACING.

\* STANDARD SHAFT "S" - 1" LONG

FRAME - BRASS, NICKEL PLATED  
 SHAFT - 1/4" D. STEEL, CAP. PLATED  
 PLATES - ALUMINUM  
 INSULATION - MYCALEX

REQ. ITEM	PART NO.	DESCRIPTION	SYMBOL
<b>THE TECHNICAL MATERIEL CORP.</b> MAMARONECK, NEW YORK			
CAPACITOR, VARIABLE AIR			
MATERIAL			
TYPE & TEMPER		HEAT TREAT. SPEC.	DRAWN
FINISH & SPEC. NO.		ELEC. DES. APP.	MECH. DES. APP.

ISSUE	ITEM	CHANGED FROM	DATE	CH. NO.	DRAFTS	CHECKER	ENG. APP.
H	1	"OR TUMBLED" ADDED TO NOTE	11/23/65	15180			
G	1	DELETED 1/8" HOLE ON @ OF SIDE FRAME	3/28/63	8667			

TOLERANCES: DEC. DIM. ±, FRAC. DIM. ±, ANGULAR DIM. ±  
 SCALE: MAXIMUM ALLOWABLE TOLERANCES HAVE BEEN DETERMINED AND ANY DEVIATIONS WILL BE CAUSE FOR REJECTION. REMOVE ALL BURRS AND SHARP EDGES

REQ. PER UNIT	MODEL	PROJECT NO.	ASS'Y. NO.	DATE	USED ON