

MECHANICAL SPECIFICATIONS:

NUMBER OF SECTIONS-
 NUMBER OF POSITIONS-
 ANGLE OF THROW-30

CONTACTS:

SHORTING TYPE, SECTIONS
 NON SHORTING TYPE, SECTIONS
 SILVER PLATED BRASS, SECTIONS
 SILVER ALLOY, SECTIONS

WAFERS:

BAKELITE, SECTIONS
 CERAMIC, SECTIONS
 MYCALEX, SECTIONS
 IMPREGNATION (IF REQ.)

FINISH REQUIREMENTS:

ARMY NAVY COMMERCIAL
 SALT TEST (IF REQ.)

HARDWARE, TO BE SUPPLIED BY MANUFACTURER:

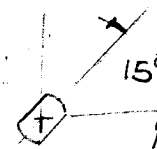
QUAN. -32 NUTS ACROSS FLATS
 MATERIAL PLATING
 QUAN. INTERNAL TOOTH LOCKWASHER
 MATERIAL PLATING

ELECTRICAL SPECIFICATIONS:

MAXIMUM RATED VOLTAGE 110VAC
 MAXIMUM RATED CURRENT 1.0 AMP BREAK
5.0 AMP CARRY

NOTE:

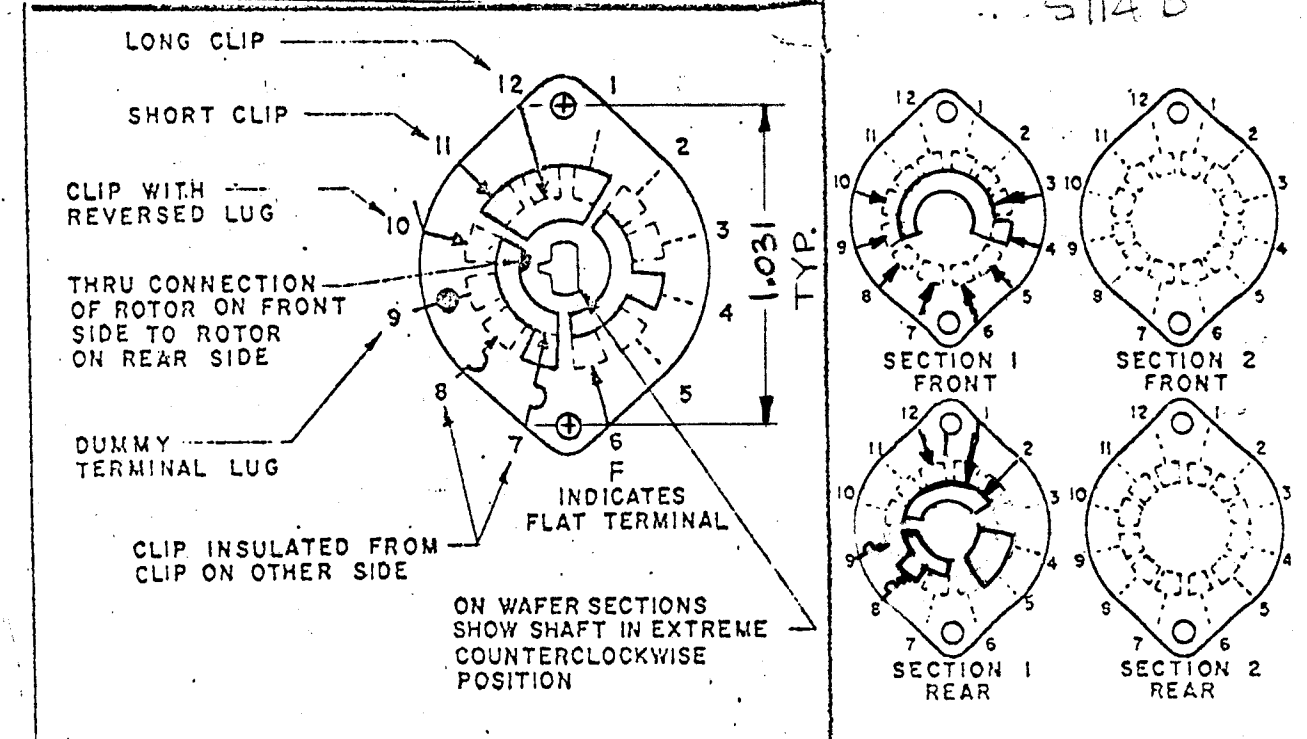
FOR S401-13 ("F" TYPE) SWITCHES, THE SHAFT POSITION MUST BE SPECIFIED ON DETAIL "XX" 15° BELOW.



DETAIL "XX"

REVISIONS							
E.M.N. NO.	DRAFT	CHKD	ZONE	LTR	DESCRIPTION	DATE	APPROVED
4	GDL	WJB		Φ	OFFICIAL RELEASE FOR PRODUCTION	6-5-78	*

FRONT AND REAR SECTIONS VIEWED FROM FRONT OR KNOB END OF SWITCH IN EXTREME COUNTERCLOCKWISE POSITION.



1	MMXZ-2B	
QTY / UNIT	MODEL USED ON	ASS'Y NO.
APPLICATION		
CODE		

NOTICE TO PERSONS RECEIVING THIS DRAWING
 THE TECHNICAL MATERIEL CORPORATION claims proprietary right in the material disclosed hereon. This drawing is issued in confidence for engineering information only and may not be reproduced or used to manufacture anything shown hereon without permission from THE TECHNICAL MATERIEL CORPORATION to the user. This drawing is loaned for mutual assistance and is subject to recall at any time.

UNLESS OTHERWISE SPECIFIED DIMENSIONS ARE IN INCHES AND INCLUDE CHEMICALLY APPLIED OR PLATED FINISHES.		FINAL APPROVAL GDL *	DATE 9/1/78
DECIMALS .X ± .05 .XX ± .01 .XXX ± .005	FRACTIONS 1/64 ANGLES 0° 30'	ELECT. DES. CHECKED GDL	DATE 9-22-77
MATERIAL	FINISH		

THE TECHNICAL MATERIEL CORP. MAMARONECK, NEW YORK			
WAFER SWITCH MODE			
SIZE B	CODE IDENT. NO. 82679	DWG NO. WS 15.3	ISSUE Φ
SCALE	SHEET		