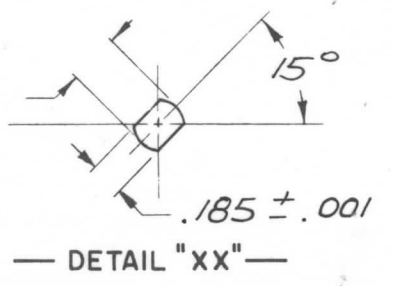


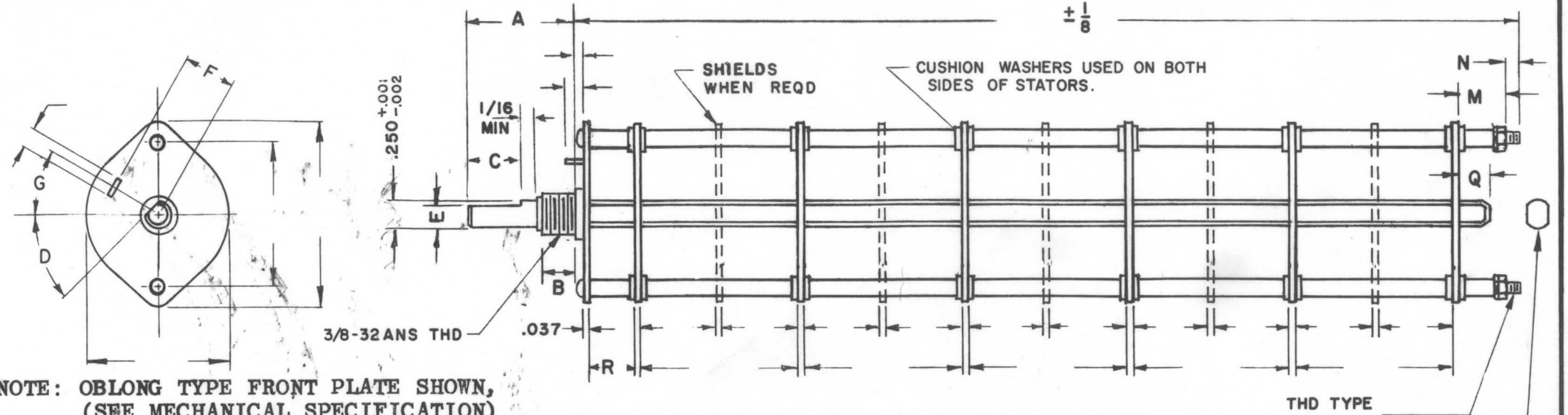
DESG.	DIMENSION	TOL.	REMARK
A		±.015	SHAFT LG. FROM MTG. SURFACE
B		±.005	BUSH. LG.
C		±.015	FLAT LG. (IF REQ.)
D		±2°	FLAT ANGLE (IF REQ.)
E		±.002	FLAT (IF REQUIRED)
F		±.010	KEY LOCATION (IF REQ.)
G			KEY LOCATION (IF REQ.)
M		±.010	
N		±.093	REAR SCR. EXT.
Q		±.031	REAR SHAFT EXT.
R	3/8		1st SEC. SPACING

TMC PART NUMBER: SW- _____ STAMP ON FRONT PLATE
FRONT PLATE SHAPE: ROUND _____ OR OBLONG _____
MECHANICAL SPECIFICATIONS:
NUMBER OF SECTIONS- _____
NUMBER OF POSITIONS- _____
ANGLE OF THROW- 30° _____
CONTACTS:
SHORTING TYPE, SECTIONS _____
NON SHORTING TYPE, SECTIONS _____ / _____
SILVER PLATED BRASS, SECTIONS _____ / _____
SILVER ALLOY, SECTIONS _____
WAFERS:
BAKELITE, SECTIONS _____ / _____
CERAMIC, SECTIONS _____
MYCALEX, SECTIONS _____
IMPREGNATION (IF REQ.) _____
FINISH REQUIREMENTS:
ARMY _____ NAVY _____ COMMERCIAL _____
SALT TEST (IF REQ.) _____
HARDWARE, TO BE SUPPLIED BY MANUFACTURER:
QUAN. _____ -32 NUTS _____ ACROSS FLATS _____
MATERIAL _____ PLATING _____
QUAN. _____ INTERNAL TOOTH LOCKWASHER _____
MATERIAL _____ PLATING _____
ELECTRICAL SPECIFICATIONS:
MAXIMUM RATED VOLTAGE _____
MAXIMUM RATED CURRENT _____

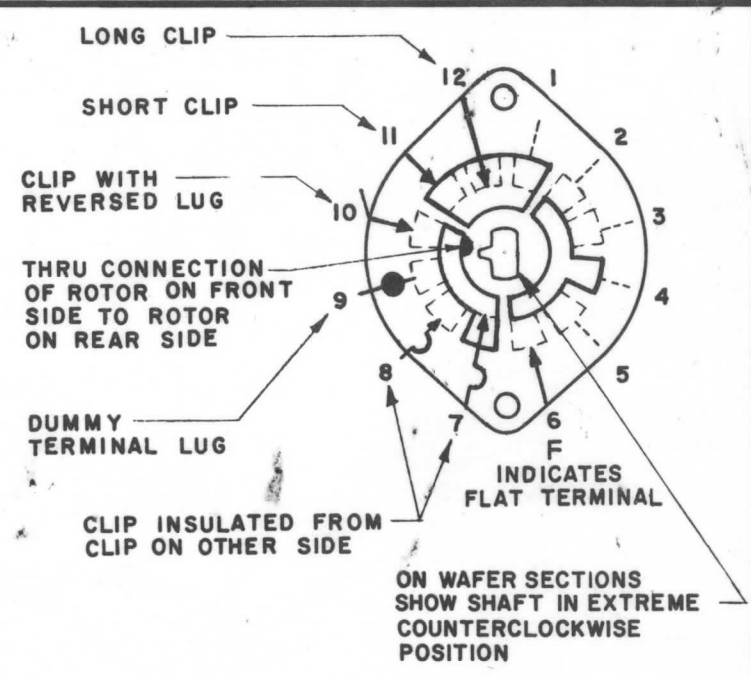
NOTE:
FOR S401-13 ("F" TYPE) SWITCHES, THE SHAFT POSITION MUST BE SPECIFIED ON DETAIL "XX" BELOW.



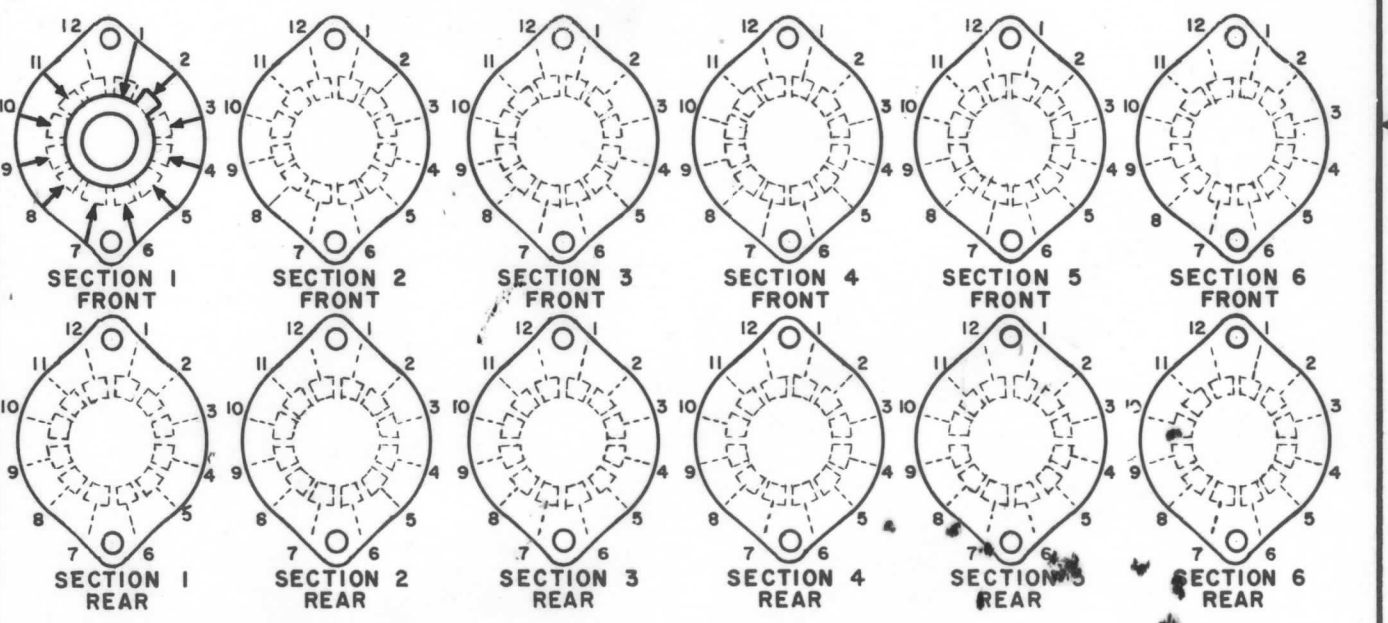
NOTES



NOTE: OBLONG TYPE FRONT PLATE SHOWN, (SEE MECHANICAL SPECIFICATION)



FRONT AND REAR SECTIONS VIEWED FROM FRONT OR KNOB END OF SWITCH IN EXTREME COUNTERCLOCKWISE POSITION.



SYMBOLS USED IN MARKING PRINT

POSE SWITCH, ROTARY - 12 POINT TYPE

QTY / UNIT		SME-6		FINAL APPROVAL		DATE		THE TECHNICAL MATERIEL CORP. MAMARONECK, NEW YORK							
MODEL USED ON		ASS'Y NO.		MECH. DES.		DATE		WAFER, SWITCH							
APPLICATION		CODE		ELECT. DES.		DATE									
MATERIAL		FINISH		CHECKED		DATE		SIZE		CODE IDENT. NO.		DWG NO.		ISSUE	
NOTICE TO PERSONS RECEIVING THIS DRAWING		THE TECHNICAL MATERIEL CORPORATION claims proprietary right in the material disclosed hereon. This drawing is issued in confidence for engineering information only and may not be reproduced or used to manufacture anything shown hereon without permission from THE TECHNICAL MATERIEL CORPORATION to the user. This drawing is loaned for mutual assistance and is subject to recall at any time.		UNLESS OTHERWISE SPECIFIED DIMENSIONS ARE IN INCHES AND INCLUDE CHEMICALLY APPLIED OR PLATED FINISHES		DRAWN		DATE		B		82679		WS 140	
SCALE		SHEET		OF											

REVISIONS							
ZONE	LTR	DESCRIPTION	DATE	E.M.N.NO	DRAFT	CHKD	APPD
	X	EXP. RELEASE	3/11/69				
	Ø	ORIG. RELEASE FOR PROD	3/18/69		RG		