

WS-112

NUMBER OF SECTIONS 2
 NUMBER OF POSITIONS 10
 ANGLE OF THROW 30° (30° OR 60°)

PART NUMBER _____
 STAMP ON FRONT PLATE YES ___ NO ___

CONTACTS & ROTORS: (IF NOT SPECIFIED, SHORTING TYPE WILL BE SUPPLIED)
 SHORTING NON SHORTING ___

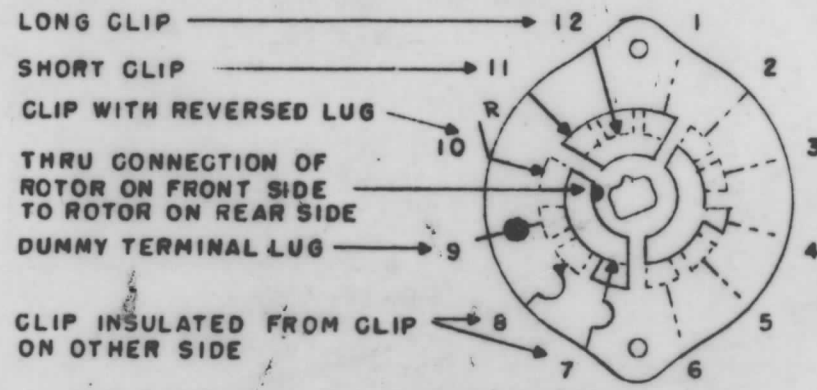
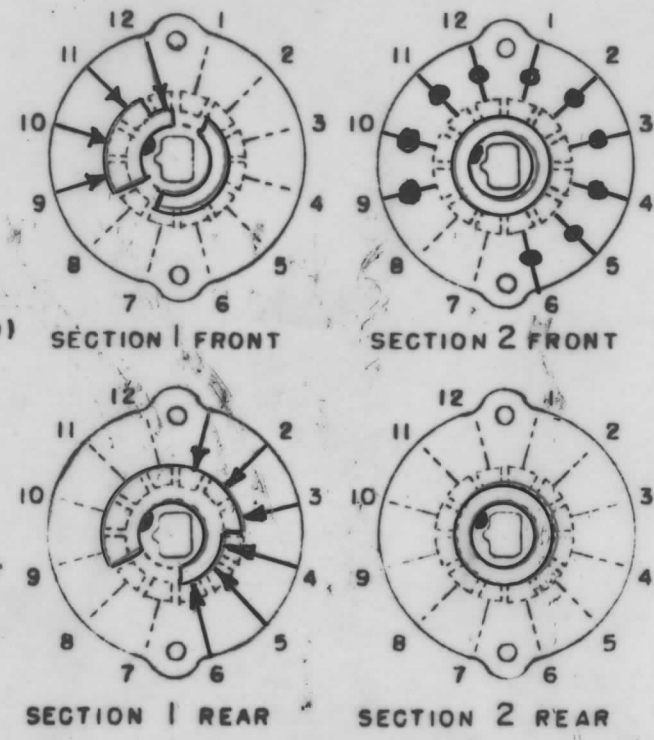
MATERIAL: (IF NOT SPECIFIED, SILVER PLATED BRASS WILL BE SUPPLIED)
 SILVER PLATED BRASS SILVER ALLOY ___

INSULATION: BAKELITE ___ CERAMIC
 SPECIFY IMPREGNATION IF REQUIRED _____

FINISH REQUIREMENTS: COMMERCIAL ___ ARMY ___ NAVY ___
 SALT TEST (IF ANY GIVE DETAILS) _____

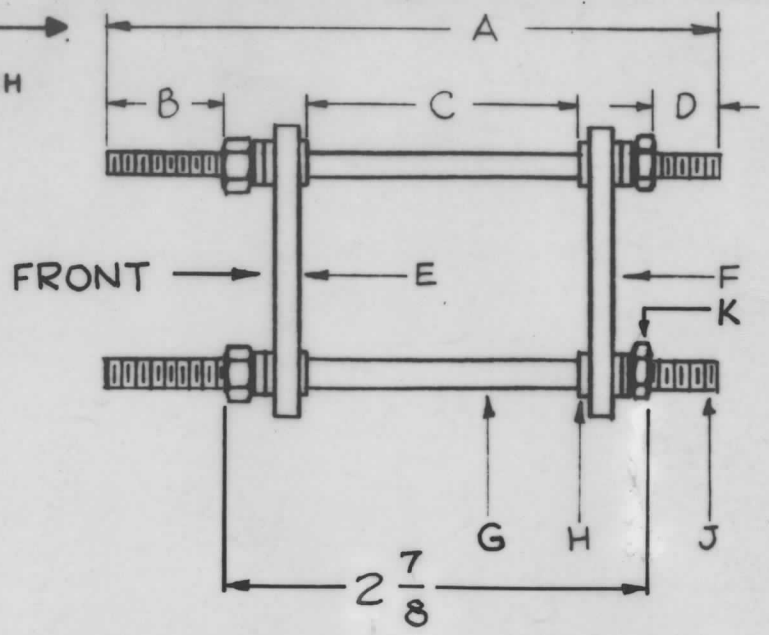
HARDWARE: SUPPLY
 ___ 3/8-32 NUTS ___ ACROS FLATS MAT. ___ PLATING ___
 ___ 3/8 INT TOOTH LOCKWASHERS MAT. ___ PLATING ___

FRONT & REAR OF SECTIONS VIEWED FROM FRONT OR KNOB END OF SWITCH IN EXTREME COUNTER-CLOCKWISE POSITION



OUTLINE ROTOR BLADES AS SHOWN ABOVE WITH SWITCH IN EXTREME COUNTER-CLOCKWISE POSITION

FUNCTION:
 1 - 1.9 KC HARMONIC SELECTOR



- A ~ 3 7/16
- B ~ 9/32
- C ~ 2
- D ~ 9/32
- E ~ WAFER, SECTION 1
- F ~ WAFER, SECTION 2
- G ~ 5-40 SPACER, 2 REQ.
- H ~ 5-40 FIBRE WASHER, 1/16 THK., 12 REQ.
- J ~ 5-40 THREADED ROD, 2 REQ.
- K ~ 5-40 NUT, 3/32 THK., 4 REQ.

NOTICE TO PERSONS RECEIVING THIS DRAWING
 THE TECHNICAL MATERIEL CORPORATION claims proprietary right in the material disclosed hereon. This drawing is issued in confidence for engineering information only and may not be reproduced or used to manufacture anything shown herein without permission from THE TECHNICAL MATERIEL CORPORATION to the user. This drawing is loaned for mutual assistance and is subject to recall at any time.

Property of:
 THE TECHNICAL MATERIEL CORPORATION
 MAMARONECK, NEW YORK

SYMBOLS USED IN MARKING PRINT →

OAK SWITCH TYPE-HC

ISSUE	ITEM	CHANGED FROM	DATE	CH. NO.	DRAFTS	CHECKER	ENG. APP.
TOLERANCES		SCALE:					
DEC. DIM. ±		MAXIMUM ALLOWABLE TOLERANCES HAVE BEEN DETERMINED AND ANY DEVIATIONS WILL BE CAUSE FOR REJECTION. REMOVE ALL BURRS AND SHARP EDGES					
FRAC. DIM. ±							
ANGULAR DIM. ±							

2	CLL	S702-A, S702-C	4-20-60
REQ. PER UNIT	MODEL	PROJECT NO.	ASS'Y. NO.
USED ON			

REQ. ITEM	PART NO.	DESCRIPTION	SYMBOL
THE TECHNICAL MATERIEL CORP. MAMARONECK, NEW YORK			
STOCK SIZE		WAFER, SWITCH ROTARY	
MATERIAL		WAFERS	
TYPE & TEMPER	HEAT TREAT. SPEC.	DRAWN	CHECKED
FINISH & SPEC. NO.		ELEC. DES. APP.	MECH. DES. APP.
		WS-112	