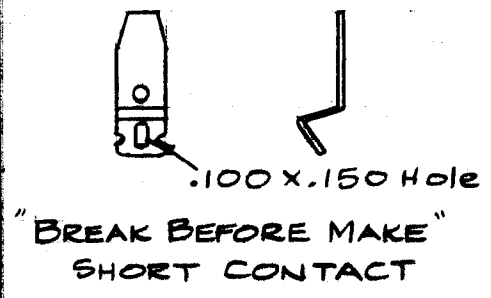
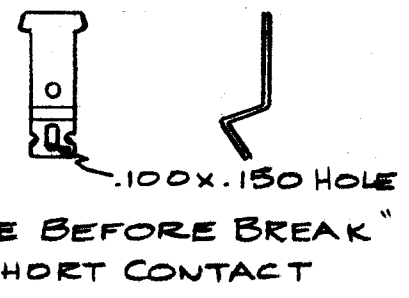


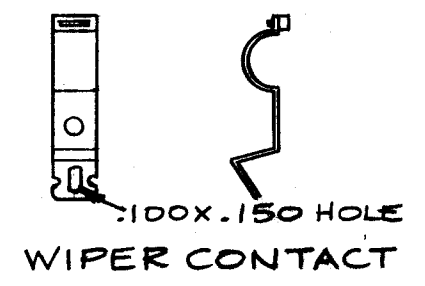
TMC PART NO.	ASSEMBLE CONTACT TYPE SHOWN IN POSITION SHOWN											
	Pos. 0	Pos. 1	Pos. 2	Pos. 3	Pos. 4	Pos. 5	Pos. 6	Pos. 7	Pos. 8	Pos. 9	Pos. 10	Pos. 11
WS 106-1	TYPE W	M	M	M	M	M	M	M	M	M	M	M
WS 106-2	B	B	B	B	W	B	B	B	B	B	B	B
WS 106-3	W	B	B	B	B	B	B	B	B	B	B	W
WS 106-4	W	W	B	B	B	B	B	B	B	B	B	B
WS 106-5					W	B	B	B	B			
WS 106-6						B	B	B	B		W	
WS 106-7	W	B	B	B	B	B	B	B	B	B	B	B
WS 106-8	M	M	W	W	M	M	M	M	M	M	M	M
WS 106-9	B	B	B	B	W	B	B	B	B	B	B	B



TYPE B



TYPE M

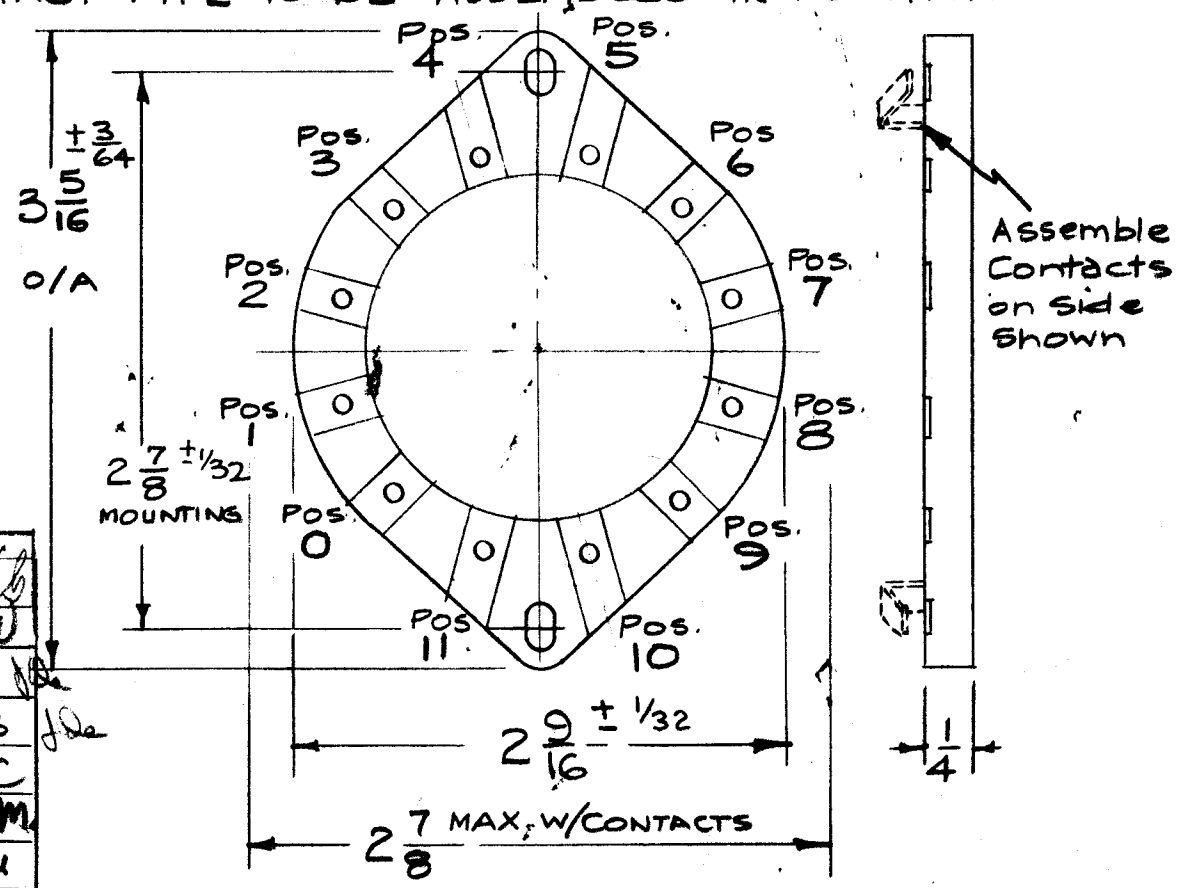


TYPE W

SEE CHART FOR CONTACT TYPE TO BE ASSEMBLED IN POSITIONS

NOTE-Wafer Mfg. to Assemble Contact in Appropriate Positions as per chart.

Min. Flashover - 7KV. PK. Current, Max. - 20 Amp.



STANDARD DRAWING

H	ADDED WS106-8	1/2/75	21201	Q	Q	Q
G	ADDED WS106-7	5/18/71	20338	W	W	P.E.B.
F	ADDED WS106-5+6	10/14/70	20033	W	P.E.B.	TRU
E	ADDED WS106-3, 4	1-16-69	19193	GE	FB	FB
D	WS106-2 ADDED	11-27-67	18636	HY	FB	FB
C	TOL. ADDED 2 9/16 WAS 2 3/4	2/14/66	15750	JND	FB	FB
B	added Position 2 and M to Pos. 11 on WS-106-1	6/16/61	5069	JND	FB	FB
A	Deleted "Pos. 12" Column in chart - Error - NOT REQ.	10/15/59		K	FB	FB

ISSUE ITEM	CHANGED FROM	DATE	CH. NO.	DRAFTS	CHECKER	ENG. APP.
TOLERANCES						
SCALE: 5-401-41 (WAFFER TYPE 86 SW.)						
DEC. DIM. ± FRAC. DIM. ± ANGULAR DIM. ±						
MAXIMUM ALLOWABLE TOLERANCES HAVE BEEN DETERMINED AND ANY DEVIATIONS WILL BE CAUSE FOR REJECTION. REMOVE ALL BURRS AND SHARP EDGES						
REQ. PER UNIT	MODEL	PROJECT NO.	ASS'Y. NO.	DATE	USED ON	

REQ. ITEM	PART NO.	DESCRIPTION	SYMBOL
THE TECHNICAL MATERIEL CORP. MAMARONECK, NEW YORK			
STOCK SIZE		WAFFER, ROTARY SWITCH	
STEATITE WAFER			
MATERIAL			
TYPE & TEMPER		HEAT TREAT. SPEC.	
DRAWN		CHECKED	
FINISH & SPEC. NO.		ELEC. DES. APP. MECH. DES. APP.	

WS 106 H