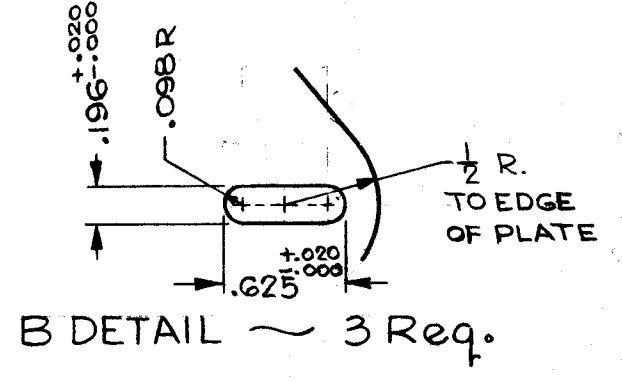
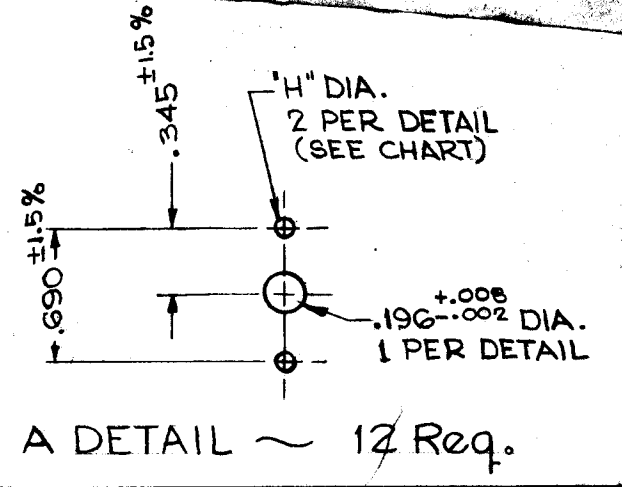
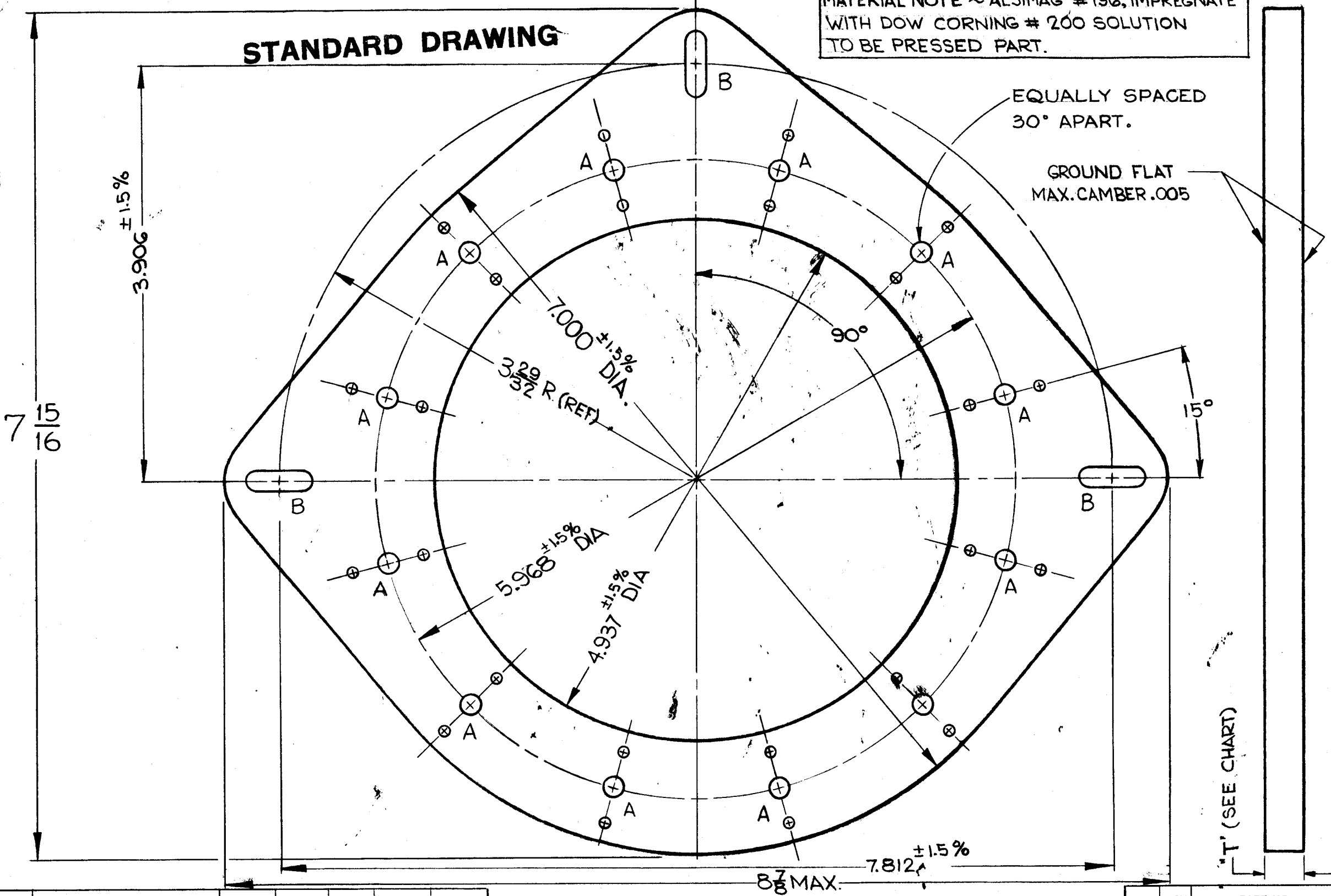


WS-105 B

STANDARD DRAWING

MATERIAL NOTE ~ ALSIMAG #196, IMPREGNATE WITH DOW CORNING # 200 SOLUTION TO BE PRESSED PART.



NOTICE TO PERSONS RECEIVING THIS DRAWING
 THE TECHNICAL MATERIEL CORPORATION claims proprietary right in the material disclosed hereon. This drawing is issued in confidence for engineering information only and may not be reproduced or used to manufacture anything shown hereon without permission from THE TECHNICAL MATERIEL CORPORATION to the user. This drawing is loaned for mutual assistance and is subject to recall at any time.
 Property of:
 THE TECHNICAL MATERIEL CORPORATION
 MAMARONECK, NEW YORK

ISSUE	ITEM	CHANGED FROM	DATE	CH. NO.	DRAFTS	CHECKER	ENG. APP.
B	1	WS-105-2, DIM. H' WAS .109 ^{+0.00} / _{-0.00}	6.16.64	11593	ASB	@	XC
A	1	REVISED TO MFR SPECS	5-9-63	8972	RE	JMY	ASB
TOLERANCES			SCALE:				
DEC. DIM. ± .005			MAXIMUM ALLOWABLE TOLERANCES HAVE BEEN DETERMINED AND ANY DEVIATIONS WILL BE CAUSE FOR REJECTION.				
FRAC. DIM. ± 1/64			REMOVE ALL BURRS AND SHARP EDGES				
ANGULAR DIM. ± 15'							

TMC PART No.	MFR'S No	DIM. "T"	DIM. "H"
WS-105-1	514510S	.375 ±.005	.093 ^{+0.010} / _{-0.000}
WS-105-2	SPECIAL	.750 ^{+0.000} / _{-0.000}	.099 ^{+0.010} / _{-0.000}

REQ. ITEM	PART NO.	DESCRIPTION	SYMBOL
SEE CHART (T)		THE TECHNICAL MATERIEL CORP. MAMARONECK, NEW YORK	
SEE NOTE		WAFER, CERAMIC	
MATERIAL		J.C. BIELE	
TYPE & TEMPER	HEAT TREAT. SPEC.	DRAWN	CHECKED
FINISH & SPEC. NO.		FINAL APPROVAL	
		WS-105 B	
		ELEC. DES. APP.	MECH. DES. APP.

REQ. PER UNIT	MODEL	PROJECT NO.	ASS'Y. NO.	DATE
USED ON				