

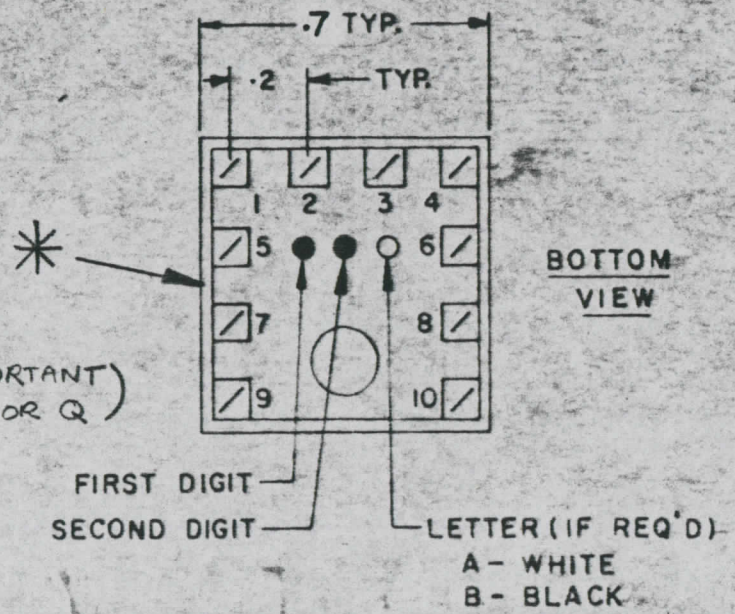
REV	ITEM	CHANGED FROM	DATE	BY	REASON	CHKD	APP
0		REL TO PROD	MAY 12/68	AP			

TT10007-448

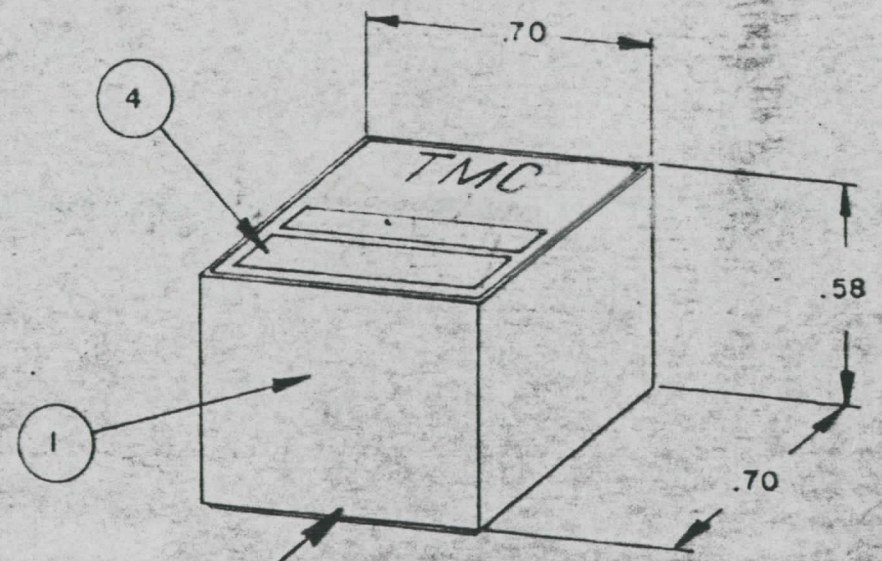
NOTE:-
 1- COLOUR CODE INDICATES LAST TWO DIGITS AND LETTER IN TMC PART NO.
 2- * -INDICATES POSITION OF NAMEPLATE.

ASSEMBLY INSTRUCTIONS:-

- WIND 3 TURNS OF ITEM 3 AS SHOWN IN SKETCH 1.
- WIND 1.5 TURNS OF ITEM 3 AS SHOWN IN SKETCH 2.
- WIND _____ TURNS OF ITEM _____ AS SHOWN IN SKETCH 3.
- DIP COIL IN ITEM 5 AND BAKE FOR 1/2 HR. AT 125°F.
- REMOVE _____ TURNS FROM THE PRIMARY IF NECESSARY TO OBTAIN THE FOLLOWING AT TEST FREQ. OF _____
 a) INDUCTANCE IN μ H. .5 \pm \rightarrow (TURNS RATIO IMPORTANT)
 b) Q MINIMUM NO SPEC (NOT INDUCTANCE OR Q)
- MAXIMUM NUMBER OF TURNS TO BE REMOVED _____
- MOUNT TRANSFORMER ON BASE & CONNECT WIRES TO CORRESPONDING PINS.
- INSTALL ITEM 7 & _____ BETWEEN PINS 9 & 2.
- INSTALL ITEM _____ & _____ BETWEEN PINS _____ & _____
- INSTALL ITEM _____ BETWEEN PINS _____ & _____
- POT TRANSFORMER USING ITEM 6 AS PER SPEC. S 10149.
- COLOUR CODE BOTTOM OF TRANSFORMER _____
- INSTALL NAMEPLATE.



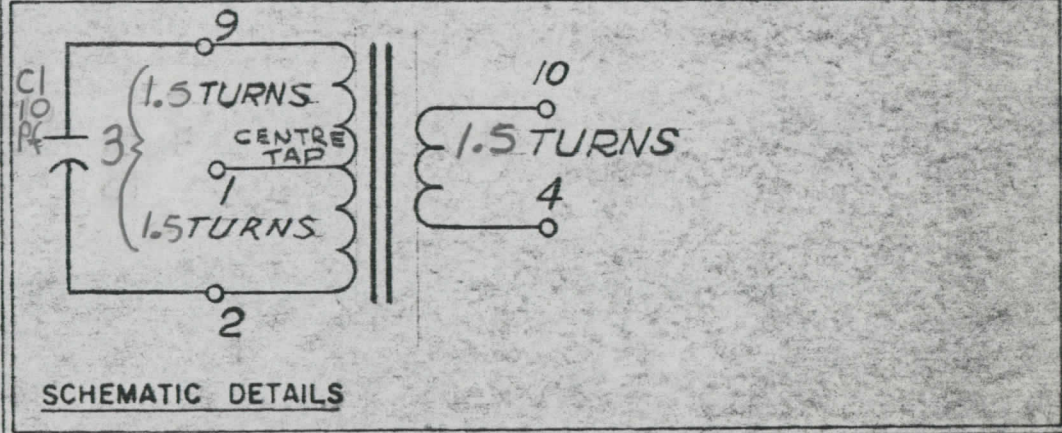
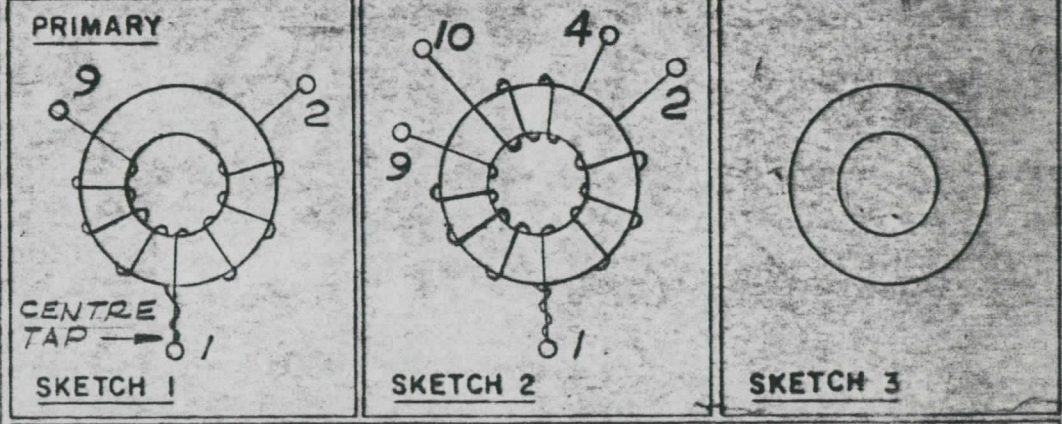
COLOUR CODE MARKING



TYPICAL FOR ALL SKETCHES *

1	1	BPI0002-1	MODU-CON	
1	2	CI-10011-1-Q2	CORE	
AR	3	WI-122-32	WIRE MAGNET	
1	4	NP 10157	NAMEPLATE	
AR	5	GL 130	Q-DOPE	
AR	6	GL 10005-3110 H	ENCAPSULANT	
1	7	CM10002-G-100J	CAPACITOR FIXED	CI
	8			
	9			
	10			
	11			
	12			

DIRECTION OF WINDING TO BE CLOSELY FOLLOWED AS SHOWN IN SKETCHES. ALL LEADS TO BE 1 INCH LONG. TIN LEADS BACK 3/4 INCH.



TMC (Canada) LIMITED
 OTTAWA ONTARIO

TRANSFORMER RF,
 TUNED

AP A.S.
 RPL [Signature]

TOLERANCES UNLESS OTHERWISE SPECIFIED	SCALE
XXX.005	
XX.005	
XX.005	

TTRT-4BE 059/68 MAY 13/68

TT10007-448