

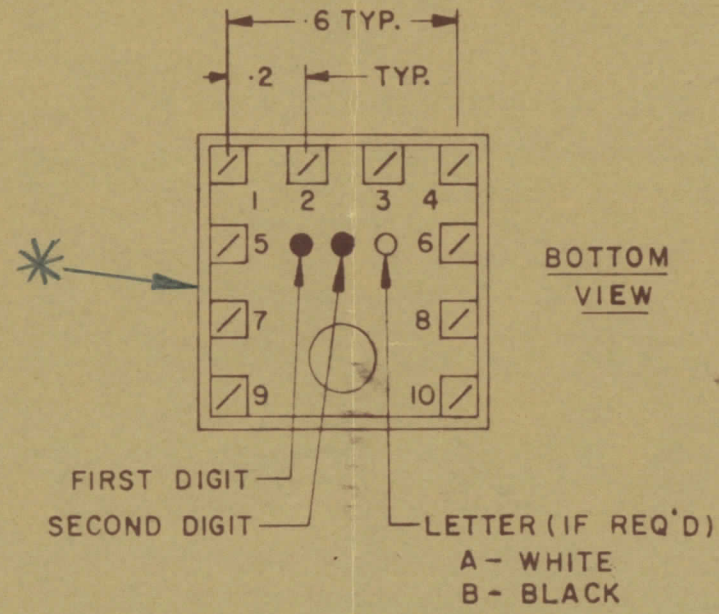
ALL DIMENSIONS UNLESS OTHERWISE SPECIFIED IN THIS DRAWING SHALL BE IN MILLIMETERS TO NEAREST .015 MAXIMUM ALLOWABLE TOLERANCES HAVE BEEN DETERMINED AND DEVIATIONS WILL BE LISTED TO RESULT IN MINIMAL BURRS AND SHARP EDGES		DIMENSIONS IN MILLIMETERS UNLESS OTHERWISE SPECIFIED				
REV.	ITEM	CHANGED FROM	DATE	BY	CHECKER	ENG. APP.
0		REL TO PROD	SEPT 3/68	AP		AS

TT10006-45B

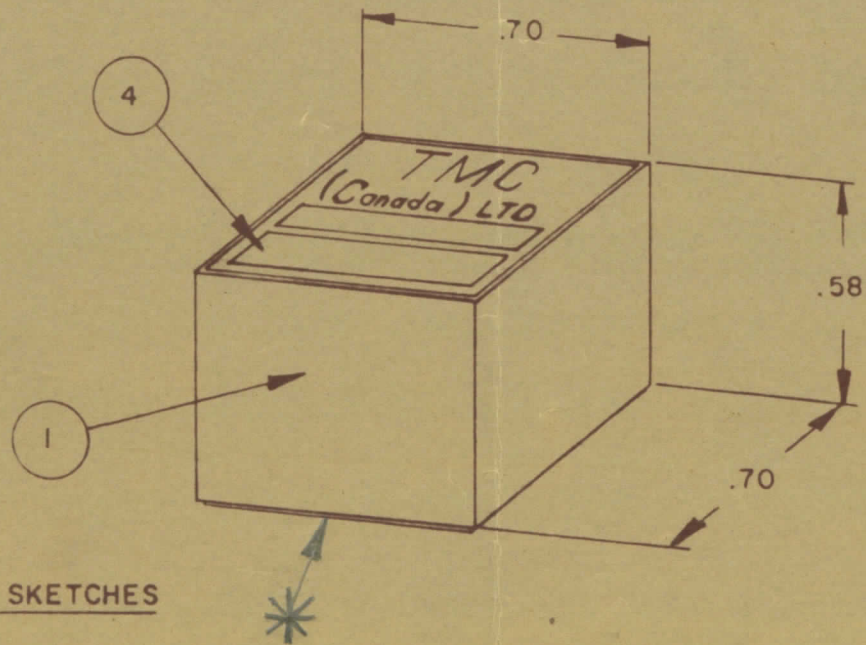
NOTE:-  
 1- COLOUR CODE INDICATES LAST TWO DIGITS AND LETTER IN TMC PART NO.  
 2- \* -INDICATES POSITION OF NAMEPLATE.

ASSEMBLY INSTRUCTIONS:-

- WIND 11 TURNS OF ITEM 3 AS SHOWN IN SKETCH 1.
- WIND \_\_\_\_\_ TURNS OF ITEM \_\_\_\_\_ AS SHOWN IN SKETCH 2.
- WIND \_\_\_\_\_ TURNS OF ITEM \_\_\_\_\_ AS SHOWN IN SKETCH 3.
- DIP COIL IN ITEM 5 AND BAKE FOR \_\_\_\_\_ HR. AT \_\_\_\_\_ OF \_\_\_\_\_.
- REMOVE AS MANY TURNS FROM THE PRIMARY AS NECESSARY TO OBTAIN THE FOLLOWING AT TEST FREQ. OF \_\_\_\_\_  
 a) INDUCTANCE IN  $\mu\text{H}$ . 0.6 ± 1 TURN.  
 b) Q MINIMUM \_\_\_\_\_
- MAXIMUM NUMBER OF TURNS TO BE REMOVED ANY.
- MOUNT TRANSFORMER ON BASE & CONNECT WIRES TO CORRESPONDING PINS.
- INSTALL ITEM 8 BETWEEN PINS 8.
- INSTALL ITEM 8 BETWEEN PINS 8.
- INSTALL ITEM \_\_\_\_\_ BETWEEN PINS 8.
- POT TRANSFORMER USING ITEM 6 AS PER SPEC. S 10149.
- COLOUR CODE BOTTOM OF TRANSFORMER \_\_\_\_\_.
- INSTALL NAMEPLATE.



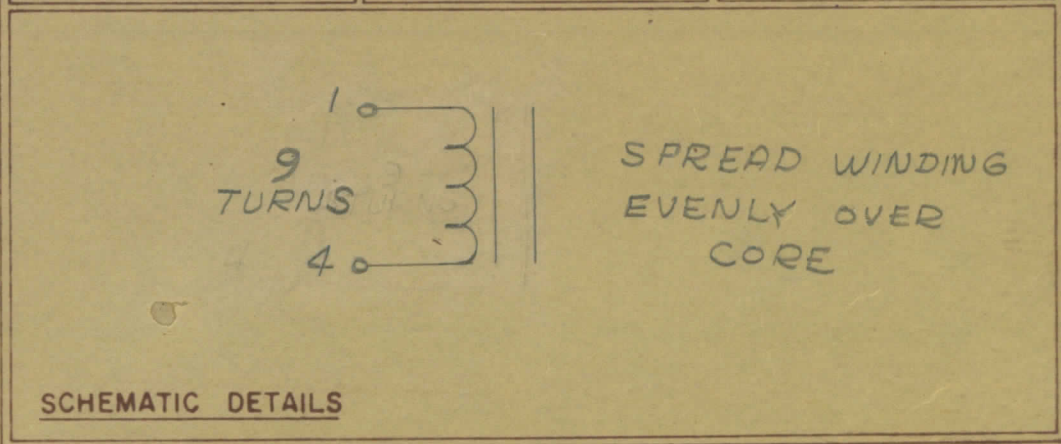
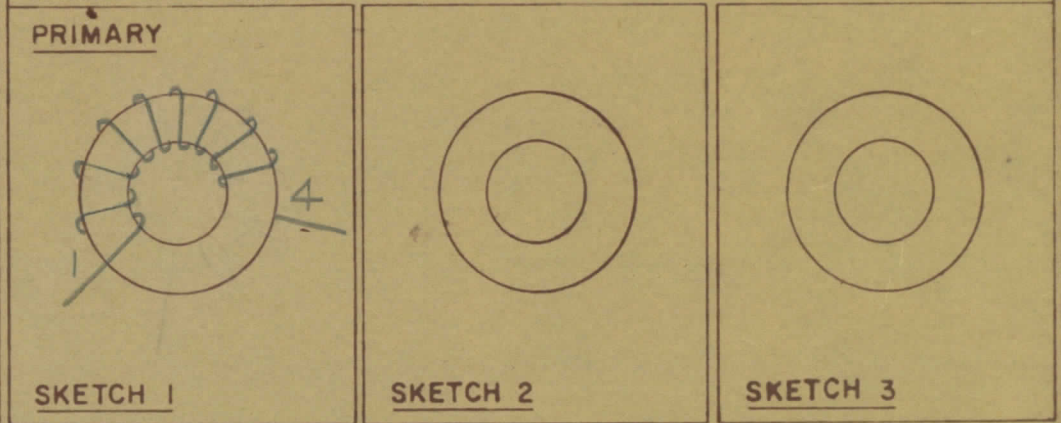
COLOUR CODE MARKING



TYPICAL FOR ALL SKETCHES

1	1	BPI0002-1	MODU - CON
1	2	CI-127-1	CORE
AR	3	WI-123-28	WIRE MAGNET
1	4	NP 10157	NAMEPLATE
AR	5	GL 130	Q-DOPE
AR	6	GL 10005-3110 H	ENCAPSULANT
	7		
	8		
	9		
	10		
	11		
	12		

DIRECTION OF WINDING TO BE CLOSELY FOLLOWED AS SHOWN IN SKETCHES. ALL LEADS TO BE 1 INCH LONG. TIN LEADS BACK 3/4 INCH.



TOLERANCES UNLESS OTHERWISE SPECIFIED	SCALE
DEC DIM X = .05 FRAC DIM XX = .01 ANGULAR DIM 64 XXX = .005	DRILL PUNCH, COMMERCIAL STOCK SIZES AND MANUFACTURERS TOLERANCES ARE NOT INCLUDED

MODEL	PROJECT NO	DATE
TTRR-4BE	067/68	SEPT 3/68

TMC (Canada) LIMITED OTTAWA ONTARIO	
TRANSFORMER RF, TUNED	
AP	AP
CHECKED	FINAL APPROVAL
	TT10006-45B