

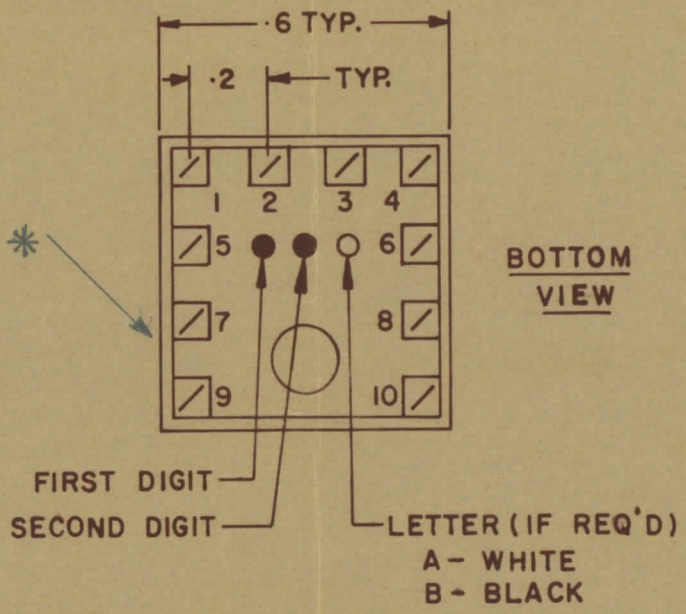
IF IT IS FOUND DESIRABLE TO CHANGE ANY TOLERANCE OR OTHER DETAIL SPECIFIED ON THIS DRAWING NOTIFY THE PURCHASER PROMPTLY				DIMENSIONS IN INCHES UNLESS OTHERWISE SPECIFIED			
MAXIMUM ALLOWABLE TOLERANCES HAVE BEEN DETERMINED AND DEVIATIONS WILL BE CAUSE FOR REJECTION REMOVE ALL BURRS AND SHARP EDGES				OTHERWISE SPECIFIED			
ISSUE	ITEM	CHANGED FROM	DATE	CN NO	DRAFTS	CHECKER	ENG APP
Ø		REL. TO PROD.	JAN 30/68		RPL		<i>[Signature]</i>
A		REV. AS PER CEMN	MAY 15/68	364	RPL		<i>[Signature]</i>
B		REV AS PER CEMN	DEC 7/72	1208	PVM		<i>[Signature]</i>

TT10002-31B B

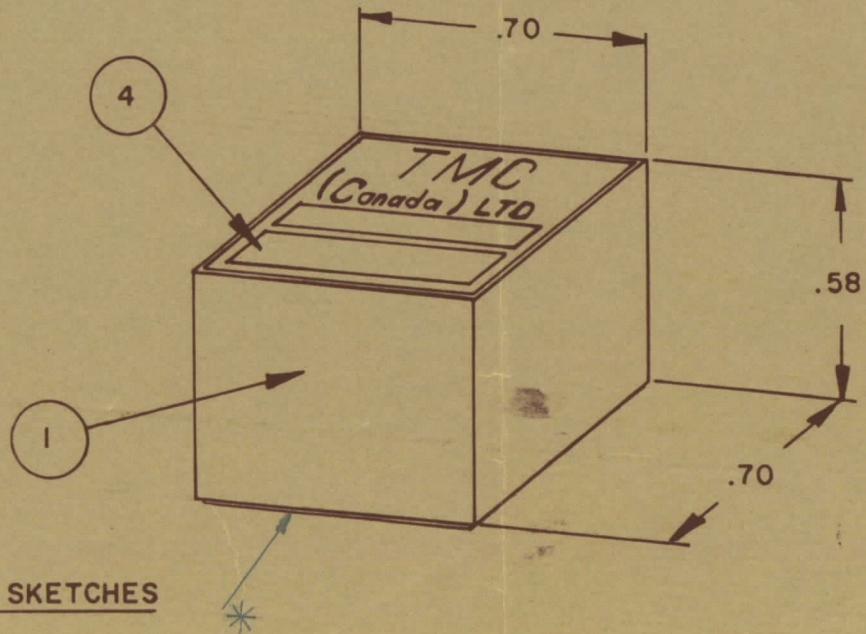
NOTE:-
 1- COLOUR CODE INDICATES LAST TWO DIGITS AND LETTER IN TMC PART NO.
 2- * -INDICATES POSITION OF NAMEPLATE.

ASSEMBLY INSTRUCTIONS:-

- WIND 10 TURNS OF ITEM 3 AS SHOWN IN SKETCH 1.
- WIND 3 TURNS OF ITEM 7 AS SHOWN IN SKETCH 2.
- WIND --- TURNS OF ITEM --- AS SHOWN IN SKETCH 3.
- DIP COIL IN ITEM 5 AND BAKE FOR 1/2 HR. AT 125 °F.
- REMOVE 1 TURNS FROM THE PRIMARY IF NECESSARY TO OBTAIN THE FOLLOWING AT TEST FREQ. OF 7.9 MHZ.
 - INDUCTANCE IN μ H. 1.5 \pm .4
 - Q MINIMUM ---
- MAXIMUM NUMBER OF TURNS TO BE REMOVED 1
- MOUNT TRANSFORMER ON BASE & CONNECT WIRES TO CORRESPONDING PINS.
- INSTALL ITEM 8 BETWEEN PINS --- & ---.
- INSTALL ITEM 8 BETWEEN PINS --- & ---.
- INSTALL ITEM 8 BETWEEN PINS 9 & 10.
- POT TRANSFORMER USING ITEM 6 AS PER SPEC. S10149.
- COLOUR CODE BOTTOM OF TRANSFORMER ORN, BRN, BLK.
- INSTALL NAMEPLATE.



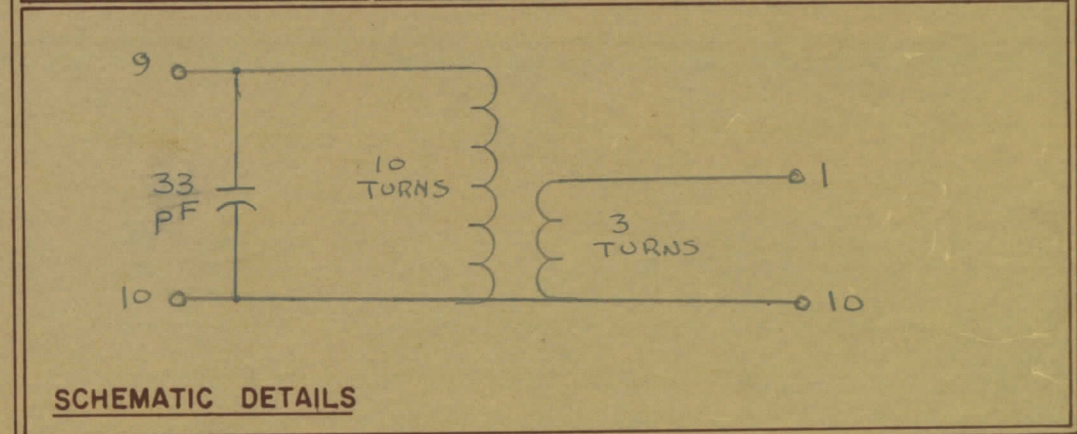
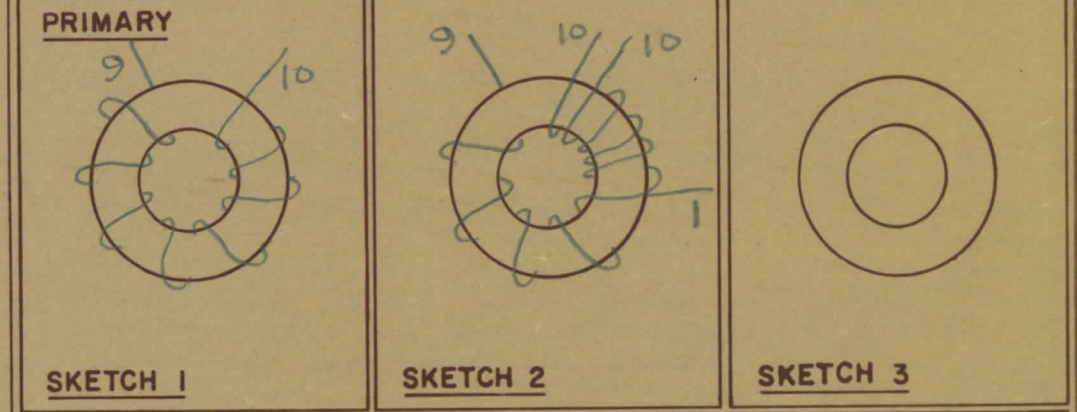
COLOUR CODE MARKING



TYPICAL FOR ALL SKETCHES

REQ	ITEM	PART NO	DESCRIPTION
1	1	BPI0011	COIL CASE ASSEMBLY
1	2	CI-10011-1-Q2	CORE
AR	3	WI-123-28	WIRE MAGNET
1	4	NP 10157	NAMEPLATE
AR	5	GL 130	Q-DOPE
AR	6	GL 10005-3110 H	ENCAPSULANT
AR	7	WI-122-30	WIRE MAGNET
1	8	CK05Bx330K	CAPACITOR, FIXED
	9		
	10		
	11		
	12		

-:DIRECTION OF WINDING TO BE CLOSELY FOLLOWED AS SHOWN IN SKETCHES. ALL LEADS TO BE 1 INCH LONG. TIN LEADS BACK 3/4 INCH.



STOCK SIZE		TMC (Canada) LIMITED OTTAWA ONTARIO	
MATERIAL		TRANSFORMER RF,	
WEIGHT PER PC		TUNED	
TYPE & TEMPER		E.T. DRAWN	<i>[Signature]</i> ELEC DES APP
HEAT TREAT SPEC		RPL CHECKED	<i>[Signature]</i> MECH DES APP
FINISH & SPEC NO		FINAL APPROVAL	

TOLERANCES UNLESS OTHERWISE SPECIFIED	SCALE
ALL OTHERS	X = .05
DEC DIM	.XX = .01
FRAC DIM 1/64	.XXX = .005
ANGULAR DIM 0°30'	
DRILL, PUNCH, COMMERCIAL STOCK	
SIZES AND MANUFACTURERS	
TOLERANCES ARE NOT INCLUDED	

MODEL	PROJECT NO	ASSY NO	DATE
TTRR(3B)D	067/68		29 JAN 68
USED ON			

TT10002-31B B