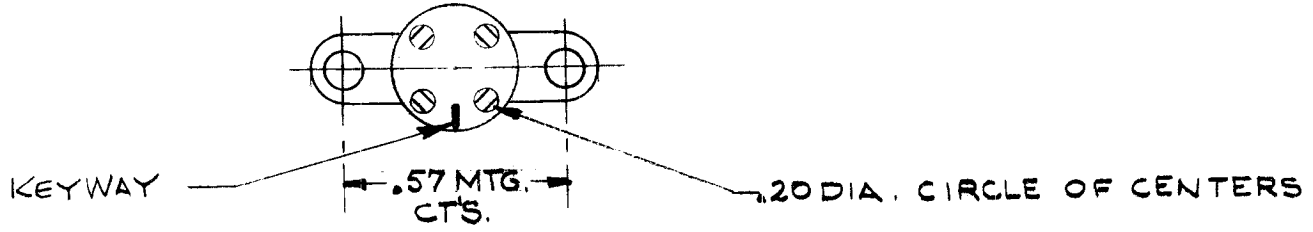


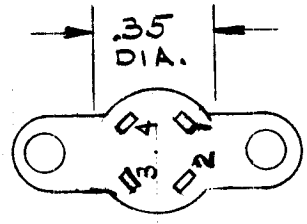
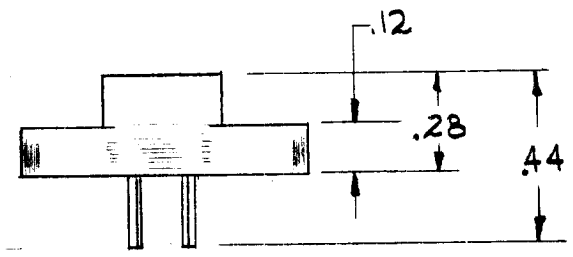
STANDARD DRAWING

REQ. PER UNIT 3	USED ON			TS-147	△
	MODEL	ASS'Y. NO.	DATE		
	CSS		4-19-60		



CONTACTS: SILVER PLATED BERYLLIUM-COPPER W/ GOLD FLASH.

Socket: Molded of MICA FILLED PHENOLIC.



THE TECHNICAL MATERIEL CORP. # 22-11

REQ.	ITEM	PART NO.	DESCRIPTION				SYMBOL
			THE TECHNICAL MATERIEL CORP. MAMARONECK, NEW YORK.				
			STOCK SIZE				
			TRANSISTOR SOCKET				
			MATERIAL				
A			DIM. .35 WAS 35; Reloc. KEYWAY 4/4/66 16053 HLA JG R				
ISSUE	ITEM	CHANGED FROM	DATE	CH. NO.	DRAFTS	CHECKER	ENG. APP.
TOLERANCES			SCALE:				
DEC. DIM. ±			MAXIMUM ALLOWABLE TOLERANCES HAVE BEEN DETERMINED AND ANY DEVIATIONS WILL BE CAUSE FOR REJECTION.				
FRAC. DIM. ±			REMOVE ALL BURRS AND SHARP EDGES				
ANGULAR DIM. ±							
TYPE & TEMPER		HEAT TREAT. SPEC.		DRAWN		CHECKED	
				JG		HWA	
FINISH & SPEC. NO.		ELEC. DES. APP.		MECH. DES. APP.		FINAL APPROVAL	
						TS-147	
						A	