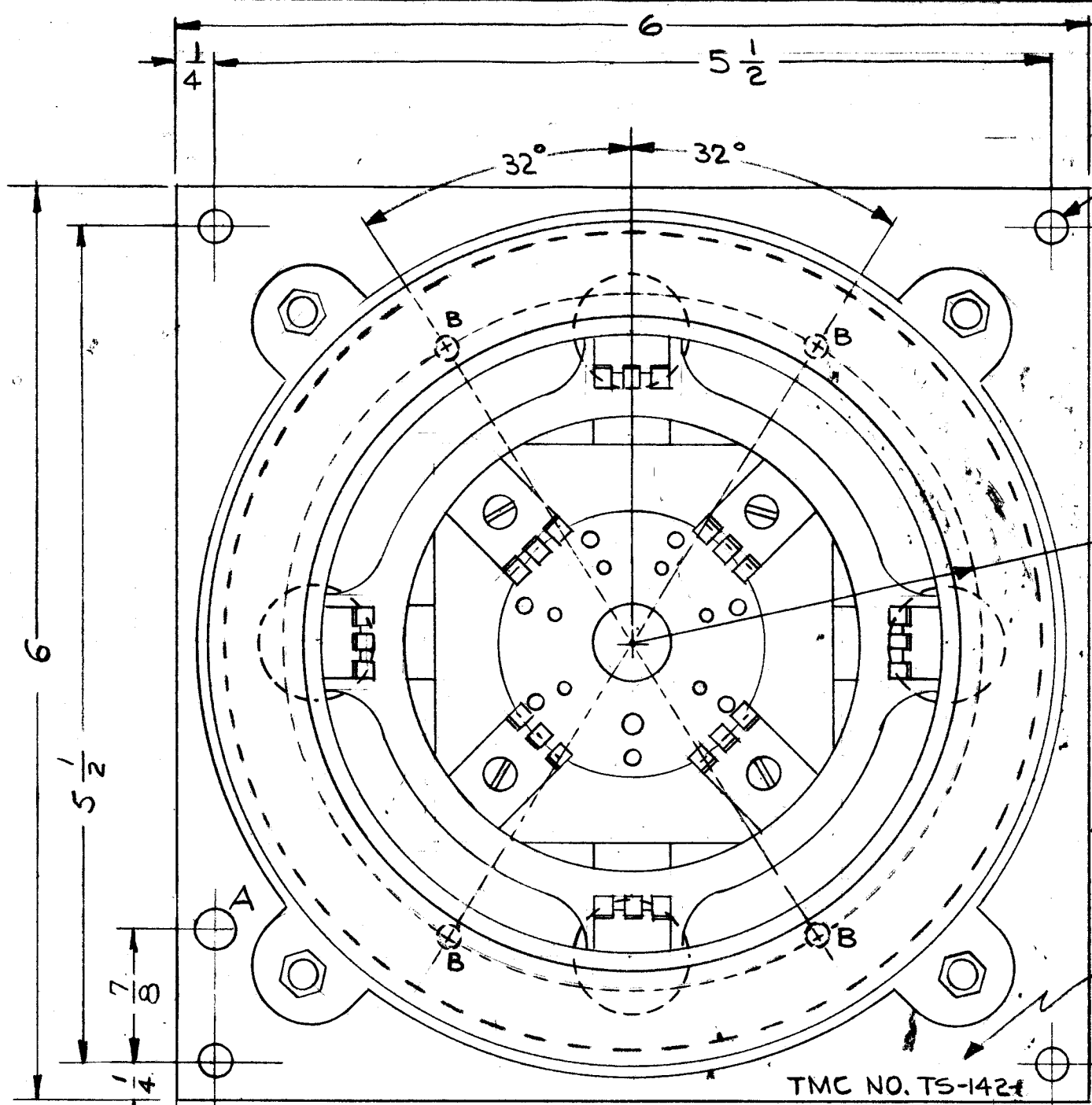


TS142 J

STANDARD DRAWING



THESE HOLES DRILLED BY SOCKET MFR. A = 1/4 DIA. HOLE (1) REQ'D. B = 1/8 DIA - (4) REQ'D.

.160 DIA (4 REQ)

2 9/32 R.

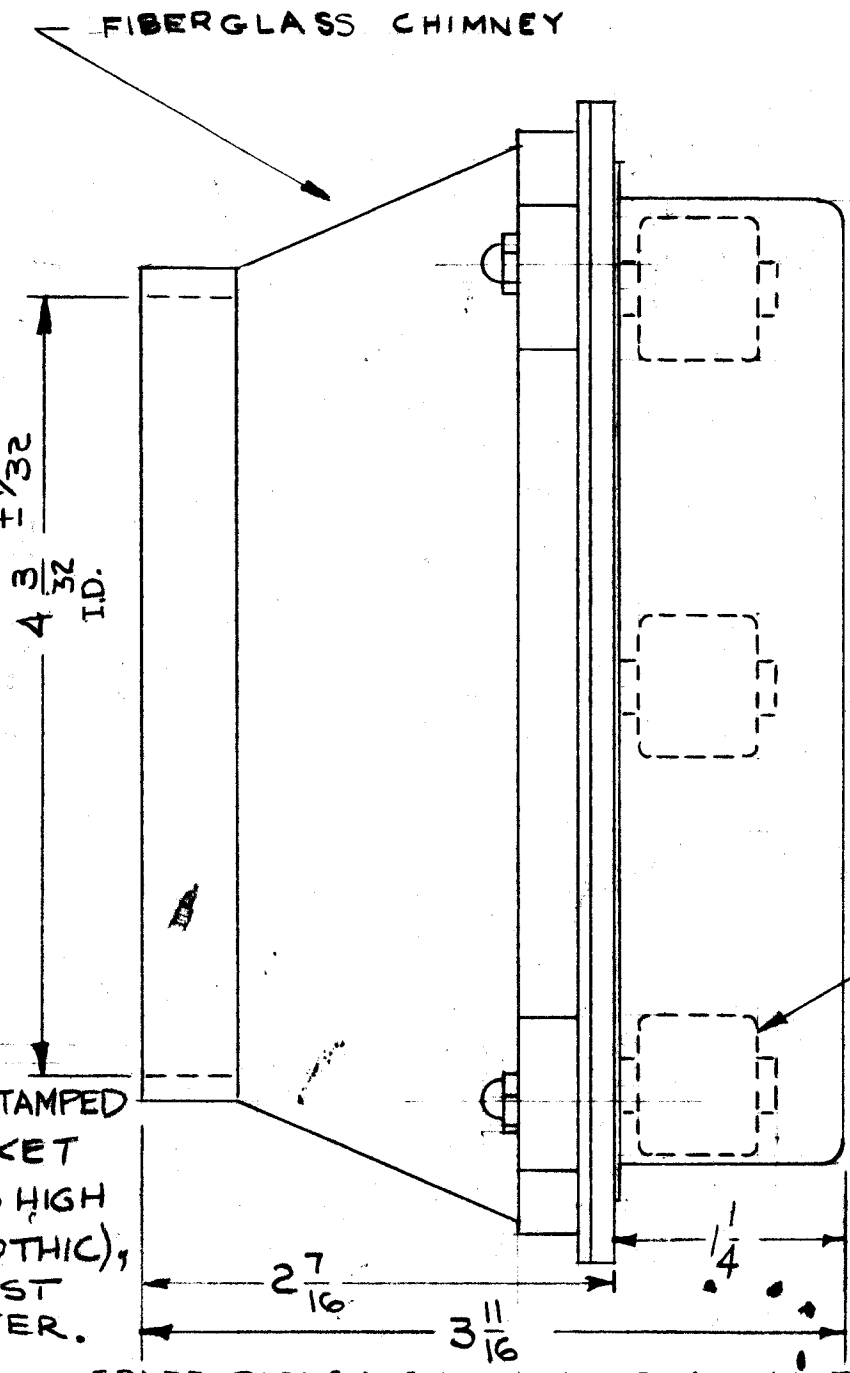
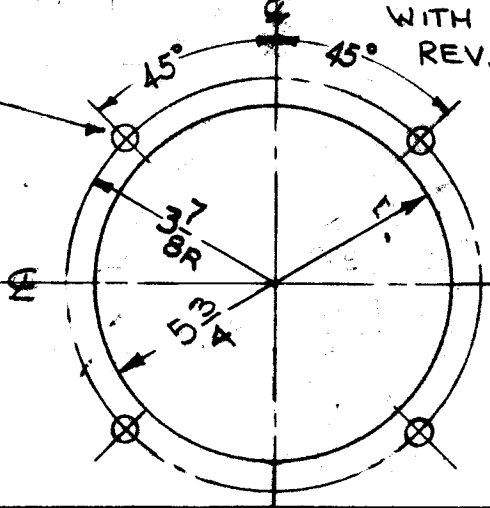
SUPPRESSOR GRID TERMINAL

NOTE - TMC PART NO. "TS-142" TO BE STAMPED ON TOP OF SOCKET AS SHOWN. (1/8 HIGH BLACK GOTHIC), WITH LATEST REV. LETTER.

TMC NO. TS-142

11/64 4-REQ'D.

MOUNTING DETAIL



SPARE PARTS: CHIMNEY - TMC P/N TS142-MFG P/N PL-C184. NOTE: HI-POT TEST FROM SCREEN TERMINAL TO BASE PLATE - 1000 VOLTS

500 MMF 5 KV CAPACITOR (4 REQ)

ISSUE	ITEM	CHANGED FROM	DATE	CH. NO.	DRAFTS	CHECKER	DES. APP.
J	1	ADD SPARE PARTS NOTE	9-15-66	16850	RME	<i>[Signature]</i>	<i>[Signature]</i>
	2	HOLE DIM WAS .170					
TOLERANCES			SCALE: S-401-57(PL-184 A)				
DEC. DIM. ±			MAXIMUM ALLOWABLE TOLERANCES HAVE BEEN DETERMINED AND ANY DEVIATIONS WILL BE CAUSE FOR REJECTION.				
FRAC. DIM. ±			REMOVE ALL BURRS AND SHARP EDGES				
ANGULAR DIM. ±							

REQ. PER UNIT	MODEL	PROJECT NO.	ASS'Y. NO.	DATE
USED ON				

REQ. ITEM	PART NO.	DESCRIPTION	SYMBOL
		THE TECHNICAL MATERIEL CORP. MAMARONECK. NEW YORK	
	STOCK SIZE		
		SOCKET, TUBE (FOR TV-100)	
	MATERIAL		
		DRILLED	<i>[Signature]</i>
	TYPE & TEMPER	HEAT TREAT. SPEC.	DRAWN
			CHECKED
	FINISH & SPEC. NO.	ELEC. DES. APP.	MECH. DES. APP.
			<i>[Signature]</i>
			<i>[Signature]</i>
			TS142 J