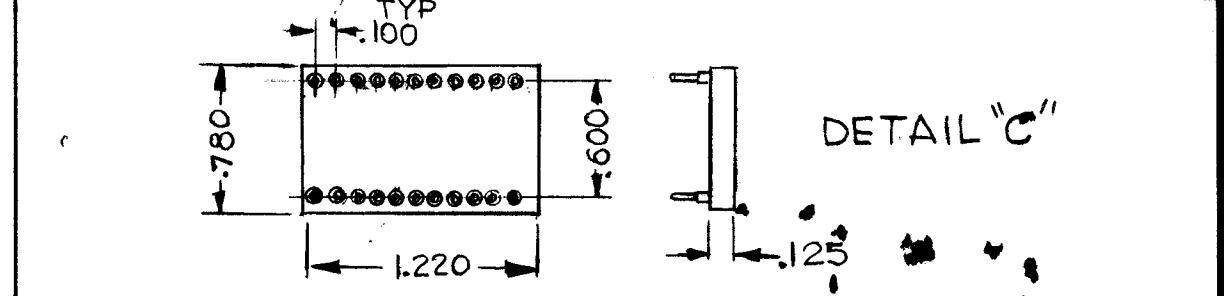
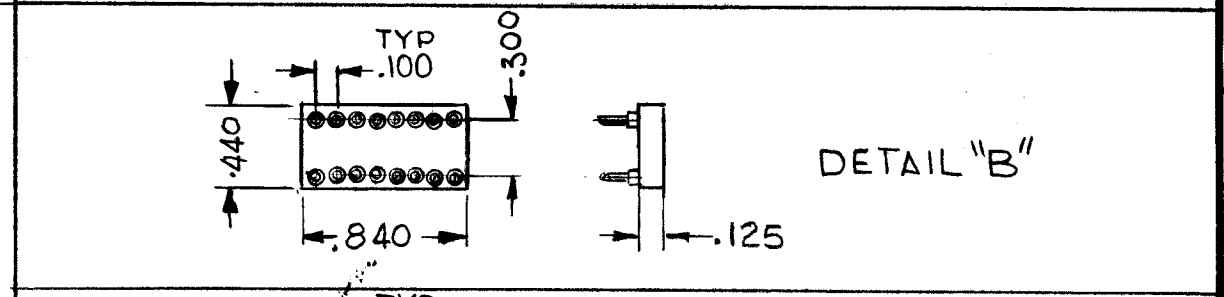
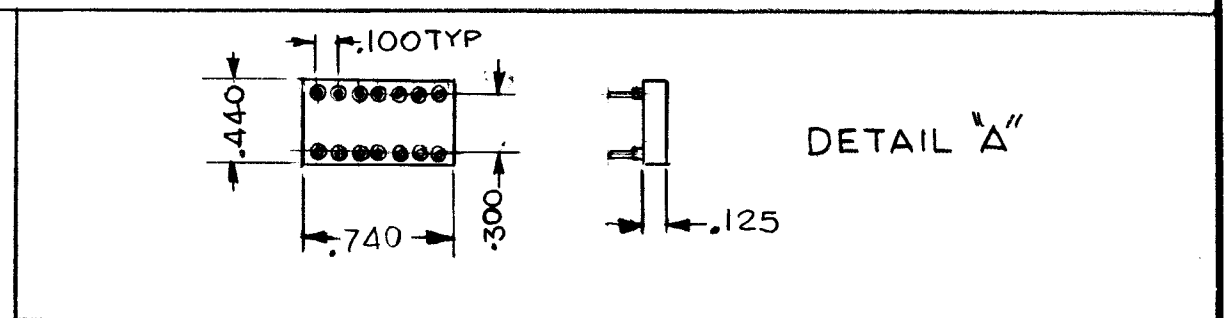
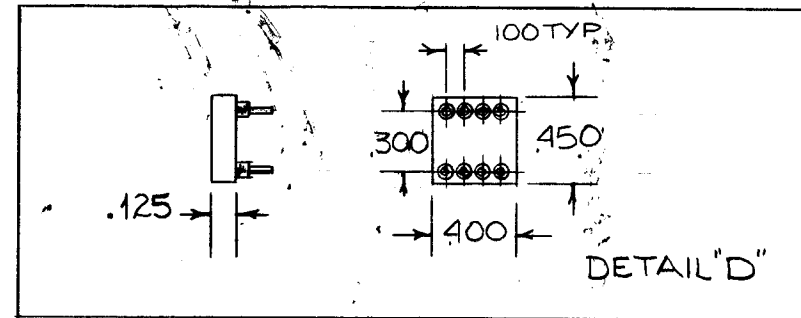


| TMC PART NO | MFG PART NO. | NO. OF CONTACT | PROFILE     | DETAIL |
|-------------|--------------|----------------|-------------|--------|
| TS 211      | 800-017B-14  | 14             | LOW PROFILE | "A"    |
| TS 211-2    | 800-017B-16  | 16             | LOW PROFILE | "B"    |
| TS 211-3    | 800-017B-24  | 24             | LOW PROFILE | "C"    |
| TS 211-4    | 508 AG 100 * | 8              | LOW PROFILE | "D"    |

| REVISIONS |     |                         |         |          |       |           |
|-----------|-----|-------------------------|---------|----------|-------|-----------|
| ZONE      | LTR | DESCRIPTION             | DATE    | E.M.N.NO | DRAFT | CHKD APPD |
|           | Ø   | ORIG REL FOR PRODUCTION | 7/24/76 |          | cl    |           |
|           | A   | ADDED DETAIL "D"        | 2/3/78  | 21620    | CS    | K.P.      |

DIMENSIONS ARE FOR REF. ONLY



\* S401-105

| QTY / UNIT | MODEL USED ON | ASS'Y NO. |
|------------|---------------|-----------|
|            | APPLICATION   |           |
|            | CODE          | S401-105  |

**NOTICE TO PERSONS RECEIVING THIS DRAWING**  
 THE TECHNICAL MATERIEL CORPORATION claims proprietary right in the material disclosed hereon. This drawing is issued in confidence for engineering information only and may not be reproduced or used to manufacture anything shown hereon without permission from THE TECHNICAL MATERIEL CORPORATION to the user. This drawing is loaned for mutual assistance and is subject to recall at any time.

|   |  |
|---|--|
| UNLESS OTHERWISE SPECIFIED DIMENSIONS ARE IN INCHES AND INCLUDE CHEMICALLY APPLIED OR PLATED FINISHES |  |
| DECIMALS<br>.X ± .05<br>.XX ± .01<br>.XXX ± .005  | FRACTIONS<br>1/64<br>ANGLES<br>0° .30' |
| MATERIAL  |  |
| FINISH  |  |

| REQ'D | ITEM | PART NUMBER | DESCRIPTION | SYM. |
|-------|------|-------------|-------------|------|
|       |      |             |             |      |

LIST OF MATERIAL

|  |                 |         |       |
|--|-----------------|---------|-------|
| FINAL APPROVAL <i>[Signature]</i> DATE 7/28/76 |                 |         |       |
| MECH. DES. <i>[Signature]</i> DATE             |                 |         |       |
| ELECT. DES. DATE                               |                 |         |       |
| CHECKED <i>[Signature]</i> DATE 4-22-76        |                 |         |       |
| DRAWN <i>[Signature]</i> DATE 4-22-76          |                 |         |       |
| SIZE   | CODE IDENT. NO. | DWG NO. | ISSUE |
| B  | 82679           | TS 211  | A     |
| SCALE  | 1:1             | SHEET   | OF    |

THE TECHNICAL MATERIEL CORP.  
 MAMARONECK, NEW YORK

SOCKET, DUAL INLINE I.C.