

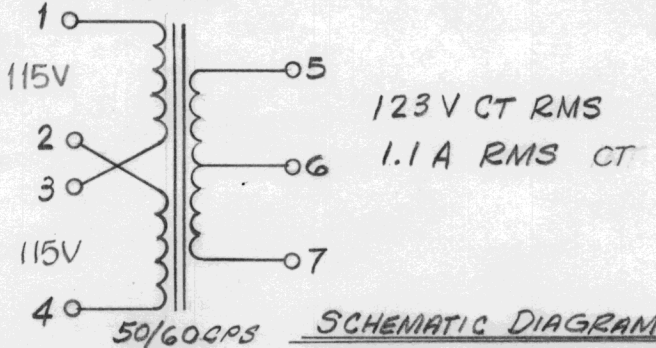
REQ. PER UNIT	USED ON		
	MODEL	ASS'Y. NO.	DATE
	TPCK-1		6-21-65
	TPC-11		6-21-65
	SMC-1		6-21-65

TF312 A

SPECIFICATIONS
PRIMARY WINDING: VOLTAGE: 115/230 VAC
 FREQ.: 50/60 CPS
 PHASE: 1
SECONDARY WINDING: VOLTAGE: 123 VRMS
 CENTERTAP @ 61.5V
 CURRENT RATING: 1.1A
TERMINALS: No.: 7, TYPE: SOLDER LUG, FINISH: HOT TIN
CASE FINISH: GRAY
STAMPING: MARKING PROCESS AS PER TMC SPEC. S-727. LETTERING TO BE BLACK GOTHIC LOCATED AS PER NOTE BELOW.

THE TECHNICAL MATERIEL CORP.
 MAMARONECK NEW YORK

NOTE: LETTERING & SCHEMATIC TO BE MARKED ON TOP OF TRANSFORMER



SYM	DESCRIPTION	DATE	CH. NO.	DRAFTS	CHECKER	ENG. APP.
A	CLERICAL CHANGE	1/12/65	CC	J.V.	JCB	
Ø	ORIGINAL RELEASE FOR PRODUCTION	8-2-65	#	JC		
UNLESS OTHERWISE SPECIFIED DIMENSIONS ARE IN INCHES AND INCLUDE CHEMICALLY APPLIED OR PLATED FINISHES		SCALE	#			
DECIMALS .X ± .05 .XX ± .01 .XXX ± .005	TOLERANCES	FRACTIONS ± 1/32 ANGLES ± 0° 30'	CODE C	S401-30 (6525)		

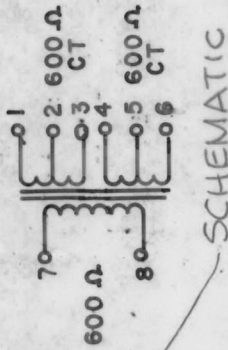
REQ. ITEM	PART NO.	POSE	DESCRIPTION	SYMBOL
#			THE TECHNICAL MATERIEL CORP. MAMARONECK, NEW YORK	
#	STOCK SIZE		TRANSFORMER, POWER	
#	MATERIAL			
#	TYPE & TEMPER	H. AUSTIN	JCB	FINAL APPROVAL
#	HEAT TREAT. SPEC.			
#	FINISH & SPEC. NO.			
				TF312 A

STANDARD DRAWING

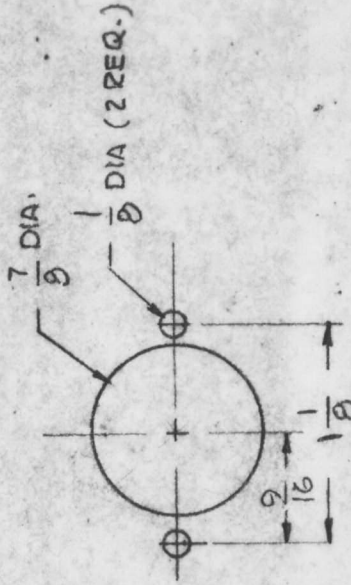
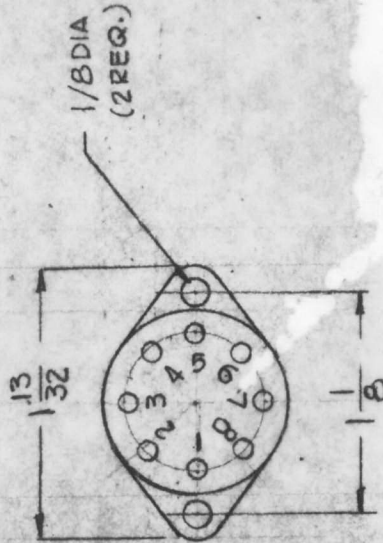
REQ. PER UNIT	MODEL	USED ON
	SMC-1	TF317
Z	ASS'Y. NO.	DATE
		6-16-65



MARK TMC PT. NO.
W/LATEST REV.
LETTER



SCHEMATIC



MTG. HOLES

CASE MATERIAL: STEEL HERMETICALLY SEALED
FINISH: TMC GRAY S115
MARKING: TMC PART NUMBER AND SCHEMATIC TO BE STAMPED ON SIDE IN BLACK.
MANUFACTURED IN ACCORDANCE WITH MIL-T-27 EXCEPT QUAL. TEST NOT REQUIRED.

ELECT SPECS.

IMPEDANCE - PRI. 600Ω
2 SEC. 600Ω EA. CT.
POWER - 200MW
FREQ. RESPONSE - 200 - 10,000 CPS.
TERMINALS - SOLDER HEADER (GLASS BEAD)

REQ. ITEM	PART NO.	DESCRIPTION	SYMBOL
		THE TECHNICAL MATERIEL CORP. MAMARONECK, TRANSFORMER, AUDIO	
		STOCK SIZE	
		MATERIAL	
		TYPE & TEMPER	
		HEAT TREAT. SPEC.	
		FINISH & SPEC. NO.	
		DATE	
		CH. NO.	
		DRAFTS	
		CHECKER	
		ENG. APP.	
		SCALE	
		DO NOT SCALE	
		CODE	
		TOLERANCES	
		FRACTIONS	
		UNLESS OTHERWISE SPECIFIED	
		DIMENSIONS ARE IN INCHES AND INCLUDE	
		CHEMICALLY APPLIED OR PLATED FINISHES	
		TOLERANCES	
		± 1/64	
		ANGLES	
		± 0° 30'	
		DECIMALS	
		± .01	
		± .005	
		ORIGINAL RELEASE	
		DATE	
		9/28/65	
		G.D.L.	
		DRAWN	
		CHECKED	
		FINAL APPROVAL	
		9/29/65	
		TF317	
		ELEC. DES. APP.	
		MECH. DES. APP.	

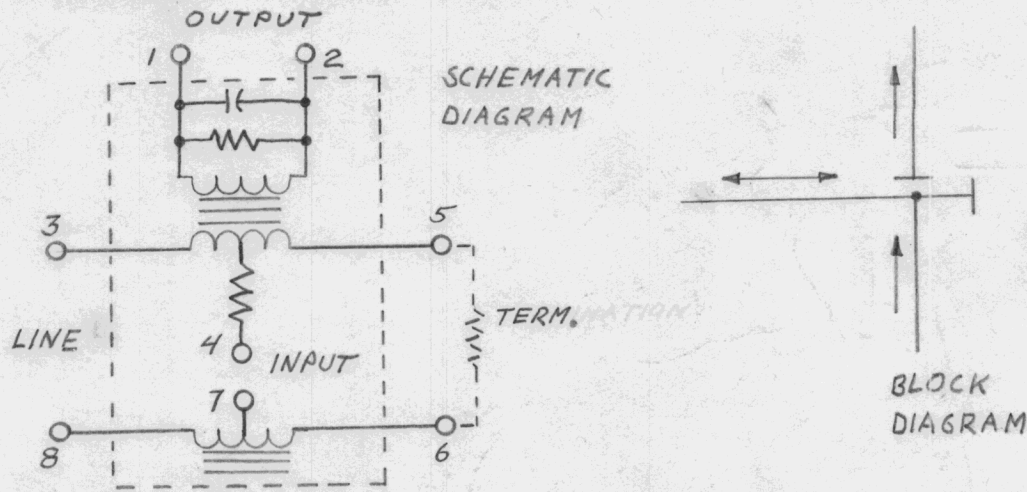
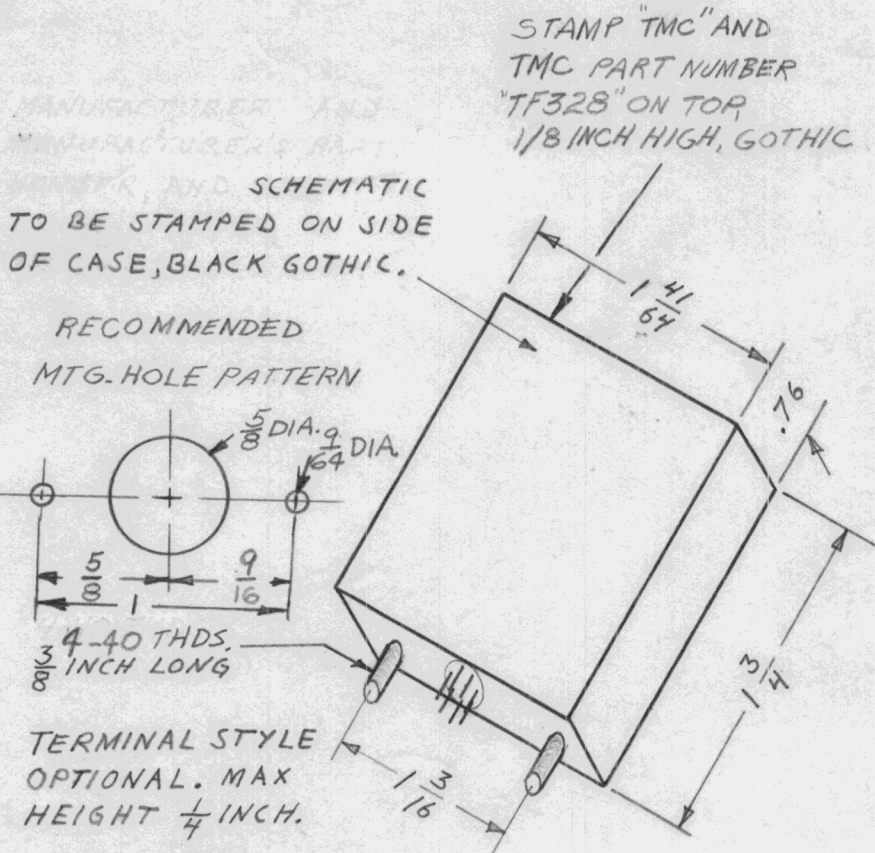
STANDARD DRAWING

REQ. PER UNIT	USED ON		
	MODEL	ASS'Y. NO.	DATE
1	RARB-1		10 June 65
1	RASB-1		10 June 65

TF 328 A

SPECIFICATIONS AT 1000 CPS

INSERTION LOSS - INPUT TO LINE: -10db Max.
 LINE TO OUTPUT: -5db Max.
 INPUT TO OUTPUT: -60db Min.
 IMPEDANCE - LINE: 600 ohm Balanced
 OUTPUT: 600 ohm
 INPUT: 600 ohm Balanced
 TERMINATION: 600 ohm Balanced
 OPERATING LEVEL: +14dbm Max. 0dbm Nom.
 FREQUENCY RESPONSE: 250 CPS to 6Kc: ±1db
 HERMETICALLY SEALED: Per MIL-T-27 (Grade 1, Class R)
 CASE: Cold Rolled Steel
 TEMPERATURE RANGE: -40° C. to +105° C.
 TERMINALS: Solder Posts (8)



REQ.	ITEM	PART NO.	LANGER/DEWEY DESCRIPTION				SYMBOL
			THE TECHNICAL MATERIEL CORP. MAMARONECK. NEW YORK				
			TRANSFORMER, HYBRID, 600 ohm				
			MATERIAL				
					7 RD 10 JUNE 65	JCS	MM/Key 6/10/65
			TYPE & TEMPER	HEAT TREAT. SPEC.	DRAWN	CHECKED	FINAL APPROVAL
			Grey Enamel		ADP	JC 6-10-65	TF 328
			FINISH & SPEC. NO.		ELEC. DES. APP.	MECH. DES. APP.	A
			S401-397 (HT-11)				
			UNLESS OTHERWISE SPECIFIED DIMENSIONS ARE IN INCHES AND INCLUDE CHEMICALLY APPLIED OR PLATED FINISHES				
			SCALE DO NOT SCALE				
			DECIMALS .X ± .05 .XX ± .01 .XXX ± .005	TOLERANCES	FRACTIONS ± 1/64 ANGLES ± 0° 30'	CODE C	

APPLICATION

REVISIONS

QTY	MODEL USED ON	ASS'Y NO.	LTR	DESCRIPTION	DATE	E.M.N.NO	DRAFT	CHKD	AF.
	AK101A		X	EXPERIMENTAL RELEASE	9/30/69		C.V.		
	AK102A		Ø	ORIG. RELEASE FOR PROD.	2/28/69		RG		

SPECIFICATIONS

IMPEDANCE

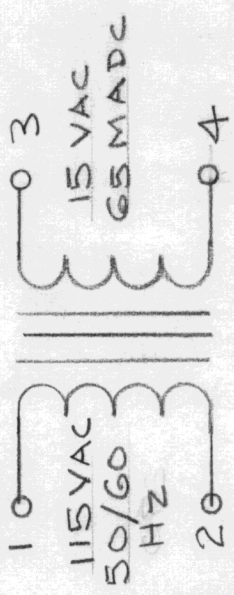
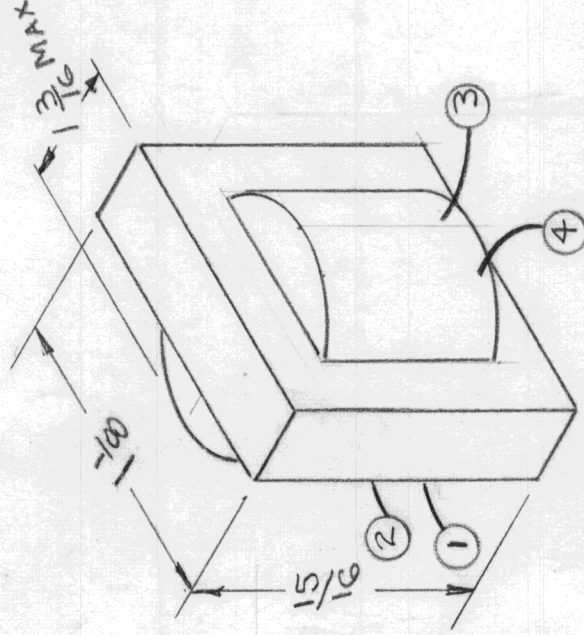
PRIMARY: 115 VAC
 SECONDARY: 115 VAC @65 MADC
 FREQ. RANGE: 50/60 Hz

CASE DATA:

TYPE: CHANNEL FRAME
 MATERIAL: STEEL
 FINISH: CADMIUM PLATED

TERMINAL DATA:

4 WIRE LEADS



UNLESS OTHERWISE SPECIFIED DIMENSIONS ARE IN INCHES AND INCLUDE CHEMICALLY APPLIED OR PLATED FINISHES

DECIMALS 1/64
 .X ± .05 TOLS. ANGLES
 .XX ± .01 0° - 30'
 .XXX ± .005

MATERIAL

FINISH

S401-30(1552)

REQ'D	ITEM	PART NUMBER	DESCRIPTION	SYM.
F. BUDETTI				
FINAL APPROVALS	<i>[Signature]</i>	DATE	2/30/69	
MECH. DES.		DATE		
ELECT. DES.	<i>[Signature]</i>	DATE	2/27/69	
CHECKED	<i>[Signature]</i>	DATE		
DRAWN	<i>[Signature]</i>	DATE	2/26/69	

LIST OF MATERIAL

THE TECHNICAL MATERIEL CORP.
 MAMARONECK, NEW YORK

TRANSFORMER, STEP-DOWN

SIZE A CODE IDENT. NO. 82679 DWG NO. TF 348

ISSUE Ø

SCALE SHEET OF

NOTICE TO PERSONS RECEIVING THIS DRAWING
 THE TECHNICAL MATERIEL CORPORATION claims proprietary right in the material disclosed hereon. This drawing is issued in confidence for engineering information only and may not be reproduced or used to manufacture anything shown hereon without permission from THE TECHNICAL MATERIEL CORPORATION to the user. This drawing is loaned for mutual assistance and is subject to recall at any time.

APPLICATION

QTY MODEL USED ON ASSY NO.

MMX-1

LTR

X

DESCRIPTION

EXP RELEASE

DATE

4/17/67

E.M.N.NO

X

DRAFT

CV

CHKD

J. De

APPD

J. De

REVISIONS

Ø ORIGINAL RELEASE

4/18/67

TMC P/N	MFG P/N	PRI IMP	SEC IMP	OPER LEVEL	MFG CODE
TF359	DI-T260	1,500 CT	600 CT	500 Mw MAX	S401-29

MECHANICAL SPECIFICATIONS

CASE:

MATERIAL: HERMETICALLY SEALED; 5/16 DIA X 3/8 HIGH

LEADS: DUMET WIRE; GOLD PLATED .017 DIA APPROX 1" LONG; LOCATED ON .100 INCH RADIUS EQUALLY SPACED

REFERENCE: MIL T-27 GRADE 4, CLASS R
MIL TYPE TF4R13YY

UNLESS OTHERWISE SPECIFIED
DIMENSIONS ARE IN INCHES
AND INCLUDE CHEMICALLY APPLIED
OR PLATED FINISHES

DECIMALS .X ± .05
.XX ± .01
.XXX ± .005

FRACTIONS 1/64
TOLS. ANGLES
0° 30'

MATERIAL

FINISH

REQ'D	ITEM	PART NUMBER	DESCRIPTION	SYM.
LIST OF MATERIAL				
FINAL APPROVAL	<i>[Signature]</i>	DATE 4/17/67	THE TECHNICAL MATERIEL CORP. MAMARONECK, NEW YORK TRANSFORMER, AUDIO LINE MATCHING	
MECH. DES.	<i>[Signature]</i>	DATE 4/17/67		
ELECT. DES.	<i>[Signature]</i>	DATE 4/17/67		
CHECKED	<i>[Signature]</i>	DATE 4/17/67		
DRAWN	<i>[Signature]</i>	DATE 4/17/67		

NOTICE TO PERSONS RECEIVING THIS DRAWING
THE TECHNICAL MATERIEL CORPORATION claims proprietary right in the material disclosed hereon. This drawing is issued in confidence for engineering information only and may not be reproduced or used to manufacture anything shown hereon without permission from **THE TECHNICAL MATERIEL CORPORATION** to the user. This drawing is loaned for mutual assistance and is subject to recall at any time.

SIZE

A

CODE IDENT. NO.

82679

DWG NO.

TF359

ISSUE

Ø

SCALE

SHEET

OF

APPLICATION			REVISIONS						
QTY	MODEL USED ON	ASS'Y NO.	LTR	DESCRIPTION	DATE	E.M.N.NO	DRAFT	CHKD	APPD
	BCT-10KA	AX683	X	EXPERIMENTAL RELEASE	2/12/68		C.V.		
			Ø	ORIG. RELEASE FOR PROD.	3-4-68		RG		
			A	OBSOLETE	6-15-71	20382	RF		

MFGR (TMC CODE NO.): S401-30

MFGR PART NUMBER: 7964

SPECIFICATIONS

PRIMARY: 208V, 3 PHASE

SECONDARY: 2000V, 3 PHASE

NEUTRAL TAP: 1000 V

OBSOLETE;
REPLACED BY TF 412

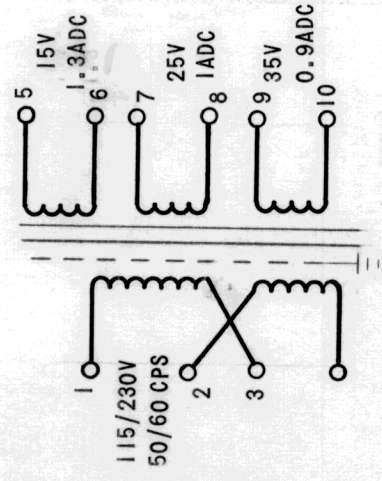
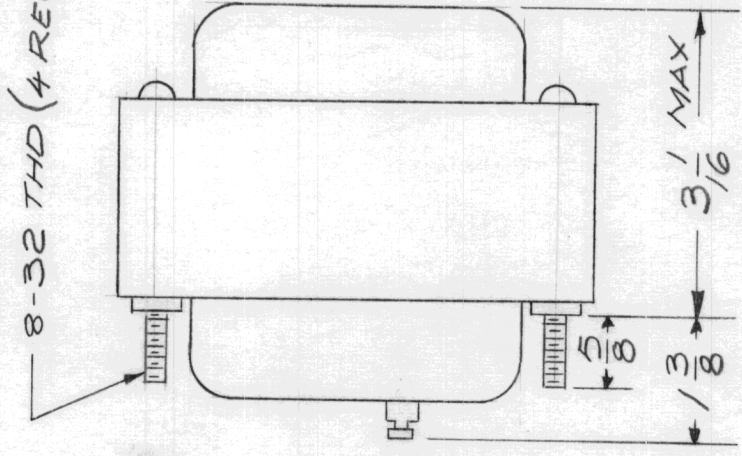
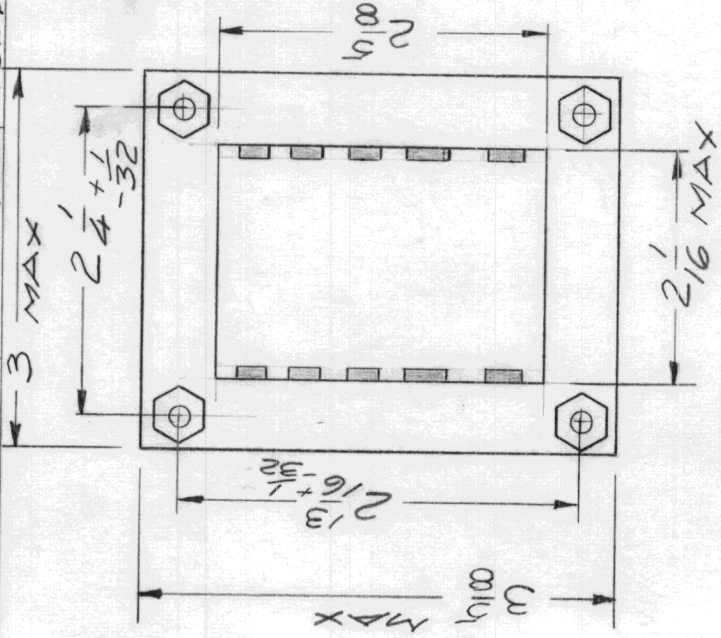
PURCHASING NOTE: VENDOR MUST INCLUDE THE FOLLOWING INFORMATION WHEN SHIPPING THIS ITEM TO TMC.

1. AN OUTLINE DRAWING OR ILLUSTRATION FROM CATALOG SHOWING ALL PERTINENT DIMENSIONS AND TOLERANCES.
2. ELECTRICAL AND/OR MECHANICAL SPECIFICATIONS AS SHOWN IN THEIR CATALOGS.

UNLESS OTHERWISE SPECIFIED DIMENSIONS ARE IN INCHES AND INCLUDE CHEMICALLY APPLIED OR PLATED FINISHES	REQ'D	ITEM	PART NUMBER	DESCRIPTION	SYM.
DECIMALS X ± .05 .XX ± .01 .XXX ± .005		F. BUDETTI		LIST OF MATERIAL	
FRACTIONS TOLS. 1/64 ANGLES 0°-30'		FINAL APPROVAL	DATE 2/16/68	THE TECHNICAL MATERIEL CORP. MAMARONECK, NEW YORK	
MATERIAL		MECH. DES.	DATE 2-26-68	TRANSFORMER, PLATE, STEP-UP	
FINISH		ELECT. DES.	DATE 2-16-68		
		CHECKED	DATE		
		DRAWN	DATE 2-16-68		

<p>NOTICE TO PERSONS RECEIVING THIS DRAWING THE TECHNICAL MATERIEL CORPORATION claims proprietary right in the material disclosed hereon. This drawing is issued in confidence for engineering information only and may not be reproduced or used to manufacture anything shown hereon without permission from THE TECHNICAL MATERIEL CORPORATION to the user. This drawing is loaned for mutual assistance and is subject to recall at any time.</p>		SIZE A	CODE IDENT. NO. 82679	DWG NO. TF 371	ISSUE A
SCALE		SHEET		OF	

APPLICATION		REVISIONS							
QTY	MODEL USED ON	ASS'Y NO.	LTR	DESCRIPTION	DATE	E.M.N.NO	DRAFT	CHKD	APPD
	HFSR-4		A	PICT. & SCHM. ADDED	32069/19368	GE			



SPECIFICATIONS

PRIMARY: 115/230 V
 SECONDARY: 15V - 1.3 ADC
 25V - 1.0 ADC
 35V - 0.9 ADC
 FRAME TYPE: OPEN

UNLESS OTHERWISE SPECIFIED DIMENSIONS ARE IN INCHES AND INCLUDE CHEMICALLY APPLIED OR PLATED FINISHES	REQ'D	ITEM	PART NUMBER	DESCRIPTION	SYM.
DECIMALS X ± .05 XX ± .01 XXX ± .005				LIST OF MATERIAL	
FRACTIONS 1/64 ANGLES 0°-30°				THE TECHNICAL MATERIEL CORP. MAMARONECK, NEW YORK	
MATERIAL				TRANSFORMER POWER STEP DOWN	
FINISH					
S401-30 (7963)					
FINAL APPROVAL OP EFM					
MECH. DES.					
ELECT. DES.					
CHECKED H. Q. SG					
DRAWN EVANGELIST					
DATE 3/25/68					
DATE					
DATE					
DATE 3/18/68					

<p>NOTICE TO PERSONS RECEIVING THIS DRAWING THE TECHNICAL MATERIEL CORPORATION claims proprietary right in the material disclosed hereon. This drawing is issued in confidence for engineering information only and may not be reproduced or used in manufacture, anything shown hereon without permission from THE TECHNICAL MATERIEL CORPORATION to the user. This drawing is loaned for mutual assistance and is subject to recall at any time.</p>		SIZE A	CODE IDENT. NO. 82679	DWG NO. TF 372	ISSUE A
SCALE MTS		SHEET OF			