

TF352 A

REVISIONS

| SYM | DESCRIPTION | DATE | E.M.N. NO. | DRAFT | CHKD | APPD |
|-----|-----------------------------------|---------|------------|--------|------|------|
| Ø | ORIGINAL RELEASE FOR PRODUCTION | 1-30-67 | | L.A.K. | | |
| A | SECONDARY WINDING CURRENT WAS .07 | 7-5-67 | 18369 | L.A.K. | | O.P. |

SPECIFICATIONS

PRIMARY WINDING:
 VOLTAGE: 115/230 VAC
 FREQUENCY: 50/60 Hz
 PHASE: 1

NOTE: ELECTRIC STATIC SHIELD BETWEEN PRIMARY & SECONDARY

SECONDARY WINDING:
 FULL LOAD:
 VOLTAGE: TERM 5-7 40 VCT
 CURRENT: 1 ADC FULL WINDING
 0.7 ADC CT WINDING

NO LOAD:
 VOLTAGE: TERM 5-7 43.3 VCT

OPERATING TEMPERATURE: 0 TO +50°C

CASE DATA:
 HERMETICALLY SEALED: YES
 CASE TYPE: STEEL CASE MIL-T-27A (GA)

TERMINAL DATA:
 NO OF TERM: 7
 TYPE: OPTIONAL

FINISH: SMOOTH GRAY ENAMEL (TMC SPEC S115) EXCEPT TERM END

MARKING: ALL TERMINALS TO BE IDENTIFIED
 SCHEMATIC AND TMC IDENTIFICATION TO BE MARKED ON SIDE AS SHOWN
 MARKING TO BE PER TMC SPEC S727

NOTE: TO BE MANUFACTURED IN ACCORDANCE WITH MIL-T-27, EXCEPT THAT MIL-T-27 SHALL NOT APPEAR ON CASE AND QUALIFICATION TESTING IS NOT REQUIRED

| REQ'D. | ITEM | PART NUMBER | DESCRIPTION | SYMBOL |
|------------------|------|-------------|--|--------|
| LIST OF MATERIAL | | | | |
| MATERIAL | | | THE TECHNICAL MATERIEL CORP. MAMARONECK, NEW YORK | |
| FINISH | | | TITLE XFMR, POWER, STEP-DOWN | |
| DRAWN | | DATE | FINAL APPROVAL | |
| CHECKED | | DATE | DATE | |
| ELECT. DES. | | DATE | DATE | |
| MECH. DES. | | DATE | DATE | |
| SHEET | | | REV. LTR. | |

| | | |
|---|---------------|---------------|
| 1 | VOX-7 | AX651 |
| Q'TY./UNIT | MODEL USED ON | ASS'Y. NO. |
| SCALE | CODE | |
| DO NOT SCALE | | S401-30(7532) |
| THE CONTENTS OF THIS DRAWING ARE THE EXCLUSIVE PROPERTY OF THE TECHNICAL MATERIEL CORP. ITS UNAUTHORIZED USE OR REPRODUCTION IN WHOLE OR IN PART IS STRICTLY FORBIDDEN. | | |
| DECIMALS | TOLERANCES | FRACTIONS |
| .X ± .05 | | ± 1/64 |
| .XX ± .01 | | ANGLES |
| .XXX ± .005 | | ± 0° 30' |

NOTES

REVISIONS

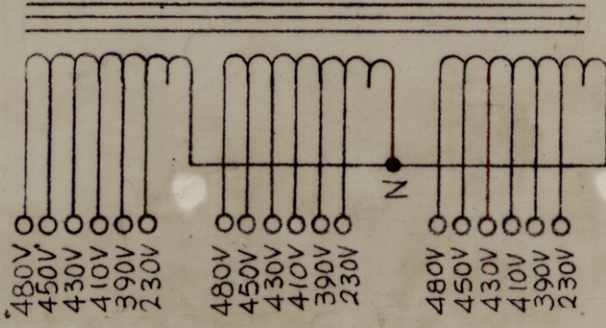
| SYM | DESCRIPTION | DATE | E.M.N. NO. | DRAFT | CHKD | APPD |
|-----|---|----------|------------|--------|------|------|
| X | EXPERIMENTAL RELEASE | 10/4/66 | M | Jc | | |
| X1 | 1/2" DIM WAS 15 1/8 MAX | 11/19/66 | M | Jc | | |
| X2 | 15/8 DIM WAS 12 | 11/11/67 | | Jc | | |
| X3 | ADDED CHANNELS 14 1/8 INFS 12 1/8 & 18 DIMENSION RELOCATED. | 2-17-67 | | L.A.K. | | |
| Ø | ORIGINAL RELEASE FOR PRODUCTION | 2-27-67 | | L.A.K. | | |

THE TECHNICAL MATERIEL CORPORATION
MAMARONECK
NEW YORK

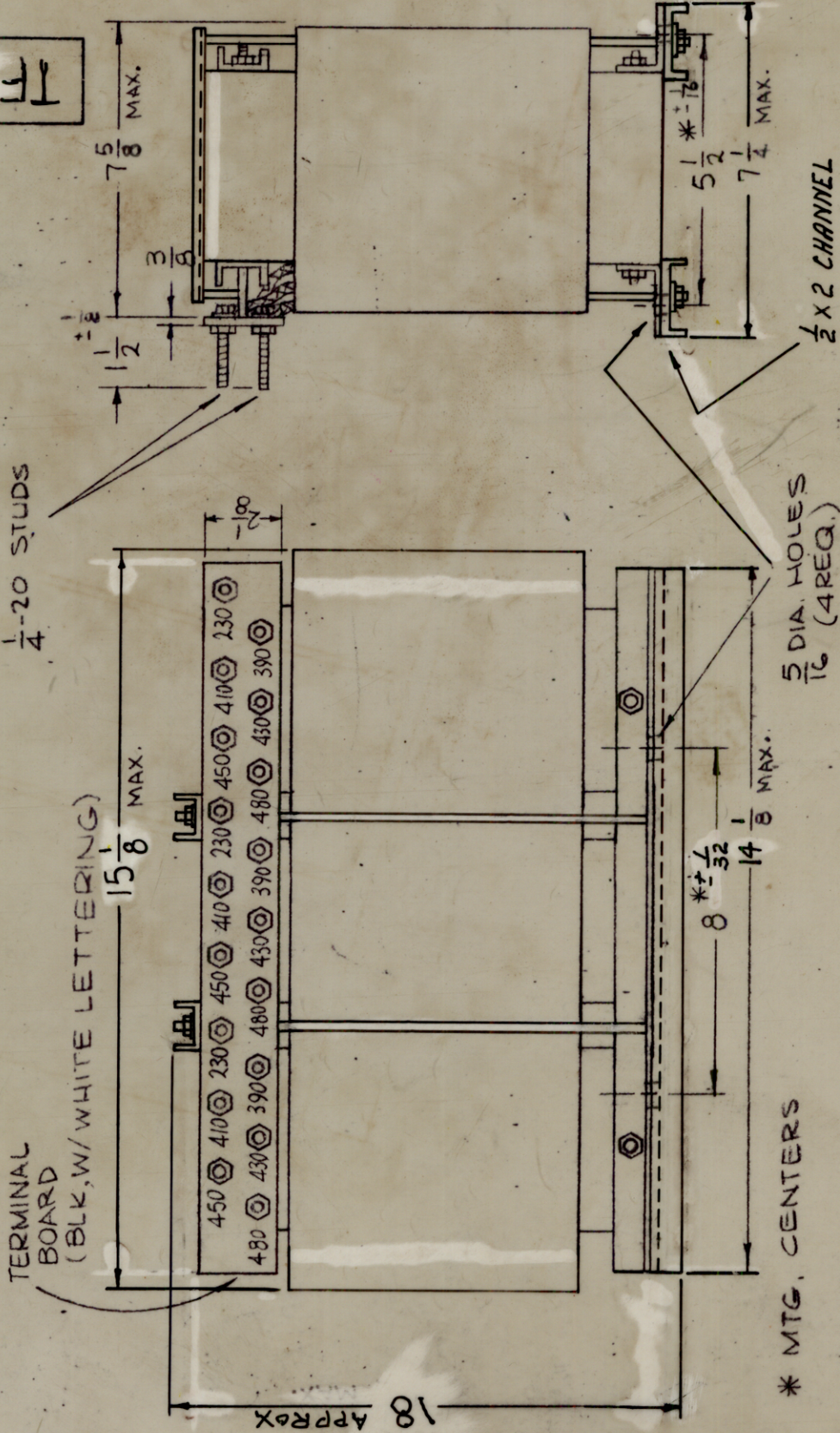
TF 353

INPUT - 480, 450, 430
410, 390 VAC
50/60 CPS
3Ø

OUTPUT - 230V
LINE TO LINE
TERMINALS
70 AMPS



SCHEMATIC - TO BE STAMPED ON XFMR,
IN WHITE.



SPECIFICATIONS:

- WINDING DATA:
 1. INPUT: 480, 450, 430, 410, 390VAC, 50/60 CPS, 3PH
 2. OUTPUT VOLTAGE: 230 V AC
 3. OUTPUT CURRENT RATING: 70 AMP RMS
 4. BREAKDOWN TEST VOLTAGE 2000V AC.
 5. CASE-OPEN FRAME.
 6. FINISH-S115 SMOOTH GREY ENAMEL
 EXCEPT TERMINAL BOARD & TERMINALS.
 7. TERMINAL BOARD 3/8" THICK.

NOTE: MFG-IN ACCORDANCE WITH/MIL-T-27A
 EXCEPT MIL-7-27A SHALL NOT APPEAR ON
 CASE AND QUALIFICATION TESTING IS
 NOT REQUIRED.

NOTES

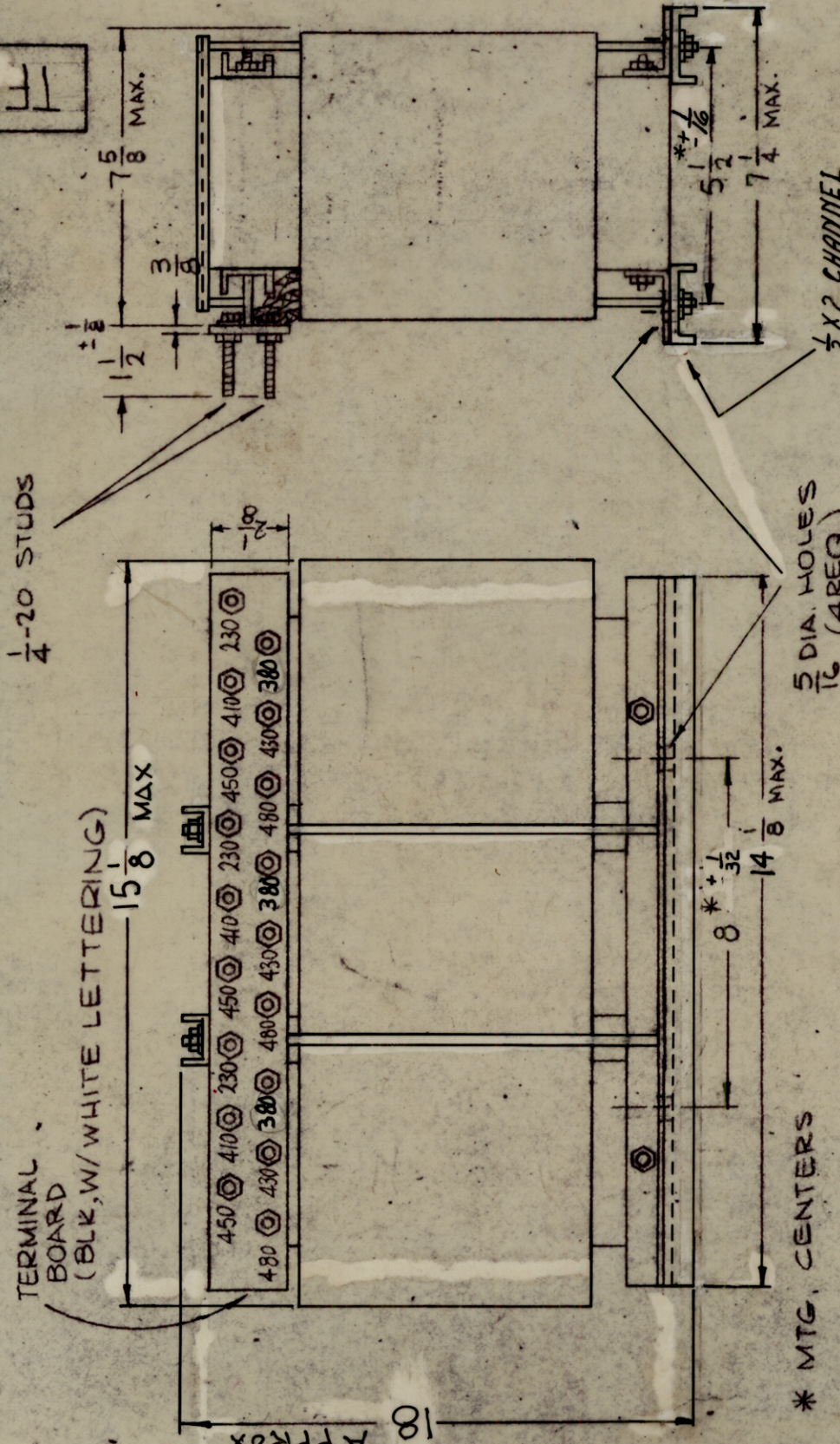
| | | |
|-----------|----------|------------------|
| QTY./UNIT | GPT10KLF | ASSY. NO. |
| SCALE | NONE | 5401-30 (7689-1) |

THE CONTENTS OF THIS DRAWING ARE THE EXCLUSIVE PROPERTY
 OF THE TECHNICAL MATERIEL CORP. ITS UNAUTHORIZED USE OR
 REPRODUCTION IN WHOLE OR IN PART IS STRICTLY FORBIDDEN.

| REQ'D. | ITEM | PART NUMBER | DESCRIPTION | SYMBOL |
|------------|------|---|--|--------|
| F. BUDETTI | | | LIST OF MATERIAL | |
| | | SEE SPECS | THE TECHNICAL MATERIEL CORP. MAMARONECK, NEW YORK | |
| | | SEE SPECS | AUTO TRANSFORMER | |
| | | UNLESS OTHERWISE SPECIFIED DIMENSIONS ARE IN INCHES AND INCLUDE CHEMICALLY APPLIED OR PLATED FINISHES | | |
| | | TOLERANCES | | |
| | | FRACTIONS ± 1/64 ANGLES ± 0° 30' | | |
| | | DECIMALS .X ± .05 .XX ± .01 .XXX ± .005 | | |
| | | DRAWN | DATE | |
| | | CHECKED | DATE | |
| | | ELECT. DES. | DATE | |
| | | MECH. DES. | DATE | |
| | | FINAL APPROVAL | DATE | |
| | | TF 353 | 2/20/67 | |
| | | SHEET | | |
| | | REV. LTR. | | |

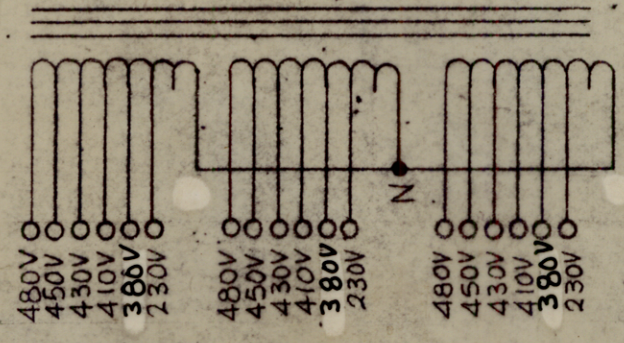
REVISIONS

| SYM | DESCRIPTION | DATE | E.M.N. NO. | DRAFT | CHKD | APPD |
|-----|--|----------|------------|--------|------|------|
| X | EXPERIMENTAL RELEASE | 10/9/66 | M | Jc | | |
| X1 | 1/2" DIM WAS 15 1/8 MAX. | 12/19/66 | | Jc | | |
| X2 | 15 1/8 DIM WAS 12 | 1/12/67 | | Jc | | |
| X3 | ADDED CHANNELS 19 1/8 WAS 12 1/8, 15 1/8 & 18 DIMENSION RELOCATED. | 2-17-67 | | L.A.K. | | |
| | ORIGINAL RELEASE FOR PRODUCTION | 2-27-67 | | L.A.K. | | |



THE TECHNICAL MATERIEL CORPORATION
MAMARONECK
NEW YORK

TF 354



SCHEMATIC - TO BE STAMPED ON XFMR,
IN WHITE.

SPECIFICATIONS:

- WINDING DATA:
- INPUT: 480, 450, 430, 410, 380 VAC, 50/60 CPS, 3PH
 - OUTPUT VOLTAGE: 230 V AC
 - OUTPUT CURRENT RATING: 70 AMP RMS
 - BREAKDOWN TEST VOLTAGE 2000V AC.
 - CASE-OPEN FRAME.
 - FINISH-S115 SMOOTH GREY ENAMEL EXCEPT TERMINAL BOARD & TERMINALS.
 - TERMINAL BOARD. 3/8" THICK.

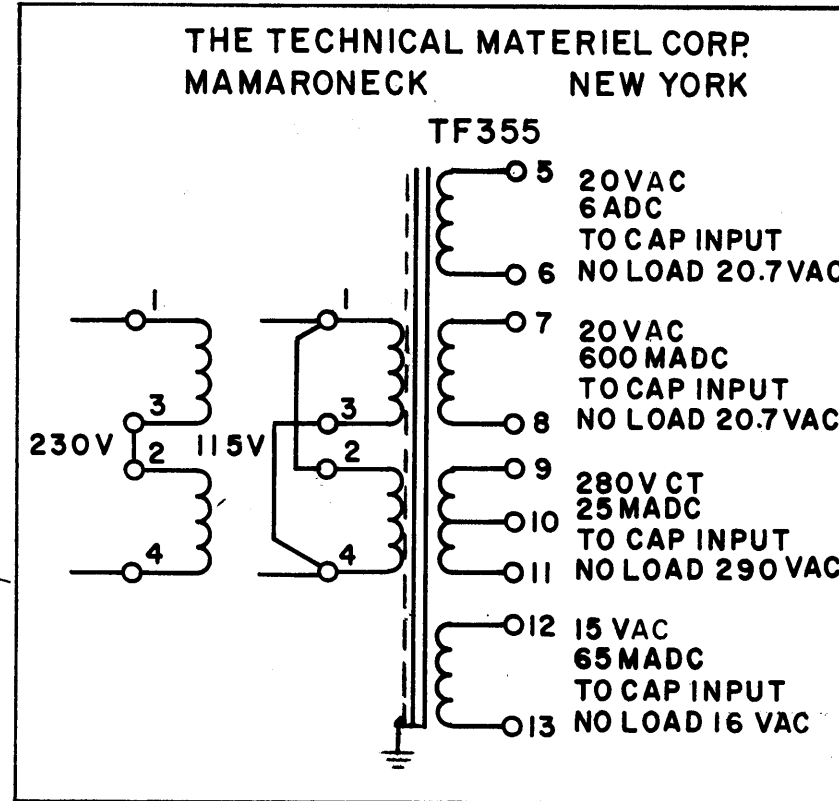
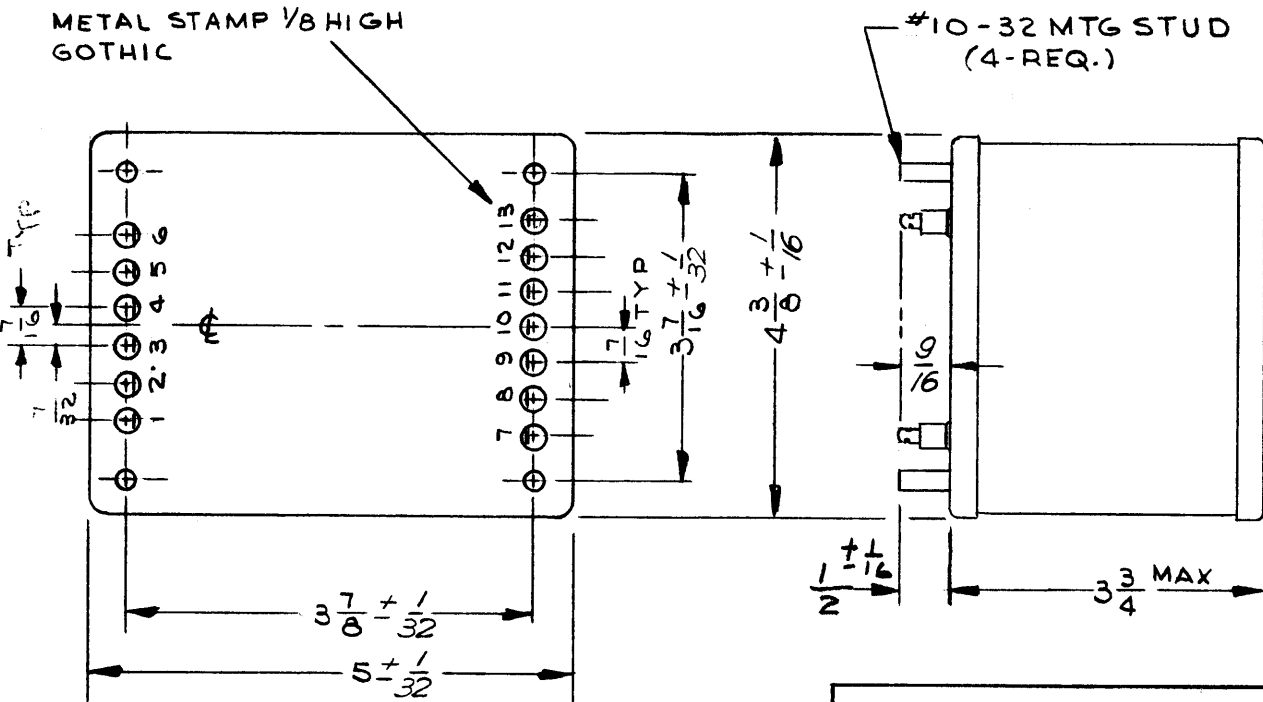
NOTE: MFG-IN ACCORDANCE WITH/MIL-T-27A EXCEPT MIL-7-27A SHALL, NOT APPEAR ON CASE AND QUALIFICATION TESTING IS NOT REQUIRED.

NOTES

| REQD. | ITEM | PART NUMBER | DESCRIPTION | SYMBOL |
|--|------|-------------|------------------|-----------|
| F. BUDETTI | | | LIST OF MATERIAL | |
| | | SEE SPECS | | |
| | | SEE SPECS | | |
| THE TECHNICAL MATERIEL CORP. MAMARONECK, NEW YORK | | | | |
| TITLE: AUTO TRANSFORMER | | | | |
| DRAWN: SRG | | DATE: | FINAL APPROVAL: | DATE: |
| CHECKED: | | DATE: | DATE: 2/21/67 | |
| ELECT. DESK: | | DATE: | DATE: | |
| MECH. DESK: | | DATE: | DATE: | |
| SHEET: TF 354 | | | | REV. LTR. |

| | | |
|---|---------------|------------------|
| QTY./UNIT | MODEL USED ON | ASBY. NO. |
| SCALE: NONE | CODE: C | S401-30 (7689-2) |
| THE CONTENTS OF THIS DRAWING ARE THE EXCLUSIVE PROPERTY OF THE TECHNICAL MATERIEL CORP. ITS UNAUTHORIZED USE OR REPRODUCTION IN WHOLE OR IN PART IS STRICTLY FORBIDDEN. | | |

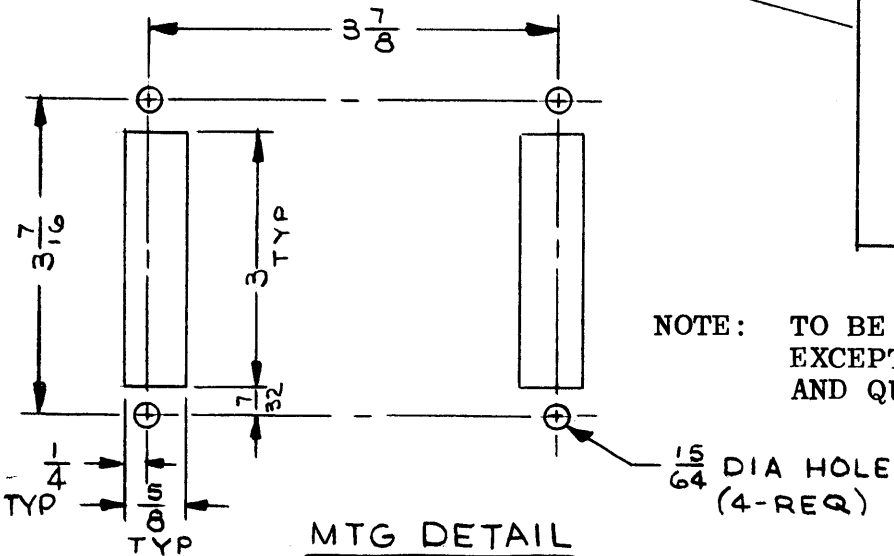
METAL STAMP 1/8 HIGH
GOTHIC



THE TECHNICAL MATERIEL CORP.
MAMARONECK NEW YORK

TF355

NOTE: TO BE MANUFACTURED IN ACCORDANCE WITH MIL-T-27,
EXCEPT THAT MIL-T-27 SHALL NOT APPEAR ON CASE
AND QUALIFICATION TESTING IS NOT REQUIRED



NOTES

| | | |
|---|---------------|----------------|
| RTIH | | ASS'Y. NO. |
| Q'TY./UNIT | MODEL USED ON | |
| SCALE | CODE | S401-30 (7551) |
| THE CONTENTS OF THIS DRAWING ARE THE EXCLUSIVE PROPERTY OF THE TECHNICAL MATERIEL CORP. ITS UNAUTHORIZED USE OR REPRODUCTION IN WHOLE OR IN PART IS STRICTLY FORBIDDEN. | | |

TF355

REVISIONS

| SYM | DESCRIPTION | DATE | E.M.N. NO. | DRAFT | CHKD | APPD |
|----------------|--|----------|------------|-------|------|------|
| X | EXP. RELEASE | 1/9/66 | | JL | | |
| X ₁ | NO LOAD VOL. WAS 15.5, S401 NO. WAS (7552) | 2/16/67 | X | RME | JCB | |
| X ₂ | UPDATED | 11/13/68 | | K.H. | | |
| Ø | ORIGINAL RELEASE FOR PRODUCTION | 11/27/68 | | R.G. | | |

SPECIFICATIONS

TRANSFORMER, POWER: STEP-DOWN AND STEP-UP

PRIMARY WINDING:

VOLTAGE: 115/230 V
FREQUENCY: 50/60 Hz
PHASE: 1

SECONDARY WINDING:

FULL LOAD:
VOLTAGE: TERM(5-6), (7-8), 20 VAC, (9-11) 280 VCT, (12-13) 15 VAC
CURRENT: TERM(5-6) 6 ADC, (7-8) 600 MADC, (9-10) 25 MADC, (12-13) 65 MADC
NO LOAD:
VOLTAGE: TERM(5-6) 20.7 VAC, (7-8) 20.7 VAC, (9-10-11) 290 VAC (12-13) 16 VAC.

ELECTRO-STATIC SHIELDING TO BE PROVIDED

BREAKDOWN VOLTAGE: 1000 VRMS

CASE DATA:

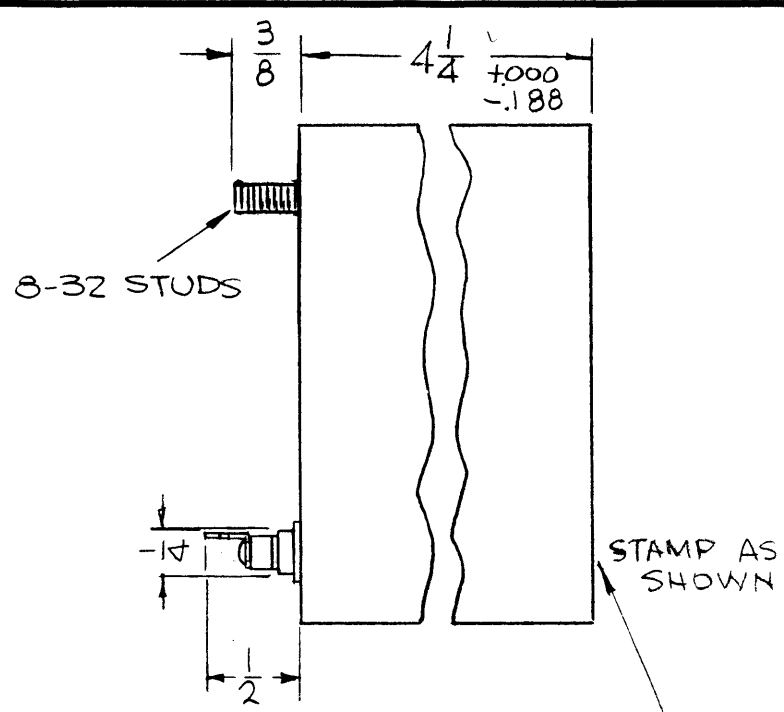
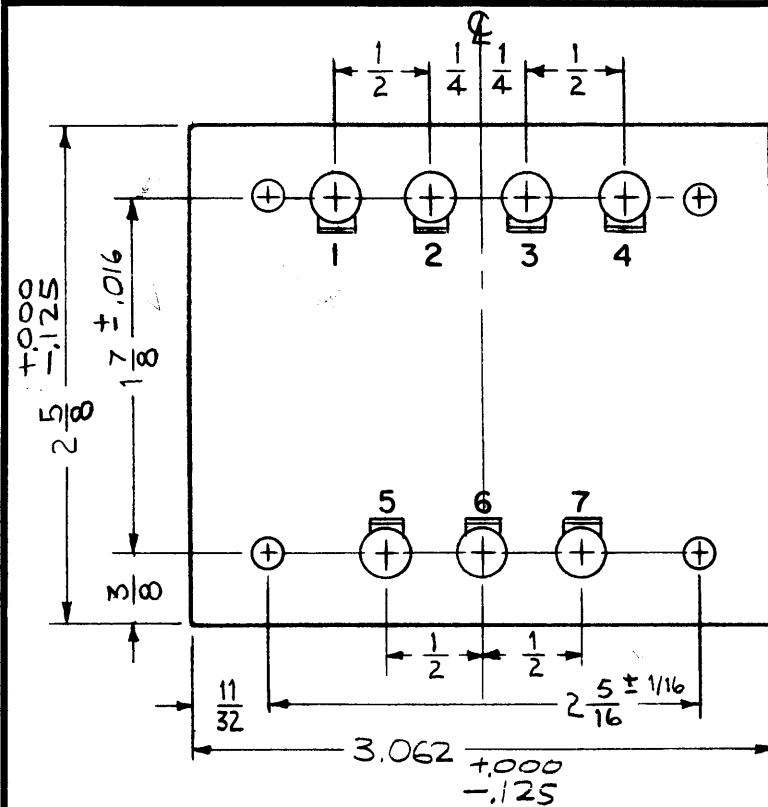
HERMETICALLY SEALED: NO
CASE TYPE: STEEL CASE
CASE DIMENSIONS: SHOWN PICTORIALY

MOUNTING DATA: SHOWN PICTORIALY

TERMINAL DATA:

NO OF TERM: 13
TYPE: SOLDER TYPE INSULATED
FINISH: SMOOTH GRAY ENAMEL (TMC SPEC S115) EXCEPT TERM END
MARKING: ALL TERMINALS TO BE METAL STAMPED (METAL CASES ONLY)
MARKING TO BE PER TMC SPECS S566 AND S727

| REQ'D. | ITEM | PART NUMBER | DESCRIPTION | SYMBOL |
|---|------|-------------|--|---|
| EATON LIST OF MATERIAL | | | | |
| MATERIAL | | | THE TECHNICAL MATERIEL CORP. MAMARONECK, NEW YORK | |
| FINISH | | | TRANSFORMER, POWER STEP-DOWN, STEP-UP | |
| UNLESS OTHERWISE SPECIFIED DIMENSIONS ARE IN INCHES AND INCLUDE CHEMICALLY APPLIED OR PLATED FINISHES | | | DRAWN J. LESHINSKI CHECKED JCB | DATE 10/17/66 DATE 3/16/67 DATE 11-27-68 |
| DECIMALS .X ± .05 .XX ± .01 .XXX ± .005 | | | FINISH APPROVAL J. DiMarco DATE 11/27/68 | |
| FRACTIONS ± 1/64 ANGLES ± 0° 30' | | | ELECT. DEPT. MECH. DEPT. | |
| TOLERANCES | | | SHEET TF355 | |
| | | | REV. LTR. | |



TF357

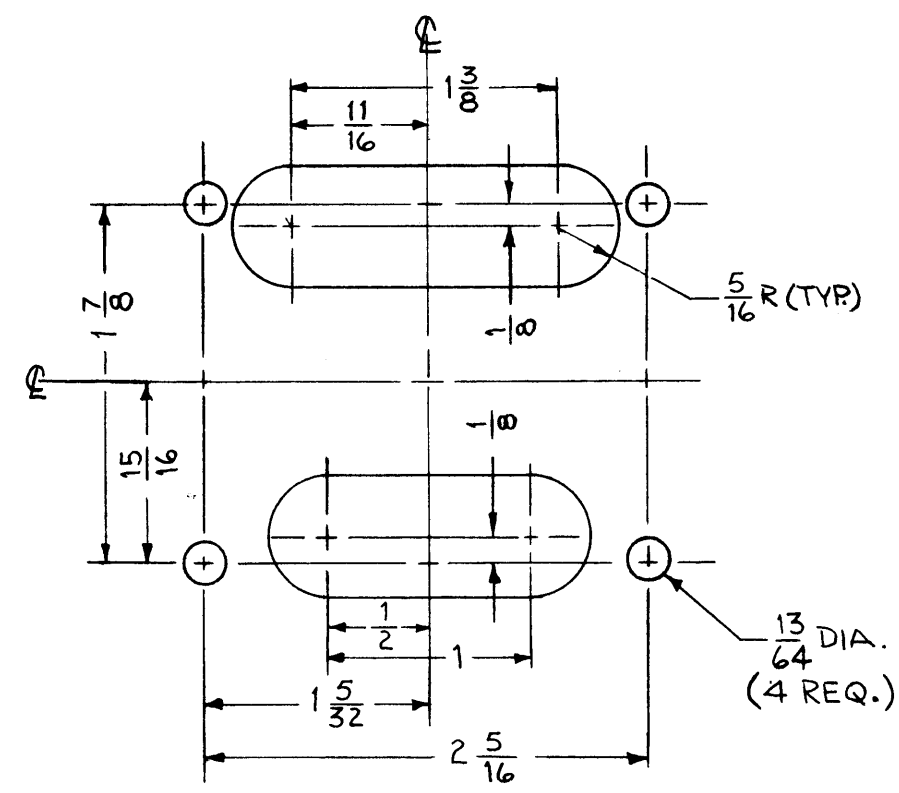
| REVISIONS | | | | | |
|-----------|---------------------------------|----------|------------|-------|-----------|
| SYM | DESCRIPTION | DATE | E.M.N. NO. | DRAFT | CHKD APPD |
| X | EXP. RELEASE | 12-21-66 | | | |
| Ø | ORIGINAL RELEASE FOR PRODUCTION | 1/17/67 | Ø | CV | |

SPECIFICATIONS

PRIMARY WINDING:
 VOLTAGE: 115/230
 FREQUENCY: 50/60 ~
 PHASE: 1

SECONDARY WINDING:
FULL LOAD:
 VOLTAGE: 5-7, 28 VDC CT
 CURRENT DC: 2.25 AMPS
NO LOAD:
 VOLTAGE RMS: 25 VAC
 CURRENT: 2.25 AMPS
 DC SPECS: BRIDGE RECTIFIER CAP INPUT

BREAKDOWN VOLTAGE: 1000 VDC
CASE DATA:
 HERMETICALLY SEALED:
 CASE TYPE: STEEL CASE HA
 CASE DIMENSIONS: (SHOWN PICTORIALY)
TERMINAL DATA:
 NO OF TERM: 7
 TYPE: STANDOFF SOLDER TERM
 TYPE OPTIONAL
FINISH: SMOOTH GRAY ENAMEL (TMC SPEC S115) EXCEPT TERM END
MARKING:
 ALL TERMINALS TO BE METAL STAMPED (METAL CASES ONLY)
 SCHEMATIC AND TMC IDENTIFICATION TO BE MARKED ON TOP/AS SHOWN
 MARKING TO BE PER TMC SPECS S566 AND S727



THE TECHNICAL MATERIEL CORPORATION
 MAMARONECK NEW YORK

TF357

MOUNTING DETAIL

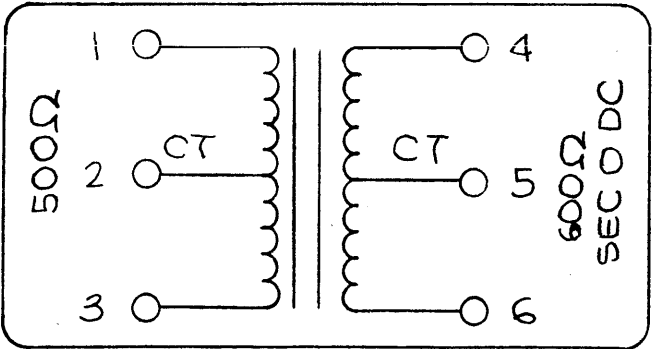
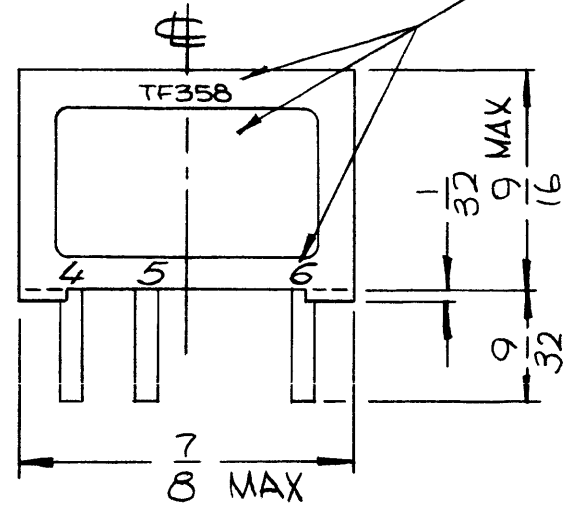
NOTES

| | | |
|---|---------------|-----------------|
| 1 | KMCI-1 | |
| Q'TY./UNIT | MODEL USED ON | ASS'Y. NO. |
| SCALE 1:1 | CODE C | S401-30 (7636B) |
| THE CONTENTS OF THIS DRAWING ARE THE EXCLUSIVE PROPERTY OF THE TECHNICAL MATERIEL CORP. ITS UNAUTHORIZED USE OR REPRODUCTION IN WHOLE OR IN PART IS STRICTLY FORBIDDEN. | | |

| REQ'D. | ITEM | PART NUMBER | DESCRIPTION | SYMBOL |
|---|------|---|-------------|----------------|
| L. BUTLER LIST OF MATERIAL | | | | |
| MATERIAL | | THE TECHNICAL MATERIEL CORP. MAMARONECK, NEW YORK | | |
| FINISH | | TITLE XFMR, POWER STEP DOWN | | |
| UNLESS OTHERWISE SPECIFIED DIMENSIONS ARE IN INCHES AND INCLUDE CHEMICALLY APPLIED OR PLATED FINISHES | | DRAWN | DATE | FINAL APPROVAL |
| | | CHECKED | DATE | |
| DECIMALS .X ± .05 .XX ± .01 .XXX ± .005 | | FRACTIONS ± 1/64 ANGLES ± 0° 30' | | TOLERANCES |
| ELECT. DES | | DATE | TF357 | |
| MECH. DES | | DATE | Ø | |
| | | 1-16-67 | SHEET | |
| | | 1-17-67 | REV. LTR. | |

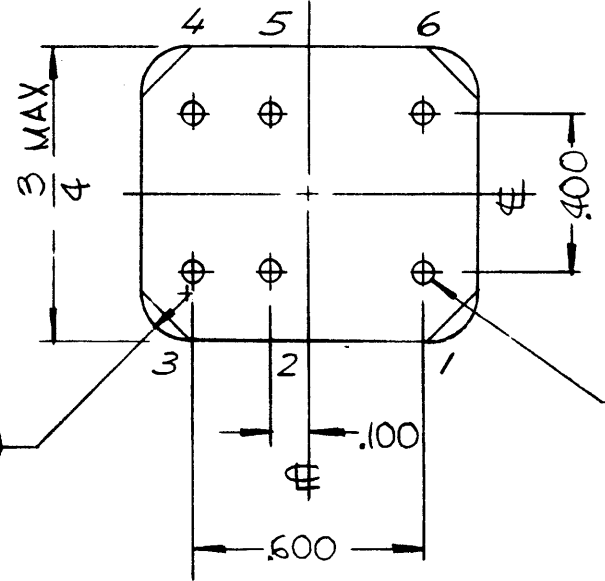
| REVISIONS | | | | | | |
|-----------|-----|------------------------|----------|----------|-------|-----------|
| ZONE | LTR | DESCRIPTION | DATE | E.M.N.NO | DRAFT | CHKD APPD |
| | X | EXPERIMENTAL REL | 1/5/67 | X | WLD | JEB JLD |
| | Ø | ORIG. RELEASE FOR PROD | 10-21-68 | | R.G. | JLD |
| | A | TERMINALS RENLUMB. | 11/3/69 | 19631 | KH | KD OP |

LETTERING & MARKING TO BE LOCATED AS SHOWN PER TMC SPEC 5727, NO ADDITIONAL MARKING OTHER THAN SHOWN, TO BE ADDED TO XFMR.



PERFORMANCE CHARACTERISTICS

1. PRIMARY IMPEDANCE: 500 CT OHMS
2. SECONDARY IMPEDANCE: 600 CT OHMS
3. MAX PRI UNBALANCED DC CURRENT: 10 MA
4. FREQUENCY RESPONSE: 300~50 KC ±2 dB
5. MAX LEVEL: +20 DBM (100 MW)
6. POLARITY: TERMS 1 & 4 HAVE SAME POLARITY
7. WORKING VOLTAGE: 175 PEAK
8. FINISH: TMC GREY AS PER S115
9. MARKING: ALL TERMINALS TO BE MARKED AS INDICATED
10. PER MIL-T-27A GRADE 5, CLASS R, LIFE EXPECTANCY X, EXCEPT THAT MIL-T-27 SHALL NOT APPEAR ON CASE & QUALIFICATION TESTING IS NOT REQUIRED



.040 DIA PINS (6 REQ)

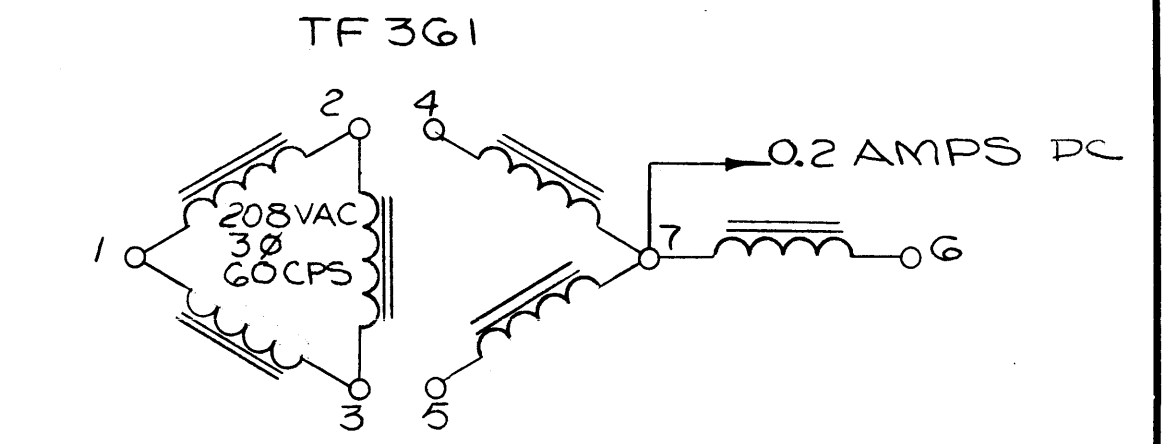
| | | |
|---|---------------|------------------|
| 1 | MSAR-4 | |
| QTY / UNIT | MODEL USED ON | ASS'Y NO. |
| APPLICATION | | |
| DO NOT SCALE | CODE | S401-29(SSO-19P) |
| NOTICE TO PERSONS RECEIVING THIS DRAWING THE TECHNICAL MATERIEL CORPORATION claims proprietary right in the material disclosed hereon. This drawing is issued in confidence for engineering information only and may not be reproduced or used to manufacture anything shown hereon without permission from THE TECHNICAL MATERIEL CORPORATION to the user. This drawing is loaned for mutual assistance and is subject to recall at any time. | | |

| | | | |
|---|--|----------------|------|
| UNLESS OTHERWISE SPECIFIED DIMENSIONS ARE IN INCHES AND INCLUDE CHEMICALLY APPLIED OR PLATED FINISHES | | FINAL APPROVAL | DATE |
| DECIMALS .X ± .05 .XX ± .01 .XXX ± .005 | | MECH. DES. | DATE |
| FRACTIONS 1/64 TOLS. ANGLES 0° 30' | | | DATE |
| MATERIAL | | ELECT. DES. | DATE |
| FINISH | | CHECKED | DATE |
| | | DRAWN | DATE |

| | | | |
|--|-----------------|----------|-------|
| THE TECHNICAL MATERIEL CORP. MAMARONECK, NEW YORK | | | |
| TRANSFORMER, AUDIO, OUTPUT MATCHING | | | |
| SIZE | CODE IDENT. NO. | DWG NO. | ISSUE |
| B | 82679 | TF358 | A |
| SCALE | | SHEET OF | |

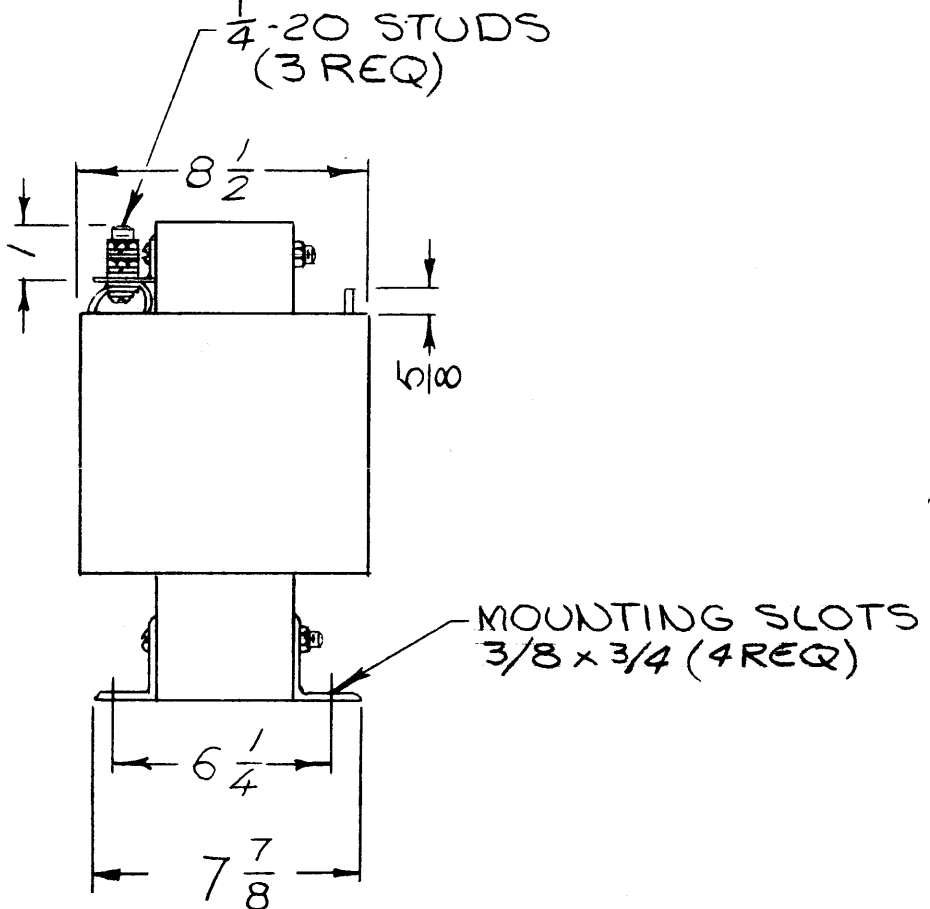
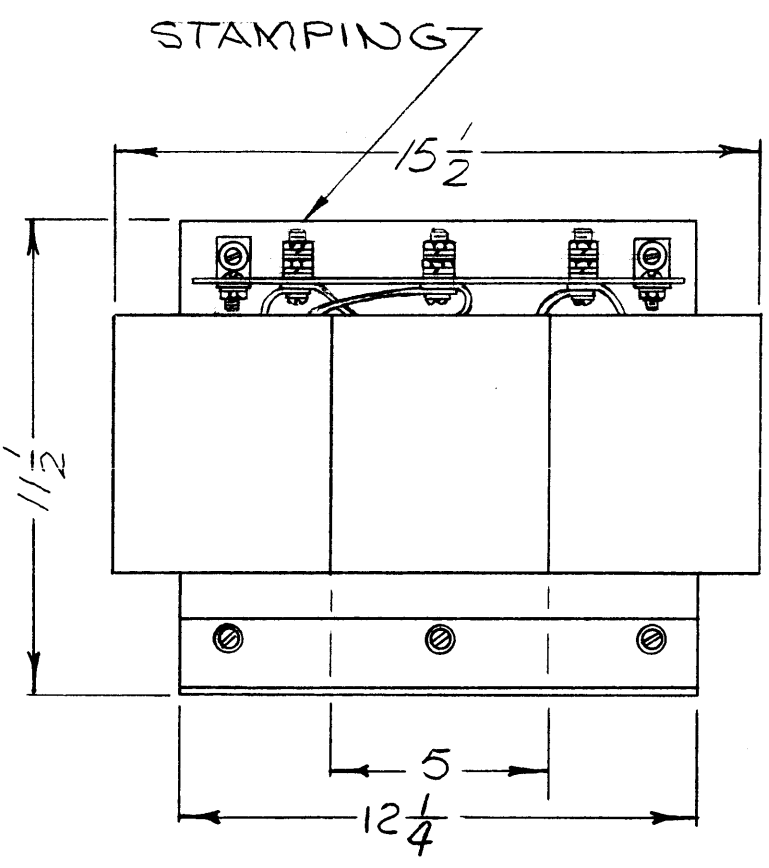
| REVISIONS | | | | | | |
|-----------|-----|-------------------------|---------|----------|-------|-----------|
| ZONE | LTR | DESCRIPTION | DATE | E.M.N.NO | DRAFT | CHKD APPD |
| | X | EXP. RELEASE | 2-12-68 | | | |
| | Ø | ORIG. RELEASE FOR PROD. | 5-29-68 | Ø | R.G. | |
| | A | DIM. CHANGES | 7/14/69 | 19503 | GE | TKD F89 |

THE TECHNICAL MATERIEL CORPORATION
MAMARONECK NEW YORK



TO BE STAMPED ON XFMR IN WHITE

NOTES:
MFG. IN ACCORDANCE WITH/MIL-27A
EXCEPT MIL-27A SHALL NOT APPEAR ON
CASE & QUALIFICATION TESTING IS NOT
REQUIRED



SPECIFICATIONS:
ELECTRICAL
VOLTAGE-(PRI, 208VAC)(7500VDC)
FREQUENCY - 60CPS
PHASE - 3Ø
INSULATION TEST VOLTAGE
CURRENT - 1.5 AMPS, NEUTRAL .2 AMPS

MECHANICAL
CASE - OPEN FRAME
FINISH - S115 SMOOTH GRAY
ENAM. EXCEPT TERMINALS
DIMENSIONS - SEE PICTORIAL
TERMINALS - 1/4-20 THREADS
TOL. RANGE - 1/32 UNLESS
OTHERWISE SPECIFIED

STAMPING
ACCORDING TO TMC SPEC S727
TERMINALS - TO BE STAMPED
WHITE
SCHEMATIC - TO BE PLACED AS
SHOWN
BLACK GOTHIC LETTERING &
LIVE WORK

| REQ'D | ITEM | PART NUMBER | DESCRIPTION | SYM. |
|--|-----------------|-------------|-------------|------|
| BUDETTI LIST OF MATERIAL | | | | |
| THE TECHNICAL MATERIEL CORP. MAMARONECK, NEW YORK | | | | |
| TRANSFORMER, POWER STEP-UP | | | | |
| SIZE | CODE IDENT. NO. | DWG NO. | ISSUE | |
| B | 82679 | TF 361 | A | |
| SCALE-NONE | | | SHEET | OF |

| QTY / UNIT | MODEL USED ON | ASS'Y NO. |
|-------------|---------------|---------------|
| 1 | GPT-10KRL | |
| APPLICATION | | |
| | CODE | S401-3d(8070) |

| DECIMALS | FRACTIONS | MECH. DES. | DATE |
|-------------|--------------|--------------------|---------|
| .X ± .05 | 1/64 | <i>[Signature]</i> | 5-29-68 |
| .XX ± .01 | TOLS. ANGLES | <i>[Signature]</i> | 5-7-68 |
| .XXX ± .005 | 0° - 30' | <i>[Signature]</i> | 5-29-68 |
| MATERIAL | | DRAWN | DATE |
| AS NOTED | | <i>[Signature]</i> | 12-68 |
| FINISH | | | |
| AS NOTED | | | |

UNLESS OTHERWISE SPECIFIED
DIMENSIONS ARE IN INCHES
AND INCLUDE CHEMICALLY APPLIED
OR PLATED FINISHES

NOTICE TO PERSONS RECEIVING THIS DRAWING
THE TECHNICAL MATERIEL CORPORATION claims proprietary right in the material
disclosed hereon. This drawing is issued in confidence for engineering information only
and may not be reproduced or used to manufacture anything shown hereon without
permission from THE TECHNICAL MATERIEL CORPORATION to the user. This drawing is
loaned for mutual assistance and is subject to recall at any time.

5

4

3

2

1

REVISIONS

| ZONE | LTR | DESCRIPTION | DATE | E.M.N.NO | DRAFT | CHKD | APPD |
|------|-----|------------------------|----------|----------|-------|--------------------|--------------------|
| | X | EXP. RELEASE | 9-15-67 | | H.G. | <i>[Signature]</i> | <i>[Signature]</i> |
| | Ø | ORIG. RELEASE FOR PROD | 10-21-68 | | R.G. | | <i>[Signature]</i> |
| | A | TERM 5 & 6 WAS 37.8V | 1/28/70 | 19739 | CV | | <i>[Signature]</i> |

SPECIFICATIONS

ELECTRICAL

PRIMARY WINDING

VOLTAGE: TERMINALS 1,2,3,4 115/230 V

FREQUENCY: 50/60 CPS

INSULATION TEST VOLTAGE: 1000 VOLTS

SECONDARY WINDING

VOLTAGE:

| TERMINALS | VOLTAGE |
|-----------|---------|
| 5,6 | 41.2 V |
| 7,8 | 14.8 V |
| 9,10 | 240 V |
| 10,11 | 28.4 V |

MECHANICAL

CASE: POTTED FRAME

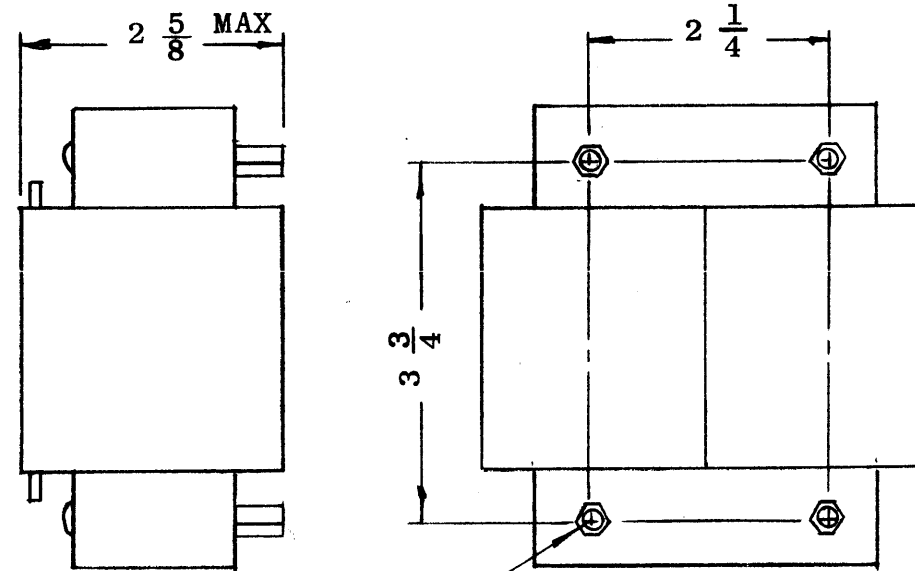
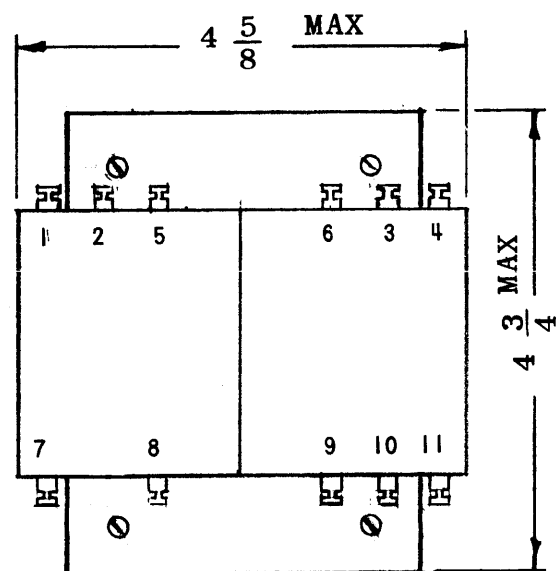
FINISH: BLACK MATT

DIMENSIONS: SHOWN PICTORIALLY

TERMINALS: SOLDER TYPE

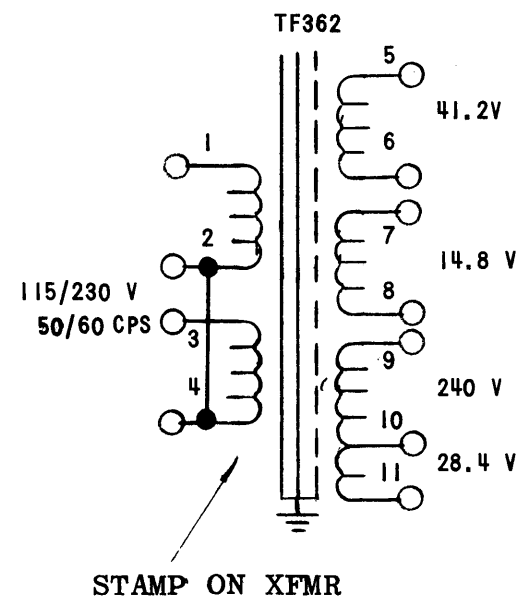
STAMPING: ACCORDING TO TMC SPEC S727 WHITE GOTHIC LETTERING AND LINE WORK

NOTE: MANUFACTURED IN ACCORDANCE WITH MIL-SPEC T-27-A EXCEPT THAT MIL SPEC T-27-A SHALL NOT APPEAR ON CASE AND QUALIFICATION TESTING NOT REQUIRED.



8-32 THREADS (4)

THE TECHNICAL MATERIEL CORP.
MAMARONECK NEW YORK



| REQ'D | ITEM | PART NUMBER | DESCRIPTION | SYM. |
|-------|----------|-------------|------------------|------|
| | R. HOGAN | | LIST OF MATERIAL | |

THE TECHNICAL MATERIEL CORP.
MAMARONECK, NEW YORK

XFMR, POWER STEP UP, STEP DOWN

SIZE B CODE IDENT. NO. 82679 DWG NO. TF 362 ISSUE A

SCALE 1:2 SHEET OF

| QTY / UNIT | MODEL USED ON | ASS'Y NO. |
|------------|---------------|-----------|
| 1 | HFRR-4 | |

APPLICATION

CODE C S401-30 (BTC#7872)

NOTICE TO PERSONS RECEIVING THIS DRAWING
THE TECHNICAL MATERIEL CORPORATION claims proprietary right in the material disclosed hereon. This drawing is issued in confidence for engineering information only and may not be reproduced or used to manufacture anything shown hereon without permission from THE TECHNICAL MATERIEL CORPORATION to the user. This drawing is loaned for mutual assistance and is subject to recall at any time.

UNLESS OTHERWISE SPECIFIED DIMENSIONS ARE IN INCHES AND INCLUDE CHEMICALLY APPLIED OR PLATED FINISHES

| DECIMALS | FRACTIONS |
|-------------|--------------|
| .X ± .05 | 1/64 |
| .XX ± .01 | TOLS. ANGLES |
| .XXX ± .005 | 0° -30' |

MATERIAL

FINISH

FINAL APPROVAL

MECH. DES.

ELECT. DES.

CHECKED

DRAWN

H.G.

DATE

DATE

DATE

DATE

DATE

DATE

| REVISIONS | | | | | | |
|-----------|-----|------------------------|----------|----------|-------|--------------------|
| ZONE | LTR | DESCRIPTION | DATE | E.M.N.NO | DRAFT | CHKD APPD |
| | X | EXP. RELEASE | 9-15-67 | | H.G. | <i>[Signature]</i> |
| | Ø | ORIG. RELEASE FOR PROD | 10-21-68 | | R.G. | <i>[Signature]</i> |

SPECIFICATIONS

ELECTRICAL:

PRIMARY WINDING

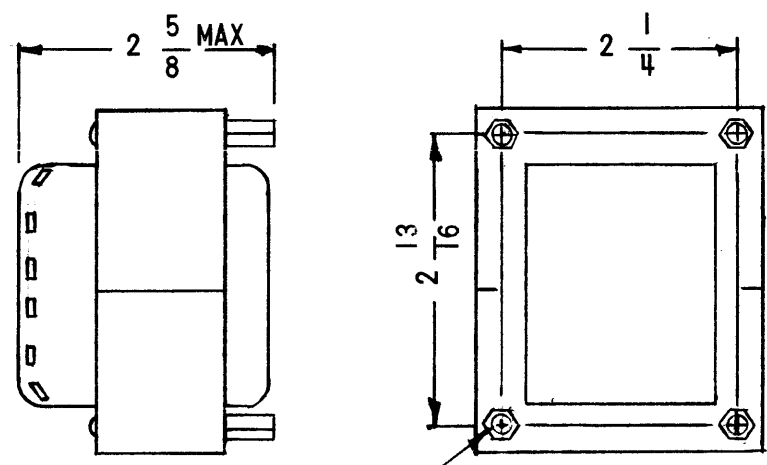
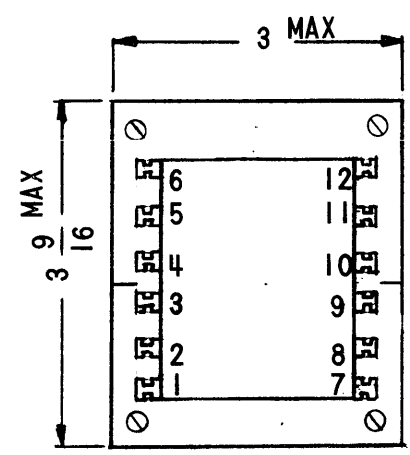
VOLTAGE: TERMINALS 1,2,3,4 115/230 V
 FREQUENCY: 50/60 CPS
 PHASE: I
 INSULATION TEST VOLTAGE: 1000 VDC

SECONDARY WINDING

VOLTAGE:
 TERMINALS 5,6 38.0 V
 7,8 22.8 V
 9,10 14.5 V
 11,12 28.2 V

MECHANICAL

CASE: POTTED FRAME
 FINISH: BLACK MATT
 DIMENSIONS: SHOWN PICTORIALLY
 TERMINALS: SOLDER TYPE
 STAMPING: ACCORDING TO TMC SPEC S727 WHITE GOTHIC LETTERING AND LINE WORK.

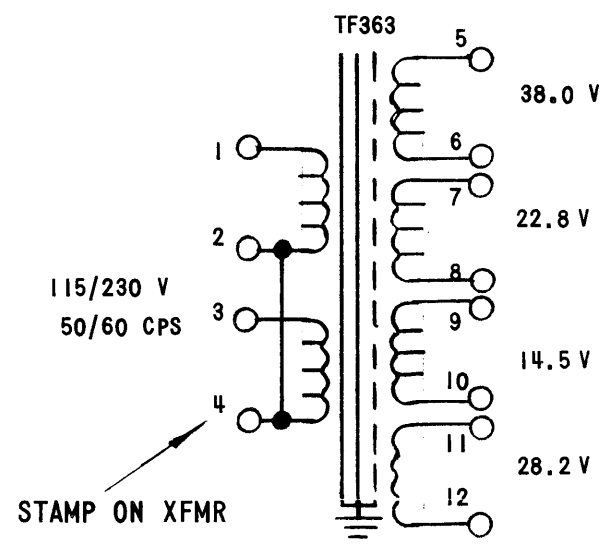


8-32 THDS (4)

NOTE:

MANUFACTURED IN ACCORDANCE WITH MIL-SPEC T-27-A EXCEPT THAT MIL-SPEC T-27-A SHALL NOT APPEAR ON CASE AND QUALIFICATION TESTING NOT REQUIRED.

THE TECHNICAL MATERIEL CORP.
 MAMARONECK NEW YORK



| | | |
|-------------|---------------|--------------------|
| I | MSAR-4 | |
| QTY / UNIT | MODEL USED ON | ASS'Y NO. |
| APPLICATION | | |
| | CODE C | S401-40 (BTC#7871) |

NOTICE TO PERSONS RECEIVING THIS DRAWING
 THE TECHNICAL MATERIEL CORPORATION claims proprietary right in the material disclosed hereon. This drawing is issued in confidence for engineering information only and may not be reproduced or used to manufacture anything shown hereon without permission from THE TECHNICAL MATERIEL CORPORATION to the user. This drawing is loaned for mutual assistance and is subject to recall at any time.

UNLESS OTHERWISE SPECIFIED DIMENSIONS ARE IN INCHES AND INCLUDE CHEMICALLY APPLIED OR PLATED FINISHES

| | |
|-------------|--------------|
| DECIMALS | FRACTIONS |
| .X ± .05 | 1/64 |
| .XX ± .01 | TOLS. ANGLES |
| .XXX ± .005 | 0° -30' |

MATERIAL

FINISH

| REQ'D | ITEM | PART NUMBER | DESCRIPTION | SYM. |
|-------|------|-------------|-------------|------|
|-------|------|-------------|-------------|------|

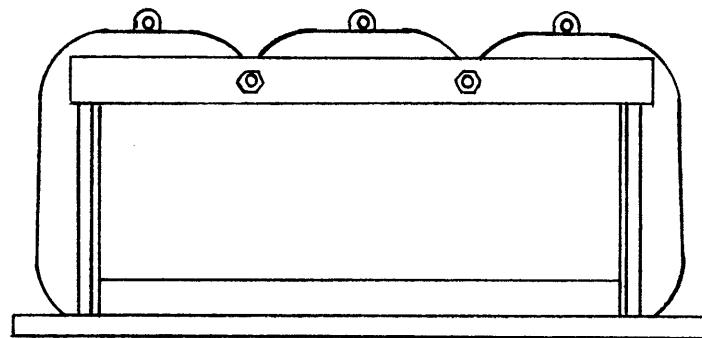
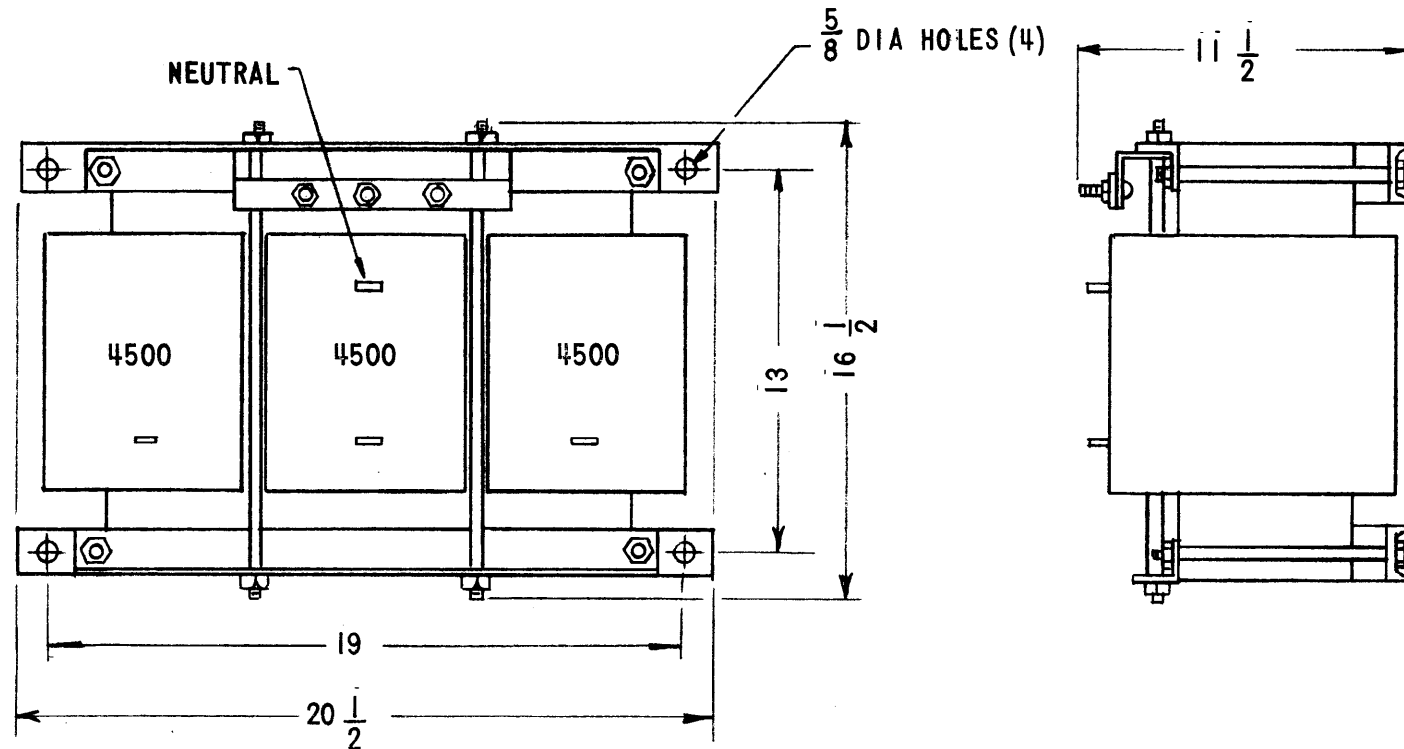
R. HOGAN LIST OF MATERIAL

| | | |
|-------------|---------------|--|
| APPROVAL | DATE | THE TECHNICAL MATERIEL CORP. MAMARONECK, NEW YORK XFMR, POWER STEP UP, STEP DOWN |
| MECH. DES. | DATE | |
| ELECT. DES. | DATE | |
| CHECKED | DATE 10/17/68 | |
| DRAWN | H.G. | DATE |

| | | | |
|------|-----------------|---------|--------------------|
| SIZE | CODE IDENT. NO. | DWG NO. | ISSUE |
| B | 82679 | TF 363 | <i>[Signature]</i> |

SCALE 1:2 SHEET OF

| REVISIONS | | | | | | |
|-----------|-----|-------------------------|---------|----------|-------|--------------------|
| ZONE | LTR | DESCRIPTION | DATE | E.M.N.NO | DRAFT | CHKD APPD |
| | X | EXPERIMENTAL RELEASE | 3/29/68 | | C.V. | <i>[Signature]</i> |
| | Ø | ORIG. RELEASE FOR PROD. | 5.10.68 | Ø | R.G. | <i>[Signature]</i> |



SPECIFICATIONS

ELECTRICAL:

PRIMARY: 208 VAC 3Ø, 60 CPS
 INSULATION TEST VOLTAGE: 15 KV

SECONDARY: 10 K VDC @ 4A FROM 3Ø FWB

MECHANICAL:

CASE: OPEN FRAME
 FINISH: TMC SPEC S115 SMOOTH GRAY ENAMEL
 DIMENSIONS: SHOWN PICTORIALY

TERMINALS:

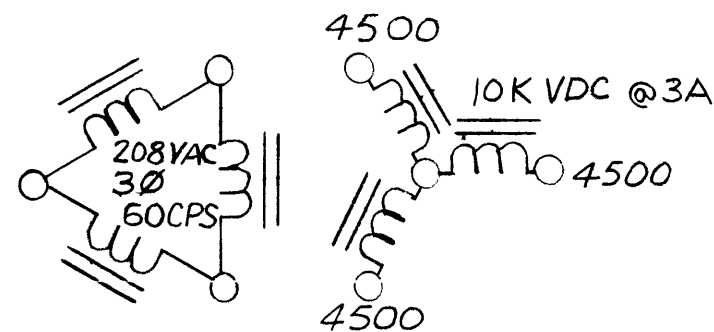
PRIMARY: LUGS
 SECONDARY: SOLDER TERM

MARKING:

- A. SCHEMATIC AND TMC IDENTIFICATION TO BE MARKED ON TOP OF TRANSFORMER.
- B. MARKING TO BE AS PER TMC S727.
- C. LETTER AND NUMERALS TO BE GOTHIC ALL MARKING TO BE IN BLACK.

NOTE: MANUFACTURED IN ACCORDANCE WITH MIL-SPEC T-27-A EXCEPT THAT MIL-SPEC T-27-A SHALL NOT APPEAR ON CASE AND QUALIFICATION TESTING NOT REQUIRED.

TO BE MARKED ON TOP OF TRANSFORMER
 THE TECHNICAL MATERIEL CORPORATION
 MAMARONECK NEW YORK
 TF 364



| | | |
|-------------|---------------|---------------|
| 1 | BCT-10KA | |
| QTY / UNIT | MODEL USED ON | ASS'Y NO. |
| APPLICATION | | |
| | CODE C | S401-30(7894) |

NOTICE TO PERSONS RECEIVING THIS DRAWING
 THE TECHNICAL MATERIEL CORPORATION claims proprietary right in the material disclosed hereon. This drawing is issued in confidence for engineering information only and may not be reproduced or used to manufacture anything shown hereon without permission from THE TECHNICAL MATERIEL CORPORATION to the user. This drawing is loaned for mutual assistance and is subject to recall at any time.

UNLESS OTHERWISE SPECIFIED DIMENSIONS ARE IN INCHES AND INCLUDE CHEMICALLY APPLIED OR PLATED FINISHES

| | |
|-------------|--------------|
| DECIMALS | FRACTIONS |
| .X ± .05 | 1/64 |
| .XX ± .01 | TOLS. ANGLES |
| .XXX ± .005 | 0° -30' |

MATERIAL
 FINISH

| REQ'D | ITEM | PART NUMBER | DESCRIPTION | SYM. |
|--|-----------------|-------------|----------------------------|---------|
| F. BUDETTI LIST OF MATERIAL | | | | |
| THE TECHNICAL MATERIEL CORP. MAMARONECK, NEW YORK | | | TRANSFORMER, POWER STEP-UP | |
| SIZE | CODE IDENT. NO. | DWG NO. | TF 364 | ISSUE Ø |
| B | 82679 | | | |
| SCALE | SHEET | | OF | |

5

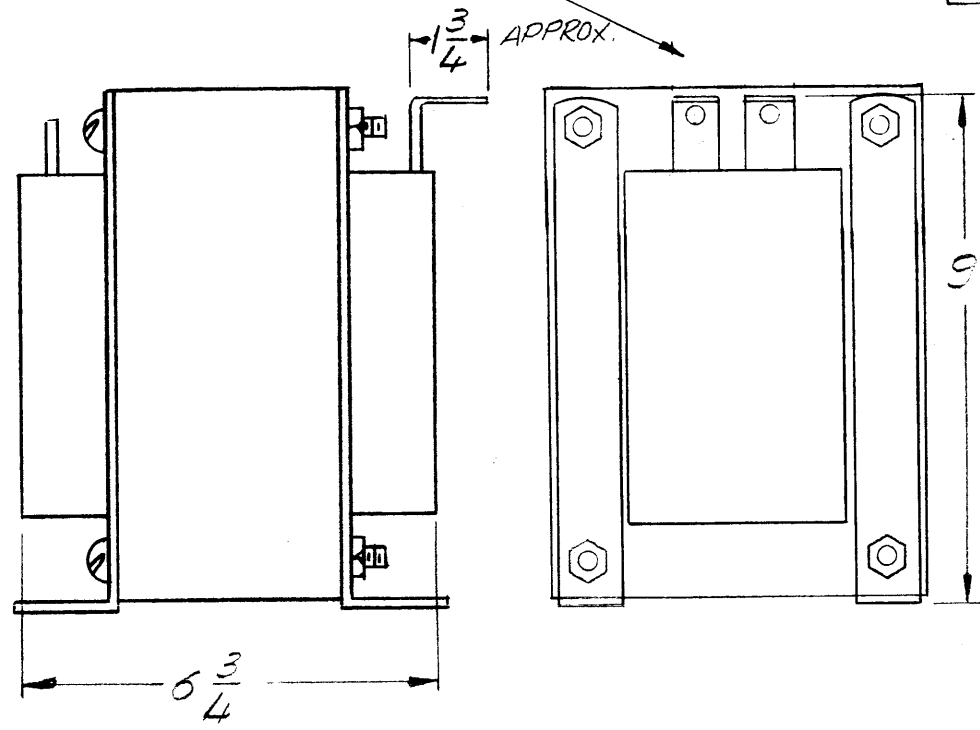
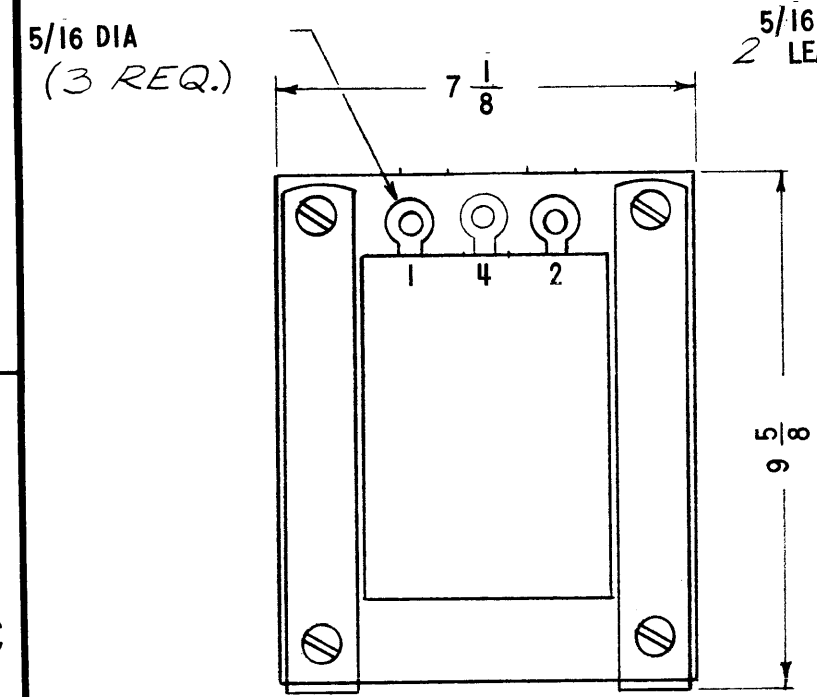
4

3

2

1

| REVISIONS | | | | | | |
|-----------|-----|-------------------------|---------|----------|-------|-----------|
| ZONE | LTR | DESCRIPTION | DATE | E.M.N.NO | DRAFT | CHKD APPD |
| | X | EXPERIMENTAL RELEASE | 3/29/68 | | C.V. | |
| | Ø | ORKS. RELEASE FOR PROD. | 5-8-68 | Ø | R.G. | |
| | Δ | REV. E UPDATED | 5-21-69 | 19438 | GE | FB |
| | B | REVISED LEADS | 4/7/71 | 20318 | GE | |

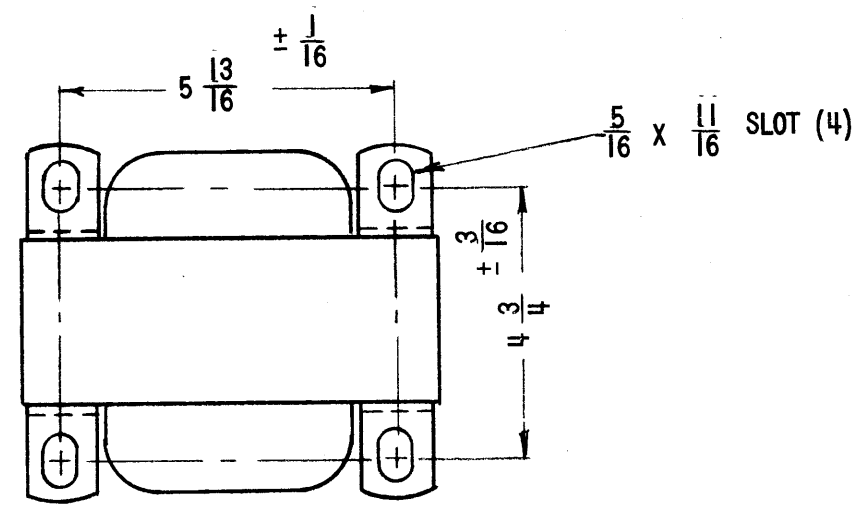


SPECIFICATIONS

ELECTRICAL:
 PRIMARY: 208 VAC Ø1, 60 CPS
 INSULATION TEST VOLTAGE: 1000 VDC
 SECONDARY: 10 VAC 300 A CENTER TAP

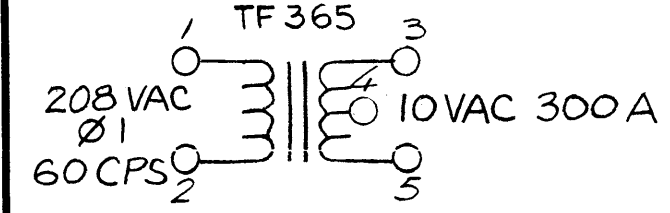
MECHANICAL:
 CASE: OPEN FRAME
 FINISH: TMC SPEC S115 SMOOTH GRAY ENAMEL
 DIMENSIONS: SHOWN PICTORIALLY
 TERMINALS: LUGS (OFF OF COIL)

MARKING:
 A. SCHEMATIC AND TMC IDENTIFICATION TO BE PLACED ON TRANSFORMER.
 B. MARKING TO BE AS PER TMC S727.
 C. LETTER AND NUMERALS TO BE GOTHIC ALL MARKING TO BE BLACK.
 NOTE: MANUFACTURED IN ACCORDANCE WITH MIL-SPEC T-27-A EXCEPT THAT MIL-SPEC T-27-A SHALL NOT APPEAR ON CASE AND QUALIFICATION TESTING NOT REQUIRED.



TO BE PLACED ON TOP OF TRANSFORMER

THE TECHNICAL MATERIEL CORPORATION
MAMARONECK
NEW YORK



| | | |
|------------|---------------|-----------|
| 1 | BCT-10KA | 4X 681 |
| QTY / UNIT | MODEL USED ON | ASS'Y NO. |

APPLICATION

| | |
|------|---------------|
| CODE | S401-30(7895) |
|------|---------------|

NOTICE TO PERSONS RECEIVING THIS DRAWING
 THE TECHNICAL MATERIEL CORPORATION claims proprietary right in the material disclosed hereon. This drawing is issued in confidence for engineering information only and may not be reproduced or used to manufacture anything shown hereon without permission from THE TECHNICAL MATERIEL CORPORATION to the user. This drawing is loaned for mutual assistance and is subject to recall at any time.

UNLESS OTHERWISE SPECIFIED DIMENSIONS ARE IN INCHES AND INCLUDE CHEMICALLY APPLIED OR PLATED FINISHES

DECIMALS .X ± .05 .XX ± .01 .XXX ± .005

FRACTIONS 1/64

TOLS. ANGLES 0° -30'

MATERIAL

FINISH

| REQ'D | ITEM | PART NUMBER | DESCRIPTION | SYM. |
|--|------|-----------------|-------------|----------|
| F. BUDETTI LIST OF MATERIAL | | | | |
| THE TECHNICAL MATERIEL CORP. MAMARONECK, NEW YORK | | | | |
| TRANSFORMER, POWER, STEP DOWN | | | | |
| SIZE | B | CODE IDENT. NO. | 82679 | DWG NO. |
| | | | TF 365 | ISSUE B |
| SCALE | | | | SHEET OF |

5

4

3

2

1

5

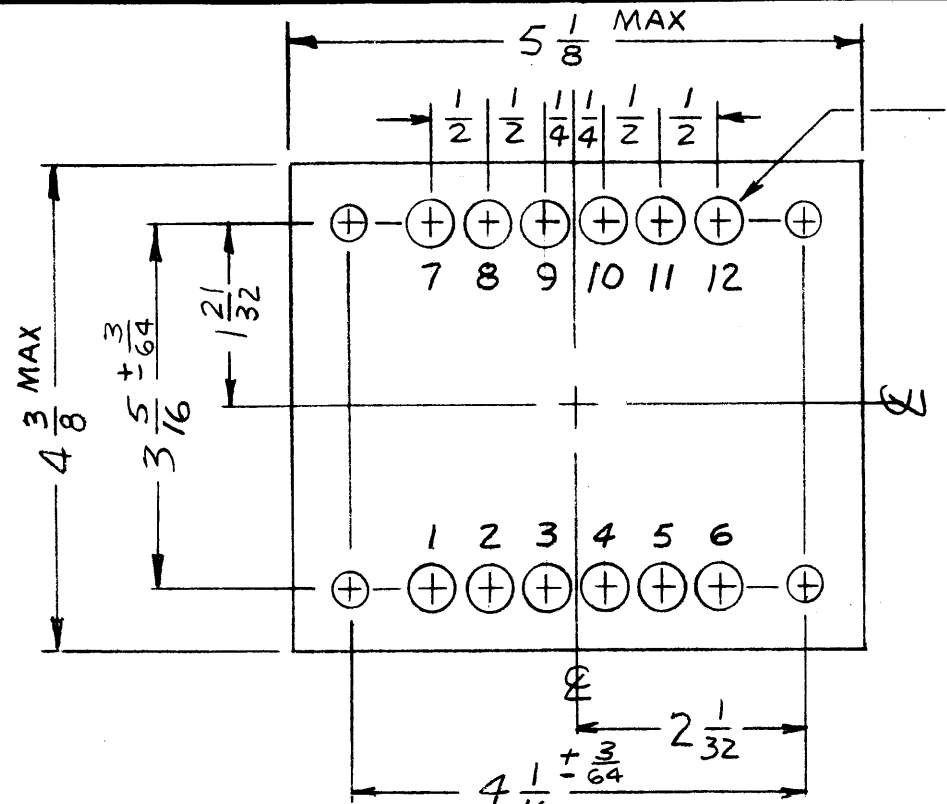
4

3

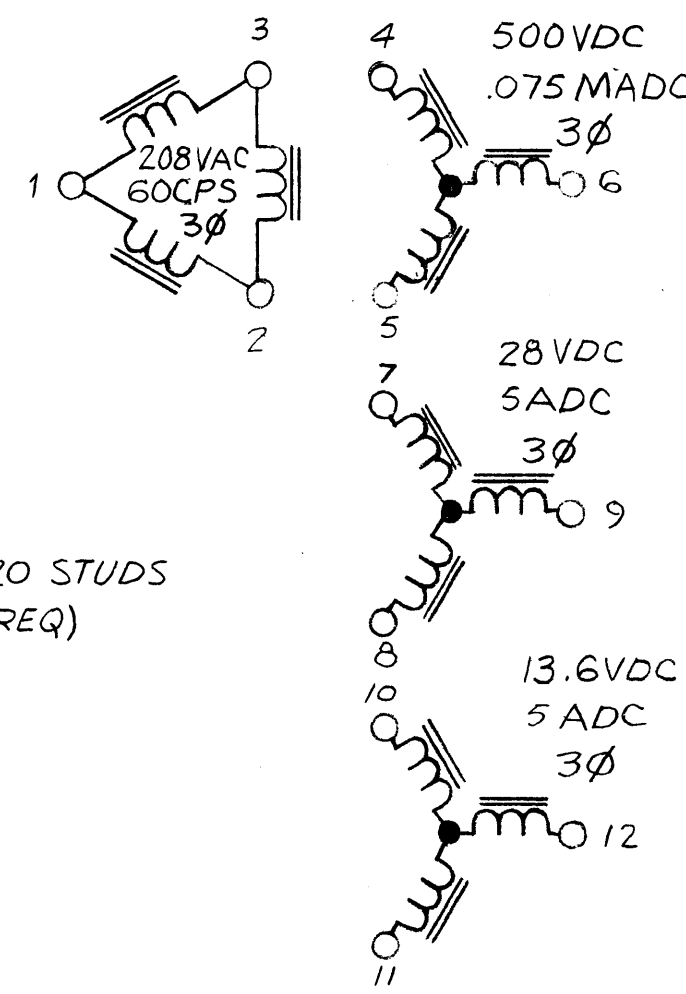
2

1

| REVISIONS | | | | | | |
|-----------|-----|-------------------------|--------|----------|-------|------|
| ZONE | LTR | DESCRIPTION | DATE | E.M.N.NO | DRAFT | CHKD |
| | X | EXP. RELEASE | 3.1.68 | | | |
| | Ø | ORIG. RELEASE FOR PROD. | 5.1.68 | Ø | RG. | |



THE TECHNICAL MATERIEL CORPORATION
MAMARONECK
NEW YORK
TF 366



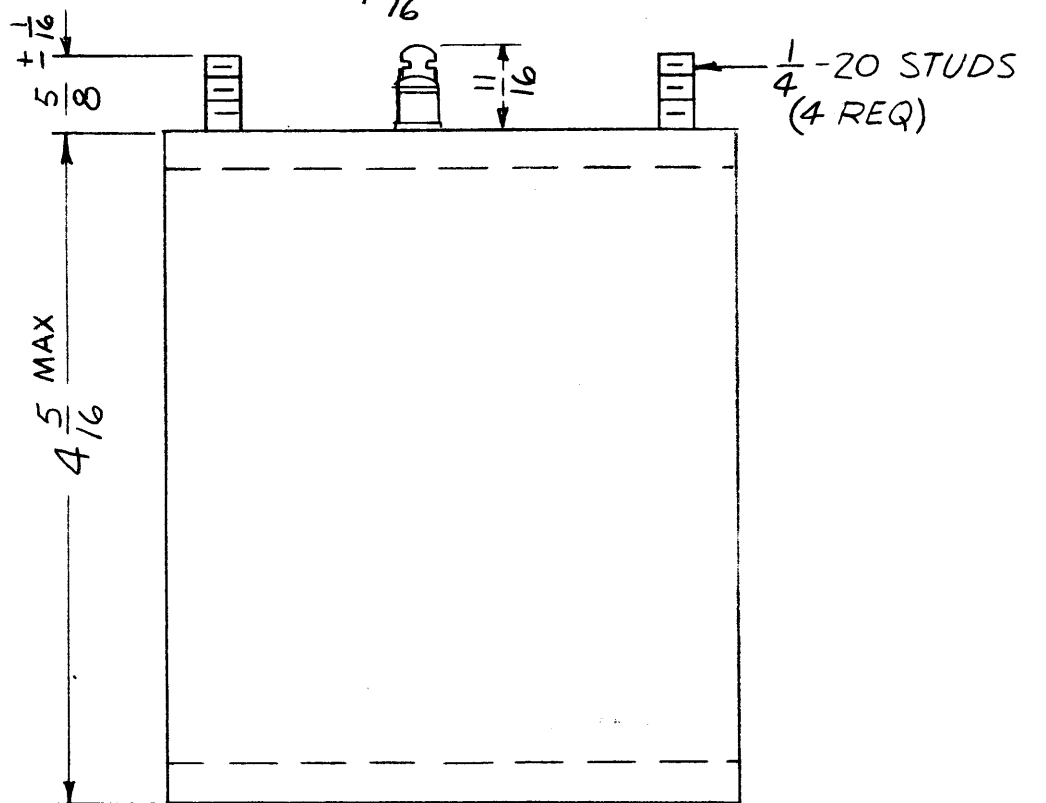
ELECTRICAL SPECIFICATIONS

PRIMARY: 208 VAC, 3Ø, 60 CPS
 SECONDARY: 13.6 VDC, 5A FROM 3Ø FWB
 SECONDARY: 500 VDC, .075A, FROM 3Ø FWB
 SECONDARY: 28 VDC, 5A FROM 5A, 3Ø FWB

MECHANICAL SPECIFICATIONS

CASE DATA:
 HERMETICALLY SEALED
 CASE DIMENSIONS: $4 \frac{3}{8} \times 5 \frac{1}{8} \times 4 \frac{5}{16}$
 TERMINAL DATA:
 NO OF TERMINALS: 12
 TYPE: CERAMIC, SOLDER TYPE
 FINISH: S115 SMOOTH GREY ENAMEL

MARKING: ALL TERMINALS TO BE METAL STAMPED
 (METAL CASE ONLY) SCHEMATIC AND
 TMC IDENTIFICATION TO BE MARKED
 ON TOP OF CASE. MARKING TO BE PER
 TMC SPECS S566 AND S727



NOTE:
 MANUFACTURED IN ACCORDANCE WITH
 MIL SPEC T-27-A, EXCEPT THAT
 MIL SPEC T-27-A SHALL NOT APPEAR
 ON CASE & QUALIFICATION TESTING
 NOT REQ.

| | | |
|-------------|---------------|-----------------|
| 1 | BCT-10KA | P/S |
| QTY / UNIT | MODEL USED ON | ASS'Y NO. |
| APPLICATION | | |
| | CODE A | S 401-30 (7896) |

NOTICE TO PERSONS RECEIVING THIS DRAWING
 THE TECHNICAL MATERIEL CORPORATION claims proprietary right in the material disclosed hereon. This drawing is issued in confidence for engineering information only and may not be reproduced or used to manufacture anything shown hereon without permission from THE TECHNICAL MATERIEL CORPORATION to the user. This drawing is loaned for mutual assistance and is subject to recall at any time.

| | | | |
|---|--|----------------|------|
| UNLESS OTHERWISE SPECIFIED DIMENSIONS ARE IN INCHES AND INCLUDE CHEMICALLY APPLIED OR PLATED FINISHES | | FINAL APPROVAL | DATE |
| DECIMALS .X ± .05 .XX ± .01 .XXX ± .005 | FRACTIONS 1/64 ANGLES 0° -30' | MECH. DES. | DATE |
| MATERIAL | | ELECT. DES. | DATE |
| FINISH | | CHECKED | DATE |
| | | DRAWN | DATE |

| REQ'D | ITEM | PART NUMBER | DESCRIPTION | SYM. |
|--|-----------------|-------------|-------------|------|
| F. BUDETTI LIST OF MATERIAL | | | | |
| THE TECHNICAL MATERIEL CORP. MAMARONECK, NEW YORK | | | | |
| TRANSFORMER, POWER, STEP-UP | | | | |
| SIZE | CODE IDENT. NO. | DWG NO. | ISSUE | |
| B | 82679 | TF 366 | Ø | |
| SCALE | | | SHEET | OF |

5

4

3

2

1

5

4

3

2

1

REVISIONS

| ZONE | LTR | DESCRIPTION | DATE | E.M.N.NO | DRAFT | CHKD | APPD |
|------|-----|-----------------------|---------|----------|-------|--------------------|--------------------|
| | X | EXP. RELEASE | 9.27.67 | | H.G. | <i>[Signature]</i> | <i>[Signature]</i> |
| | Ø | ORIG RELEASE FOR PROD | 10/9/67 | Ø | C.V. | <i>[Signature]</i> | |

SPECIFICATIONS

ELECTRICAL:

PRIMARY WINDING
 VOLTAGE: 115/230 VAC
 FREQUENCY: 50/60 CPS

SECONDARY WINDING
 VOLTAGE: 1200 VAC NO LOAD TO SUPPLY DUBLER CKT (3000 VAC) .3 ADC

PHASE: SINGLE
 INSULATION TEST VOLTAGE: 3000 VRMS

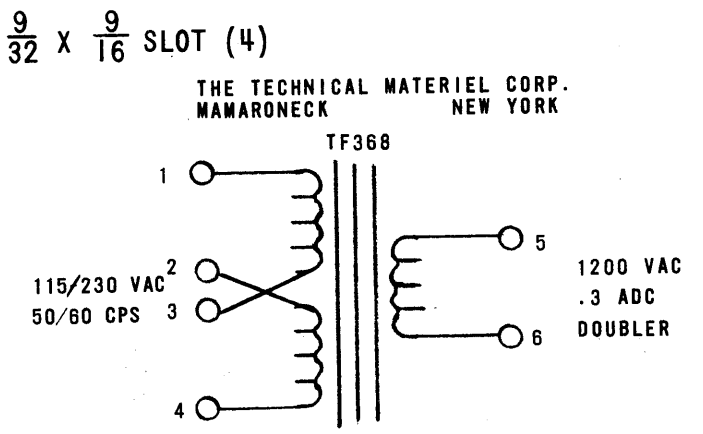
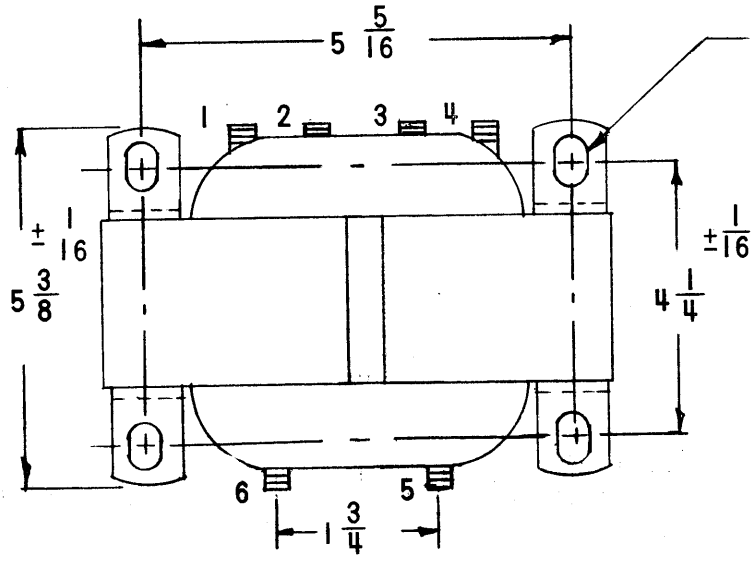
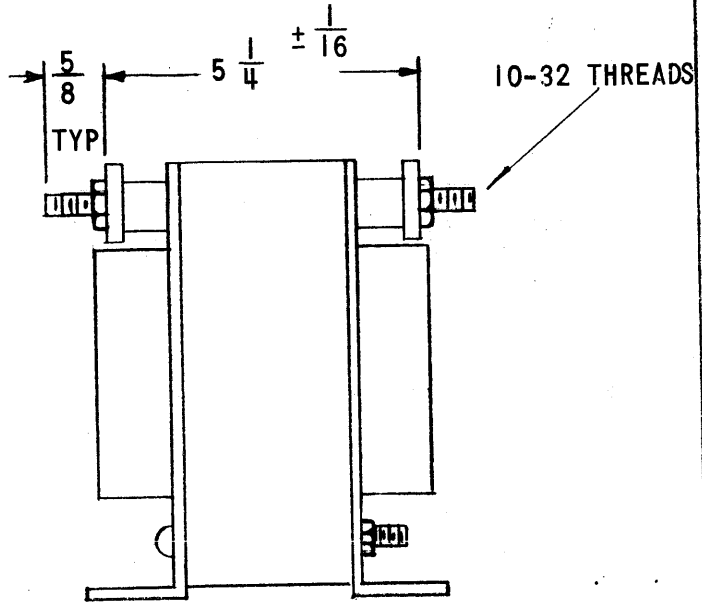
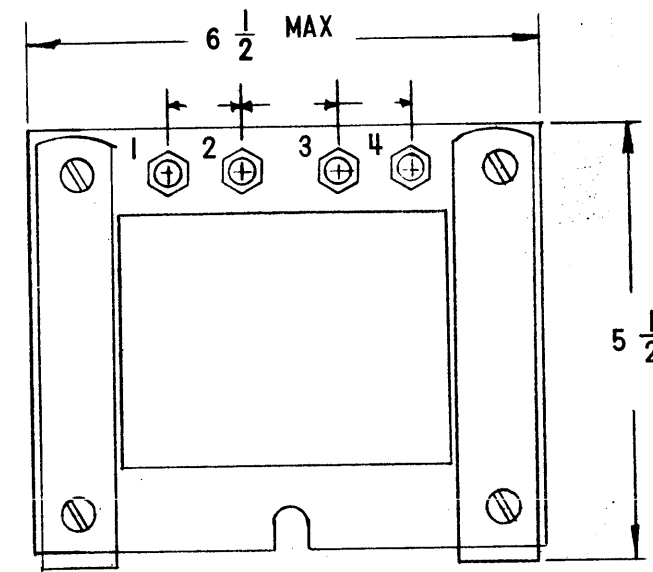
MECHANICAL:

CASE: OPEN FRAME
 FINISH: BLACK MATT
 EXCEPT TERMINALS

DIMENSIONS: SHOWN PICTORIALLY
 TERMINALS: 10-32 THREADS
 TOLERANCE RANGE: ±1/32 UNLESS OTHERWISE SPECIFIED

STAMPING: ACCORDING TO TMC SPEC S727 WHITE GOTHIC LETTERING AND LINE WORK
 SCHEMATIC TO BE PLACED AS SHOWN

NOTE: MANUFACTURED IN ACCORDANCE WITH MIL-SPEC T-27-A, EXCEPT THAT MIL SPEC T-27-A SHALL NOT APPEAR ON CASE AND QUALIFICATION TESTING NOT REQUIRED.



THE TECHNICAL MATERIEL CORP. MAMARONECK NEW YORK

TF368

| | | |
|-------------|--------------------|-----------|
| LPA-2 | | |
| QTY / UNIT | MODEL USED ON | ASS'Y NO. |
| APPLICATION | | |
| CODE | S401-30 (BCT#7849) | |

NOTICE TO PERSONS RECEIVING THIS DRAWING
 THE TECHNICAL MATERIEL CORPORATION claims proprietary right in the material disclosed hereon. This drawing is issued in confidence for engineering information only and may not be reproduced or used to manufacture anything shown hereon without permission from THE TECHNICAL MATERIEL CORPORATION to the user. This drawing is loaned for mutual assistance and is subject to recall at any time.

| REQ'D | ITEM | PART NUMBER | DESCRIPTION | SYM. |
|---|-----------------|-----------------------------------|--------------|---|
| F. BUDETTI LIST OF MATERIAL | | | | |
| UNLESS OTHERWISE SPECIFIED DIMENSIONS ARE IN INCHES AND INCLUDE CHEMICALLY APPLIED OR PLATED FINISHES | | FINAL APPROVAL <i>[Signature]</i> | DATE 10/6/67 | THE TECHNICAL MATERIEL CORP. MAMARONECK, NEW YORK |
| MECH. DES. | | DATE | | |
| ELECT. DES. | | DATE 10/10/67 | | |
| CHECKED <i>[Signature]</i> | | DATE | | |
| MATERIAL | | DRAWN H.G. | DATE 9.27.67 | TRANSFORMER, POWER STEP-UP |
| FINISH | | | | |
| SIZE | CODE IDENT. NO. | DWG NO. | ISSUE | |
| B | 82679 | TF 368 | Ø | |
| SCALE | SHEET | | OF | |
| | | | | |

5

4

3

2

1

| REVISIONS | | | | | | |
|-----------|-----|-----------------------|---------|----------|-------|--------------------|
| ZONE | LTR | DESCRIPTION | DATE | E.M.N.NO | DRAFT | CHKD APPD |
| | X | EXP. RELEASE | 9-8-67 | | H.G. | <i>[Signature]</i> |
| | Ø | ORIG RELEASE FOR PROD | 10/9/67 | Ø | C.V. | <i>[Signature]</i> |
| | A | ADDED SIDE VIEWS | 3/15/68 | 18817 | H.G. | <i>[Signature]</i> |
| | B | STUD CHT. ADDED | 8/24/72 | 20837 | GE | <i>[Signature]</i> |

| MODEL | * STUD REQUIREMENTS |
|----------|---|
| TF 369-1 | FOUR STUDS REQ. ON TOP |
| TF 369-2 | FOUR STUDS REQ. ON TOP AND FOUR STUDS ON BOTTOM |

SPECIFICATIONS

ELECTRICAL:

PRIMARY WINDING
 VOLTAGE: 110/220 VAC
 FREQUENCY: 50/60 CPS

SECONDARY WINDING
 VOLTAGE: 10V CT 15A, 22.4V 1A

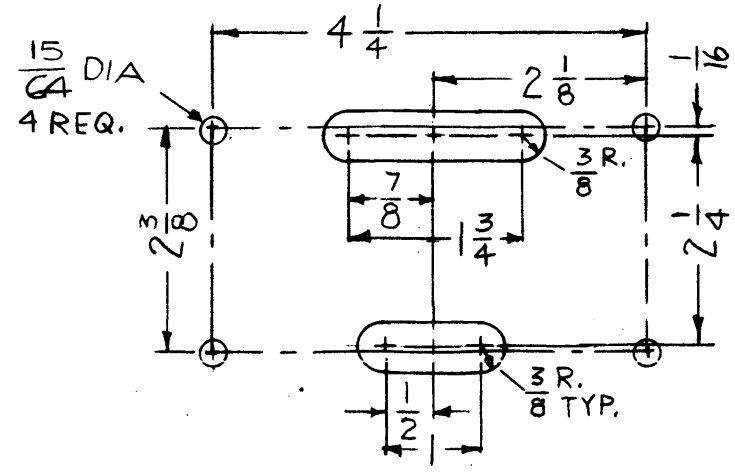
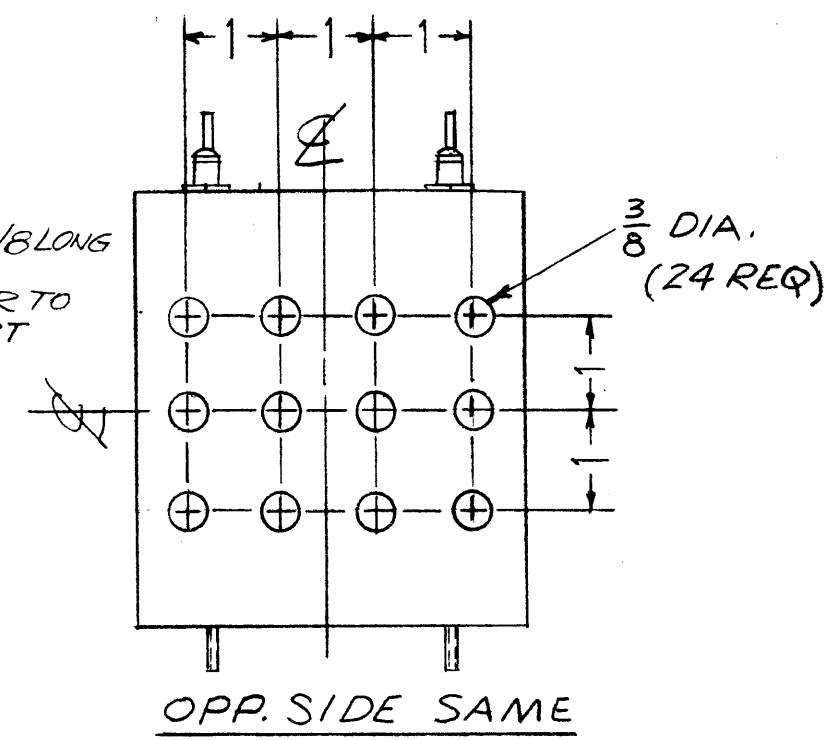
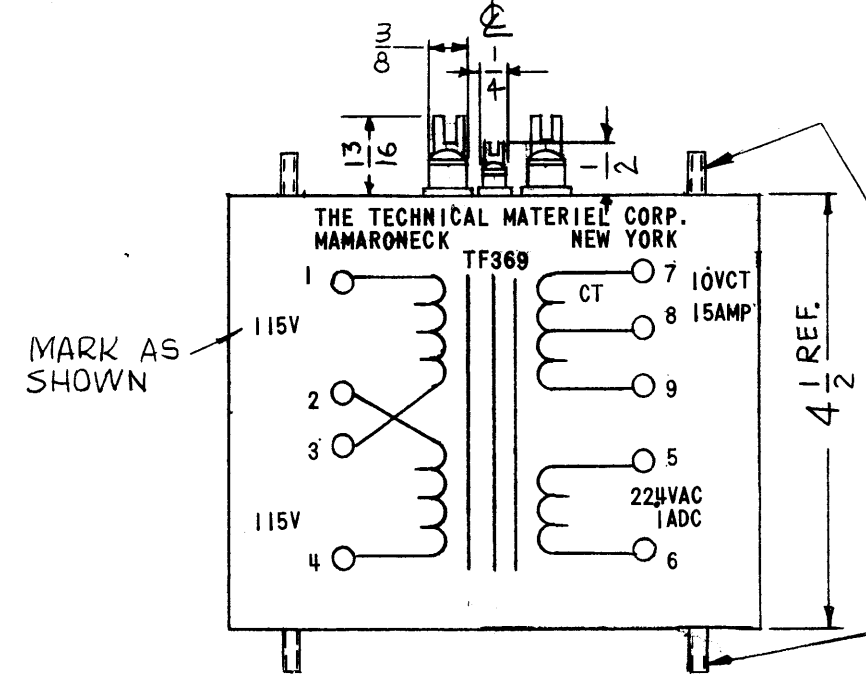
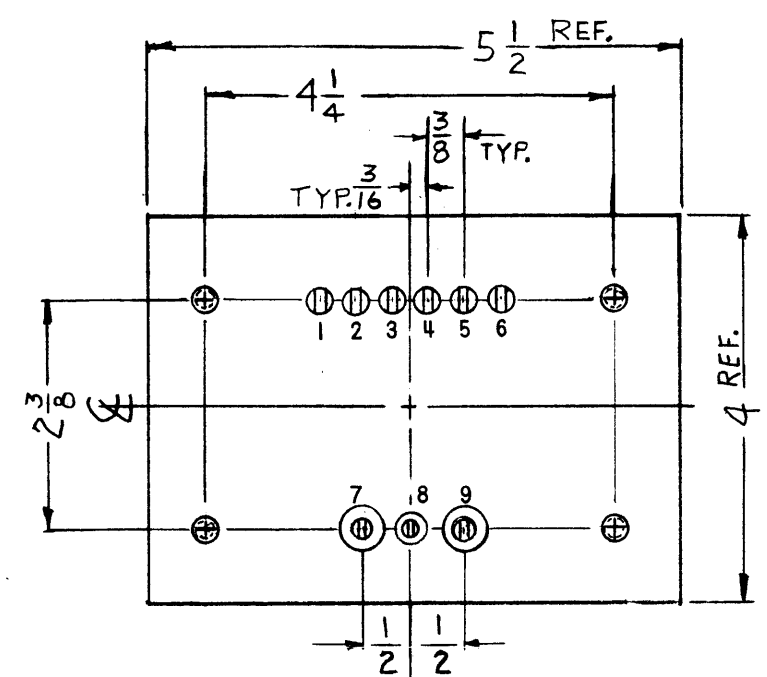
LOW CAPACITANCE 10V WINDING: APPROX 50 pF TO CASE MAX

MECHANICAL:

CASE: STEEL
 FINISH: BLACK MATT, EXCEPT TERMINALS
 DIMENSIONS: SHOWN PICTORIALY
 TERMINALS: CERAMIC (9) SOLDER TYPE
 TOLERANCE: ±1/32 UNLESS OTHERWISE SPECIFIED

STAMPING:
 ACCORDING TO TMC SPEC S727 WHITE GOTHIC LETTERING AND LINE WORK SCHEMATIC TO BE PLACED AS SHOWN.

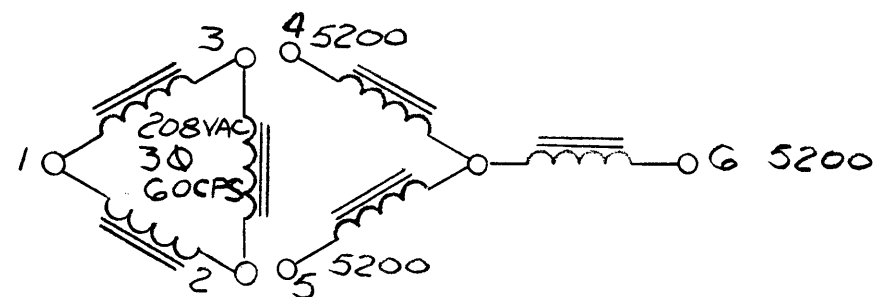
NOTE: MANUFACTURED IN ACCORDANCE WITH MIL SPEC T-27-A, EXCEPT THAT MIL SPEC T-27-A SHALL NOT APPEAR ON CASE AND QUALIFICATION TESTING NOT REQUIRED.



| QTY / UNIT | MODEL USED ON | ASS'Y NO. |
|---|---------------|--------------------|
| 1 | LPA-1K | |
| 1 | LPA-2 | |
| APPLICATION | | |
| | CODE | 5401-30 (BTC*7856) |
| <p>NOTICE TO PERSONS RECEIVING THIS DRAWING THE TECHNICAL MATERIEL CORPORATION claims proprietary right in the material disclosed hereon. This drawing is issued in confidence for engineering information only and may not be reproduced or used to manufacture anything shown hereon without permission from THE TECHNICAL MATERIEL CORPORATION to the user. This drawing is loaned for mutual assistance and is subject to recall at any time.</p> | | |
| MATERIAL | | |
| FINISH | | |
| BLACK MATT. | | |

| REQ'D | ITEM | PART NUMBER | DESCRIPTION | SYM. |
|--------------------|-----------------|-------------|--|------|
| | F. BUDETTI | | LIST OF MATERIAL | |
| FINAL APPROVAL | | DATE | THE TECHNICAL MATERIEL CORP. MAMARONECK, NEW YORK | |
| <i>[Signature]</i> | | 10/6/67 | XFMR, FILAMENT | |
| MECH. DES. | | DATE | | |
| ELECT. DES. | | DATE | X | |
| <i>[Signature]</i> | | 10/6/67 | | |
| CHECKED | | DATE | B | |
| DRAWN | | DATE | | |
| H.G. | | 9-8-67 | TF 369 | |
| MIL D | | | | |
| SIZE | CODE IDENT. NO. | DWG NO. | ISSUE | |
| B | 82679 | TF 369 | B | |
| SCALE 1/2 | | SHEET | | OF |

THE TECHNICAL MATERIEL CORPORATION
MAMARONECK NEW YORK
TF 373



| REVISIONS | | | | | | |
|-----------|-----|-------------------------|---------|----------|-------|-----------|
| ZONE | LTR | DESCRIPTION | DATE | E.M.N.NO | DRAFT | CHKD APPD |
| | X | EXP. RELEASE | 2-12-68 | | | |
| | Ø | ORIG. RELEASE FOR PROD. | 5-29-68 | | R.G. | |

SPECIFICATIONS:

ELECTRICAL

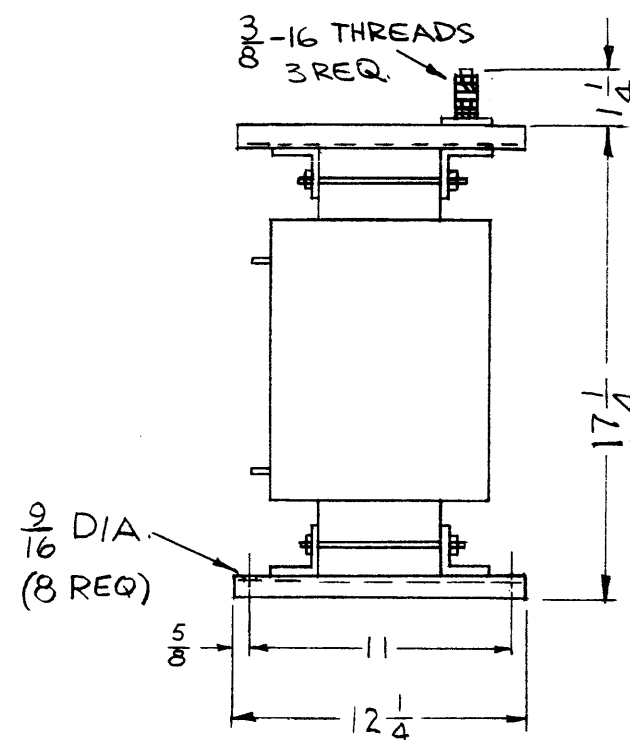
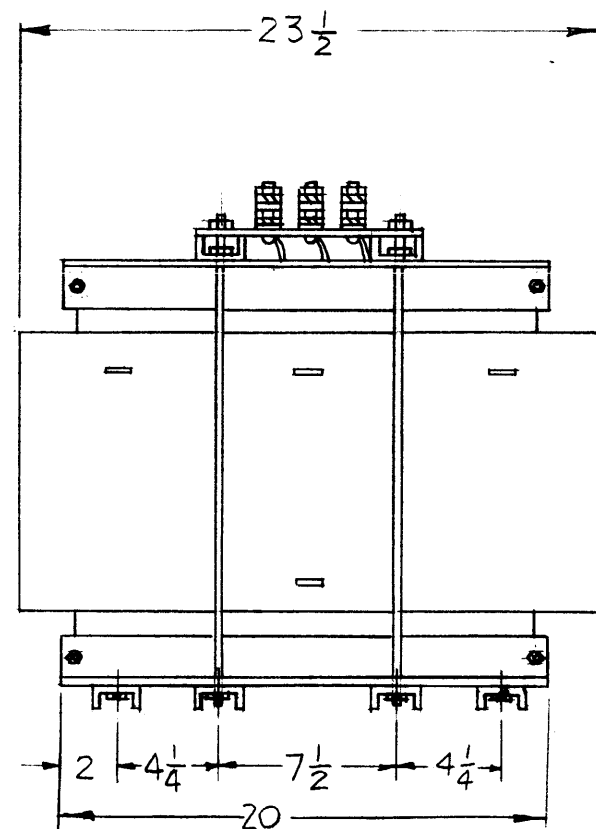
PRIMARY - 208 VAC
PHASE - 3, 60 CPS
VOLTAGE - 12KV.D.C.
CURRENT - 4 AMPS

MECHANICAL

CASE - OPEN FRAME
FINISH - S115 SMOOTH GRAY ENAMEL
EXCEPT TERMINALS
DIMENSIONS - SHOWN PICTORIALY
TERMINALS - THREADS
TOLERANCE RANGE $\pm 1/32$

STAMPING

ACCORDING TO TMC SPEC S-727
TERMINALS - SHALL BE STAMPED, WHITE
SCHEMATIC - TO BE PLACED AS SHOWN
BLACK GOTHIC LETTERING AND
LINEWORK



NOTES:

MFG. IN ACCORDANCE WITH/MIL-T-27A
EXCEPT MIL-T-27A SHALL NOT APPEAR ON
CASE AND QUALIFICATION TESTING
IS NOT REQUIRED

| | | |
|-------------|---------------|-------------|
| 1 | GPT-40KEL | |
| QTY / UNIT | MODEL USED ON | ASS'Y NO. |
| APPLICATION | | |
| | CODE | S401-(8071) |

NOTICE TO PERSONS RECEIVING THIS DRAWING
THE TECHNICAL MATERIEL CORPORATION claims proprietary right in the material disclosed hereon. This drawing is issued in confidence for engineering information only and may not be reproduced or used to manufacture anything shown hereon without permission from THE TECHNICAL MATERIEL CORPORATION to the user. This drawing is loaned for mutual assistance and is subject to recall at any time.

| | |
|---|--|
| UNLESS OTHERWISE SPECIFIED DIMENSIONS ARE IN INCHES AND INCLUDE CHEMICALLY APPLIED OR PLATED FINISHES | |
| DECIMALS .X \pm .05 .XX \pm .01 .XXX \pm .005 | FRACTIONS 1/64 ANGLES 0° -30' |

MATERIAL
AS NOTED
FINISH
AS NOTED

| | | | | |
|-----------------------------|-----------------|-------------|--|------|
| REQ'D | ITEM | PART NUMBER | DESCRIPTION | SYM. |
| F. BUDETTI LIST OF MATERIAL | | | | |
| FINAL APPROVAL | | DATE | THE TECHNICAL MATERIEL CORP. MAMARONECK, NEW YORK | |
| MECH. DES. | | DATE | TRANSFORMER, POWER, STEP-UP | |
| ELECT. DES. | | DATE | | |
| CHECKED | | DATE | | |
| DRAWN | | DATE | | |
| SIZE | CODE IDENT. NO. | DWG NO. | ISSUE | |
| B | 82679 | TF 373 | Ø | |
| SCALE-NONE | | | SHEET | OF |

5

4

3

2

1

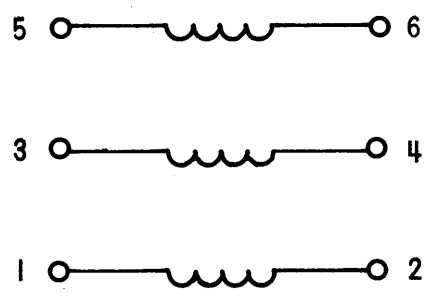
| REVISIONS | | | | | | |
|-----------|-----|--------------------------------------|----------|----------|-------|--------------------|
| ZONE | LTR | DESCRIPTION | DATE | E.M.N.NO | DRAFT | CHKD APPD |
| | X | EXPERIMENTAL RELEASE | 2/28/68 | | C.V. | <i>[Signature]</i> |
| | Ø | ORIG. RELEASE FOR PROD | 10-21-68 | | R.G. | <i>[Signature]</i> |
| | A | CHG LEAKAGE INDUCTANCE MAX & MIN COL | 1/16/69 | 19202 | C.V. | <i>[Signature]</i> |
| | B | PICTORIAL ADDED | | 19587 | CV | <i>[Signature]</i> |
| | C | CHG.-1-4 ON Lm mh | 2/11/70 | 19753 | GE | <i>[Signature]</i> |

| TMC P/N | TURNS RATIO TOLERANCE ±5% | MFGR PART NO | Lm mh ±20% | LEAKAGE INDUCTANCE MAX VALUE IN µH | | WINDING RESISTANCE MAX VALUE IN OHMS | | | INTERWINDING CAPACITY MAX VALUE IN PF | | EFFECTIVE DISTRIBUTED CAPACITY SHUNTING WINDING N ₁ MAX VALUE IN pF C _D (1,3,5 GRD) | ET MAX VALUE IN VOLT-µSEC |
|---------|---------------------------|--------------|------------|--|--|--------------------------------------|--------------------|--------------------|--|--|---|---------------------------|
| | | | | L ₁ (N ₁ -N ₂) | L ₁ (N ₁ -N ₃) | R(N ₁) | R(N ₂) | R(N ₃) | C ₁ (N ₁ -N ₂) | C ₁ (N ₁ -N ₂) | | |
| TF374-1 | 2:1:1 | 21LHA | 0.750 | 4.0 | 4.2 | 1.7 | 1.0 | 1.0 | 13 | 12.8 | 4.5 | 14 |
| -2 | 1:1:1 | 11GGA | 0.12 | .50 | .50 | 1.0 | 1.0 | 1.0 | 13.0 | 13.0 | 5 | 10 |
| -3 | 1:1:1 | 11KGB | 0.5 | .70 | .70 | 1.9 | 1.9 | 1.9 | 24.0 | 24.0 | 7 | 21 |
| -4 | 3:3:1 | 33HHA | 0.250 | .90 | 2.0 | 1.0 | 1.1 | 0.6 | 12 | 8 | 5 | 9 |
| -5 | 2:1:1 | 21PHA | 2.500 | 7.0 | 8.4 | 2.8 | 1.6 | 1.6 | 24 | 22 | 6 | 22 |

PURCHASING NOTE: VENDOR MUST INCLUDE THE FOLLOWING INFORMATION WHEN SHIPPING THIS ITEM TO TMC.

1. AN OUTLINE DRAWING OR ILLUSTRATION FROM CATALOG SHOWING ALL PERTINENT DIMENSIONS AND TOLERANCES.
2. ELECTRICAL AND/OR MECHANICAL SPECIFICATIONS AS SHOWN IN THEIR CATALOGS.

TYP SCHEMATIC



| | | |
|-------------|---------------|-----------|
| QTY / UNIT | MODEL USED ON | ASS'Y NO. |
| | HFRR-4 | |
| APPLICATION | | |
| | CODE | S401-94 |

NOTICE TO PERSONS RECEIVING THIS DRAWING
 THE TECHNICAL MATERIEL CORPORATION claims proprietary right in the material disclosed hereon. This drawing is issued in confidence for engineering information only and may not be reproduced or used to manufacture anything shown hereon without permission from THE TECHNICAL MATERIEL CORPORATION to the user. This drawing is loaned for mutual assistance and is subject to recall at any time.

| REQ'D | ITEM | PART NUMBER | DESCRIPTION | SYM. |
|---|------|---------------|--|-----------------|
| | | | POSE LIST OF MATERIAL | |
| UNLESS OTHERWISE SPECIFIED DIMENSIONS ARE IN INCHES AND INCLUDE CHEMICALLY APPLIED OR PLATED FINISHES DECIMALS: .X ± .05, .XX ± .01, .XXX ± .005 FRACTIONS: 1/64 TOLS. ANGLES: 0° -30' MATERIAL: _____ FINISH: _____ | | | | |
| E.M. APPROVAL | | DATE | THE TECHNICAL MATERIEL CORP. MAMARONECK, NEW YORK | |
| <i>[Signature]</i> | | | TRANSFORMER, PULSE, MICRO-MIN | |
| ELECT. DES. | | DATE | SIZE | CODE IDENT. NO. |
| CHECKED <i>[Signature]</i> | | DATE 10/14/68 | B | 82679 |
| DRAWN <i>[Signature]</i> | | DATE 2/28/68 | DWG NO. | ISSUE |
| | | | TF 374 | C |
| SCALE | | | SHEET | OF |

5

4

3

2

1

5

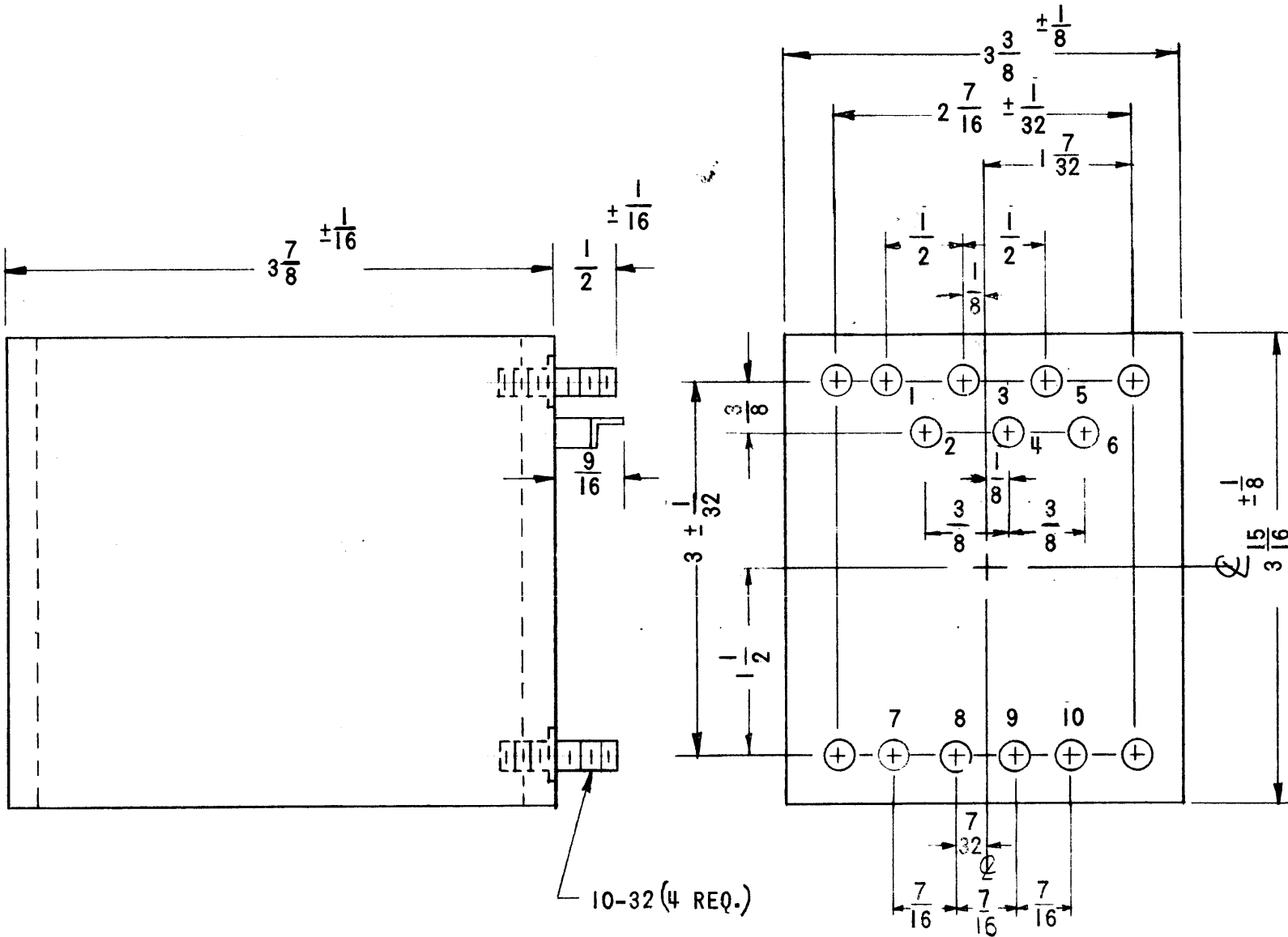
4

3

2

1

| REVISIONS | | | | | | |
|-----------|-----|-------------------------|----------|----------|-------|-----------|
| ZONE | LTR | DESCRIPTION | DATE | E.M.N.NO | DRAFT | CHKD APPD |
| | X | EXPERIMENTAL RELEASE | 7/5/68 | | C.V. | |
| | Ø | ORIG. RELEASE FOR PROD. | 11-26-68 | Ø | R.G. | |



SPECIFICATIONS

PRIMARY WINDING:

VOLTAGE: 115/230 VAC
 FREQUENCY: 50/60 Hz
 PHASE: 1

SECONDARY WINDING:

FULL LOAD:
 VOLTAGE: TERM (5-6) 18V, TERM (7-8) 20V, TERM (9-10) 18V
 CURRENT: TERM (5-6) 300mA, TERM (7-8) 200mA, TERM (9-10) 2ADC
 NO LOAD:
 VOLTAGE: TERM (5-6) 19V, TERM (7-8) 21V, TERM (9-10) 19V
 ELECTRO-STATIC SHIELDING TO BE PROVIDED

CASE DATA:

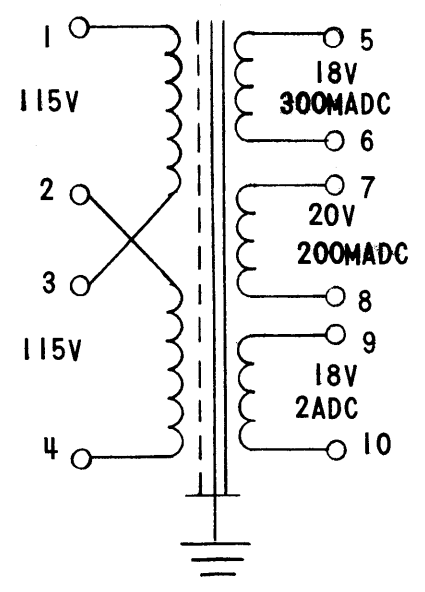
HERMETICALLY SEALED
 CASE TYPE: STEEL
 CASE DIMENSIONS: SHOWN PICTORIALY

MOUNTING DATA: SHOWN PICTORIALY

TERMINAL DATA:

NO. OF TERMINALS: 10
 TYPE: SOLDER TYPE INSULATED
 FINISH: SMOOTH GRAY ENAMEL (TMC SOEC S115) EXCEPT TERM ENDS.
 MARKING: ALL TERMINALS TO BE METAL STAMPED.
 MARKING TO BE PER TMC SPECS S566 AND S727.

SCHEMATIC



NOTE: TO BE MANUFACTURED IN ACCORDANCE WITH MIL-T-27A, EXCEPT THAT MIL-T-27A SHALL NOT APPEAR ON CASE AND QUALIFICATION TESTING IS NOT REQUIRED

| | | | |
|-------------|----------------|---------------|-----------|
| QTY / UNIT | RTPH-3 | MODEL USED ON | ASS'Y NO. |
| APPLICATION | | | |
| CODE | S401-30 (7995) | | |

NOTICE TO PERSONS RECEIVING THIS DRAWING
 THE TECHNICAL MATERIEL CORPORATION claims proprietary right in the material disclosed hereon. This drawing is issued in confidence for engineering information only and may not be reproduced or used to manufacture anything shown hereon without permission from THE TECHNICAL MATERIEL CORPORATION to the user. This drawing is loaned for mutual assistance and is subject to recall at any time.

UNLESS OTHERWISE SPECIFIED DIMENSIONS ARE IN INCHES AND INCLUDE CHEMICALLY APPLIED OR PLATED FINISHES

| | |
|-------------|--------------|
| DECIMALS | FRACTIONS |
| .X ± .05 | 1/64 |
| .XX ± .01 | TOLS. ANGLES |
| .XXX ± .005 | 0° .30' |

| | |
|----------|--|
| MATERIAL | |
| FINISH | |

| REQ'D | ITEM | PART NUMBER | DESCRIPTION | SYM. |
|--|-----------------|-------------|-------------|------|
| S. De MARCO LIST OF MATERIAL | | | | |
| THE TECHNICAL MATERIEL CORP. MAMARONECK, NEW YORK | | | | |
| TRANSFORMER, POWER, STEP-DOWN | | | | |
| SIZE | CODE IDENT. NO. | DWG NO. | ISSUE | |
| B | 82679 | TF 376 | Ø | |
| SCALE | SHEET | | | OF |

5

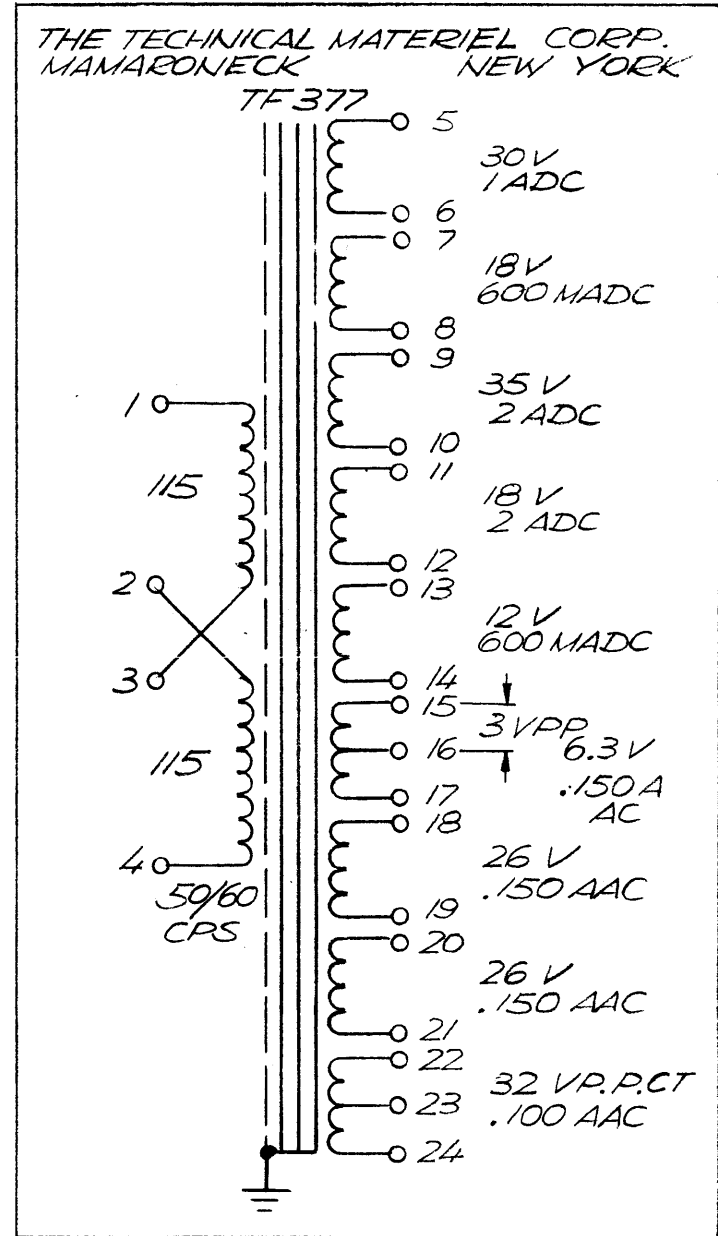
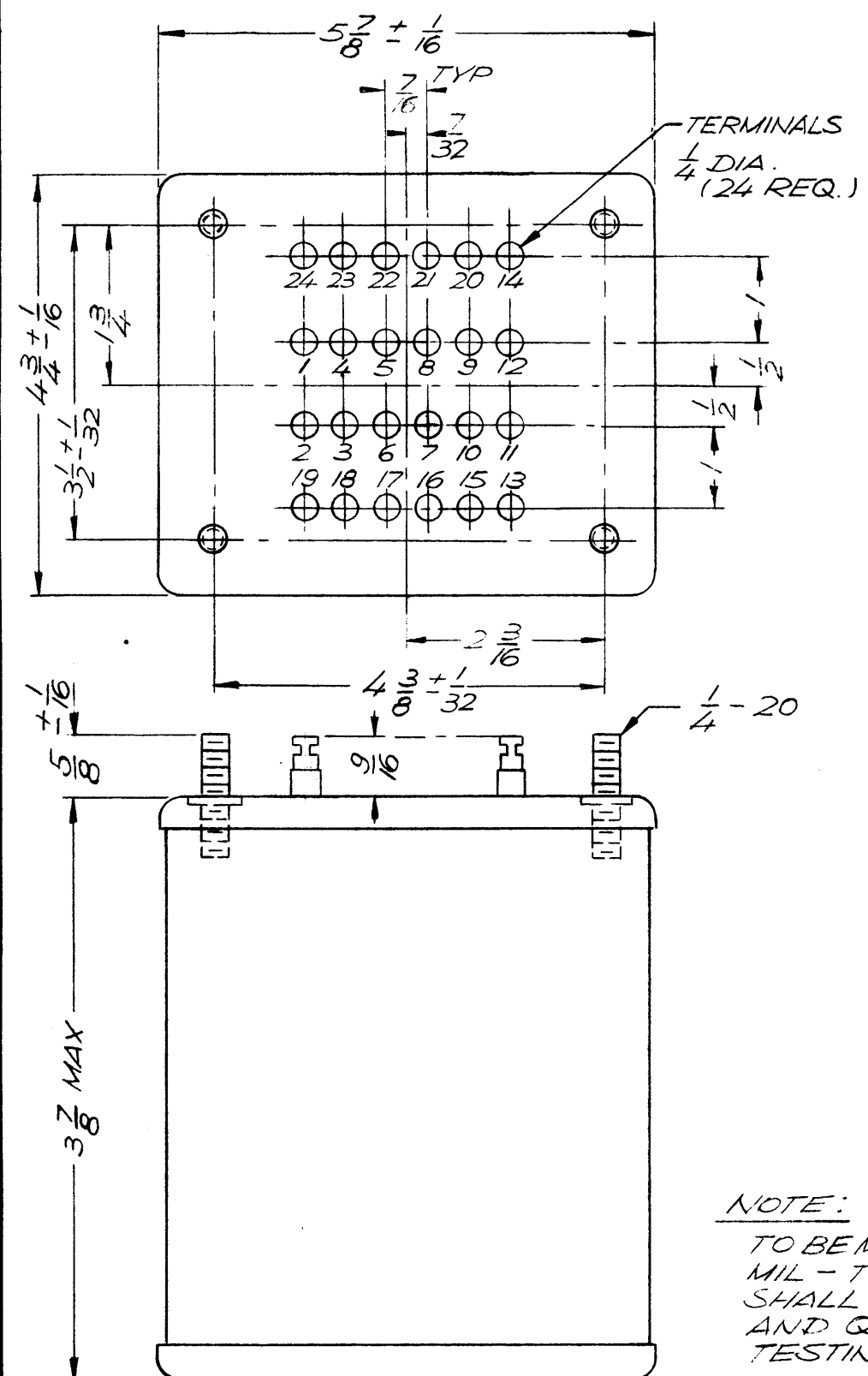
4

3

2

1

| REVISIONS | | | | | | |
|-----------|-----|-------------------------|----------|----------|-------|-----------|
| ZONE | LTR | DESCRIPTION | DATE | E.M.N.NO | DRAFT | CHKD APPD |
| | X | EXP. RELEASE | 11/12/68 | | K.H. | |
| | Ø | ORIG. RELEASE FOR PROD. | 11.20.68 | Ø | R.G. | J.H. |



MARKING

PRIMARY WINDING:

VOLTAGE: 115 / 230
 FREQUENCY: 50 / 60 Hz
 PHASE: 1

SECONDARY WINDING:

FULL LOAD
 VOLTAGE: AS SHOWN IN MARKING DETAIL

NO LOAD

VOLTAGE: TERM. (5-6) 31.2; (7-8) 18.6; (9-10) 36.1;
 (11-12) 18.6; (13-14) 12.6; (15-16) 1.09;
 (15-17) 6.55; (18-19) 26.8; (20-21) 26.8;
 (22-23-24) 24 VCT

CURRENT:

BREAK DOWN VOLTAGE: 1000

NOTE: ELECTRO-STATIC SHIELDING TO BE PROVIDED

CASE DATA:

HERMETICALLY SEALED
 CASE TYPE: STEEL
 CASE DIMENSIONS: SHOWN PICTORALLY

TERMINAL DATA:

NO. OF TERMINALS: 24
 TYPE: SOLDER TYPE INSULATED
 FINISH: SMOOTH GRAY ENAMEL (TMC S115)
 EXCEPT TERM. END
 MARKING: ALL TERM. NOS. TO BE METAL STAMPED
 SCHEMATIC DIAGRAM TO BE MARKED
 IN BLACK AS PER TMC SPEC, S 727

NOTE:

TO BE MANUFACTURED IN ACC/W
 MIL - T - 27, EXCEPT THAT MIL - T - 27
 SHALL NOT APPEAR ON CASE
 AND QUALIFICATION
 TESTING IS NOT REQUIRED.

PLACE MARKING ON THIS END

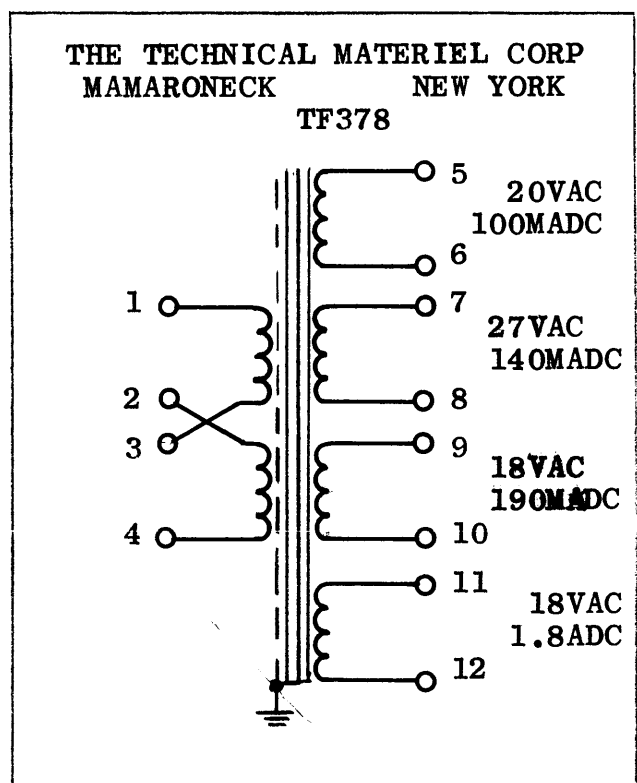
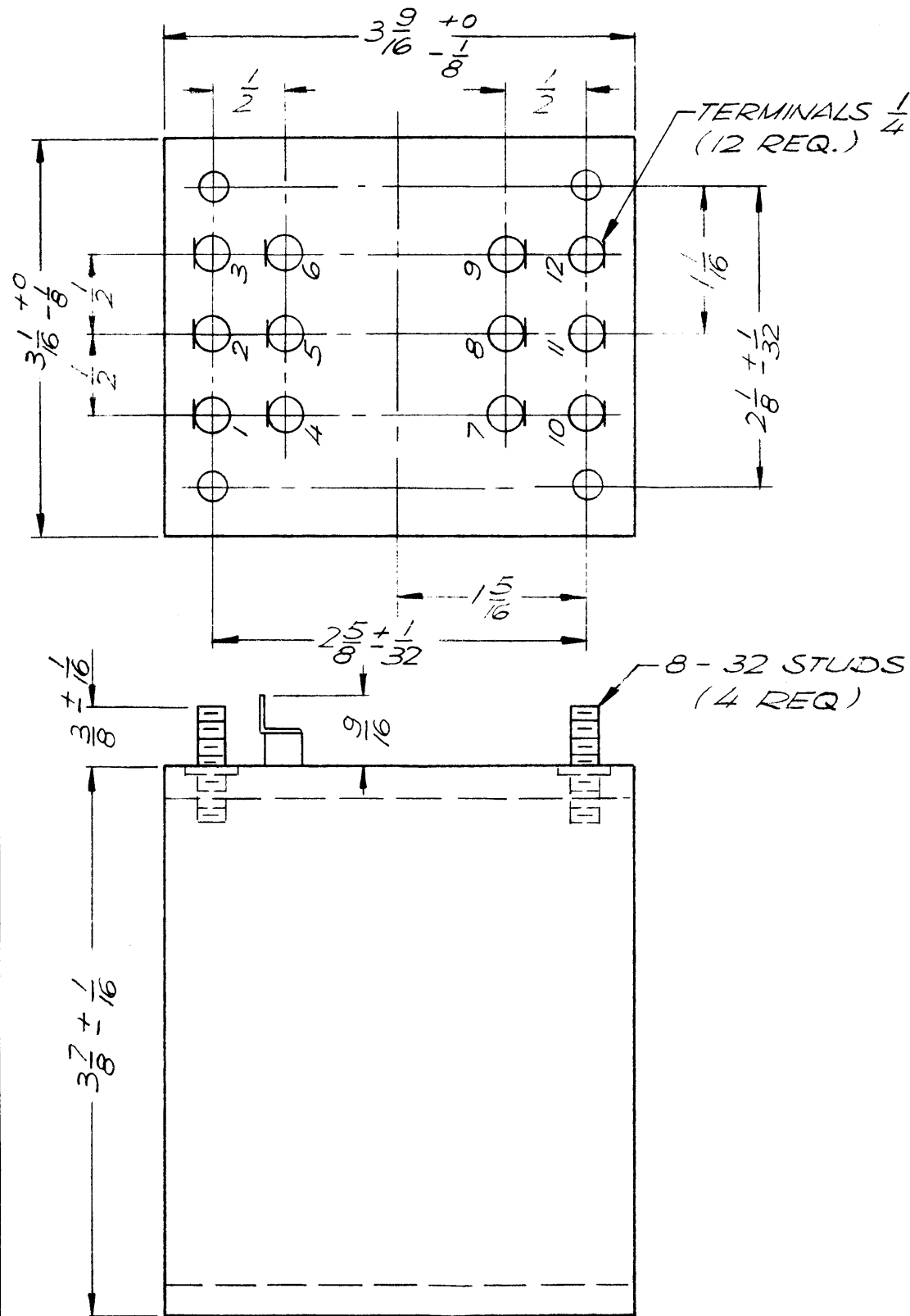
| | | |
|-------------|---------------|-----------|
| QTY / UNIT | RTTD - 4 | ASS'Y NO. |
| APPLICATION | | |
| CODE | S401-30(7951) | |

NOTICE TO PERSONS RECEIVING THIS DRAWING
 THE TECHNICAL MATERIEL CORPORATION claims proprietary right in the material disclosed hereon. This drawing is issued in confidence for engineering information only and may not be reproduced or used to manufacture anything shown hereon without permission from THE TECHNICAL MATERIEL CORPORATION to the user. This drawing is loaned for mutual assistance and is subject to recall at any time.

UNLESS OTHERWISE SPECIFIED
 DIMENSIONS ARE IN INCHES
 AND INCLUDE CHEMICALLY APPLIED
 OR PLATED FINISHES

| | |
|-------------|--------------|
| DECIMALS | FRACTIONS |
| .X ± .05 | 1/64 |
| .XX ± .01 | TOLS. ANGLES |
| .XXX ± .005 | 0° .30' |

| REQ'D | ITEM | PART NUMBER | DESCRIPTION | SYM. |
|--|-----------------|-------------|-------------|------|
| S. De MARCO LIST OF MATERIAL | | | | |
| THE TECHNICAL MATERIEL CORP. MAMARONECK, NEW YORK | | | | |
| TRANSFORMER, POWER, STEP-DOWN | | | | |
| SIZE | CODE IDENT. NO. | DWG NO. | ISSUE | |
| B | 82679 | TF 377 | Ø | |
| SCALE | | | SHEET OF | |



| REVISIONS | | | | | | |
|-----------|-----|------------------------|----------|----------|-------|-----------|
| ZONE | LTR | DESCRIPTION | DATE | E.M.N.NO | DRAFT | CHKD APPD |
| | X | EXP. RELEASE | 11/13/68 | | K.H. | |
| | Ø | ORIG. RELEASE FOR PROD | 11/20/68 | Ø | R.G. | J.W. |

PRIMARY WINDING:
 VOLTAGE: 115/230 VAC
 FREQUENCY: 50/60 Hz
 PHASE: 1

SECONDARY WINDING:
FULL LOAD:
 VOLTAGE: TERM (5-6) 20, (7-8) 27, (9-10) 18, (11-12) 18
 CURRENT: TERM (5-6) 100 MADC, (7-8) 140 MADC, (9-10) 190MADC, (11-12) 1.8 ADC

NO LOAD:
 VOLTAGE: TERM (5-6) 21.2, (7-8) 28.9, (9-10) 19.6, (11-12) 19.6

NOTE: ELECTRO-STATIC SHIELDING TO BE PROVIDED

BREAKDOWN VOLTAGE: 1000

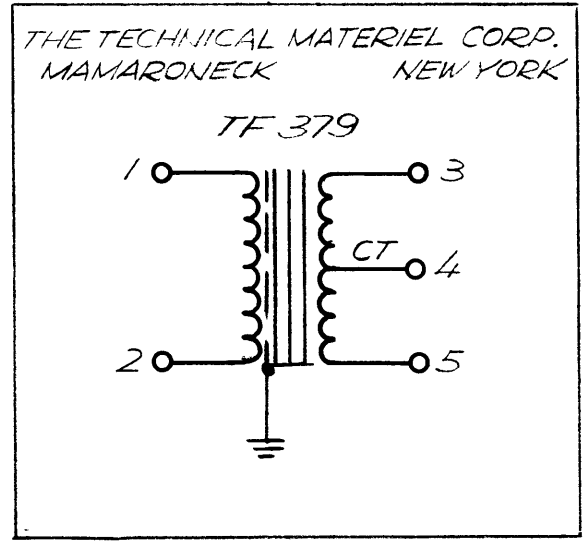
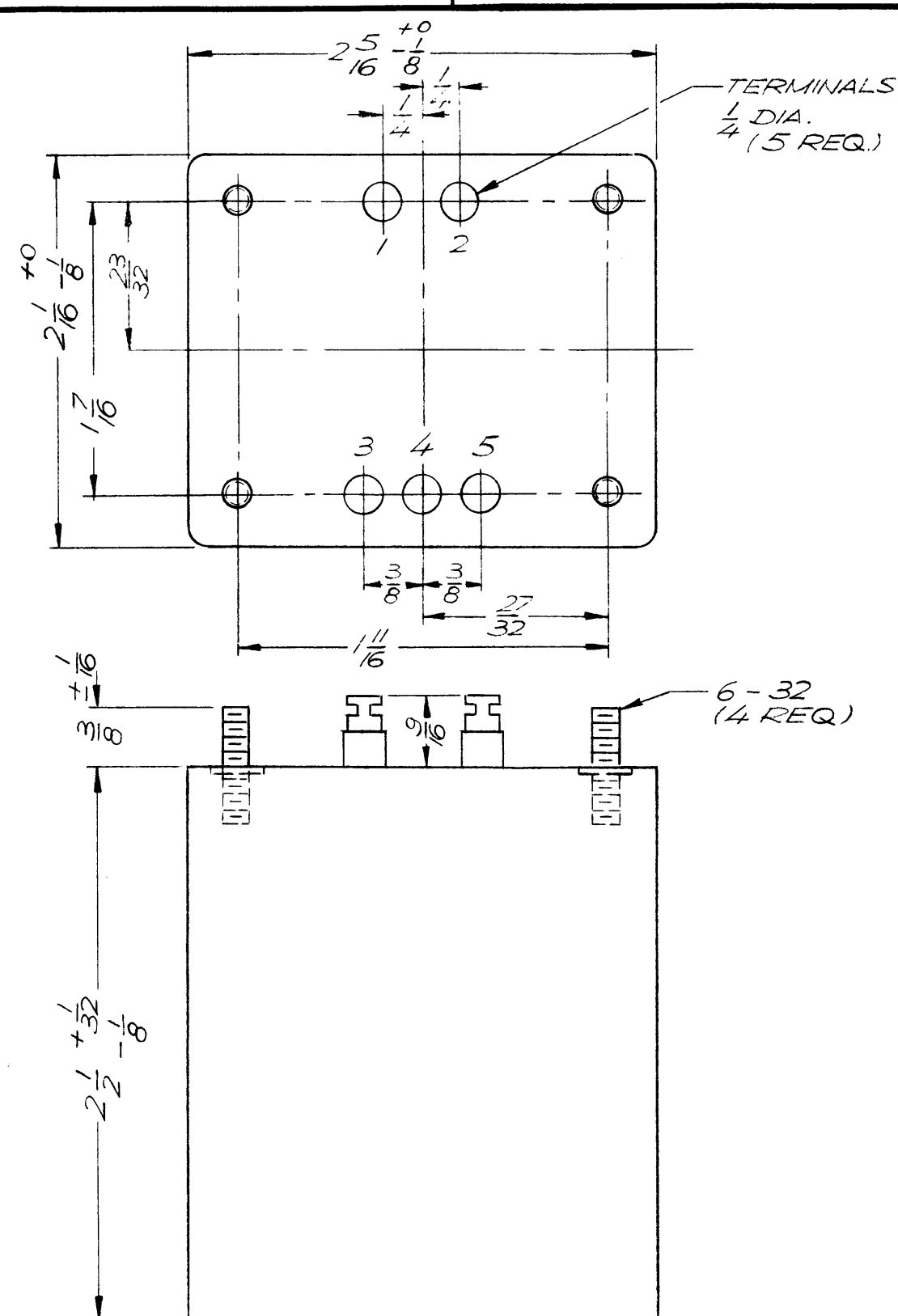
CASE DATA:
 HERMETICALLY SEALED:
 CASE TYPE: STEEL
 CASE DIMENSIONS: SHOWN PICTORIALY
 MOUNTING DATA: SHOWN PICTORIALY
 TERMINAL DATA:
 NO. OF TERM: 12
 TYPE: SOLDER TYPE INSULATED
 FINISH: SMOOTH GRAY ENAMEL (TMC SPEC S115) EXCEPT TERM END

NOTE: TO BE MANUFACTURED IN ACCORDANCE WITH MIL-T-27 EXCEPT THAT MIL-T-27 SHALL NOT APPEAR ON CASE OR QUALIFICATION TESTING IS NOT REQUIRED

| | |
|--|---------------|
| RTMU41 / RTMU42 | |
| QTY / UNIT | MODEL USED ON |
| APPLICATION | |
| CODE | S401-50(7739) |
| NOTICE TO PERSONS RECEIVING THIS DRAWING THE TECHNICAL MATERIEL CORPORATION claims proprietary right in the material disclosed hereon. This drawing is issued in confidence for engineering information only and may not be reproduced or used to manufacture anything shown hereon without permission from THE TECHNICAL MATERIEL CORPORATION to the user. This drawing is loaned for mutual assistance and is subject to recall at any time. | |

| | |
|---|--|
| UNLESS OTHERWISE SPECIFIED DIMENSIONS ARE IN INCHES AND INCLUDE CHEMICALLY APPLIED OR PLATED FINISHES | |
| DECIMALS .X ± .05 .XX ± .01 .XXX ± .005 | FRACTIONS 1/64 ANGLES 0° .30' |
| MATERIAL | |
| FINISH | |

| | | | | |
|---|-----------------|-------------|--|------|
| REQ'D | ITEM | PART NUMBER | DESCRIPTION | SYM. |
| S. De MARCO LIST OF MATERIAL | | | | |
| FINISH APPROVAL <i>S. De Marco</i> 11/19/68 MECH. DES. DATE | | | THE TECHNICAL MATERIEL CORP. MAMARONECK, NEW YORK | |
| ELECT. DES. DATE CHECKED <i>JAG</i> 11-19-68 DRAWN <i>K.H.</i> 11/13/68 | | | TRANSFORMER, POWER | |
| SIZE | CODE IDENT. NO. | DWG NO. | ISSUE | |
| B | 82679 | TF 378 | Ø | |
| SCALE | | | SHEET OF | |



| REVISIONS | | | | | | |
|-----------|-----|------------------------|----------|----------|-------|-----------|
| ZONE | LTR | DESCRIPTION | DATE | E.M.N.NO | DRAFT | CHKD APPD |
| | X | EXP. RELEASE | 11/12/68 | | K.H. | |
| | Ø | ORIG. RELEASE FOR PROD | 11-20-68 | Ø | R.G. | J.O. |

ELECTRICAL SPECIFICATION:

PRIMARY WINDING:
TERM 1 & 2: 1,000 TURNS # 34 WIRE

SECONDARY WINDING:
3;4&5: 500 TURNS W/CT
#36 WIRE BIFILAR WOUND

FREQUENCY: 60 CPS

CURRENT:

BREAKDOWN VOLTAGE: 500 VOLTS

NOTE: ELECTRO-STATIC SHIELDING TO BE PROVIDED

CASE DATA:
HERMETICALLY SEALED:
MATERIAL: STEEL
PHYSICAL SIZE: SHOWN PICTORIALY
FINISH: SMOOTH GRAY ENAMEL (TMC S115) EXCEPT TERM END
TERMINALS DATA:

QTY: 5
TYPE: SOLDER TYPE, INSULATED

MARKING:

ALL TERM NOS. TO BE METAL STAMPED, SCHEMATIC DIAGRAM TO BE MARKED IN BLACK ON END OPPOSITE TERMINALS, AS PER TMC SPEC. S727

| | | |
|--|----------------|-----------|
| RTTD - 4 | | |
| QTY / UNIT | MODEL USED ON | ASS'Y NO. |
| APPLICATION | | |
| CODE | S401-30 (7833) | |
| <p>NOTICE TO PERSONS RECEIVING THIS DRAWING THE TECHNICAL MATERIEL CORPORATION claims proprietary right in the material disclosed hereon. This drawing is issued in confidence for engineering information only and may not be reproduced or used to manufacture anything shown hereon without permission from THE TECHNICAL MATERIEL CORPORATION to the user. This drawing is loaned for mutual assistance and is subject to recall at any time.</p> | | |

| | |
|---|---------------------------------------|
| UNLESS OTHERWISE SPECIFIED DIMENSIONS ARE IN INCHES AND INCLUDE CHEMICALLY APPLIED OR PLATED FINISHES | |
| DECIMALS .X ± .05 .XX ± .01 .XXX ± .005 | FRACTIONS 1/64 ANGLES 0° 30' |
| MATERIAL | |
| FINISH | |

| | | | | |
|-------------------------------------|-----------------|------------------|---|------|
| REQ'D | ITEM | PART NUMBER | DESCRIPTION | SYM. |
| S. DE MARCO | | LIST OF MATERIAL | | |
| FIN. APPROVAL <i>S. De Marco</i> | | DATE 11/19/68 | THE TECHNICAL MATERIEL CORP. MAMARONECK, NEW YORK | |
| MECH. DES. <i>[Signature]</i> | | DATE 11-19-68 | TRANSFORMER, POWER, SERVO | |
| ELECT. DES. <i>[Signature]</i> | | DATE 11/12/68 | | |
| CHECKED <i>[Signature]</i> | | DATE 11/12/68 | | |
| DRAWN <i>[Signature]</i> | | DATE 11/12/68 | | |
| SIZE | CODE IDENT. NO. | DWG NO. | ISSUE | |
| B | 82679 | TF 379 | Ø | |
| SCALE | | SHEET OF | | |

| REVISIONS | | | | | | |
|-----------|-----|-----------------------|----------|----------|-------|-----------|
| ZONE | LTR | DESCRIPTION | DATE | E.M.N.NO | DRAFT | CHKD APPD |
| | X | EXPERIMENTAL RELEASE | 11/15/68 | | C.V. | |
| | Ø | ORIG. RELEASE | 12-3-68 | | | JFB |
| | Δ | MARKING & FINISH REV. | 5.8.69 | 19413 | GE | JFB |

SPECIFICATIONS

ELECTRICAL:

PRIMARY: 208 VAC, 60 CPS
INSULATION TEST VOLTAGE:

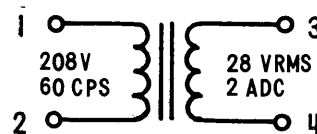
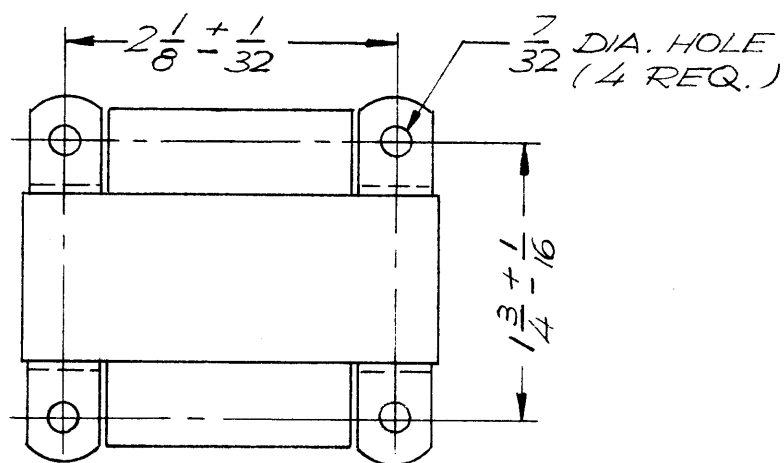
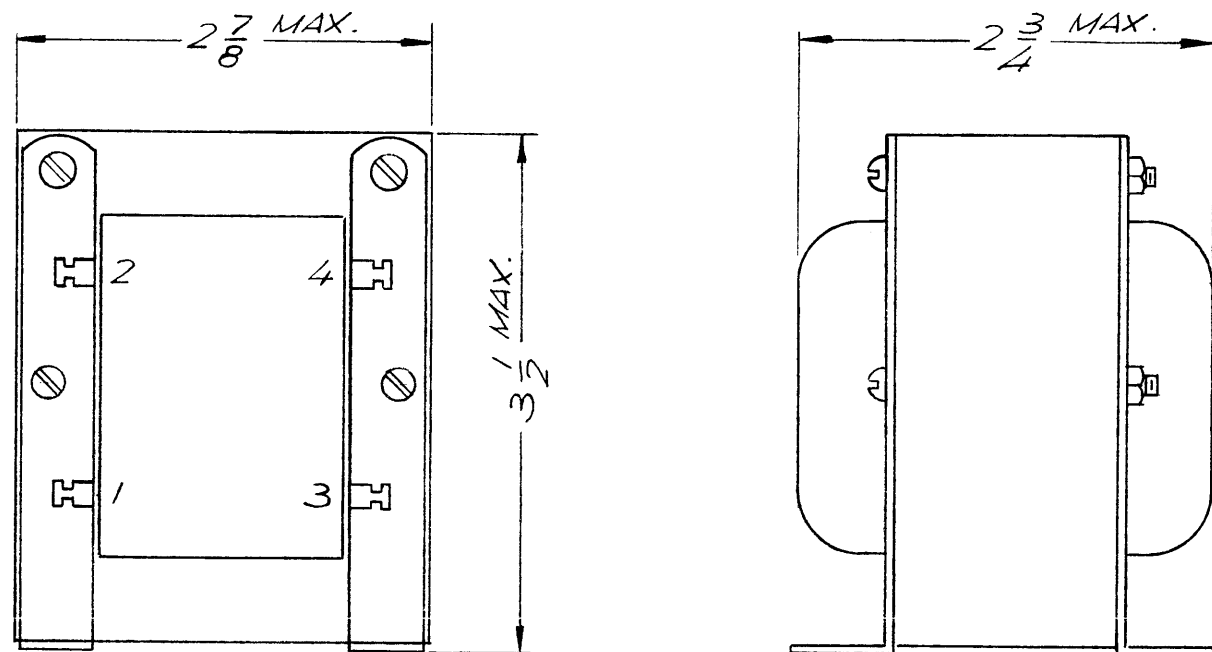
SECONDARY: 28 VAC RMS 2 ADC

MECHANICAL:

CASE: OPEN FRAME
FINISH: BLACK
DIMENSIONS: SHOWN PICTORIALLY
TERMINALS: LUGS (OFF OF COIL)

MARKING: TERMINAL NUMERALS, WHITE GOTHIC

NOTE: MANUFACTURED IN ACCORDANCE WITH MIL-SPEC T-27-A EXCEPT THAT MIL-SPEC T-27-A SHALL NOT APPEAR ON CASE AND QUALIFICATION TESTING NOT REQUIRED



| | | |
|--------------------|------------------------|----------------|
| | GPT 40KEL GPT 10KRL | AX688 |
| QTY / UNIT | MODEL USED ON | ASS'Y NO. |
| APPLICATION | | |
| | CODE | S401-30 (8150) |

NOTICE TO PERSONS RECEIVING THIS DRAWING
THE TECHNICAL MATERIEL CORPORATION claims proprietary right in the material disclosed hereon. This drawing is issued in confidence for engineering information only and may not be reproduced or used to manufacture anything shown hereon without permission from THE TECHNICAL MATERIEL CORPORATION to the user. This drawing is loaned for mutual assistance and is subject to recall at any time.

UNLESS OTHERWISE SPECIFIED DIMENSIONS ARE IN INCHES AND INCLUDE CHEMICALLY APPLIED OR PLATED FINISHES

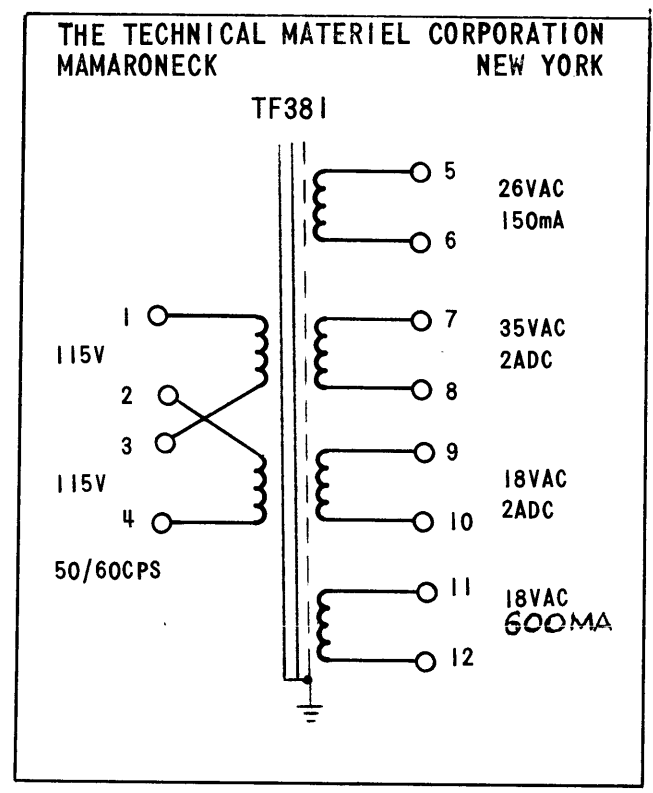
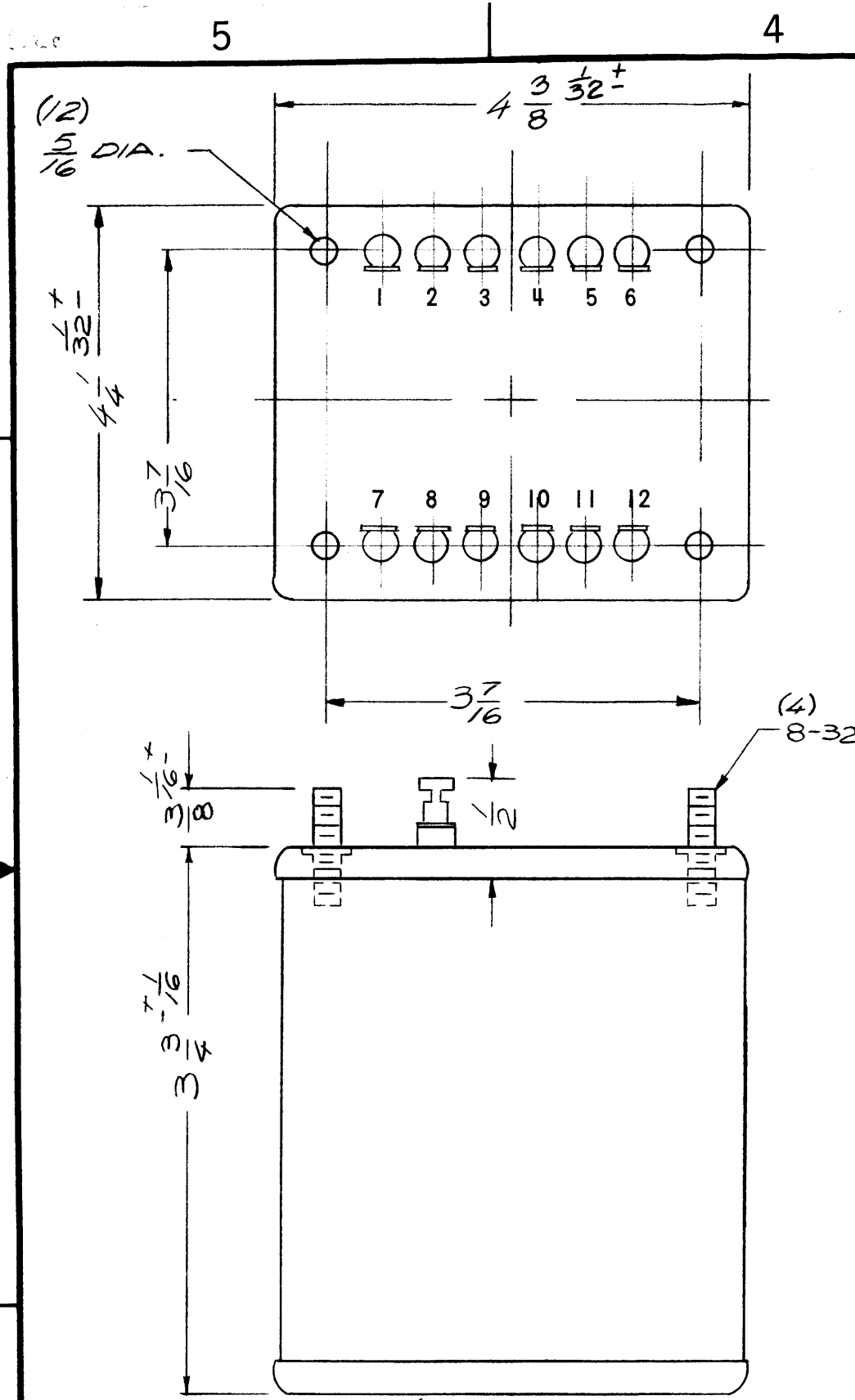
DECIMALS .X ± .05
.XX ± .01
.XXX ± .005

FRACTIONS 1/64
ANGLES 0° -30'

MATERIAL

FINISH

| REQ'D | ITEM | PART NUMBER | DESCRIPTION | SYM. |
|--------------------------------------|-----------------|------------------|---|------|
| BUDETTI LIST OF MATERIAL | | | | |
| | | | THE TECHNICAL MATERIEL CORP. MAMARONECK, NEW YORK | |
| | | | TRANSFORMER, POWER | |
| FINAL APPROVAL <i>[Signature]</i> | | DATE | | |
| MECH. DES <i>[Signature]</i> | | DATE | | |
| ELECT. DES <i>[Signature]</i> | | DATE | | |
| CHECKED | | DATE | | |
| DRAWN <i>[Signature]</i> | | DATE 11/15/68 | | |
| SIZE | CODE IDENT. NO. | DWG NO. | ISSUE | |
| B | 82679 | TF 380 | A | |
| SCALE | | SHEET | OF | |



MARKING:
 ALL TERMINAL NUMBERS TO BE METAL STAMPED
 SCHEMATIC DIAGRAM TO BE MARKED IN BLACK
 AS PER TMC SPEC S727

NOTE: TO BE MANUFACTURED IN ACCORDANCE WITH MIL-T-27
 EXCEPT THAT MIL-T-27 SHALL NOT APPEAR ON CASE OR
 QUALIFICATION TESTING IS NOT REQUIRED.

| REVISIONS | | | | | | |
|-----------|-----|------------------------|---------|----------|-------|-----------|
| ZONE | LTR | DESCRIPTION | DATE | E.M.N.NO | DRAFT | CHKD APPD |
| | X | EXP RELEASE | 3.18.69 | | GE | |
| | Ø | ORIG. RELEASE FOR PROD | 4/1/69 | | RG | |
| | A | 600MA WAS 6ADC | 5.8.69 | 19408 | GE | J.D. SDM |

SPECIFICATIONS

PRIMARY WINDING:
 VOLTAGE: 115/230 VAC
 FREQUENCY: 50/60 CPS
 PHASE: SINGLE

SECONDARY WINDING:
 FULL LOAD:
 VOLTAGE: TERM (5-6) 26V
 (7-8) 35V
 (9-10) 18V
 (11-12) 18V

CURRENT: TERM (5-6) 150 mA
 (7-8) 2A
 (9-10) 2A
 (11-12) 600 mA

NOTE: ELECTRO-STATIC SHIELDING TO BE PROVIDED
 BREAKDOWN VOLTAGE: 1000

CASE DATA:
 HERMETICALLY SEALED:
 CASE TYPE: STEEL
 CASE DIMENSIONS: SHOWN PICTORIALY

MOUNTING DATA: SHOWN PICTORIALY
 TERMINAL DATA: SHOWN PICTORIALY
 NO. OF TERM: 12
 TYPE: SOLDER TYPE INSULATED
 FINISH: SMOOTH GRAY ENAMEL (TMC SPEC S115) EXCEPT TERM END

PLACE SCHEMATIC DIAGRAM
 ON THIS END

| | | |
|-------------|---------------|-----------|
| QTY / UNIT | MODEL USED ON | ASS'Y NO. |
| | RTTD-5, SA | |
| APPLICATION | | |
| | CODE | |

NOTICE TO PERSONS RECEIVING THIS DRAWING
 THE TECHNICAL MATERIEL CORPORATION claims proprietary right in the material disclosed hereon. This drawing is issued in confidence for engineering information only and may not be reproduced or used to manufacture anything shown hereon without permission from THE TECHNICAL MATERIEL CORPORATION to the user. This drawing is loaned for mutual assistance and is subject to recall at any time.

| | | |
|---|--|-----------------|
| UNLESS OTHERWISE SPECIFIED DIMENSIONS ARE IN INCHES AND INCLUDE CHEMICALLY APPLIED OR PLATED FINISHES | FINAL APPROVAL S. DeMARCO MECH. DES. | DATE 4/1/69 |
| DECIMALS .X ± .05 .XX ± .01 .XXX ± .005 | FRACTIONS 1/64 ANGLES 0°-30' | DATE 3.18.69 |
| MATERIAL | ELECT. DES. | DATE |
| FINISH | CHECKED J.D. | DATE 4/1/69 |
| SEE SPEC | DRAWN G. EVANGELIST | DATE 3.18.69 |

| REQ'D | ITEM | PART NUMBER | DESCRIPTION | SYM. |
|--|-----------------|-------------|-------------|------|
| S. DeMARCO LIST OF MATERIAL | | | | |
| THE TECHNICAL MATERIEL CORP. MAMARONECK, NEW YORK | | | | |
| TRANSFORMER, POWER | | | | |
| SIZE | CODE IDENT. NO. | DWG. NO. | ISSUE | |
| B | 82679 | TF 381 | A | |
| SCALE NTS | | | SHEET OF | |

5

4

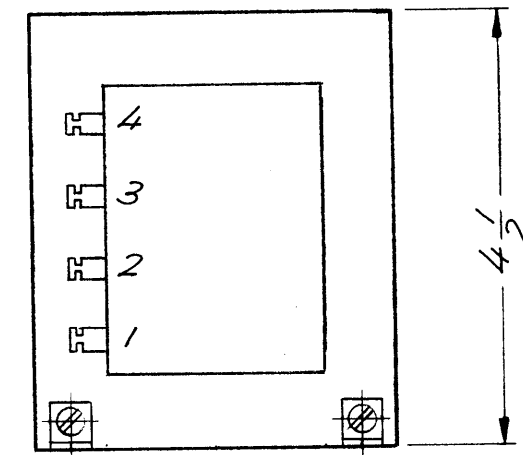
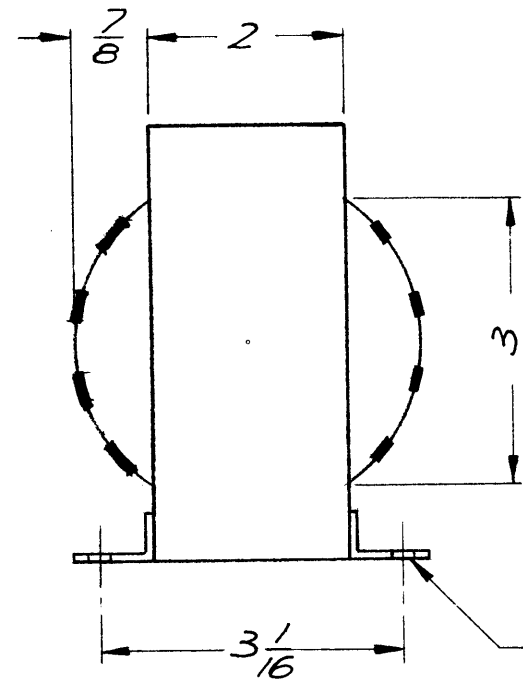
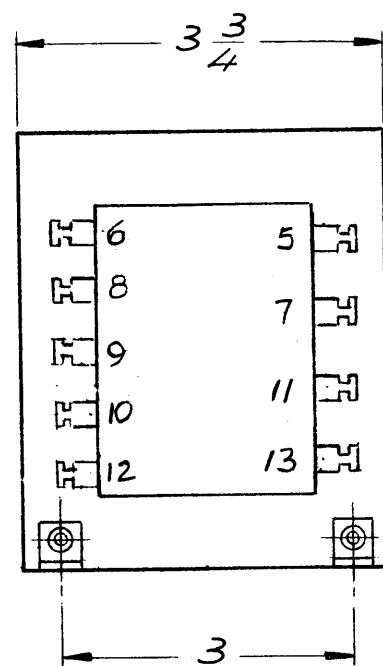
3

2

1

REVISIONS

| ZONE | LTR | DESCRIPTION | DATE | E.M.N.NO | DRAFT | CHKD | APPD |
|------|-----|-----------------------|---------|----------|-------|------|------|
| | X | EXP. RELEASE | 4/1/69 | X | K.H. | | |
| | Ø | ORIG RELEASE FOR PROD | 5/17/69 | | CV | | |
| | A | TERMINALS REVISED | 1-27-76 | 21343 | GDL | CL | CL |



SPECIFICATIONS

ELECTRICAL:

PRIMARY WINDING:
 VOLTAGE: TERMINALS 1,2,3,4 115/230V
 FREQUENCY: 50/60 CPS
 PHASE: 1
 INSULATION TEST VOLTAGE: 1000 VDC

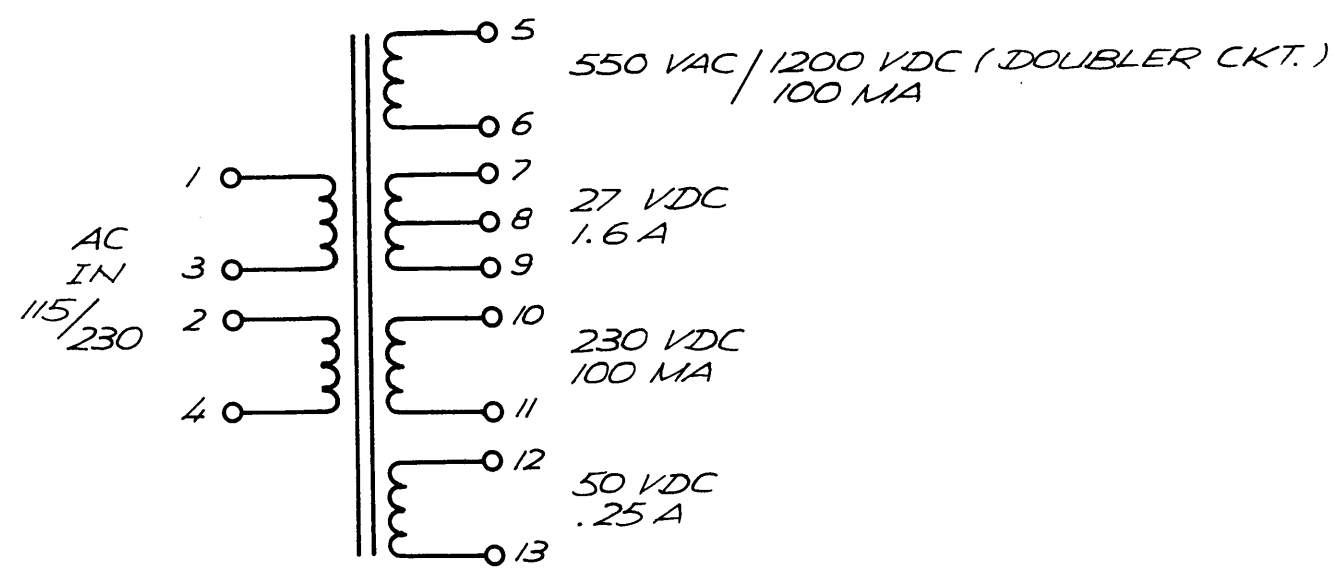
SECONDARY WINDING:
 VOLTAGE:
 TERMINALS: 5,6 - 550VAC
 7,8,9 - 27VDC
 10,11 - 230VDC
 12,13 - 50VDC

MECHANICAL:

CASE: OPEN
 FINISH: BLACK MATT
 DIMENSIONS: SHOWN PICTORIALY
 TERMINALS: SOLDER TYPE

STAMPING: ACCORDING TO TMC SPEC S727 WHITE
 GOTHIC LETTERING AND LINE WORK'

NOTE: TO BE MANUFACTURED IN ACCORDANCE WITH
 MIL-T-27 EXCEPT THAT MIL-T-27 SHALL NOT
 APPEAR ON CASE OR QUALIFICATION TESTING
 IS NOT REQUIRED.



| REQ'D | ITEM | PART NUMBER | DESCRIPTION | SYM. |
|--|-----------------|-------------|-------------|------|
| O. POSE LIST OF MATERIAL | | | | |
| THE TECHNICAL MATERIEL CORP. MAMARONECK, NEW YORK | | | | |
| TRANSFORMER, POWER | | | | |
| SIZE | CODE IDENT. NO. | DWG NO. | ISSUE | |
| B | 82679 | TF 382 | A | |
| SCALE | SHEET | | | OF |

| | | |
|-------------|---------------|-----------|
| QTY / UNIT | MODEL USED ON | ASS'Y NO. |
| | MTR () - 150 | |
| APPLICATION | | |
| | CODE | |

NOTICE TO PERSONS RECEIVING THIS DRAWING
 THE TECHNICAL MATERIEL CORPORATION claims proprietary right in the material disclosed hereon. This drawing is issued in confidence for engineering information only and may not be reproduced or used to manufacture anything shown hereon without permission from THE TECHNICAL MATERIEL CORPORATION to the user. This drawing is loaned for mutual assistance and is subject to recall at any time.

| | |
|---|--------------|
| UNLESS OTHERWISE SPECIFIED DIMENSIONS ARE IN INCHES AND INCLUDE CHEMICALLY APPLIED OR PLATED FINISHES | |
| DECIMALS | FRACTIONS |
| .X ± .05 | 1/64 |
| .XX ± .01 | TOLS. ANGLES |
| .XXX ± .005 | 0° - 30' |
| MATERIAL | |
| FINISH S401-30 (8352) | |

| | |
|--------------------|---------|
| FINAL APPROVAL | DATE |
| <i>[Signature]</i> | 7/15/69 |
| MECH. DES. | DATE |
| <i>[Signature]</i> | 7/15/69 |
| ELECT. DES. | DATE |
| <i>[Signature]</i> | 7-3-69 |
| CHECKED | DATE |
| <i>[Signature]</i> | 4/1/69 |
| DRAWN | DATE |
| <i>[Signature]</i> | 4/1/69 |

| REVISIONS | | | | | | |
|-----------|-----|---------------------|---------|----------|-------|-----------|
| ZONE | LTR | DESCRIPTION | DATE | E.M.N.NO | DRAFT | CHKD APPD |
| | X | EXP. RELEASE | 12/1/69 | | KL | |
| | Ø | ORIGINAL RELEASE | 1/11/70 | | Q | |
| | A | ADD SPARE PARTS NTE | 3-27-72 | 20562 | GE | EL EL |

FOR SPARE PARTS USE ONLY

REPLACED BY TF 421

ELECT. SPECS:

PRIMARY WINDING
 VOLTAGE: 200 - 250 VAC
 FREQUENCY: 50/60 HZ
 PHASE: SINGLE
 SECONDARY WINDING
 VOLTAGE: 6.2 VAC C.T.
 CURRENT: 125 A
 INSULATION TEST VOLTAGE: 1500 VRMS

MECH. SPECS:

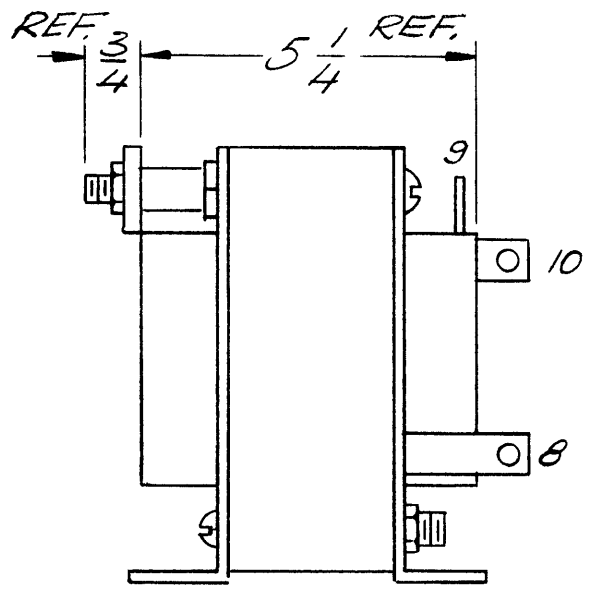
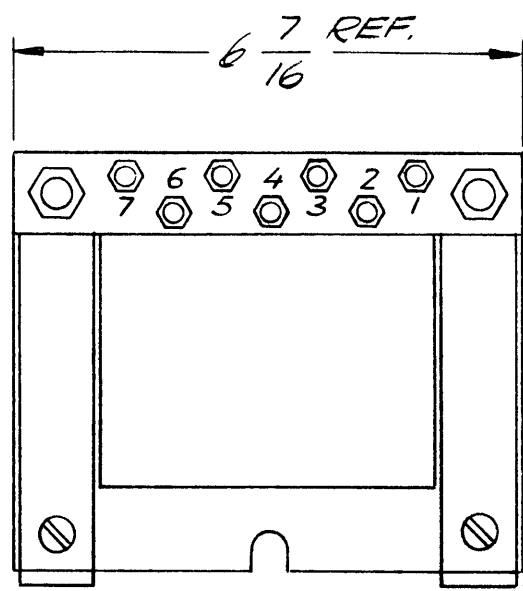
CASE: OPEN FRAME
 FINISH: BLACK MATT EXCEPT TERMINALS
 DIMENSIONS: SHOWN PICTORIALY
 TERMINALS: PRIMARY: 10-32 THREADED STUD
 SECONDARY: 8 + 10, COPPER BAR WITH
 3/16 DIA. HOLES
 9, SOLDER TYPE LUG.

STAMPING:

ACCORDING TO TMC SPEC. S 727 WHITE GOTHIC
 LETTERING AND LINE WORK.
 SCHEMATIC TO BE PLACED AS SHOWN.

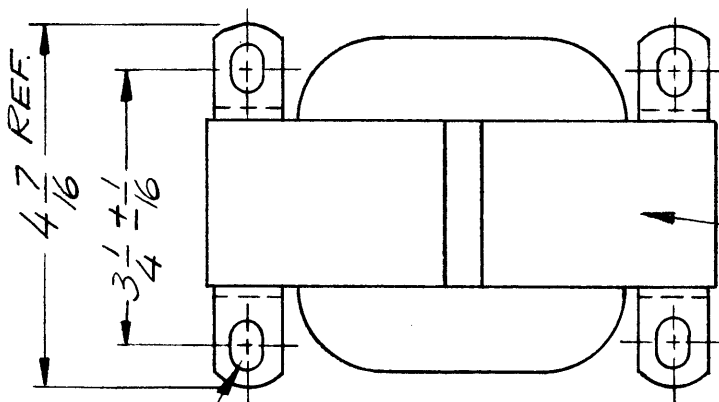
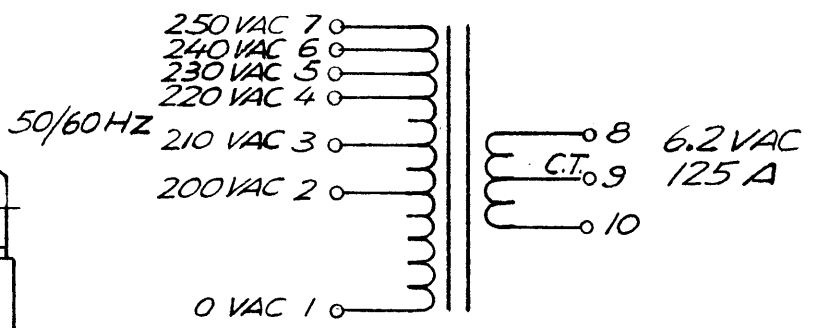
NOTE:

MANUFACTURED IN ACCORDANCE WITH MIL - SPEC.
 T - 27 - A, EXCEPT THAT MIL - SPEC. T - 27 - A
 SHALL NOT APPEAR ON THE CASE AND QUALIFICATION
 TESTING IS NOT REQUIRED.



THE TECHNICAL MATERIEL CORP.
 MAMARONECK NEW YORK

TF 383



TO BE PLACED
 IN THIS AREA

| REQ'D | ITEM | PART NUMBER | DESCRIPTION | SYM. |
|-------|------|-------------|-------------|------|
|-------|------|-------------|-------------|------|

LIST OF MATERIAL

UNLESS OTHERWISE SPECIFIED
 DIMENSIONS ARE IN INCHES
 AND INCLUDE CHEMICALLY APPLIED
 OR PLATED FINISHES

| | |
|--------------|------|
| FINAL APPROV | DATE |
| MECH. DES | DATE |
| ELECT. DES. | DATE |
| CHECKED | DATE |
| DRAWN | DATE |

THE TECHNICAL MATERIEL CORP.
 MAMARONECK, NEW YORK

| | | |
|------------|---------------|-----------|
| 1 | PALA-10K | AP 14B |
| QTY / UNIT | MODEL USED ON | ASS'Y NO. |

APPLICATION

| | |
|------|---------------|
| CODE | 5401-30(8495) |
|------|---------------|

| | |
|-------------|--------------|
| DECIMALS | FRACTIONS |
| .X ± .05 | 1/64 |
| .XX ± .01 | TOLS. ANGLES |
| .XXX ± .005 | 0° - 30' |

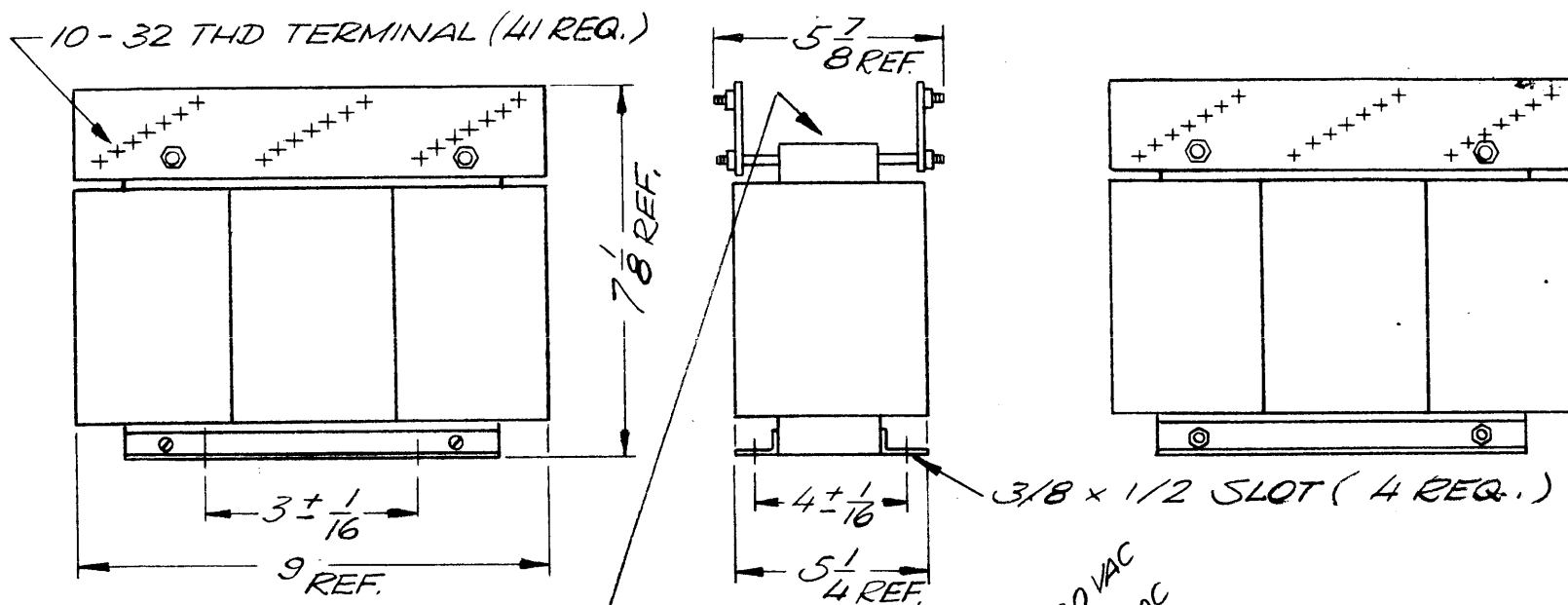
TRANSFORMER, FILAMENT

NOTICE TO PERSONS RECEIVING THIS DRAWING
 THE TECHNICAL MATERIEL CORPORATION claims proprietary right in the material
 disclosed hereon. This drawing is issued in confidence for engineering information only
 and may not be reproduced or used to manufacture anything shown hereon without
 permission from THE TECHNICAL MATERIEL CORPORATION to the user. This drawing is
 loaned for mutual assistance and is subject to recall at any time.

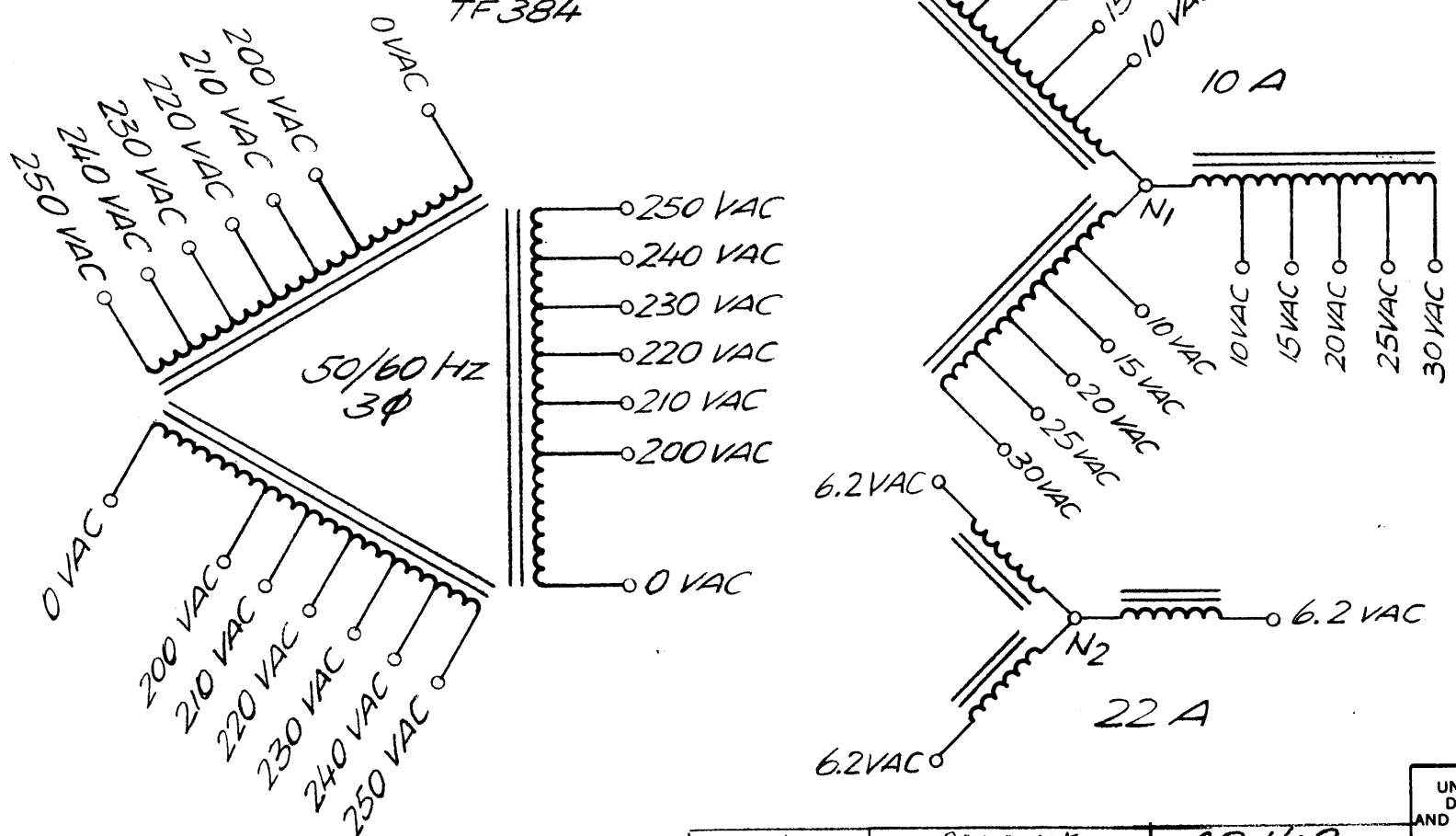
MATERIAL
 FINISH

| | | | |
|------|-----------------|---------|-------|
| SIZE | CODE IDENT. NO. | DWG NO. | ISSUE |
| B | 82679 | TF 383 | A |

SCALE SHEET OF



THE TECHNICAL MATERIEL CORP.
MAMARONECK NEW YORK
TF 384



ELECT. SPECS.

PRIMARY WINDING
VOLTAGE - 200 - 250 VAC
FREQUENCY - 50/60 HZ
PHASE - 3
SECONDARY WINDING # 1
VOLTAGE - 10 - 30 VAC
CURRENT - 10 AAC
SECONDARY WINDING # 2
VOLTAGE - 6.2 VAC
CURRENT - 22 AAC
INSULATION TEST - 1500 V RMS

MECH. SPECS

CASE - OPEN FRAME
FINISH - BLACK MATT EXCEPT TERMINALS
DIMENSIONS - SHOWN PICTORIALY
TERMINALS - 10 - 32 THREADS

STAMPING

ACCORDING TO TMC SPEC. S-727 WHITE
GOTHIC LETTERING AND LINE WORK.
SCHEMATIC TO BE PLACED AS SHOWN.

NOTE: MANUFACTURED IN ACCORDANCE WITH MIL-SPEC T-27-A EXCEPT THAT MIL-SPEC T-27-A SHALL NOT APPEAR ON THE CASE AND QUALIFICAT. TESTING IS NOT REQUIRED

| REVISIONS | | | | | | |
|-----------|-----|------------------|---------|----------|-------|------|
| ZONE | LTR | DESCRIPTION | DATE | E.M.N.NO | DRAFT | CHKD |
| | X | EXP. RELEASE | 1/8/70 | | | |
| | Ø | ORIGINAL RELEASE | 12/1/70 | | | KD |

| REQ'D | ITEM | PART NUMBER | DESCRIPTION | SYM. |
|--|-----------------|-------------|-------------|------|
| LIST OF MATERIAL | | | | |
| THE TECHNICAL MATERIEL CORP. MAMARONECK, NEW YORK | | | | |
| TRANSFORMER, POWER | | | | |
| SIZE | CODE IDENT. NO. | DWG NO. | ISSUE | |
| B | 82679 | TF 384 | Ø | |
| SCALE | | | SHEET OF | |

| | | |
|-------------|---------------|----------------|
| 1 | PALA-10K | AP 148 |
| QTY / UNIT | MODEL USED ON | ASS'Y NO. |
| APPLICATION | | |
| | CODE | S401-30 (8549) |

NOTICE TO PERSONS RECEIVING THIS DRAWING
THE TECHNICAL MATERIEL CORPORATION claims proprietary right in the material disclosed hereon. This drawing is issued in confidence for engineering information only and may not be reproduced or used to manufacture anything shown hereon without permission from THE TECHNICAL MATERIEL CORPORATION to the user. This drawing is loaned for mutual assistance and is subject to recall at any time.

| | |
|---|--|
| UNLESS OTHERWISE SPECIFIED DIMENSIONS ARE IN INCHES AND INCLUDE CHEMICALLY APPLIED OR PLATED FINISHES | |
| DECIMALS .X ± .05 .XX ± .01 .XXX ± .005 | FRACTIONS 1/64 TOLS. ANGLES 0° - 30' |
| MATERIAL | |
| FINISH | |

| | |
|--------------------|--------|
| FINAL APPROVAL | DATE |
| <i>[Signature]</i> | 1-8-70 |
| MECH. DES. | DATE |
| | |
| ELECT. DES. | DATE |
| <i>[Signature]</i> | 1-8-70 |
| CHECKED | DATE |
| <i>[Signature]</i> | 1/8/70 |
| DRAWN | DATE |
| <i>[Signature]</i> | 1/8/70 |

5

4

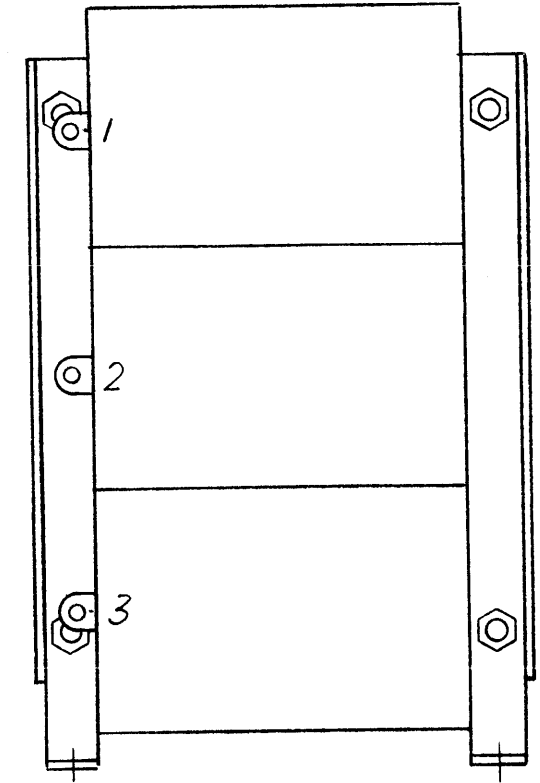
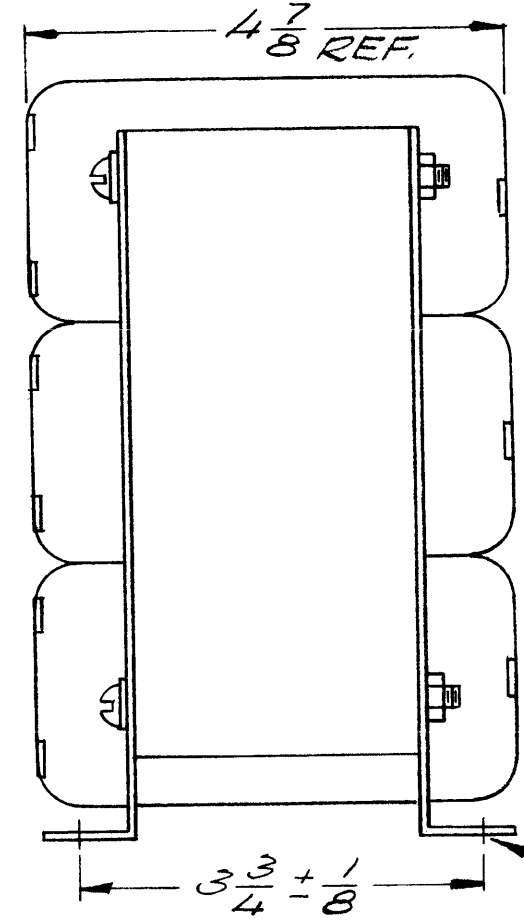
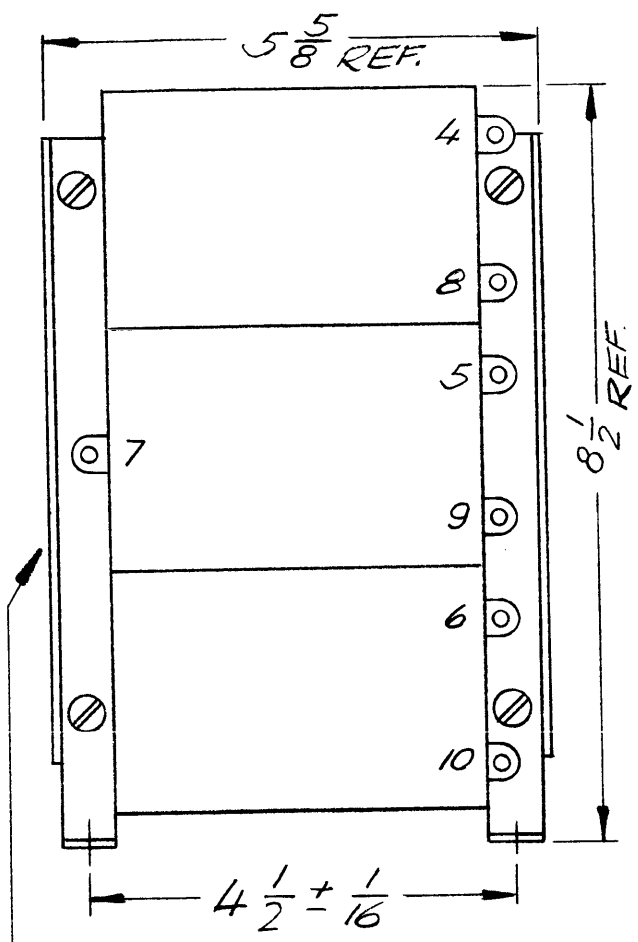
3

2

1

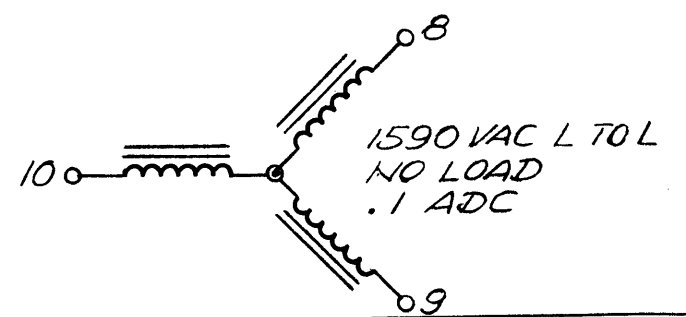
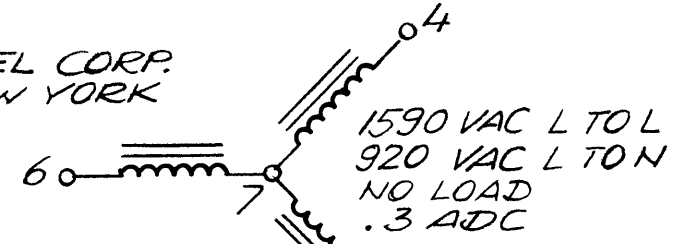
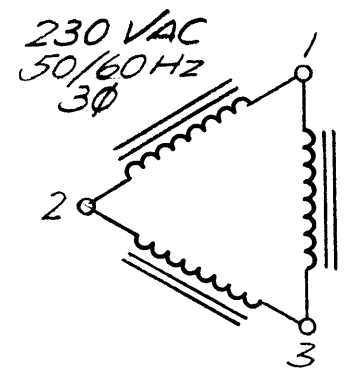
REVISIONS

| ZONE | LTR | DESCRIPTION | DATE | E.M.N.NO | DRAFT | CHKD | APPD |
|------|-----|------------------|---------|----------|-------|------|------|
| | X | EXP. RELEASE | | | | | |
| | Ø | ORIGINAL RELEASE | 1/4/70 | | W | | |
| | A | 4 1/2 WAS 3 3/4 | 6-28-72 | 20768 | GE | EF | EF |



9/32 x 13/32 SLOT (4 REQ.)

THE TECHNICAL MATERIEL CORP.
MAMARONECK NEW YORK
TF386



ELECT. SPECS

PRIMARY WINDING
 VOLTAGE: 230 VAC
 FREQUENCY: 50/60 HZ
 PHASE: 3
 SECONDARY WINDING #1
 VOLTAGE: 1590 VAC LINE TO LINE } NO LOAD
 920 VAC LINE TO NEUTRAL }
 CURRENT: .3 ADC
 SECONDARY WINDING #2
 VOLTAGE: 1590 VAC LINE TO LINE
 CURRENT: .1 ADC
 INSULATION TEST: PRIMARY 1500 VRMS
 SECONDARY 4500 VRMS

MECH. SPECS

CASE: OPEN FRAME
 FINISH: BLACK MATT EXCEPT TERMINALS
 DIMENSIONS: SHOWN PICTORIALLY
 TERMINALS: SOLDER LUG
 STAMPING:
 ACCORDING TO TMC SPEC. S 727 WHITE
 GOTHIC LETTERING AND LINE WORK.
 SCHEMATIC TO BE PLACED AS SHOWN.

NOTE:

MANUFACTURED IN ACCORDANCE WITH MIL - SPEC. T-27-A EXCEPT THAT MIL - SPEC. T-27-A SHALL NOT APPEAR ON THE CASE AND QUALIFICATION TESTING IS NOT REQUIRED.

| 1 | HFL () 10K | AP 148 |
|------------|---------------|-----------|
| 1 | PALA-10K | AP 148 |
| QTY / UNIT | MODEL USED ON | ASS'Y NO. |

APPLICATION

CODE S401-30(8739)

NOTICE TO PERSONS RECEIVING THIS DRAWING
 THE TECHNICAL MATERIEL CORPORATION claims proprietary right in the material disclosed hereon. This drawing is issued in confidence for engineering information only and may not be reproduced or used to manufacture anything shown hereon without permission from THE TECHNICAL MATERIEL CORPORATION to the user. This drawing is loaned for mutual assistance and is subject to recall at any time.

UNLESS OTHERWISE SPECIFIED DIMENSIONS ARE IN INCHES AND INCLUDE CHEMICALLY APPLIED OR PLATED FINISHES

| | |
|-------------|--------------|
| DECIMALS | FRACTIONS |
| .X ± .05 | 1/64 |
| .XX ± .01 | TOLS. ANGLES |
| .XXX ± .005 | 0° -30' |

MATERIAL

FINISH

| REQ'D | ITEM | PART NUMBER | DESCRIPTION | SYM. |
|-----------------------------|-----------------|-------------|--|------|
| F. BUDETTI LIST OF MATERIAL | | | | |
| FINAL APPROVAL | | DATE | THE TECHNICAL MATERIEL CORP. MAMARONECK, NEW YORK | |
| MECH. DES. | | DATE | TRANSFORMER, POWER | |
| ELECT. DES. | | DATE | TRANSFORMER, POWER | |
| CHECKED | | DATE | TRANSFORMER, POWER | |
| DRAWN | | DATE | TRANSFORMER, POWER | |
| SIZE | CODE IDENT. NO. | DWG NO. | ISSUE | |
| B | 82679 | TF386 | A | |
| SCALE | | | SHEET OF | |