

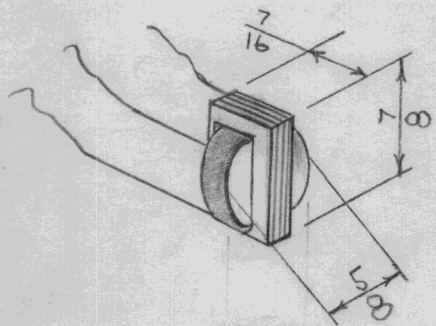
IF IT IS FOUND DESIRABLE TO CHANGE ANY TOLERANCE OR OTHER DETAIL SPECIFIED ON THIS DRAWING NOTIFY THE PURCHASER PROMPTLY.

RELEASED

TF-107

MAXIMUM ALLOWABLE TOLERANCES HAVE BEEN DETERMINED AND DEVIATIONS WILL BE CAUSE FOR REJECTION. REMOVE ALL BURRS AND SHARP EDGES

Quan Req.	USED ON			
	MODEL	PROJECT NO.	ASS'Y. NO.	DATE
2	AMD-1	144	A-205	10-23-52
2	AMD-2			



REF. DIMENSIONS

LEVEL = +4 V.U.

PRI. IMP. = 200 Ω , 50 Ω

D.C. IN PRI. = 0

SEC. IMP. = 250,000 Ω , 62,500 Ω

PRI. RES. = 13.5 Ω

SEC. RES. = 3700 Ω

REF. UNITED TRANSFORMER CO., TYPE 230-1

REQ.	ITEM	PART NO.	DESCRIPTION	SYMBOL
			THE TECHNICAL MATERIEL CORP.	
		STOCK SIZE	MAMARONECK. NEW YORK	
			TRANSFORMER - INPUT	
		MATERIAL		
		WEIGHT PER PC.		
		TYPE & TEMPER	WOL	G.T.O
			DRAWN	ELEC. DES. APP. MECH. DES. APP.
		HEAT TREAT. SPEC.	P.L. K. 12-4-52	
			CHECKED	FINAL APPROVAL
		FINISH & SPEC. NO.		TF-107

ISSUE ITEM CHANGED FROM DATE CN. NO. DRAFTS CHECKER ENG. APP.

TOLERANCES

SCALE S 401-29 (SS01)

ALL OTHERS DEC. DIM. \pm
FRAC. DIM. \pm
ANGULAR DIM. \pm

DRILL, PUNCH, COMMERCIAL STOCK SIZES AND MANUFACTURERS TOLERANCES ARE NOT INCLUDED.

C

STANDARD DRAWING

IF IT IS FOUND DESIRABLE TO CHANGE ANY TOLERANCE OR OTHER DETAIL SPECIFIED ON THIS DRAWING NOTIFY THE PURCHASER PROMPTLY.

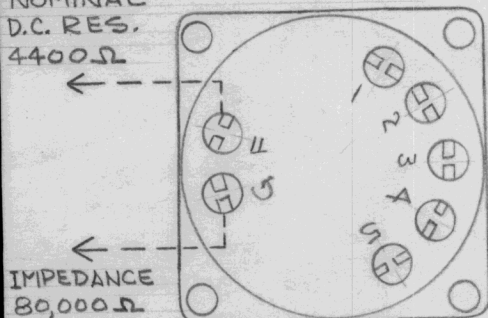
MAXIMUM ALLOWABLE TOLERANCES HAVE BEEN DETERMINED AND DEVIATIONS WILL BE CAUSE FOR REJECTION. REMOVE ALL BURRS AND SHARP EDGES

TF-112 C

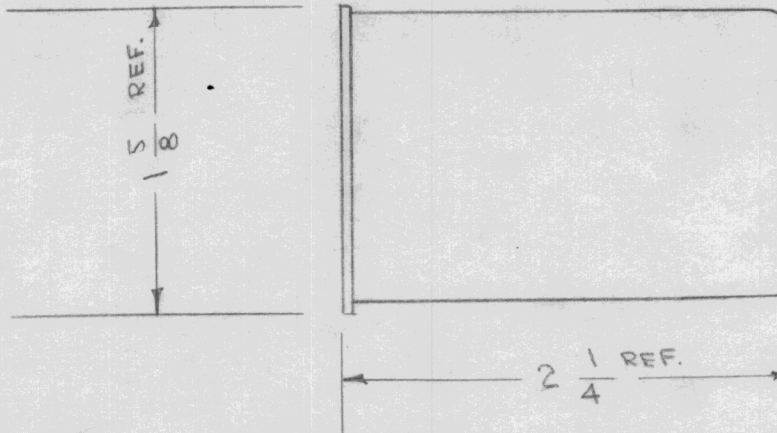
USED ON

MODEL	PROJECT NO.	ASS'Y. NO.	DATE
CFA			
RSC-1	170		10-5-53
VCT			

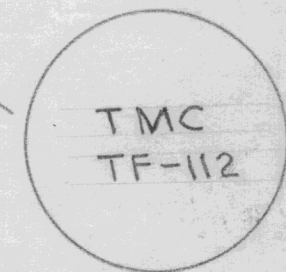
SECONDARY NOMINAL D.C. RES. 4400Ω



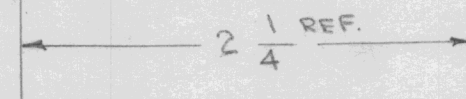
IMPEDANCE 80,000Ω



APPLICATION - LINE TO ONE GRID HUMBUCKING.
PRI. IMP. - 50, 200, 500 Ω
SEC. IMP. - 80,000 Ω
CASE - RC 50

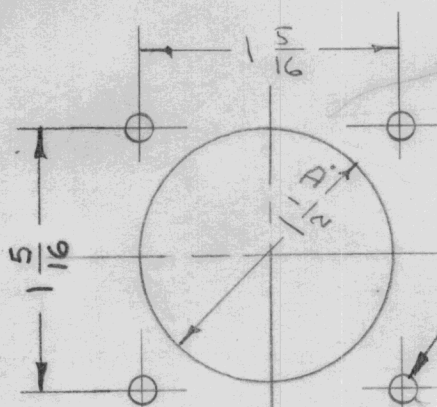


STAMP TOP AS SHOWN LETTERING 1/8 HIGH



Pri. IMP.	Terminals	Jumper 3-4	Nom. D.C. Res.
50Ω	4#5 or 2#3	NO	6.7Ω
200Ω	2#5	YES	13.4Ω
500Ω	1#5	YES	22.4Ω

DRILLING PLAN



9/64 (.140) D. 4 REQD

REF. UNITED TRANS. CO. PART NO. CG-134

REQ.	ITEM	PART NO.	DESCRIPTION	SYMBOL
		#	THE TECHNICAL MATERIEL CORP. MAMARONECK, NEW YORK	
		STOCK SIZE		
		#	TRANSFORMER, AUDIO	
		MATERIAL		
		WEIGHT PER PC.		
		#		
		TYPE & TEMPER	CDD. 10-5-53	G.T.O.
		#		
		HEAT TREAT. SPEC.	DRAWN	ELEC. DES. APP. MECH. DES. APP.
		#	CHECKED	FINAL APPROVAL
		FINISH & SPEC. NO.		

ISSUE	ITEM	CHANGED FROM	DATE	CN. NO.	DRAFTS	CHECKER	ENG. APP.
C		PRI. IMP WAS PRI TEMP	5/25/53	16284	C.H.		
B	2	SEC. & IMP ADDED TO PICTORIAL CHART ADDED	3-8-53	8480			
A	1	TMC NO ADDED	10/12/53	1			

TOLERANCES		SCALE
ALL OTHERS	DEC. DIM. ± FRAC. DIM. ± ANGULAR DIM. ±	5401-29 (CG-134)

DRILL, PUNCH, COMMERCIAL STOCK SIZES AND MANUFACTURERS TOLERANCES ARE NOT INCLUDED.

TF-112 C

IF IT IS FOUND DESIRABLE TO CHANGE ANY TOLERANCE OR OTHER DETAIL SPECIFIED ON THIS DRAWING NOTIFY THE PURCHASER PROMPTLY.

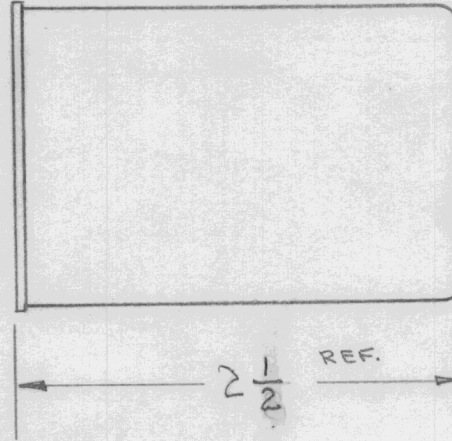
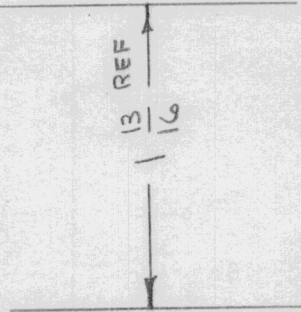
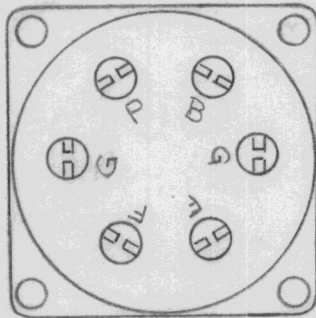
MAXIMUM ALLOWABLE TOLERANCES HAVE BEEN DETERMINED AND DEVIATIONS WILL BE CAUSE FOR REJECTION. REMOVE ALL BURRS AND SHARP EDGES

TF-113

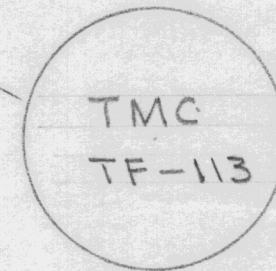
A

USED ON

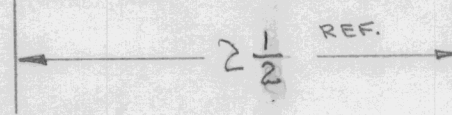
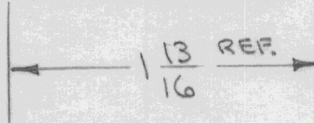
MODEL	PROJECT NO.	ASS'Y. NO.	DATE
LSP			
DCU			



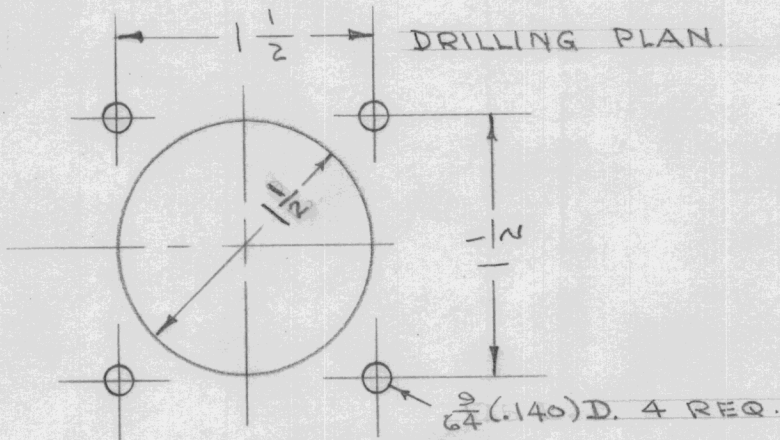
APPLICATION - 1 PLATE TO 2 GRIDS.
 PRI. IMP. - 15,000 Ω
 SEC. IMP. - 135,000 Ω CENTER-TAPPED. 3:1 RATIO OVERALL
 CASE NO. - RC-62.



STAMP TOP AS SHOWN
 LETTERING 1/8 HIGH



DRILLING PLAN



REF. UNITED TRANSFORMER CORP. CG-132

REQ.	ITEM	PART NO.	DESCRIPTION	SYMBOL
		#	THE TECHNICAL MATERIEL CORP. MAMARONECK, NEW YORK	
		STOCK SIZE	TRANSFORMER	
		MATERIAL	AUDIO	
		WEIGHT PER PC.		
		TYPE & TEMPER	C.D. 8-27-53	Ao Jo Jo
		HEAT TREAT. SPEC.	DRAWN	ELEC. DES. APP. MECH. DES. APP.
		FINISH & SPEC. NO.	CHECKED	FINAL APPROVAL
				TF-113 A

A	1	TMC NO Added	1/12/53	1	AAO	CDW	USE
ISSUE	ITEM	CHANGED FROM	DATE	CN. NO.	DRAFTS	CHECKER	ENG. APP.

TOLERANCES SCALE 5401-29 (CG-132)

ALL OTHERS DEC. DIM. ±
 FRAC. DIM. ±
 ANGULAR DIM. ±

C DRILL, PUNCH, COMMERCIAL STOCK SIZES AND MANUFACTURERS TOLERANCES ARE NOT INCLUDED.

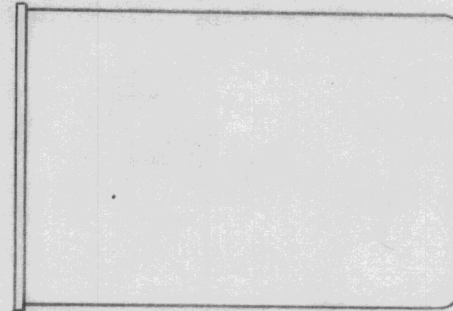
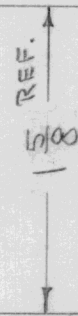
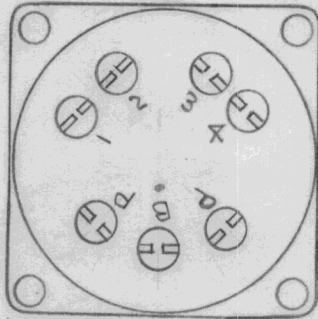
IF IT IS FOUND DESIRABLE TO CHANGE ANY TOLERANCE OR OTHER DETAIL SPECIFIED ON THIS DRAWING NOTIFY THE PURCHASER PROMPTLY.

TF-114 A

MAXIMUM ALLOWABLE TOLERANCES HAVE BEEN DETERMINED AND DEVIATIONS WILL BE CAUSE FOR REJECTION. REMOVE ALL BURRS AND SHARP EDGES

USED ON

MODEL	PROJECT NO.	ASS'Y. NO.	DATE
XFD-1	160	A-322	
DCU			

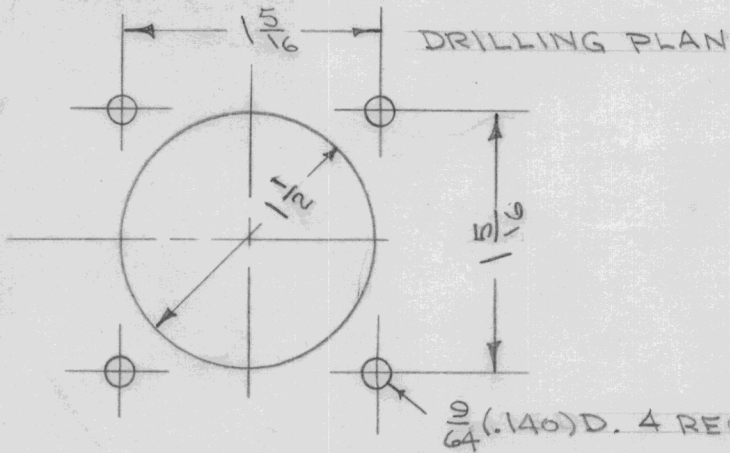


APPLICATION - PP TRIODE PLATES TO LINE.
 PRI. IMP. - 30,000 Ω P to P
 SEC. IMP. - 50 Ω, 200 Ω, 500 Ω
 CASE - RC-50

TMC
TF-114

STAMP TOP AS SHOWN
LETTERING 1/8 HIGH

REF. UNITED TRANSFORMER CORP. CG-141



REQ.	ITEM	PART NO.	DESCRIPTION	SYMBOL
		#	THE TECHNICAL MATERIEL CORP.	
		STOCK SIZE	MAMARONECK, NEW YORK	
		#	TRANSFORMER	
		MATERIAL		
		WEIGHT PER PC.		
		#		
		TYPE & TEMPER	C.D.D. 8-27-53	A ₀ J ₀ J ₀
		#	DRAWN	ELEC. DES. APP. MECH. DES. APP.
		#	HEAT TREAT. SPEC.	
		#	CHECKED	FINAL APPROVAL
		FINISH & SPEC. NO.	TF-114	A

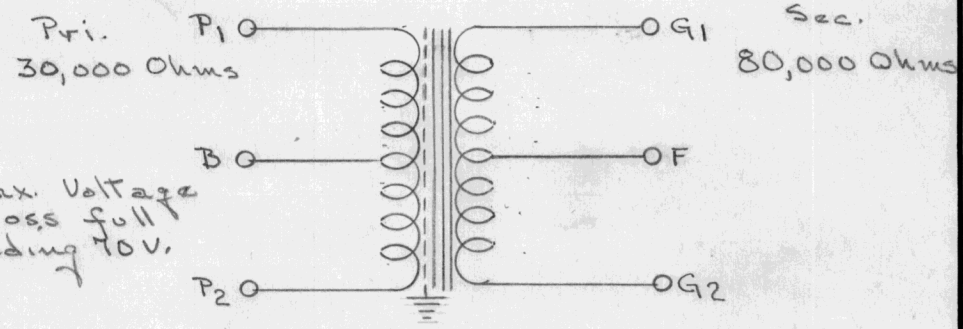
A	1	REDRAWN - SPECS. ADDED	8-27-53	1	C.D.D.	JALda	WDC
ISSUE	ITEM	CHANGED FROM	DATE	CN. NO.	DRAFTS	CHECKER	ENG. APP.

TOLERANCES		SCALE	5401-
ALL OTHERS	DEC. DIM. ± FRAC. DIM. ± ANGULAR DIM. ±	DRILL, PUNCH, COMMERCIAL STOCK SIZES AND MANUFACTURERS TOLERANCES ARE NOT INCLUDED.	

C

ISSUE	ITEM	CHANGED FROM	DATE	CN. NO.	DRAFTS	CHECKER	DES. APP.
A	1	ADDED SHIELD & NOTE	9/8/53	1	JG	JAL	WJ
B	2	TMC NO Added	10/12/53	2	JAL	EDS	WJ
C	3	TOL Added	11/1/54	3	JAL	EDS	WJ
D	4	6-32 Thd. Studs were 8-32 Topped Holes	4/7/58	4	JG	JAL	AM
E	1	NOTE ADDED (MIL-T-27-A)	5/30/60	2572	JAM	JAL	

Electrical Spec.



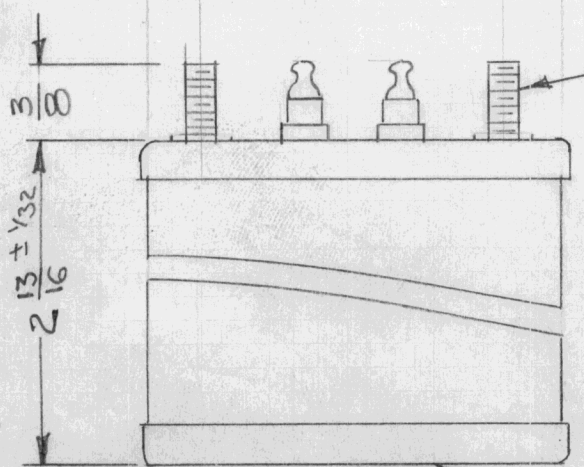
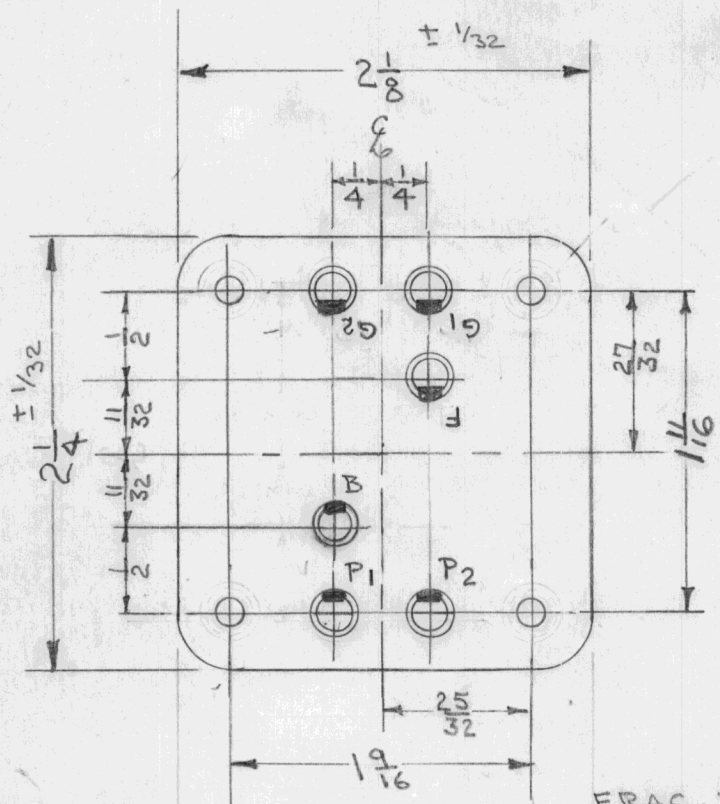
PRI. Unbalanced Current 8MA DC.
 Frequency Response 100-5000 cycles ± 1.5 DB INS. 1000 RMS Test.

FRAC. TOL $\pm 1/64$ Note:

Manufactured in Accordance with Spec. MIL-T-27, except that MIL Spec T-27-A shall not appear on case and Qualification testing is not required.
 Electrostatic Shield between Primary & Secondary

TMC
 TF-115

STAMP TOP AS SHOWN LETTERS 1/8 HIGH



6-32 Thds. Four Req.

DATE 9-17-51
 DRN. T. J. J. J.
 CHKD. J. J. J.
 APPD. J. J. J.

TRANSFORMER, AUDIO
 Supercedes AEM033 (TI-001)

THE TECHNICAL MATERIEL CORPORATION
 MAMARONECK, NEW YORK
 SHEET OF NO. TF-115E

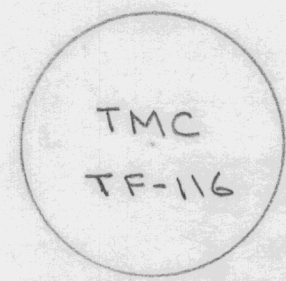
IF IT IS FOUND DESIRABLE TO CHANGE ANY TOLERANCE OR OTHER DETAIL SPECIFIED ON THIS DRAWING NOTIFY THE PURCHASER PROMPTLY.

TF-116

MAXIMUM ALLOWABLE TOLERANCES HAVE BEEN DETERMINED AND DEVIATIONS WILL BE CAUSE FOR REJECTION. REMOVE ALL BURRS AND SHARP EDGES

USED ON

MODEL	PROJECT NO.	ASS'Y. NO.	DATE
AMC-6			6-18-53



STAMP TOP AS SHOWN
LETTERING 1/8 HIGH

REQ.	ITEM	PART NO.	DESCRIPTION	SYMBOL
			THE TECHNICAL MATERIEL CORP.	
			MAMARONECK, NEW YORK	
STOCK SIZE			TRANSFORMER, POWER	
MATERIAL		WEIGHT PER PC.		
TYPE & TEMPER			SOLD	
DRAWN			ELEC. DES. APP.	MECH. DES. APP.
HEAT TREAT. SPEC.			CHECKED	FINAL APPROVAL
FINISH & SPEC. NO.			TF-116 A	

ISSUE	ITEM	CHANGED FROM	DATE	CN. NO.	DRAFTS	CHECKER	ENG. APP.
A							

TOLERANCES

DEC. DIM. \pm	C	DRILL, PUNCH, COMMERCIAL STOCK SIZES AND MANUFACTURERS TOLERANCES ARE NOT INCLUDED.
FRAC. DIM. \pm		
ANGULAR DIM. \pm		

SCALE S401-158(32929)

IF IT IS FOUND DESIRABLE TO CHANGE ANY TOLERANCE OR OTHER DETAIL SPECIFIED ON THIS DRAWING NOTIFY THE PURCHASER PROMPTLY.

TF-120 | A

MAXIMUM ALLOWABLE TOLERANCES HAVE BEEN DETERMINED AND DEVIATIONS WILL BE CAUSE FOR REJECTION. REMOVE ALL BURRS AND SHARP EDGES

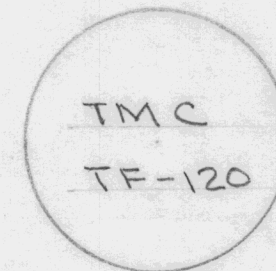
USED ON

MODEL

PROJECT NO.

ASS'Y. NO.

DATE



STAMP TOP AS SHOWN
LETTERING 1/8 HIGH

948C

REQ.	ITEM	PART NO.	DESCRIPTION	SYMBOL
			THE TECHNICAL MATERIEL CORP.	
			MAMARONECK, NEW YORK	
STOCK SIZE				
			Reactor, filter	
MATERIAL		WEIGHT PER PC.		
TYPE & TEMPER				
			DRAWN	ELEC. DES. APP. MECH. DES. APP.
HEAT TREAT. SPEC.			CHECKED	FINAL APPROVAL
FINISH & SPEC. NO.				TF-120 A

ISSUE	ITEM	CHANGED FROM	DATE	CN. NO.	DRAFTS	CHECKER	ENG. APP.
A	1		1/12/51				

TOLERANCES		SCALE
ALL OTHERS	DEC. DIM. ± FRAC. DIM. ± ANGULAR DIM. ±	5001-29 (CG-48C)
		DRILL, PUNCH, COMMERCIAL STOCK SIZES AND MANUFACTURERS TOLERANCES ARE NOT INCLUDED.

C

IF IT IS FOUND DESIRABLE TO CHANGE ANY TOLERANCE OR OTHER DETAIL SPECIFIED ON THIS DRAWING NOTIFY THE PURCHASER PROMPTLY.

TF-121

B

MAXIMUM ALLOWABLE TOLERANCES HAVE BEEN DETERMINED AND DEVIATIONS WILL BE CAUSE FOR REJECTION. REMOVE ALL BURRS AND SHARP EDGES

USED ON

MODEL

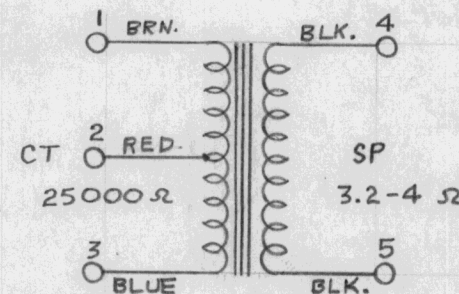
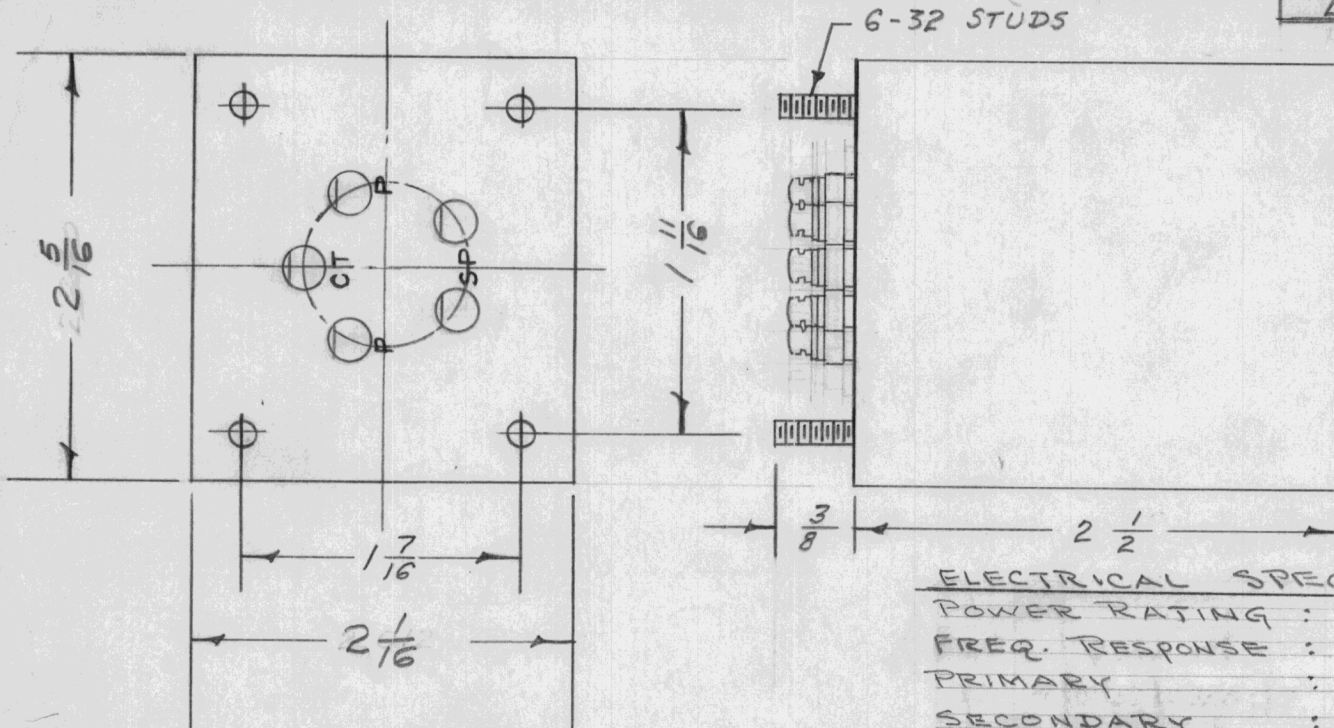
PROJECT NO.

ASS'Y. NO.

DATE

LSP

1-6-54



ELECTRICAL SPECIFICATIONS:

POWER RATING : 3W
 FREQ. RESPONSE : 100 TO 10,000 CPS
 PRIMARY : 12,000 TO 25,000 Ω CT
 SECONDARY : 3.2 TO 4 Ω
 PRIMARY CURRENT : 8MA DC MAX.

MECHANICAL SPECIFICATIONS:

1. CASE - ALUMINUM.
2. TERMINALS - CERAMIC
3. FILLER - COMPOUND
4. FINISH - GREY
5. STUDS - 6-32 X 3/8

REQ.	ITEM	PART NO.	DESCRIPTION	SYMBOL
			THE TECHNICAL MATERIEL CORP.	
			MAMARONECK, NEW YORK	
			TRANSFORMER, OUTPUT	
			TF-121	
			6-1-6-54	G.T.O
			DRAWN	ELEC. DES. APP. MECH. DES. APP.
			CHECKED	FINAL APPROVAL
				TF-121 B

B	1	DIM. CHANGED FROM 2.012 X 2.240 TO 2-1/16 X 2-5/16 AS PER BX-108	1/9/58	2	16	HAR	ONE
A	1	ELEC. SPECS Added	11/2/54	1		HAR	G.T.O
ISSUE	ITEM	CHANGED FROM	DATE	CN. NO.	DRAFTS	CHECKER	ENG. APP.

TOLERANCES

SCALE 4A-391

ALL OTHERS
 DEC. DIM. ±
 FRAC. DIM. ±
 ANGULAR DIM. ±

A

DRILL, PUNCH, COMMERCIAL STOCK SIZES AND MANUFACTURERS TOLERANCES ARE NOT INCLUDED.

IF IT IS FOUND DESIRABLE TO CHANGE ANY TOLERANCE OR OTHER DETAIL SPECIFIED ON THIS DRAWING NOTIFY THE PURCHASER PROMPTLY.

STANDARD DRAWING

TF 122 | B

MAXIMUM ALLOWABLE TOLERANCES HAVE BEEN DETERMINED AND DEVIATIONS WILL BE CAUSE FOR REJECTION. REMOVE ALL BURRS AND SHARP EDGES

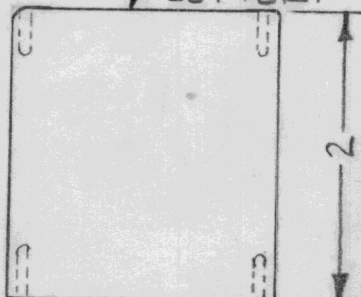
USED ON

MODEL	PROJECT NO.	ASS'Y. NO.	DATE
RSA	170		6/18/53

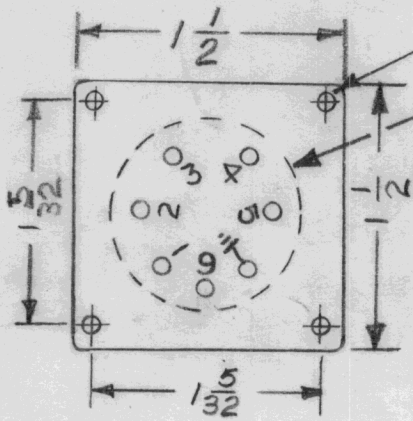
STAMP TMC PART NUMBER 1/8" HIGH BLACK GOTHIC W/LATEST REV. LETTER.

SPECIFICATIONS

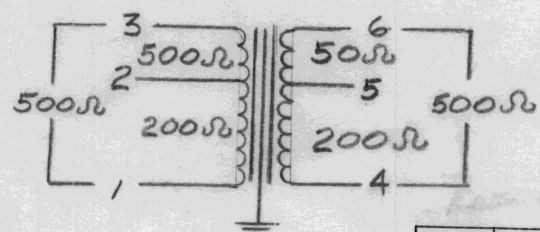
PRIMARY IMPEDANCE: 50,200-250,500-600Ω
 PRIMARY RESISTANCE: 28Ω
 MAX. LEVEL: +15DBM or 30MW
 UNBALANCED D.C.: ZERO
 SECONDARY IMPEDANCE: 50,200-250, 500-600Ω
 FREQUENCY RESPONSE: ±2DB 30-30KC
 SHIELDING: ELECTROSTATIC
 TERMINALS: STYLE-OPTIONAL, QUANTITY-7
 HIPOT: 500VDC



SEE TERMINAL SPECIFICATIONS



4-40x¹⁵/₆₄ DEEP MIN. (8 PLACES).
 1/8 DIA. MAX. CLEARANCE.



STAMP TOP AS SHOWN
 SHIELDING 1/8" HIGH

REQ.	ITEM	PART NO.	DESCRIPTION	SYMBOL
			THE TECHNICAL MATERIEL CORP. MAMARONECK, NEW YORK	
STOCK SIZE			TRANSFORMER, AUDIO	
MATERIAL		WEIGHT PER PC.		
TYPE & TEMPER			ELEC. DES. APP. MECH. DES. APP.	
HEAT TREAT. SPEC.			CHECKED FINAL APPROVAL	
FINISH & SPEC. NO.			TF 122 B	

B	1	REVISED COMPLETELY	10/6/53	14905	REV.	JRS	P
ISSUE	ITEM	CHANGED FROM	DATE	CN. NO.	DRAFTS	CHECKER	ENG. APP.

TOLERANCES
 SCALE 5401-29(A-21)
 ALL OTHERS DEC. DIM. ±
 FRAC. DIM. ±
 ANGULAR DIM. ±
 DRILL, PUNCH, COMMERCIAL STOCK SIZES AND MANUFACTURERS TOLERANCES ARE NOT INCLUDED.

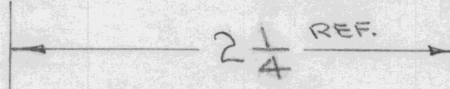
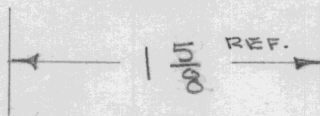
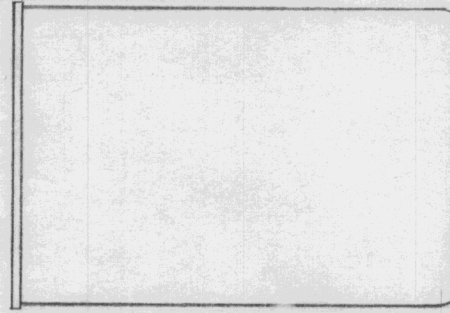
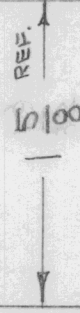
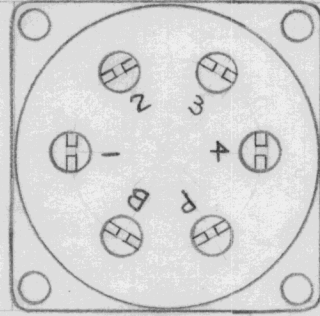
IF IT IS FOUND DESIRABLE TO CHANGE ANY TOLERANCE OR OTHER DETAIL SPECIFIED ON THIS DRAWING NOTIFY THE PURCHASER PROMPTLY.

TF-125 A

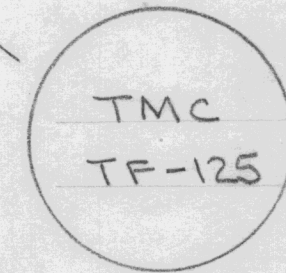
MAXIMUM ALLOWABLE TOLERANCES HAVE BEEN DETERMINED AND DEVIATIONS WILL BE CAUSE FOR REJECTION. REMOVE ALL BURRS AND SHARP EDGES

USED ON

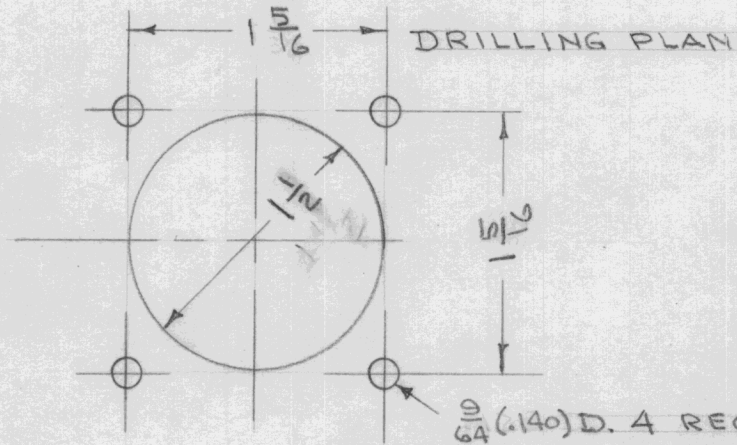
MODEL	PROJECT NO.	ASS'Y. NO.	DATE



APPLICATION - TRIODE PLATE TO LINE
 PRI. IMP. - 15,000 Ω
 SEC. IMP. - 50, 200, 500 Ω
 CASE NO. - RC-50



STAMP TOP AS SHOWN
 LETTERING 1/8 HIGH



REQ.	ITEM	PART NO.	DESCRIPTION	SYMBOL
	#		THE TECHNICAL MATERIEL CORP.	
		STOCK SIZE	MAMARONECK, NEW YORK	
	#	#	TRANSFORMER	
		MATERIAL		
		WEIGHT PER PC.		
		TYPE & TEMPER	C.D.D. 8-27-53	Ao Jo Jo
			DRAWN	ELEC. DES. APP. MECH. DES. APP.
		HEAT TREAT. SPEC.	JADe	Ao Jo Jo
			CHECKED	FINAL APPROVAL
		FINISH & SPEC. NO.		TF-125 A

A	1	TMC NO Added	10/14/53	1	JADe	CDD	WSD
ISSUE	ITEM	CHANGED FROM	DATE	CN. NO.	DRAFTS	CHECKER	ENG. APP.

TOLERANCES		SCALE	S401-29 (CG-140)
ALL OTHERS	DEC. DIM. ± FRAC. DIM. ± ANGULAR DIM. ±	C	DRILL, PUNCH, COMMERCIAL STOCK SIZES AND MANUFACTURERS TOLERANCES ARE NOT INCLUDED.

IF IT IS FOUND DESIRABLE TO CHANGE ANY TOLERANCE OR OTHER DETAIL SPECIFIED ON THIS DRAWING NOTIFY THE PURCHASER PROMPTLY.

TF-128

MAXIMUM ALLOWABLE TOLERANCES HAVE BEEN DETERMINED AND DEVIATIONS WILL BE CAUSE FOR REJECTION. REMOVE ALL BURRS AND SHARP EDGES

USED ON

MODEL

PROJECT NO.

ASS'Y. NO.

DATE

DMK-4

9/4/53

TMC
TF-128

STAMP TOP AS SHOWN
LETTERING 1/8 HIGH

REQ.	ITEM	PART NO.	DESCRIPTION	SYMBOL
			THE TECHNICAL MATERIEL CORP. MAMARONECK, NEW YORK	
		STOCK SIZE	Transformer, power	
		MATERIAL		
		WEIGHT PER PC.		
		TYPE & TEMPER		
			DRAWN	ELEC. DES. APP. MECH. DES. APP.
		HEAT TREAT. SPEC.	CHECKED	FINAL APPROVAL
		FINISH & SPEC. NO.		TF-128

ISSUE ITEM CHANGED FROM DATE CN. NO. DRAFTS CHECKER ENG. APP.

TOLERANCES SCALE 5401-12 (31029-2)

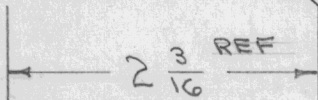
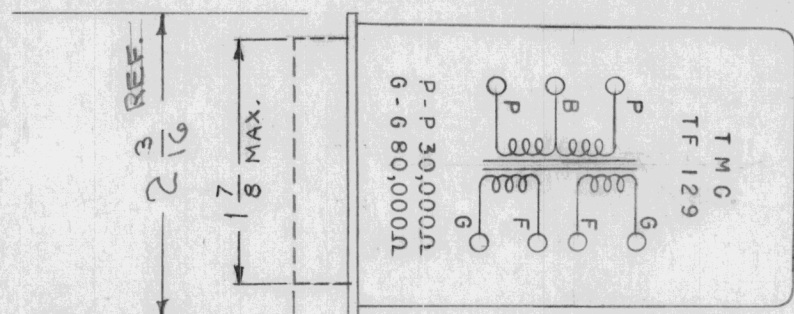
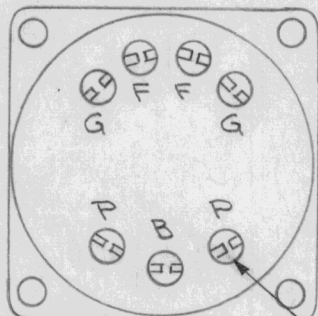
ALL OTHERS DEC. DIM. ±
FRAC. DIM. ±
ANGULAR DIM. ±
C DRILL, PUNCH, COMMERCIAL STOCK SIZES AND MANUFACTURERS TOLERANCES ARE NOT INCLUDED.

IF IT IS FOUND DESIRABLE TO CHANGE ANY TOLERANCE OR OTHER DETAIL SPECIFIED ON THIS DRAWING NOTIFY THE PURCHASER PROMPTLY.

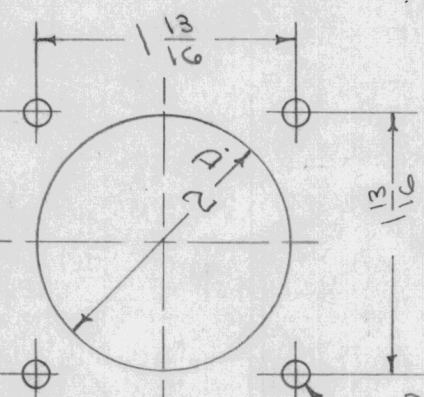
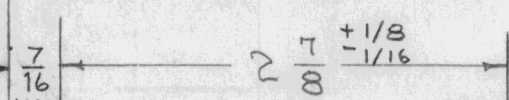
TF 129 D

MAXIMUM ALLOWABLE TOLERANCES HAVE BEEN DETERMINED AND DEVIATIONS WILL BE CAUSE FOR REJECTION.
REMOVE ALL BURRS AND SHARP EDGES

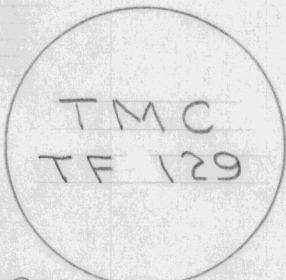
REQ. PER UNIT	USED ON			
	MODEL	PROJECT NO.	ASS'Y. NO.	DATE
3	RSD-1	170		10-5-53



TERM. STYLE OPTIONAL

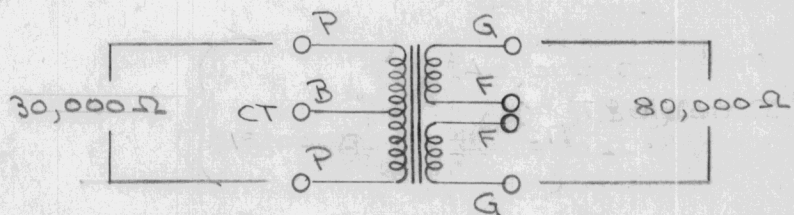


STAMP TOP OF CAN AS SHOWN
YB HIGH
BLACK GOTHIC



STAMP SCHEMATIC DIAGRAM ON SIDE OF CAN AS SHOWN ABOVE.

APPLICATION - 2 PLATES TO 2 GRIDS
PRI. IMP. - 30,000 Ω P TO P
SEC. IMP. - 80,000 Ω OVERALL
1.6 TO 1 RATIO OVERALL
D.C. RATING -
15 MA PRIMARY (EA. SIDE BAL.)
SECONDARY - NONE
MAX. AUDIO OPER. LEVEL - +32 dBm
RATED OPER. FREQ. -
40 - 10,000 CPS
RATED DB. VARIATION OVER RANGE -
± 1.5 DB



REF UNITED TRANS. CO. CAT. NO. 49-133

REQ.	ITEM	PART NO.	DESCRIPTION	SYMBOL
			THE TECHNICAL MATERIEL CORP.	
			MAMARONECK. NEW YORK	
			TRANSFORMER	
			AUDIO FREQUENCY	
			TYPE & TEMPER	
			DRAWN	
			ELEC. DES. APP.	
			MECH. DES. APP.	
			CHECKED	
			FINAL APPROVAL	
			TMC GRAY S115	
			FINISH & SPEC. NO.	
			TF 129	D

ISSUE	ITEM	CHANGED FROM	DATE	CN. NO.	DRAFTS	CHECKER	ENG. APP.
D		DWG UPDATED	12-13-60	17450	RME	CB	
C	1	SCHEMATIC ADDED TO CASE	10/24/56	3	COO	HW	A.J.J.
B	1	DC RATINGS ADDED SCHEMATIC ADDED	9/2/55	2	COO		A.J.J.

TOLERANCES		SCALE
ALL OTHERS	DEC. DIM. ± FRAC. DIM. ± ANGULAR DIM. ±	S401-29 (CG-133)
	C	DRILL, PUNCH, COMMERCIAL STOCK SIZES AND MANUFACTURERS TOLERANCES ARE NOT INCLUDED.

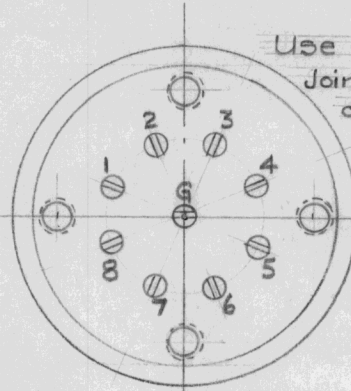
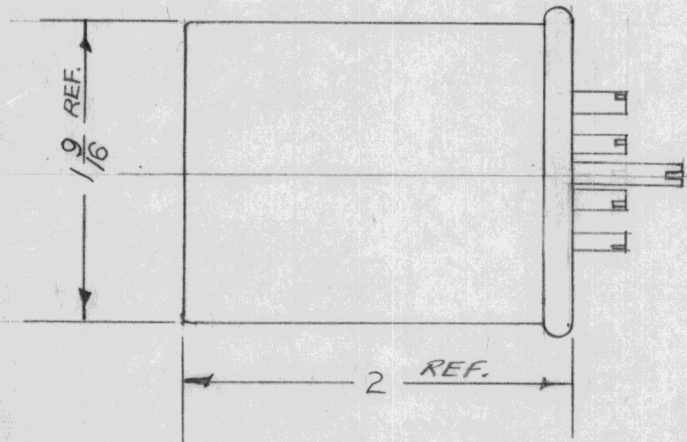
IF IT IS FOUND DESIRABLE TO CHANGE ANY TOLERANCE OR OTHER DETAIL SPECIFIED ON THIS DRAWING NOTIFY THE PURCHASER PROMPTLY.

TF-132 B

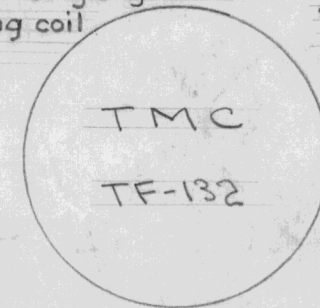
MAXIMUM ALLOWABLE TOLERANCES HAVE BEEN DETERMINED AND DEVIATIONS WILL BE CAUSE FOR REJECTION. REMOVE ALL BURRS AND SHARP EDGES

USED ON

MODEL	PROJECT NO.	ASS'Y. NO.	DATE
RSM-1	170		10-7-53

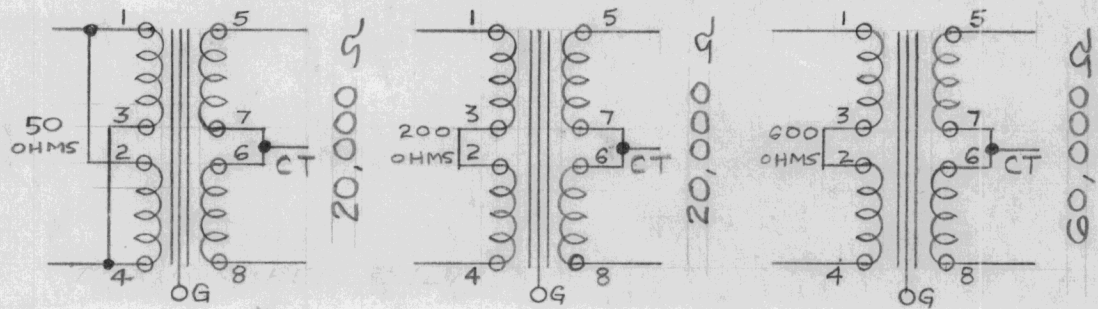
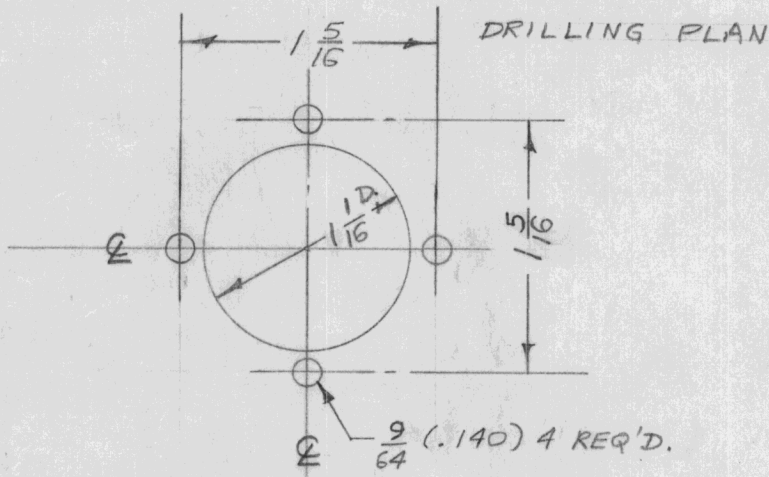


Use terminals 5-8 for single grid.
Join 6-7 hum bucking coil and core



STAMP TOP AS SHOWN. 1/8 HIGH BLACK.

Electrical Spec. Response: \pm 1db 20-2000 cps
Hum = 74 db
Max. Level + 19 dbm No D.C.



FOR THE TECHNICAL MATERIEL CORP. ELECT. MFG. DIV. AUSTIN, TEXAS

REQ.	ITEM	PART NO.	DESCRIPTION	SYMBOL
			THE TECHNICAL MATERIEL CORP. MAMARONECK. NEW YORK	
		STOCK SIZE	AUDIO, INPUT TRANSFORMER	
		MATERIAL	WEIGHT PER PC.	
			16 10-7-53	P.L.K. 10-7-53
		TYPE & TEMPER	DRAWN	ELEC. DES. APP. MECH. DES. APP.
			JAR	G.T.O.
		HEAT TREAT. SPEC.	CHECKED	FINAL APPROVAL
				TF-132 B
		FINISH & SPEC. NO.		

B	1	ELEC. SPEC. ADDED	7/9/57	2	SC. P.L.K.A.J.J.
A	1	TMC NO. ADDED	10/14/53	1	CD.D. V.G. J.C.
ISSUE	ITEM	CHANGED FROM	DATE	CN. NO.	DRAFTS CHECKER ENG. APP.

TOLERANCES

SCALE S401-156 T20A05

ALL OTHERS	DEC. DIM. \pm FRAC. DIM. \pm ANGULAR DIM. \pm	C	DRILL, PUNCH, COMMERCIAL STOCK SIZES AND MANUFACTURERS TOLERANCES ARE NOT INCLUDED.
------------	---	---	---

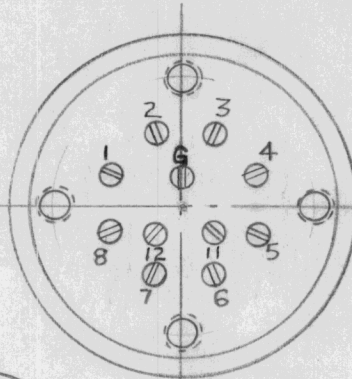
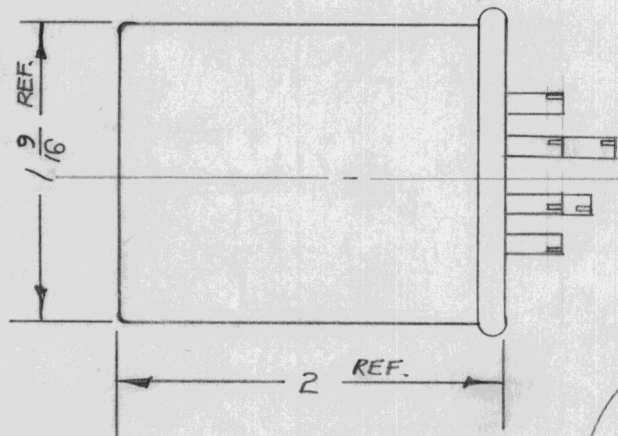
IF IT IS FOUND DESIRABLE TO CHANGE ANY TOLERANCE OR OTHER DETAIL SPECIFIED ON THIS DRAWING NOTIFY THE PURCHASER PROMPTLY.

TF-133 B

MAXIMUM ALLOWABLE TOLERANCES HAVE BEEN DETERMINED AND DEVIATIONS WILL BE CAUSE FOR REJECTION. REMOVE ALL BURRS AND SHARP EDGES

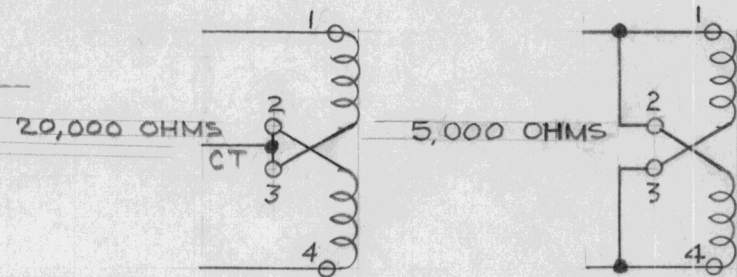
USED ON

MODEL	PROJECT NO.	ASS'Y. NO.	DATE
RSM-1	170		10-7-53

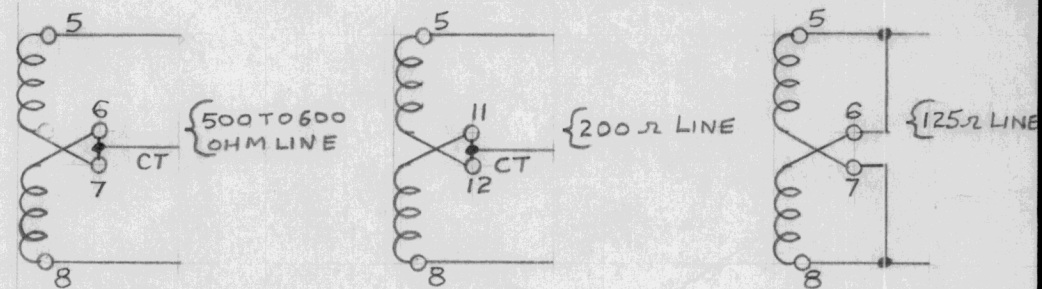


G = CORE & CASE

PRIMARY

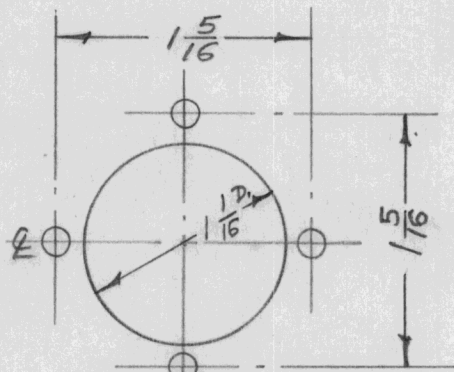


SECONDARY



TMC
TF-133

STAMP TOPAS SHOWN. 1/8 HIGH BLACK.



Elec. Spec. Response: ± 1 db 20-20,000 cps. 3 Watts output, 10 ma DC pri.

B	2	20,000 OHMS ADDED	7-19	2	SC P.L.K. ATT
	1	ELEC. SPEC. ADDED	57		
A	1	TMC No. ADDED	10-28	1	C.D.D 16 WSE

ISSUE	ITEM	CHANGED FROM	DATE	CN. NO.	DRAFTS	CHECKER	ENG. APP.
TOLERANCES		SCALE S401-156 (T22952)					
ALL OTHERS	DEC. DIM. \pm FRAC. DIM. \pm ANGULAR DIM. \pm	C		DRILL, PUNCH, COMMERCIAL STOCK SIZES AND MANUFACTURERS TOLERANCES ARE NOT INCLUDED.			

REQ.	ITEM	PART NO.	DESCRIPTION	SYMBOL
			THE TECHNICAL MATERIEL CORP. MAMARONECK. NEW YORK	
			AUDIO, OUTPUT TRANSFORMER	
			16 10-7-53	P.L.K. 10-7-53
			DRAWN	ELEC. DES. APP. MECH. DES. APP.
			CHECKED	FINAL APPROVAL
				TF-133 B

MULTIPLE LINE MATCHING TRANSFORMER SPECIFICATIONS:

(1) Physical:

The transformer must have the smallest case possible without undue sacrifice of electrical performance. As an example, A-10, UTC Maxing Transformer would be acceptable in regard to physical size:

Length 1 1/2", Width 1 1/2", Height 2".

The unit must be hermetically sealed.

The mounting arrangement must be with the terminals down.

(2) Electrical:

Primary Impedance is 600 ohms with the center tap.

Four secondary windings, 600 ohms Impedance each.

The unit is intended for operation without DC through the windings.

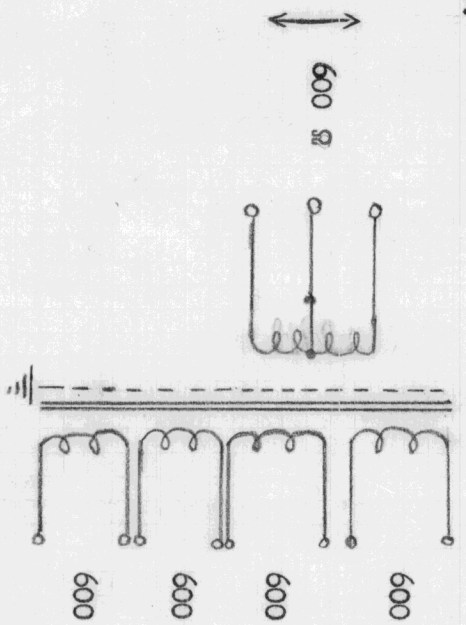
All windings will be properly terminated at all times.

The unit must possess an electro static shield between primary and secondary windings.

Frequency response: 50 - 6000 cps ± 2 db.

Maximum signal level +10 dbm.

Schematic:



All windings must be wound hum balancing; total unit should afford good shielding against inductive stray fields.
Case finish: Standard Gray.

A

DATE	March 3, 1954
DRN.	KZ
CHKD.	KZ
APPD.	A.J.J.

MULTIPLE LINE MATCHING TRANSFORMER SPECIFICATIONS

THE TECHNICAL MATERIEL CORPORATION
MAMARONECK, NEW YORK
SHEET 1 OF 1 NO. TF-135

IF IT IS FOUND DESIRABLE TO CHANGE ANY TOLERANCE OR OTHER DETAIL SPECIFIED ON THIS DRAWING NOTIFY THE PURCHASER PROMPTLY.

STANDARD DRAWING

TF-137

MAXIMUM ALLOWABLE TOLERANCES HAVE BEEN DETERMINED AND DEVIATIONS WILL BE CAUSE FOR REJECTION. REMOVE ALL BURRS AND SHARP EDGES

REQ. PER UNIT

USED ON

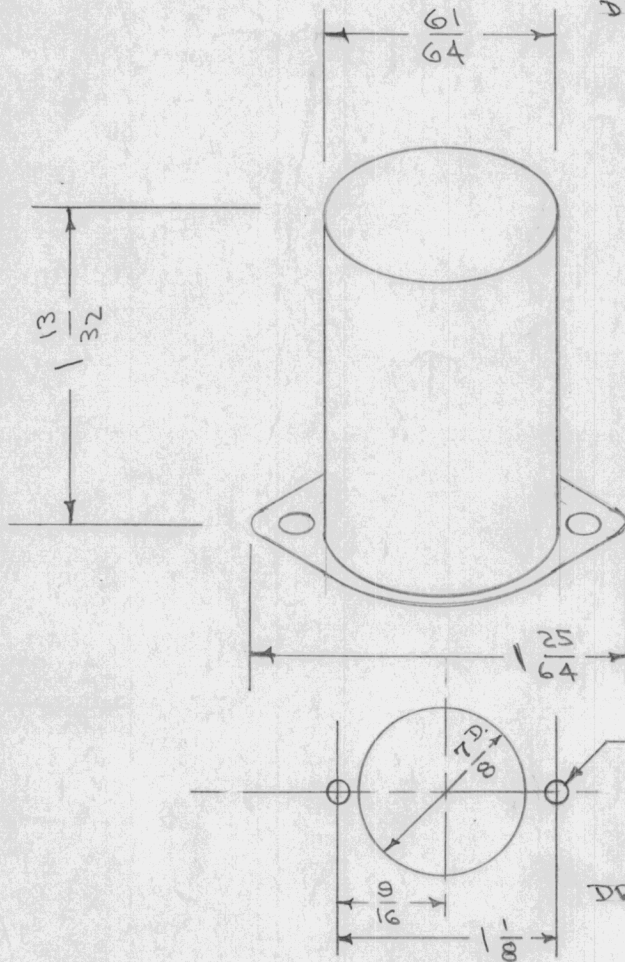
MODEL

PROJECT NO.

ASS'Y. NO.

DATE

DIM. FOR REF. ONLY



RECOMMENDED APPLICATION - MIKE, PICKUP, LINE TO GRID.
 MIL TYPE - TF1A10YY
 PRI. IMP. OHMS - 50, 200CT, 500CT*
 SEC. " " - 50,000
 DC IN PRI. MA - 0
 RESPONSE \pm 2db (CYC.) - 50 - 10,000
 MAX. LEVEL dbm - +5

* 200 Ω TERM. CAN BE USED FOR 150 Ω OR 250 Ω ,
 500 Ω TERM. CAN BE USED FOR 600 Ω

REF. UNITED TRANSFORMER CO.
 TYPE H-1, CASE RCOF (RC25)

REQ.	ITEM	PART NO.	DESCRIPTION	SYMBOL
			THE TECHNICAL MATERIEL CORP. MAMARONECK, NEW YORK	
		STOCK SIZE	TRANSFORMER, AUDIO	
		MATERIAL	P-0-2	
		WEIGHT PER PC.	CORR. 9/30/54	
		TYPE & TEMPER	KZ	WDE
		HEAT TREAT. SPEC.	DRAWN	ELEC. DES. APP. MECH. DES. APP.
		FINISH & SPEC. NO.	H.A.D.	A. J. J. WDE
			CHECKED	FINAL APPROVAL
				TF-137

ISSUE ITEM CHANGED FROM DATE CN. NO. DRAFTS CHECKER ENG. APP.

TOLERANCES

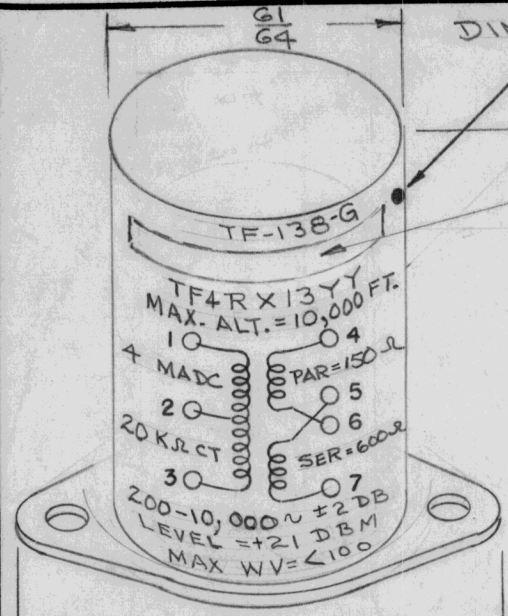
SCALE S401-29

ALL OTHERS

DEC. DIM. \pm
 FRAC. DIM. \pm
 ANGULAR DIM. \pm

C

DRILL, PUNCH, COMMERCIAL STOCK SIZES AND MANUFACTURERS TOLERANCES ARE NOT INCLUDED.



DIM. FOR REF. ONLY
YELLOW DOT TO INDICATE
"MU" METAL CASE.

STAMP MFGR PART & TYPE NO.
STAMP AS SHOWN
BLACK GOTHIC

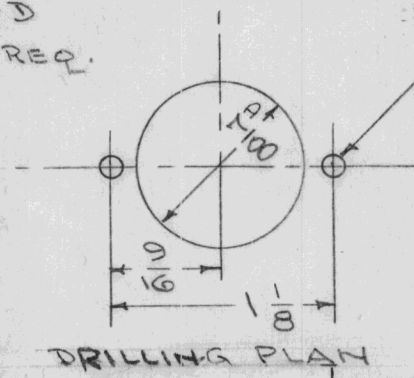
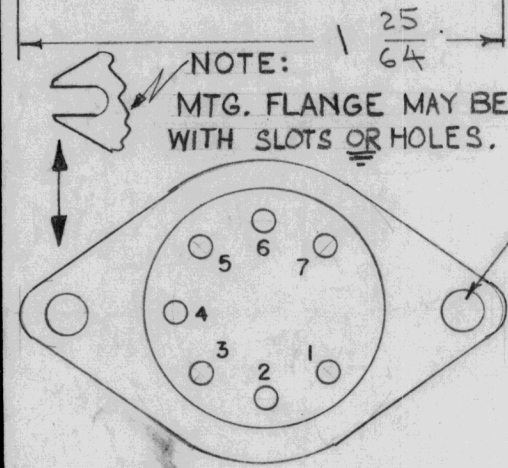
REQ. PER UNIT	USED ON			TF-138 G
	MODEL	ASS'Y. NO.	DATE	

STANDARD DRAWING

RECOMMENDED APPLICATION - SINGLE OR P.P. PLATES TO LINE.

MILITARY TYPE - TF4RX13YY
 PRI. IMP. OHMS - 20,000 C.T
 SEC. IMP. OHMS - 150/600 600 OVERALL
 DC IN PRI. MA - 4
 RESPONSE - ± 2db (CYC) - 200-10,000
 MAX. LEVEL dbm - +21
 RATIO OF TURNS OVERALL PRI. TO OVERALL SEC. - 5.78-1
 7 TERMINALS - SOLDER LUG TYPE
 FINISH - SMOOTH GREY ENAMEL (TMC SPEC S-115).
 CASE - MUST BE "MU" METAL, HERMETICALLY SEALED. COLOR CODE CASE WITH YELLOW DOT TO INDICATE "MU" METAL CASE.

NOTE:
MTG. FLANGE MAY BE WITH SLOTS OR HOLES.



1/8 (.125) D. 2 REQ.

REF. UNITED TRANSFORMER CO.
TYPE H 7 CASE TYPE RCOF

ISSUE	ITEM	CHANGED FROM	DATE	CH. NO.	DRAFTS	CHECKER	ENG. APP.	REQ.	ITEM	PART NO.	DESCRIPTION	SYMBOL					
E	1	ADDED CASE NOTE	5-3-62	4793							THE TECHNICAL MATERIEL CORP. MAMARONECK, NEW YORK TRANSFORMER, AUDIO						
D	1	TF4RX13YY WAS TF1RX13YY	9/2/60	3089													
C	1	STAMPING INFO ADDED	12/1/60	3													
G	1	TF4RX13YY WAS TF1RX13YY	12-5-62	7774													
TOLERANCES			SCALE: 5/401-29					TYPE & TEMPER		HEAT TREAT. SPEC.	DRAWN	CHECKED	FINAL APPROVAL				
DEC. DIM. ±			MAXIMUM ALLOWABLE TOLERANCES HAVE BEEN DETERMINED AND ANY DEVIATIONS WILL BE CAUSE FOR REJECTION. REMOVE ALL BURRS AND SHARP EDGES					FINISH & SPEC. NO.		ELEC. DES. APP.	MECH. DES. APP.	TF-138 G					
FRAC. DIM. ±																	
ANGULAR DIM. ±																	