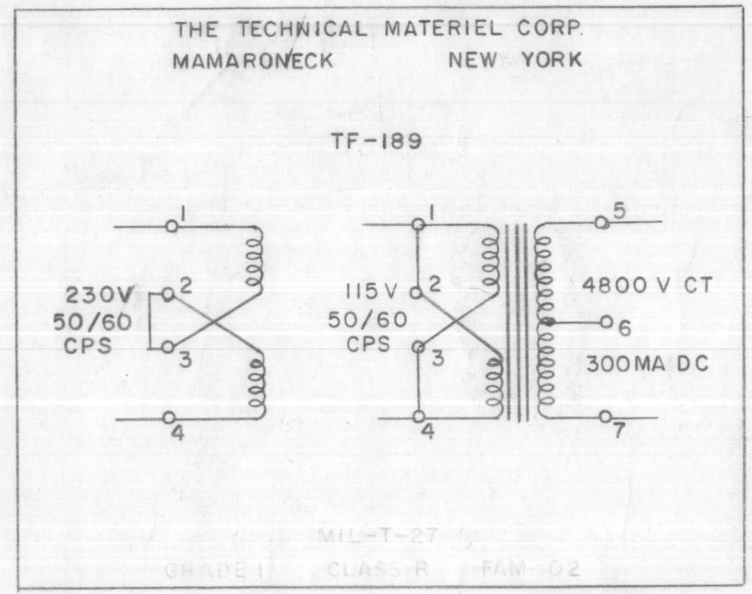


TF-189 B

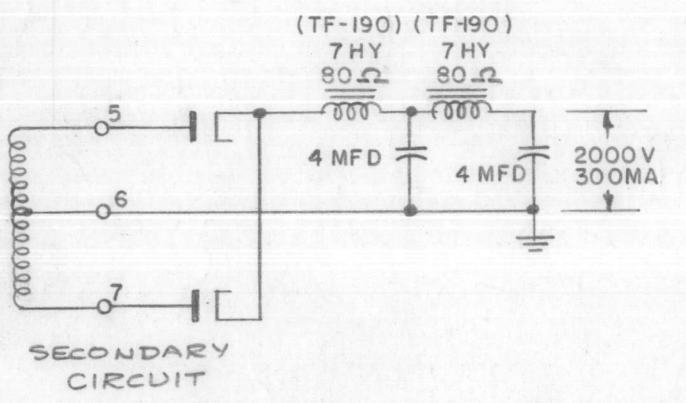
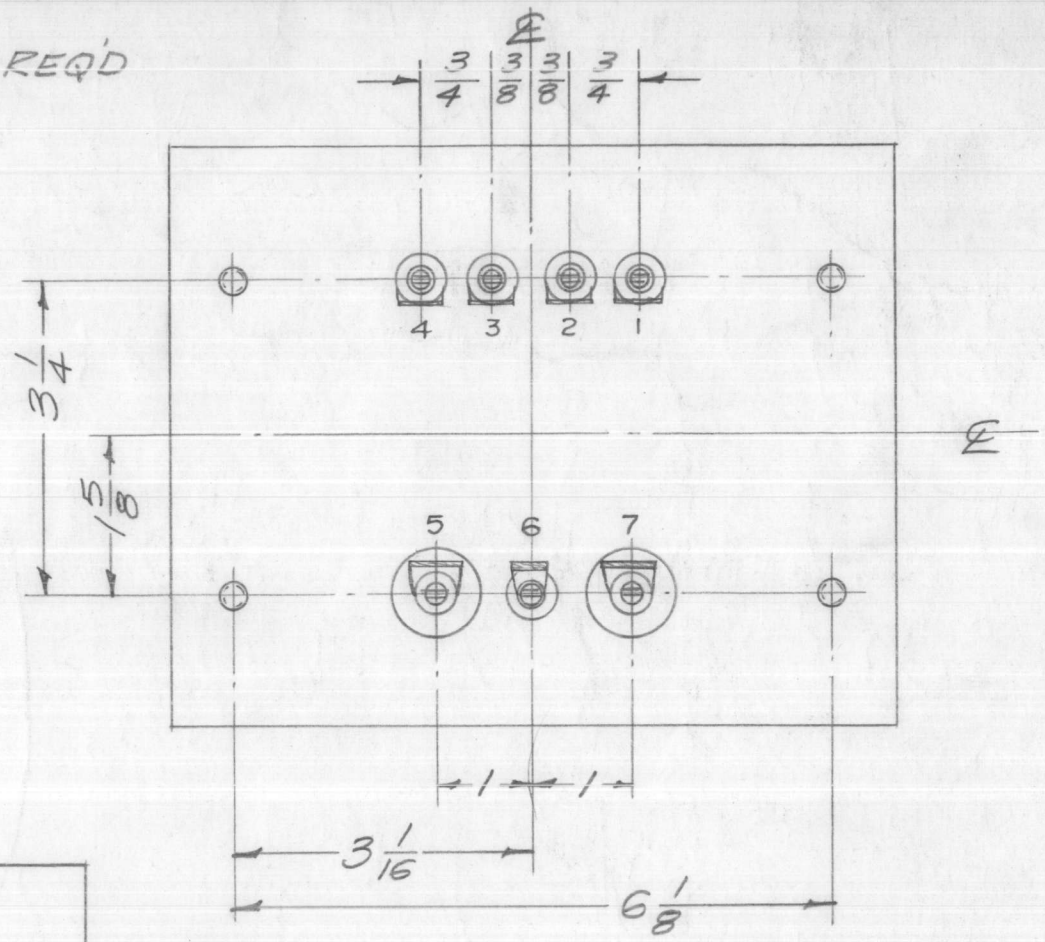
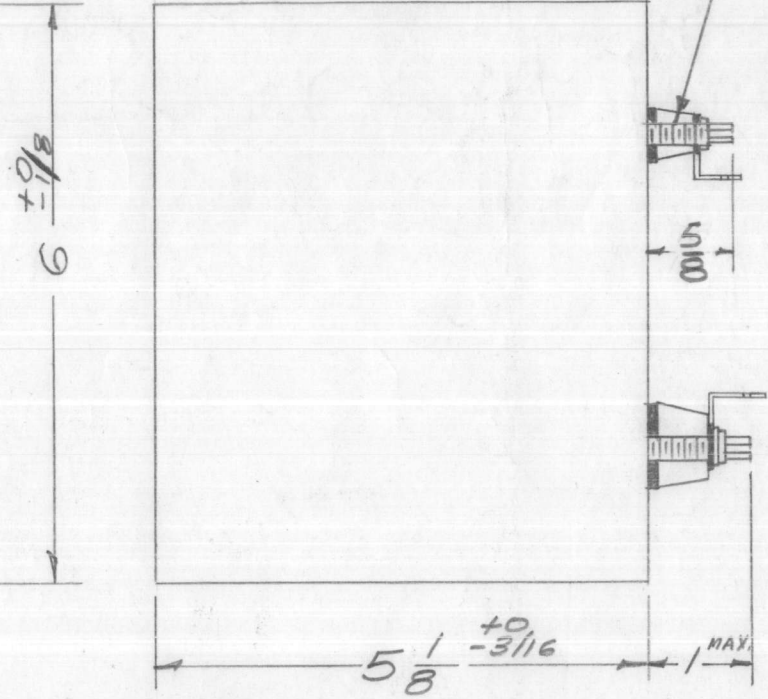
1/4-20 NC Cl. 2 Thds. x 5/8 ± 1/8 Long. 4 REQ'D



THE TECHNICAL MATERIEL CORP.  
MAMARONECK NEW YORK

TF-189

MIL-T-27  
GRADE 1 CLASS R FAM D2



**ELECTRICAL SPECIFICATIONS:**  
PRIMARY 115/230 VAC, 50/60 CPS, Single Phase.  
SECONDARY 4800 V. CT/300 MA DC.

**MECHANICAL SPECIFICATIONS:**  
CASE Rectangular, Steel, MIL Type YY, Hermetically Sealed.  
FINISH TMC Smooth Grey Enamel (S-115), except terminal end.  
SIZE 6 X 7-1/2 X 5-1/8 High, excluding studs and terminals.  
STAMPING Terminals shall be metal stamped 1 - 7 as shown.  
Opposite end shall be rubber stamped in black as shown.

TRANSFORMER SHALL BE IN ACCORDANCE WITH MIL-T-27A AND AMENDMENTS.  
GRADE 1, CLASS R, FAMILY D2  
MIL Type HFLR02YY

NOTE: MANUFACTURED IN ACCORDANCE WITH MIL SPEC T-27-A EXCEPT THAT MIL SPEC T-27-A SHALL NOT APPEAR ON CASE AND QUALIFICATION TESTING IS NOT REQUIRED.

ISSUE	ITEM	CHANGED FROM	DATE	CH. NO.	DRAFTS	CHECKER	ENG. APP.
B	1	TERM. CLARIFIED 5/8 DIM. WAS 13/16	9-27-63	10098	AD	JNY	[Signature]
A	1	NOTE ADDED (MIL-T-27A)	6-29-60	2572	[Signature]	[Signature]	[Signature]

TOLERANCES SCALE: 1/2

DEC. DIM. ±  
FRAC. DIM. ± 1/64  
ANGULAR DIM. ±

A

MAXIMUM ALLOWABLE TOLERANCES HAVE BEEN DETERMINED AND ANY DEVIATIONS WILL BE CAUSE FOR REJECTION.  
REMOVE ALL BURRS AND SHARP EDGES

1	PSP-350	PAL-350	T102	7-21-58
REQ. PER UNIT	MODEL	PROJECT NO.	ASS'Y. NO.	DATE
USED ON				

REQ. ITEM	PART NO.	DESCRIPTION	SYMBOL
THE TECHNICAL MATERIEL CORP. MAMARONECK, NEW YORK			
TRANSFORMER, POWER, STEP-UP			
MATERIAL			
TYPE & TEMPER		HEAT TREAT. SPEC.	DRAWN
FINISH & SPEC. NO.		ELEC. DES. APP.	MECH. DES. APP.
16 7/21/58 [Signature] [Signature]			[Signature] TF-189 B