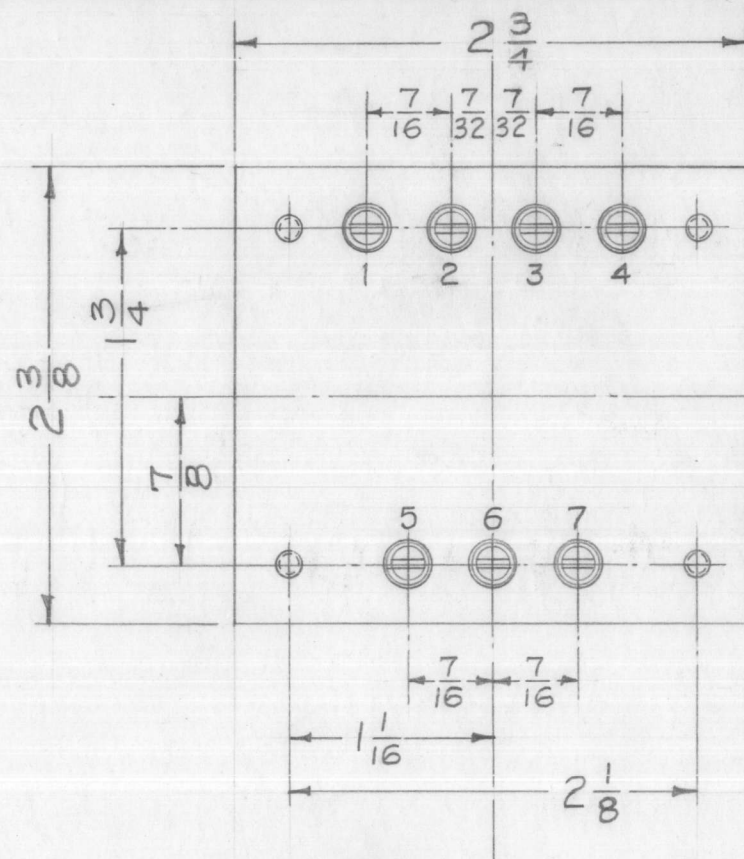


TF-176 B

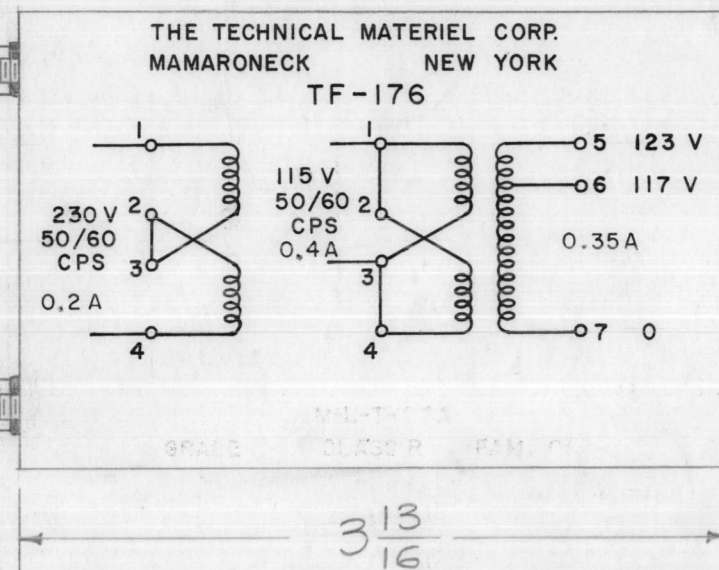
NOTICE TO PERSONS RECEIVING THIS DRAWING

THE TECHNICAL MATERIEL CORPORATION claims proprietary right in the material disclosed hereon. This drawing is issued in confidence for engineering information only and may not be reproduced or used to manufacture anything shown hereon without permission from THE TECHNICAL MATERIEL CORPORATION to the user. This drawing is loaned for mutual assistance and is subject to recall at any time.

Property of:
THE TECHNICAL MATERIEL CORPORATION
 MAMARONECK, NEW YORK



Stamp Case as Shown - Black Gothic



NOTE: MANUFACTURED IN ACCORDANCE WITH MIL SPEC T-27-A EXCEPT THAT MIL SPEC T-27-A SHALL NOT APPEAR ON CASE AND QUALIFICATION TESTING IS NOT REQUIRED.

ELECTRICAL DATA
 PRIMARY — 115/230 V, 50/60 CPS.
 SECONDARY — 117/123 V. RMS. 40 W. @ 117 V. or 42 W @ 123 V.
 INSULATION — Windings Insulated for 1000 V.
 HEAT RISE — Max. 40°C. Rise.

MECHANICAL DATA
 CASE — Hermetically Sealed in Rectangular Steel Case. MIL Type GA
 FINISH — Smooth Grey Enamel (TMC Spec. S-115)
 TERMINALS — 3/8" Long O/A. Solder lug Terminals and Ceramic Bushings.

This Transformer shall be in accordance with MIL-T-27A and Amendment Grade 1, Class R, Family 01.

ISSUE	ITEM	CHANGED FROM	DATE	CH. NO.	DRAFTS	CHECKER	ENG. APP.
B	1	NOTE ADDED (MIL T-27-A)	6-29-60	2572	ONE		KS
A	1	AMPS ADDED TO STAMPING DIAGRAM	3/27/59	—	ONE		JSR
TOLERANCES		SCALE: FULL					
DEC. DIM. ±		MAXIMUM ALLOWABLE TOLERANCES HAVE BEEN DETERMINED AND ANY DEVIATIONS WILL BE CAUSE FOR REJECTION. REMOVE ALL BURRS AND SHARP EDGES					
FRAC. DIM. ± 1/64							
ANGULAR DIM. ±							

REQ. PER UNIT	MODEL	PROJECT NO.	ASS'Y. NO.	DATE
1	ATS-MCU	ATS		12-20-57
USED ON				

REF-BTC # 3256

REQ. ITEM	PART NO.	DESCRIPTION	SYMBOL
—	—	THE TECHNICAL MATERIEL CORP. MAMARONECK, NEW YORK	
—	—	TRANSFORMER, POWER, STEP-UP	
—	—	16 ¹² /20/57	
—	—	DRAWN	
—	—	CHECKED	
—	—	FINAL APPROVAL	
—	—	ELEC. DES. APP.	TF-176
—	—	MECH. DES. APP.	B