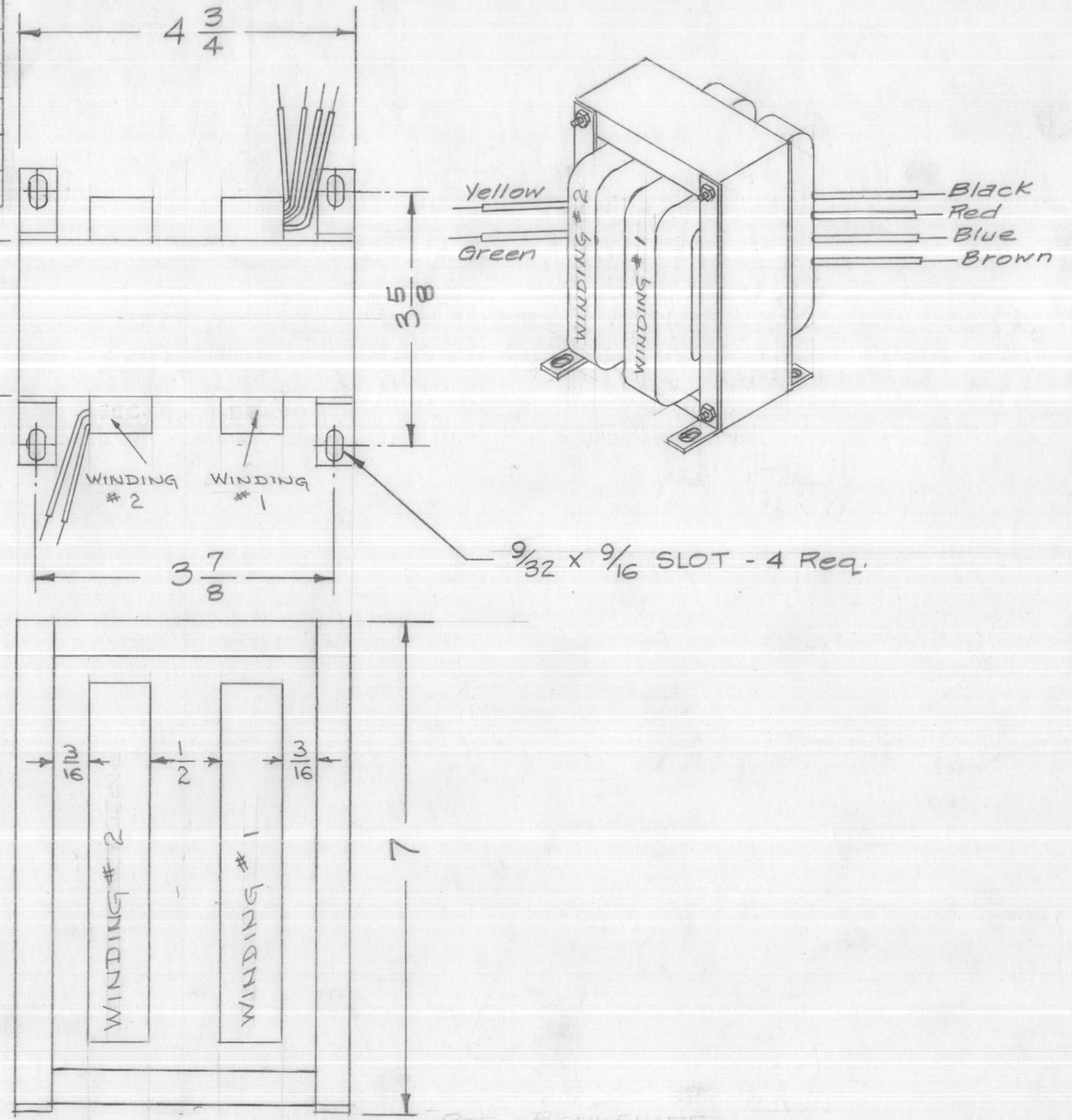


TF-171 G

WINDING DATA	WINDING #1	WINDING #2
VOLTAGE	115, 112, 108	120
FREQ.	60 cps	60 cps
WIRE SIZE	18 H.F.	19 H.F.
TURNS/LAYER	14	16
LAYERS	14	14
TURNS	196	216
TAPS	184, 190	NONE
LEAD LGTH	SEE CHART II	
WIRE FEED	23 T/IN.	23 T/IN.

	COLOR	LENGTH	TURNS	VOLT.
WINDING #1	Black	6"	Common	0
	Red	4 1/2"	184	108V
	Blue	3 1/2"	190	112V
	Brown	3"	196	115V
WINDING #2	Yellow	6 1/2"	Common	0
	Green	5 3/4"	216	120V



Specifications:

- Capacity - 20 mmfd. or less between Winding #1 & Winding #2
- Winding leads must be brought out on opposite sides of core.
- All leads stripped 3/8" and tinned.
- Mandrel size - 2 5/8" x 3 1/8"
- Margin - 1/8"
- Insulation Width - 15/16"
- Insulation form - .020" armo paper.
- Insulation interlayer - .010" armo paper.
- Insulation overlayer - .020" armo paper.
- Core size - EI-19, .014" Silicon.
- Impregnate transformer with varnish before lead are tinned.

ISSUE	ITEM	CHANGED FROM	DATE	CH. NO.	DRAFTS	CHECKER	ENG. APP.
G	2	*1 winding was Primary	12/26/57	7	JAC	AW	ATT
F	1	*2 winding was Secondary	11/26/57	6	K6	RFB	AW
E	1	CAPACITY WAS 20 MFD. (ERROR WHEN REDRAWN)	11/14/57	5	K6	JAC	ATT
		LEAD LENGTHS CHG'D.					

TOLERANCES		SCALE:	
DEC. DIM. ±	A	MAXIMUM ALLOWABLE TOLERANCES HAVE BEEN DETERMINED AND ANY DEVIATIONS WILL BE CAUSE FOR REJECTION.	
FRAC. DIM. ± 1/64		REMOVE ALL BURRS AND SHARP EDGES	
ANGULAR DIM. ±			

1	TLI-1	A-1438	11-14-57
REQ. PER UNIT	MODEL	PROJECT NO.	DATE
USED ON			

REQ. ITEM	PART NO.	DESCRIPTION	SYMBOL
		THE TECHNICAL MATERIEL CORP.	
		MAMARONECK, NEW YORK	
		TRANSFORMER,	
		ISOLATION	
		16 11/14/57	ATT
TYPE & TEMPER		HEAT TREAT. SPEC.	RE-DRAWN
		CHECKED	FINAL APPROVAL
FINISH & SPEC. NO.		ELEC. DES. APP.	MECH. DES. APP.
		TF-171	G