

THE CONTENTS OF THIS DRAWING ARE THE EXCLUSIVE PROPERTY OF THE TECHNICAL MATERIEL CORP. ITS UNAUTHORIZED USE OR REPRODUCTION IN WHOLE OR IN PART IS STRICTLY FORBIDDEN.

REQ. PER UNIT

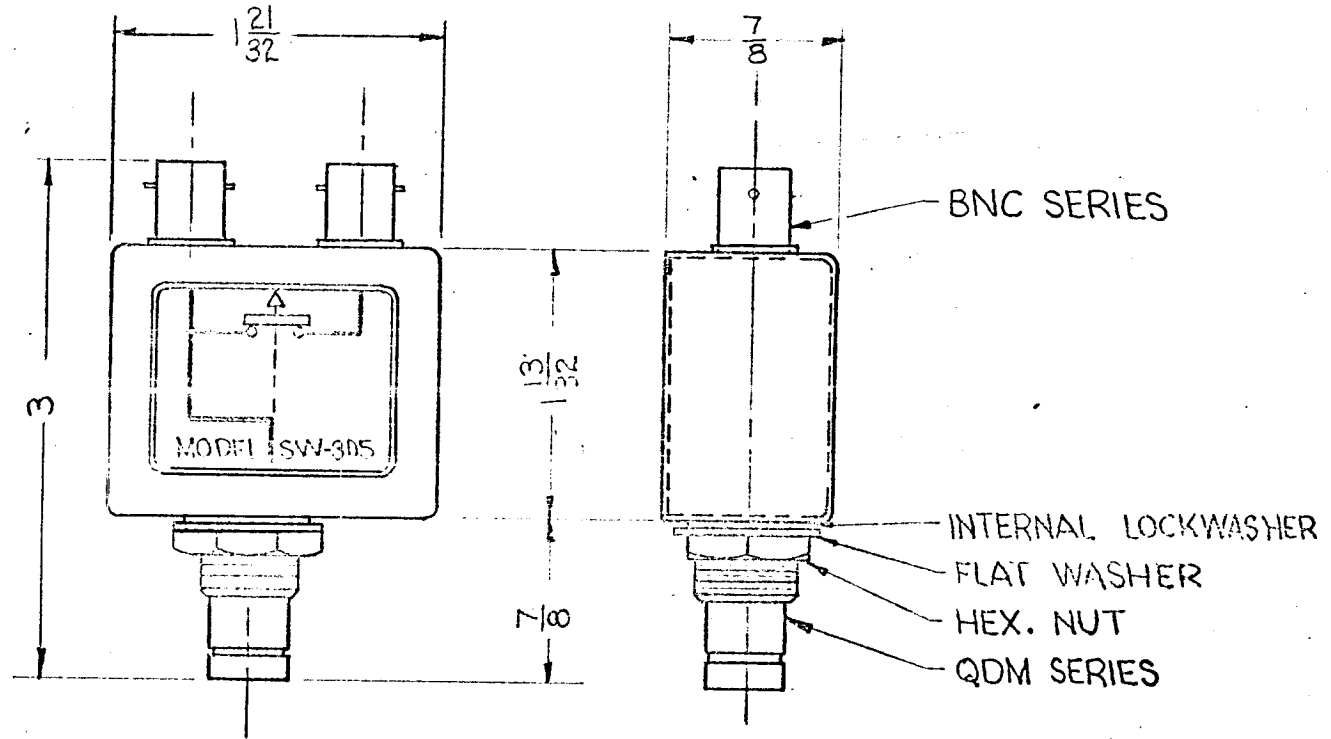
MODEL
SW-305

USED ON

ASS'Y. NO.

DATE

SW-305 A



NOTES:

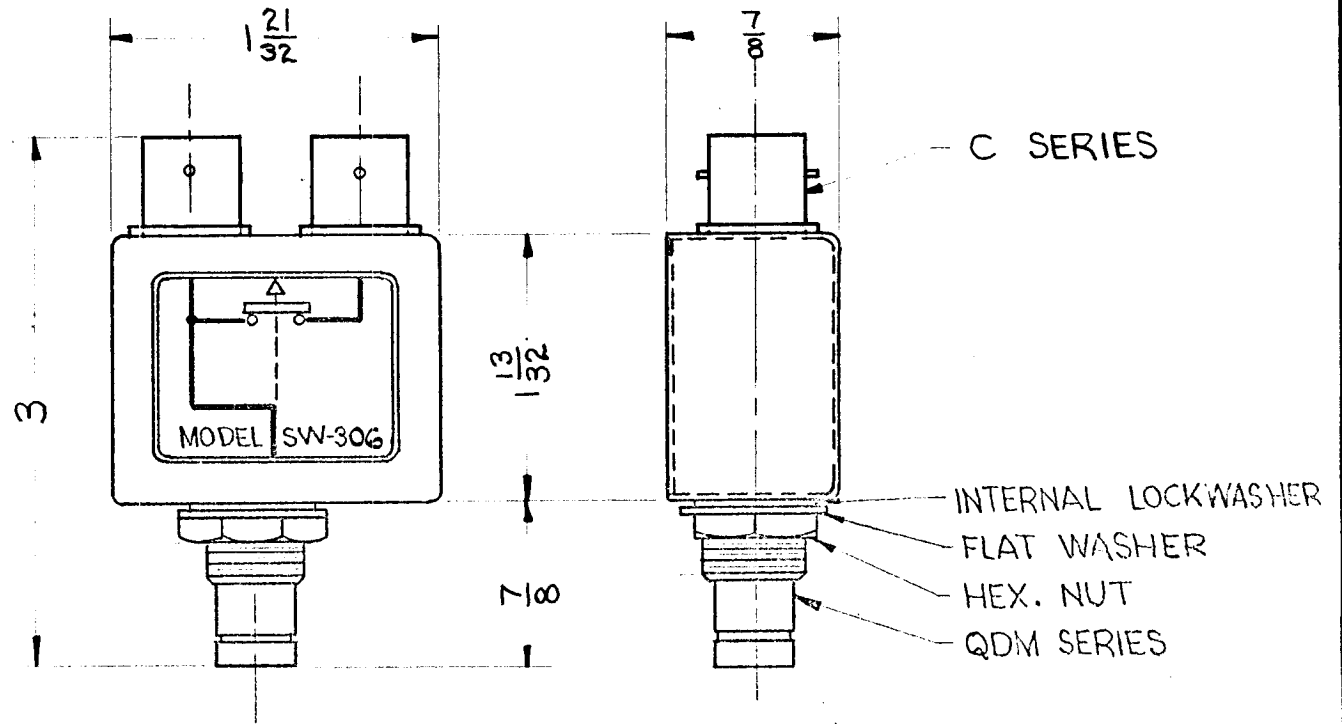
CASE - MATERIAL - BRASS
FINISH - S115 TMC SMOOTH
GREY ENAMEL
CONNECTORS FINISH -
BODIES - RHODIUM FLASH
CONTACTS - GOLD FLASH

NOTE: ASSIGNED PATENT NO. 2,767,267

REQ.	ITEM	PART NO.	DESCRIPTION				SYMBOL
			THE TECHNICAL MATERIEL CORP. MAMARONECK, NEW YORK				
			STOCK SIZE				
A	PATENT NOTE ADDED	1/50/62	14245	F.V.	QDB	RMM	SEE NOTES
SYM	DESCRIPTION	DATE	CHK. NO.	DRAFTS	CHECKER	ENG. APP.	MATERIAL
UNLESS OTHERWISE SPECIFIED: DIMENSIONS ARE IN INCHES		2A-2456					
TOLERANCES ON		MAXIMUM ALLOWABLE TOLERANCES HAVE BEEN DETERMINED AND ANY DEVIATIONS WILL BE CAUSE FOR REJECTION. REMOVE ALL BURRS AND SHARP EDGES					
FRAC. $\pm 1/64$ DEC. $\pm .005$ ANGLES $\pm 1/2^\circ$		TYPE & TEMPER		HEAT TREAT. SPEC.		DRAWN	
		SEE NOTES				R. Turchin 6-5-62	
		FINISH & SPEC. NO.		ELEC. DES. APP.		MECH. DES. APP.	
						<div style="display: flex; justify-content: space-between;"> HO RP </div>	
						<div style="display: flex; justify-content: space-between;"> 6/5/62 SW-305 A </div>	

THE CONTENTS OF THIS DRAWING ARE THE EXCLUSIVE PROPERTY OF THE TECHNICAL MATERIEL CORP. ITS UNAUTHORIZED USE OR REPRODUCTION IN WHOLE OR IN PART IS STRICTLY FORBIDDEN.

REQ. PER UNIT	USED ON			SW-306 A
	MODEL	ASS'Y. NO.	DATE	
	SW-306			



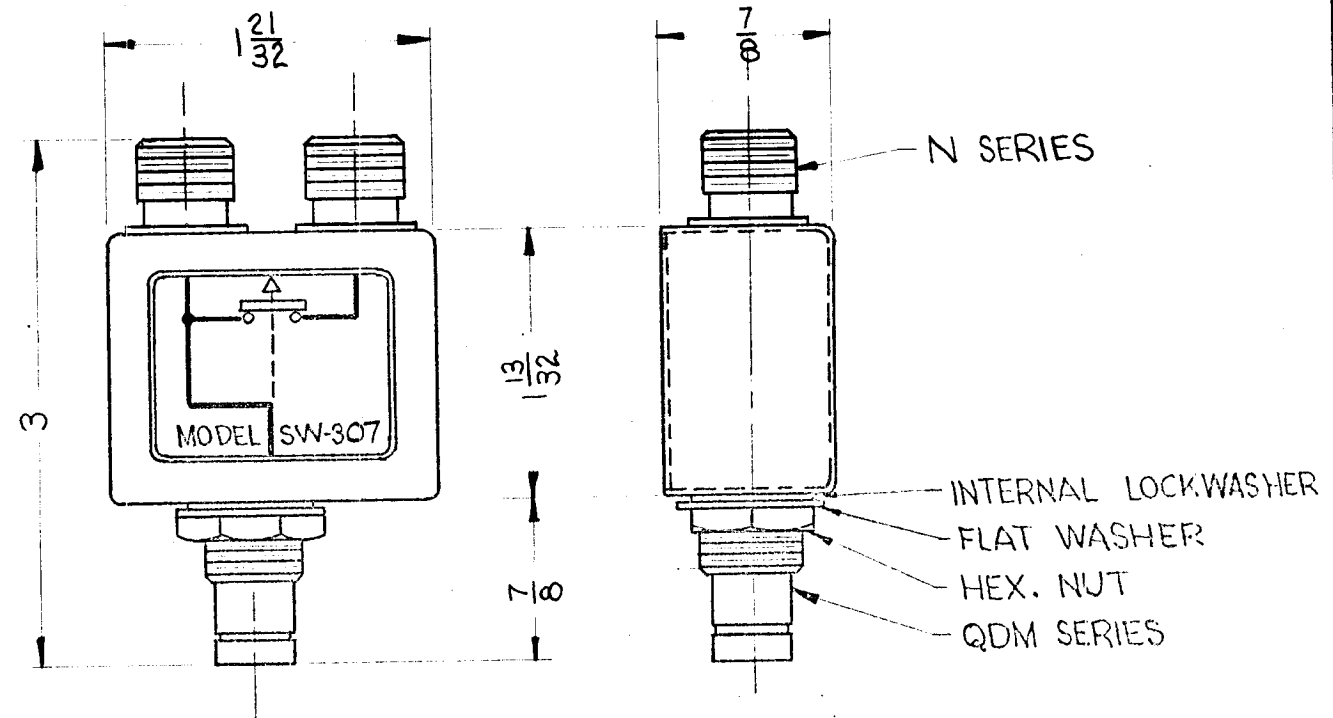
NOTES:
CASE - MATERIAL - BRASS
FINISH: S115 TMC SMOOTH
GREY ENAMEL
CONNECTORS FINISH -
BODIES - RHODIUM FLASH
CONTACTS - GOLD FLASH

NOTE: ASSIGNED PATENT NO. 2,767,267

REQ.	ITEM	PART NO.	DESCRIPTION			SYMBOL
			THE TECHNICAL MATERIEL CORP. MAMARONECK, NEW YORK			
			STOCK SIZE			
A	PATENT NOTE ADDED	9/29/65 14846	F.V.	QOB	MM	SEE NOTES
			MATERIAL			DUAL C TO SINGLE QDM
UNLESS OTHERWISE SPECIFIED:		2A-2457		R. Junction	6-5-62	
DIMENSIONS ARE IN INCHES		MAXIMUM ALLOWABLE TOLERANCES HAVE BEEN DETERMINED AND ANY DEVIATIONS WILL BE CAUSE FOR REJECTION. REMOVE ALL BURRS AND SHARP EDGES		TYPE & TEMPER	HEATTREAT. SPEC.	DRAWN
TOLERANCES ON				DRAWN		CHECKED
FRAC. $\pm 1/64$ DEC. $\pm .005$ ANGLES $\pm 1/2^\circ$				DRAWN		FINAL APPROVAL
				SEE NOTES		
				FINISH & SPEC. NO.		ELEC. DES. APP.
						MECH. DES. APP.
						SW-306 A

THE CONTENTS OF THIS DRAWING ARE THE EXCLUSIVE PROPERTY OF THE TECHNICAL MATERIEL CORP. ITS UNAUTHORIZED USE OR REPRODUCTION IN WHOLE OR IN PART IS STRICTLY FORBIDDEN.

REQ. PER UNIT	USED ON			SVV-307 A
	MODEL	ASS'Y. NO.	DATE	
	SW-307			



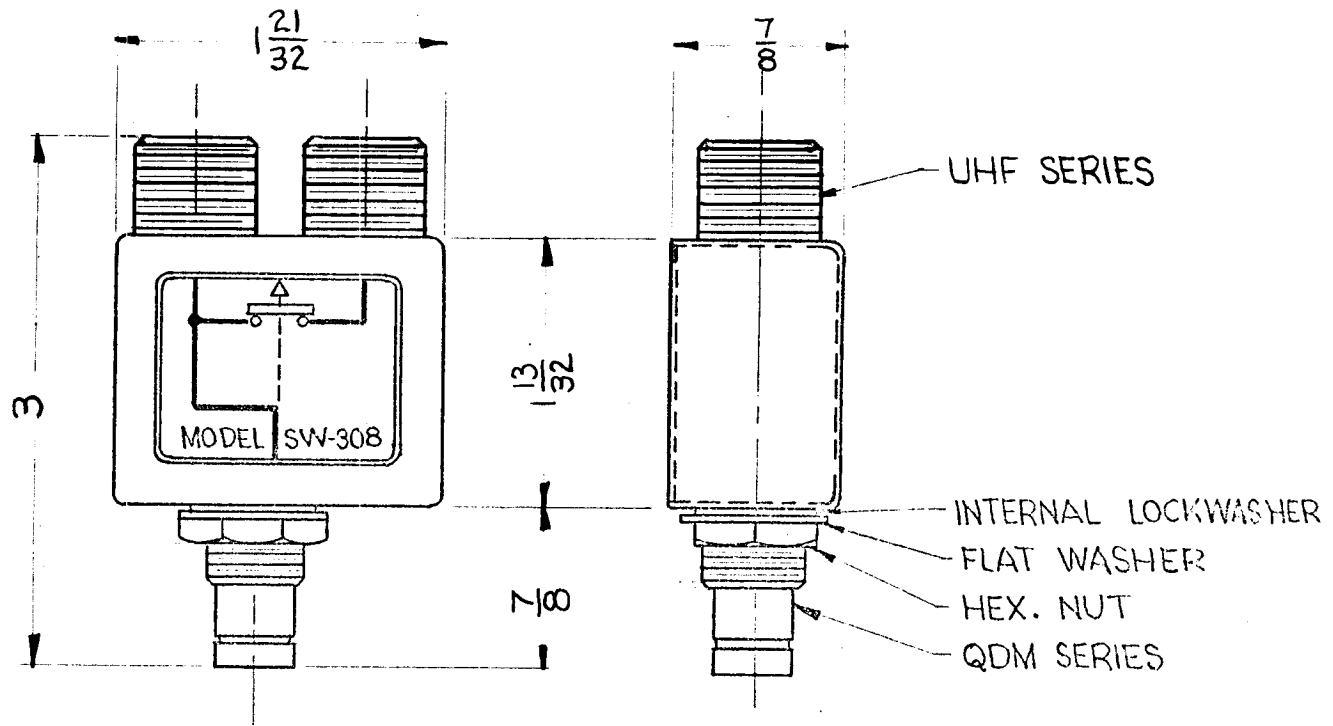
NOTES:
CASE - MATERIAL - BRASS
FINISH: S115 TMC SMOOTH
GREY ENAMEL
CONNECTORS FINISH -
BODIES - RHODIUM FLASH
CONTACTS - GOLD FLASH

NOTE: ASSIGNED PATENT NO. 2,767,267

REQ.	ITEM	PART NO.	DESCRIPTION			SYMBOL
			THE TECHNICAL MATERIEL CORP. MAMARONECK, NEW YORK			
			STOCK SIZE			
			SEE NOTES			
			MATERIAL			
			R. Juchin 6-5-62			
			DRAWN			
			CHECKED			
			FINAL APPROVAL			
			SEE NOTES			
			FINISH & SPEC. NO.			
			ELEC. DES. APP.			
			MECH. DES. APP.			
			2A-2458			
			UNLESS OTHERWISE SPECIFIED: DIMENSIONS ARE IN INCHES TOLERANCES ON FRAC. $\pm 1/64$ DEC. $\pm .005$ ANGLES $\pm 1/2^\circ$			
			MAXIMUM ALLOWABLE TOLERANCES HAVE BEEN DETERMINED AND ANY DEVIATIONS WILL BE CAUSE FOR REJECTION. REMOVE ALL BURRS AND SHARP EDGES			
			DATE			
			CH. NO.			
			DRAFTS			
			CHECKER			
			ENG. APP.			
			A PATENT NOTE ADDED			
			9/23/61			
			14846			
			J.V.V.			
			R.C.B.			
			M.K.			
			SW-307 A			

THE CONTENTS OF THIS DRAWING ARE THE EXCLUSIVE PROPERTY OF THE TECHNICAL MATERIEL CORP. ITS UNAUTHORIZED USE OR REPRODUCTION IN WHOLE OR IN PART IS STRICTLY FORBIDDEN.

REQ. PER UNIT	USED ON			SW-308	A
	MODEL	ASS'Y. NO.	DATE		
	SW-308				



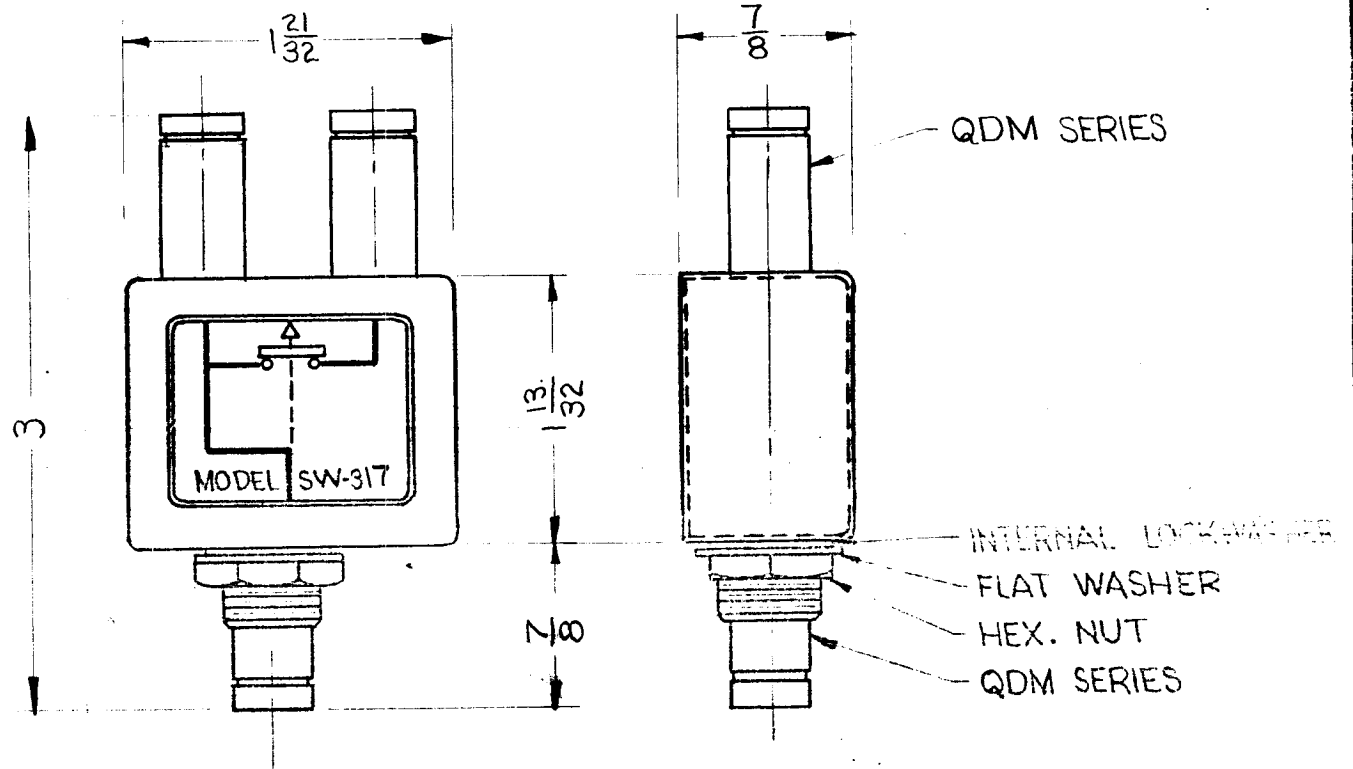
NOTES:
CASE - MATERIAL - BRASS
FINISH: S115 TMC SMOOTH
GREY ENAMEL
CONNECTORS FINISH-
BODIES - RHODIUM FLASH
CONTACTS - GOLD FLASH

NOTE: ASSIGNED PATENT NO. 2,767,267

							REQ. ITEM	PART NO.	DESCRIPTION	SYMBOL
									THE TECHNICAL MATERIEL CORP. MAMARONECK, NEW YORK	
							STOCK SIZE		SWITCH JACK ASSEMBLY	
A	PATENT NOTE ADDED		9/30/62	14846	P.V.	QCB	MM	SEE NOTES	DUAL UHF TO SINGLE QDM	
SYM	DESCRIPTION		DATE	CH. NO.	DRAFTS	CHECKER	ENG. APP.	MATERIAL		
UNLESS OTHERWISE SPECIFIED:			2A-2459				R. Turchin 6-5-62		DRAWN	
DIMENSIONS ARE IN INCHES			MAXIMUM ALLOWABLE TOLERANCES HAVE BEEN DETERMINED AND ANY DEVIATIONS WILL BE CAUSE FOR REJECTION. REMOVE ALL BURRS AND SHARP EDGES				TYPE & TEMPER		HEAT TREAT. SPEC.	
TOLERANCES ON							DRAWN		CHECKED	
FRAC. ± 1/64 DEC. ± .005 ANGLES ± 1/2°			SEE NOTES		FINISH & SPEC. NO.		ELEC. DES. APP.		MECH. DES. APP.	
									SW-308	
									A	

THE CONTENTS OF THIS DRAWING ARE THE EXCLUSIVE PROPERTY OF THE TECHNICAL MATERIEL CORP. ITS UNAUTHORIZED USE OR REPRODUCTION IN WHOLE OR IN PART IS STRICTLY FORBIDDEN.

REQ. PER UNIT	USED ON			SW-317	A
	MODEL	ASS'Y. NO.	DATE		
	SW-317		6-13-62		



NOTES:
CASE - MATERIAL - BRASS
FINISH - S115 TMC SMOOTH
GREY ENAMEL
CONNECTORS FINISH -
BODIES - RHODIUM FLASH
CONTACTS - GOLD FLASH

NOTE: ASSIGNED PATENT NO. 2,767,267

REQ.	ITEM	PART NO.	DESCRIPTION			SYMBOL
			THE TECHNICAL MATERIEL CORP. MAMARONECK, NEW YORK			
			STOCK SIZE			
			SEE NOTES			
			MATERIAL			
A	PATENT NOTE ADDED	8/3/65 14846	2A-2519	SWITCH JACK ASSEMBLY		DUAL QDM TO SINGLE QDM
SYM	DESCRIPTION	DATE	CH. NO.	DRAFTS	CHECKER	ENG. APP.
UNLESS OTHERWISE SPECIFIED: DIMENSIONS ARE IN INCHES		2A-2519		MAXIMUM ALLOWABLE TOLERANCES HAVE BEEN DETERMINED AND ANY DEVIATIONS WILL BE INDICATED BY DIMENSION		
				TYPE & TEMPER	HEAT TREAT. SPEC.	DRAWN
				SEE NOTES		CHECKED
						FINAL APPROVAL
						6-5-62
						6/21/62
						SW-317 A

THE CONTENTS OF THIS DRAWING ARE THE EXCLUSIVE PROPERTY OF THE TECHNICAL MATERIEL CORP. ITS UNAUTHORIZED USE OR REPRODUCTION IN WHOLE OR IN PART IS STRICTLY FORBIDDEN.

REQ. PER UNIT

MODEL
SW-318

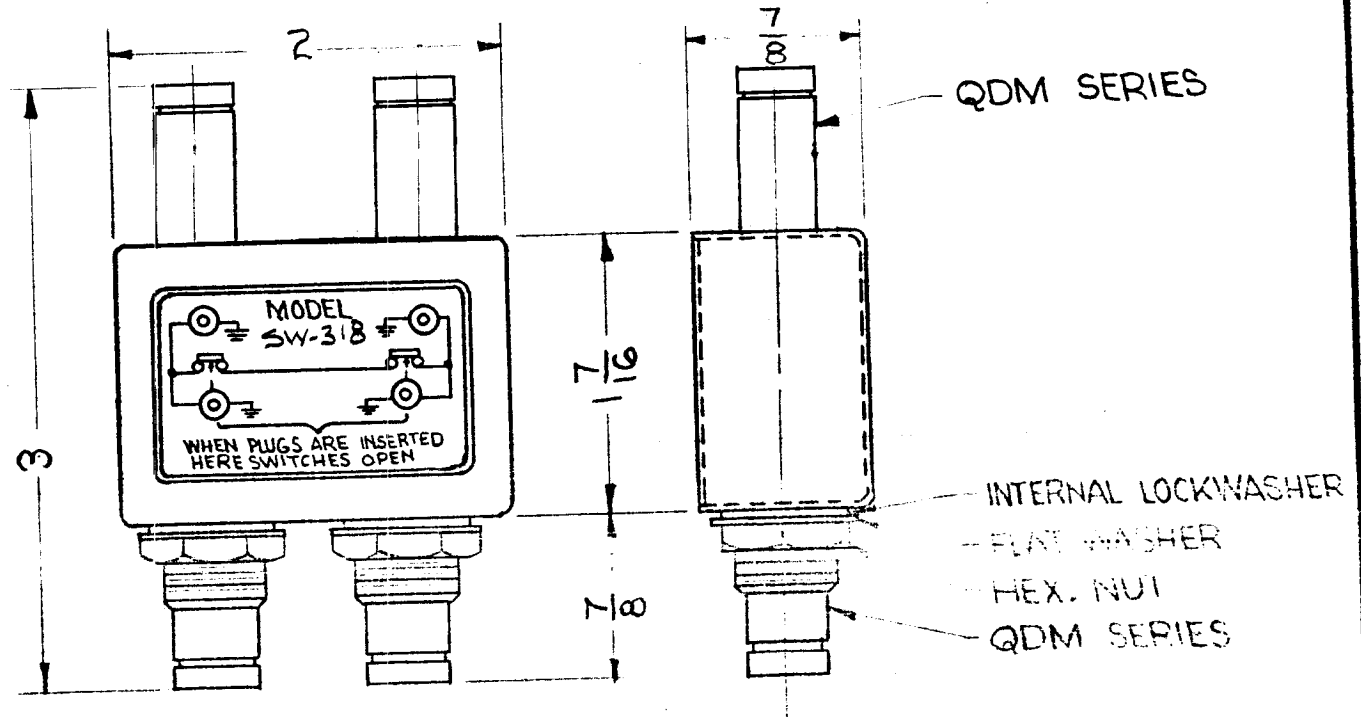
USED ON

ASS'Y. NO.

DATE

6-6-62

SW-318 | A



NOTES:
CASE - MATERIAL-BRASS
FINISH-SI15 TMC SMOOTH
GREY ENAMEL
CONNECTORS - FINISH
BODIES-RHODIUM FLASH
CONTACTS-GOLD FLASH

NOTE: ASSIGNED PATENT NO. 2,767,267

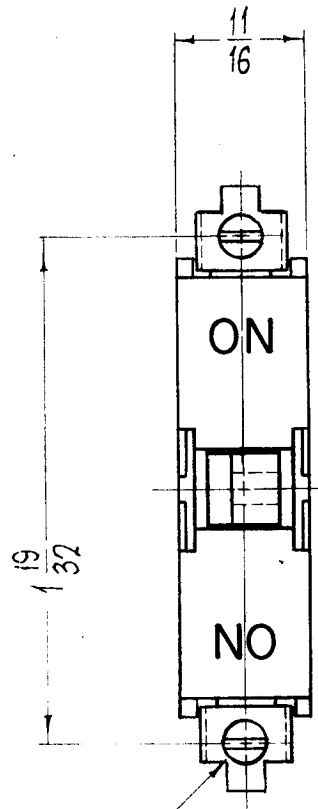
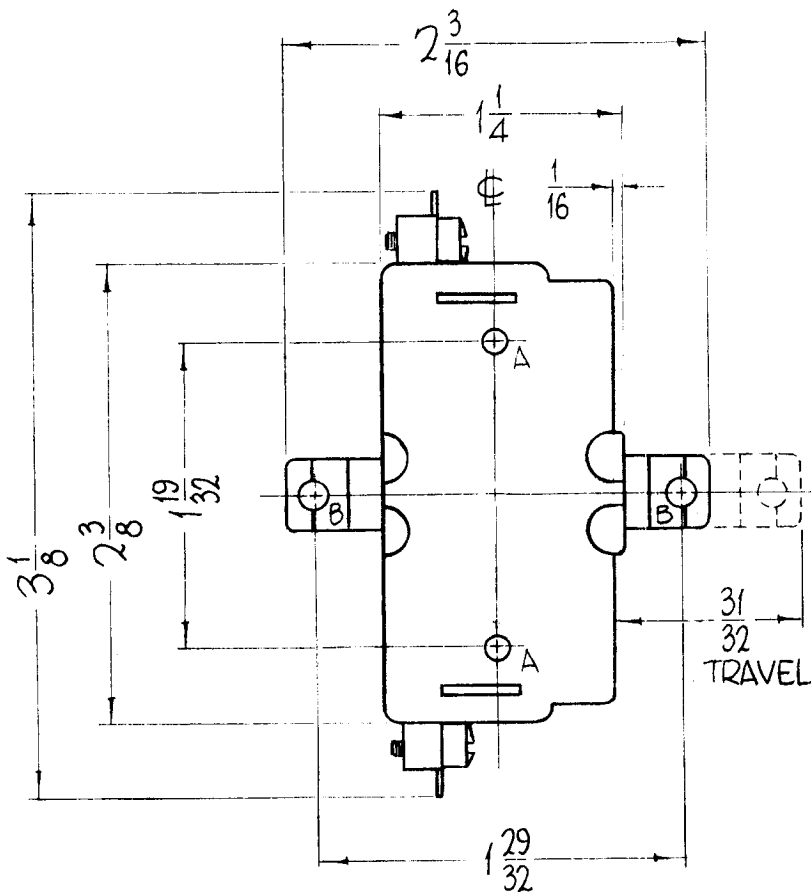
				REQ.	ITEM	PART NO.	DESCRIPTION	SYMBOL
							THE TECHNICAL MATERIEL CORP. MAMARONECK, NEW YORK	
				STOCK SIZE			SWITCH JACK, ASSEMBLY	
				SEE NOTES			DUAL QDM TO QDM	
				MATERIAL			R. L. Linder	
							J. Wee	
							CHECKED	
							FINAL APPROVAL	
UNLESS OTHERWISE SPECIFIED: DIMENSIONS ARE IN INCHES TOLERANCES ON				2A-2520			SW 318 A	
MAXIMUM ALLOWABLE TOLERANCES HAVE BEEN DETERMINED AND ANY DEVIATIONS WILL BE CAUSE FOR REJECTION.				TYPE & TEMPER			DRAWN	
				HEAT TREAT. SPEC.			CHECKED	
				SEE NOTES			FINAL APPROVAL	

ANGLES ± 1/2°

HOLES
 A-9/64 DIA. 2
 B-5/32 DIA. 2

REQ. PER UNIT	USED ON		
	MODEL	ASS'Y. NO.	DATE
3	GPT-200K	RL-147	11-1-63

SW-323 0



NOTE
 ALL DIMENSIONS FOR
 REFERENCE ONLY.

② 8-32 MTG. TERMINALS.

REQ.	ITEM	PART NO.	F. BUDETTI	DESCRIPTION	SYMBOL	
				THE TECHNICAL MATERIEL CORP. MAMARONECK, NEW YORK		
				SWITCH, RELAY, CONTACTOR MAGNETIC		
0	ORIG. RELEASE FOR PROD.	5-16-64	SRG			
SYM	DESCRIPTION	DATE	CH. NO.	DRAFTS	CHECKER	ENG. APP.
UNLESS OTHERWISE SPECIFIED DIMENSIONS ARE IN INCHES AND INCLUDE CHEMICALLY APPLIED OR PLATED FINISHES		SCALE				
DECIMALS	FRACTIONS	CODE	S401-40 (CR105 X 300N)			
.X ± .05	± 1/64					
.XX ± .01	ANGLES					
.XXX ± .005	± 0° 30'					
TOLERANCES						
FINISH & SPEC. NO.						
ELEC. DES. APP.		MECH. DES. APP.		SW-323 10		

THE CONTENTS OF THIS DRAWING ARE THE EXCLUSIVE PROPERTY OF THE TECHNICAL MATERIEL CORP. ITS UNAUTHORIZED USE FOR REPRODUCTION IN WHOLE OR IN PART IS STRICTLY FORBIDDEN.

REQ. PER UNIT

1

USED ON

MODEL

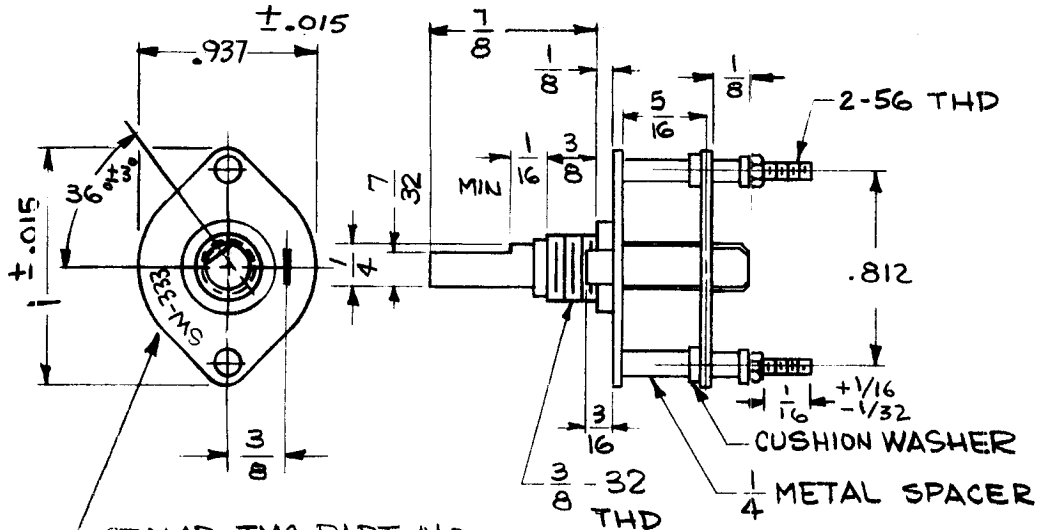
VLR-1

ASS'Y. NO.

DATE

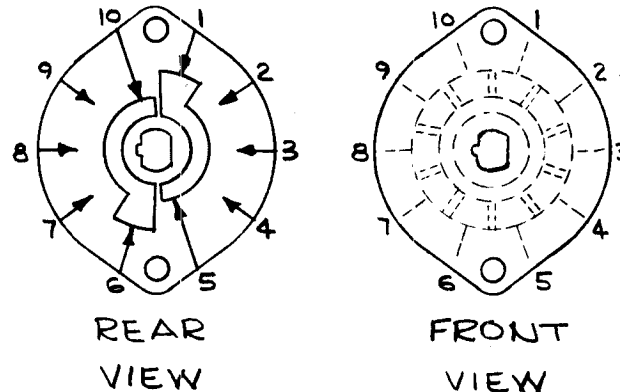
6-27-63

SW 333 B



NOTE: STAMP TMC PART NO AS SHOWN WITH LATEST REVISION LETTER

FRONT & REAR SECTIONS VIEWED FROM FRONT OR KNOB END OF SWITCH, SHOWN IN EXTREME CCW POSITION.



SPECIFICATIONS

TMC PART NUMBER: SW-333 STAMP ON FRONT PLATE

FRONT PLATE SHAPE: ROUND

MECHANICAL SPECIFICATIONS:

NUMBER OF SECTIONS-1

NUMBER OF POSITIONS-4

ANGLE OF THROW- $36^{\circ} \pm 3^{\circ}$

CONTACTS:

SHORTING TYPE, SECTIONS-1

SILVER ALLOY, SECTIONS-1

WAFERS:

STATOR-SILICON GLASS

1 SECTION

ROTOR-KEL-F

1 SECTION

FINISH REQUIREMENTS:

SALT TEST-200HOURS

HARDWARE, TO BE SUPPLIED BY MFG.

1 QUAN. $3/8$ -32 NUT, $1/2$ ACROSS

FLATS, MATERIAL-BRASS PLATING-

NICKEL

1 QUAN. $3/8$ INTERNAL TOOTH

LOCKWASHER

MATERIAL-PHOS. BRONZE PLATING-NICKEL

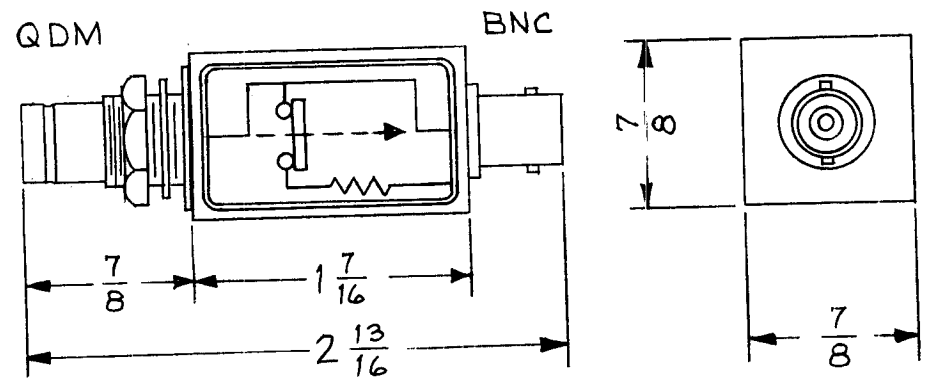
ELECTRICAL SPECIFICATIONS:

MAXIMUM RATED VOLTAGE-50V

MAXIMUM RATED CURRENT- $1/2$ AMP

B	ADD $+1/16 - 1/32$ TO $1/16$ DIM ADD $\pm 3^{\circ}$ TO 36° DIM	11/2/66	17157	RME	<i>[Signature]</i>	<i>[Signature]</i>	REQ. ITEM	PART NO.	M. GELLMAN	DESCRIPTION	SYMB L	
A	SPECS. UPDATED 5/16 WAS 7/16	10.6.64	12550	ARB	<i>[Signature]</i>	<i>[Signature]</i>	THE TECHNICAL MATERIEL CORP. MAMARONECK. NEW YORK					
O	ORIGINAL RELEASE FOR PRODUCTION	5-11-64	O	A.M.	<i>[Signature]</i>	<i>[Signature]</i>	SWITCH, ROTARY					
XI	SPECS UPDATED	2/28-64	XI	<i>[Signature]</i>	<i>[Signature]</i>	<i>[Signature]</i>	SEE SPECS.					
SYM	DESCRIPTION	DATE	CH. NO.	DRAFTS	CHECKER	ENG. APP.	MATERIAL					
UNLESS OTHERWISE SPECIFIED DIMENSIONS ARE IN INCHES AND INCLUDE CHEMICALLY APPLIED OR PLATED FINISHES		SCALE					NONE					
DECIMALS .X $\pm .03$.XX $\pm .01$.XXX $\pm .005$		TOLERANCES		FRACTIONS $\pm 1/64$ ANGLES $\pm 0^{\circ} 30'$		CODE	TYPE & TEMPER					HEAT TREAT. SPEC.
						C	SEE SPECS.					SW 333 B
						S401-13	FINISH & SPEC. NO.					ELEC. DES. APP. MECH. DES. APP.

REQ. PER UNIT	USED ON			SW-341	A
	MODEL	ASS'Y. NO.	DATE		



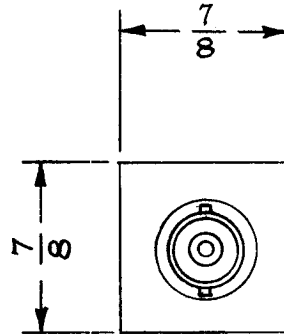
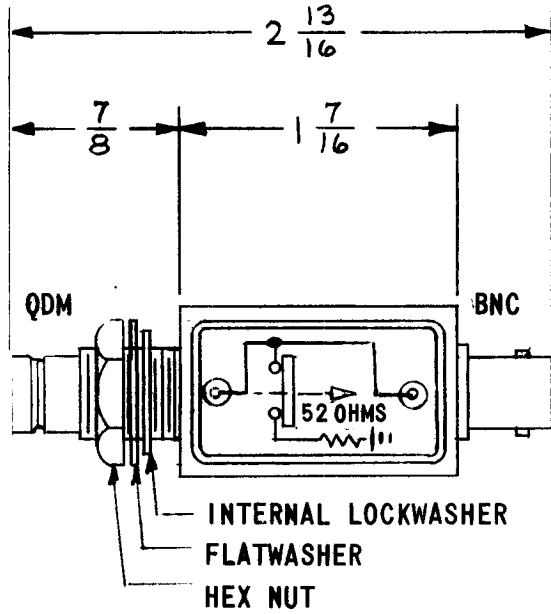
NOTE:
RESISTANCE TO CASE
WHEN QDM PLUG REMOVED
IS 72 OHM

PANEL MOUNTING
MAX. THICKNESS 3/16

NOTE: ASSIGNED PATENT NO. 2,767,267

							REQ. ITEM	PART NO.	MARTINENGO DESCRIPTION	SYMBOL
									THE TECHNICAL MATERIEL CORP. MAMARONECK. NEW YORK	
									SWITCH, QDM	
									RESISTIVE TERMINATED	
A	PATENT NOTE ADDED	9/10/65	14846	F.V.	QCB	RWA				
SYM	DESCRIPTION	DATE	CH. NO.	DRAFTS	CHECKER	ENG. APP.	MATERIAL			
UNLESS OTHERWISE SPECIFIED DIMENSIONS ARE IN INCHES AND INCLUDE CHEMICALLY APPLIED OR PLATED FINISHES							SCALE		M. TANTILLO 10-23-63	
							TYPE & TEMPER HEAT TREAT. SPEC.		DRAWN	CHECKED
							FINISH & SPEC. NO.		ELEC. DES. APP.	MECH. DES. APP.
DECIMALS .X ± .05 .XX ± .01 .XXX ± .005							FRACTIONS ± 1/64 ANGLES ± 0° 30'		10-24-63	
TOLERANCES							CODE		SW-341	
									A	

REQ. PER UNIT	USED ON			SW-346	Ø
	MODEL	ASS'Y. NO.	DATE		
1	SW346				



SPECIFICATIONS

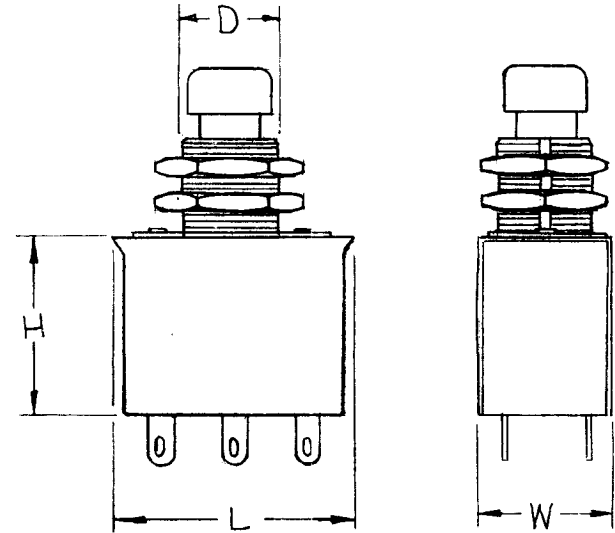
CONNECTOR BODIES & CAN: BRASS
 PANEL MOUNTING MAX THICKNESS: 3/16
 FINISH: S115 TMC SMOOTH GRAY ENAMEL

NOTES:

NORMAL THROUGH NON-RESISTIVE
 WHEN QDM IS NOT ENGAGED, RESISTANCE
 IS 52 ±5% OHMS.

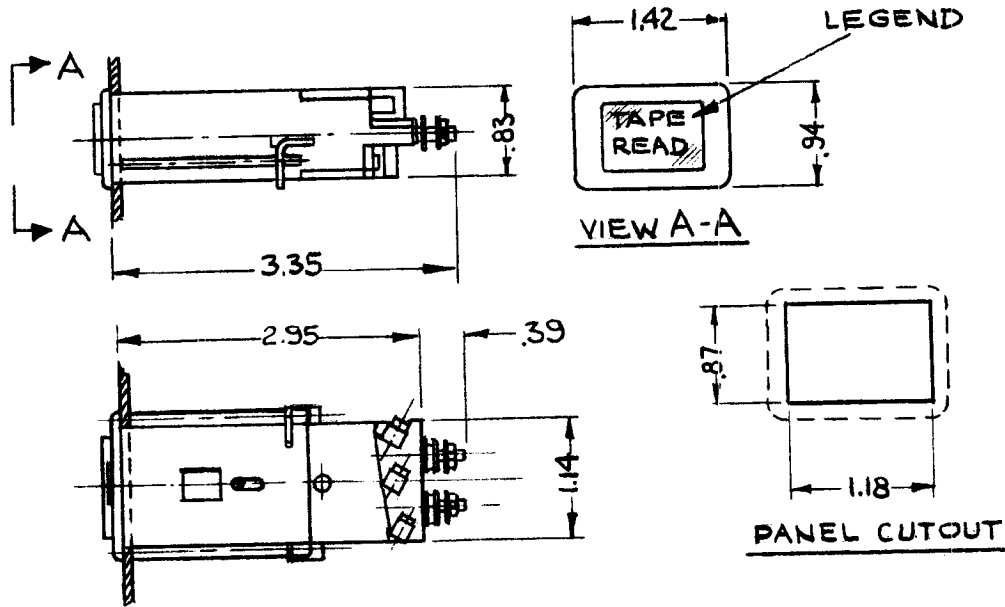
REQ. ITEM	PART NO.	MARTINENGO DESCRIPTION	SYMBOL
		THE TECHNICAL MATERIEL CORP. MAMARONECK. NEW YORK	
	STOCK SIZE	SWITCH, QDM	
Ø	ORIG. REL. FOR PROD.	RESISTIVE TERMINATED	
SYM	DESCRIPTION	DATE	CH. NO. DRAFTS CHECKER ENG. APP.
UNLESS OTHERWISE SPECIFIED DIMENSIONS ARE IN INCHES AND INCLUDE CHEMICALLY APPLIED OR PLATED FINISHES		SCALE	
DECIMALS .X ± .05 .XX ± .01 .XXX ± .005	FRACTIONS ± 1/64 ANGLES ± 0° 30'	CODE	2A4682
TOLERANCES			
FINISH & SPEC. NO.		ELEC. DES. APP.	MECH. DES. APP.
		M. TANTILLO 2-10-64	12-19-64 2-10-64
			SW-346 Ø

TMC NO.	MFG NO.	DESC	VOLTS	AMPS	L	W	H	D	REQ. PER UNIT	USED ON			
										MODEL	ASS'Y. NO.	DATE	
SW 360-1	SPEMCO #1149	DPDT	125 250	6 3	1-1/4	11/16	15/16	1/2	2	GPT-200K(A396)		5-13-64	SW 360 0



									REQ. ITEM	PART NO.	F. BUDETTI	DESCRIPTION	SYMBOL	
												THE TECHNICAL MATERIEL CORP. MAMARONECK. NEW YORK		
										STOCK SIZE		SWITCH, PUSH BUTTON		
0	ORIG. RELEASE FOR PROD	5-16-64			SRG									
SYM	DESCRIPTION	DATE	CH. NO.	DRAFTS	CHECKER	ENG. APP.				MATERIAL				
UNLESS OTHERWISE SPECIFIED DIMENSIONS ARE IN INCHES AND INCLUDE CHEMICALLY APPLIED OR PLATED FINISHES		SCALE									SRG	aa	RA	
DECIMALS .X ± .05 .XX ± .01 .XXX ± .005	TOLERANCES	FRACTIONS ± 1/64 ANGLES ± 0° 30'	CODE C							TYPE & TEMPER	HEAT TREAT. SPEC.	DRAWN	CHECKED	FINAL APPROVAL
														SW 360 0
										FINISH & SPEC. NO.	ELEC. DES. APP.	MECH. DES. APP.		

TMC P/N	MFG P/N	CONTACT ARRANGEMENT	ILLUMINATED	BUTTON COLOR	LAMP VOLT	LEGEND	LETTERING HEIGHT	REQ. PER UNIT	USED ON				
									MODEL	ASS'Y. NO.	DATE		
SW 371-1	02111	SPDT MOMENTARY	NO	GREEN	—	TAPE READ	5/32	1	RTPA-1	A3856	12-11-64	SW371	A
SW 371-2	02121	SPDT MOMENTARY	YES	GREEN	24	TAPE READ	5/32						



SPECS:

TYPE: PUSH BUTTON
 CONTACT ARR: SEE CHART
 CURRENT RATING MAX:
 6 AMP @ 220 VAC
 0.25 AMP @ 220 VDC
 MAX VOLTAGE: 2000 V
 AVAIL. LAMP VOLT.: 6, 12, 24, 36, 48, 60
 (SEE CHART)
 AVAIL. COLOR: WHITE, BLACK, RED,
 GREEN, YELLOW & BLUE (SEE CHART)
 CASE MATERIAL: PLASTIC (BLACK)

STANDARD DRAWING

SYM	DESCRIPTION	DATE	CH. NO.	DRAFTS	CHECKER	ENG. APP.	REQ. ITEM	PART NO.	EATON	DESCRIPTION	SYMBOL	
A	-1 WAS 02111A1 -2 WAS 02121A1	6/2/65	CC							THE TECHNICAL MATERIEL CORP. MAMARONECK, NEW YORK	SWITCH, LIGHTED (PUSH BUTTON)	
Ø	ORIGINAL RELEASE FOR PRODUCTION	2.10.65										
X	EXPER. RELEASE	11.16.64	X									
UNLESS OTHERWISE SPECIFIED DIMENSIONS ARE IN INCHES AND INCLUDE CHEMICALLY APPLIED OR PLATED FINISHES							SCALE	NONE				
DECIMALS .X ± .05 .XX ± .01 .XXX ± .005		TOLERANCES		FRACTIONS ± 1/64 ANGLES ± 0° 30'		CODE	C S401 - 348					
							TYPE & TEMPER	HEAT TREAT. SPEC.	FINISH & SPEC. NO.	DRAWN J.P. Jordan 2/8/65	CHECKED W. JORDAN 2/8/65	FINAL APPROVAL SW371 A

THE CONTENTS OF THIS DRAWING ARE THE EXCLUSIVE PROPERTY OF THE TECHNICAL MATERIEL CORP. ITS UNAUTHORIZED USE OR REPRODUCTION IN WHOLE OR IN PART IS STRICTLY FORBIDDEN.

REQ. PER UNIT

MODEL

SW-409

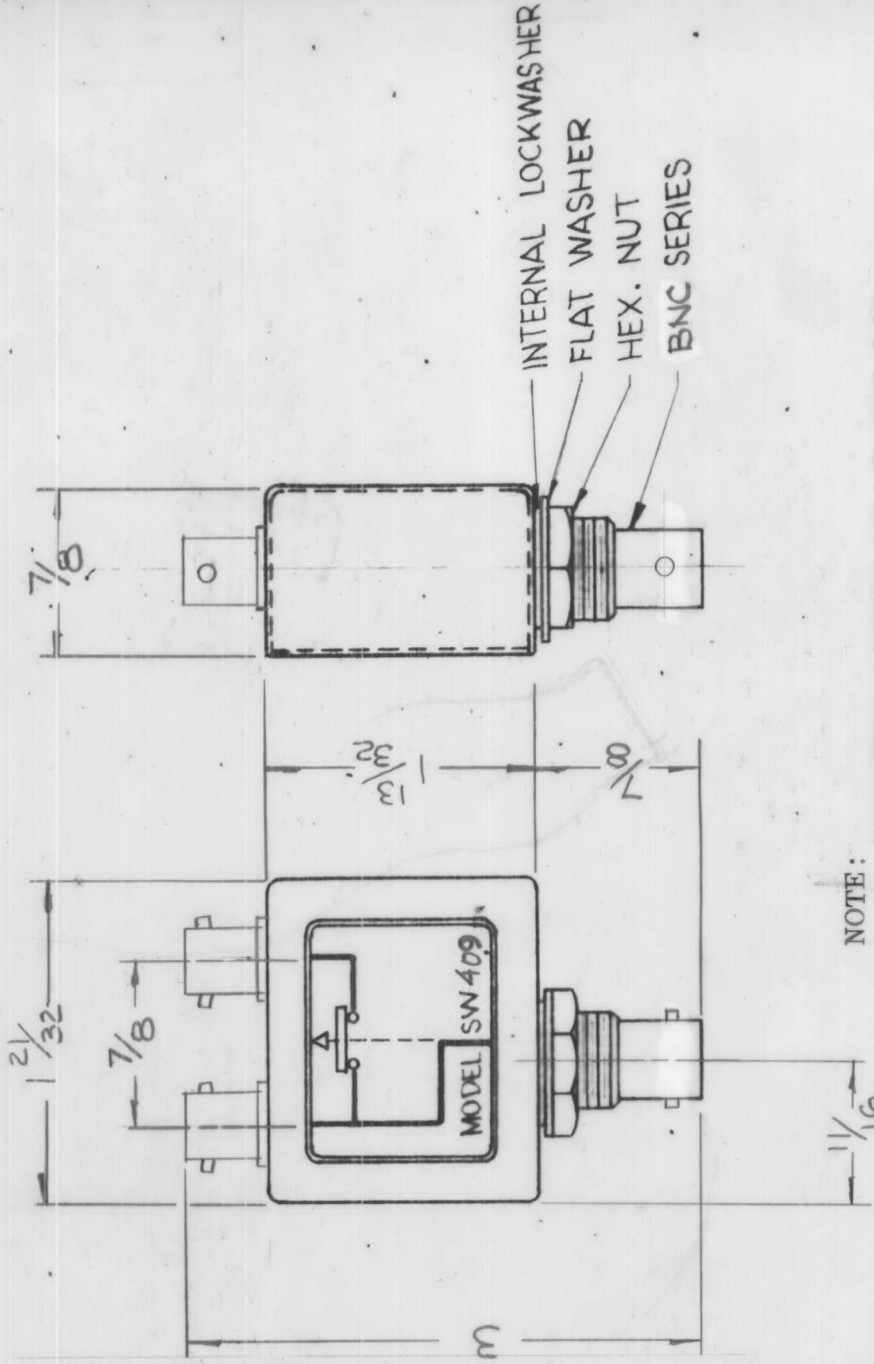
USED ON

ASSY. NO.

DATE

8-13-65

SW-409 A



NOTE: ASSIGNED PATENT NO. 2,767,267

NOTES:
 CASE - MATERIAL - BRASS
 FINISH - S115 TMC SMOOTH
 GREY ENAMEL
 CONNECTORS FINISH -
 BODIES - RHODIUM FLASH
 CONTACTS - GOLD FLASH

REQ. ITEM	PART NO.	MARTINENGO DESCRIPTION	SYMBOL
		THE TECHNICAL MATERIEL CORP. MAMARONECK, NEW YORK	
		SWITCH JACK, ASSEMBLY	
		SEE NOTES	
		MATERIAL	
		TYPE & TEMPER	CHECKED
		HEAT TREAT. SPEC.	DRAWN
		SEE NOTES	8/13/65
		FINISH & SPEC. NO.	FINAL APPROVAL
			SW 409 A
			8/17/65
			MECH. DES. APP.
			ELEC. DES. APP.

UNLESS OTHERWISE SPECIFIED:
 DIMENSIONS ARE IN INCHES
 TOLERANCES ON
 FRAC. ± 1/64 DEC. ± .005 ANGLES ± 1/2°

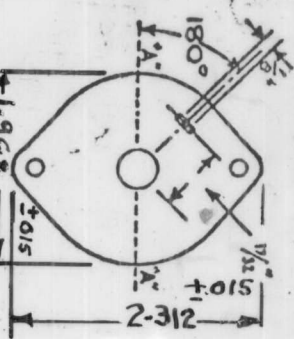
MAXIMUM ALLOWABLE TOLERANCES HAVE BEEN DETERMINED AND ANY DEVIATIONS WILL BE CAUSE FOR REJECTION. REMOVE ALL BURRS AND SHARP EDGES

2A-4334

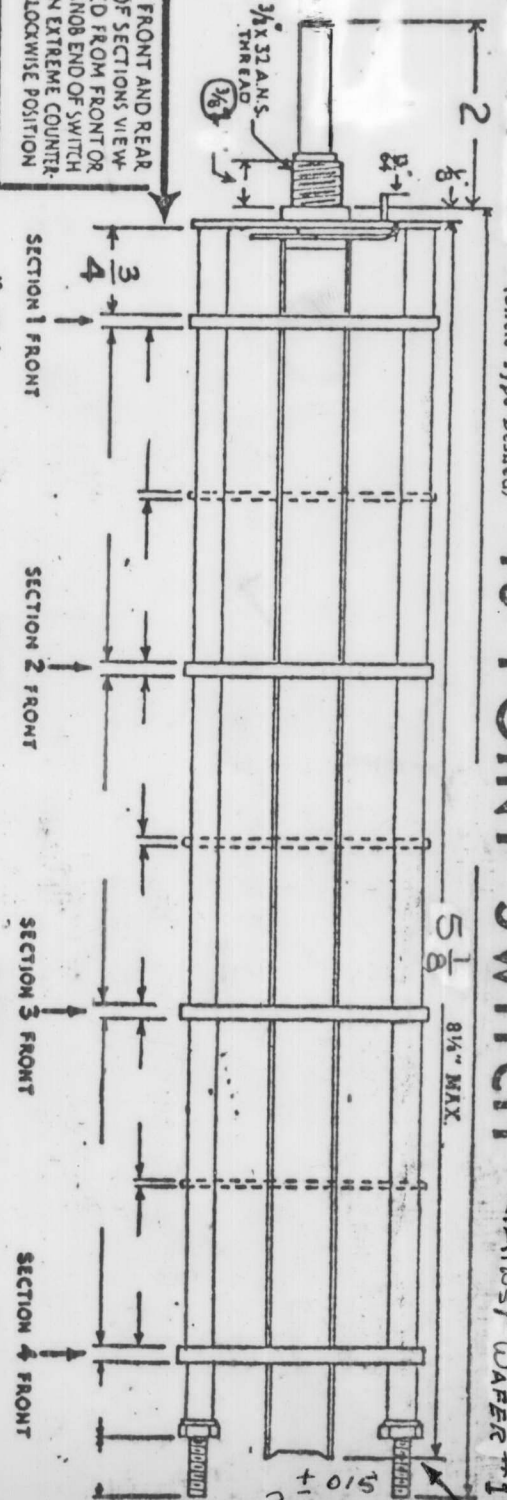
DATE 9/30/65
 CH. NO. 14864
 DRAFTS D.V.V.
 CHECKER Z
 ENG. APP. M.M.

A	5/8 WAS 5/16	9/29/66	16342	802
REV.	CHANGE	DATE	CH. NO.	CHK. APP.

DRAWN FLAT ON ABOVE SHAFT IN EXTREME COUNTER CLOCKWISE POSITION AND SHOW ANGLE IN REFERENCE TO LINE "A-A"



FRONT AND REAR OF SECTIONS VIEWED FROM FRONT OR KNOB END OF SWITCH IN EXTREME COUNTER-CLOCKWISE POSITION

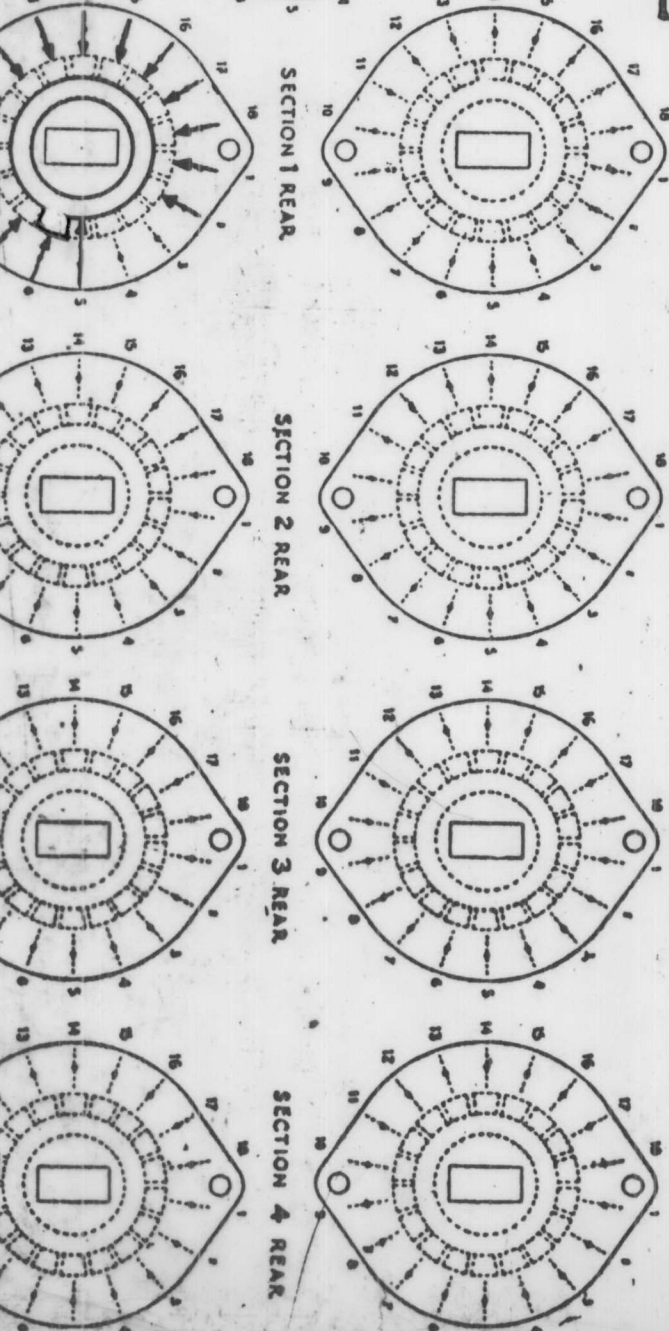


NUMBER OF SECTIONS
 NUMBER OF POSITIONS

1
15

SYMBOLS USED IN MARKING PRINT

- DUMMY TERMINAL LUG
- LONG CLIP
- SHORT CLIP
- THRU CONNECTION OF ROTOR ON FRONT SIDE TO ROTOR ON REAR SIDE
- REVERSED LUG SHORT CLIP
- SHORT CLIP INSULATED FROM CLIP ON OTHER SIDE
- REVERSED LUG LONG CLIP
- LONG INSULATED CLIP



CHECK ALL SPECIFICATIONS BELOW.

- SHORTING TYPE CONTACTS NON-SHORTING
- IF NOT SPECIFIED SHORTING TYPE WILL BE SUPPLIED.
- INSULATION: 1/4" BAKELITE SPECIFY IMPREGNATION IF REQUIRED
- CONTACTS AND ROTORS: SILVER PLATED BRASS SOLID SILVER ALLOY IF NOT SPECIFIED SILVER PLATED BRASS WILL BE SUPPLIED.
- MOUNTING HARDWARE: SUPPLY 3/8" .32 NUTS 1/2" ACROSS FLATS: MATERIAL STEEL PLATING CAD
- STAMP PART NUMBER SW413 3/8" INTERNAL TOOTH LOCKWASHER: MATERIAL " PLATING "
- (NUMBER) ON FRONT PLATE, YES NO

LDL (Circle Type Desired)

18 POINT SWITCH

NOT INSTALLED AGAINST WAFER #1

THE TECHNICAL MATERIEL CORPORATION
 MAMARONECK, NEW YORK

SWITCH: ROTARY
 GBE-8, GBE-9, GBE-10

DATE: 1-17-66 CHKD: [Signature]
 DRAWN: [Signature] APPD: [Signature]
 SHEET OF SW413

M.L. 19/1/81

THE CONTENTS OF THIS DRAWING ARE THE EXCLUSIVE PROPERTY OF THE TECHNICAL MATERIEL CORP. ITS UNAUTHORIZED USE OR REPRODUCTION IN WHOLE OR IN PART IS STRICTLY FORBIDDEN.

REQ. PER UNIT
1

USED ON
MODEL SW421
ASS'Y. NO.
DATE 1/12/66

SW421

A

NOTES:

CASE:

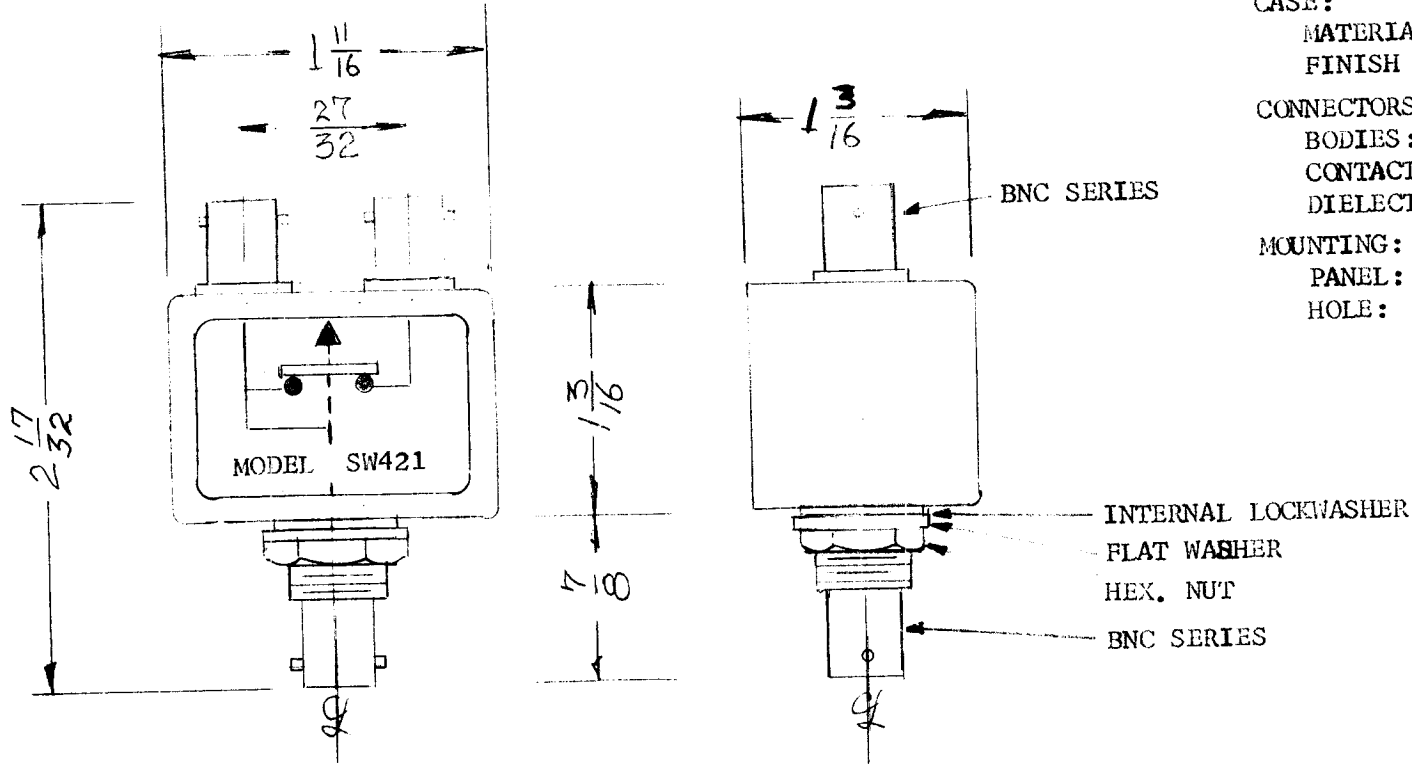
MATERIAL - BRASS
FINISH - TMC SMOOTH GRAY ENAMEL

CONNECTORS:

BODIES: RHODIUM PLATE
CONTACTS: GOLD PLATE
DIELECTRIC: TEFLON

MOUNTING:

PANEL: 3/16 MAXIMUM THICKNESS
HOLE: 1/2 DIAMETER



NOTE:

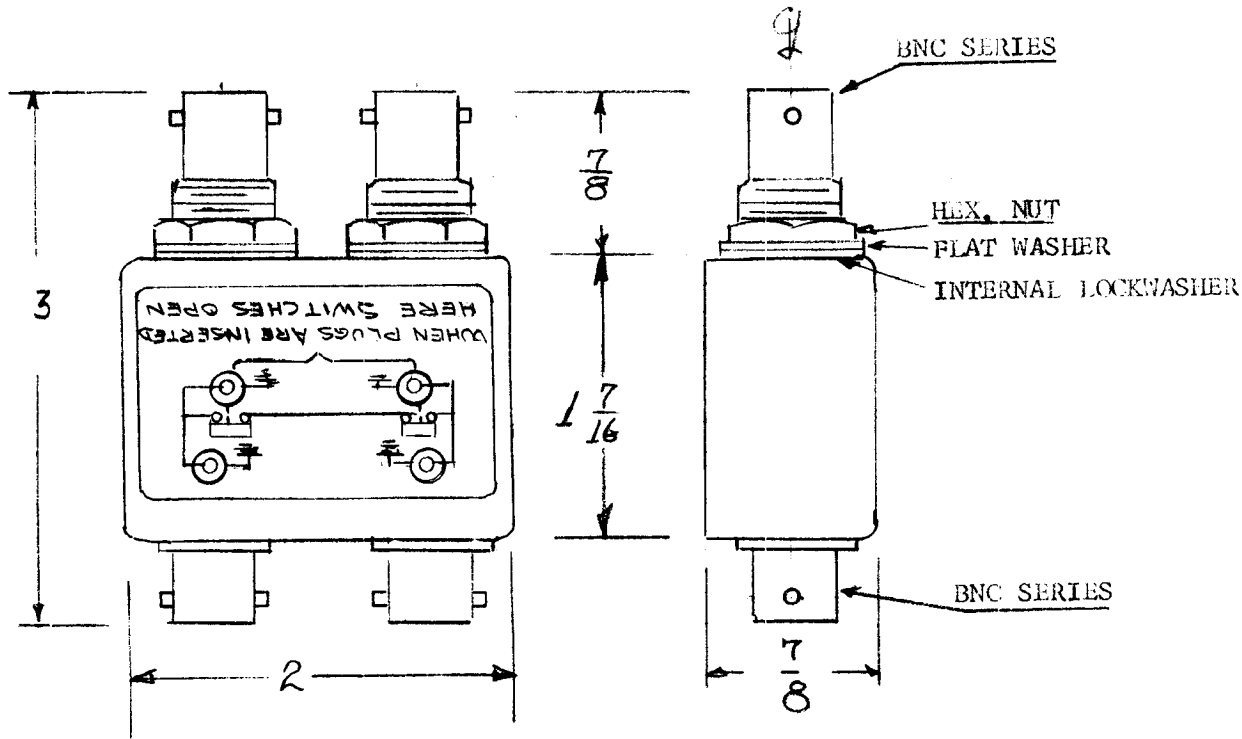
ASSIGNED PATENT NO. 2,767,267

REQ.	ITEM	PART NO.	DESCRIPTION				SYMBOL
		<i>TH</i>	THE TECHNICAL MATERIEL CORP. MAMARONECK, NEW YORK				
		STOCK SIZE	SWITCH JACK, ASSEMBLY				
		SEE NOTES	SINGLE BNC SWITCH, DUAL BNC				
		MATERIAL					
		<i>TH</i>	<i>TH</i>	<i>abg</i>	<i>abg</i>	OCTAVIO <i>[Signature]</i>	
		TYPE & TEMPER	HEAT TREAT. SPEC.	DRAWN	CHECKED	FINAL APPROVAL	
		SEE NOTES					
		FINISH & SPEC. NO.	ELEC. DES. APP.	MECH. DES. APP.			
					SW421	A	

SYM	DESCRIPTION	DATE	CH. NO.	DRAFTS	CHECKER	ENG. APP.
A	CLERICAL CHANGE	9/17/67	A	EG	<i>[Signature]</i>	<i>[Signature]</i>
Ø	ORIGINAL RELEASE	1/12/66	Ø			<i>[Signature]</i>

DECIMALS	TOLERANCES	FRACTIONS	CODE
.X ± .05		± 1/64	2A4460
.XX ± .01		ANGLES	
.XXX ± .005		± 0° 30'	

REQ. PER UNIT	USED ON			SW 422	Ø
	MODEL	ASS'Y. NO.	DATE		
16	SW 422	A-4451	1-28-65		



NOTES:
CASE -
 MATERIAL: BRASS
 FINISH: TMC SMOOTH
 GREY ENAMEL
CONNECTORS -
 FINISH:
 BODIES - RHODIUM
 FLASH
 CONTACTS - GOLD
 FLASH

REQ. ITEM	PART NO.	DESCRIPTION	SYMBOL
		THE TECHNICAL MATERIEL CORP. MAMARONECK, NEW YORK	
		STOCK SIZE	
Ø	ORIGINAL RELEASE FOR PRODUCTION	5/24/66	CR
SYM	DESCRIPTION	DATE	CH. NO. DRAFTS CHECKER ENG. APP.
	UNLESS OTHERWISE SPECIFIED DIMENSIONS ARE IN INCHES AND INCLUDE CHEMICALLY APPLIED OR PLATED FINISHES	SCALE	AK
	DECIMALS: .X ± .05 .XX ± .01 .XXX ± .005	FRACTIONS ± 1/64 ANGLES ± 0° 30'	CODE AK
	TOLERANCES		
	SEE NOTES	DRAWN	CHECKED
	FINISH & SPEC. NO.	ELEC. DES. APP.	MECH. DES. APP.
		FINAL APPROVAL	
		SW 422	

ML 28 5/29/66

APPLICATION

REVISIONS

QTY	MODEL USED ON	ASSY NO.	LTR	DESCRIPTION	DATE	E.M.N.NO	DRAFT	CHKD	APPD
1	BCT 10KA		X	EXPERIMENTAL RELEASE	8/11/67	X	C.V.		
			Ø	ORIG. RELEASE FOR PROD.	8/18/67	Ø	RG	JDA	

TMC P/N	MFGR.	MFGR PART NUMBER
SW 448	S401-58	CD3-A3-EA-100-480-3

ELECTRICAL SPECIFICATIONS

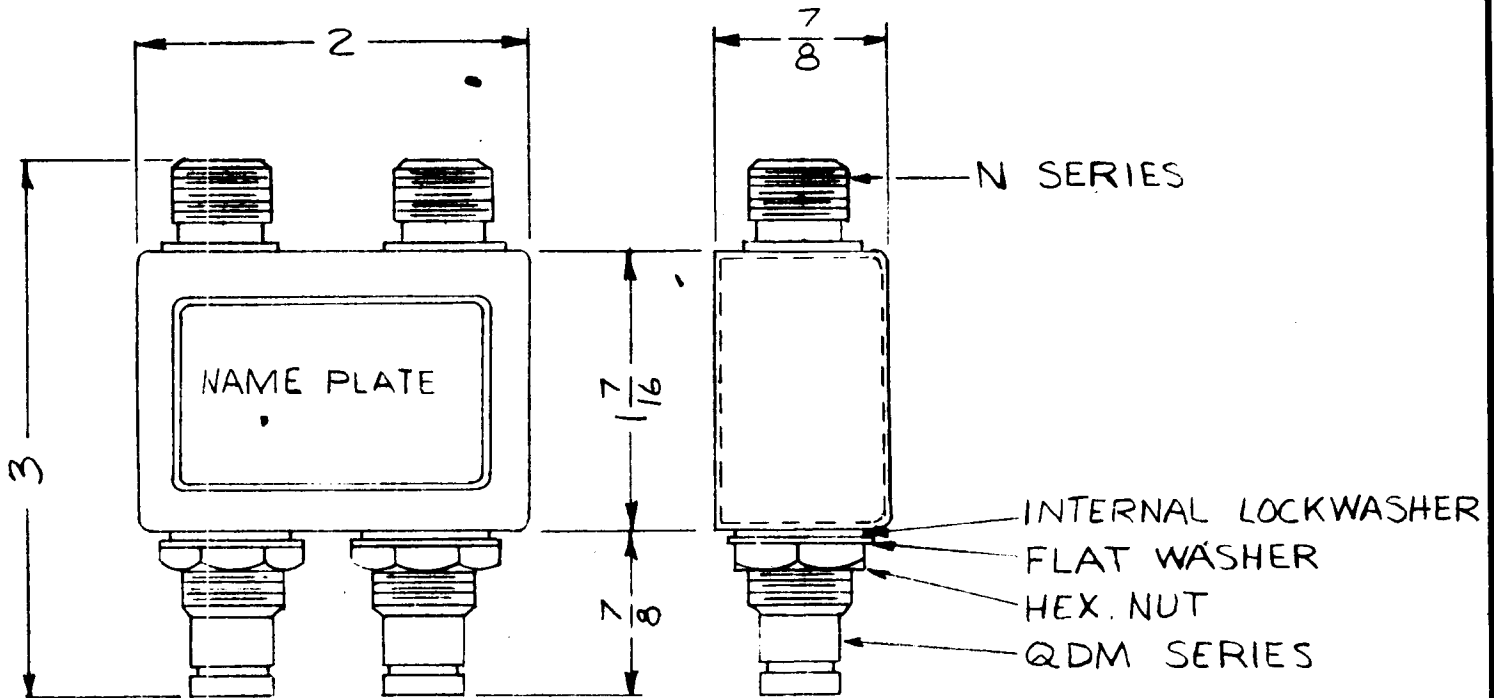
100 AMP
 3 POLE
 480 VAC
 60 HZ
 CURVE: 3

VENDOR MUST SUPPLY FOLLOWING INFORMATION WITH THIS ITEM:

INFORMATION TO CONTAIN SUFFICIENT DATA TO IDENTIFY THE PART AND ESTABLISH ITS ELECTRICAL AND MECHANICAL CHARACTERISTICS AS DESCRIBED IN HIS PUBLISHED CATALOGS FOR QUALITY ASSURANCE
 DIMENSION TOLERANCES WILL BE AS DESCRIBED IN MANUFACTURES LITERATURE.

UNLESS OTHERWISE SPECIFIED DIMENSIONS ARE IN INCHES AND INCLUDE CHEMICALLY APPLIED OR PLATED FINISHES		REQ'D ITEM	PART NUMBER	DESCRIPTION	SYM.
DECIMALS	FRACTIONS	F. BUDETTI			
X ± .05	1/64	FINAL APPROVED	DATE	LIST OF MATERIAL	
.XX ± .01	TOLS.	<i>BS</i>	8-16-67	THE TECHNICAL MATERIEL CORP.	
.XXX ± .005	ANGLES	MECH. DES.	DATE	MAMARONECK, NEW YORK	
	0°-30°	<i>RT</i>	8-11-67	BREAKER, CIRCUIT	
MATERIAL		ELECT. DES.	DATE		
FINISH		CHECKED	DATE		
		<i>C.V.</i>	8/11/67		
		DRAWN	DATE		
		<i>JDA</i>	8/10/67		
NOTICE TO PERSONS RECEIVING THIS DRAWING		SIZE	CODE IDENT. NO.	DWG NO.	ISSUE
THE TECHNICAL MATERIEL CORPORATION claims proprietary right in the material disclosed hereon. This drawing is issued in confidence for engineering information only and may not be reproduced or used to manufacture anything shown hereon without permission from THE TECHNICAL MATERIEL CORPORATION to the user. This drawing is loaned for mutual assistance and is subject to recall at any time.		A	82679	SW 448	Ø
		SCALE	SHEET	OF	

APPLICATION			REVISIONS						
QTY	MODEL USED ON	ASS'Y NO.	LTR	DESCRIPTION	DATE	E.M.N.NO	DRAFT	CHKD	APPD
	SPP 47616		X	EXP. RELEASE		+	HS		
			Ø	ORIGINAL RELEASE		Ø	CV		



SPECIFICATIONS:
CASE-MATERIAL-BRASS
FINISH-SI15 TMC SMOOTH
GREY ENAMEL
CONNECTORS-FINISH
BODIES-RHODIUM FLASH
CONTACTS-GOLD FLASH

UNLESS OTHERWISE SPECIFIED DIMENSIONS ARE IN INCHES AND INCLUDE CHEMICALLY APPLIED OR PLATED FINISHES		REQ'D	ITEM	PART NUMBER	DESCRIPTION	SYM.
DECIMALS .X ± .05 .XX ± .01 .XXX ± .005		A. MARTINENGO		LIST OF MATERIAL		
FRACTIONS 1/64 ANGLES 0° 30'		FINAL APPROVAL		THE TECHNICAL MATERIEL CORP.		
MATERIAL		MECH. DES.		MAMARONECK, NEW YORK		
FINISH		ELECT. DES.		SWITCH JACK 70 OHM ASSEMBLY		
2A4709		CHECKED		DUAL N TO DUAL QDM		
NOTICE TO PERSONS RECEIVING THIS DRAWING THE TECHNICAL MATERIEL CORPORATION claims proprietary right in the material disclosed hereon. This drawing is issued in confidence for engineering information only and may not be reproduced or used to manufacture anything shown hereon without permission from THE TECHNICAL MATERIEL CORPORATION to the user. This drawing is loaned for mutual assistance and is subject to recall at any time.		DRAWN		SIZE A	CODE IDENT. NO. 82679	DWG NO. SW 458
				SCALE		ISSUE Ø
				SHEET OF		

APPLICATION			REVISIONS						
QTY	MODEL USED ON	ASSY NO.	LTR	DESCRIPTION	DATE	E.M.N.NO	DRAFT	CHKD	APPD
1 EA	LPA-2		X	EXPERIMENTAL RELEASE	12/6/67		C.V.		
			X	ORIGINAL RELEASE	12/7/67				
			A	MFGR CAT # ADDED	12/19/67	C.C.	C.V		VFB

TMC P/N	MFGR (TMC CODE #)	CURRENT RATINGS	POLES	MATERIAL	MFGR CAT #
SW461-1	S401-461	15 AMP	1	MOULDED PLASTIC	015
SW461-2	S401-461	20 AMP	1	MOULDED PLASTIC	020

PURCHASING NOTE: VENDOR MUST INCLUDE THE FOLLOWING INFORMATION WHEN SHIPPING THIS ITEM TO TMC.

1. AN OUTLINE DRAWING OR ILLUSTRATION FROM CATALOG SHOWING ALL PERTINENT DIMENSIONS AND TOLERANCES .
2. ELECTRICAL AND/OR MECHANICAL SPECIFICATIONS AS SHOWN IN THEIR CATALOGS.

UNLESS OTHERWISE SPECIFIED DIMENSIONS ARE IN INCHES AND INCLUDE CHEMICALLY APPLIED OR PLATED FINISHES	REQ'D ITEM	PART NUMBER	DESCRIPTION	SYM.
DECIMALS .X ± .05 TOLS. 1/64 .XX ± .01 ANGLES .XXX ± .005 0° .30'	F. BUDETTI			
MATERIAL	FINAL APPROV. <i>[Signature]</i>	12/1/67	LIST OF MATERIAL	
FINISH	MECH. DES. <i>[Signature]</i>	DATE 12/7	THE TECHNICAL MATERIEL CORP.	
	ELECT. DES.	DATE	MAMARONECK, NEW YORK	
	CHECKED <i>[Signature]</i>	DATE 12-7-67	CIRCUIT, BREAKER	
	DRAWN CV	DATE		

NOTICE TO PERSONS RECEIVING THIS DRAWING		SIZE	CODE IDENT. NO.	DWG NO.	ISSUE
THE TECHNICAL MATERIEL CORPORATION claims proprietary right in the material disclosed hereon. This drawing is issued in confidence for engineering information only and may not be reproduced or used to manufacture anything shown hereon without permission from THE TECHNICAL MATERIEL CORPORATION to the user. This drawing is loaned for mutual assistance and is subject to recall at any time.		A	82679	SW 461	A
		SCALE	M/L CA	SHEET	OF

APPLICATION			REVISIONS						
QTY	MODEL USED ON	ASSY NO.	ITR	DESCRIPTION	DATE	E.M.N.NO	DRAFT	CHKD	APPD
1	BCT-10KA		X	EXPERIMENTAL RELEASE	7/28/67		C.V.		
			Ø	ORIG. RELEASE FOR PROD.	7-15-68		R.G.		

TMC P/N: SW462
 MFGR P/N: QJ3-B150
 MFGR (TMC CODE #): S401-88

SPECIFICATIONS

POLES: 3
 VOLTS: 240 AC
 AMPS: 150
 FRAME: EQ-225

PURCHASING NOTE: VENDOR MUST INCLUDE THE FOLLOWING INFORMATION WHEN SHIPPING THIS ITEM TO TMC.

1. AN OUTLINE DRAWING OR ILLUSTRATION FROM CATALOG SHOWING ALL PERTINENT DIMENSIONS AND TOLERANCES.
2. ELECTRICAL AND/OR MECHANICAL SPECIFICATIONS AS SHOWN IN THEIR CATALOGS.

UNLESS OTHERWISE SPECIFIED DIMENSIONS ARE IN INCHES AND INCLUDE CHEMICALLY APPLIED OR PLATED FINISHES	REQ'D	ITEM	PART NUMBER	DESCRIPTION	SYM.
DECIMALS				LIST OF MATERIAL	
FRACTIONS					
.X ± .05 TOLS. 1/64 ANGLES 0°-30'				THE TECHNICAL MATERIEL CORP.	
				MAMARONECK, NEW YORK	
MATERIAL				CIRCUIT, BREAKER	
FINISH					

NOTICE TO PERSONS RECEIVING THIS DRAWING THE TECHNICAL MATERIEL CORPORATION claims proprietary right in the material disclosed hereon. This drawing is issued in confidence for engineering information only and may not be reproduced or used to manufacture anything shown hereon without permission from THE TECHNICAL MATERIEL CORPORATION to the user. This drawing is loaned for mutual assistance and is subject to recall at any time.		SIZE A	CODE IDENT. NO. 82679	DWG NO. SW 462	ISSUE Ø
SCALE		SHEET	OF		

APPLICATION			REVISIONS						
QTY	MODEL USED ON	ASSY NO.	LTR	DESCRIPTION	DATE	F M N NO	DRAFT	CHKD	APPD
1	AP 128A		X	EXPERIMENTAL RELEASE	2/15/68		C.V.		
			Ø	ORIGINAL RELEASE FOR PROD.	2/21/68		C.V.		

MFGR (TMC CODE NO): S401-58
 MFGR CATALOG NO: JA2-226-1 2 POLE

SPECIFICATIONS

RIGHT POLE

SERIES TRIP
 .5 ADC CURVE 3 DC
 CONTACTS INSULATED FOR 50VDC
 1 SET OF AUX CONTACTS

LEFT POLE

RELAY TRIP
 .250 ADC CURVE 3 DC
 RELAY TRIP COIL
 INSULATED FOR 400VDC

HANDLE AND HANDLE TIES TO BE BLACK

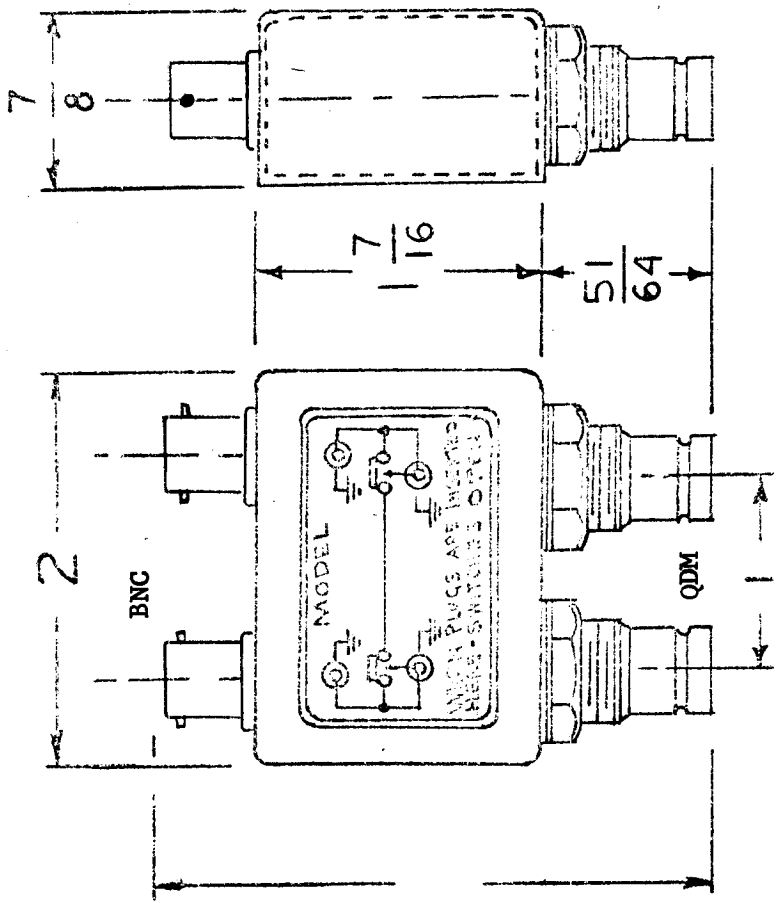
PURCHASING NOTE: VENDOR MUST INCLUDE THE FOLLOWING INFORMATION WHEN SHIPPING THIS ITEM TO TMC.

1. AN OUTLINE DRAWING OF ILLUSTRATION FROM CATALOG SHOWING ALL PERTINENT DIMENSIONS AND TOLERANCES.
2. ELECTRICAL AND/OR MECHANICAL SPECIFICATIONS AS SHOWN IN THEIR CATALOGS.

UNLESS OTHERWISE SPECIFIED DIMENSIONS ARE IN INCHES AND INCLUDE CHEMICALLY APPLIED OR PLATED FINISHES	REQ'D	ITEM	PART NUMBER	DESCRIPTION	SYM.
DECIMALS X ± .05 XX ± .01 XXX ± .005					
FRACTIONS 1/64 ANGLES 0°-30°					
MATERIAL					
FINISH					
F. BUDETTI			LIST OF MATERIAL		
FINAL	DATE	2/15/68			
MECH. DES.	DATE	2/15/68			
ELECT. DES.	DATE	2/15/68			
CHECKED	DATE	2/15/68			
DRAWN	DATE	2-15-68			
THE TECHNICAL MATERIEL CORP.			MAMARONECK, NEW YORK		
CIRCUIT, BREAKER					

NOTICE TO PERSONS RECEIVING THIS DRAWING THE TECHNICAL MATERIEL CORPORATION claims proprietary right in the material disclosed hereon. This drawing is issued in confidence for engineering information only and may not be reproduced or used to manufacture anything shown hereon without permission from THE TECHNICAL MATERIEL CORPORATION to the user. This drawing is loaned for mutual assistance and is subject to recall at any time.		SIZE A	CODE IDENT. NO. 82679	DWG NO. SW 465	ISSUE
SCALE		SHEET	OF		

APPLICATION			REVISIONS						
QTY	MOD# USED ON	ASSY NO.	LTR	DESCRIPTION	DATE	E.M.N.O	DRAFT	CHKD	APPD
X	SW-477	A	Ø	ORIGINAL RELEASE	9/26/69	Ø	AM		Ø
16	SPP34416	A5600 A	A	ADDED ASS'Y REF.	6/11/74	A	Ø	Ø	Ø



PROVISIONAL DATA

Max. peak volt. 500V
 Freq. limit 0-32MHz
 Nom. Impedance 75 ohms

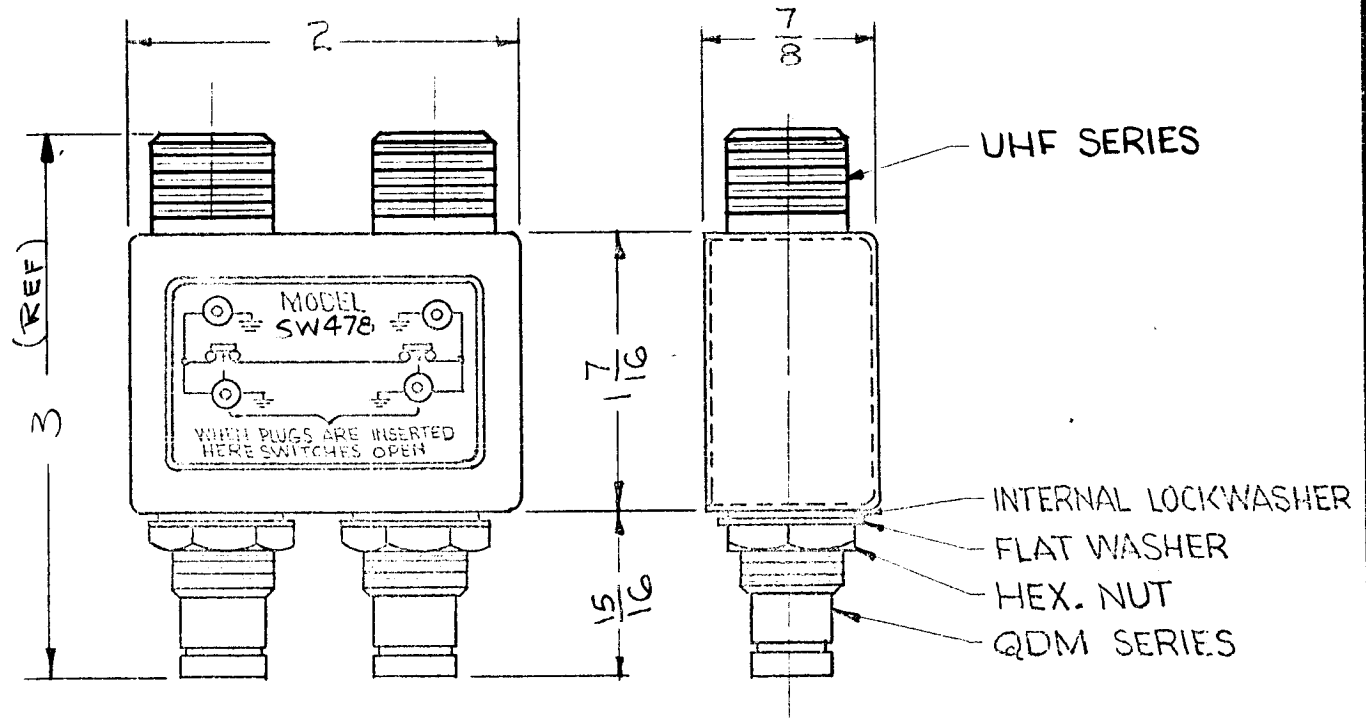
- NOTES:**
- (1) CAUTION: Use only 75 ohm mating series connectors
 - (2) ASSIGNED: Patent No. 2,767,267
 - (3) MOUNTING: Internal Lockwasher; flat washer; Hex Nut 1/2 x 32 threads; 17/32 dia. hole; 5/16 thick material
 - (4) CASE: Material Brass per QQ-B-626
 Finish Grey Enamel per TMC S-115
 - (5) CONNECTORS: Body Silver Flash per QQ-5-365 Type II Grade B
 Dielectric Rhodium Flash per MIL-R-46085 Type I Class 2
 Contacts Teflon per MIL-F-19468; Virgin
 Finish Bryllium Copper per QQ-C-530 Condition H3
 Gold Flash per MIL-G-45204 Type II Class 1

UNLESS OTHERWISE SPECIFIED DIMENSIONS ARE IN INCHES AND INCLUDE CHEMICALLY APPLIED OR PLATED FINISHES	REQ'D ITEM	PART NUMBER	DESCRIPTION	SYM.
DECIMALS FRACTIONS	LIST OF MATERIAL			
.X ± .05 TOLS. 1/64	THE TECHNICAL MATERIEL CORP.			
.XX ± .01 ANGLES	MAMARONECK, NEW YORK			
.XXX ± .005 0°-30°	SWITCH R. F. NORMAL THRU, SELF LOOP QDM TO BNC			
MATERIAL	SEE NOTES			
FINISH	SEE NOTES			
DRAWN: [Signature] DATE: 6-4-69				
CHECKED: [Signature] DATE: 6-4-69				
ELECT. DES.: [Signature] DATE: 6-4-69				
MECH. DES.: [Signature] DATE: 6-4-69				
FINAL APPROVAL: [Signature] DATE: 6-26-69				
MARLINENGO M				
SIZE A CODE IDENT. NO. DWG NO. SW-477				
SCALE OF SHEET OF				
ISSUE A				

NOTICE TO PERSONS RECEIVING THIS DRAWING
 THE TECHNICAL MATERIEL CORPORATION claims proprietary right in the material disclosed hereon. This drawing is issued in confidence for engineering information only and may not be reproduced or used to manufacture anything shown hereon without permission from THE TECHNICAL MATERIEL CORPORATION to the user. This drawing is loaned for mutual assistance and is subject to recall at any time.

THE CONTENTS OF THIS DRAWING ARE THE EXCLUSIVE PROPERTY OF THE TECHNICAL MATERIEL CORP. ITS UNAUTHORIZED USE OR REPRCDUCTION IN WHOLE OR IN PART IS STRICTLY FORBIDDEN.

REQ. PER UNIT	USED ON			SW 478	Ø
	MODEL	ASSY. NO.	DATE		
	SW 478				



NOTES:

- CASE - MATERIAL-BRASS
- FINISH - S115 TMC SMOOTH
- GREY ENAMEL
- CONNECTORS - FINISH
- BODIES - RHODIUM FLASH
- CONTACTS - GOLD FLASH

NOTE: ASSIGNED PATENT NO. 2,767,267

REQ.	ITEM	PART NO.	DESCRIPTION	SYMBOL
			THE TECHNICAL MATERIEL CORP. MAMARONECK, NEW YORK	
Ø	ORIG. RELEASE FOR PROD	5/29/68	RG.	HQ
X	EXP. RELEASE	5/17/68	HG.	
			STOCK SIZE	
			SEE NOTES	
			MATERIAL	
			TYPE & TEMPER	
			HEATTREAT. SPEC.	
			DRAWN	CHECKED
				FINAL APPROVAL
			SEE NOTES	
			FINISH & SPEC. NO.	
			ELEC. DES. APP.	MECH. DES. APP.
				SW 478 Ø

UNLESS OTHERWISE SPECIFIED:

DIMENSIONS ARE IN INCHES
TOLERANCES ON

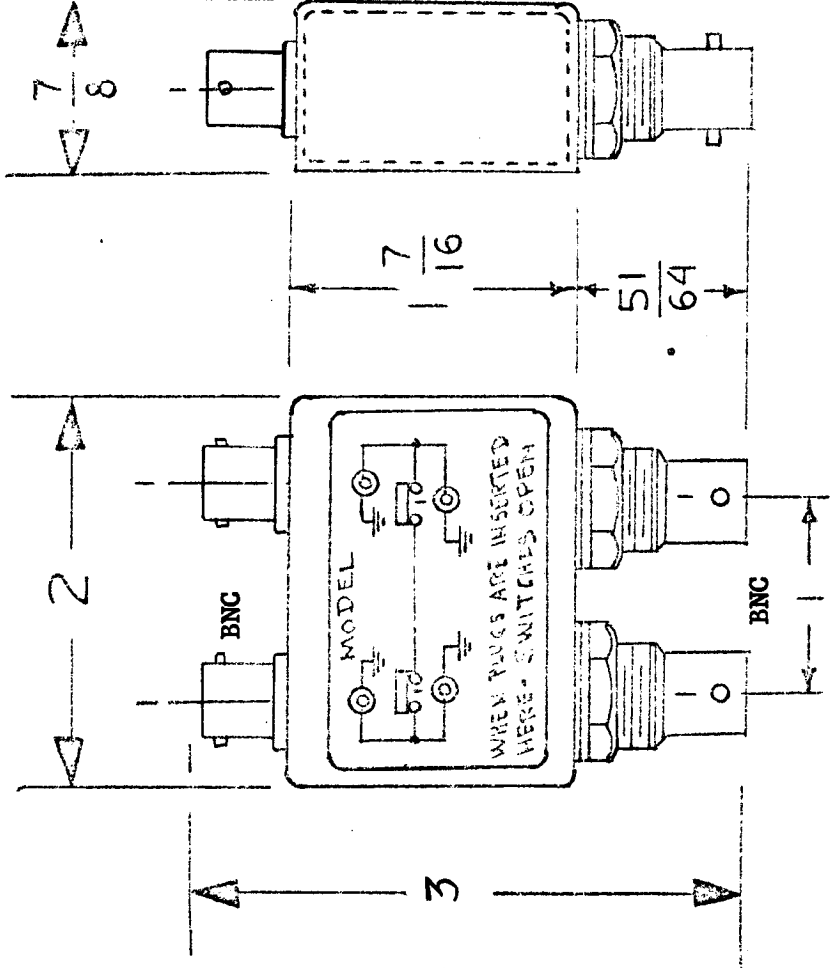
FRAC. ± 1/64 DEC. ± .005 ANGLES ± 1/2°

2A-
MAXIMUM ALLOWABLE TOLERANCES HAVE BEEN DETERMINED AND ANY DEVIATIONS WILL BE CAUSE FOR REJECTION. REMOVE ALL BURRS AND SHARP EDGES

APPLICATION

REVISIONS

QTY	MODEL USED ON	ASSY NO.	ITR	DESCRIPTION	DATE	E.M.N.O	DRAFT	CHKD	APPD
X	SW-489	A	✓	ORIGINAL RELEASE	9/6/69	✓	AM		✓
16	SPP-44416								



ELECTRICAL DATA

Max. peak volt. 500V
 Freq. limit 0-32MHz
 Nom. Impedance 75 ohms

NOTES:

- (1) CAUTION: Use only 75 ohm mating series connectors Patent No. 2,767,267
- (2) ASSIGNED: Internal Lockwasher; flat washer; Hex Nut 1/2 X 32 threads; 17/32 dia. hole; 5/16 thick material
- (3) MOUNTING: Material Brass; Finish Grey Enamel; Body Silver Flash; Dielectric Rhodium Flash; Contacts Teflor; Finish Bryllium Copper; Gold Flash
- (4) CASE: per QQ-B-626
- (5) CONNECTORS: per TMC S-115; per QQ-5-365 Type II Grade B; per MIL-R-46085 Type I Class 2; per MIL-P-19468; Virgin; per QQ-C-530 Condition HT; per MIL-G-45204 Type II Class I

UNLESS OTHERWISE SPECIFIED DIMENSIONS ARE IN INCHES AND INCLUDE CHEMICALLY APPLIED OR PLATED FINISHES	REQ'D	ITEM	PART NUMBER	DESCRIPTION	SYM.
DECIMALS					
FRACTIONS					
.X ± .05					
.XX ± .01					
.XXX ± .005					
1/64					
TOLS.					
ANGLES					
0° .30'					
MATERIAL					
SEE NOTES					
FINISH					
SEE NOTES					
LIST OF MATERIAL					
THE TECHNICAL MATERIEL CORP. MAMARONECK, NEW YORK					
SWITCH R. F. NORMAL-THRU, SELF LOOP BNC TO BNC					
SIZE	CODE IDENT. NO.	DWG NO.	ISSUE		
A	82679		SW-489		
SCALE			SHEET	OF	

NOTICE TO PERSONS RECEIVING THIS DRAWING
 THE TECHNICAL MATERIEL CORPORATION claims proprietary right in the material disclosed hereon. This drawing is issued in confidence for engineering information only and may not be reproduced or used to manufacture anything shown hereon without permission from THE TECHNICAL MATERIEL CORPORATION to the user. This drawing is loaned for mutual assistance and is subject to recall at any time.