

# TMC SPECIFICATION

NO. S 1310

REV: 0

COMPILED: / CHECKED: / APPD: *OB* SHEET OF

TITLE:

KIT-345-1A Peak Reading Wattmeter Kit

# TMC SPECIFICATION

NO. S 1310

REV:

COMPILED:

CHECKED:

APPD:

SHEET /

OF

5

TITLE: KIT-345-1A PEAK READING WATTMETER KIT

## A. Purpose:

1. Provides peak reading wattmeter.

## B. Materials Supplied:

<u>ITEM NO.</u>	<u>QUANTITY</u>	<u>DESCRIPTION</u>
1.	1	Amp. Chassis
2.	1	MS-6415, Cover Plate
3.	1	CA1735, Cable
4.	1	TS-12A, Switch
5.	1	TE-129, Ground Lug
6.	4	SCBP0832BN10, Screw
7.	4	NTH0832BN10, Nut
8.	4	LWS08MRN, Lock Washer
9.	1	4 inch, MWC22(7)U-0
10.	1	LD2536, Sw. Plate
11.	10	CU-142-11, Tie Wrap
12.	1	CU-102-SN, Clamp
*13.	1	LD2535, Meter Face Plate
14.	1	CK1969, Schematic

\* Do not supply this item if this Kit is used in conjunction with Kit ~~161-B.~~

# TMC SPECIFICATION

NO. S 1310

REV:

COMPILED:

CHECKED:

APPD:

SHEET 2 OF 5

TITLE: KIT-345-1A PEAK READING WATTMETER KIT

## C. Tools Required:

1. Soldering iron'
2. Medium Phillips screwdriver
3. Pliers, diagonal cutting
4. Pliers, long nose
5. Flat blade screwdriver
6. 15/32 inch drill bit
7. 13/64 inch drill bit

## D. PROCEDURE:

1. TURN OFF ALL AC POWER TO TRANSMITTER.
2. Remove all (5) mounting screws from P.A. meter panel and lower panel away from frame.
3. Using Item 2 (MS-6415) as a template, locate and drill (4) 13/64 holes in upper left hand side of meter box, refer Fig. 1.
4. Place Item 2 (cover plate) over open side of Item 1 (Amp. chassis), then mount chassis to upper left rear of meter box, using Items 6, 7, 8. NOTE: Mount chassis with connectors facing down, also omit Items 6, 7, 8 from upper right mounting hole in chassis.
5. Locate and drill a 15/32 inch hole, 2 inches to the left and in line with S-1014, PA light switch.
6. Place Item 5 (ground lug) over threaded end of Item 4 (switch). Install switch into hole drilled in Step #5 with ON side up. Item 10 (Decal Plate) over threaded end peak end up. Wire ground lead from switch to ground lug, (Item 9) Refer Fig. 2.
- \* 7. Remove MR-170 (Output Wattmeter) from Meter Panel. Carefully remove front of meter case. Replace meter face with Item 13 (meter faceplate). Replace meter cover.
- X 8. Reinstall meter in meter panel.\* NOTE; Omit steps 7 & 8 if this Kit is used in conjunction with KIT-161B.

# TMC SPECIFICATION

No. S 1310

REV:

COMPILED:

CHECKED:

APPD:

SHEET 3 OF 5

TITLE: KIT 345-1A PEAK READING WATTMETER KIT

9. Disconnect existing (2) meter leads from output meter, (Do not remove black lead going to chassis ground). Tape ends of leads and dress into cable.
  10. Connect connector end of cable Item 3 to Amp chassis. Place clamp (Item 12) on cable and with Items 6, 7, 8 mount to open mounting hole on Amp chassis. Refer Fig. 4, dress cable as shown in Fig. 4, using Tie Wraps, Item 11.
  11. Bring 2 meter leads into meter compartment, connect leads to meter, shield to negative side. Refer Fig. 4.
  12. Connect leads marked 2 (purple) & 7 (white) to terminals 2 & 7 located on feedthru box, in lower right hand side of P.A. compartment.
  13. Connect red lead to open terminal on switch installed in Step 6.
  14. Connect black lead to ground lug installed in Step 6.
  15. Remove brown lead with shield from left center terminal of SWR switch (looking at it from the back), located on PA Control Panel. Tape ends of leads and dress into main cable.
  16. Connect remaining lead to the center terminal of SWR switch with shield to ground terminal. Refer Fig. 3.
  17. This completes installation of KIT 345-1A.
  18. Calibration Check:
    - A. Place 2 test tones in upper side band.
    - B. Place peak-average switch in average position.
    - C. Set Transmitter frequency to 6 MC, tune Transmitter into a dummy load, adjust output power to 5kw on average scale.
    - D. Place peak-average switch in peak position. Output meter should indicate approximately 10kw on peak scale. If there is more than  $\pm 200$  watt deviation, adjust meter adjust control J- on Amp chassis until meter indicates 10kw peak.
- NOTE: Care must be taken when making the above adjustments because of the HIGH VOLTAGE present in the P.A. compartment.

# TMC SPECIFICATION

NO. S 1310

REV:

COMPILED:

CHECKED:

APPD:

SHEET

4

OF

5

TITLE:

## FRONT VIEW OF METER BOX

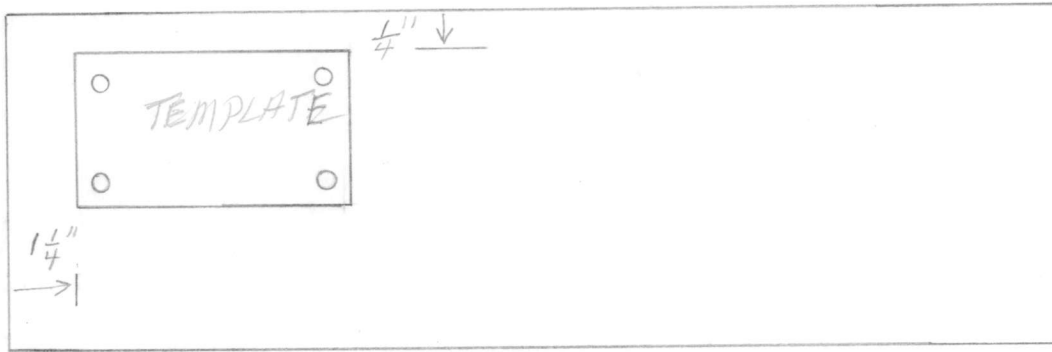


FIG-1

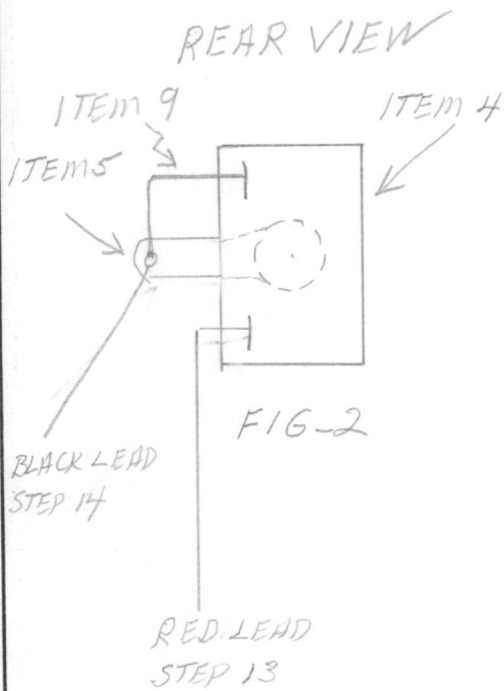


FIG-2

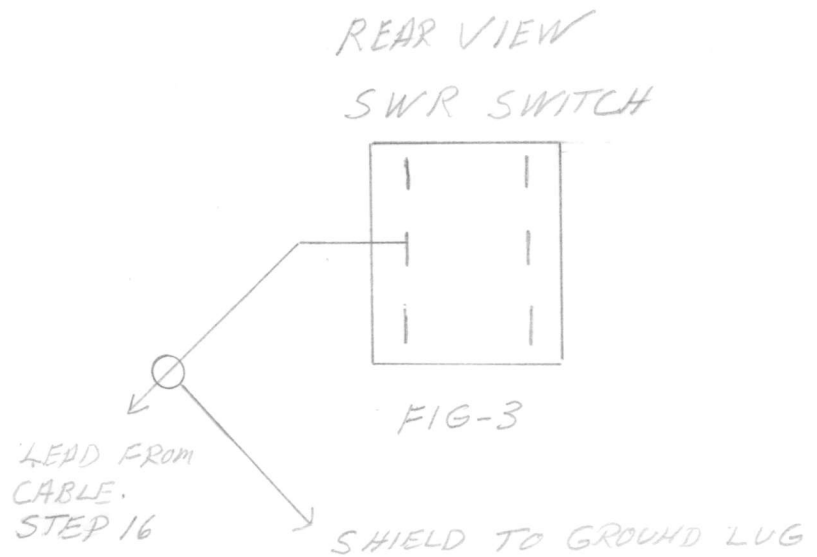


FIG-3

# TMC SPECIFICATION

NO. S 1310

REV:

COMPILED:

CHECKED:

APPD:

SHEET 5

OF 56

TITLE:

REAR VIEW INSIDE P.H

METER LEADS

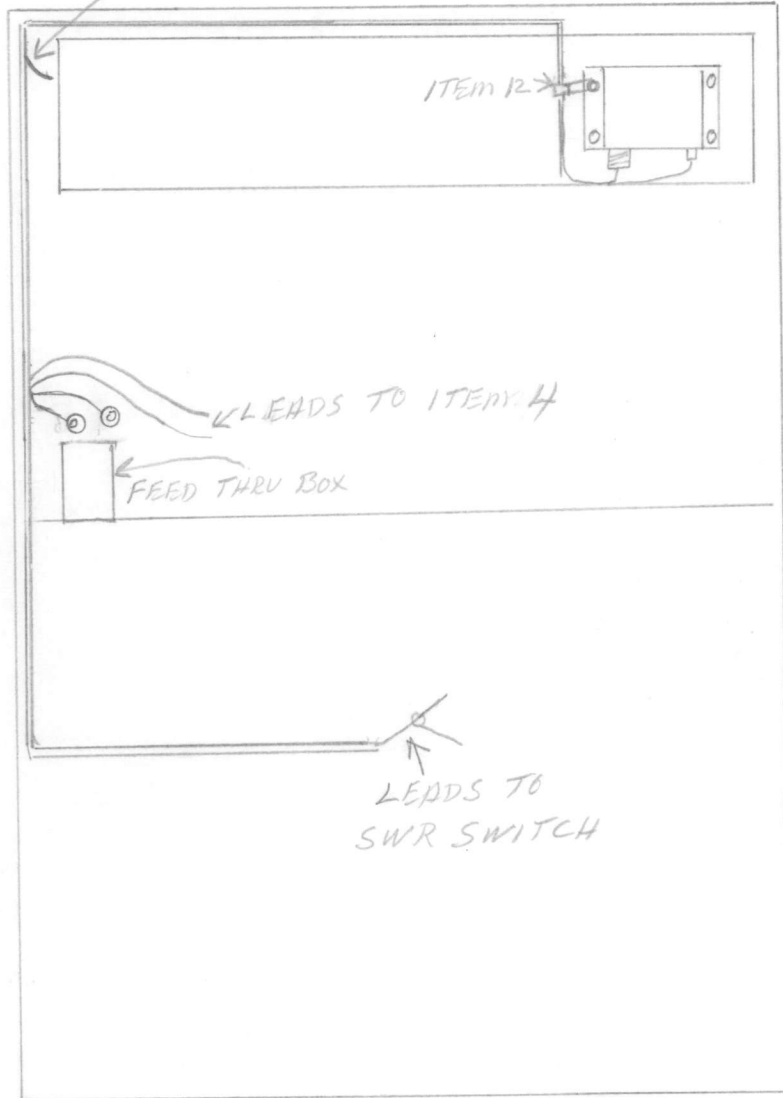


FIG-4

