

# TMC SPECIFICATION

NO. S 1183

REV:

0

COMPILED: ASC

CHECKED:

APPD:

*[Signature]* 4/10/67

SHEET 1 OF 8

TITLE:

3/10/67 jb/

## ANFRT62 40K SECTION

### POWER TRANSFORMER REMOVAL INSTRUCTIONS

# TMC SPECIFICATION

NO. S 1183

REV:

0

COMPILED: ASC

CHECKED:

APPD:

SHEET 2

OF 8

TITLE:

## I. PURPOSE

To remove and replace defective high voltage transformers, T8101, T8102 and/or T8103, from power supply frame, Frame #3, of GPT-200KW Transmitter.

## II. EQUIPMENT AFFECTED

All TMC Model GPT-200KW Transmitters (AN/FRT-62 Series).

## III. MATERIAL SUPPLIED

<u>Item</u>	<u>Qty.</u>	<u>Part No.</u>	<u>Description</u>
1	2		3/8 X 2 X 12 - CRS - BAR
2	2		3/8 X 2 X 24 - CRS - BAR
3	2		3/8 X 2 X 36 - CRS - BAR

## IV. TOOLS REQUIRED (EQUIPMENT)

### A. To Be Provided By Installing Activity

1. Screwdriver , Blade Type
2. Screwdriver, Phillips, #2
3. Screwdriver, Phillips, #3
4. Wrench, 6", Adjustable
5. Wrench, 7/16 X 3/8 Open-End
6. Wrench, 1/2 X 9/16 Open-End
7. Wrench, 5/16 Spintight
8. Crowbars (2) and Platform or Dolly
9. Socket Set 1/2" Dia. Drive
10. Wrench, 3/8 Allen

NOTE: This Tool requirement does not preclude the use of any power equipment (lifts, etc.) if available.

# TMC SPECIFICATION

NO. S 1183

REV:

COMPILED: ASC

CHECKED:

APPD:

SHEET 3 OF 8

TITLE:

## V. PROCEDURE

- A. CAUTION Turn off all power to transmitter and discharge high voltage circuit in prescribed manner.

### REMOVE FOLLOWING ITEMS:

1. Front Trim per Fig. 1. Pg 5
2. Rear Trim per Fig. 2 Pg 5
3. High Voltage Rectifier Drawer per Fig. 1. Pg 5
4. Lower Panel and Brackets per Fig. 1. Pg 5
5. Control Panel and Hardware Tying Cable to Frame and carefully lift and rotate Panel and Tie Panel as per Fig. 3. Pg 6
6. Circuit Breaker Motor per Fig. 4. Pg 6
7. Circuit Breaker per Fig. 4. Pg 6
8. Tie Bar per Fig. 5. Pg 7

### B. Removal of Transformer through front of unit

1. Remove all cables and Buss Bars per Fig. 2 Pg 5
2. Be sure of adequate help and equipment as transformers weigh approx. 530 lbs.
3. Remove front transformer using crowbars place a crowbar on left end. Lift and insert 12" steel pad, Item 1 of materials supplied, then move to other end and do likewise with second piece of Item 1 as per Fig. 6 Pg 7

# TMC SPECIFICATION

NO. S 1183

REV:

COMPILED: ASC

CHECKED:

APPD:

SHEET 4 OF 8

TITLE:

4. Walk transformer carefully onto platform or dolly.  
(If lift is available use as shown per Fig. 7 Pg 8)
5. In removing middle transformer lower studs of 190V, 208, 330V and 250V with adjustable Wrench (Item 4); this is done to clear center bar of frame. Repeat steps 4 and 5 except use 24" steel pad (Item 2 of material supplied). As per Fig 5
6. Rear transformer removal requires the lowering of primary, common, 190V, 208V, 230V and 250V studs. Repeat steps 4 and 5. Except using 36" steel pads (Item 3 of material supplied). As per Fig 5
7. On replacement of transformer the steel pads, as per step involved, are retained. However, in any mobile equipment this is not so, as transformer must be tied down and staked to tie bar and side of frame.
8. Re-assemble equipment in reverse order i.e.,:  
Tie Bar (if req'd. per step 8) Circuit Breaker, Motor and Control Panel; re-connect Buss Bars and Cabling. Check all work done, replace trim, etc. Insert high voltage drawer, Bring equipment to operational status. THIS COMPLETES PROCEDURE

ATTACHED: 1. Pictures of withdrawal and installing of TF-211 from front of Transmitter.

# TMC SPECIFICATION

NO. S 1183

REV:

COMPILED:

CHECKED:

APPD:

SHEET 5

OF 8

TITLE:

HIGH VOLTAGE  
RECTIFIER DRAWER

TRIM TO BE REMOVED

LOWER PANEL

BRACKETS



TRIM SHOWN  
REMOVED

FIG 1

TRIM

BUSS BAR  
CABLES



FIG 2

# TMC SPECIFICATION

NO. S 1183

REV:

COMPILED:

CHECKED:

APPD:

SHEET 6 OF 8

TITLE:

CONTROL PANEL  
TIED DOWN

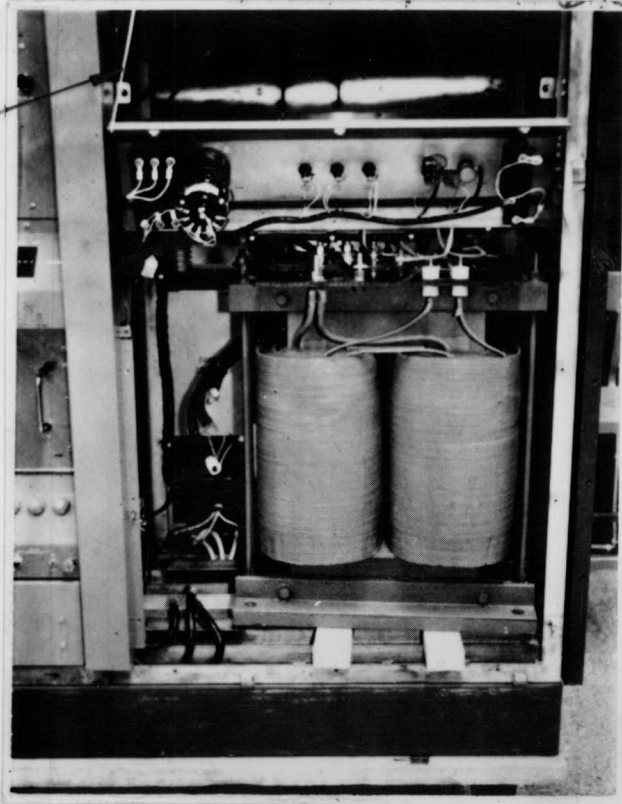


FIG 3

MOTOR  
CIRCUIT  
BREAKER

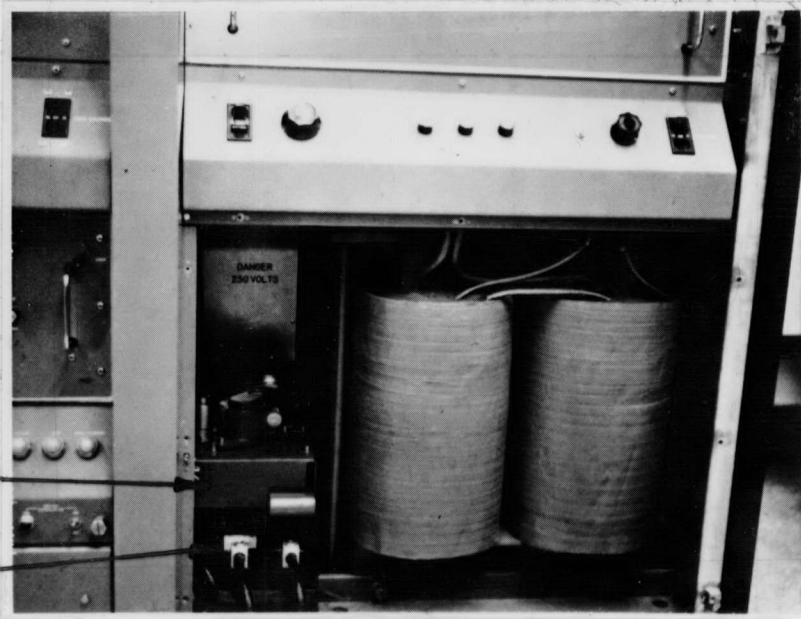


FIG 4

# TMC SPECIFICATION

NO. S 1183

REV:

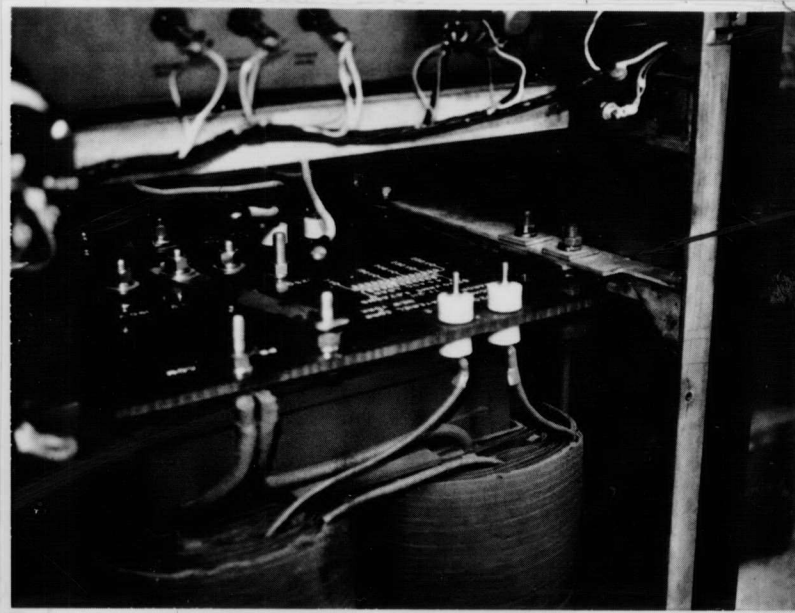
COMPILED:

CHECKED:

APPD:

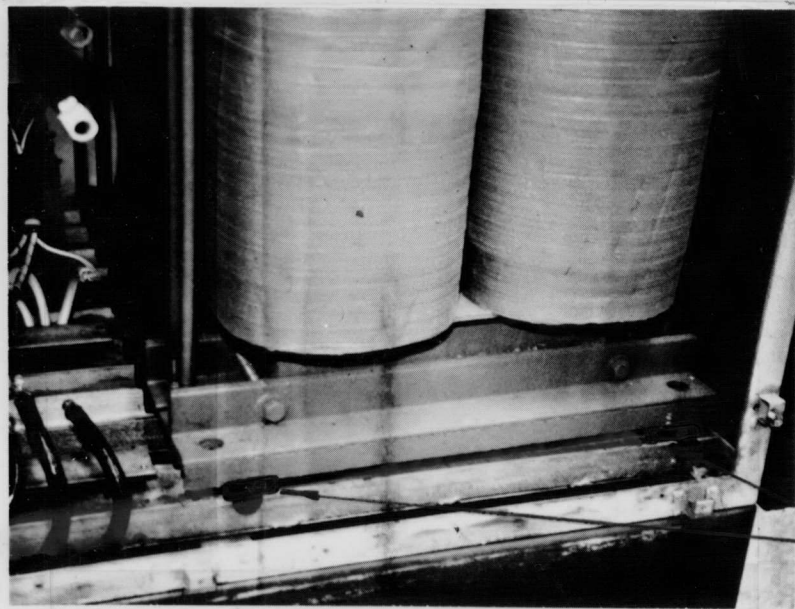
SHEET 7 OF 8

TITLE:



TIE BAR

FIG 5



STRAPS

(ITEM 1 OR 2 OR 3 AS REQUIRED)

FIG 6



# TMC SPECIFICATION

NO. S 1183

REV:

COMPILED:

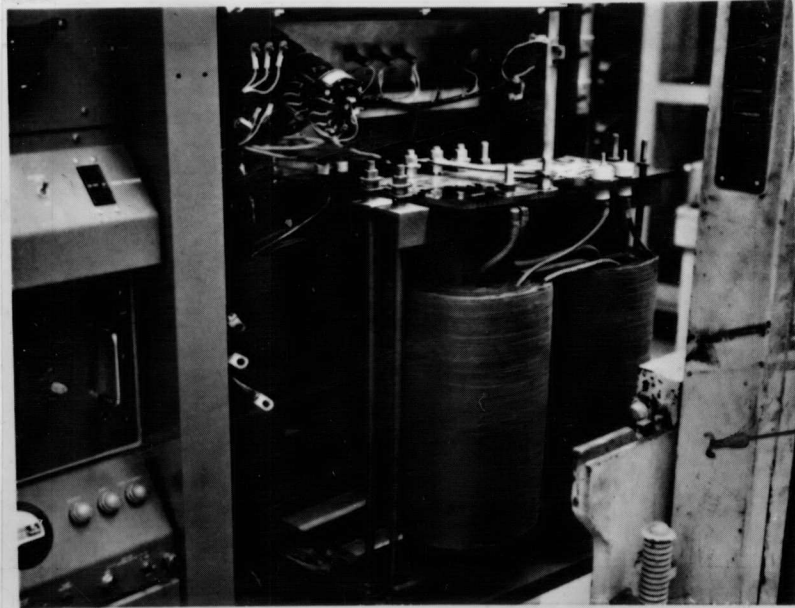
CHECKED:

APPD:

SHEET 8

OF 8

TITLE:



POWER EQUIP.  
IF AVAILABLE

FIG 7



