

TMC SPECIFICATION

NO. S 1169

REV:

COMPILED:

Bel

CHECKED:

APPD:

[Signature]

SHEET 1

OF 3

TITLE:

2/24/67 jb/

TRC-500-50U/600B

TEST PROCEDURE

TMC SPECIFICATION

NO. S 1169

REV:

COMPILED:

CHECKED:

APPD:

SHEET 2

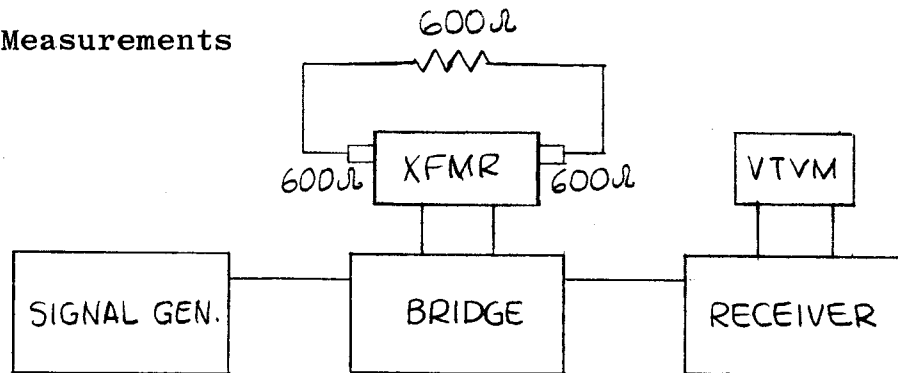
OF 3

TITLE: TRC-500-50U/600B TEST PROCEDURE

TEST EQUIPMENT REQUIRED:

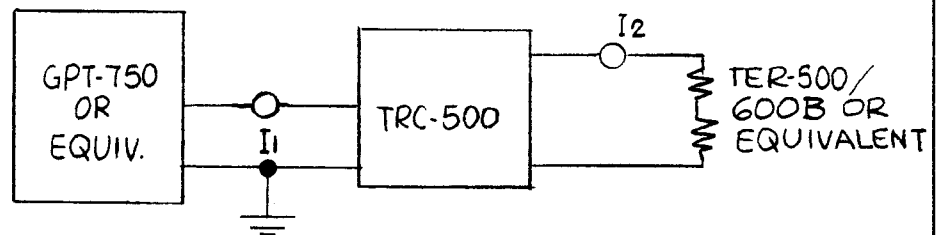
1. R.F. Generator measurement Corp. Mod. 82 or equivalent.
2. R.F. Bridge.
3. General Purpose Receiver Model (GPR92) or equivalent.
4. VTVM
5. 600 ohm load VSWR 1.2 or less.
6. 1, 1A. R.F. Meter. (Internal Thermocouple)
7. 1, 5A. R.F. meters.(Internal Thermocouple)
8. Dummy load TER 500/600B or equivalent.

1. R.F. Bridge Measurements



- a.) Hook up test equipment and Transformer as shown (keeping all terminating leads as short as possible.)
- b.) Resistance and Reactance should *show VSWR 2:1 or better* as plotted on Smith Chart.

2. Power Test



Set up transmitter at 20 Mcs, connect TRC-500 and load to reading of 3.16 amperes at I_1 Record Reading of I_2 .

Test Data
+10%

Load	I_1	I_2
600	3.16A	.9A

TMC SPECIFICATION

NO. S 1169

REV: _____

COMPILED: _____

CHECKED: _____

APPD: *LB*

SHEET 3

OF 3

TITLE: TRC-500-50U/600B TEST PROCEDURE

THE TECHNICAL MATERIEL CORPORATION
MAMARONECK, N.Y.

TRC-500-50U/600B TEST DATA SHEET

SERIAL NO. _____

MFG. NO. _____

TEST 1 BRIDGE MEASUREMENTS

Freq. Mcs.	Resistance	Reactance
2		
4		
8		
12		
16		
20		
24		
28		
30		

VSWR should be within 2:1 as plotted on Smith Chart.

TEST 2 TRANSMITTER LOAD TEST

LOAD	I ₁	I ₂
600	3.16A	

(I₂ = .9A , Tolerance +10%)

DATE: _____

TESTER: _____

