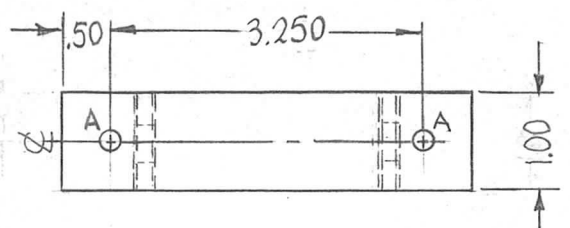
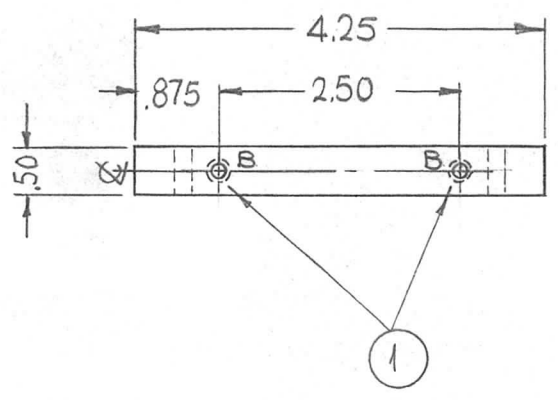


REQ. PER UNIT	USED ON			PX952	Ø
	MODEL	ASS'Y. NO.	DATE		
7	TST-10K		6-25-65		



HOLES	DESCRIPTION	REQ.
A	11/64 DIA. SCREW	2
B	6-32 HELI-COIL	2



		A HOLES	
		NO	
		YES	

						4	1	NT139-SC06-20	INSERT, SCREW THREAD	B	
Ø	ORIGINAL RELEASE FOR PRODUCTION	3-3-66	AA	Jc	<i>CB anc</i>	REQ.	ITEM	PART NO.	F. BUDETTI DESCRIPTION	SYMBOL	
X2	PX952-1 DELETED	8-2-65	X2	<i>SPY</i>				.50 THICK STOCK SIZE	THE TECHNICAL MATERIEL CORP. MAMARONECK. NEW YORK		
X1	3.250 WAS 3-1/4	7-20-65	X1	<i>SPY</i>				G10 EPOXY	SUPPORT, WAFER		
SYM	DESCRIPTION	DATE	CH. NO.	DRAFTS	CHECKER	ENG. APP.	MATERIAL				
UNLESS OTHERWISE SPECIFIED DIMENSIONS ARE IN INCHES AND INCLUDE CHEMICALLY APPLIED OR PLATED FINISHES		SCALE							<i>SPY</i>	<i>CB</i>	<i>May</i>
		1:1							DRAWN	CHECKED	FINAL APPROVAL
DECIMALS .X ± .05 .XX ± .01 .XXX ± .005		FRACTIONS ± 1/64 ANGLES ± 0° 30'		CODE A			NATURAL				PX952 Ø
TOLERANCES							FINISH & SPEC. NO.		ELEC. DES. APP.	MECH. DES. APP.	