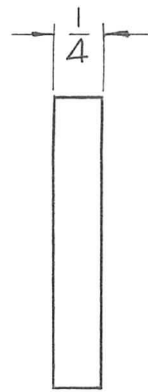
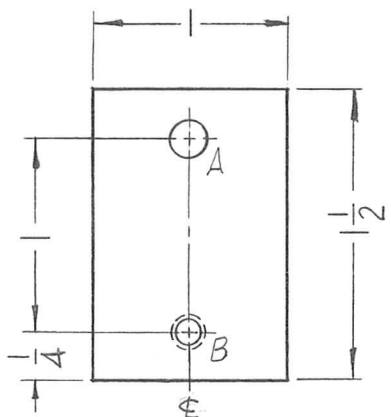




REQ. PER UNIT	USED ON			PX-802 0
	MODEL	ASS'Y. NO.	DATE	
1	GPT-200K	AX-395	3-22-64	



HOLES: REQ.  
 A- 3/16 DIA. \_\_\_\_\_ 1  
 B- DRILL & TAP FOR 10-32 — 1

							REQ. ITEM	PART NO.	F. BUDETTI	DESCRIPTION	SYMBOL	
							AS NOTED		THE TECHNICAL MATERIEL CORP. MAMARONECK, NEW YORK			
							STOCK SIZE		INSULATOR TIE DOWN			
0	ORIGINAL RELEASE	5.16.64		WJB			G-7 SILICONE GLASS					
SYM	DESCRIPTION	DATE	CH. NO.	DRAFTS	CHECKER	ENG. APP.	MATERIAL					
UNLESS OTHERWISE SPECIFIED DIMENSIONS ARE IN INCHES AND INCLUDE CHEMICALLY APPLIED OR PLATED FINISHES		SCALE		1" = 1"						SRG	aa	Roe
		CODE						TYPE & TEMPER	HEAT TREAT. SPEC.	DRAWN	CHECKED	FINAL APPROVAL
DECIMALS .X ± .05 .XX ± .01 .XXX ± .005		FRACTIONS ± 1/64 ANGLES ± 0° 30'		TOLERANCES				NONE		02-B	WJB	PX-802 0
								FINISH & SPEC. NO.		ELEC. DES. APP.	MECH. DES. APP.	

THE CONTENTS OF THIS DRAWING ARE THE EXCLUSIVE PROPERTY OF THE TECHNICAL MATERIEL CORP. ITS UNAUTHORIZED USE FOR REPRODUCTION IN WHOLE OR IN PART IS STRICTLY FORBIDDEN.

REQ. PER UNIT

USED ON

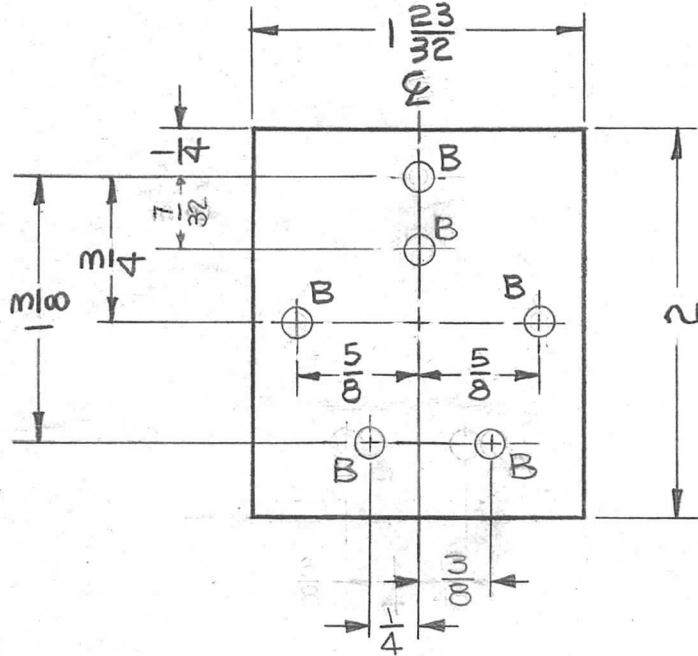
MODEL  
TTR-10

ASS'Y. NO.  
AX-409 THRU  
AX-412

DATE  
4-22-63

PX-811

B



HOLE	DESCRIPTION	REQ'D
A	1/8 DIA	1
B	9/64 DIA	6

REF: LD-1306, LD-1307, LD-1308, LD-1309

REQ. ITEM	PART NO.	DESCRIPTION	SYMBOL
	1/8 TH'K ±.004	THE TECHNICAL MATERIEL CORP. MAMARONECK, NEW YORK	
B	1" A HOLE CHG. TO "B" HOLE	9.29.64 12485	WB @ TRC
A	CLERICAL CHANGE	8.24.64	WB @
MATERIAL		2200 REXOLITE	BOARD, IFT TING IPA TANK
TYPE & TEMPER		HEAT TREAT. SPEC.	DRAWN
FINISH & SPEC. NO.		ELEC. DES. APP.	MECH. DES. APP.
UNLESS OTHERWISE SPECIFIED DIMENSIONS ARE IN INCHES AND INCLUDE CHEMICALLY APPLIED OR PLATED FINISHES		SCALE	
DECIMALS .X ±.05 .XX ±.01 .XXX ±.005		FRACTIONS ± 1/64 ANGLES ± 0° 30'	CODE A
TOLERANCES			
DRAWN		CHECKED	FINAL APPROVAL
R. KOHN		W. Jordan 5/8/63	BP
		PX-811	B

THE CONTENTS OF THIS DRAWING ARE THE EXCLUSIVE PROPERTY OF THE TECHNICAL MATERIEL CORP. ITS UNAUTHORIZED USE FOR REPRODUCTION IN WHOLE OR IN PART IS STRICTLY FORBIDDEN.

REQ. PER UNIT

1

MODEL

TTR-10

USED ON

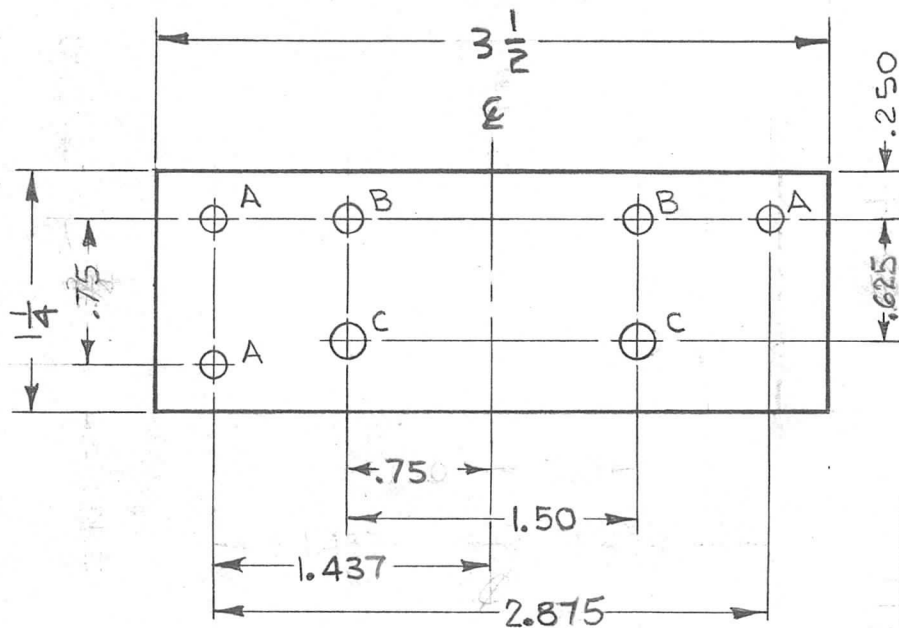
ASS'Y. NO.

AX-409

DATE

4-22-63

PX-812



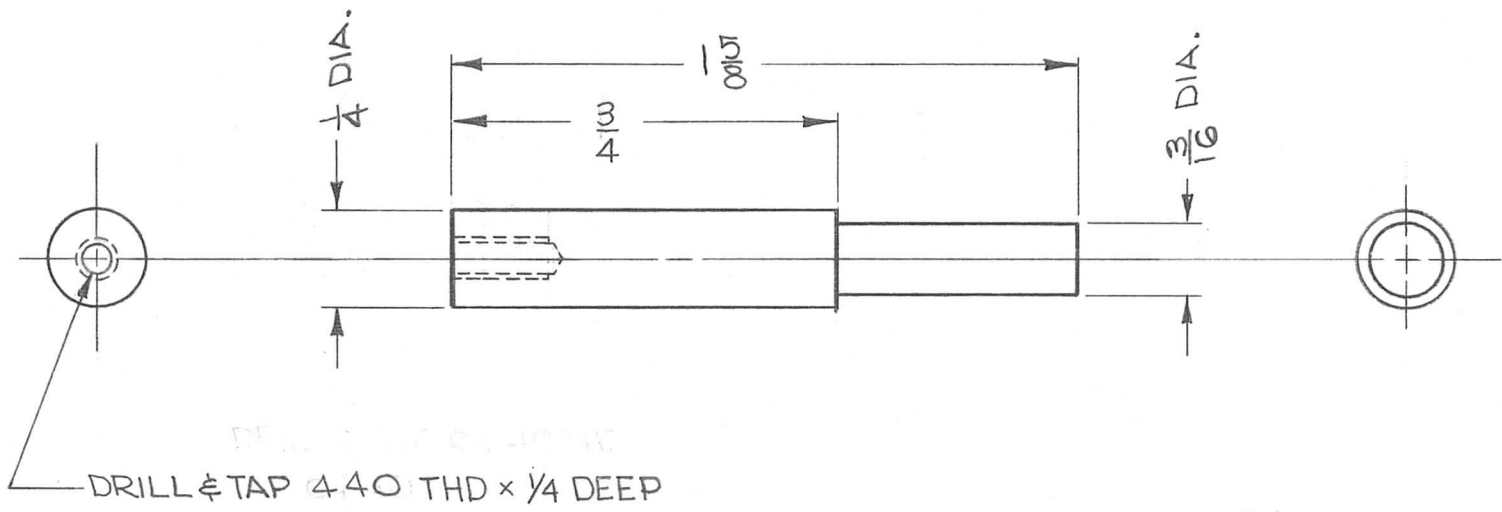
HOLE LEGEND		
HOLE	REQ	DESCRIPTION
A	3	1/8 DIA
B	2	9/64 DIA
C	2	1/64 DIA

REQ.	ITEM	PART NO.	KOHN	DESCRIPTION	E3037-55	SYMBOL
		1/8 THK ±.004	THE TECHNICAL MATERIEL CORP. MAMARONECK, NEW YORK			
		STOCK SIZE	BOARD, CONTACT			
		2200 REXOLITE	IPA TANK			
SYM	DESCRIPTION	DATE	CH. NO.	DRAFTS	CHECKER	ENG. APP.
UNLESS OTHERWISE SPECIFIED DIMENSIONS ARE IN INCHES AND INCLUDE CHEMICALLY APPLIED OR PLATED FINISHES		SCALE	1:1			
DECIMALS .X ± .05 .XX ± .01 .XXX ± .005	TOLERANCES	FRACTIONS ± 1/64 ANGLES ± 0° 30'	CODE	A		
FINISH & SPEC. NO.		TYPE & TEMPER	HEAT TREAT. SPEC.	DRAWN	CHECKED	FINAL APPROVAL
				RKohn 4-15-63	H. J.	B.P.
				RKohn	W. Jordan 5/8/63	PX-812

THE CONTENTS OF THIS DRAWING ARE THE EXCLUSIVE PROPERTY OF THE TECHNICAL MATERIEL CORP. ITS UNAUTHORIZED USE FOR REPRODUCTION IN WHOLE OR IN PART IS STRICTLY FORBIDDEN.

REQ. PER UNIT	USED ON		
	MODEL	ASS'Y. NO.	DATE
1	TTR-10	A-2775	5-25-63

PX-825



REQ.	ITEM	PART NO.	R. KOHN	DESCRIPTION	SYMBOL
		$\frac{1}{4}$ DIA. ROD		THE TECHNICAL MATERIEL CORP.	
		STOCK SIZE		MAMARONECK, NEW YORK	
		50% SYNTHANE GRADE L-YB		HANDLE, EXTENSION	
		MATERIAL		CIRCUIT BREAKER	
SYM	DESCRIPTION	DATE	CH. NO.	DRAFTS	CHECKER
	UNLESS OTHERWISE SPECIFIED DIMENSIONS ARE IN INCHES AND INCLUDE CHEMICALLY APPLIED OR PLATED FINISHES	SCALE	2:1		
DECIMALS	TOLERANCES	FRACTIONS	CODE		
.X $\pm$ .05		$\pm$ 1/64	A		
.XX $\pm$ .01		ANGLES			
.XXX $\pm$ .005		$\pm$ 0° 30'			
		TYPE & TEMPER	HEAT TREAT. SPEC.	DRAWN	CHECKED
		SEMI-GLOSS - BLACK		R. KOHN	W. JORDAN
		FINISH & SPEC. NO.		ELEC. DES. APP.	MECH. DES. APP.
					PX-825

THE CONTENTS OF THIS DRAWING ARE THE EXCLUSIVE PROPERTY OF THE TECHNICAL MATERIEL CORP. ITS UNAUTHORIZED USE FOR REPRODUCTION IN WHOLE OR IN PART IS STRICTLY FORBIDDEN.

REQ. PER UNIT

USED ON

MODEL

ASS'Y. NO.

DATE

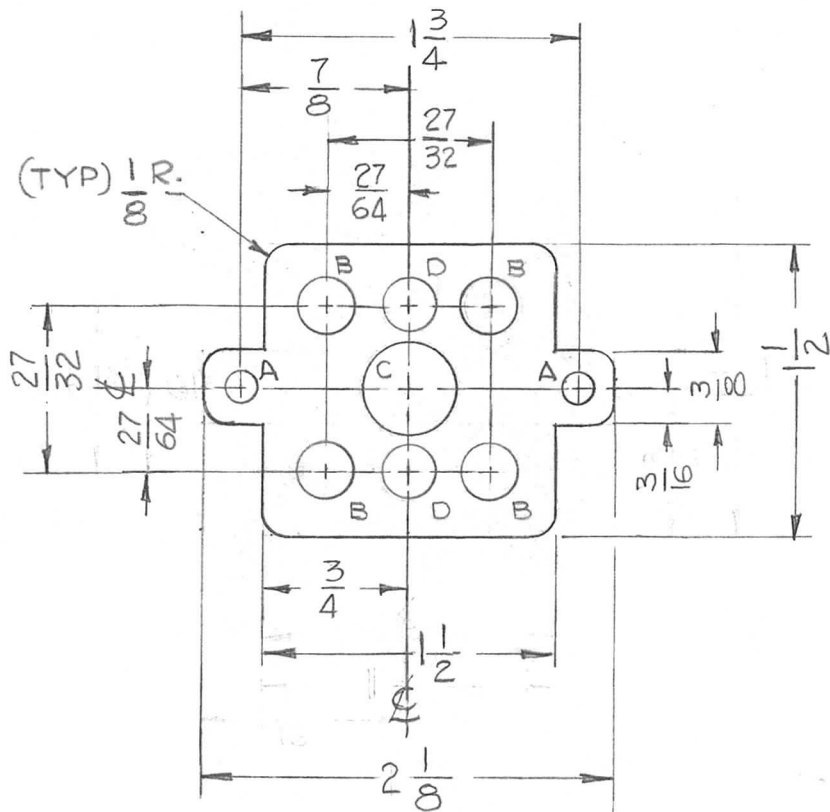
1

GPR-92

6-13-63

PX-827

A



HOLE	DESCRIPTION	REQ'D
A	5/32 DIA.	2
B	3/8 DIA.	4
C	1/2 DIA.	1
D	17/64 DIA.	2

REQ.	ITEM	PART NO.	DESCRIPTION	SYMBOL
		1/16 THK STOCK SIZE	THE TECHNICAL MATERIEL CORP. MAMARONECK, NEW YORK	
		PHENOLIC	INSULATOR, I F	
		MATERIAL		
A	IN HOLE CHART 3/8 D. WAS 9/32 D. & 1/2 D. WAS 31/64 D.	10/14/63 10186	<i>[Signature]</i> <i>[Signature]</i>	
SYM	DESCRIPTION	DATE	CH. NO.	DRAFTS
				CHECKER
				ENG. APP.
UNLESS OTHERWISE SPECIFIED DIMENSIONS ARE IN INCHES AND INCLUDE CHEMICALLY APPLIED OR PLATED FINISHES		SCALE	1:1	
DECIMALS .X ± .05 .XX ± .01 .XXX ± .005	TOLERANCES	FRACTIONS ± 1/64 ANGLES ± 0° 30'	CODE	
		XXXXP	G.D.L.	<i>[Signature]</i> 7-9-63
		TYPE & TEMPER	HEAT TREAT. SPEC.	DRAWN
		NATURAL		CHECKED
		FINISH & SPEC. NO.	ELEC. DES. APP.	MECH. DES. APP.
			<i>[Signature]</i> <i>[Signature]</i> 7/8/63	PX-827 A

THE CONTENTS OF THIS DRAWING ARE THE EXCLUSIVE PROPERTY OF THE TECHNICAL MATERIEL CORP. ITS UNAUTHORIZED USE FOR REPRODUCTION IN WHOLE OR IN PART IS STRICTLY FORBIDDEN.

REQ. PER UNIT

2

USED ON

MODEL

GPR-92

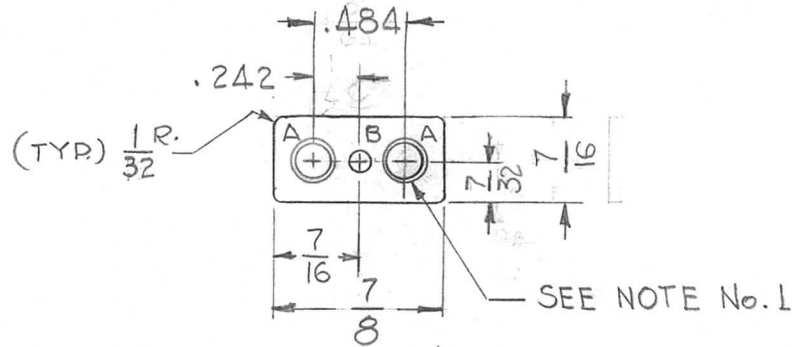
ASS'Y. NO.

DATE

6-13-63

PX-826

HOLE	DESCRIPTION	REQ'D
A	.171 ± .002 DIA.	2
B	3/32 DIA.	1



- NOTE -

- 1) DEBURR ONE EDGE OF "A" HOLES AS SHOWN

REQ.	ITEM	PART NO.	DESCRIPTION	SYMBOL											
		1/16 THK	THE TECHNICAL MATERIEL CORP. MAMARONECK, NEW YORK												
		STOCK SIZE													
		PHENOLIC	INSULATOR XTAL MOUNTING												
		MATERIAL													
SYM	DESCRIPTION	DATE	CH. NO.	DRAFTS	CHECKER	ENG. APP.	XXXP	G.D.L.	7/8/63	TFH	7.8.63				
UNLESS OTHERWISE SPECIFIED DIMENSIONS ARE IN INCHES AND INCLUDE CHEMICALLY APPLIED OR PLATED FINISHES		SCALE		1:1		TYPE & TEMPER		HEAT TREAT. SPEC.		DRAWN		CHECKED		FINAL APPROVAL	
DECIMALS .X ± .05 .XX ± .01 .XXX ± .005		FRACTIONS ± 1/64 ANGLES ± 0° 30'		CODE		NATURAL		FINISH & SPEC. NO.		ELEC. DES. APP.		MECH. DES. APP.		PX-826	

THE CONTENTS OF THIS DRAWING ARE THE EXCLUSIVE PROPERTY OF THE TECHNICAL MATERIEL CORP. ITS UNAUTHORIZED USE FOR REPRODUCTION IN WHOLE OR IN PART IS STRICTLY FORBIDDEN.

REQ. PER UNIT

5

USED ON

MODEL

GPR-92

ASS'Y. NO.

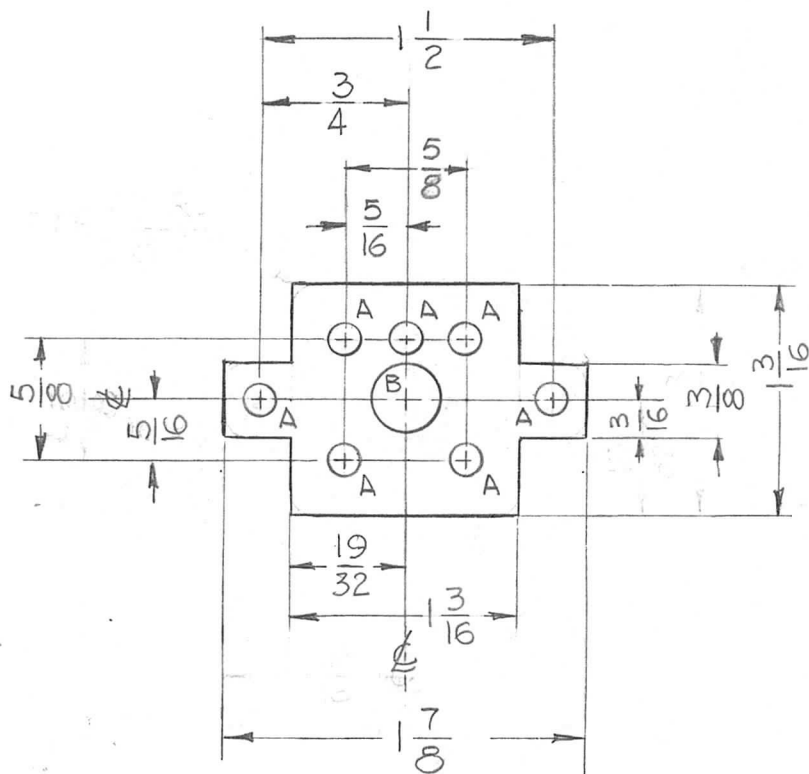
DATE

6-13-63

PX-828

B

HOLE	DESCRIPTION	REQ'D
A	5/32 DIA.	7
B	3/8 DIA.	1



REQ.	ITEM	PART NO.	STRUHER DESCRIPTION	SYMBOL								
		11/76 THK	THE TECHNICAL MATERIEL CORP. MAMARONECK, NEW YORK	INSULATOR, I F								
		STOCK SIZE										
B	ALL 1/8 RADIUS DELETED	4/28/64 11305 A.M.										
A	IN STOCK SIZE BLOCK 1/16 WAS 1/32 IN HOLE CHART 3/8 D. WAS 11/32 D.	10/14/63 10180	PHENOLIC									
SYM	DESCRIPTION	DATE	CH. NO.	DRAFTS	CHECKER	ENG. APP.	MATERIAL					
UNLESS OTHERWISE SPECIFIED DIMENSIONS ARE IN INCHES AND INCLUDE CHEMICALLY APPLIED OR PLATED FINISHES		SCALE		1:1		XXX P		GDL	JDE 7/8/63	TFH	7.8.63	
DECIMALS .X ± .05 .XX ± .01 .XXX ± .005		TOLERANCES		FRACTIONS ± 1/64 ANGLES ± 0° 30'		NATURAL		TYPE & TEMPER	HEAT TREAT. SPEC.	DRAWN	CHECKED	FINAL APPROVAL
		CODE				FINISH & SPEC. NO.		ELEC. DES. APP.	MECH. DES. APP.	PX-828 B		





WIRE SIZE AWG	TMC SIZE CODE	MINIMUM ID BEFORE SHRINKING	RECOVERY ID AFTER SHRINKING	NOM. WALL THICKNESS
24	24	.046	.023	.016
22	22	.063	.031	.017
20	20	USE TMC SIZE 22		
18	18	.093	.046	.020
16	16	.125	.062	.020
14	14	USE TMC SIZE 16		
12	12	.187	.093	.020
10	10	USE TMC SIZE 12		
8	8	.250	.125	.025
6	6	.375	.187	.025
4	4	USE TMC SIZE 6		
2	2	.500	.250	.025
5/16"	312	USE TMC SIZE 2		
3/8"	375	.750	.375	.030
7/16"	437	USE TMC SIZE 375		
1/2"	500	1.000	.500	.035
5/8"	625	USE TMC SIZE 500		
3/4"	750	1.500	.750	.040
7/8"	875	USE TMC SIZE 750		
1"	1000	2.000	1.000	.045

REQ. PER UNIT	USED ON		PX 830	B
	MODEL	ASS'Y. NO.		
	GPR-92		10-16-63	

COLOR	CODE
BLACK	1
RED	2
WHITE	3
YELLOW	4

SHRINK TEMPERATURE	250°F CONTINUOUS
TENSILE STRENGTH	2400 PSI
ULTIMATE ELONGATION	400%
BRITTLENESS TEMPERATURE	-55° F.
SPECIFIC GRAVITY	1.26
WATER ABSORPTION	0.2% *
DIELECTRIC STRENGTH (25 MIL WALL)	1300 VOLTS/MIL
VOLUME RESISTIVITY	5X10 <sup>5</sup> OHM-CM
DIELECTRIC CONSTANT	2.7
FUNGUS RESISTANCE	INERT *
FLAMMABILITY	SELF EXTINGUISHING
CORROSION RESISTANCE	NON-CORROSIVE *

NOTE:  
 1. SHRINKAGE TAKES PLACE WITHIN SEVEN SECONDS AT 275°F. to 300°F.  
 2. LENGTHS AVAILABLE: 4' LENGTH OR REEL LENGTHS UP TO 100 FEET. YELLOW.  
 3. LENGTHS AVAILABLE: 4' LENGTH OR REEL LENGTHS UP TO 100 FEET.

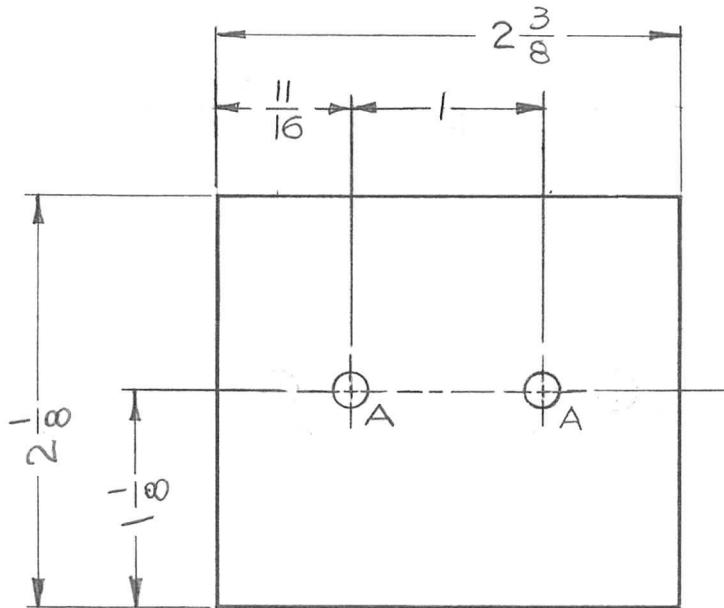
\*When tested to MIL-I-7444B

TMC PART NUMBER SHALL BE IN THE FOLLOWING FORM:

PX 830 - 18 - 3  
 TMC P/N TMC SIZE CODE COLOR (SEE CHART)  
 (SEE CHART)

REQ. ITEM	PART NO.	DESCRIPTION	SYMBOL
B	REVISED W/CHANGES	9.22.64 12343	JB @ JC
A	DASHES ADDED IN PART NO.	10/16/63 10269	MTA JCB
SYMBOL	DESCRIPTION	DATE	CH. NO. DRAFTS CHECKER ENG. APP.
UNLESS OTHERWISE SPECIFIED DIMENSIONS ARE IN INCHES AND INCLUDE CHEMICALLY APPLIED OR PLATED FINISHES		SCALE S-401-63	(RNF-100) (FIT-221)
DECIMALS .X ± .05 .XX ± .01 .XXX ± .005	FRACTIONS ± 1/64 ANGLES ± 0° 30'	TOLERANCES	CODE
THE TECHNICAL MATERIEL CORP. MAMARONECK, NEW YORK		INSULATION SLEEVING, ELECT.	
STOCK SIZE		SHRINK TYPE	
IRRADIATED MODIFIED POLYOLEFIN		MATERIAL	
TYPE & TEMPER		HEAT TREAT. SPEC.	
FINISH & SPEC. NO.		ELEC. DES. APP. MECH. DES. APP.	
DRAWN		CHECKED	
GDL		JC 10/16/63	
FINAL APPROVAL		BP	
PX 830		B	

REQ. PER UNIT	USED ON			PX-831	A
	MODEL	ASS'Y. NO.	DATE		
1	GPR-92	P/S	10-9-63		



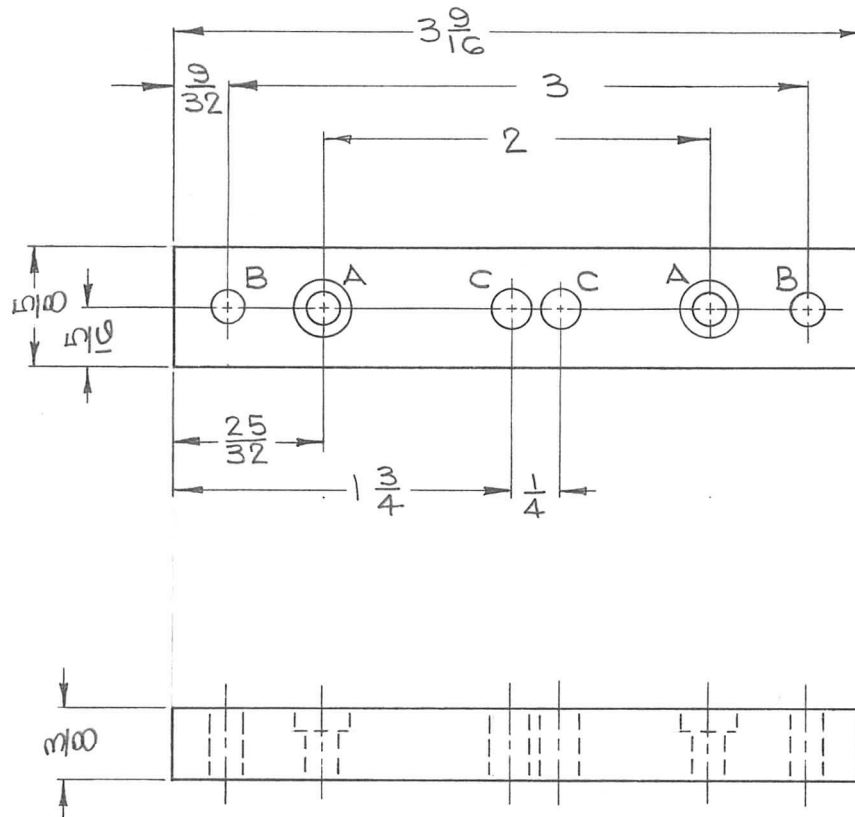
LEGEND		
HOLE	DESCRIPTION	REQ.
A	3/16 DIA	2

REF: LD-1397

REQ.	ITEM	PART NO.	GELLMAN	DESCRIPTION	SYMBOL					
		1/16 THICK		THE TECHNICAL MATERIEL CORP. MAMARONECK, NEW YORK						
		STOCK SIZE								
A	'A' HOLES RELOCATED 11/16 WAS 5/16, 1 WAS 1 3/4	5-26-64	11426	A.M. @ W	XXXX PHENOLIC					
					COVER, TERMINAL BOARD MACHINING					
SYM	DESCRIPTION	DATE	CH. NO.	DRAFTS	CHECKER	ENG. APP.	MATERIAL			
UNLESS OTHERWISE SPECIFIED DIMENSIONS ARE IN INCHES AND INCLUDE CHEMICALLY APPLIED OR PLATED FINISHES		SCALE 1:1								
DECIMALS .X ± .05 .XX ± .01 .XXX ± .005	TOLERANCES	FRACTIONS ± 1/64 ANGLES ± 0° 30'	CODE							
							NATURAL			
							FINISH & SPEC. NO.	ELEC. DES. APP.	MECH. DES. APP.	PX-831 A



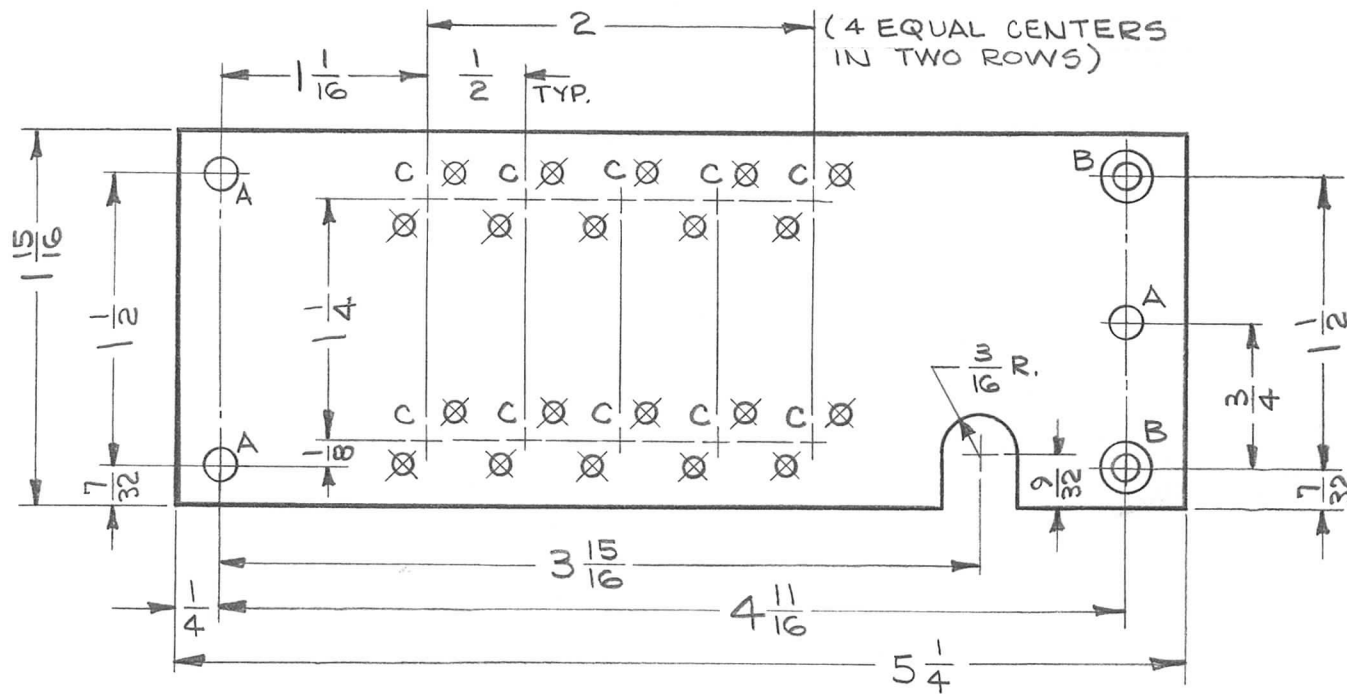
REQ. PER UNIT	USED ON			PX-833	A
	MODEL	ASS'Y. NO.	DATE		
1	TTRA-4	A-3210	10-17-63		



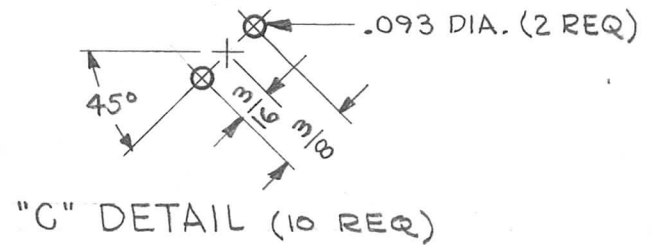
HOLE	DESCRIPTION	REQ
A	5/32 DIA. C'BORE 5/16 DIA. x 1/8 DP.	2
B	5/32 DIA.	2
C	3/16 DIA	2

REQ.	ITEM	PART NO.	DESCRIPTION	SYMBOL
			THE TECHNICAL MATERIEL CORP. MAMARONECK, NEW YORK	
			STOCK SIZE	
A	"A" WAS 5/32 DIA C'BORE 9/32 DIA X 1/8 DP.	12953	GLASS BONDED MICA	
			MATERIAL	
			GRADE-L432 MIL-I-10A	
			TYPE & TEMPER	
			HEAT TREAT. SPEC.	
			DRAWN	
			CHECKED	
			FINAL APPROVAL	
			NONE	
			FINISH & SPEC. NO.	
			ELEC. DES. APP.	
			MECH. DES. APP.	
				PX-833 A

REQ. PER UNIT	USED ON			PX-835	Φ
	MODEL	ASS'Y. NO.	DATE		
5	LFS-1		10-31-63		



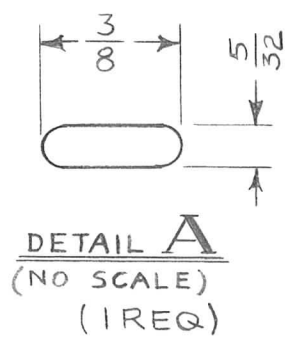
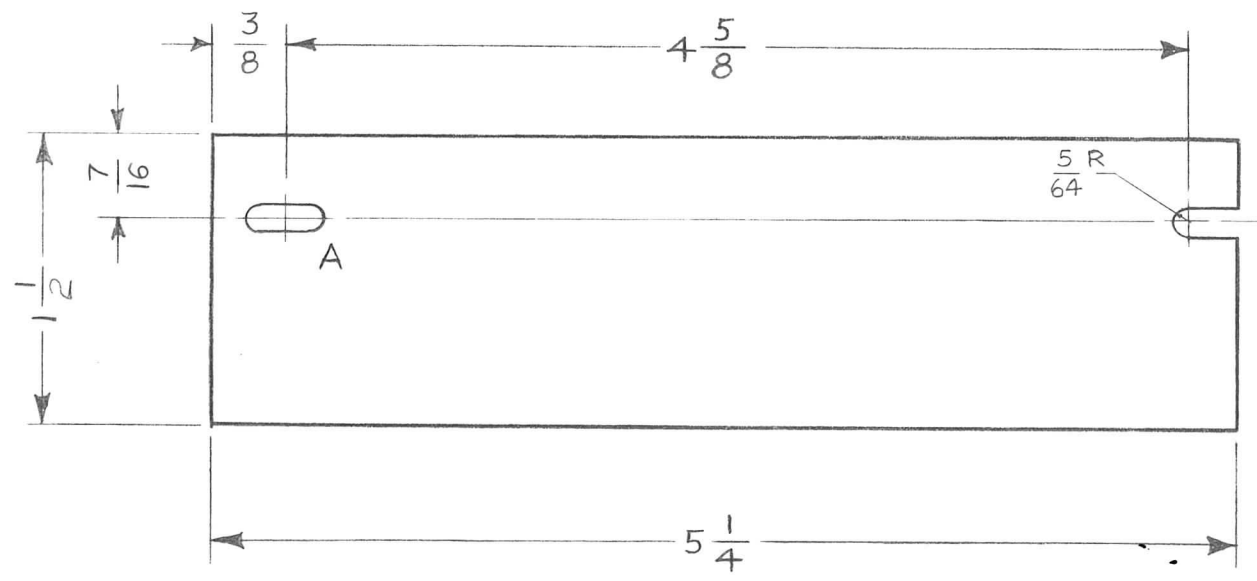
LEGEND		
HOLE	DESCRIPTION	REQ.
A	5/32 DIA.	3
B	.120 DIA. HOLE, C'SINK. 82° TO .230 DIA.	2
C	SEE DETAIL	10



REF: LD-1417

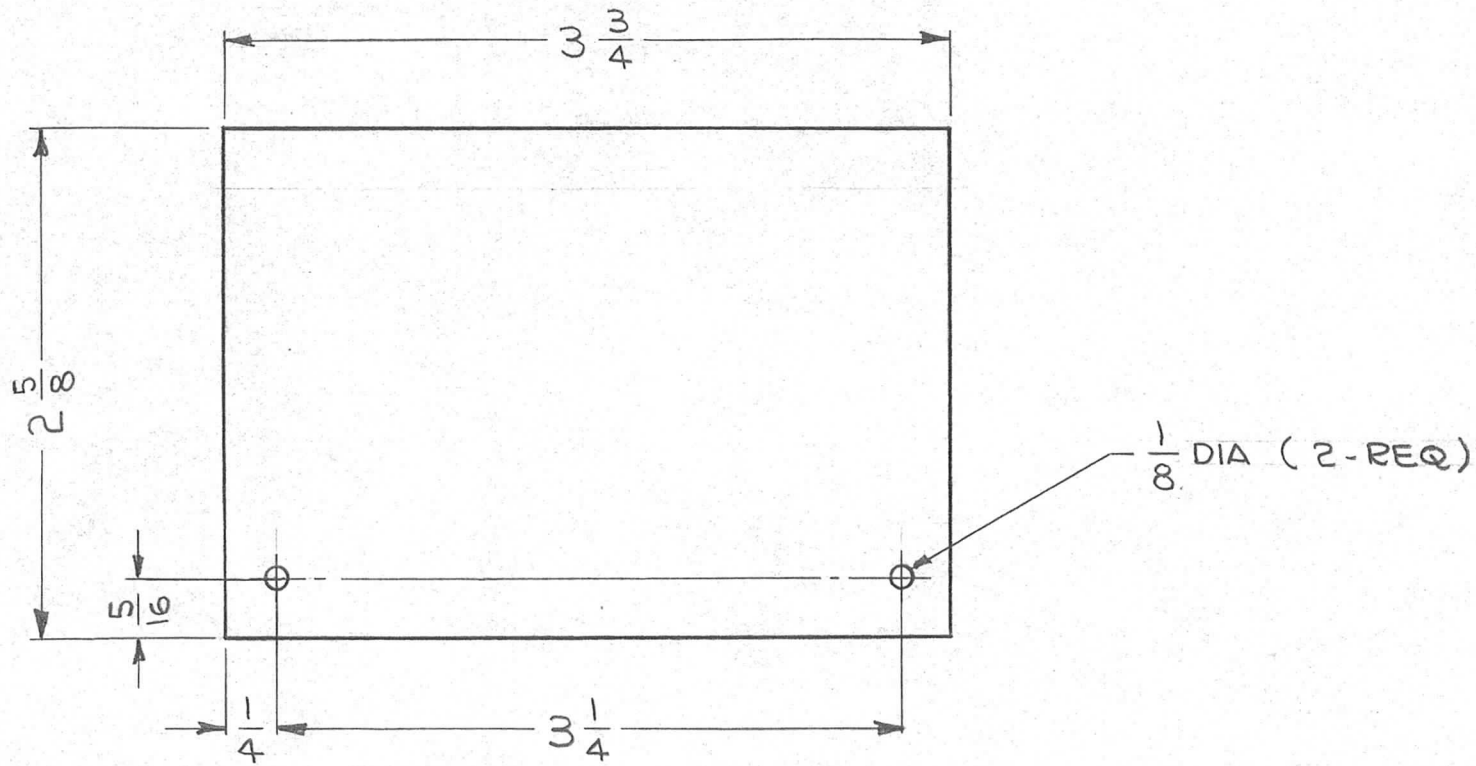
SYM	DESCRIPTION	DATE	CH. NO.	DRAFTS	CHECKER	ENG. APP.	REQ. ITEM	PART NO.	M. GELLMAN	DESCRIPTION	SYMBOL	
Φ	ORIGINAL RELEASE FOR PRODUCTION	7-27-64	Φ									
								.125 THICK STOCK SIZE	THE TECHNICAL MATERIEL CORP. MAMARONECK, NEW YORK			
								XXX P, PHENOLIC	BOARD, MOUNTING, CAPACITOR (SPECTRUM FILTER)			
	UNLESS OTHERWISE SPECIFIED DIMENSIONS ARE IN INCHES AND INCLUDE CHEMICALLY APPLIED OR PLATED FINISHES	SCALE	1:1									
	DECIMALS .X ± .05 .XX ± .01 .XXX ± .005	FRACTIONS ± 1/64 ANGLES ± 0° 30'	CODE	A								
	TOLERANCES							NATURAL				
								FINISH & SPEC. NO.	ELEC. DES. APP.	MECH. DES. APP.	PX-835 Φ	

REQ. PER UNIT	USED ON			PX 840 4
	MODEL	ASS'Y. NO.	DATE	
1	RAK-31B	A-3507	2-26-64	



				REQ. ITEM	PART NO.	I. JOHNSON	DESCRIPTION	SYMB		
				1/16		THE TECHNICAL MATERIEL CORP.				
				STOCK SIZE		MAMARONECK. NEW YORK				
				PHENOLIC		COVER, SHIELD, TERMINA				
				MATERIAL						
SYM	DESCRIPTION	DATE	CH. NO.	DRAFTS	CHECKER	ENG. APP.				
	ORIGINAL RELEASE	7/5/69		(W)						
UNLESS OTHERWISE SPECIFIED DIMENSIONS ARE IN INCHES AND INCLUDE CHEMICALLY APPLIED OR PLATED FINISHES		SCALE	1:1 & AS NOTED			XXXXP	R. Peter	2/26/64	SJM	
DECIMALS .X ± .05 .XX ± .01 .XXX ± .005		FRACTIONS ± 1/64 ANGLES ± 0° 30'	TOLERANCES		CODE	TYPE & TEMPER	HEAT TREAT. SPEC.	DRAWN	CHECKED	FINAL APPRO.
						BLACK				PX 84C
						FINISH & SPEC. NO.	ELEC. DES. APP.	MECH. DES. APP.		

REQ. PER UNIT	USED ON			PX-841	○
	MODEL	ASS'Y. NO.	DATE		
2	GPR-92		3-2-64		



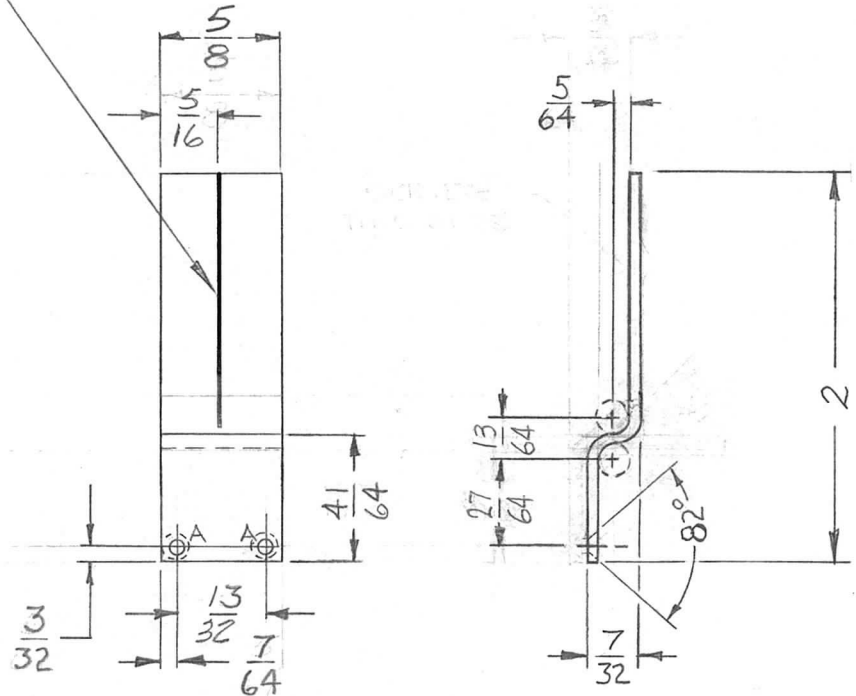
REQ.	ITEM	PART NO.	GELLMAN DESCRIPTION				SYMBOL
		.040 ± .015 THK	THE TECHNICAL MATERIEL CORP.				
		STOCK SIZE	MAMARONECK, NEW YORK				
○	ORIGINAL RELEASE FOR PRODUCTION	3/9/64			fla		
X	EXPER. RELEASE	3/6/64	X	68			
SYM	DESCRIPTION	DATE	CH. NO.	DRAFTS	CHECKER	ENG. APP.	
UNLESS OTHERWISE SPECIFIED DIMENSIONS ARE IN INCHES AND INCLUDE CHEMICALLY APPLIED OR PLATED FINISHES		SCALE	1:1				
DECIMALS .X ± .05 .XX ± .01 .XXX ± .005	TOLERANCES	FRACTIONS ± 1/64 ANGLES ± 0° 30'	CODE	A			
		TYPE & TEMPER	HEAT TREAT. SPEC.	DRAWN	CHECKED	FINAL APPROVAL	
				G. Sencer	fla 3/9/64	RWC 3/9/64	
		FINISH & SPEC. NO.		ELEC. DES. APP.	MECH. DES. APP.	PX-841 ○	



REQ. PER UNIT	USED ON		
	MODEL	ASS'Y. NO.	DATE
1	HFR-2	A3624	4-8-64
1	HFRR-2	A3625	9-11-64

PX 844 c

.010 WIDE (SCRIBED LINE)  
(BLACK FILLED)  
ON REVERSED SIDE.



HOLE LEGEND		
HOLE	DESCRIPTION	REQD
A	.090 DIA. - CSK 82° TO .177 DIA. (2-56)	2

C	41/64 WAS 35/64. 040THK WAS 1/32, 27/64 WAS 7/16, 13/64 WAS 3/16	4-12-67	18104	L.A.K.		
B	7/16 DIM. RELOCATED. ON REVERSED SIDE DELE. FROM CALLOUT.	4-9-65	13864	J.L.		
A	35/64 DIM. ADD. ON REVERSED SIDE ADD. TO CALLOUT; SIDE VIEW REVISED	2-25-65	13576	J.L.		
Ø	ORIGINAL RELEASE FOR PRODUCTION	9-11-64	Ø	J.L.		

SYM	DESCRIPTION	DATE	CH. NO.	DRAFTS	CHECKER	ENG. APP.
X <sub>1</sub>	HOLE "A" WAS .062 DIA. 13/32 WAS 15/32, 3/16 WAS 9/32 3/32 WAS 5/64, 7/64 WAS 5/64	9/10/64		J.P.		
X	EXP. RELEASE	4-8-64		J.P.		
UNLESS OTHERWISE SPECIFIED DIMENSIONS ARE IN INCHES AND INCLUDE CHEMICALLY APPLIED OR PLATED FINISHES		SCALE: NONE				
DECIMALS .X ± .05 .XX ± .01 .XXX ± .005	TOLERANCES	FRACTIONS ± 1/64 ANGLES ± 0° 30'	CODE A			

REQ. ITEM	PART NO.	T. KRUY	DESCRIPTION	SYMBOL
	.040 THK STOCK SIZE		THE TECHNICAL MATERIEL CORP. MAMARONECK. NEW YORK	
	PLEXIGLASS		INDICATOR, FREQUENCY CHANNEL (SLIDE ASSY)	
	CLEAR			
TYPE & TEMPER	HEAT TREAT. SPEC.	DRAWN	CHECKED	FINAL APPROVAL
		T. Kruey		PX 844 c
FINISH & SPEC. NO.	ELEC. DES. APP.	MECH. DES. APP.		

NOMINAL CONDUCTOR DIA.	TMC SIZE CODE	MINIMUM EXPANDED I.D.	RECOVERED DIMENSIONS	
			MAXIMUM I.D.	WALL THICKNESS
1/8"	125	.200	.124	.020
3/16"	190	.290	.178	.020
1/4"	250	.350	.249	.020
5/16"	313	.375	.311	.020
3/8"	375	.470	.334	.025
7/16"	438	.560	.399	.025
1/2"	500	.655	.462	.025
5/8"	625	.750	.524	.025
3/4"	750	.930	.655	.030
7/8"	875	1.125	.786	.035
1"	1000	1.310	.911	.035

ALL SIZES SHIPPED IN STRAIGHT LENGTHS PACKAGED 36" LONG UNLESS OTHERWISE SPECIFIED.

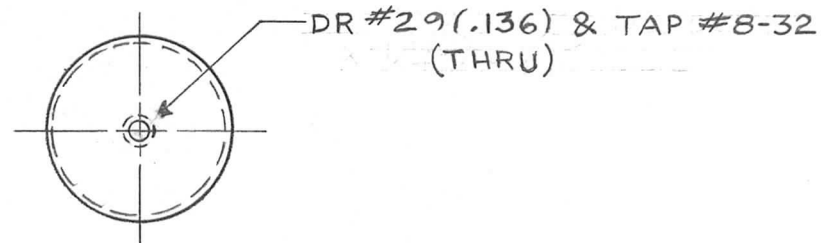
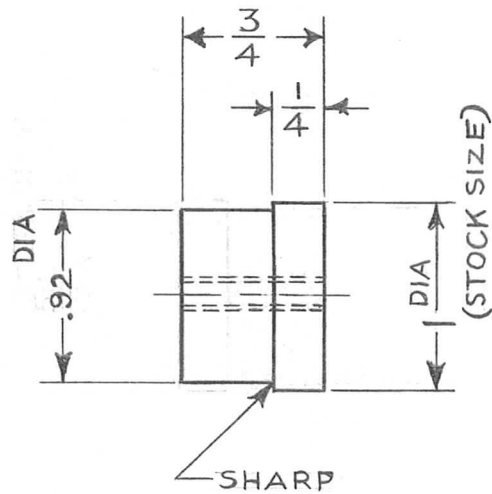
TMC PART NUMBER SHALL BE IN THE FOLLOWING FORM

PX845                      - 500  
 /                                  \  
 BASIC P/N                      TMC SIZE CODE  
     (SEE CHART)

REF: S825

REQ. UNIT	ITEM	PART NO.	CAMARDA	DESCRIPTION	SYMBOL						
		SEE CHART		THE TECHNICAL MATERIEL CORP.							
		STOCK SIZE		MAMARONECK, NEW YORK							
A	ON CHART "NOMINAL COND. DIA." WAS "NOMINAL TUBING SIZE"	8.17.64	12157	LAB	JC						
O	ORIGINAL RELEASE FOR PRODUCTION	5-19-64	0	A.M.	JC						
SYM	DESCRIPTION	DATE	CH. NO.	DRAFTS	CHECKER	ENG. APP.	MATERIAL				
UNLESS OTHERWISE SPECIFIED DIMENSIONS ARE IN INCHES AND INCLUDE CHEMICALLY APPLIED OR PLATED FINISHES		SCALE	//								
DECIMALS .X ± .05 .XX ± .01 .XXX ± .005	TOLERANCES	FRACTIONS ± 1/64 ANGLES ± 0° 30'	CODE C	S401-286 (3E)							
							—//—	—//—	A. Marino	5-19-64	
							TYPE & TEMPER	HEAT TREAT. SPEC.	DRAWN	CHECKED	FINAL APPROVAL
							—//—		JC 5-20-64		PX845
							FINISH & SPEC. NO.	ELEC. DES. APP.	MECH. DES. APP.		A

REQ. PER UNIT	USED ON			PX848	A
	MODEL	ASS'Y. NO.	DATE		
2	TTC-1		8-17-64		

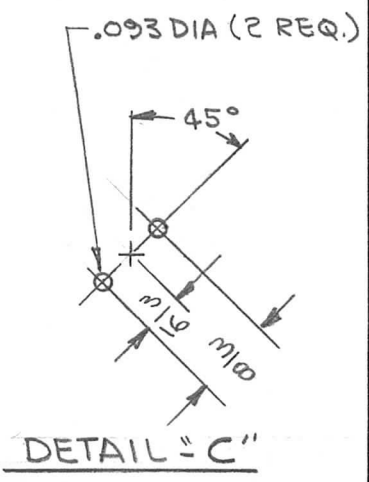
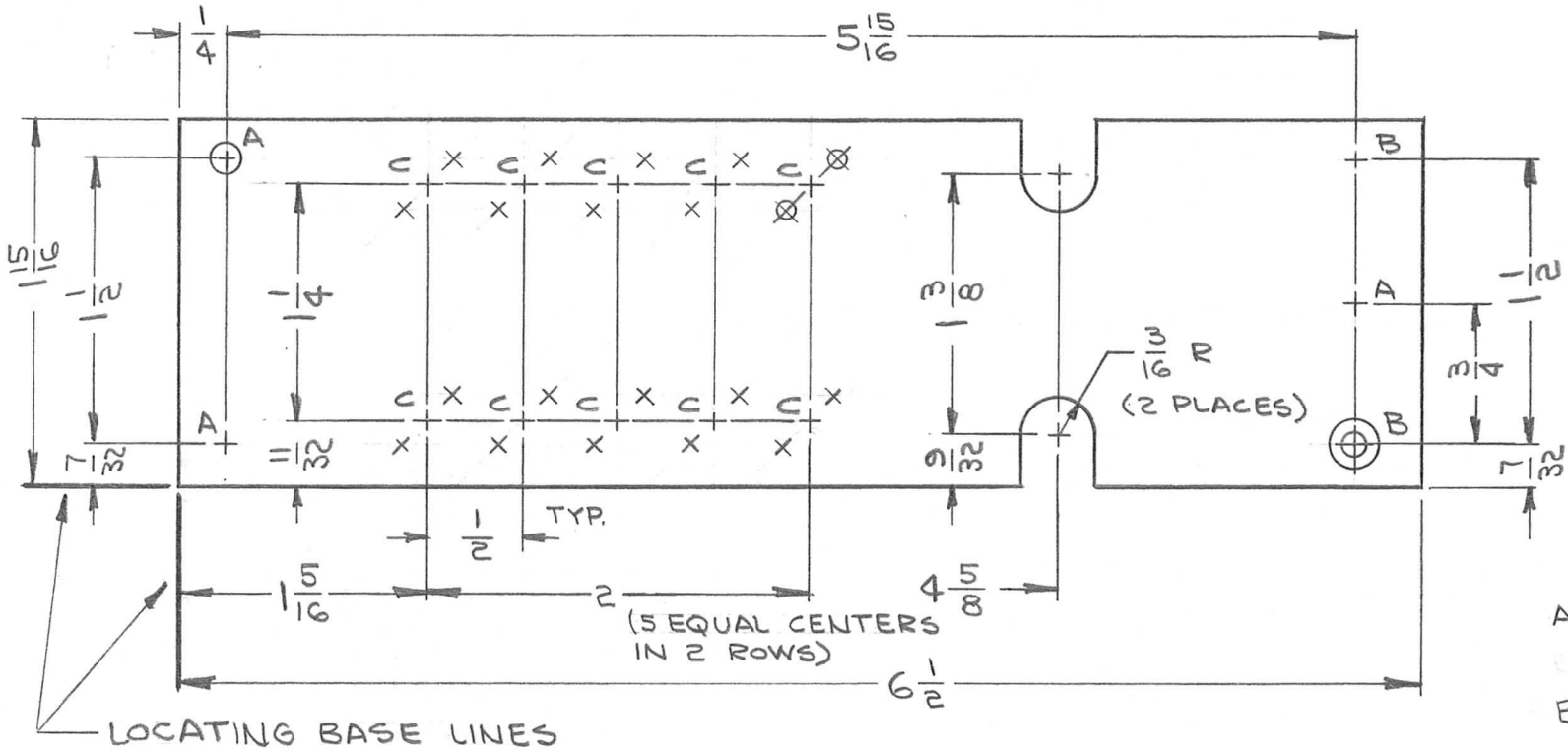


REQ. ITEM	PART NO.	A. DUDDLES DESCRIPTION				SYMBOL
A	1" DIA ROD	THE TECHNICAL MATERIEL CORP.				
	STOCK SIZE	MAMARONECK, NEW YORK				
X	NYLON	END MOUNT, COIL				
	MATERIAL					
	TYPE & TEMPER	HEAT TREAT. SPEC.	DRAWN	CHECKED	FINAL APPROVAL	
	FINISH & SPEC. NO.	ELEC. DES. APP.	MECH. DES. APP.	PX848		A

SYM	DESCRIPTION	DATE	CH. NO.	DRAFTS	CHECKER	ENG. APP.
A	HOLE WAS 1/2 DEEP.	1-12-65	13286	9.L.	<i>[Signature]</i>	<i>[Signature]</i>
X	EXP. RELEASE	8-17-64		NP		
	UNLESS OTHERWISE SPECIFIED DIMENSIONS ARE IN INCHES AND INCLUDE CHEMICALLY APPLIED OR PLATED FINISHES	SCALE	1:1			
	DECIMALS .X ± .05 .XX ± .01 .XXX ± .005	FRACTIONS ± 1/64 ANGLES ± 0° 30'	CODE	A		
	TOLERANCES					

REQ. PER UNIT	USED ON			PX849	Ø
	MODEL	ASS'Y. NO.	DATE		
5	LFSB-1		8-24-63		



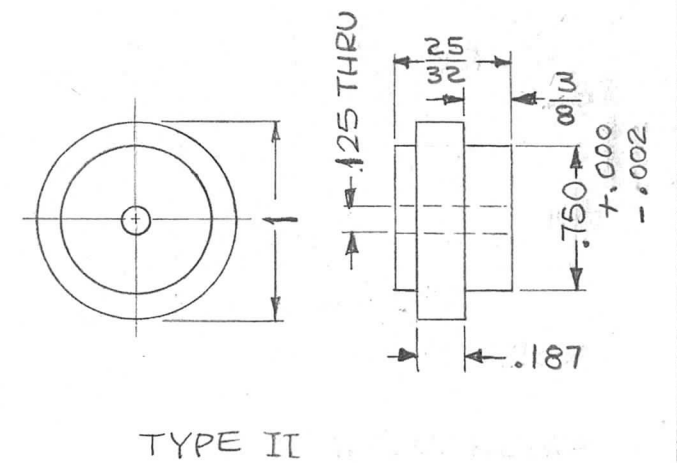
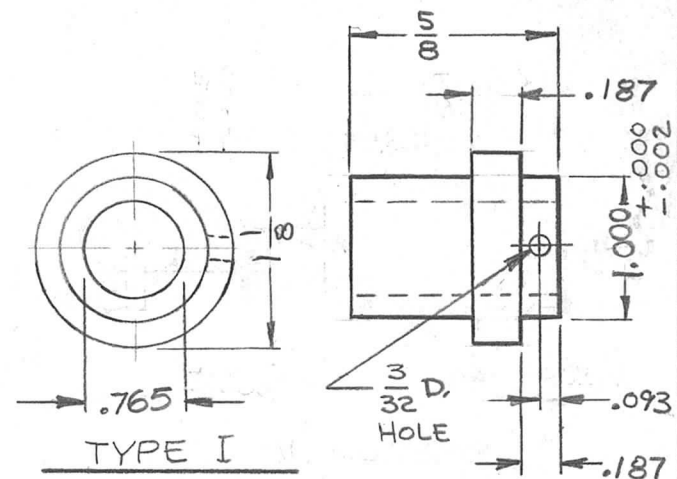
- A - 5/32 DIA 3 REQ
- B - .120 DIA. C'SINK 82° 2 REQ. TO .230 DIA. (4-40)
- C - SEE DETAIL 10 REQ

REF.: LD1605

SYM	DESCRIPTION	DATE	CH. NO.	DRAFTS	CHECKER	ENG. APP.	REQ. ITEM	PART NO.	GELLMAN	DESCRIPTION	SYMBOL
Ø	ORIGINAL RELEASE FOR PRODUCTION	9-28-64	Ø				.125 THK STOCK SIZE		THE TECHNICAL MATERIEL CORP. MAMARONECK. NEW YORK		
X	EXPER. RELEASE	8-24-64	X				XXXP, PHENOLIC MATERIAL		BOARD, MOUNTING, CAPACITOR (SPECTRUM FILTER)		
UNLESS OTHERWISE SPECIFIED DIMENSIONS ARE IN INCHES AND INCLUDE CHEMICALLY APPLIED OR PLATED FINISHES		SCALE 1:1					TYPE & TEMPER NATURAL		DRAWN G. J. @ 9/15/64		FINAL APPROVAL R. J. C.
DECIMALS .X ± .05 .XX ± .01 .XXX ± .005		FRACTIONS ± 1/64 ANGLES ± 0° 30'		CODE A		FINISH & SPEC. NO.		ELEC. DES. APP. MECH. DES. APP.		PX849 Ø	

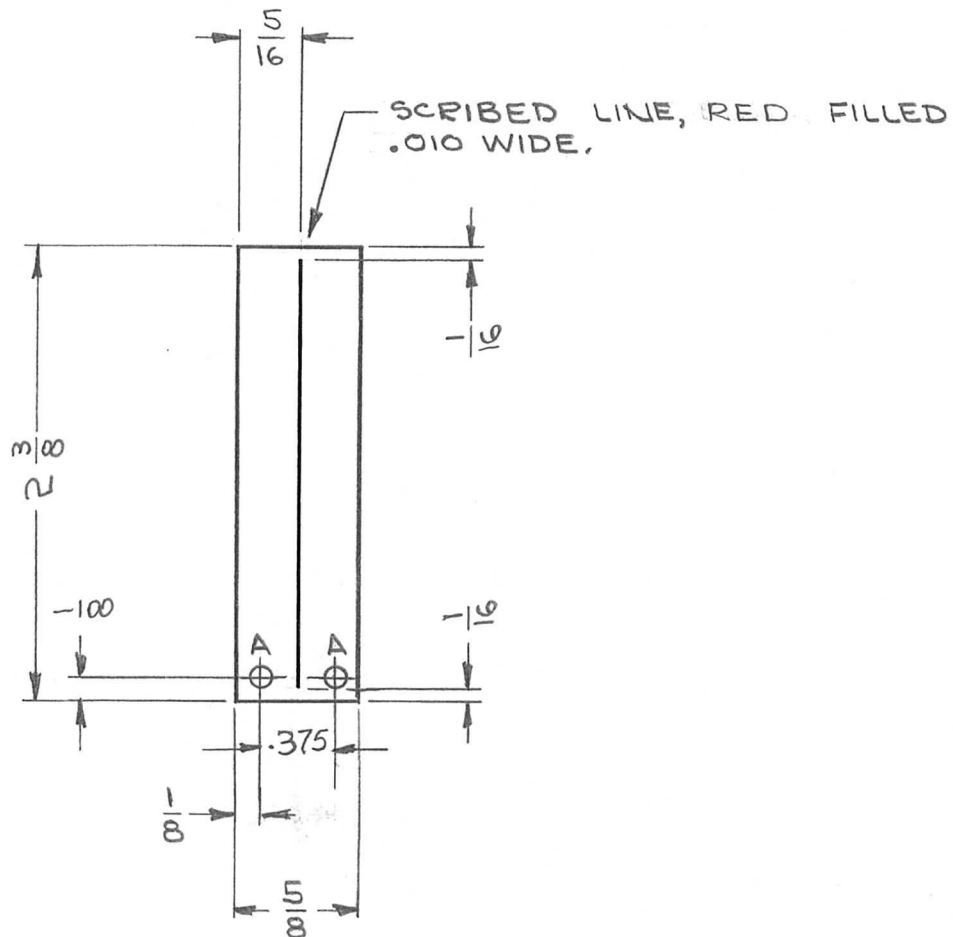
TMC NO.	TYPE	REQ.
PX850-1	I	1
PX850-2	II	1

REQ. PER UNIT	USED ON		PX850	Ø
	MODEL	ASS'Y. NO.		
	VLRB-1		8/28/64	



SYM	DESCRIPTION	DATE	CH. NO.	DRAFTS	CHECKER	ENG. APP.	REQ. ITEM	PART NO.	DESCRIPTION	SYMBOL		
Ø	ORIGINAL RELEASE FOR PRODUCTION	4.9.65	Ø	JL					<b>THE TECHNICAL MATERIEL CORP.</b> MAMARONECK, NEW YORK <b>BUSHING, DIAL BLT.</b>	Ø		
X2	TYPE I - DIM. .765 WAS .750 <small>TOLL. +.005 - .000 DELETED</small>	12-1-64		G.D.L.			//					
X1	TYPE I & II REDIMENSIONED	10-27-64	X1	Ben				STOCK SIZE				
X	EXPERIMENTAL REL.	8/28/64	X	W.B.				NYLON				
UNLESS OTHERWISE SPECIFIED DIMENSIONS ARE IN INCHES AND INCLUDE CHEMICALLY APPLIED OR PLATED FINISHES							SCALE					
DECIMALS .X ± .05 .XX ± .01 .XXX ± .005							FRACTIONS ± 1/64 ANGLES ± 0° 30'	CODE				
TOLERANCES							A					
							TYPE & TEMPER	HEAT TREAT. SPEC.	DRAWN	CHECKED	FINAL APPROVAL	
							NATURAL		W.B.	@	4/9/65	
							FINISH & SPEC. NO.	ELEC. DES. APP.	MECH. DES. APP.	PX 850 Ø		

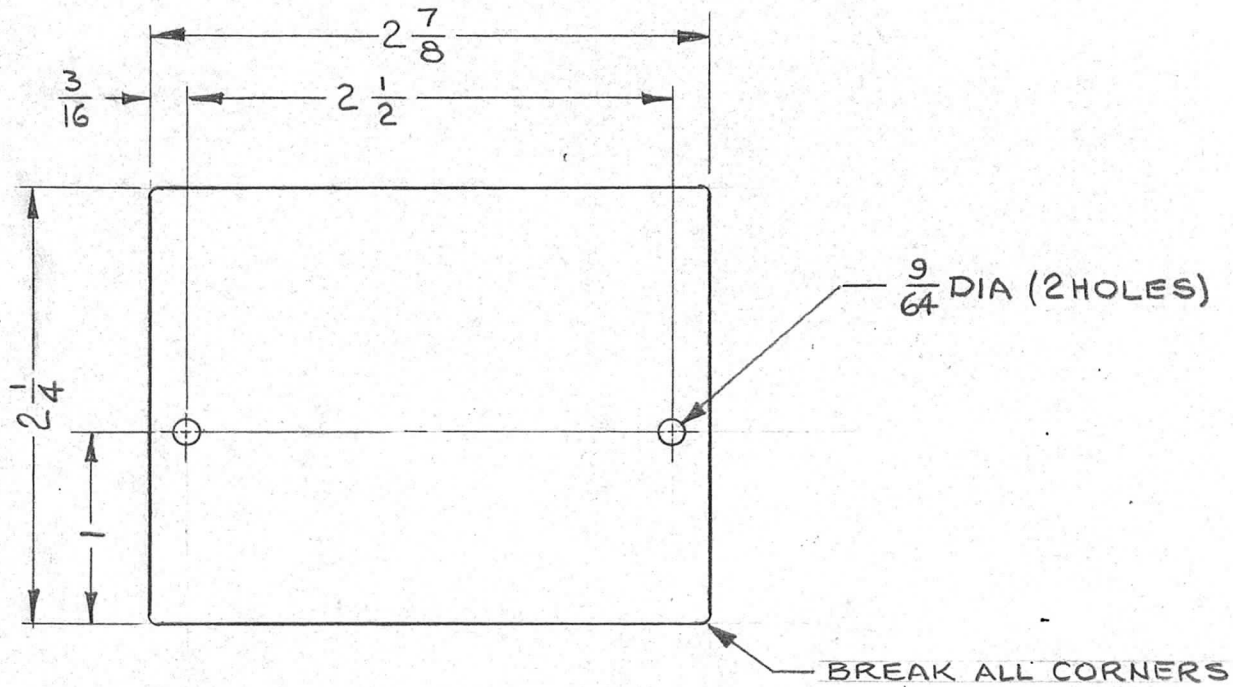
REQ. PER UNIT	USED ON			PX 851	Ø
	MODEL	ASS'Y. NO.	DATE		
1	VLRB-1		8-28-64		



HOLE	DESCRIPTION	REQ.
A	3/32 DIA.	2

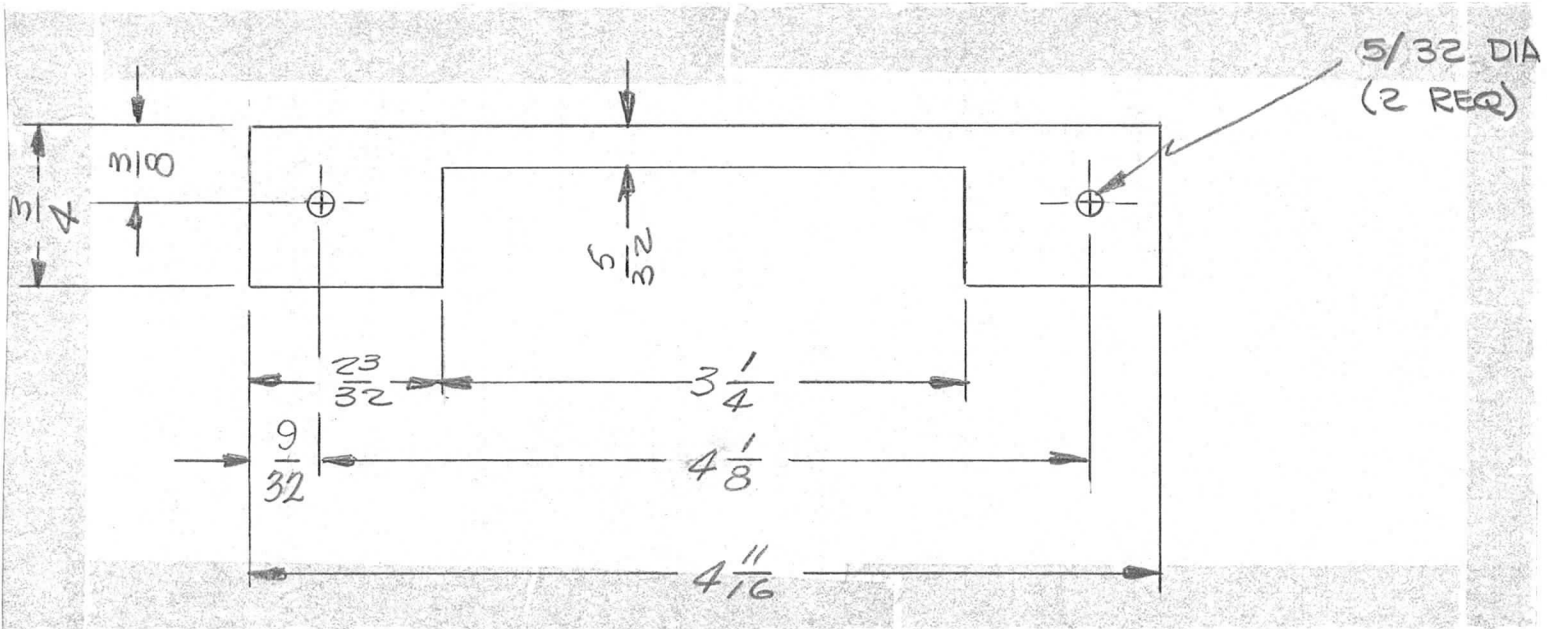
REQ.	ITEM	PART NO.	DESCRIPTION	SYMBOL
Ø	ORIG. REL. FOR PROD.	9/18/68	Ø R.G.	<i>file</i>
X1	SCRIBED LINE, RED FILLED WAS BLACK FILLED	12-2-64	<i>Sch</i>	
X	EXPER. RELEASE	8-28-64	X <i>John</i>	
SYM	DESCRIPTION	DATE	CH. NO.	DRAFTS
UNLESS OTHERWISE SPECIFIED DIMENSIONS ARE IN INCHES AND INCLUDE CHEMICALLY APPLIED OR PLATED FINISHES		SCALE	1:1	
DECIMALS .X ± .05 .XX ± .01 .XXX ± .005	TOLERANCES	FRACTIONS ± 1/64 ANGLES ± 0° 30'	CODE A	
TYPE & TEMPER		HEAT TREAT. SPEC.	DRAWN	CHECKED
FINISH & SPEC. NO.		ELEC. DES. APP.	MECH. DES. APP.	PX 851

REQ. PER UNIT	USED ON			PX852   Ø
	MODEL	ASS'Y. NO.	DATE	
1	RTTD-1	A3706	10.1.1964	



REQ. ITEM	PART NO.	EATON	DESCRIPTION	SYMBOL
	.042 THK		THE TECHNICAL MATERIEL CORP. MAMARONECK, NEW YORK	
	STOCK SIZE			
Ø	ORIGINAL RELEASE FOR PRODUCTION	2.10.65	Ø 22 JCB	
X	EXPER. RELEASE	10.1.64	X WTB J.M.	
	PLEXI-GLASS (CLEAR)		PLATE, COVER, RELAY	
	MATERIAL			
UNLESS OTHERWISE SPECIFIED DIMENSIONS ARE IN INCHES AND INCLUDE CHEMICALLY APPLIED OR PLATED FINISHES		SCALE 1:1		
DECIMALS .X ± .05 .XX ± .01 .XXX ± .005	TOLERANCES	FRACTIONS ± 1/64 ANGLES ± 0° 30'	CODE A	
	TYPE & TEMPER	HEAT TREAT. SPEC.	DRAWN WTB 2/8/65	CHECKED JCB 2/8/65
	FINISH & SPEC. NO.		ELEC. DES. APP.	MECH. DES. APP.
			FINAL APPROVAL RJC	
			PX852   Ø	

REQ. PER UNIT	USED ON			PX 854	Ø
	MODEL	ASS'Y. NO.	DATE		
1	RTIA-1	A4064	11-4-64		

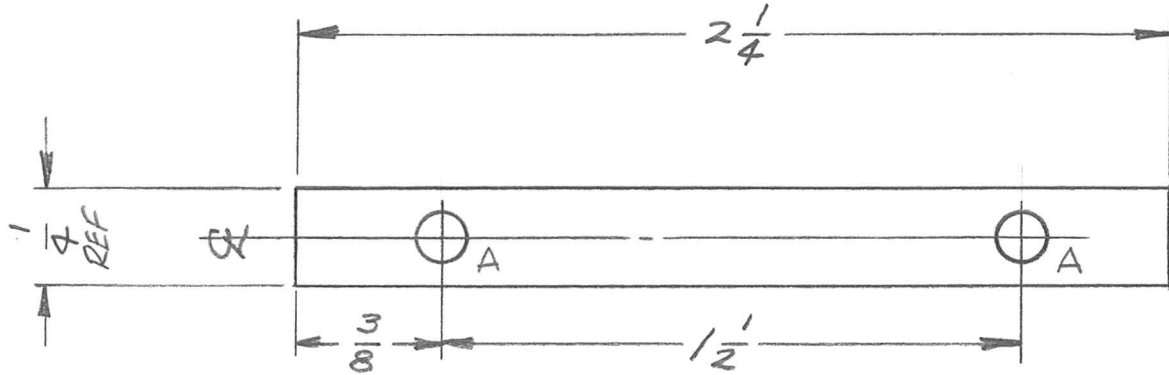


REQ.	ITEM	PART NO.	EATON	DESCRIPTION	SYMBOL									
Ø				ORIGINAL RELEASE FOR PRODUCTION										
X <sub>1</sub>				9/32 DIM WAS 1/4										
X				EXPER. RELEASE										
SYM	DESCRIPTION		DATE	CH. NO.	DRAFTS	CHECKER	ENG. APP.	SCALE	MATERIAL	TYPE & TEMPER	HEAT TREAT. SPEC.	DRAWN	CHECKED	FINAL APPROVAL
	UNLESS OTHERWISE SPECIFIED DIMENSIONS ARE IN INCHES AND INCLUDE CHEMICALLY APPLIED OR PLATED FINISHES							4	XXX P COLOR-BLK			JL	JCS	RAC
	TOLERANCES		CODE									W. JORDAN		
	.X ± .05 .XX ± .01 .XXX ± .005		A									2/8/65	2/8/65	PX 854
	FRACTIONS ± 1/64 ANGLES ± 0° 30'													
	DECIMALS													
	FINISH & SPEC. NO.													



REQ. PER UNIT	USED ON		
	MODEL	ASS'Y. NO.	DATE
30	RTIA-1	A4119	1-22-65
30	RTIA-1	A4120	1-26-65
60	RTIA-1	A4121	1-26-65

PX855 A



HOLES

A - 1/8 DIA 2 REQ.

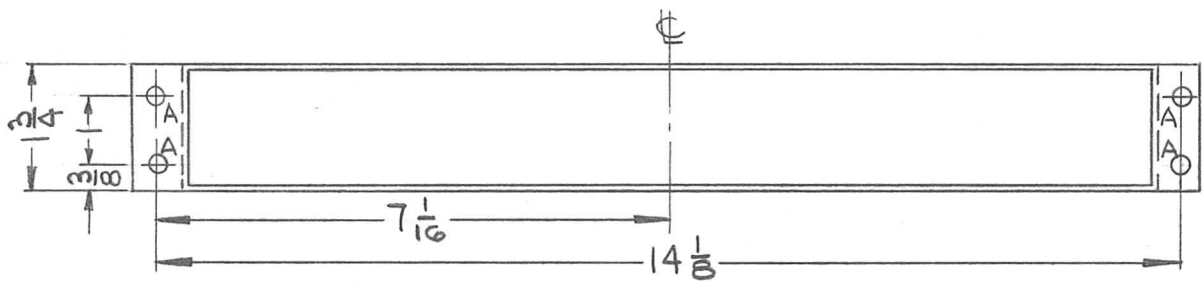
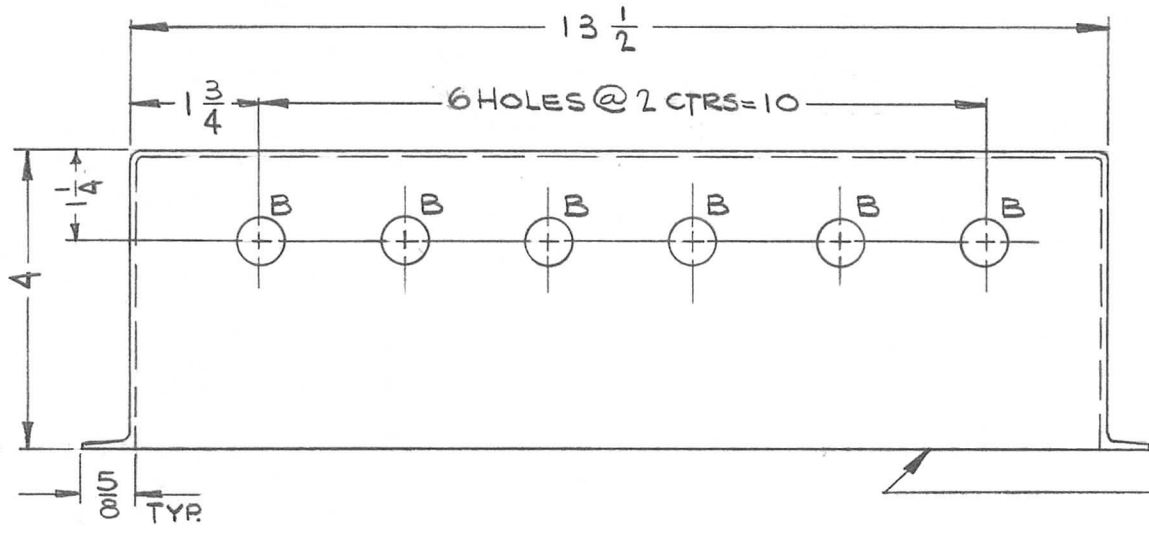
\* NOTE:  
 ACCEPTABLE MATERIAL  
 1. NYLON  
 2. TEFLON (TFE)  
 3. HIGH DENSITY POLYETHYLENE  
 (OR EQUIV.)  
 TEMP. RANGE: 0 TO 55°C

REQ. ITEM	PART NO.	F. EATON	DESCRIPTION	SYMBOL							
A	.125 THK x 1/4 WIDE		THE TECHNICAL MATERIEL CORP. MAMARONECK, NEW YORK								
Ø	STOCK SIZE		STRIP, GUIDE - PC CARD BIN								
X1	SEE NOTE *										
SYM	DESCRIPTION	DATE	CH. NO.	DRAFTS	CHECKER	ENG. APP.	MATERIAL				
	UNLESS OTHERWISE SPECIFIED DIMENSIONS ARE IN INCHES AND INCLUDE CHEMICALLY APPLIED OR PLATED FINISHES	SCALE 2:1									
DECIMALS .X ± .05 .XX ± .01 .XXX ± .005	TOLERANCES	FRACTIONS ± 1/64 ANGLES ± 0° 30'	CODE A								
							TYPE & TEMPER	HEAT TREAT. SPEC.	DRAWN J. E. Jordan 2/8/65	CHECKED W. JORDAN 2/8/65	FINAL APPROVAL PX855 A
							FINISH & SPEC. NO.		ELEC. DES. APP.	MECH. DES. APP.	

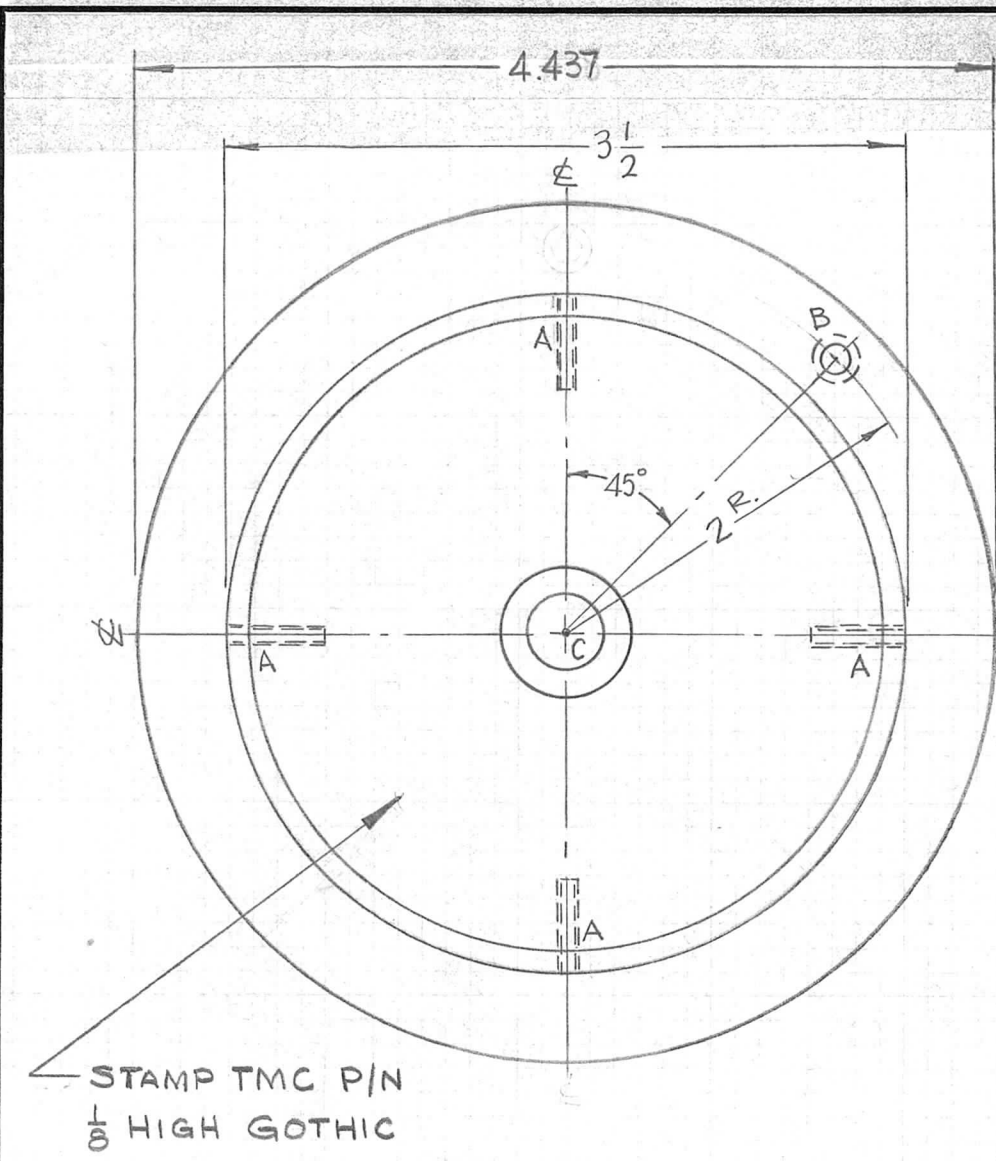
HOLE	DESCRIPTION	REQ.
A	1/64 DIA.	4
B	5/8 DIA.	6

REQ. PER UNIT	USED ON		
	MODEL	ASS'Y. NO.	DATE
1	HVRB-1		1-19-65
1	HVRC-1		1-19-65

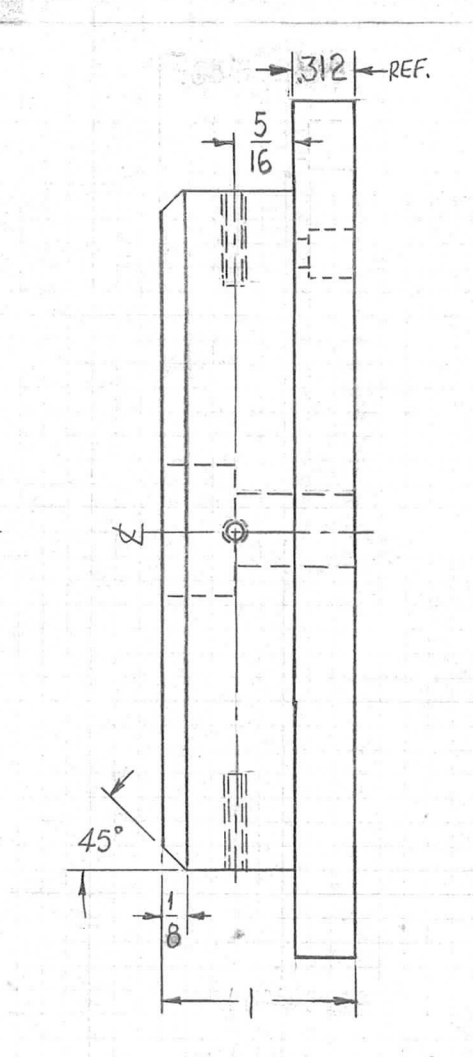
PX862 Ø



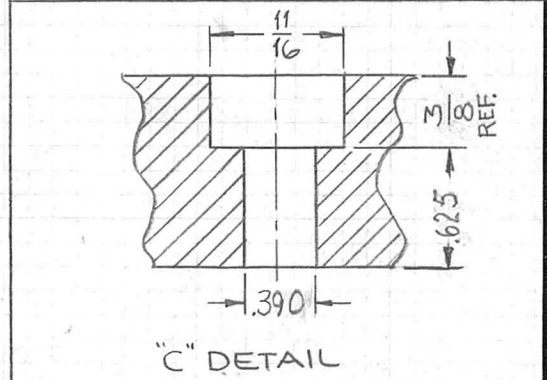
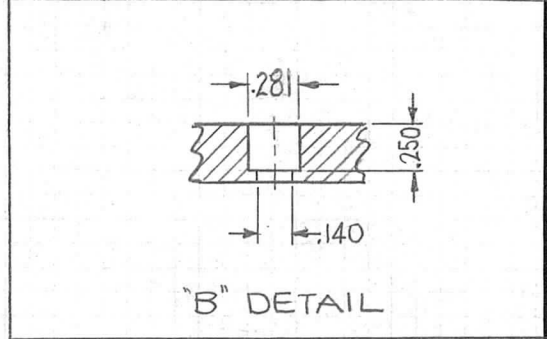
							REQ. ITEM	PART NO.	DESCRIPTION	SYMBOL
							1/16 THK		THE TECHNICAL MATERIEL CORP.	
							STOCK SIZE		MAMARONECK, NEW YORK	
							FIBERGLASS		FLUE, AIR	
							MATERIAL			
UNLESS OTHERWISE SPECIFIED DIMENSIONS ARE IN INCHES AND INCLUDE CHEMICALLY APPLIED OR PLATED FINISHES							SCALE		H.AUSTIN	
							3/8 : 1		JCB RDC	
							TYPE & TEMPER		DRAWN	
							HEAT TREAT. SPEC.		CHECKED	
							FINISH & SPEC. NO.		ELEC. DES. APP.	
									MECH. DES. APP.	
DECIMALS .X ± .05 .XX ± .01 .XXX ± .005							TOLERANCES		FRACTIONS ± 1/64 ANGLES ± 0° 30'	
CODE							PX862 Ø			



REQ. PER UNIT	USED ON			PX865 Ø
	MODEL	ASS'Y. NO.	DATE	
1	LFRA-1	A3988	11-11-64	

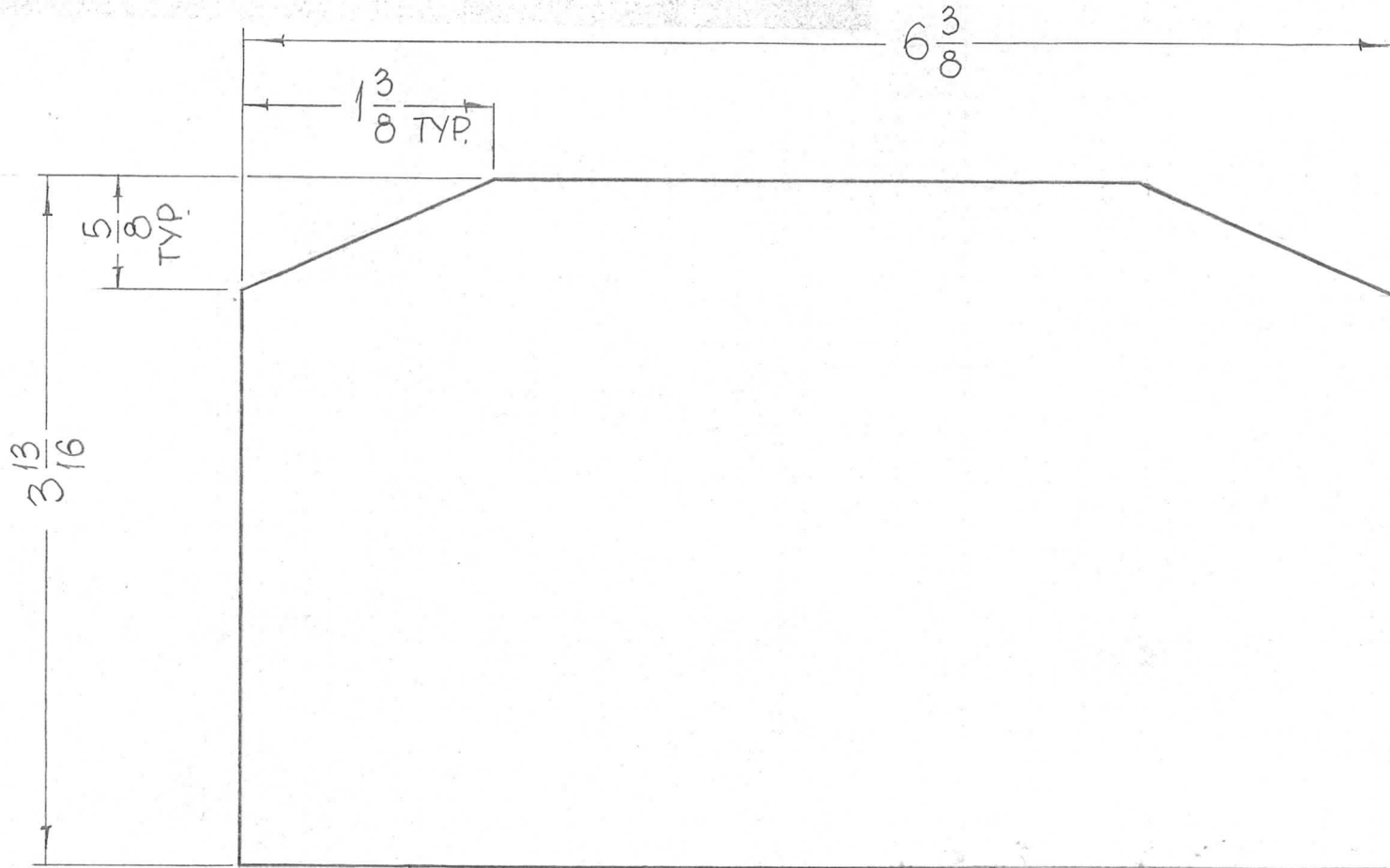


HOLE	DESCRIPTION	REQ.
A	DRILL & TAP FOR 6-32 X 1/2 DP.	4
B	SEE DETAIL	1
C	SEE DETAIL	1



REQ.	ITEM	PART NO.	DESCRIPTION	SYMBOL	
Ø	ORIGINAL RELEASE FOR PRODUCTION	11-25-64	Ø 2.L.		
X	EXP. RELEASE	11-11-64	X SRG		
SYM	DESCRIPTION	DATE	CH. NO.	DRAFTS	
UNLESS OTHERWISE SPECIFIED DIMENSIONS ARE IN INCHES AND INCLUDE CHEMICALLY APPLIED OR PLATED FINISHES		SCALE	1:1		
DECIMALS .X ± .05 .XX ± .01 .XXX ± .005	TOLERANCES	FRACTIONS ± 1/64 ANGLES ± 0° 30'	CODE	A	
		TYPE & TEMPER	HEAT TREAT. SPEC.	DRAWN	CHECKED
		FINISH & SPEC. NO.	ELEC. DES. APP.	MECH. DES. APP.	FINAL APPROVAL
		O POSE		DESCRIPTION	THE TECHNICAL MATERIEL CORP. MAMARONECK, NEW YORK
		1"		STOCK SIZE	PLATE, ROTATING
		XXX PHENOLIC BLACK		MATERIAL	
		SRG @ 11-17-64		SRG	RDE
		M. Hoffman		PX865 Ø	

REQ. PER UNIT	USED ON			PX874	Ø
	MODEL	ASS'Y. NO.	DATE		
1	SWR-10K/50		12-1-64		

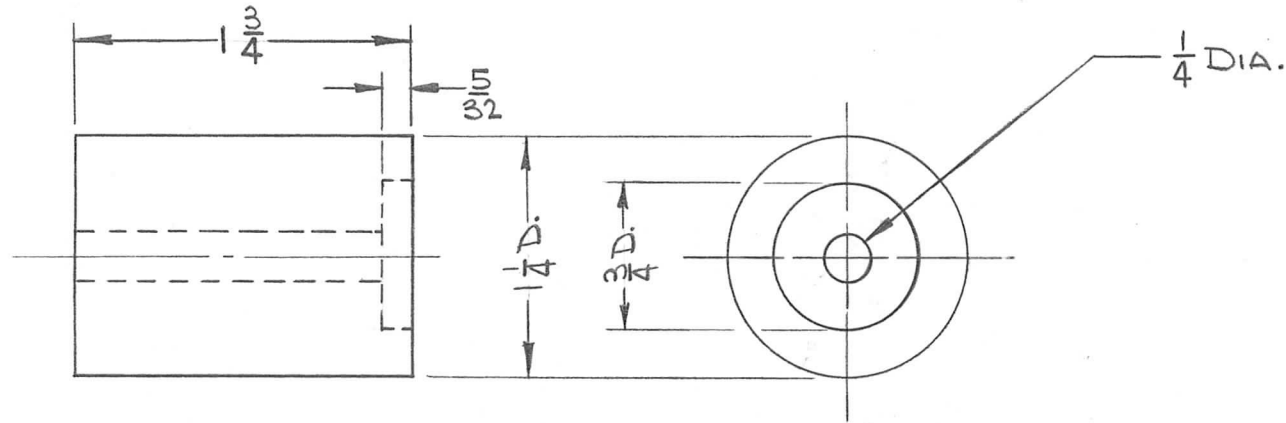


NOTE - POLISH ALL EDGES.

REQ.	ITEM	PART NO.	L. BUTLER DESCRIPTION			SYMBOL
		3/32 THICK	THE TECHNICAL MATERIEL CORP.			
		STOCK SIZE	MAMARONECK, NEW YORK			
Ø	ORIGINAL RELEASE FOR PRODUCTION	10-5-64	H	C		
X	EXP. RELEASE	12-1-64	X	SRG		
SYM	DESCRIPTION	DATE	CH. NO.	DRAFTS	CHECKER	ENG. APP.
UNLESS OTHERWISE SPECIFIED DIMENSIONS ARE IN INCHES AND INCLUDE CHEMICALLY APPLIED OR PLATED FINISHES		SCALE	1:1			
DECIMALS	FRACTIONS	CODE				
.X ± .05	± 1/64	A				
.XX ± .01	ANGLES					
.XXX ± .005	± 0° 30'					
TOLERANCES						
MATERIAL		CLEAR	John C Biele			
TYPE & TEMPER		NONE	12/5/65			
HEAT TREAT. SPEC.			M. A. Han			
FINISH & SPEC. NO.			DRAWN			
ELEC. DES. APP.			CHECKED			
MECH. DES. APP.			FINAL APPROVAL			
			PX874			
			Ø			

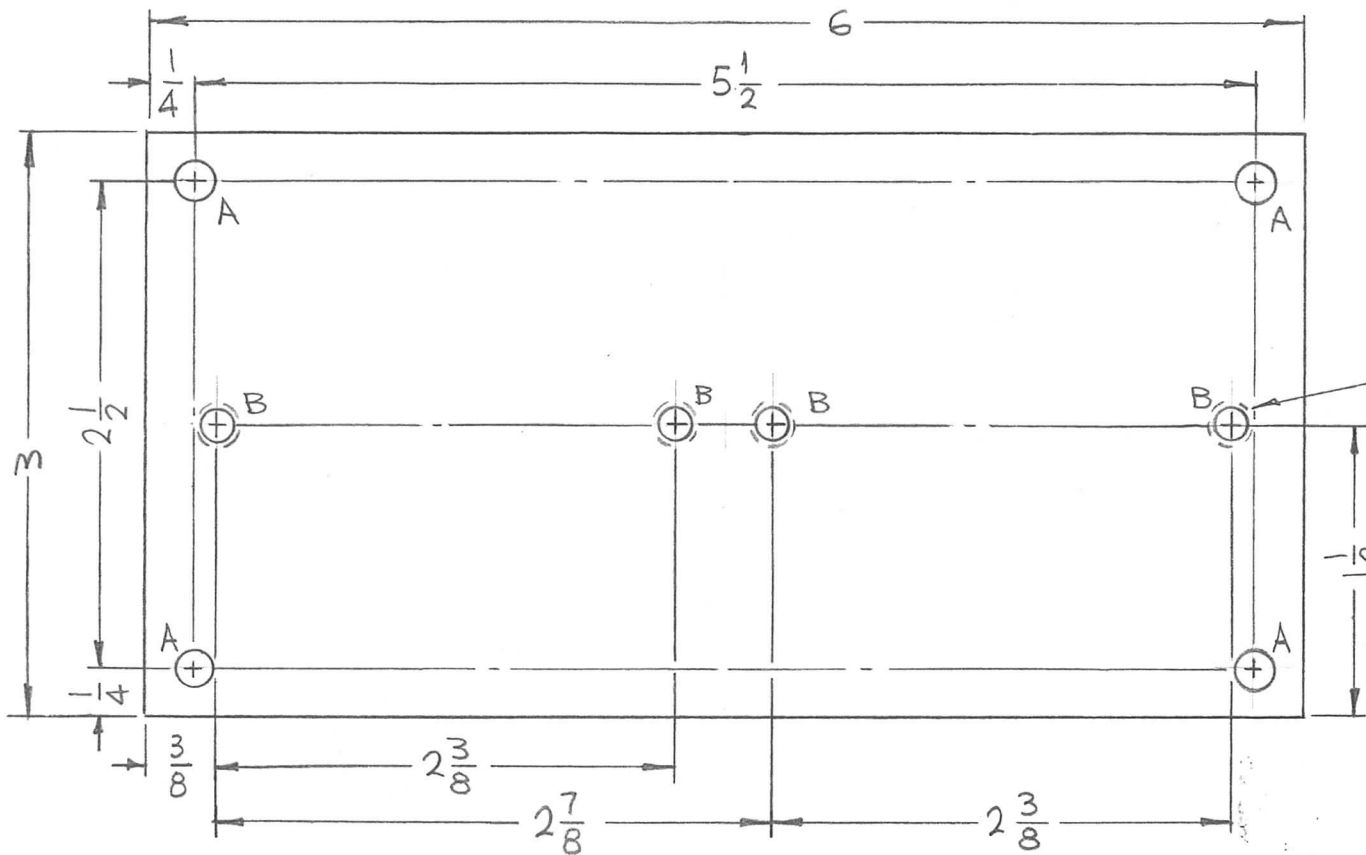


REQ. PER UNIT	USED ON			PX879	Ø
	MODEL	ASS'Y. NO.	DATE		
7	HVRB-1	AX543	12-22-64		



SYM	DESCRIPTION	DATE	CH. NO.	DRAFTS	CHECKER	ENG. APP.	REQ. ITEM	PART NO.	DESCRIPTION	SYMBOL	
Ø	ORIGINAL RELEASE FOR PRODUCTION	11/17/65	<del>11</del>	Jc					THE TECHNICAL MATERIEL CORP. MAMARONECK. NEW YORK		
X	EXPER. RELEASE	12-23-64		HLA				GII EPOXY		INSULATOR DISK	
UNLESS OTHERWISE SPECIFIED DIMENSIONS ARE IN INCHES AND INCLUDE CHEMICALLY APPLIED OR PLATED FINISHES							SCALE				
							1:1				
DECIMALS .X ± .05 .XX ± .01 .XXX ± .005							TOLERANCES		FRACTIONS ± 1/64 ANGLES ± 0° 30'		
CODE A											
							NATURAL				
							FINISH & SPEC. NO.				
							H. AUSTIN		R. A. King 11/14/65		
							DRAWN		CHECKED		
							ELEC. DES. APP.		MECH. DES. APP.		
									PX879 Ø		

REQ. PER UNIT	USED ON		PX 886	Ø
	MODEL	ASS'Y. NO.		
1	GPT-10KLF		11-3-65	



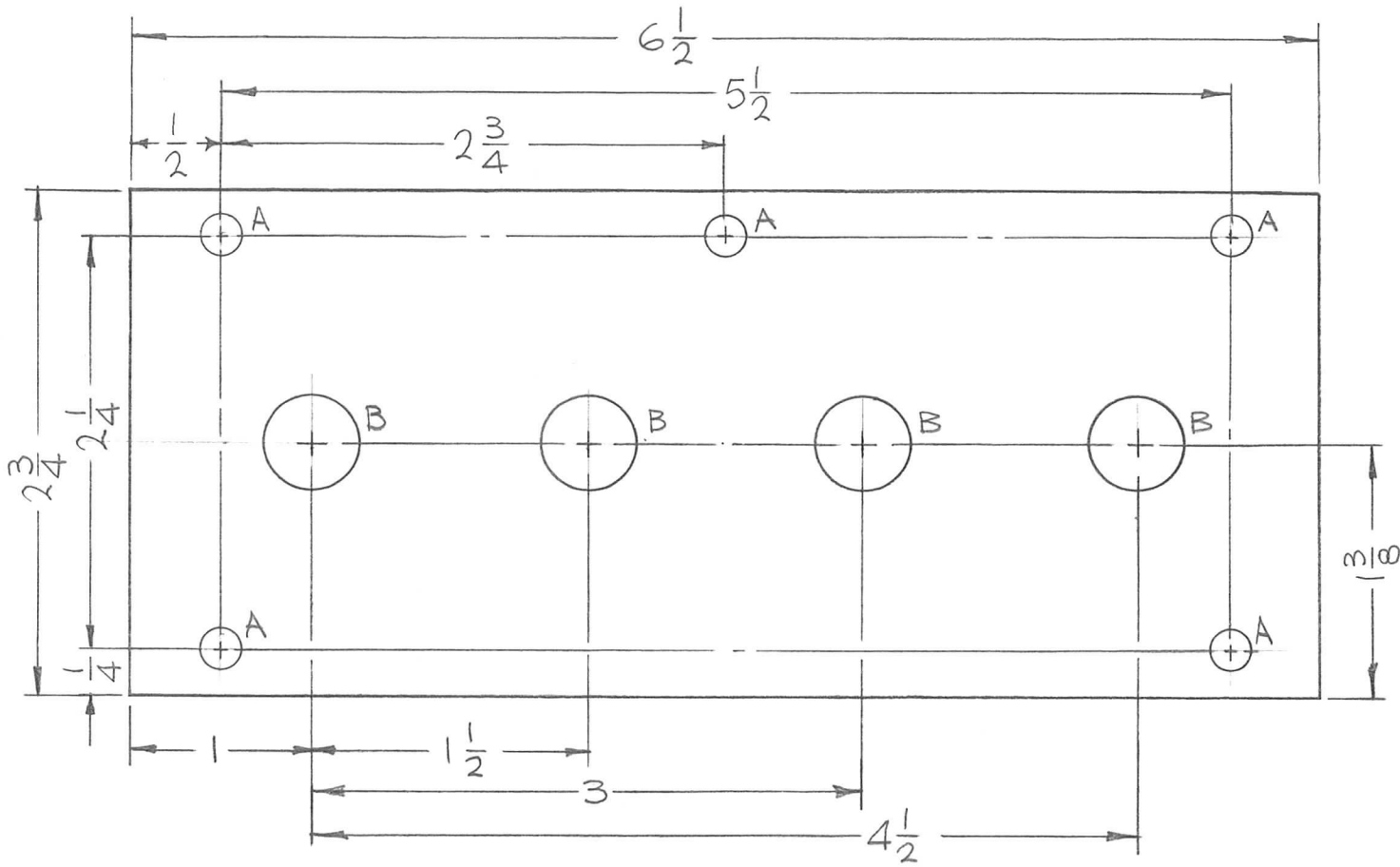
HOLES:  
 A - 13/64 DIA. (4REQ.)  
 B - INSERT ITEM 1 (4REQ.)

① INSERT IN ALL B HOLES,

REF: LD 1685

							4	1	NT 139SC08-15-S	INSERT, SCREW THREAD	B
							REQ.	ITEM	PART NO.	F. BUDETTI DESCRIPTION	SYMBOL
							3/8 THICK			THE TECHNICAL MATERIEL CORP.	
							STOCK SIZE			MAMARONECK, NEW YORK	
							G-11 EPOXY			BOARD, MTG. CAPACITORS	
							MATERIAL				
Ø ORIGINAL RELEASE	12/20/65										
SYM	DESCRIPTION	DATE	CH. NO.	DRAFTS	CHECKER	ENG. APP.					
UNLESS OTHERWISE SPECIFIED DIMENSIONS ARE IN INCHES AND INCLUDE CHEMICALLY APPLIED OR PLATED FINISHES		SCALE									
		1:1									
DECIMALS	FRACTIONS	CODE									
.X ± .05	± 1/64	A									
.XX ± .01	ANGLES										
.XXX ± .005	± 0° 30'										
							TYPE & TEMPER	HEAT TREAT. SPEC.	DRAWN	CHECKED	FINAL APPROVAL
							FINISH & SPEC. NO.	ELEC. DES. APP.	MECH. DES. APP.	PX 886	Ø

REQ. PER UNIT	USED ON			PX 889	Ø
	MODEL	ASS'Y. NO.	DATE		
1	GPT-10KLF	AP125	3-1-66		



HOLES:  
 A ~ 13/64 DIA. (5 REQ.)  
 B ~ 1/2 DIA. (4 REQ.)

1695

REQ.	ITEM	PART NO.	F. BUDETTI	DESCRIPTION	SYMBOL	
		3/32 THICK		THE TECHNICAL MATERIEL CORP.		
		STOCK SIZE		MAMARONECK, NEW YORK		
		EPOXY		BOARD, FILAMENT		
		MATERIAL				
Ø	ORIGINAL RELEASE FOR PRODUCTION	3-1-66	Jc	qcb		
SYM	DESCRIPTION	DATE	CH. NO.	DRAFTS	CHECKER	ENG. APP.
UNLESS OTHERWISE SPECIFIED DIMENSIONS ARE IN INCHES AND INCLUDE CHEMICALLY APPLIED OR PLATED FINISHES		SCALE 1:1				
DECIMALS .X ± .05 .XX ± .01 .XXX ± .005	TOLERANCES	FRACTIONS ± 1/64 ANGLES ± 0° 30'	CODE A			
				G-11		
				TYPE & TEMPER	HEAT TREAT. SPEC.	
				DRAWN	CHECKED	FINAL APPROVAL
						PX 889
				FINISH & SPEC. NO.	ELEC. DES. APP.	MECH. DES. APP.