

THE CONTENTS OF THIS DRAWING ARE THE EXCLUSIVE PROPERTY OF THE TECHNICAL MATERIEL CORP. ITS UNAUTHORIZED USE OR REPRODUCTION IN WHOLE OR IN PART IS STRICTLY FORBIDDEN.

REQ. PER UNIT

4

USED ON

MODEL

AFC-2

ASS'Y. NO.

DATE

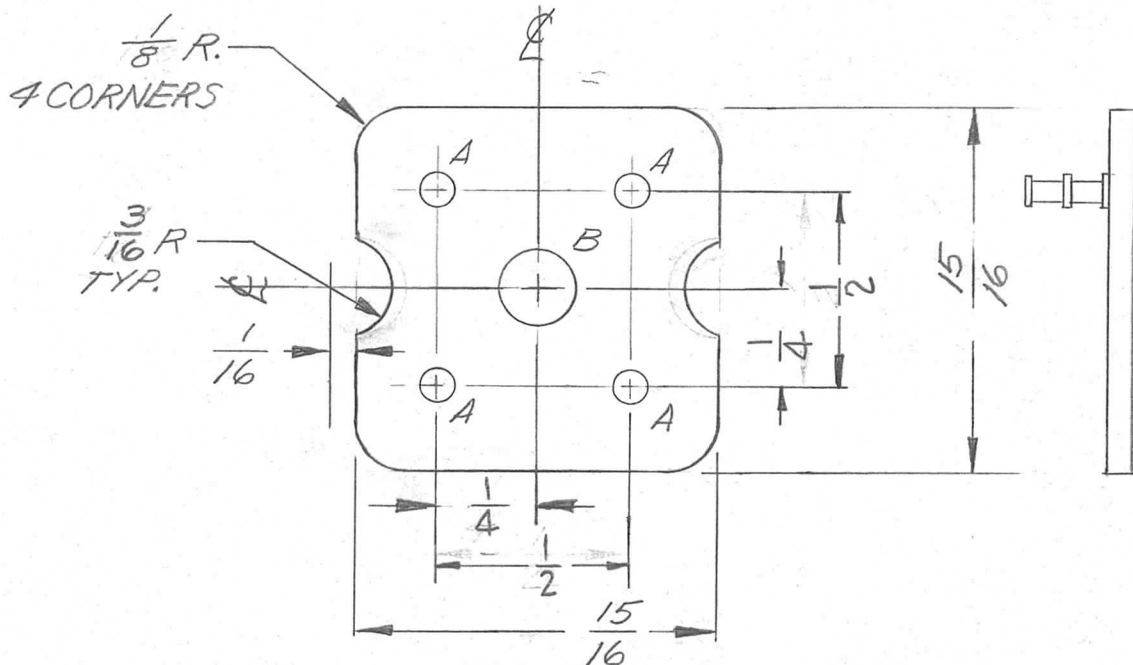
11-4-61

PX-635

A

TMC PART NO.	"B" HOLE DIA.
PX-635-1	3/16

A - 5/64 DIA. - 4 REQ.  
B - (SEE CHART) - 1 REQ.



NOTICE TO PERSONS RECEIVING THIS DRAWING

THE TECHNICAL MATERIEL CORPORATION claims proprietary right in the material disclosed herein. This drawing is issued in confidence for engineering information only and may not be reproduced or used to manufacture anything shown hereon without permission from THE TECHNICAL MATERIEL CORPORATION to the user. This drawing is loaned for mutual assistance and is subject to recall at any time.

Property of:

THE TECHNICAL MATERIEL CORPORATION  
MAMARONECK, NEW YORK

						4	1	TE-168-4B	TERMINAL, MINIATURE	A	
						REQ.	ITEM	PART NO.	DESCRIPTION	SYMBOL	
								1/16	THE TECHNICAL MATERIEL CORP.		
								STOCK SIZE	MAMARONECK, NEW YORK		
A	3/16 R. WAS 1/8 R.	1-30-63	8120	WJ	WJ			PHENOLIC	BOARD, MTS APP.		
SYM	DESCRIPTION	DATE	CH. NO.	DRAFTS	CHECKER	ENG. APP.		MATERIAL	TRANSFORMER, 4 LUGS		
UNLESS OTHERWISE SPECIFIED: DIMENSIONS ARE IN INCHES		SCALE: DO NOT SCALE				LAMINATE XXX P		WR	RUZZO	STM	
TOLERANCES ON FRAC. ± 1/64 DEC. ± .005 ANGLES ± 1/2°		MAXIMUM ALLOWABLE TOLERANCES HAVE BEEN DETERMINED AND ANY DEVIATIONS WILL BE CAUSE FOR REJECTION. REMOVE ALL BURRS AND SHARP EDGES				TYPE & TEMPER HEAT TREAT. SPEC.		NATURAL	DRAWN	CHECKED	FINAL APPROVAL
						FINISH & SPEC. NO.				PX-635	A
								ELEC. DES. APP.	MECH. DES. APP.		