

REQ. PER. UNIT	USED ON		
	MODEL	ASS'Y. NO.	DATE
1	CHC-1	A-1965	10-6-60

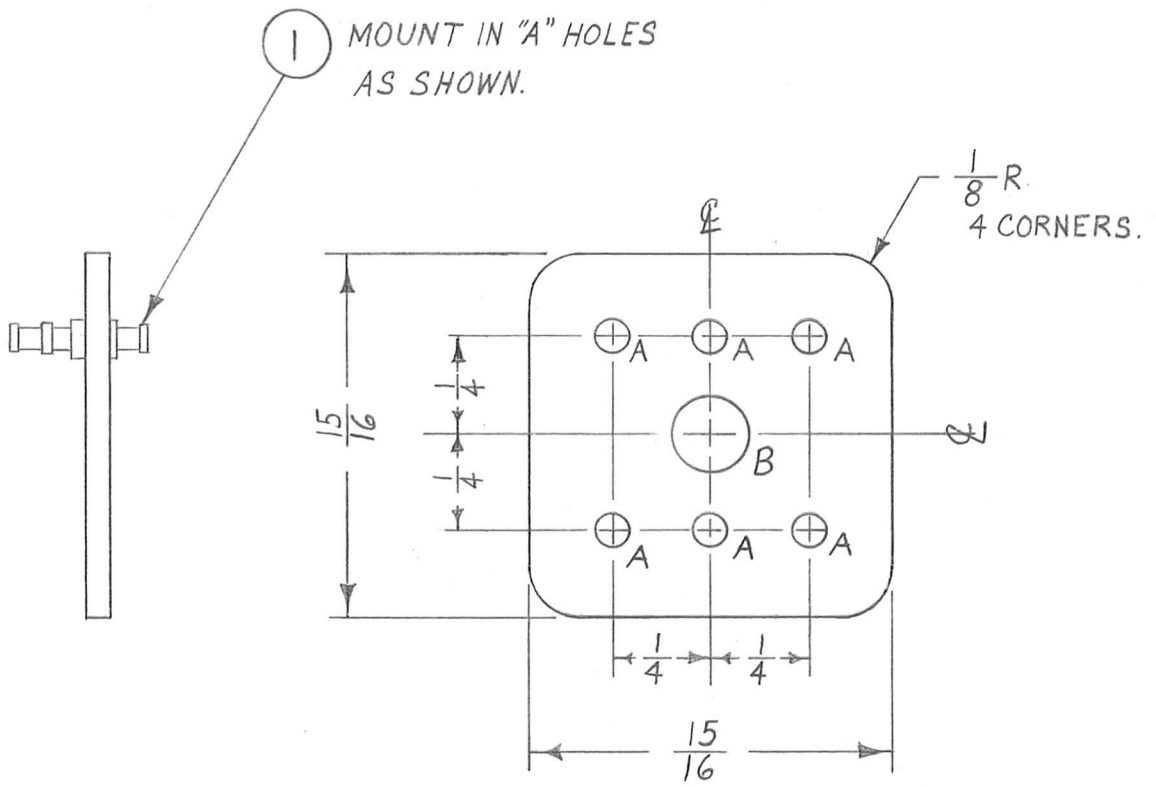
PX-595

A ~  $\frac{5}{64}$  DIA.

6 REQ.

B ~ SEE CHART

1 "



TMC PART NO.	"B" HOLE DIA.
PX-595-1	3/16
PX-595-2	1/4

6		1		TE-168-4B			TERMINAL, MINIATURE					
REQ.	ITEM	PART NO.					DESCRIPTION			SYMBOL		
		1/16					THE TECHNICAL MATERIEL CORP.					
		STOCK SIZE					MAMARONECK, NEW YORK					
		PHENOLIC					TERMINAL BOARD, TRANSFORMER, 6 LUGS					
		MATERIAL										
ISSUE	ITEM	CHANGED FROM	DATE	CH. NO.	DRAFTS	CHECKER	ENG. APP.	LAMINATE XXXP				
TOLERANCES			SCALE: 1:2			DRAWN			CHECKED	FINAL APPROVAL		
DEC. DIM. ±			MAXIMUM ALLOWABLE TOLERANCES HAVE BEEN DETERMINED AND ANY DEVIATIONS WILL BE CAUSE FOR REJECTION. REMOVE ALL BURRS AND SHARP EDGES			NATURAL						
FRAC. DIM. ± 1/64						FINISH & SPEC. NO.			ELEC. DES. APP			MECH. DES. APP
ANGULAR DIM. ±									PX-595			