

NOTICE TO PERSONS RECEIVING THIS DRAWING

THE TECHNICAL MATERIEL CORPORATION claims proprietary right in the material disclosed hereon. This drawing is issued in confidence for engineering information only and may not be reproduced or used to manufacture anything shown hereon without permission from THE TECHNICAL MATERIEL CORPORATION to the user. This drawing is loaned for mutual assistance and is subject to recall at any time.

Property of:

THE TECHNICAL MATERIEL CORPORATION
MAMARONECK, NEW YORK

REQ. PER. UNIT	USED ON			PX-579	A
	MODEL	ASS'Y. NO.	DATE		
1	GPT-10KP		8-5-60		

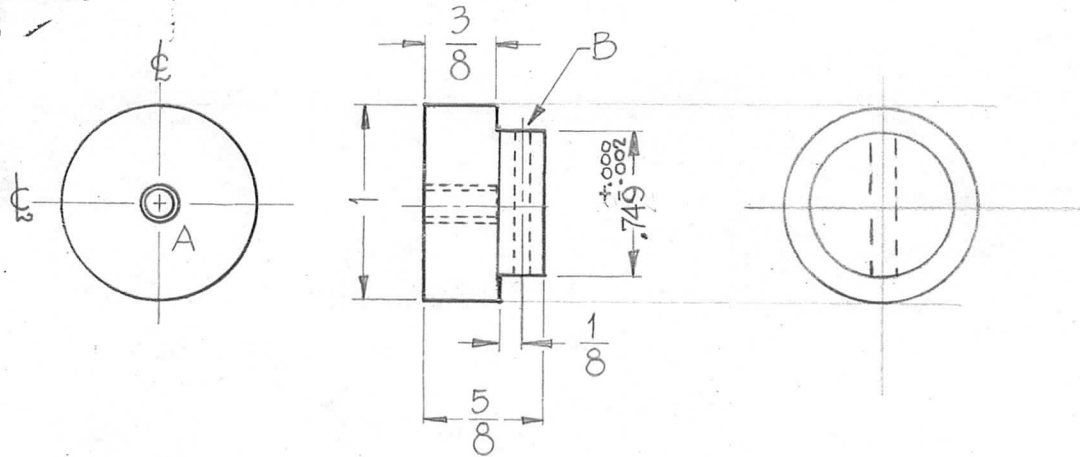
HOLE

- A ~ Dr. & Tap for 8-32 (3/8" deep)
- B ~ Dr. for 4-40 Self Tap Screw

Rec'd.

1

1



								REQ. ITEM	PART NO.	DESCRIPTION			SYMBOL
								THE TECHNICAL MATERIEL CORP.					
								MAMARONECK, NEW YORK					
								EPOXY			CAP, END, CORE FORM		
								MATERIAL					
								G11					
								TYPE & TEMPER			HEAT TREAT. SPEC.		
								DRAWN			CHECKED		
								FINISH & SPEC. NO.			ELEC. DES. APP. MECH. DES. APP.		
Δ	1	DIM. .749 ± .002 WAS 3/4	5-10-63	8954									
ISSUE ITEM		CHANGED FROM	DATE	CH. NO.	DRAFTS	CHECKER	ENG. APP.						
TOLERANCES			SCALE: H					D.S. 8-5-60		Hue		AMB	
DEC. DIM.			MAXIMUM ALLOWABLE TOLERANCES HAVE BEEN DETERMINED AND ANY DEVIATIONS WILL BE CAUSE FOR REJECTION. REMOVE ALL BURRS AND SHARP EDGES										
FRAC. DIM. ± 1/64													
ANGULAR DIM. ±												PX-579 A	