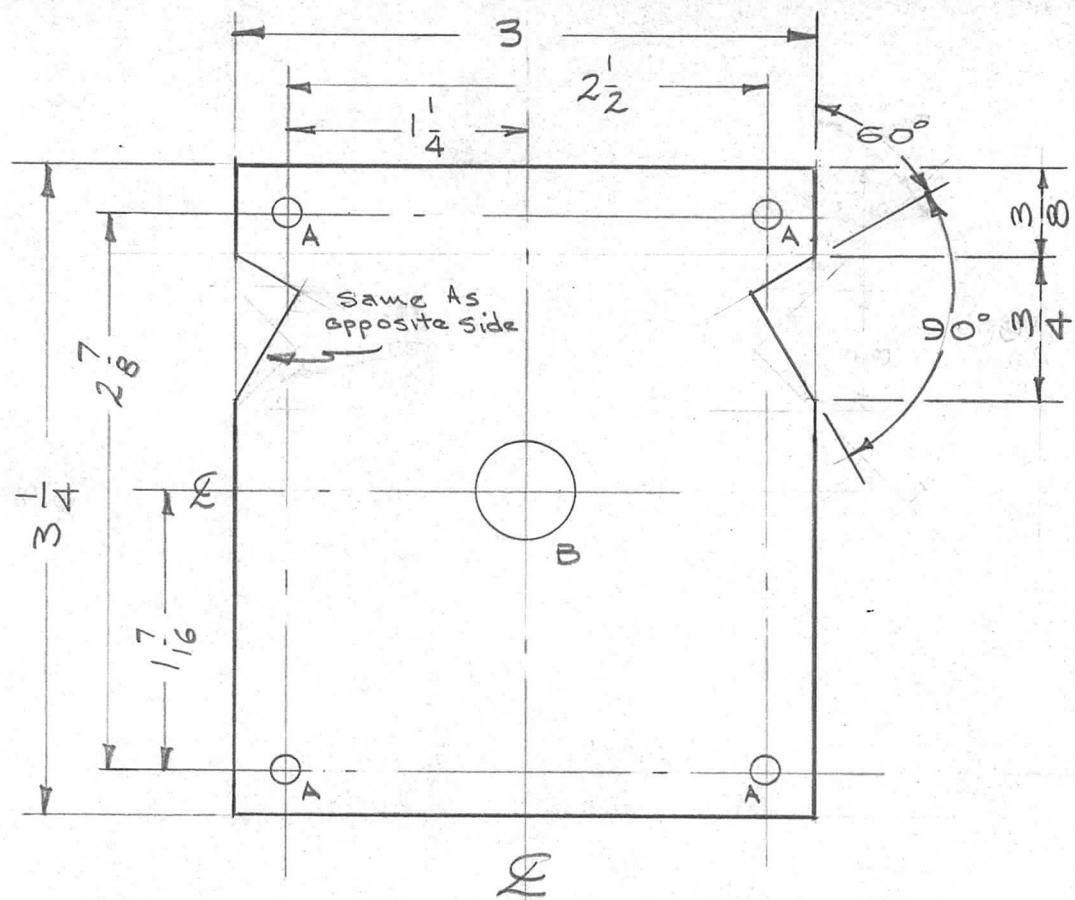


HOLES
 A - 1/64 (.171) D. - 4
 B - .515 D - 1

REQ. PER. UNIT	USED ON			PK-482	B
	MODEL	ASS'Y. NO.	DATE		
1	ATS-50(70) Tu 2	A-1769	6-11-59		



ISSUE	ITEM	CHANGED FROM	DATE	CH. NO.	DRAFTS	CHECKER	ENG. APP.
B	1	B Hole was 1/2 (.500) D	10/1/59	1387	16	<i>[Signature]</i>	<i>[Signature]</i>
A	1	3-1/4 O/A WAS 3-3/8 NOTCHES WERE 5/8 - 5/8	9/22/59	1318	16	<i>[Signature]</i>	<i>[Signature]</i>
TOLERANCES			SCALE: <i>H</i>				
DEC. DIM. ± FRAC. DIM. ± 1/64 ANGULAR DIM. ±			MAXIMUM ALLOWABLE TOLERANCES HAVE BEEN DETERMINED AND ANY DEVIATIONS WILL BE CAUSE FOR REJECTION. REMOVE ALL BURRS AND SHARP EDGES				

REQ.	ITEM	PART NO.	DESCRIPTION		SYMBOL
		1/4 - THICK	THE TECHNICAL MATERIEL CORP.		
		STOCK SIZE	MAMARONECK, NEW YORK		
		TEFLON	INSULATOR, REAR		
		MATERIAL	(Tuning Coil)		
		<i>[Signature]</i>	<i>[Signature]</i>	<i>[Signature]</i>	
		TYPE & TEMPER	DRAWN	CHECKED	FINAL APPROVAL
		HEATTREAT. SPEC.	<i>[Signature]</i>		
		FINISH & SPEC. NO.	ELEC. DES. APP	MECH. DES. APP	
					PX-482 B