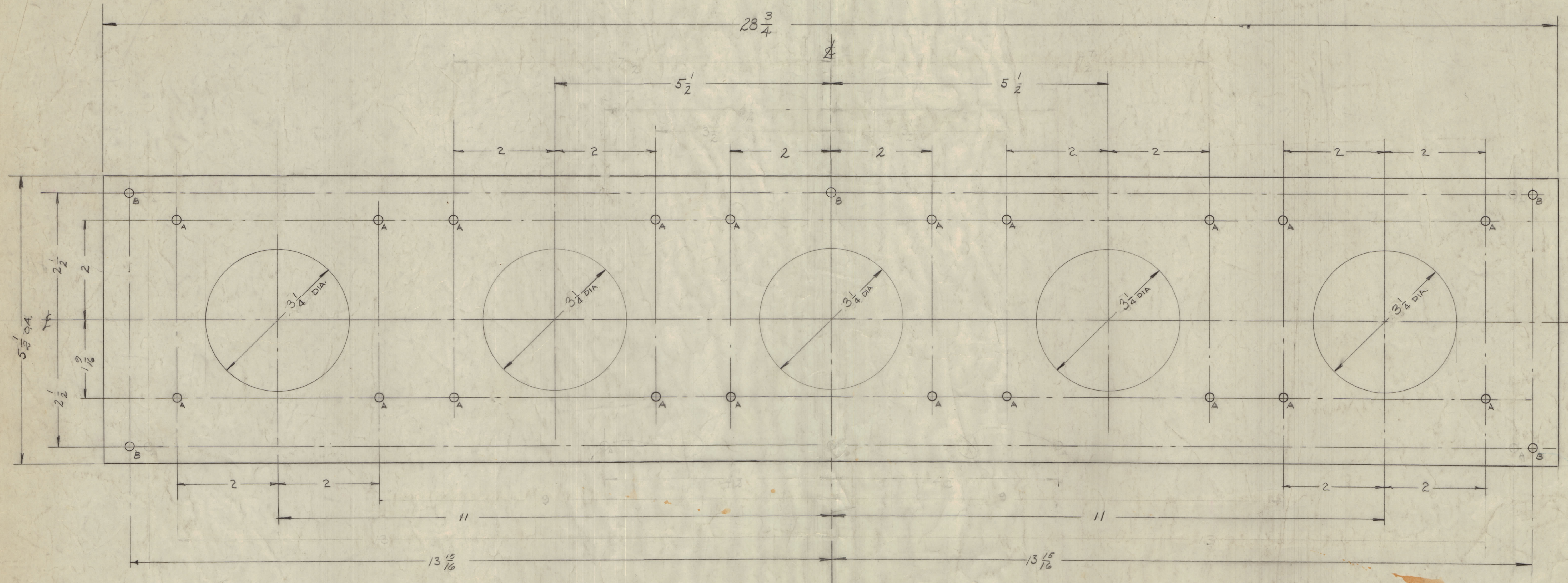


IF IT IS FOUND DESIRABLE TO CHANGE ANY TOLERANCE OR OTHER DETAIL SPECIFIED ON THIS DRAWING NOTIFY THE PURCHASER PROMPTLY.  
 MAXIMUM ALLOWABLE TOLERANCES HAVE BEEN DETERMINED AND DEVIATIONS WILL BE CAUSE FOR REJECTION. REMOVE ALL BURRS AND SHARP EDGES

HOLES	REQ'D
A - 3/16 (.187) DIA.	20
B - 13/64 (.203) DIA.	5



PX-451 J

NOTICE TO PERSONS RECEIVING THIS DRAWING

THE TECHNICAL MATERIEL CORPORATION claims proprietary right in the material disclosed herein. This drawing is issued in confidence for engineering information only and may not be reproduced or used to manufacture anything shown herein without permission from THE TECHNICAL MATERIEL CORPORATION to the user. This drawing is loaned for mutual assistance and is subject to recall at any time.  
 Property of:  
 THE TECHNICAL MATERIEL CORPORATION  
 MAMARONECK, NEW YORK

- LD-2239 MARKING, METER PANEL AM122-2
- LD-1486(B) ENGRAVING, FRONT } AM124
- LETTERING, REAR } GPT10 KLF
- LD-1424 MARKING FRONT PANEL AT-106
- LD-726 LETTERING REAR AT-101 } FOR SPARE
- LD-691 LETTERING REAR AM-109 } PARTS ONLY
- LD-696 (B) ENGRAVING, FRONT } AT-101
- LD-870 (B) LETTERING, REAR } GPT-40KE
- LD-692 (B) ENGRAVING, FRONT } AM-109
- LD-869 (B) LETTERING, REAR } GPT-40KE
- Ref: LD-506 (B) Engraving, Front } AT-101
- LD-541 (B) Lettering, Rear } GPT-10K
- LD-1382

ISSUE	ITEM	CHANGED FROM	DATE	GN. NO.	DRAFTS	CHECKER	ENG. APP.
J	-	REF. LD2239 ADDED	11/30/61	CC	ENJ		
H	-	CLERICAL CHANGE	12/6/61	CC	M/M		
G	-	LD1424 ADDED	2-18-64	-	JF		
F	-	CLERICAL CHANGE	3-1-64	-	JF		
E	1	3-1/4 DIA HOLES WERE 3"	3-16-61	4437	DM		
D	1	LD REFS. REVISED	11-28-60	2605	DM		
C	1	GPT-40K ADDED	1-27-60	-	DM		
B	1	3" WAS 2 7/8 DIA.	3/27/61	1306	DM		
A	1	DIA. CHG. 3 1/2 WAS 3 5/8	2/1/62	-	DM		

SCALE: FULL - DO NOT SCALE  
 TOLERANCES  
 ALL DEC. DIM. ±  
 OTHERS FRAC. DIM. ±  
 ANGULAR DIM. ±  
 DRILL PUNCH, COMMERCIAL STOCK SIZES AND MANUFACTURERS TOLERANCES ARE NOT INCLUDED.

REQ. PER UNIT	MODEL	PROJECT NO.	ASSY. NO.	DATE
1	AM 124	GPT10KLF		11-4-65
1	AT-101	GPT-40K		1-27-60
1	AM-109	GPT-40K		1-27-60
1	AX-173	GPT-10K		2-10-59

REQ. ITEM	PART NO.	DESCRIPTION	SYMBOL
1	XXXX	1/4 THICK STOCK SIZE	
1	PHEBOLIC	THE TECHNICAL MATERIEL CORP. MAMARONECK, NEW YORK	
1	XXXX	PANEL, METER	
1	XXXX	MATERIAL WEIGHT PER PC.	
1	XXXX	TYPE & TEMPER	
1	XXXX	HEAT TREAT. SPEC.	
1	XXXX	FINISH & SPEC. NO.	