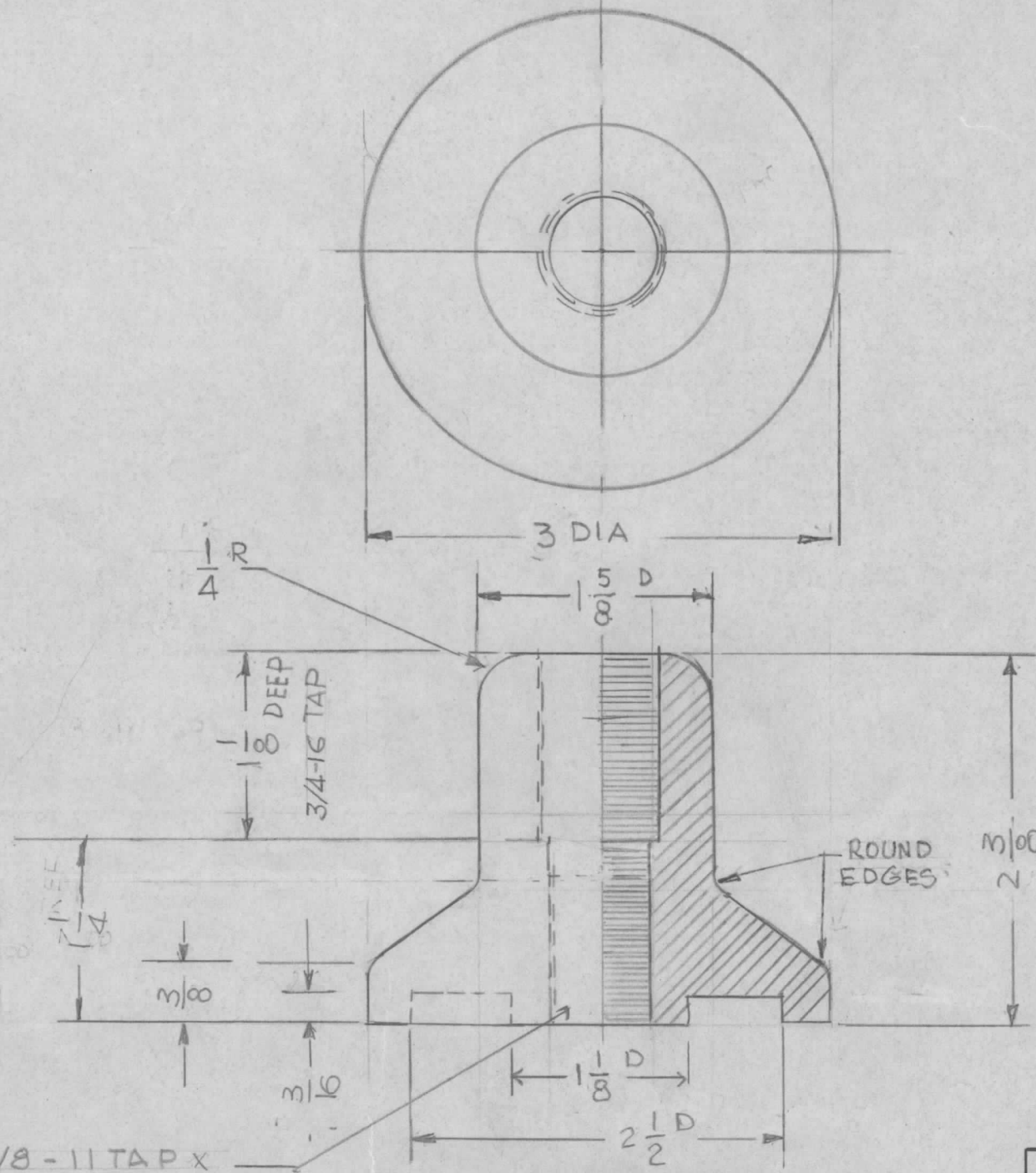


REVISIONS							
E.M.N. NO.	DRAFT	CHKD	ZONE	LTR	DESCRIPTION	DATE	APPROVED
	CDL			A	REDRAWN & UPDATED	1-3-90	



5/8-11 TAP x
1/4 DEEP

REQ'D	ITEM	PART NUMBER	DESCRIPTION	SYM.
LIST OF MATERIAL				
THE TECHNICAL MATERIEL CORP. MAMARONECK, NEW YORK				
CAP ANT. MOUNTG.				
SIZE	CODE IDENT. NO.	DWG NO.	ISSUE	
B	82679	PO215	A	
SCALE	1:1	SHEET	OF	
		1		

1	VRQ-6	
QTY / UNIT	MODEL USED ON	ASS'Y NO.
	APPLICATION	
	CODE	

UNLESS OTHERWISE SPECIFIED
DIMENSIONS ARE IN INCHES
AND INCLUDE CHEMICALLY APPLIED
OR PLATED FINISHES

DECIMALS
.X ± .05
.XX ± .01
.XXX ± .005

FRACTIONS
1/64
ANGLES
0° - 30'

TOLS.

MATERIAL
ALUMINUM

FINISH
NONE

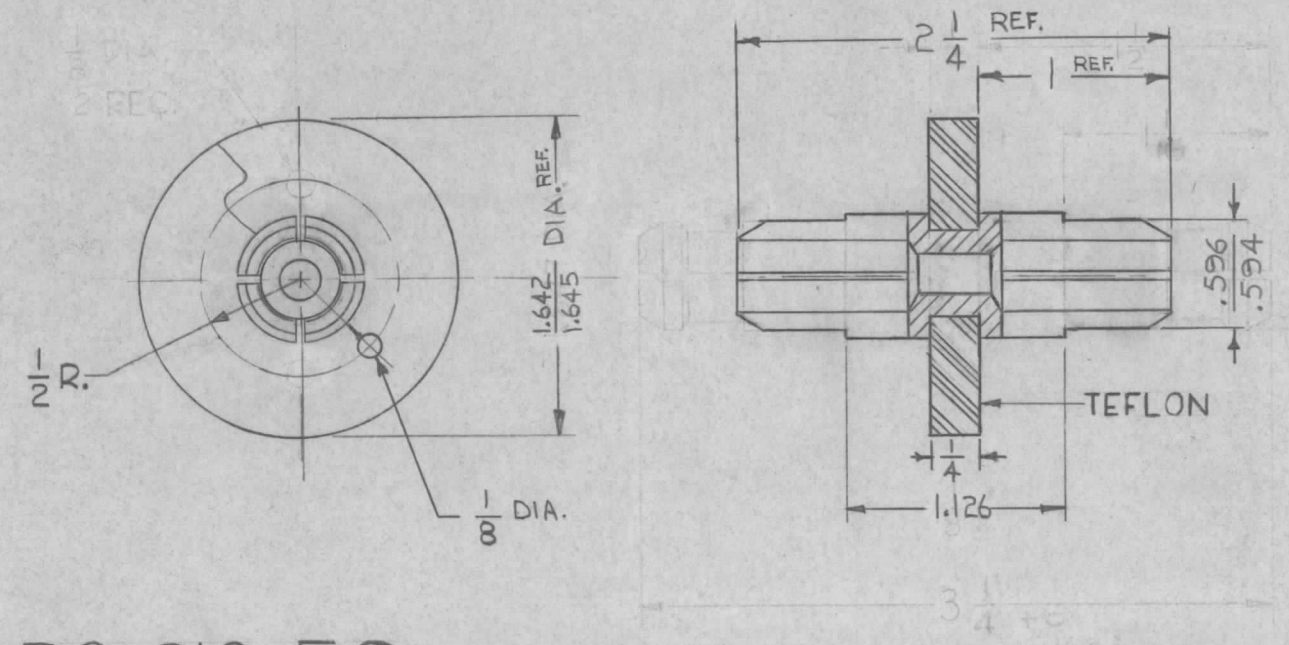
FINAL APPROVAL	DATE
MECH. DES.	DATE
ELECT. DES.	DATE
CHECKED	DATE
DRAWN <i>G. DeLuna</i>	DATE 1-3-89

NOTICE TO PERSONS RECEIVING THIS DRAWING
THE TECHNICAL MATERIEL CORPORATION claims proprietary right in the material disclosed hereon. This drawing is issued in confidence for engineering information only and may not be reproduced or used to manufacture anything shown hereon without permission from THE TECHNICAL MATERIEL CORPORATION to the user. This drawing is loaned for mutual assistance and is subject to recall at any time.

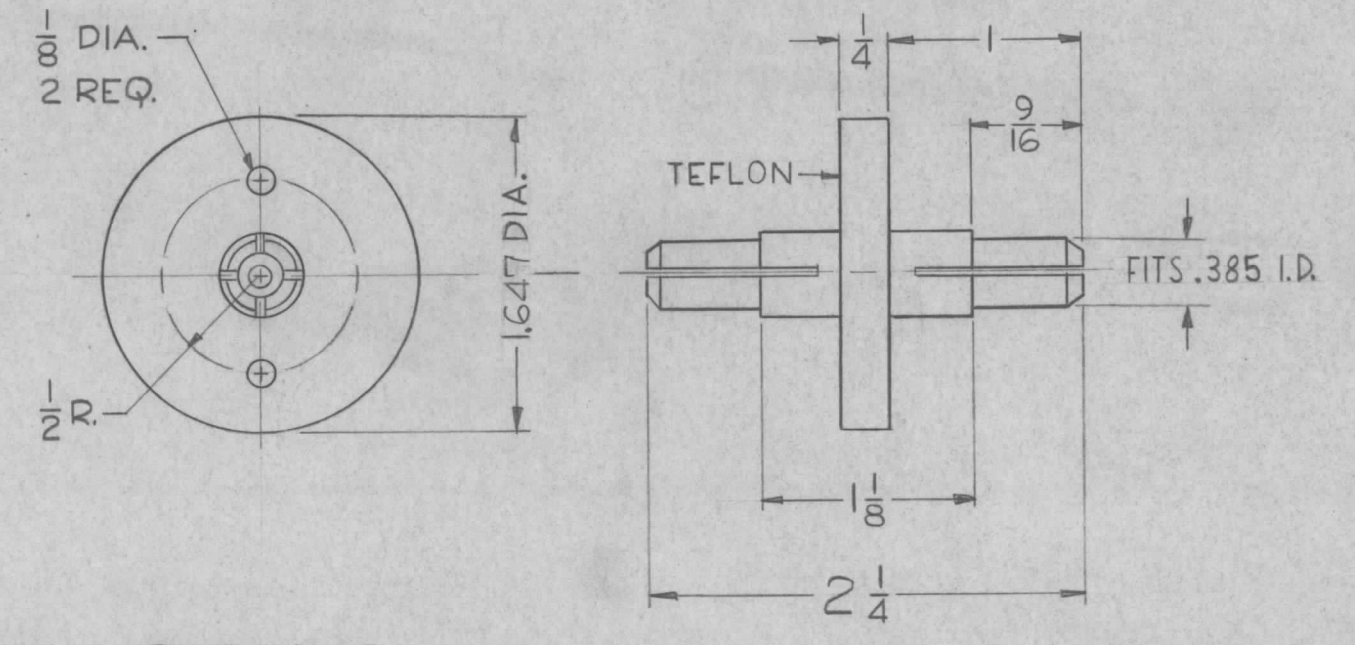
PO-218 C

THE CONTENTS OF THIS DRAWING ARE THE EXCLUSIVE PROPERTY OF THE TECHNICAL MATERIEL CORP. ITS UNAUTHORIZED USE OR REPRODUCTION IN WHOLE OR IN PART IS STRICTLY FORBIDDEN.

TMC PART NO.	IMPEDANCE	MATERIAL	FINISH	MFR. PART NO.
PO-218-50	50 OHMS	BRASS	NICKEL PLATE	34660
PO-218-70	75 OHMS	BRASS	NICKEL PLATE	24254



PO-218-50



PO-218-70

SYM	DESCRIPTION	DATE	CH. NO.	DRAFTS	CHECKER	ENG. APP.
C	REVISED PO-218-50, CHG'D. MFG. PART NO. FR. 45069 TO 34660	7-26-66	16634	RME	JCB	JC
B	75 OHM WAS 70 OHM (CHART), FINISH WAS NICKEL PLATE	7-13-62	6912	JCB	JCB	
A	MFR NO. 24254 WAS 24259, +0, -1/32 ADDED TO 3/4" DIA. - 50	12-29-61	6101	L.H.	JCB	
	Redrawn & Revised 50 Ohm Connector Added					

UNLESS OTHERWISE SPECIFIED:
 DIMENSIONS ARE IN INCHES
 TOLERANCES ON FRACTIONS ± 1/64 DECIMALS ± .005 ANGLES ± 1/2°

SCALE: 5401-31

MAXIMUM ALLOWABLE TOLERANCES HAVE BEEN DETERMINED AND ANY DEVIATIONS WILL BE CAUSE FOR REJECTION. REMOVE ALL BURRS AND SHARP EDGES

REQ. PER UNIT	MODEL	SECTION	ASS'Y. NO.	DATE
	TRC-5000			12-29-61

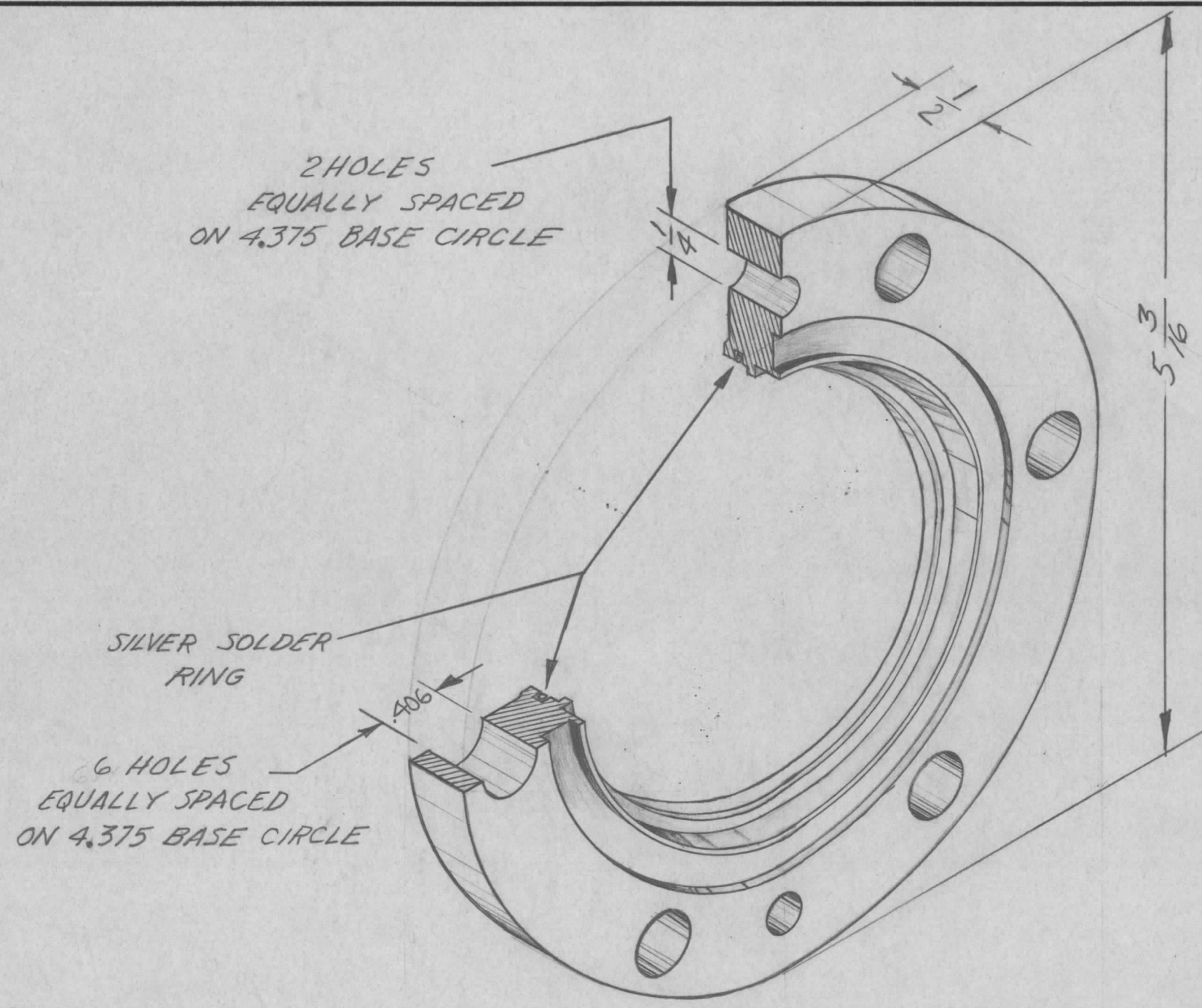
REQ. ITEM	PART NO.	DESCRIPTION	SYMBOL
		THE TECHNICAL MATERIEL CORP. MAMARONECK, NEW YORK	
		CONNECTOR, ELECTRICAL	
		1-5/8 INNER	
		L.H. JCB	SAFM
		DRAWN CHECKED	FINAL APPROVAL
		JCB JCB	PO-218 C
		ELEC. DES. APP. MECH. DES. APP.	

PO-223 A

NOTICE TO PERSONS RECEIVING THIS DRAWING

THE TECHNICAL MATERIEL CORPORATION claims proprietary right in the material disclosed hereon. This drawing is issued in confidence for engineering information only and may not be reproduced or used to manufacture anything shown hereon without permission from THE TECHNICAL MATERIEL CORPORATION to the user. This drawing is loaned for mutual assistance and is subject to recall at any time.

Property of:
THE TECHNICAL MATERIEL CORPORATION
MAMARONECK, NEW YORK



REF: ANDREW CORP. #15840

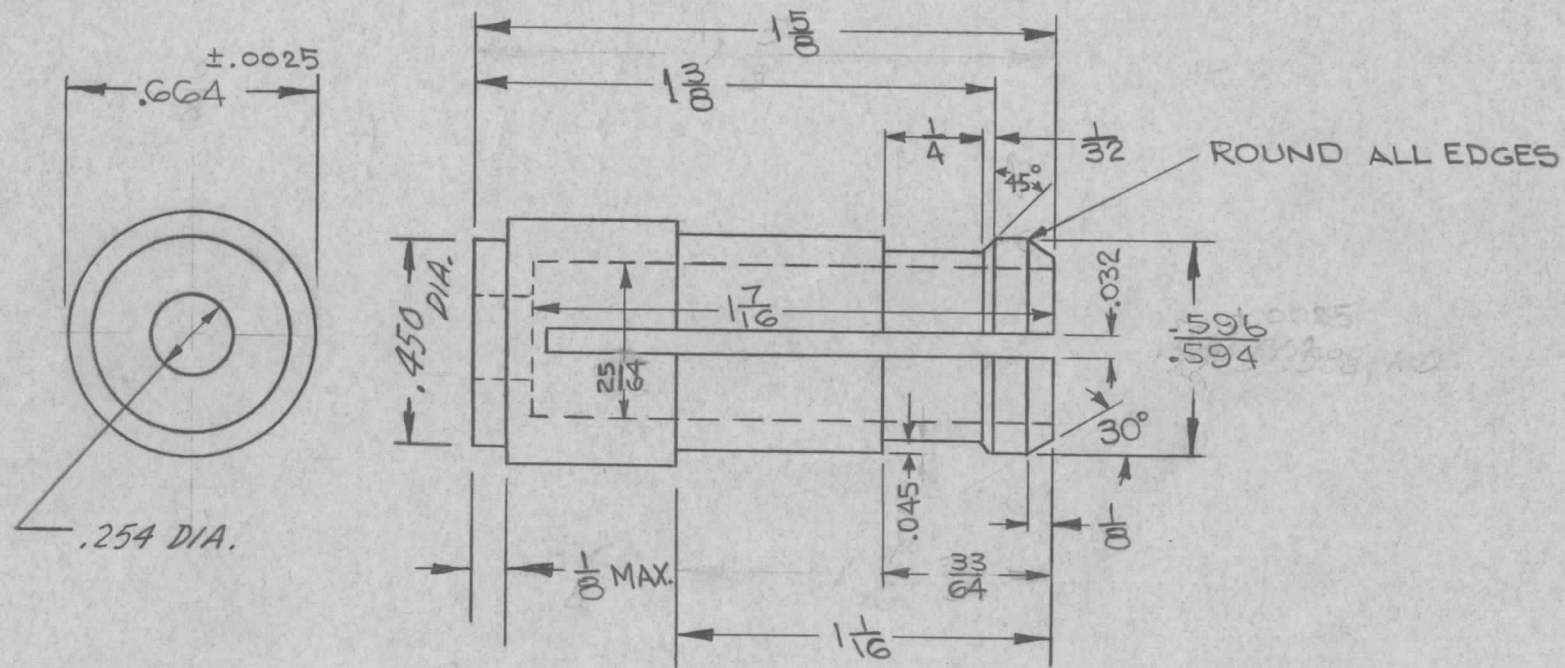
A	DIM 1/2 WAS 7/16	7-13-62	6912	of	gcb	
SYM	DESCRIPTION	DATE	CH. NO.	DRAFTS	CHECKER	ENG. APP.
UNLESS OTHERWISE SPECIFIED:		SCALE:				
DIMENSIONS ARE IN INCHES		MAXIMUM ALLOWABLE TOLERANCES HAVE BEEN DETERMINED AND ANY DEVIATIONS WILL BE CAUSE FOR REJECTION. REMOVE ALL BURRS AND SHARP EDGES				
TOLERANCES ON FRACTIONS ± 1/64 DECIMALS ± .005 ANGLES ± 1/2°						

1	AX-276			11-17-61
REQ. PER UNIT	MODEL	SECTION	ASS'Y. NO.	DATE
USED ON				

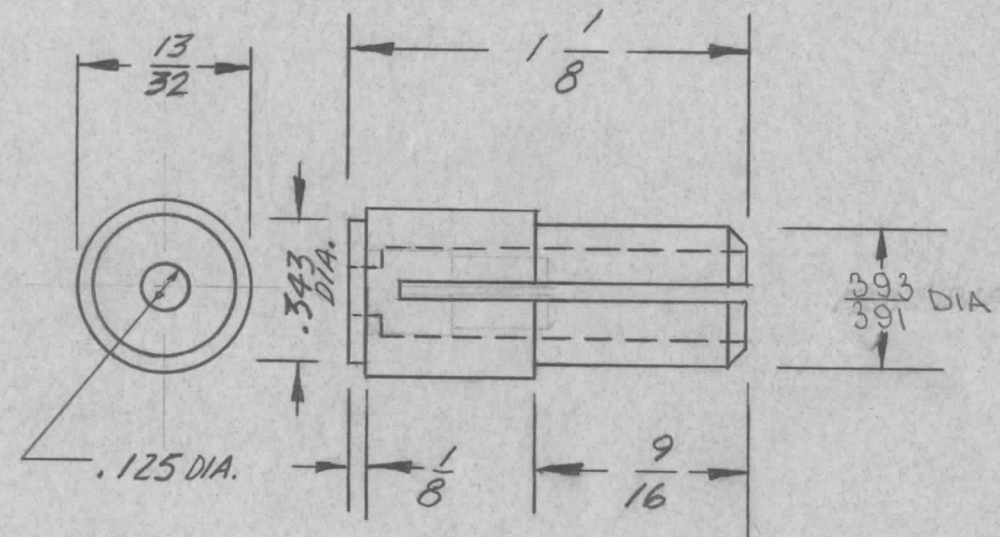
REQ. ITEM	PART NO.	DESCRIPTION			SYMBOL
		THE TECHNICAL MATERIEL CORP. MAMARONECK, NEW YORK			
STOCK SIZE		FLANGE, 3 1/8 E1A			
MATERIAL					
		wh	gcb	gcb	
TYPE & TEMPER	HEAT TREAT. SPEC.	DRAWN	CHECKER	FINAL APPROVAL	
		gcb	gcb	PO-223 A	
FINISH & SPEC. NO.		ELEC. DES. APP.	MECH. DES. APP.		

PO-224 B

THE CONTENTS OF THIS DRAWING ARE THE EXCLUSIVE PROPERTY OF THE TECHNICAL MATERIEL CORP. ITS UNAUTHORIZED USE OR REPRODUCTION IN WHOLE OR IN PART IS STRICTLY FORBIDDEN.



PO-224-50



PO-224-70

NOTES:

1. ALL DIAMETERS TO BE CONCENTRIC WITHIN .005.
2. ALL OUTER SURFACES MUST BE FREE OF DETRIMENTAL HOLES, BURRS, & CHATTER MARKS.
3. STUB MUST TAKE 20 TO 30 LBS PRESSURE TO SLIDE TUBE ON ONE END WITH THE OTHER OTHER END FULLY ENGAGED IN THE SAME SIZE TUBE

MATERIAL : BERYLLIUM COPPER
 HEAT TREAT : 600° F. FOR 3 HOURS, AFTER MACHINING
 FINISH : NICKEL PLATE

B	.596-.594 WAS .588, .393, .391 WAS .385, NOTE 3, W/ED	5.9.66	16223	W/ED		
A	MATL WAS BRASS MACHINING NOTES & HEAT TREAT ADDED DIMS CLARIFIED ON PO-224-50	5.16.63	9073			
SYM	DESCRIPTION	DATE	CH. NO.	DRAFTS	CHECKER	ENG. APP.

UNLESS OTHERWISE SPECIFIED:
 DIMENSIONS ARE IN INCHES
 TOLERANCES ON FRACTIONS ± 1/64 DECIMALS ± .005 ANGLES ± 1/2°

SCALE:
 MAXIMUM ALLOWABLE TOLERANCES HAVE BEEN DETERMINED AND ANY DEVIATIONS WILL BE CAUSE FOR REJECTION. REMOVE ALL BURRS AND SHARP EDGES

1	KIT-113			12-13-61
REQ. PER UNIT	MODEL	SECTION	ASS'Y. NO.	DATE

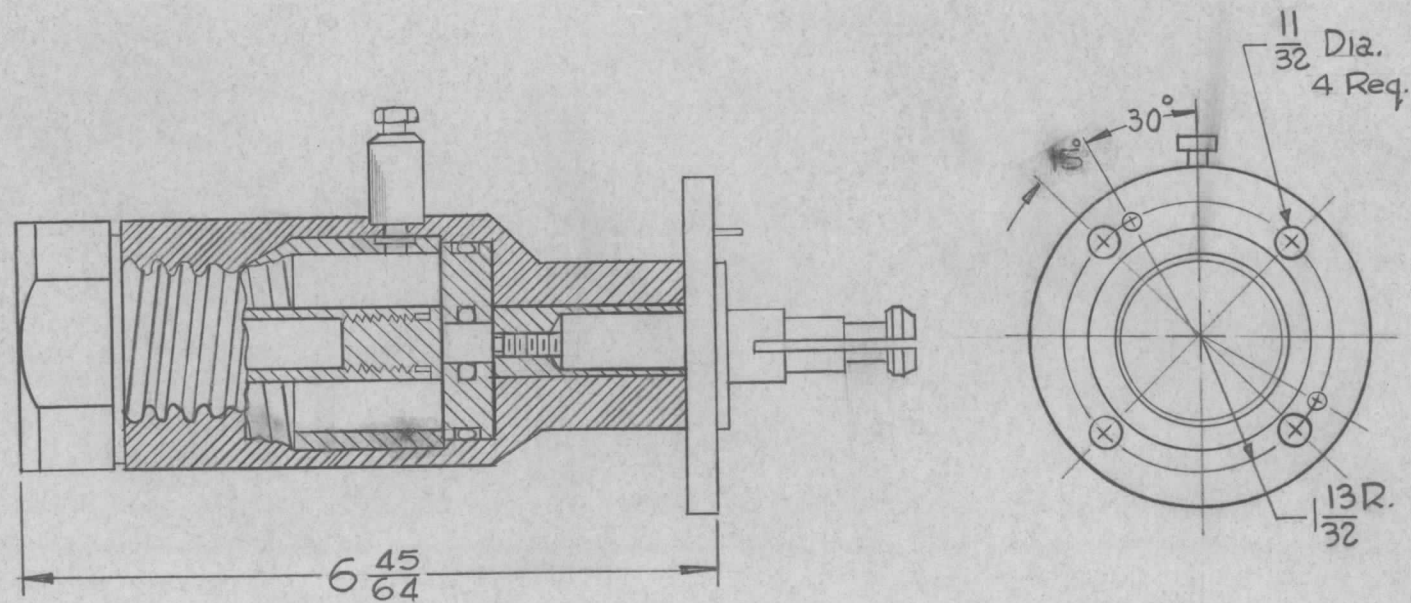
REQ.	ITEM	PART NO.	DESCRIPTION	SYMBOL
	x		THE TECHNICAL MATERIEL CORP. MAMARONECK, NEW YORK	
			INNER CONNECTOR STUB, ~ 1 5/8" ~	
	x			
	x	x	WH HO	SDM
			TYPE & TEMPER HEAT TREAT. SPEC. DRAWN CHECKED	FINAL APPROVAL
			FINISH & SPEC. NO.	ELEC. DES. APP. MECH. DES. APP.
			PO-224	B

PO-226

THE CONTENTS OF THIS DRAWING ARE THE EXCLUSIVE PROPERTY OF THE TECHNICAL MATERIEL CORP. ITS UNAUTHORIZED USE OR REPRODUCTION IN WHOLE OR IN PART IS STRICTLY FORBIDDEN.

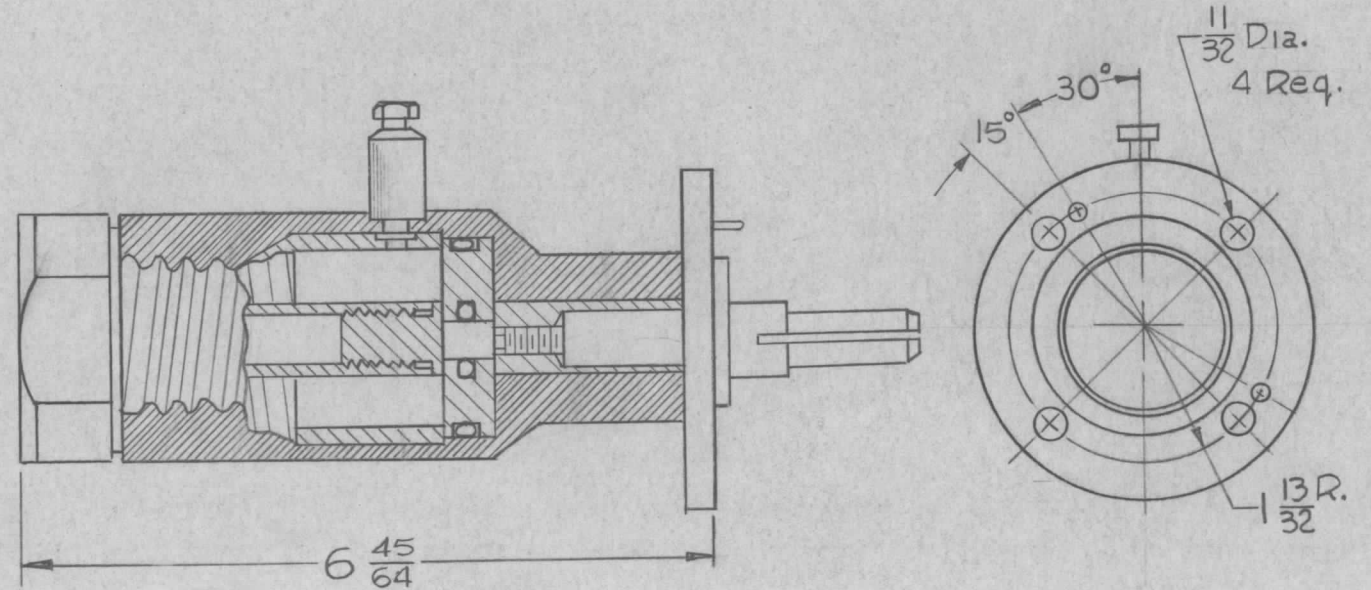
TMC PART NO.	IMPEDANCE	MFR. PART NO.
PO-226-50	50 OHMS	77G
PO-226-70	70 OHMS	

SUPPLIED BY MFR.
 O-RING - 1 Req
 SCREW, MACHINE - SCHH3118NR24 - 4 Req
 WASHER, LOCK, SPLIT - LWS31HRN - 4 Req
 NUT, HEX - NTH3118NR16 - 4 Req
 CONNECTOR, INNER - PO-218-50 - 1 Req



PO-226-50

SUPPLIED BY MFR.
 O-RING - 1 Req
 SCREW, MACHINE - SCHH3118NR24 - 4 Req
 WASHER, LOCK, SPLIT - LWS31HRN - 4 Req
 NUT, HEX - NTH3118NR16 - 4 Req
 CONNECTOR, INNER - PO-218-70 - 1 Req



PO-226-70

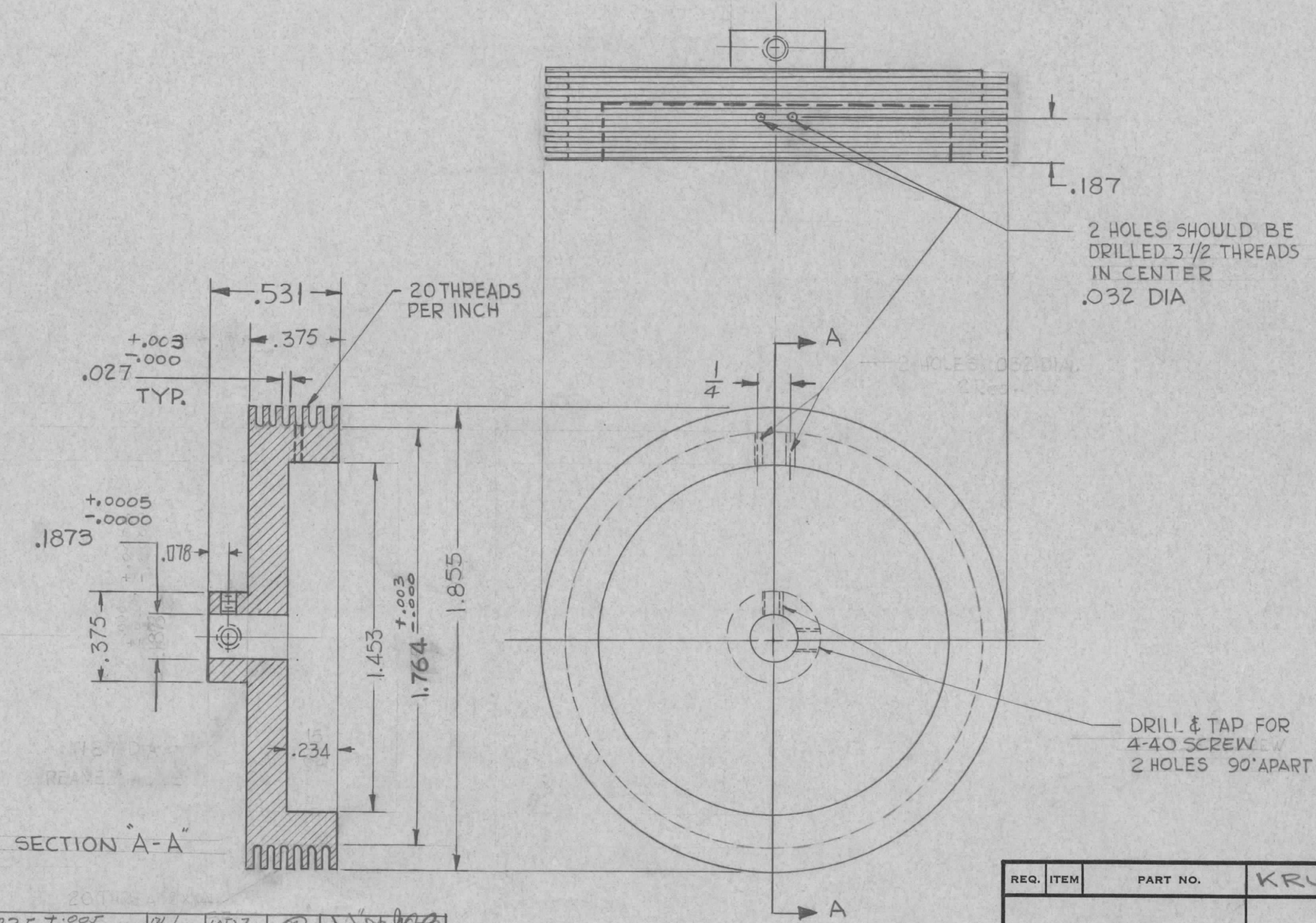
REQ.	ITEM	PART NO.	DESCRIPTION	SYMBOL
			THE TECHNICAL MATERIEL CORP. MAMARONECK, NEW YORK	
STOCK SIZE			CONNECTOR, ELECTRICAL, END	
MATERIAL			1 5/8 GAS BARRIER, CAPTIVE	
		EG	Wde	STM
TYPE & TEMPER		HEAT TREAT. SPEC.	DRAWN	CHECKED
			POB	STM
FINISH & SPEC. NO.		ELEC. DES. APP.	MECH. DES. APP.	PO-226

SYM	DESCRIPTION	DATE	CH. NO.	DRAFTS	CHECKER	ENG. APP.
	UNLESS OTHERWISE SPECIFIED:	SCALE: 5401-31				
	DIMENSIONS ARE IN INCHES	MAXIMUM ALLOWABLE TOLERANCES HAVE BEEN DETERMINED AND ANY DEVIATIONS WILL BE CAUSE FOR REJECTION.				
	TOLERANCES ON FRACTIONS ± 1/64	REMOVE ALL BURRS AND SHARP EDGES				
	DECIMALS ± .005					
	ANGLES ± 1/2°					

REQ. PER UNIT	MODEL	SECTION	ASS'Y. NO.	DATE
	TRC-5000			2-7-62
USED ON				

PO-238

THE CONTENTS OF THIS DRAWING ARE THE EXCLUSIVE PROPERTY OF THE TECHNICAL MATERIEL CORP. ITS UNAUTHORIZED USE OR REPRODUCTION IN WHOLE OR IN PART IS STRICTLY FORBIDDEN.



SECTION "A-A"

C	.027 ^{+0.003} / _{-0.000} WAS .025 ^{+0.005} / _{-0.000}	11/12	10527			
B	4-40 TAPPED HOLES WERE G-32	3-22-63	9062			
A	ON DIM. 1.764 TOLERANCE ADDED G-32 TAPPED HOLES WERE 4-40 TAP.	12-7-62	7834			

SYM	DESCRIPTION	DATE	CH. NO.	DRAFTS	CHECKER	ENG. APP.
UNLESS OTHERWISE SPECIFIED:		SCALE: DO NOT SCALE				
DIMENSIONS ARE IN INCHES		MAXIMUM ALLOWABLE TOLERANCES HAVE BEEN DETERMINED AND ANY DEVIATIONS WILL BE CAUSE FOR REJECTION.				
TOLERANCES ON FRACTIONS ± 1/64 DECIMALS ± .005 ANGLES ± 1/2°		REMOVE ALL BURRS AND SHARP EDGES				

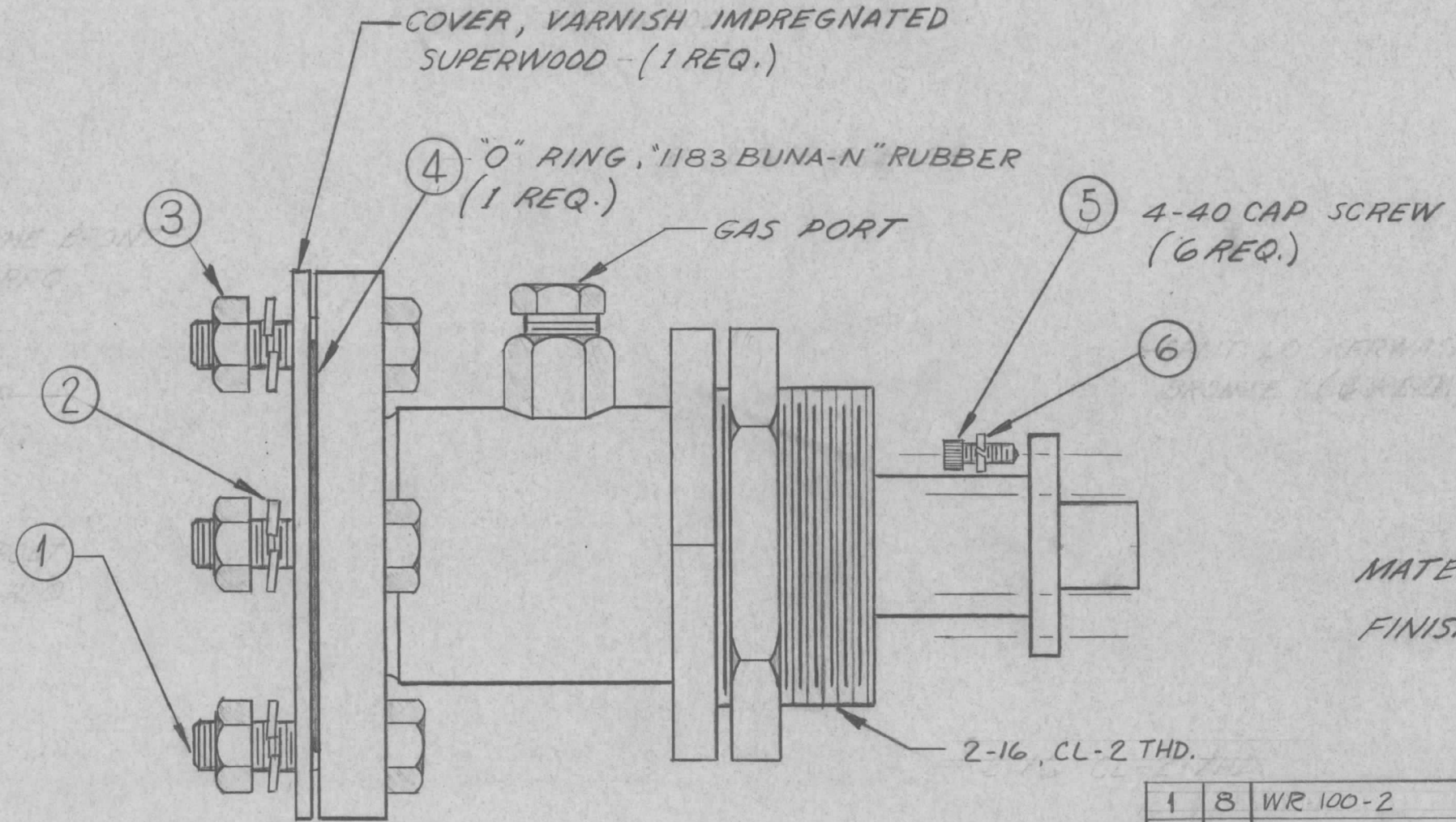
1	HR-1				7-26-62
REQ. PER UNIT	MODEL	SECTION	ASS'Y. NO.	DATE	
USED ON					

REQ. ITEM	PART NO.	DESCRIPTION	SYMBOL
	KRUY	THE TECHNICAL MATERIEL CORP. MAMARONECK, NEW YORK	
		STOCK SIZE	
		ALUMINUM	PULLEY, W/HUB
		MATERIAL	
	2024-T3	G.D.L. <i>[Signature]</i>	<i>[Signature]</i>
	TYPE & TEMPER	HEAT TREAT. SPEC.	DRAWN CHECKED FINAL APPROVAL
	5404 YEL. IRIDITE		TAK
	FINISH & SPEC. NO.	ELEC. DES. APP.	MECH. DES. APP.
			PO-238
			C

C
PO 249

THE CONTENTS OF THIS DRAWING ARE THE EXCLUSIVE PROPERTY OF THE TECHNICAL MATERIEL CORP. ITS UNAUTHORIZED USE OR REPRODUCTION IN WHOLE OR IN PART IS STRICTLY FORBIDDEN.

TMC PART NO.	OHMS	MFG NO.
PO 249-50	50-Ω	
PO 249-70	70-Ω	



MATERIAL - BRASS
FINISH - BRASS PLATE

NOTES:
 1.- ALL LOOSE EQUIPMENT SUPPLIED BY MANUFACTURER IN CLOTH BAG OR ASSEMBLED TO UNIT.
 2.- 2 1/8" DIA. HOLE REQUIRED FOR MOUNTING.
 3.- ONE (1) 1-5/8" INNER CONNECTOR, SUPPLIED BY MFG.
 4.- ONE (1) #4 WRENCH HEX.

1	8	WR 100-2	KEY, SOC. HD SCR (LOOSE ITEM)
1	7	PO 218-50-70	IN. COND., RFX (LOOSE ITEM)
6	6	LWS04HRN	WASH., LK, SPLIT TYPE
6	5	SC/55-0440S06	SCR, CAP, SOC. HD. AND...
1	4	GA15B-2	PKG, PREFORMED, O...
4	3	NTH3118NR16	NUT, PLN, HEX
4	2	LWS31HRN	WASH., LK, SPLIT TYPE
4	1	SCHH3118NR24	BOLT, MACH 5/16 x 1 1/2

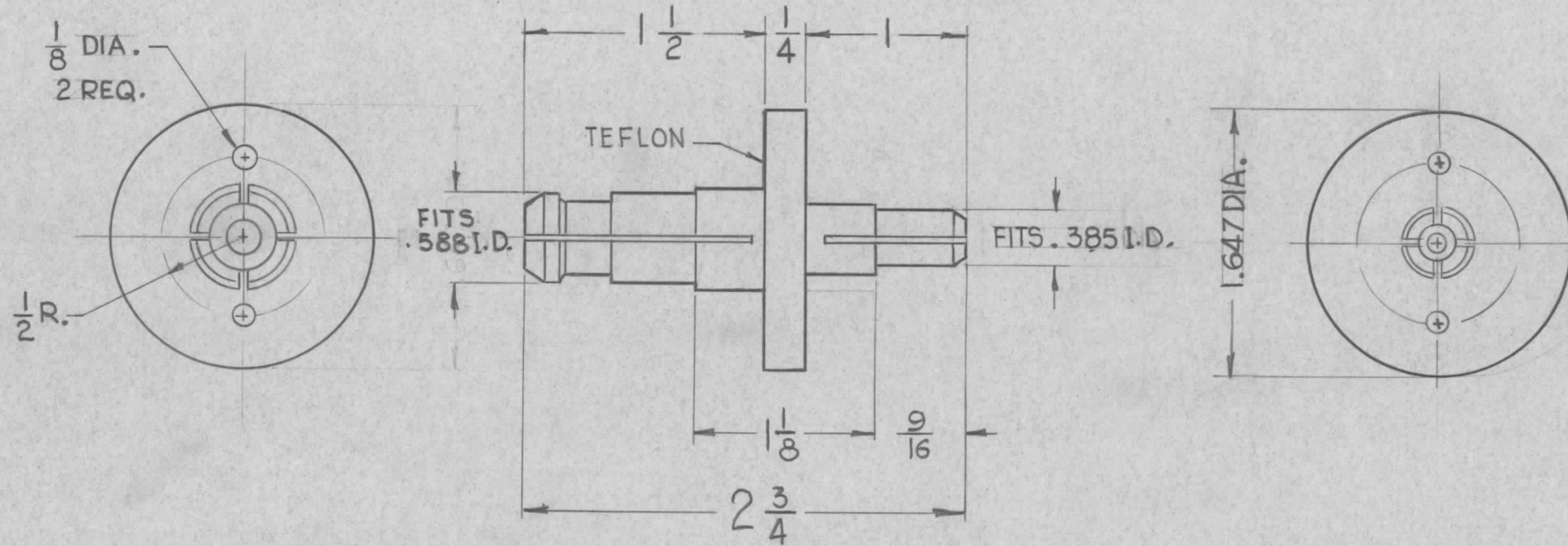
C	ADD 11, 445 PT NOS; REV. DESCR. ALL ITEMS	7-3-67	18351	REQ	WJB	WJB
B	PART NO. WAS EIA-516Z5, ITEMS ADDED	10-15-62	7445			
A	70-Ω ADDED TO TITLE, TMC PART NO. CHART ADDED	7-13-62	6912			
A	1183 BUNA-N RUBBER WAS SILICON RUBBER					

SYM	DESCRIPTION	DATE	CH. NO.	DRAFTS	CHECKER	ENG. APP.
UNLESS OTHERWISE SPECIFIED:						
DIMENSIONS ARE IN INCHES		SCALE: 5401-31-26148				
TOLERANCES ON FRACTIONS ± 1/64 DECIMALS ± .005 ANGLES ± 1/2°		MAXIMUM ALLOWABLE TOLERANCES HAVE BEEN DETERMINED AND ANY DEVIATIONS WILL BE CAUSE FOR REJECTION. REMOVE ALL BURRS AND SHARP EDGES				
A		TCA				
REQ. PER UNIT	MODEL	SECTION	ASS'Y. NO.	DATE		
				12-15-61		
USED ON						

REQ.	ITEM	PART NO.	DESCRIPTION	SYMBOL
			THE TECHNICAL MATERIEL CORP. MAMARONECK, NEW YORK	
			CONNECTOR, RECEPTACLE, ELECTRICAL FEED-THRU 1 5/8 EIA 50Ω OR 70Ω	
			WA	RJZZO
			EFM	
			TYPE & TEMPER	HEAT TREAT. SPEC.
			DRAWN	CHECKED
			FINAL APPROVAL	
			FINISH & SPEC. NO.	ELEC. DES. APP.
			MECH. DES. APP.	
			PO 249 C	

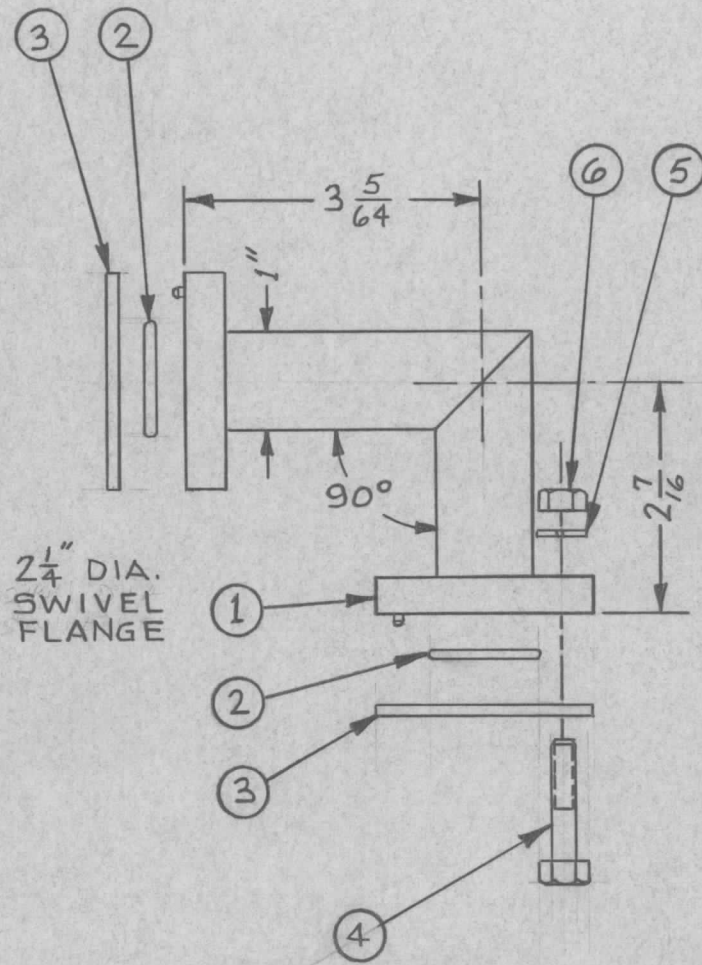
THE CONTENTS OF THIS DRAWING ARE THE EXCLUSIVE PROPERTY OF THE TECHNICAL MATERIEL CORP. ITS UNAUTHORIZED USE OR REPRODUCTION IN WHOLE OR IN PART IS STRICTLY FORBIDDEN.

PO-250



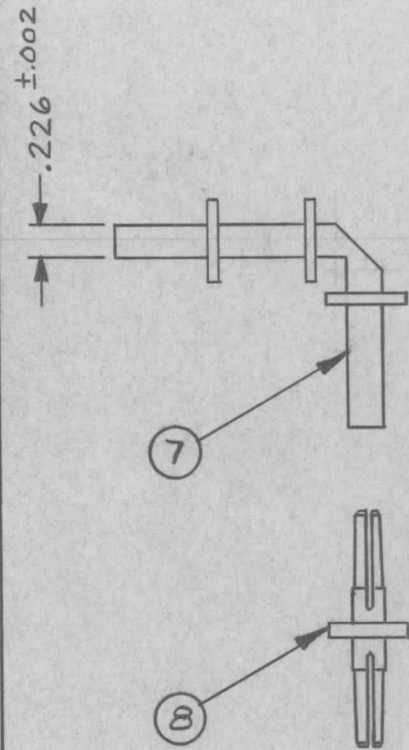
REQ. ITEM	PART NO.	DESCRIPTION	SYMBOL
MARTINENGO		THE TECHNICAL MATERIEL CORP. MAMARONECK, NEW YORK	
STOCK SIZE		CONNECTOR, ELECTRICAL, INNER	
MATERIAL		1 5/8" EIA - 50 TO 70 -2	
TYPE & TEMPER		G.D.L. mgt. 10/2/62	JMA
HEAT TREAT. SPEC.		DRAWN	CHECKED
FINISH & SPEC. NO.		FINAL APPROVAL	
ELEC. DES. APP.		MECH. DES. APP.	
		PO-250	

SYM	DESCRIPTION	DATE	CH. NO.	DRAFTS	CHECKER	ENG. APP.
UNLESS OTHERWISE SPECIFIED:		SCALE: S401-31 (25572)				
DIMENSIONS ARE IN INCHES		MAXIMUM ALLOWABLE TOLERANCES HAVE BEEN DETERMINED AND ANY DEVIATIONS WILL BE CAUSE FOR REJECTION.				
TOLERANCES ON FRACTIONS ± 1/64 DECIMALS ± .005 ANGLES ± 1/2°		REMOVE ALL BURRS AND SHARP EDGES				
REQ. PER UNIT	MODEL	SECTION	ASS'Y. NO.	DATE	USED ON	

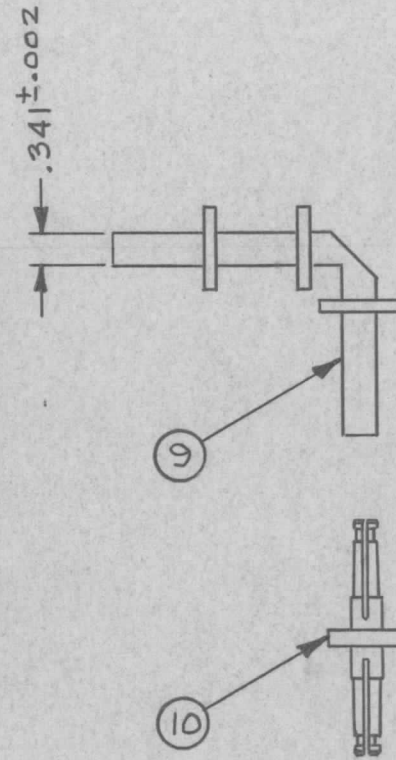


2 1/4" DIA.
SWIVEL
FLANGE

SEE NOTE 1 AND 2



SEE NOTE 1



SEE NOTE 2

PO-253

REVISIONS

SYM	DESCRIPTION	DATE	E.M.N. NO.	DRAFT	CHKD	APPD
-----	-------------	------	------------	-------	------	------

REQ'D.	ITEM	PART NUMBER	DESCRIPTION	SYMBOL
1	10		INNER CONNECTOR, 50 Ω	
1	9		INNER CONDUCTOR, RIGHT ANGLE 50Ω	
1	8		INNER CONNECTOR, 70 Ω	
1	7		INNER CONDUCTOR, RIGHT ANGLE 70Ω	
6	6		NUTS, HEX	
6	5		LOCKWASHERS	
6	4		BOLTS, HEX HD 1/4"-20 x 1 1/4"	
2	3		DUST COVER, PRESSBOARD	
2	2		"O" RINGS	
1	1		RIGHT ANGLE BODY W/SWIVEL FLANGES	

ABOVE ITEMS SUPPLIED BY MANUFACTURER

NOTES:

- 1 - ITEM 1 THRU ITEM 8 SUPPLIED FOR PO-253-50
- 2 - FOR PO-253-70.
- 2 - ITEM 1 THRU ITEM 6, ITEM 9 AND 10 FOR
- 2 - ITEM 1 THRU ITEM 6 AND ITEMS 9 & 10 SUPPLIED FOR PO-253-50

REQ'D.	ITEM	PART NUMBER	DESCRIPTION	SYMBOL
--------	------	-------------	-------------	--------

MARTINENGO LIST OF MATERIAL THE TECHNICAL MATERIEL CORP. MAMARONECK, NEW YORK

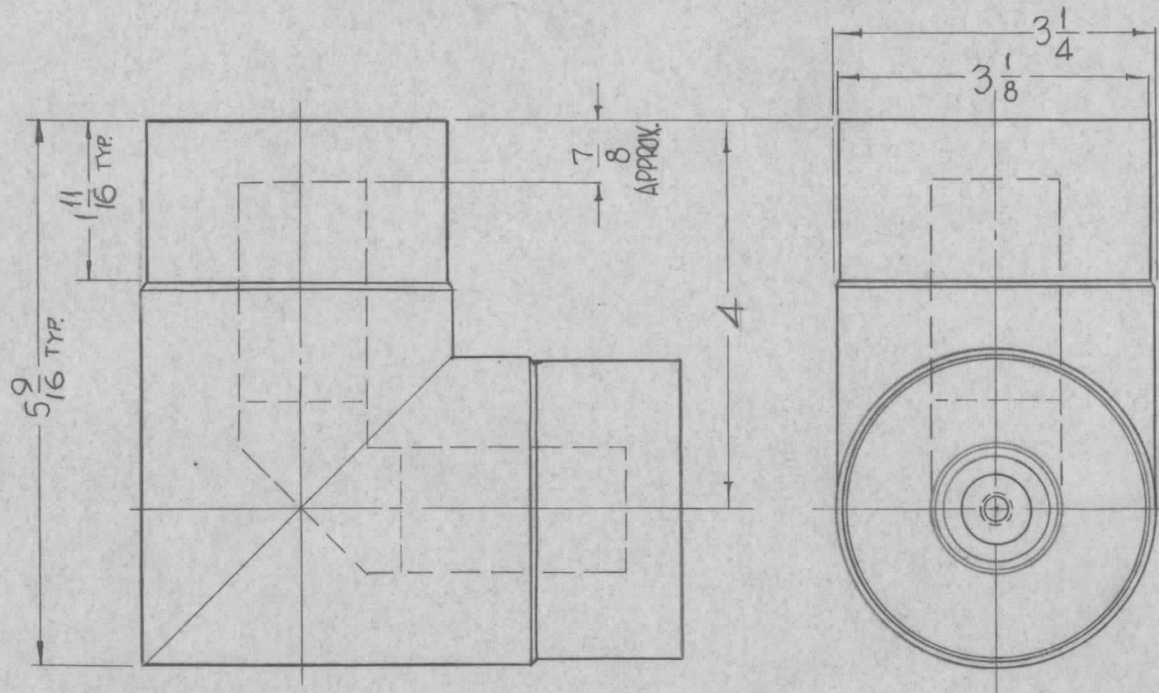
FINISH TITLE RIGHT ANGLE 50 OR 70 OHMS 7/8 EIA FLANGE

UNLESS OTHERWISE SPECIFIED DIMENSIONS ARE IN INCHES AND INCLUDE CHEMICALLY APPLIED OR PLATED FINISHES		DRAWN M TANTILLO	DATE 2-13-63	FINAL APPROVAL <i>AM</i>	DATE 2/14/63
DECIMALS .X ± .05 .XX ± .01 .XXX ± .005	TOLERANCES	ELECT. DES.	DATE	MECH. DES. <i>AM</i>	DATE 2/14/63
		PO-253		SHEET	
				REV. LTR.	

NOTES

THE CONTENTS OF THIS DRAWING ARE THE EXCLUSIVE PROPERTY OF THE TECHNICAL MATERIEL CORP. ITS UNAUTHORIZED USE OR REPRODUCTION IN WHOLE OR IN PART IS STRICTLY FORBIDDEN.

	Po-253-50	
	Po-253-70	
Q'TY./UNIT	MODEL USED ON	ASS'Y. NO.
SCALE	CODE	S401-31-1070-70 Ω
		S401-31-1060-50 Ω



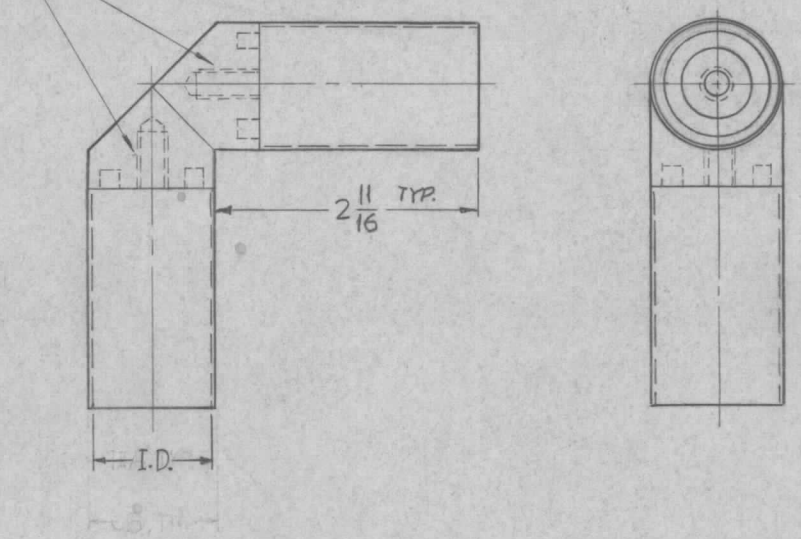
PO-254 0

REVISIONS

SYM	DESCRIPTION	DATE	E.M.N. NO.	DRAFT	CHKD	APPD
0	ORIGINAL RELEASE FOR PRODUCTION	7.17.64		MB		

TMC NO.	IMPEDANCE	I.D.
PO-254-50	50	1.231
PO-254-70	70	.805

5/16-18 x 5/8 DEEP. THRDS.



REQ'D.	ITEM	PART NUMBER	DESCRIPTION	SYMBOL
--------	------	-------------	-------------	--------

F. BUDETTI LIST OF MATERIAL

MATERIAL THE TECHNICAL MATERIEL CORP.
MAMARONECK, NEW YORK

FINISH TITLE
ELBOW R.F. TRANSMISSION LINE
3-1/8 UNFLANGED

UNLESS OTHERWISE SPECIFIED
DIMENSIONS ARE IN INCHES AND INCLUDE
CHEMICALLY APPLIED OR PLATED FINISHES

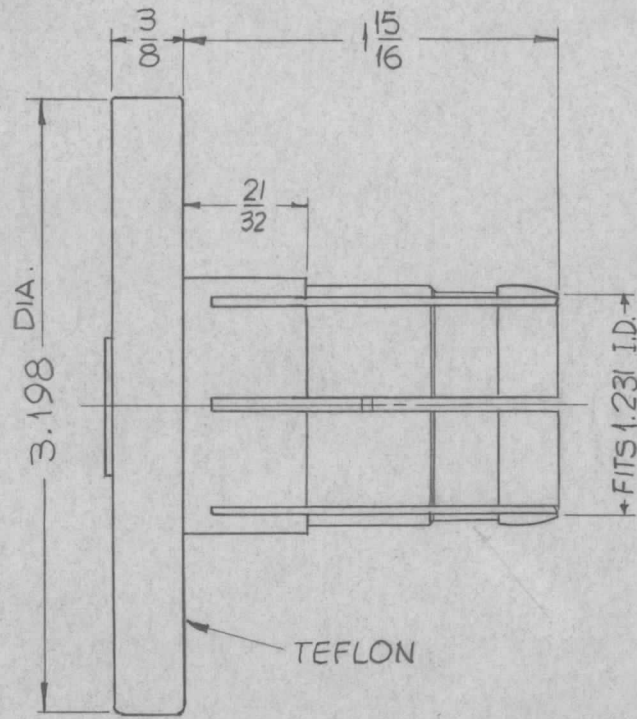
DRAWN SRG	DATE 5-26-63	FINAL APPROVAL	DATE
CHECKED	DATE		

DECIMALS .X ± .05 .XX ± .01 .XXX ± .005	TOLERANCES	FRACTIONS ± 1/64 ANGLES ± 0° 30'	ELECT. DES. [Signature]	DATE 5/17/63	PO-254	0
			MECH. DES. [Signature]	DATE	SHEET	REV. LTR.

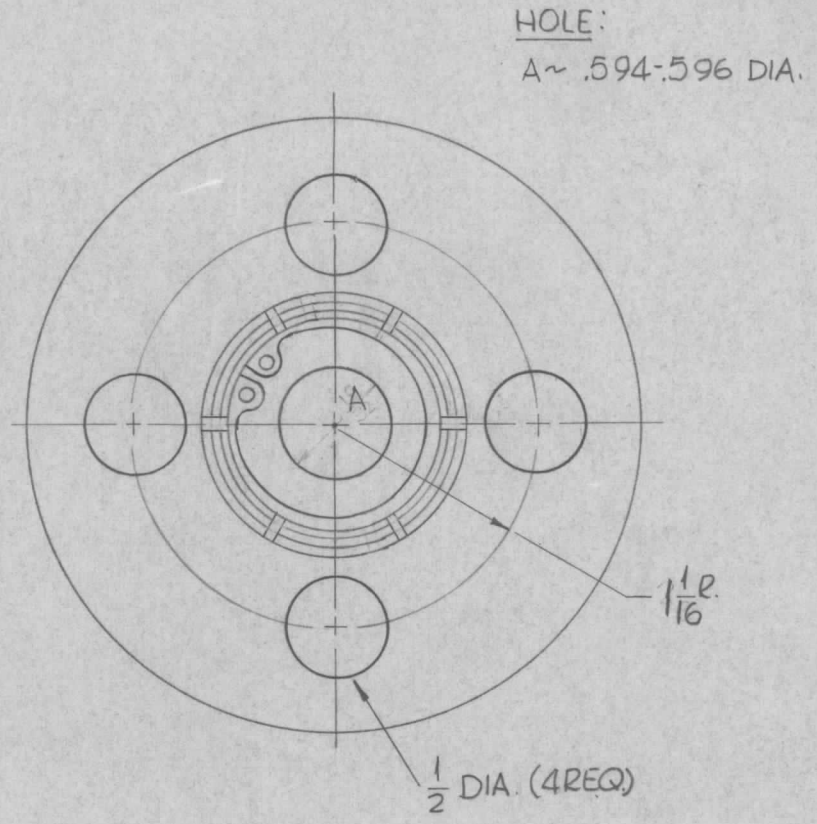
	GPT-200K	AX-392
Q'TY./UNIT	MODEL USED ON	ASS'Y. NO.
SCALE	CODE	S401-31

NOTES

THE CONTENTS OF THIS DRAWING ARE THE EXCLUSIVE PROPERTY OF THE TECHNICAL MATERIEL CORP. ITS UNAUTHORIZED USE OR REPRODUCTION IN WHOLE OR IN PART IS STRICTLY FORBIDDEN.



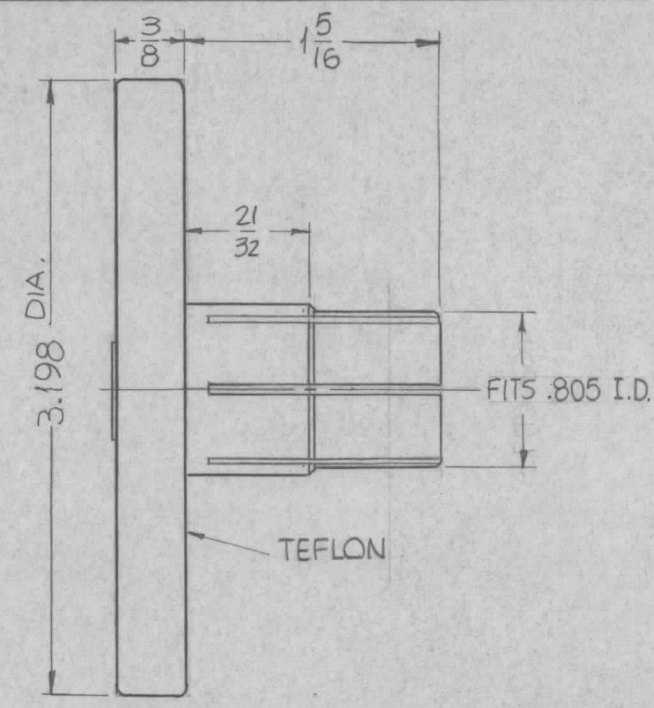
PO-258-50



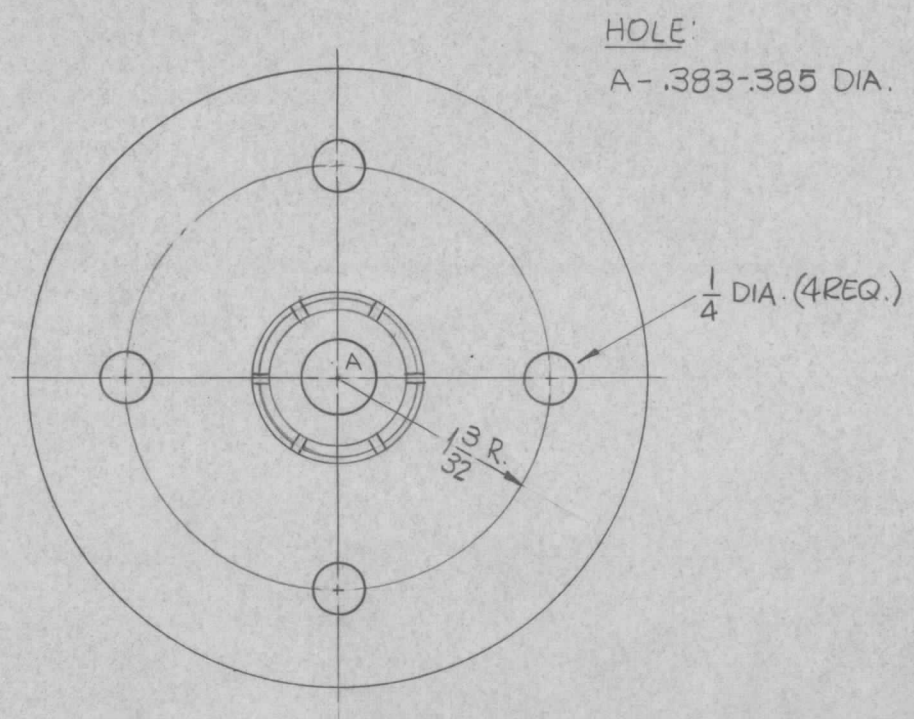
HOLE:
A ~ .594-.596 DIA.

PO-258

REVISIONS						
SYM	DESCRIPTION	DATE	E.M.N. NO.	DRAFT	CHKD	APPD
0	ORIGINAL RELEASE FOR PRODUCTION	5/21/64	0	A.M.		



PO-258-70



HOLE:
A - .383-.385 DIA.

REQ'D.	ITEM	PART NUMBER	DESCRIPTION	SYMBOL
F. BUDETTI				
LIST OF MATERIAL				
MATERIAL			THE TECHNICAL MATERIEL CORP. MAMARONECK, NEW YORK	
FINISH			TITLE ADAPTOR, INNER CONNECTOR 1-5/8 TO 3-1/8	
UNLESS OTHERWISE SPECIFIED DIMENSIONS ARE IN INCHES AND INCLUDE CHEMICALLY APPLIED OR PLATED FINISHES		DRAWN <i>SRG</i>	DATE 5/24/63	FINAL APPROVAL <i>RAC</i>
		CHECKED <i>MC</i>	DATE	
		ELECT. DES. <i>JB</i>	DATE 5/19/64	PO-258
		MECH. DES. <i>aa</i>	DATE	0
				SHEET
				REV. LTR.

	GPT-200K	AX-392
Q'TY./UNIT	MODEL USED ON	ASS'Y. NO.
SCALE <i>#</i>	CODE <i>C</i>	<i>S401-31</i>

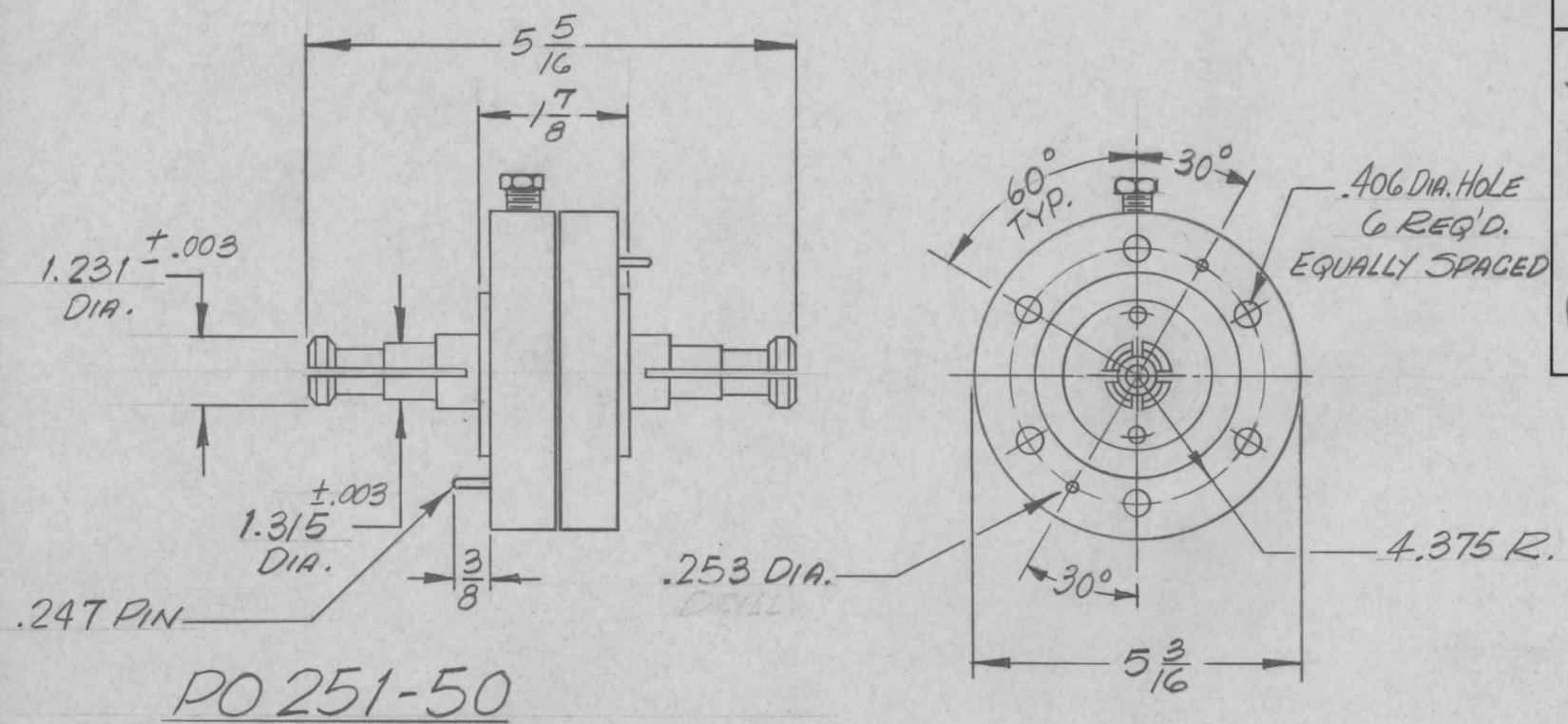
NOTES

THE CONTENTS OF THIS DRAWING ARE THE EXCLUSIVE PROPERTY OF THE TECHNICAL MATERIEL CORP. ITS UNAUTHORIZED USE OR REPRODUCTION IN WHOLE OR IN PART IS STRICTLY FORBIDDEN.

DECIMALS
.X ± .05
.XX ± .01
.XXX ± .005

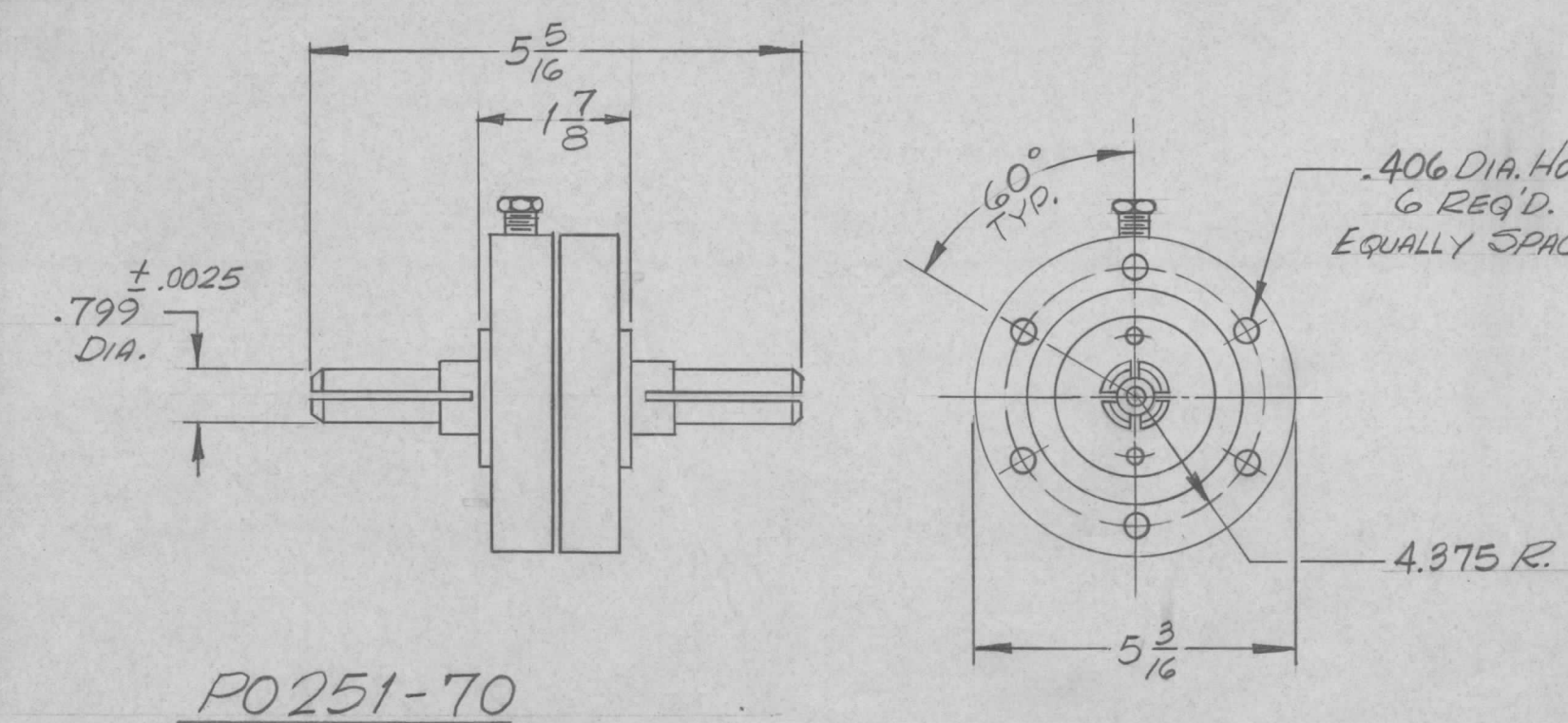
TOLERANCES

FRACTIONS
± 1/64
ANGLES
± 0° 30'



PO 251

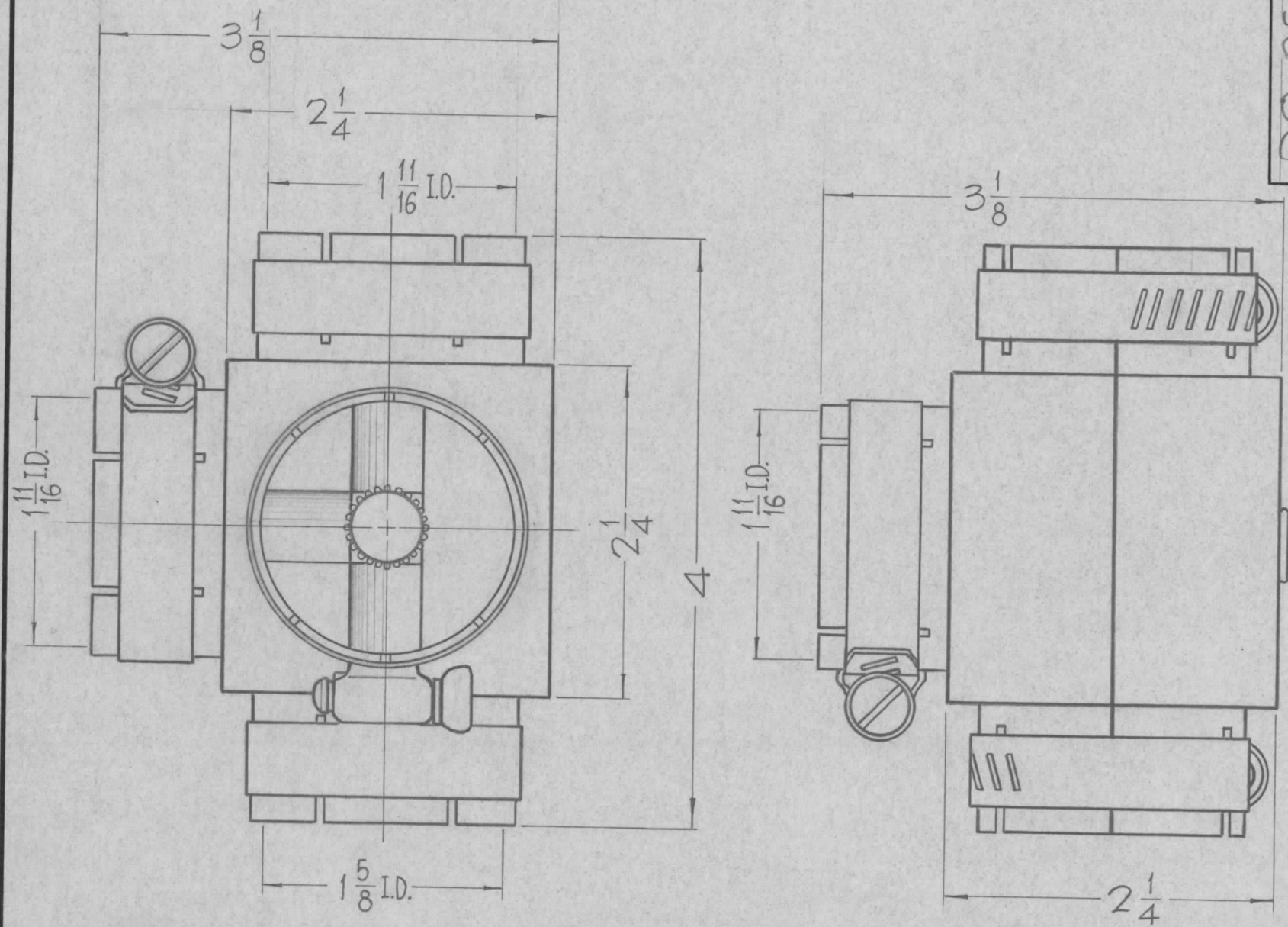
REVISIONS						
SYM	DESCRIPTION	DATE	E.M.N. NO.	DRAFT	CHKD	APPD
Ø	ORIGINAL RELEASE FOR PROD.	8/25/69	Ø	<i>hde</i>		<i>hde</i>



REQ'D.	ITEM	PART NUMBER	DESCRIPTION	SYMBOL
A. MARTINEGO LIST OF MATERIAL				
MATERIAL		THE TECHNICAL MATERIEL CORP. MAMARONECK, NEW YORK		
FINISH		TITLE CONNECTOR, ELECTRICAL GAS BARRIER 3/8, E1A		
UNLESS OTHERWISE SPECIFIED DIMENSIONS ARE IN INCHES AND INCLUDE CHEMICALLY APPLIED OR PLATED FINISHES		DRAWN <i>H. Austin</i>	DATE 3/25/66	FINAL APPROVAL <i>SPM</i>
DECIMALS .X ± .05 .XX ± .01 .XXX ± .005		CHECKED <i>hde</i>	DATE 8/22/69	DATE 8/25/69
FRACTIONS ± 1/64 ANGLES ± 0° 30'		ELECT. DES.	DATE	DATE
TOLERANCES		MECH. DES.	DATE	DATE
SHEET				REV. LTR.
PO 251				Ø

Q'TY./UNIT	MODEL USED ON	ASS'Y. NO.
SCALE	CODE C	5401-31-1262A
THE CONTENTS OF THIS DRAWING ARE THE EXCLUSIVE PROPERTY OF THE TECHNICAL MATERIEL CORP. ITS UNAUTHORIZED USE OR REPRODUCTION IN WHOLE OR IN PART IS STRICTLY FORBIDDEN.		

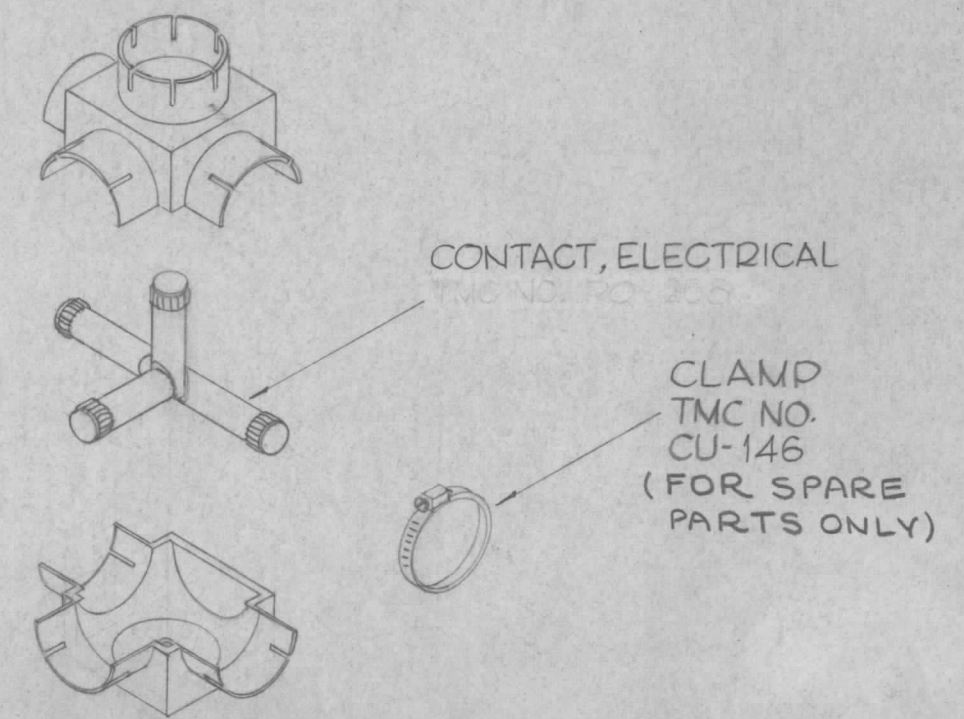
NOTES



A
PO-259

REVISIONS

SYM	DESCRIPTION	DATE	E.M.N. NO.	DRAFT	CHKD	APPD
0	ORIGINAL RELEASE FOR PRODUCTION	5-27-64	0	A.M.		
A	TMC P/N DELE. FROM CONTACT NOTE ON CLAMP NOTE "FOR SPARE PARTS ONLY" ADDED	8.14.64	11953	JB	NR	DB



REF. JENNINGS RC 5

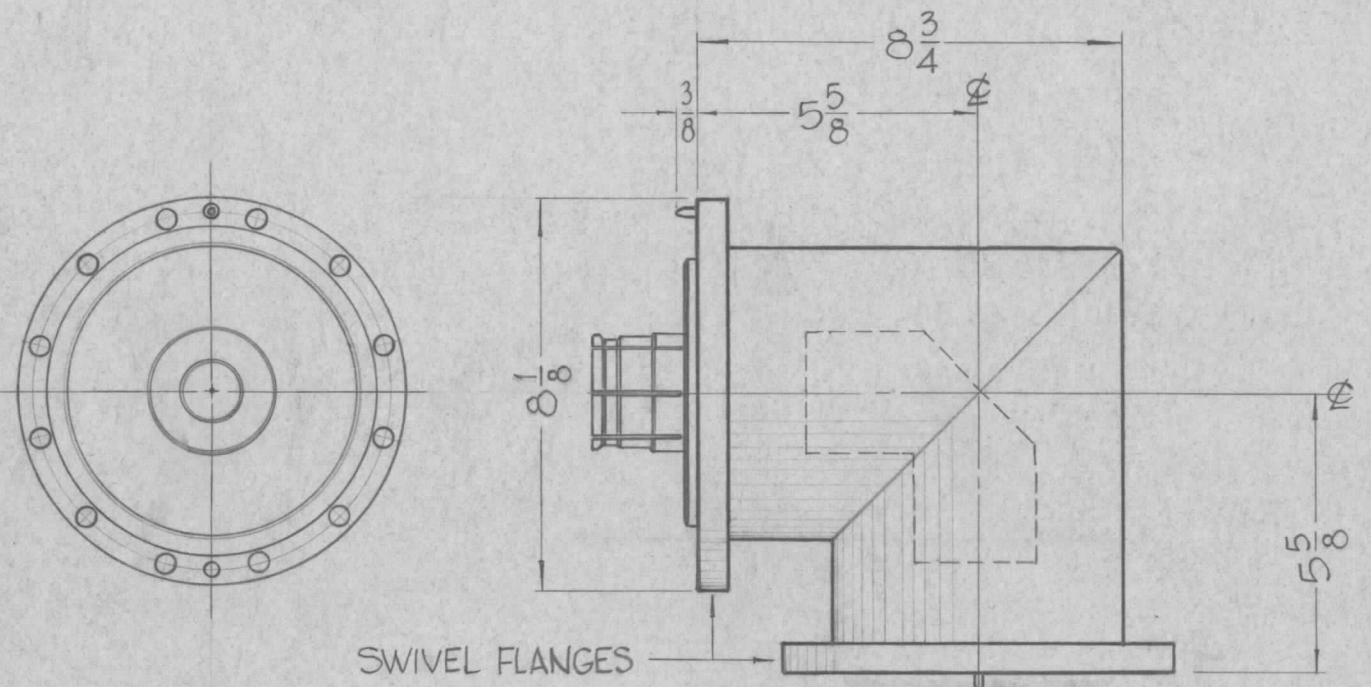
REQ'D.	ITEM	PART NUMBER	DESCRIPTION	SYMBOL
F. BUDETTI LIST OF MATERIAL				
MATERIAL			THE TECHNICAL MATERIEL CORP. MAMARONECK, NEW YORK	
FINISH			TITLE ELBOW, 4 WAY 1 5/8	
UNLESS OTHERWISE SPECIFIED DIMENSIONS ARE IN INCHES AND INCLUDE CHEMICALLY APPLIED OR PLATED FINISHES			DRAWN John C Biele CHECKED DB	DATE 1-4-63 DATE 5/21/64
DECIMALS .X ± .05 .XX ± .01 .XXX ± .005			TOLERANCES FRACTIONS ± 1/64 ANGLES ± 0° 30'	FINAL APPROVAL DATE PO-259 SHEET REV. LTR. A

NOTES

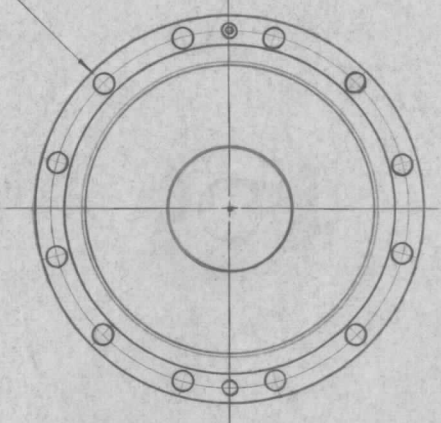
THE CONTENTS OF THIS DRAWING ARE THE EXCLUSIVE PROPERTY OF THE TECHNICAL MATERIEL CORP. ITS UNAUTHORIZED USE OR REPRODUCTION IN WHOLE OR IN PART IS STRICTLY FORBIDDEN.

Q'TY./UNIT	MODEL USED ON	ASS'Y. NO.
SCALE	CODE	S401-48

A
PO-263



(12) 13/32 DIA. HOLES
EQUALLY SPACED
30° APART ON A
7-3/8 DIA.
(BOTH FLANGES)



REVISIONS

SYM	DESCRIPTION	DATE	E.M.N. NO.	DRAFT	CHKD	APPD
0	ORIGINAL RELEASE FOR PRODUCTION	5-16-64		SRG		
A	ON HDW. NOTE, "O"-RING, TMC P/N (PO-256) DELE.	8.14.64	11953	WB	W	W

TMC PT. NO.	MFG. NO.	OHMS	VWSR (VOLTAGE STANDING WAVE RATIO)
PO-263-50	1073M	50	*LESS THAN 1.01 UP TO 450MC
PO-263-70	1063M	75	*LESS THAN 1.01 UP TO 450MC

* SPECIFY FREQUENCY USE FOR ABOVE 450 MC.

HARDWARE — SPADE PARTS

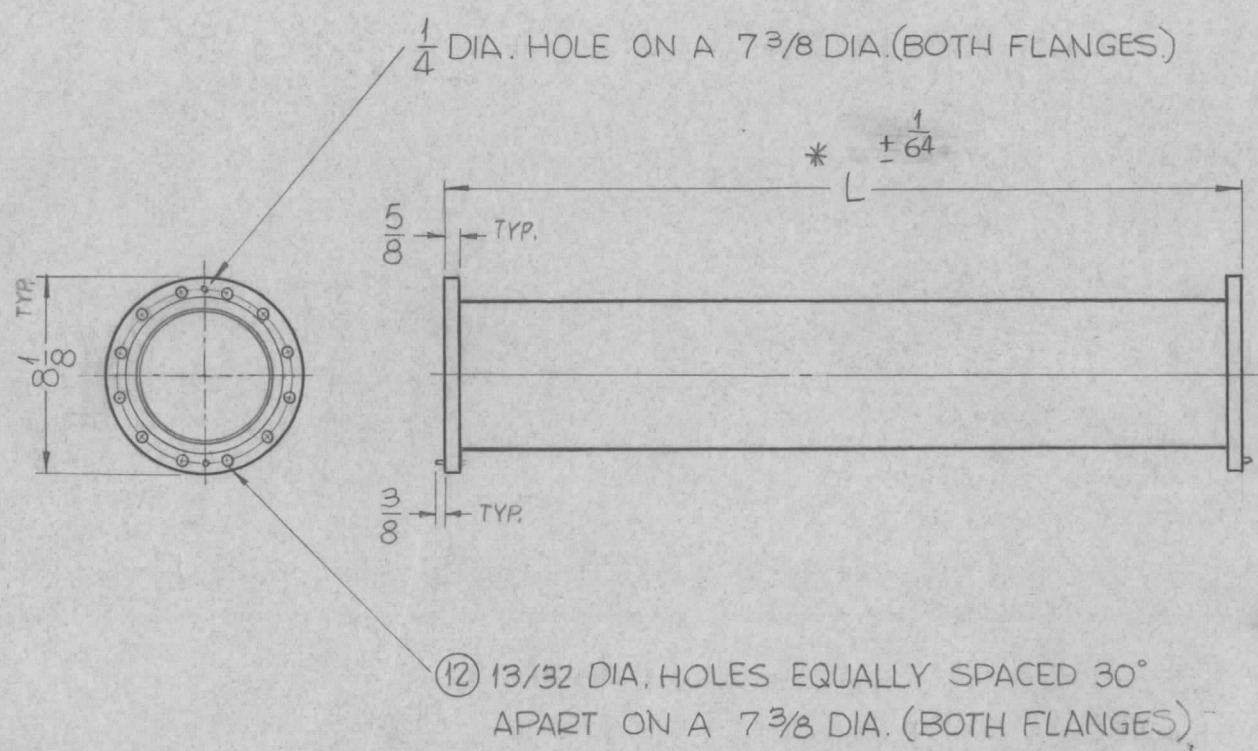
- "O" RING, TMC NO. PO-256
- INNER CONNECTOR, TMC NO. PO-255
- FINNED CONDUCTOR, TMC NO. PO-257
- 3/8 - 16 HEXAGON HEAD BOLTS, LOCK WASHERS AND NUTS.

REQ'D.	ITEM	PART NUMBER	DESCRIPTION	SYMBOL
F. BUDETTI LIST OF MATERIAL				
MATERIAL			THE TECHNICAL MATERIEL CORP. MAMARONECK, NEW YORK	
FINISH			TITLE ELBOW, TRANSMISSION LINE, 6-1/8	
UNLESS OTHERWISE SPECIFIED DIMENSIONS ARE IN INCHES AND INCLUDE CHEMICALLY APPLIED OR PLATED FINISHES			DRAWN John C. Biele	DATE 1-3-63
			CHECKED JCB	DATE 5/13/64
			ELECT. DES. WB	DATE 5/13/64
			MECH. DES. WB	DATE 5/13/64
DECIMALS .X ± .05 .XX ± .01 .XXX ± .005				FRACTIONS ± 1/64 ANGLES ± 0° 30'
TOLERANCES				PO-263
THE CONTENTS OF THIS DRAWING ARE THE EXCLUSIVE PROPERTY OF THE TECHNICAL MATERIEL CORP. ITS UNAUTHORIZED USE OR REPRODUCTION IN WHOLE OR IN PART IS STRICTLY FORBIDDEN.				A
NOTES				REV. LTR.

TMC PART NO.	MFG. PART NO.	IMPEDANCE
PO-265-50	2773	50Ω
PO-265-70		75Ω

PO-265 0

REVISIONS					
SYM	DESCRIPTION	DATE	E.M.N. NO.	DRAFT	CHKD
0	ORIGINAL RELEASE FOR PRODUCTION	5-27-64	0	A.M.	



PO-265-50-24.75
 TMC NO. IMPEDANCE LENGTH IN INCHES

MANUFACTURER TO SUPPLY THE FOLLOWING:

- ① O'RING GASKET (TMC NO. PO-255)
- ① INNER CONNECTOR (TMC NO. PO-255)
- ① INNER CONDUCTOR (TMC NO. PO-)

ELECTRIC SPECIFICATIONS:

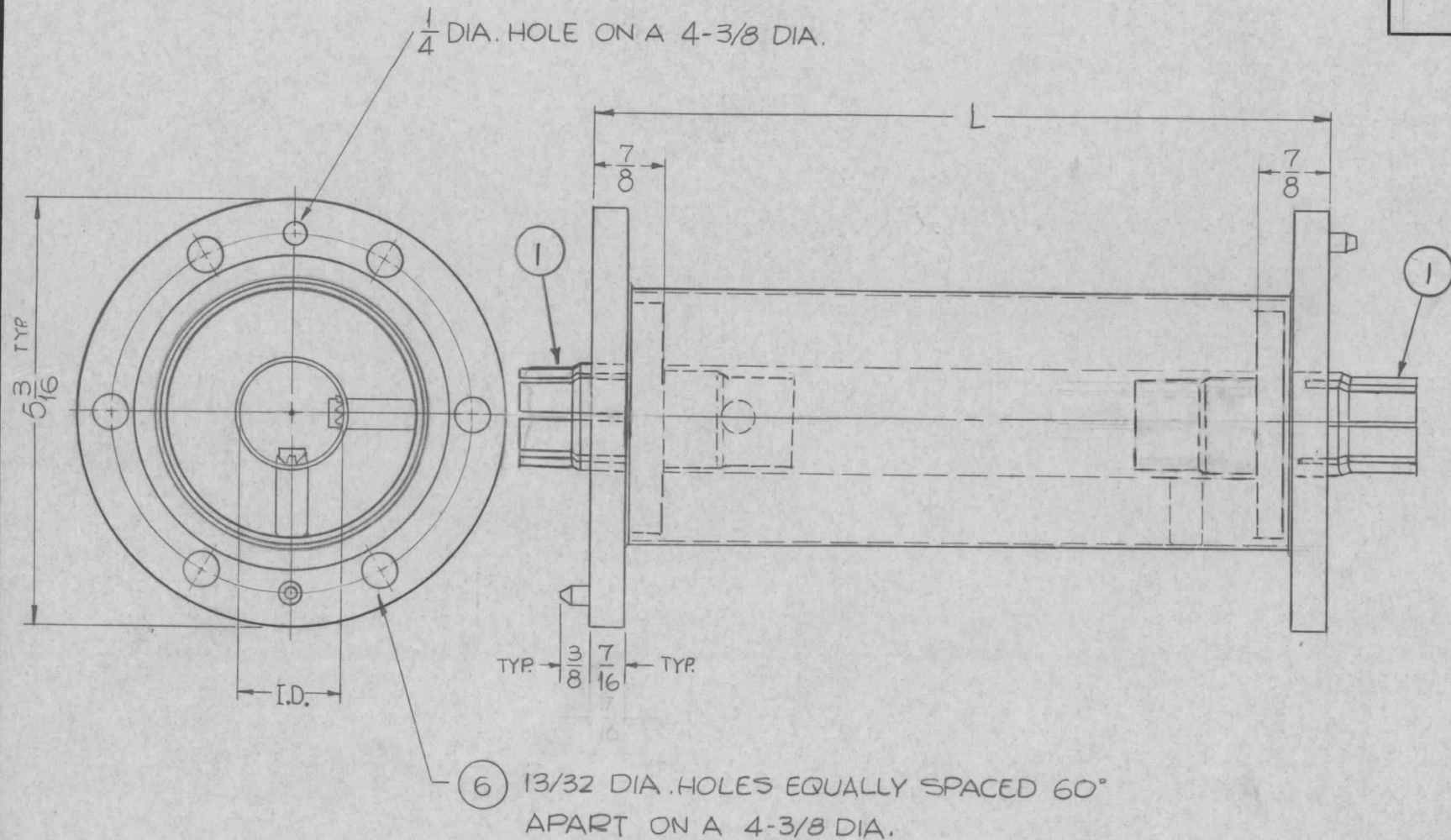
POWER ~ 1500 KW
 FREQUENCY ~ 0-750 MC
 IMPEDANCE ~ 50 Ω
 TMC NO.

REQ'D.	ITEM	PART NUMBER	DESCRIPTION	SYMBOL
LIST OF MATERIAL				
MATERIAL		THE TECHNICAL MATERIEL CORP. MAMARONECK, NEW YORK		
FINISH		TITLE LINE RF TRANSMISSION 6 1/8 RIGID		
UNLESS OTHERWISE SPECIFIED DIMENSIONS ARE IN INCHES AND INCLUDE CHEMICALLY APPLIED OR PLATED FINISHES		DRAWN SRG	DATE 4-4-63	FINAL APPROVAL Rpe
		CHECKED aa	DATE	
DECIMALS .X ± .05 .XX ± .01 .XXX ± .005		ELECT. DES. 20	DATE 5/8/64	PO-265 0
FRACTIONS ± 1/64 ANGLES ± 0° 30'		MECH. DES. Rpe	DATE 5/8/64	
TOLERANCES				SHEET
				REV. LTR.

NOTES

THE CONTENTS OF THIS DRAWING ARE THE EXCLUSIVE PROPERTY OF THE TECHNICAL MATERIEL CORP. ITS UNAUTHORIZED USE OR REPRODUCTION IN WHOLE OR IN PART IS STRICTLY FORBIDDEN.

Q'TY./UNIT	MODEL USED ON	ASS'Y. NO.
	CODE	S-401-31



PO-266-50-L
 TMC NO. NOMINAL IMPEDANCE LENGTH IN INCHES

PO-266 A

REVISIONS						
SYM	DESCRIPTION	DATE	E.M.N. NO.	DRAFT	CHKD	APPD
0	ORIGINAL RELEASE FOR PRODUCTION	5-16-64		SRG		
A	ITEM "1" ADDED	6/8/64	14184	E	SRG	SRG

TMC NO.	IMPEDANCE	I.D.	ITEM 1 (SEE NOTE 1)
PO-266-50	50	1.231	PO210-50
PO-266-70	70	.805	PO210-70

NOTES:
 1. ITEM "1", INNER CONNECTOR, TO BE SUPPLIED BY MANUFACTURER. QUANTITY "2".

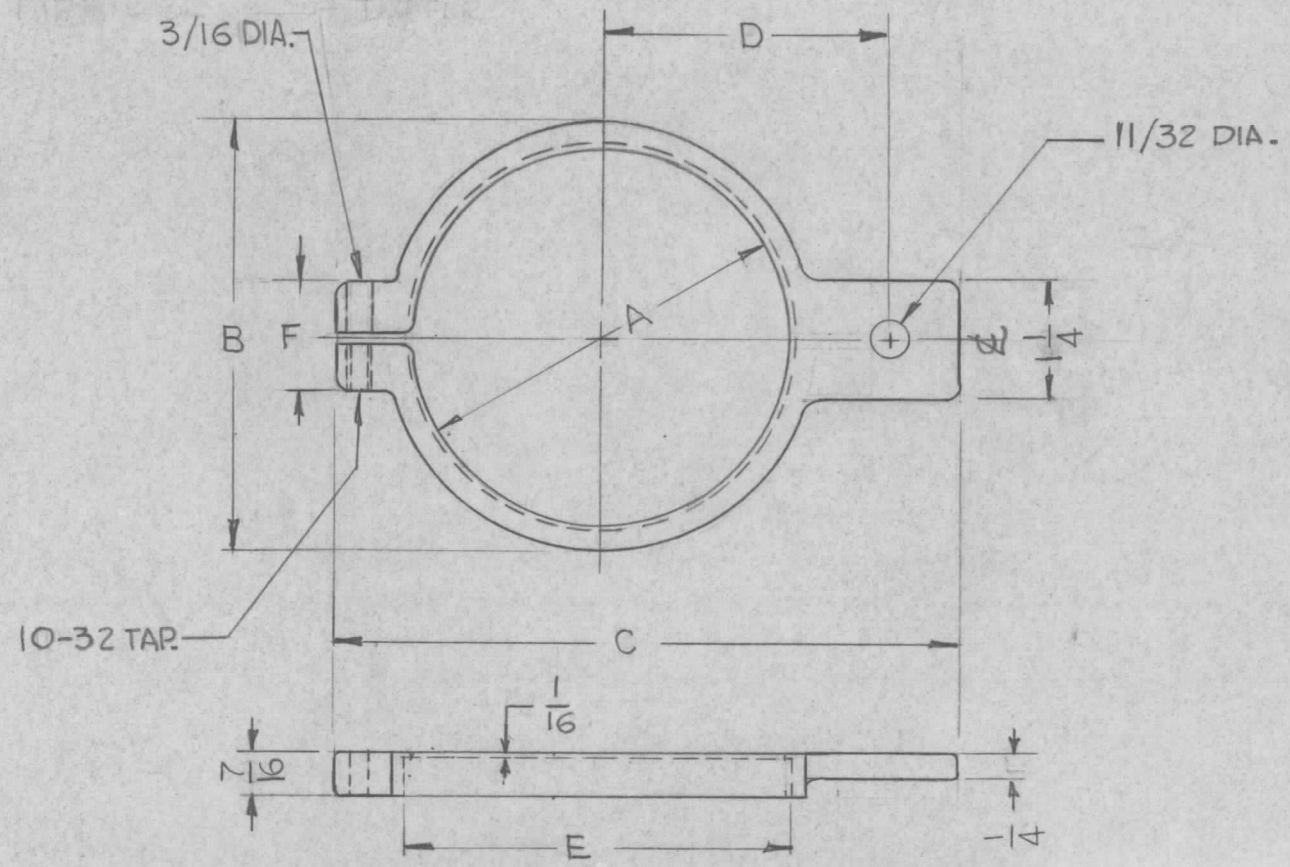
REQ'D.	ITEM	PART NUMBER	DESCRIPTION	SYMBOL
F. BUDETTI				
LIST OF MATERIAL				
MATERIAL			THE TECHNICAL MATERIEL CORP. MAMARONECK, NEW YORK	
FINISH			TITLE LINE, RF. TRANSMISSION 3-1/8 RIGID, FLANGED	
UNLESS OTHERWISE SPECIFIED DIMENSIONS ARE IN INCHES AND INCLUDE CHEMICALLY APPLIED OR PLATED FINISHES			DRAWN SRG	DATE 5-28-63
DECIMALS .X ± .05 .XX ± .01 .XXX ± .005			CHECKED aa	DATE
FRACTIONS ± 1/64 ANGLES ± 0° 30'			ELECT. DES. SRG	DATE 5/13/64
TOLERANCES			MECH. DES. SRG	DATE
THE CONTENTS OF THIS DRAWING ARE THE EXCLUSIVE PROPERTY OF THE TECHNICAL MATERIEL CORP. ITS UNAUTHORIZED USE OR REPRODUCTION IN WHOLE OR IN PART IS STRICTLY FORBIDDEN.			FINAL APPROVAL Roe PO-266	
NOTES			SHEET	
			REV. LTR. A	

1	GPT-200K	AX-392
Q'TY./UNIT	MODEL USED ON	ASS'Y. NO.
SCALE	CODE	S401-31

TMC PART No.	DIMENSIONS						REQD	SECTION
	A	B	C	D	E	F		
PO 267-1	3 5/32	3 11/16	5 3/4	2 5/8	3 1/4	1 1/8	1	AX-393
PO 267-2	3 15/16	4 1/2	6 1/2	3	4 1/16	1 3/16	2	AX-393

PO-267 0

REVISIONS					
SYM	DESCRIPTION	DATE	E.M.N. NO.	DRAFT	CHKD APPD
0	ORIGINAL RELEASE FOR PRODUCTION	5-13-64	0	A.M.	



REQ'D.	ITEM	PART NUMBER	DESCRIPTION	SYMBOL
LIST OF MATERIAL				
MATERIAL			THE TECHNICAL MATERIEL CORP. MAMARONECK, NEW YORK	
FINISH			TITLE CONNECTOR, FILAMENT RING	
UNLESS OTHERWISE SPECIFIED DIMENSIONS ARE IN INCHES AND INCLUDE CHEMICALLY APPLIED OR PLATED FINISHES			DRAWN G.D.L.	DATE 4-10-63
			CHECKED aa	DATE
			ELECT. DES. DB	DATE 4/16/64
			MECH. DES. MC	DATE 4/14/64
			FINAL APPROVAL <i>[Signature]</i>	
			PO-267 0	
			SHEET	REV. LTR.

GPT-200K		
Q'TY./UNIT	MODEL USED ON	ASS'Y. NO.
SCALE DO NOT SCALE	CODE C	S401-84

NOTES

THE CONTENTS OF THIS DRAWING ARE THE EXCLUSIVE PROPERTY OF THE TECHNICAL MATERIEL CORP. ITS UNAUTHORIZED USE OR REPRODUCTION IN WHOLE OR IN PART IS STRICTLY FORBIDDEN.

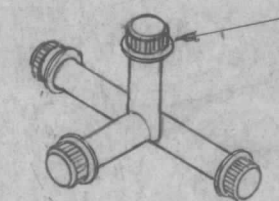
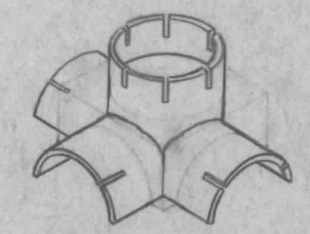
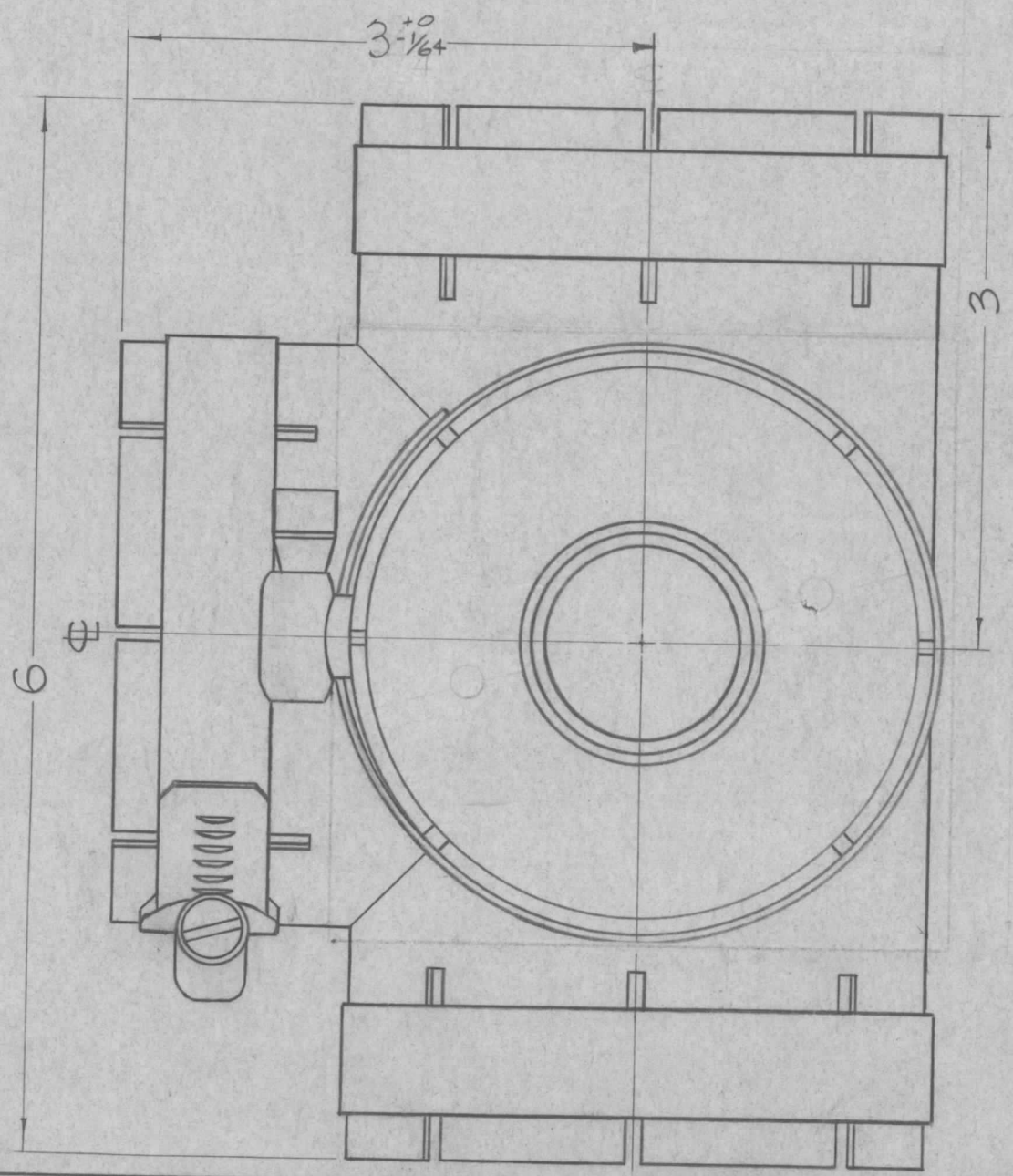
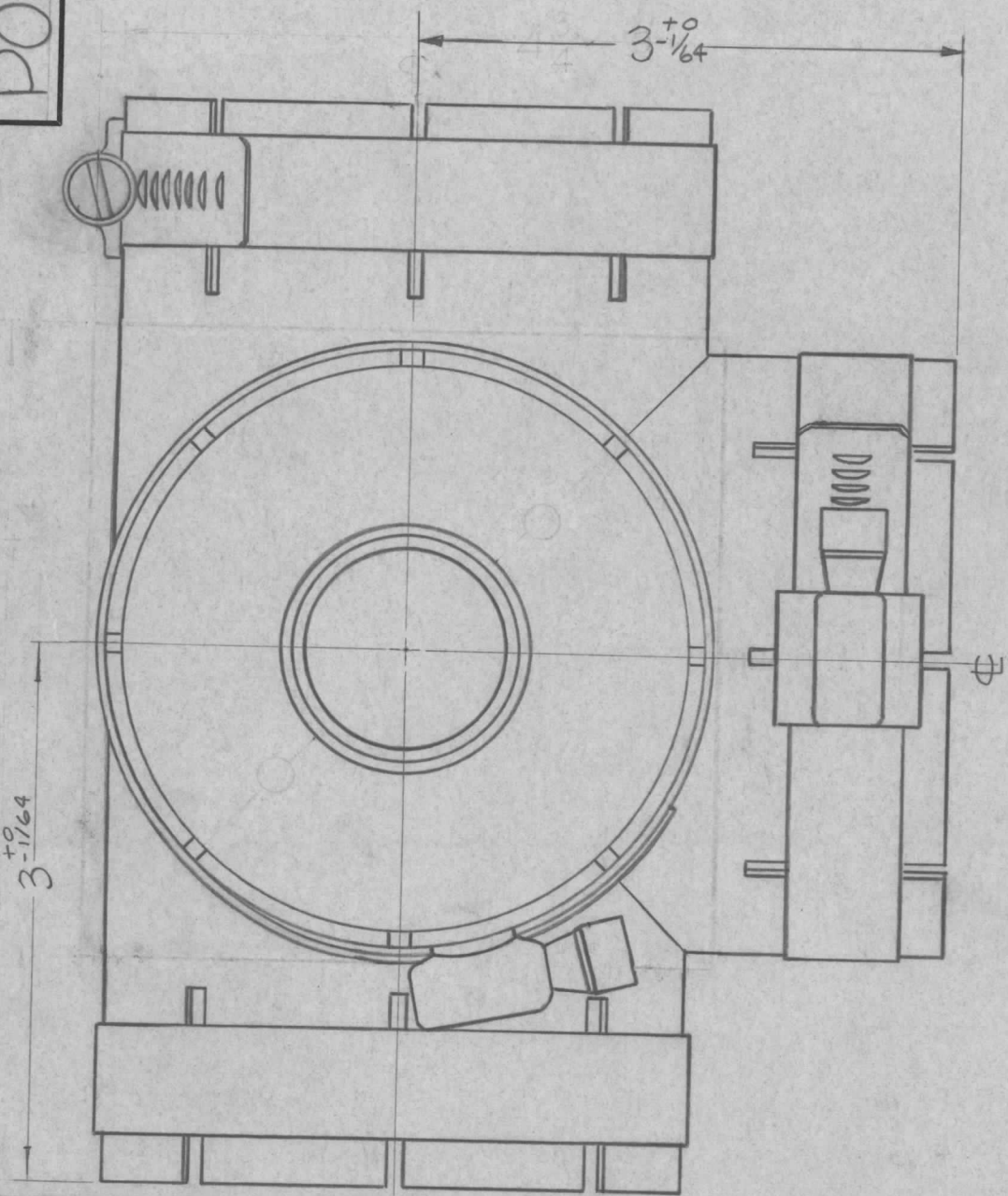
DECIMALS
.X ± .05
.XX ± .01
.XXX ± .005

FRACTIONS
± 1/64
ANGLES
± 0° 30'

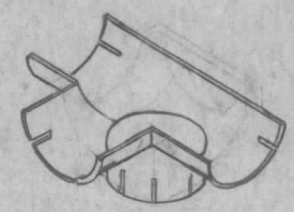
TOLERANCES

PO 271 A

THE CONTENTS OF THIS DRAWING ARE THE EXCLUSIVE PROPERTY OF THE TECHNICAL MATERIEL CORP. ITS UNAUTHORIZED USE OR REPRODUCTION IN WHOLE OR IN PART IS STRICTLY FORBIDDEN.



CONTACT, ELECTRICAL SPRING, TMC NO. PO 289-1



CLAMP TMC NO. CU 129-1455

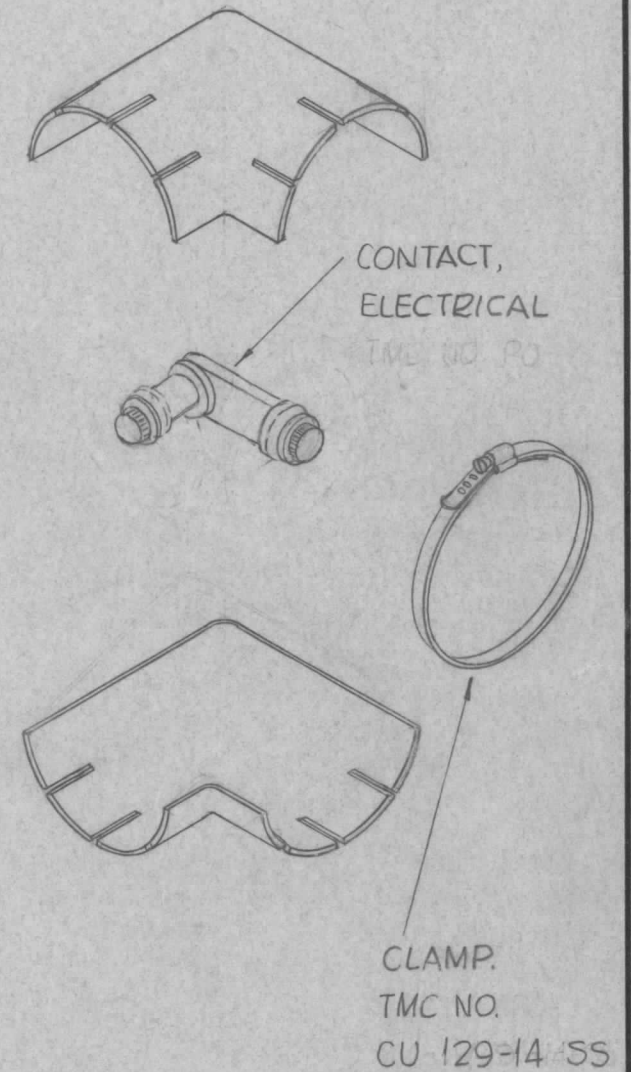
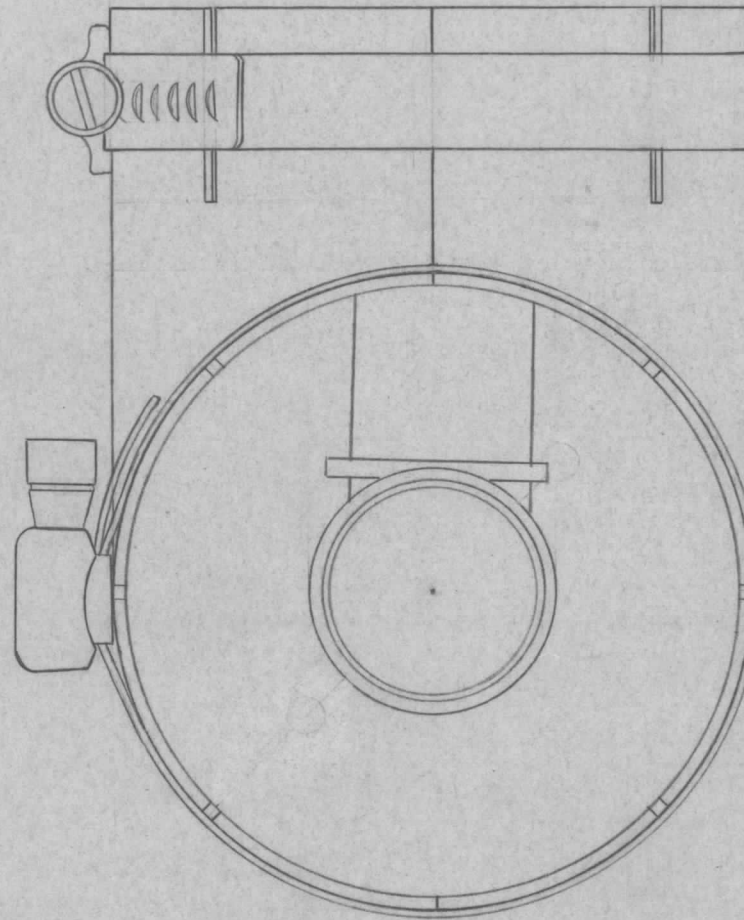
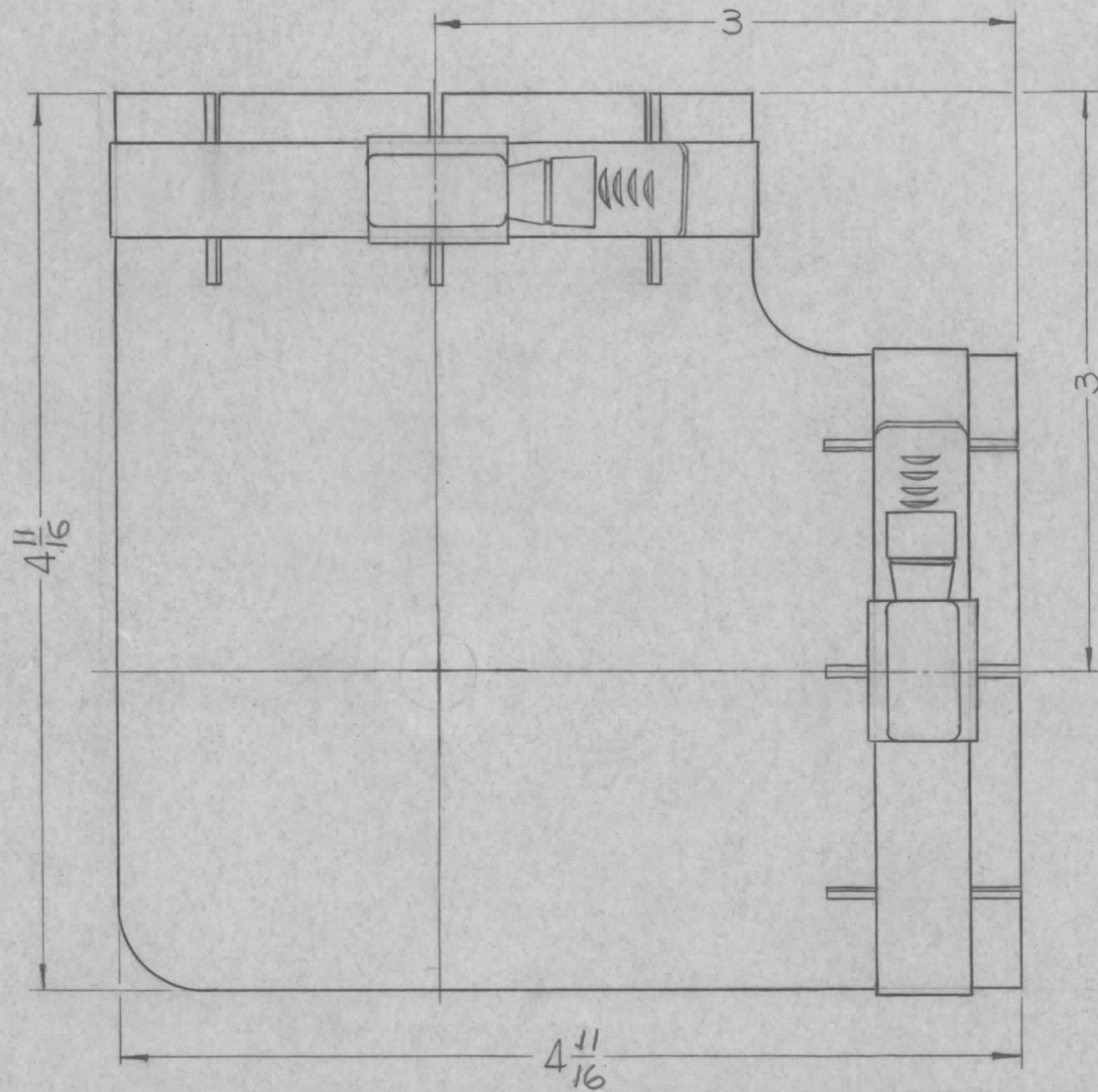
A	4 3/4 #2 DELE (2 PK) 3 1/2 #4 ADD (2 PK)	7/6/66	15528	JW	aa	
0	ORIGINAL RELEASE	7.17.64		LSB		
SYM	DESCRIPTION	DATE	CH. NO.	DRAFTS	CHECKER	ENG. APP.
UNLESS OTHERWISE SPECIFIED:		SCALE: 5A01-48 (1131)				
DIMENSIONS ARE IN INCHES		MAXIMUM ALLOWABLE TOLERANCES HAVE BEEN DETERMINED AND ANY DEVIATIONS WILL BE CAUSE FOR REJECTION. REMOVE ALL BURRS AND SHARP EDGES				
TOLERANCES ON FRACTIONS ± 1/64 DECIMALS ± .005 ANGLES ± 1/2°						

1	GPT-200K			5-11-63
REQ. PER UNIT	MODEL	SECTION	ASS'Y. NO.	DATE
USED ON				

REQ.	ITEM	PART NO.	F. BUDETTI	DESCRIPTION	SYMBOL
			THE TECHNICAL MATERIEL CORP. MAMARONECK, NEW YORK		
			ELBOW, 4 WAY		
			3-1/8		
			John C. Biele	AA	aa
			DRAWN	CHECKED	FINAL APPROVAL
			aa	aa	PO 271 A
			ELEC. DES. APP.	MECH. DES. APP.	

PO-273 B

THE CONTENTS OF THIS DRAWING ARE THE EXCLUSIVE PROPERTY OF THE TECHNICAL MATERIEL CORP. ITS UNAUTHORIZED USE OR REPRODUCTION IN WHOLE OR IN PART IS STRICTLY FORBIDDEN.



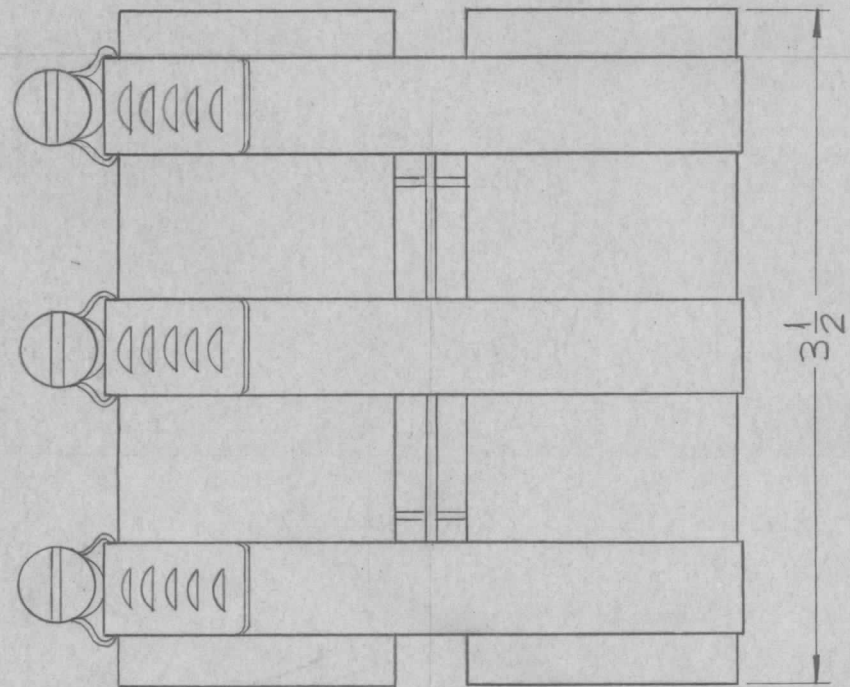
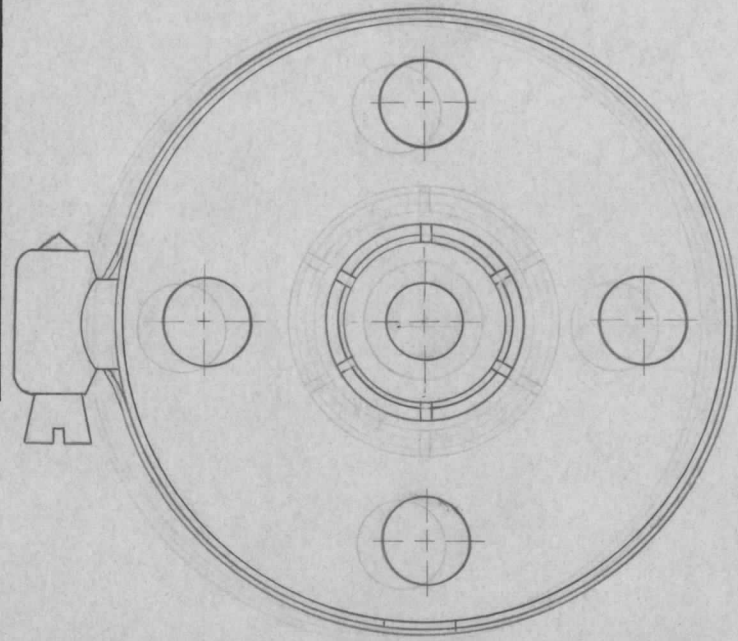
B	4 11/16 WAS 4 3/4 (2 PLS.)	1/6/66	15528	D.V.V.	GC/A	AA
A	TEFLON SPACES DELETED	6-24-65	14330	DVV	GC/A	BB
O	ORIGINAL RELEASE	7-17-64		LB		

SYM	DESCRIPTION	DATE	CH. NO.	DRAFTS	CHECKER	ENG. APP.
UNLESS OTHERWISE SPECIFIED:		SCALE: 5401-48 (968-1)				
DIMENSIONS ARE IN INCHES		MAXIMUM ALLOWABLE TOLERANCES HAVE BEEN DETERMINED AND ANY DEVIATIONS WILL BE CAUSE FOR REJECTION.				
TOLERANCES ON FRACTIONS ± 1/64		DECIMALS ± .005				
		ANGLES ± 1/2°				
		REMOVE ALL BURRS AND SHARP EDGES				

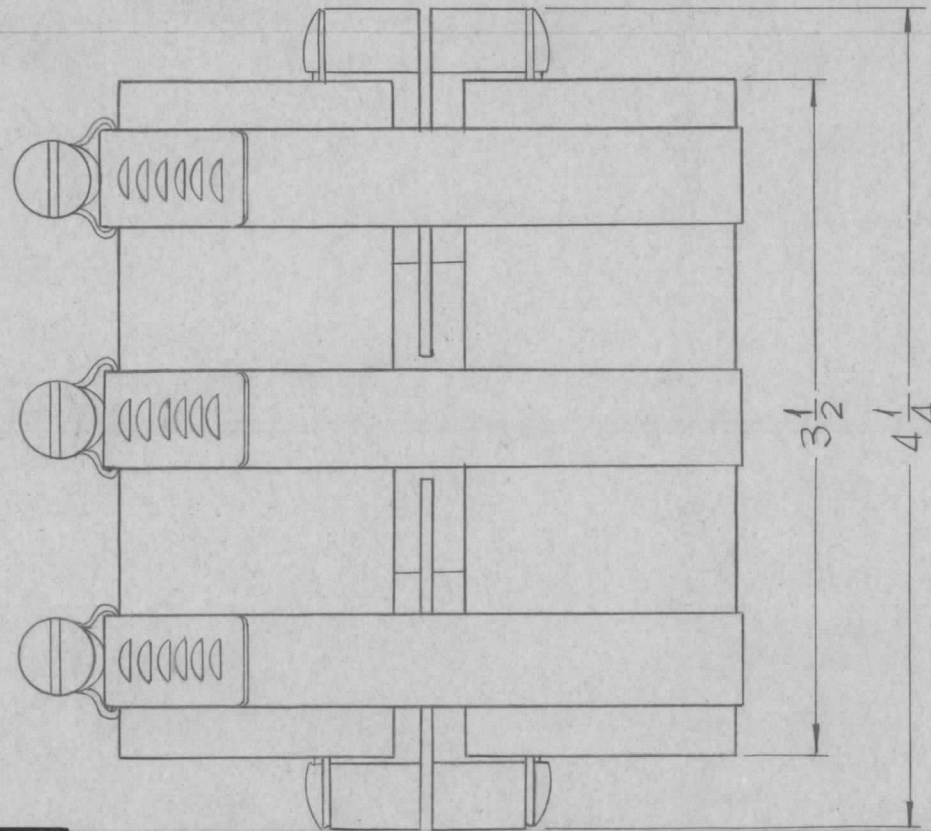
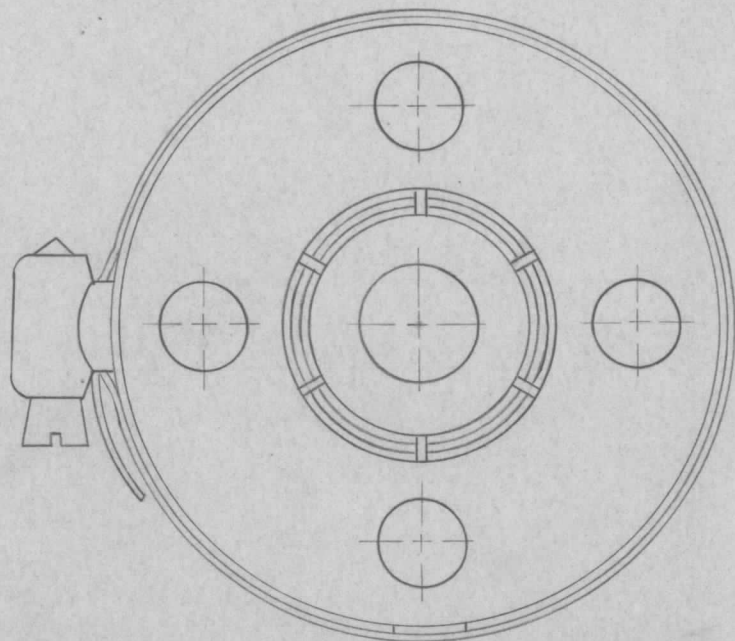
REQ. PER UNIT	MODEL	SECTION	ASS'Y. NO.	DATE
1	GPT-200K			5-23-63
USED ON				

REQ.	ITEM	PART NO.	F. BUDETTI	DESCRIPTION	SYMBOL
			THE TECHNICAL MATERIEL CORP. MAMARONECK, NEW YORK		
STOCK SIZE			SPLIT ELBOW ASS'Y		
MATERIAL			3-1/8		
TYPE & TEMPER		HEAT TREAT. SPEC.	DRAWN	CHECKED	FINAL APPROVAL
			SRG	NO	GC
FINISH & SPEC. NO.		ELEC. DES. APP.	MECH. DES. APP.	PO-273 B	

PO-275 0

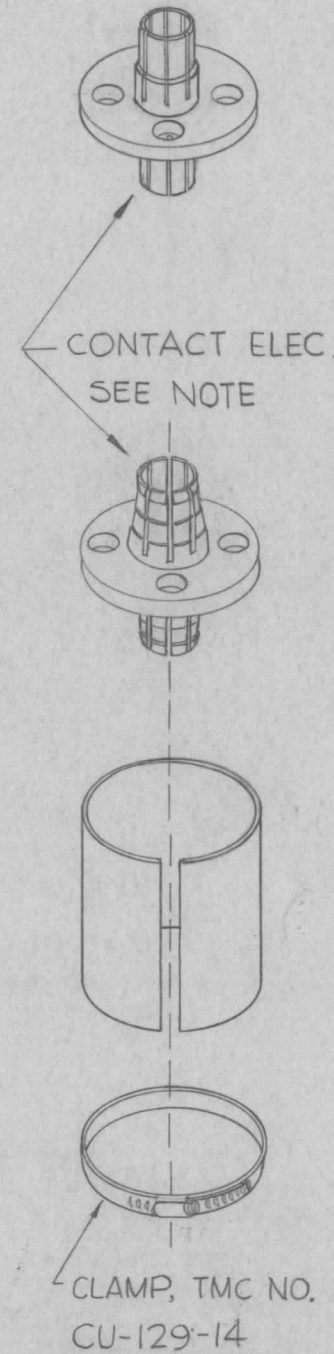


PO-275-70



PO-275-50

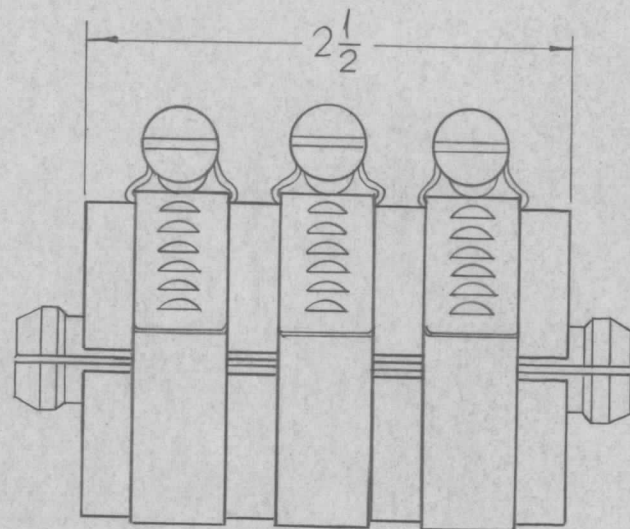
NOTE: FOR SPARE PARTS ONLY
 USE PO-210-50 FOR PO-275-50
 USE PO-210-70 FOR PO-275-70



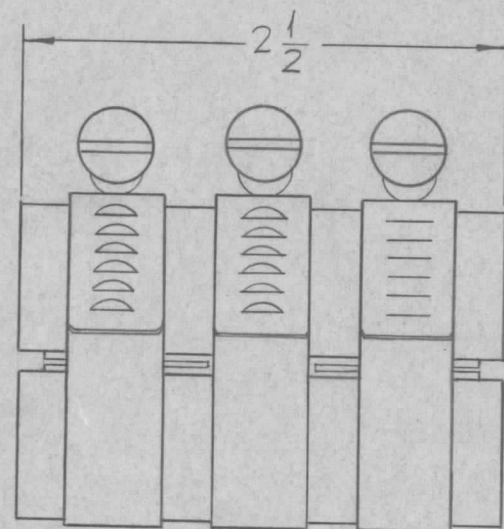
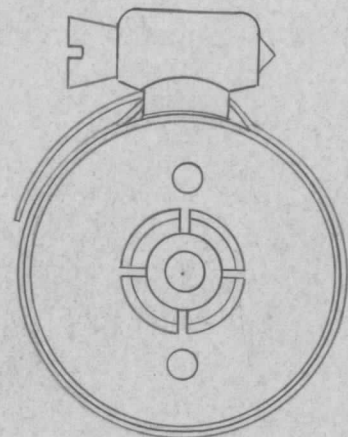
SYMBOL	DESCRIPTION	DATE	CH. NO.	DRAFTS	CHECKER	ENG. APP.
Ø	ORIGINAL RELEASE	7.17.64		ASB		
UNLESS OTHERWISE SPECIFIED:		SCALE: 5/401-31				
DIMENSIONS ARE IN INCHES		MAXIMUM ALLOWABLE TOLERANCES HAVE BEEN DETERMINED AND ANY DEVIATIONS WILL BE CAUSE FOR REJECTION. REMOVE ALL BURRS AND SHARP EDGES				
TOLERANCES ON FRACTIONS ± 1/64 DECIMALS ± .005 ANGLES ± 1/2°						

REQ. PER UNIT	MODEL	SECTION	ASS'Y. NO.	DATE
1	GPT-200K		AX-392	6-18-63
USED ON				

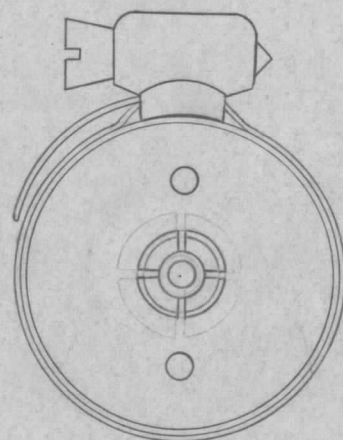
REQ. ITEM	PART NO.	F. BUDETTI	DESCRIPTION	SYMBOL
			THE TECHNICAL MATERIEL CORP. MAMARONECK, NEW YORK	
			COUPLING, UNGASSED 3-1/8	
		SRG	ME	RL
		DRAWN	CHECKER	FINAL APPROVAL
		ØB	ØØ	PO-275
		ELEC. DES. APP.	MECH. DES. APP.	Ø



PO-276-50



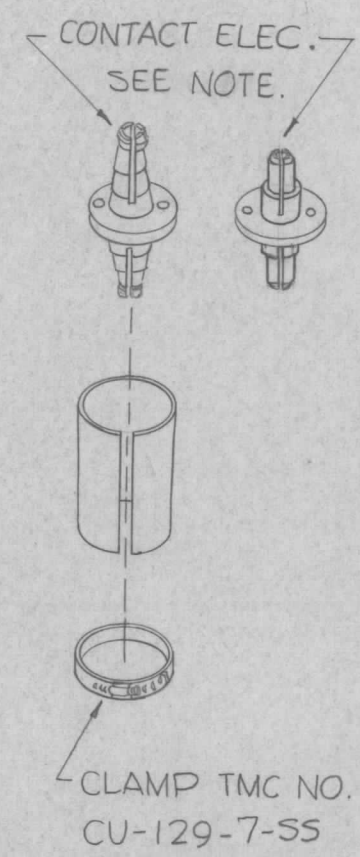
PO-276-70



PO-276

REVISIONS						
SYM	DESCRIPTION	DATE	E.M.N. NO.	DRAFT	CHKD	APPD
0	ORIGINAL RELEASE FOR PRODUCTION	5-18-64		SRG		

NOTE: FOR SPARE PARTS ONLY
 USE ~PO-218-50 FOR PO-276-50
 USE ~PO-218-70 FOR PO-276-70

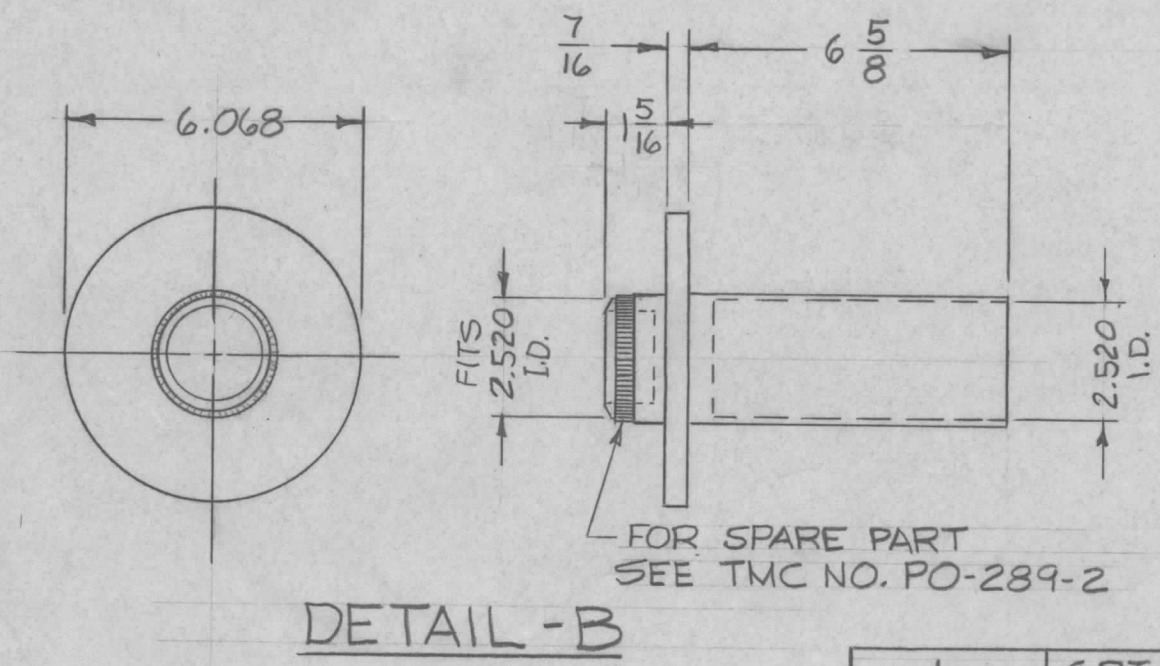
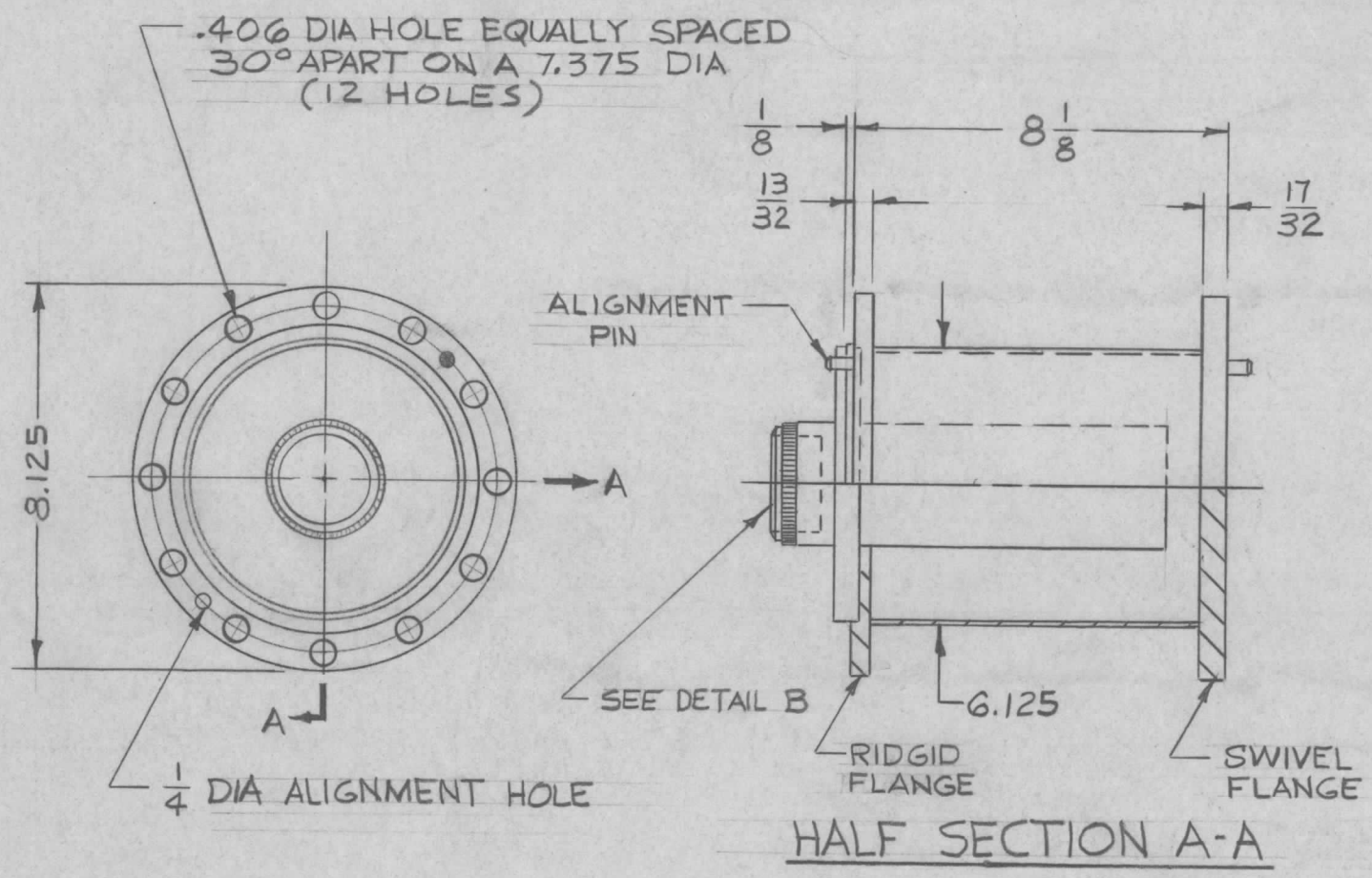


REQ'D.	ITEM	PART NUMBER	DESCRIPTION	SYMBOL
F. BUDETTI				
LIST OF MATERIAL				
MATERIAL			THE TECHNICAL MATERIEL CORP. MAMARONECK, NEW YORK	
FINISH			TITLE COUPLING UNGASSED 1-5/8	
UNLESS OTHERWISE SPECIFIED DIMENSIONS ARE IN INCHES AND INCLUDE CHEMICALLY APPLIED OR PLATED FINISHES			DRAWN <i>SRG</i> CHECKED <i>aa</i> ELECT. DES. <i>SRG</i> MECH. DES. <i>WR</i>	DATE DATE DATE DATE
DECIMALS .X ± .05 .XX ± .01 .XXX ± .005			FRACTIONS ± 1/64 ANGLES ± 0° 30'	FINAL APPROVAL <i>[Signature]</i> PO-276 SHEET
TOLERANCES ± 0° 30'			DATE 5/13/64	REV. LTR. 0

	GPT-200K	AX-392
Q'TY./UNIT	MODEL USED ON	ASS'Y. NO.
SCALE 1:1	CODE	5401-31
THE CONTENTS OF THIS DRAWING ARE THE EXCLUSIVE PROPERTY OF THE TECHNICAL MATERIEL CORP. ITS UNAUTHORIZED USE OR REPRODUCTION IN WHOLE OR IN PART IS STRICTLY FORBIDDEN.		

NOTES

A
PO-282



REVISIONS					
SYM	DESCRIPTION	DATE	E.M.N. NO.	DRAFT	CHKD APPD
0	ORIGINAL RELEASE FOR PRODUCTION	5-27-64	0	A.M.	
A	MFR. HARDWARE REVISED. ADDED HARDWARE MATERIAL STAINLESS STEEL	3-28-67	18039	L.A.K.	<i>CB</i> <i>ah</i>

SUPPLIED BY MFR :
 SCREW, MACH. _____ HEX. 3/8-16, 1 3/4 LONG — 12-REQ'D.
 WASHER, LOCK SPLIT _____ 3/8 _____ 12-REQ'D.
 NUT, HEX _____ 3/8-16 _____ 12-REQ'D.
 HARDWARE MATERIAL: STAINLESS STEEL.

NOTE :
 ALL DIMENSIONS FOR REF ONLY

REF. ID-292

REQ'D.	ITEM	PART NUMBER	DESCRIPTION	SYMBOL
F. BUDETTI LIST OF MATERIAL				
MATERIAL		THE TECHNICAL MATERIEL CORP. MAMARONECK, NEW YORK		
FINISH		TITLE ADAPTOR, BULKHEAD LINE R.F. TRANSMISSION 6 1/8		
UNLESS OTHERWISE SPECIFIED DIMENSIONS ARE IN INCHES AND INCLUDE CHEMICALLY APPLIED OR PLATED FINISHES		DRAWN A TUESI	DATE 10-31-63	FINAL APPROVAL <i>Roe</i>
		CHECKED <i>aa</i>	DATE	
		ELECT. DES. <i>CB</i>	DATE	
		MECH. DES. <i>bc</i>	DATE 3/19/64	
				PO-282
				A
				REV. LTR.

1	GPT 200 K	AX-397
Q'TY./UNIT	MODEL USED ON	ASS'Y. NO.
SCALE 1/4=1"	CODE C	SA01-276(D/O 601-083)
THE CONTENTS OF THIS DRAWING ARE THE EXCLUSIVE PROPERTY OF THE TECHNICAL MATERIEL CORP. ITS UNAUTHORIZED USE OR REPRODUCTION IN WHOLE OR IN PART IS STRICTLY FORBIDDEN.		

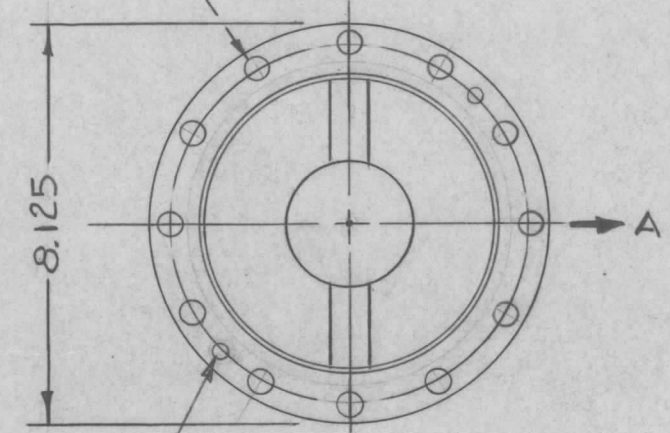
NOTES

REVISIONS

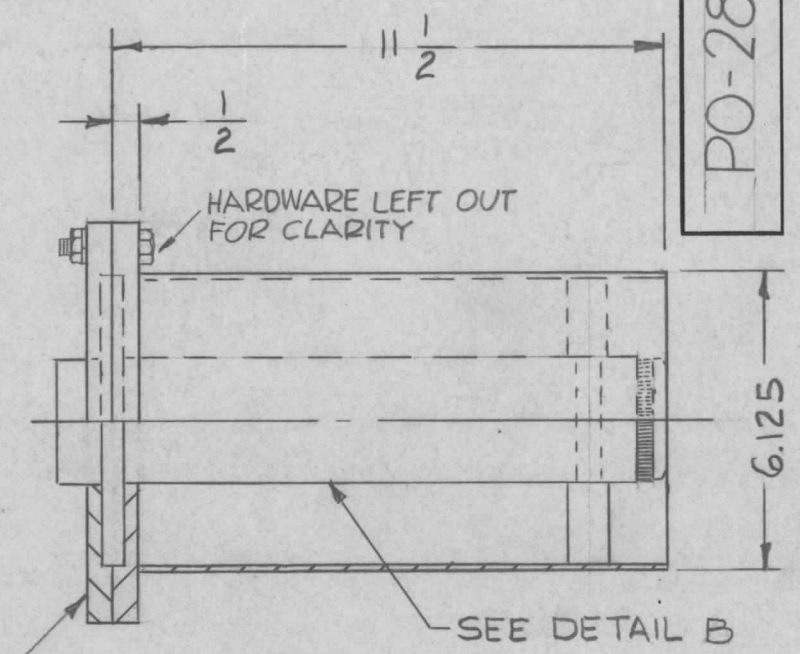
SYM	DESCRIPTION	DATE	E.M.N. NO.	DRAFT	CHKD	APPD
0	ORIGINAL RELEASE FOR PRODUCTION	5-27-64	0	A.M.		

PO-283

.406 DIA HOLE EQUALLY SPACED
30° APART ON A 7.375 DIA
(12 REQ'D.)



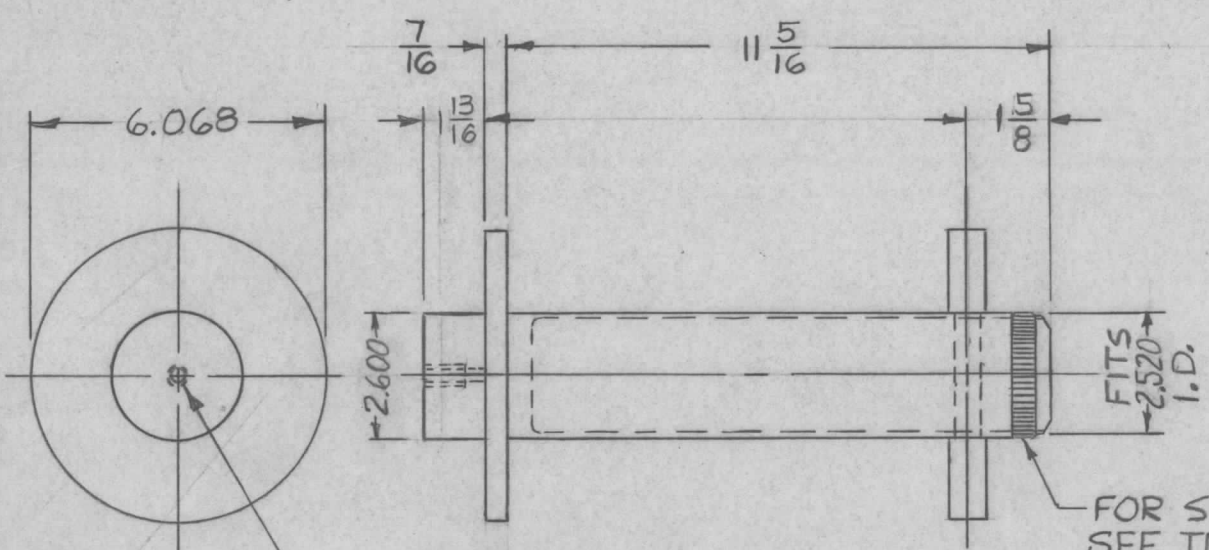
1/4 DIA ALIGNMENT HOLE
(2-REQ'D.)



TMC NO. PO-288
HALF SECTION A-A

SUPPLIED BY MFR. :
SCREW, MACH. — SCHH3716NR28 — 12 REQ'D.
WASHER, LOCK SPLIT — LSW 37HRN — 12 REQ'D.
NUT, HEX — NTH3716NR16 — 12 REQ'D.

NOTE :
ALL DIMENSIONS FOR REF. ONLY



3/8 -16 TAP X 3/4 MIN DEPTH

DETAIL - B

FOR SPARE PART
SEE TMC NO. PO-289-2

REF. ID-292

1	GPT 200K	AX-397
Q'TY./UNIT	MODEL USED ON	ASS'Y. NO.
SCALE 1/4" = 1"	CODE C	5401-276 (P/O-601-083)

REQ'D.	ITEM	PART NUMBER	DESCRIPTION	SYMBOL
F. BUDETTI LIST OF MATERIAL				
MATERIAL THE TECHNICAL MATERIEL CORP. MAMARONECK, NEW YORK				
FINISH TITLE ADAPTOR, LINE RE. TRANSMISSION 6 1/8 (RIGHT)				
UNLESS OTHERWISE SPECIFIED DIMENSIONS ARE IN INCHES AND INCLUDE CHEMICALLY APPLIED OR PLATED FINISHES				
DECIMALS .X ± .05 .XX ± .01 .XXX ± .005	TOLERANCES	FRACTIONS ± 1/64 ANGLES ± 0° 30'	DRAWN ATURSI	DATE 10-29-63
			CHECKED aa	DATE
			ELECT. DES. [Signature]	DATE
			MECH. DES. [Signature]	DATE 5/1/64
FINAL APPROVAL [Signature]				DATE
SHEET PO-283				REV. LTR. 0

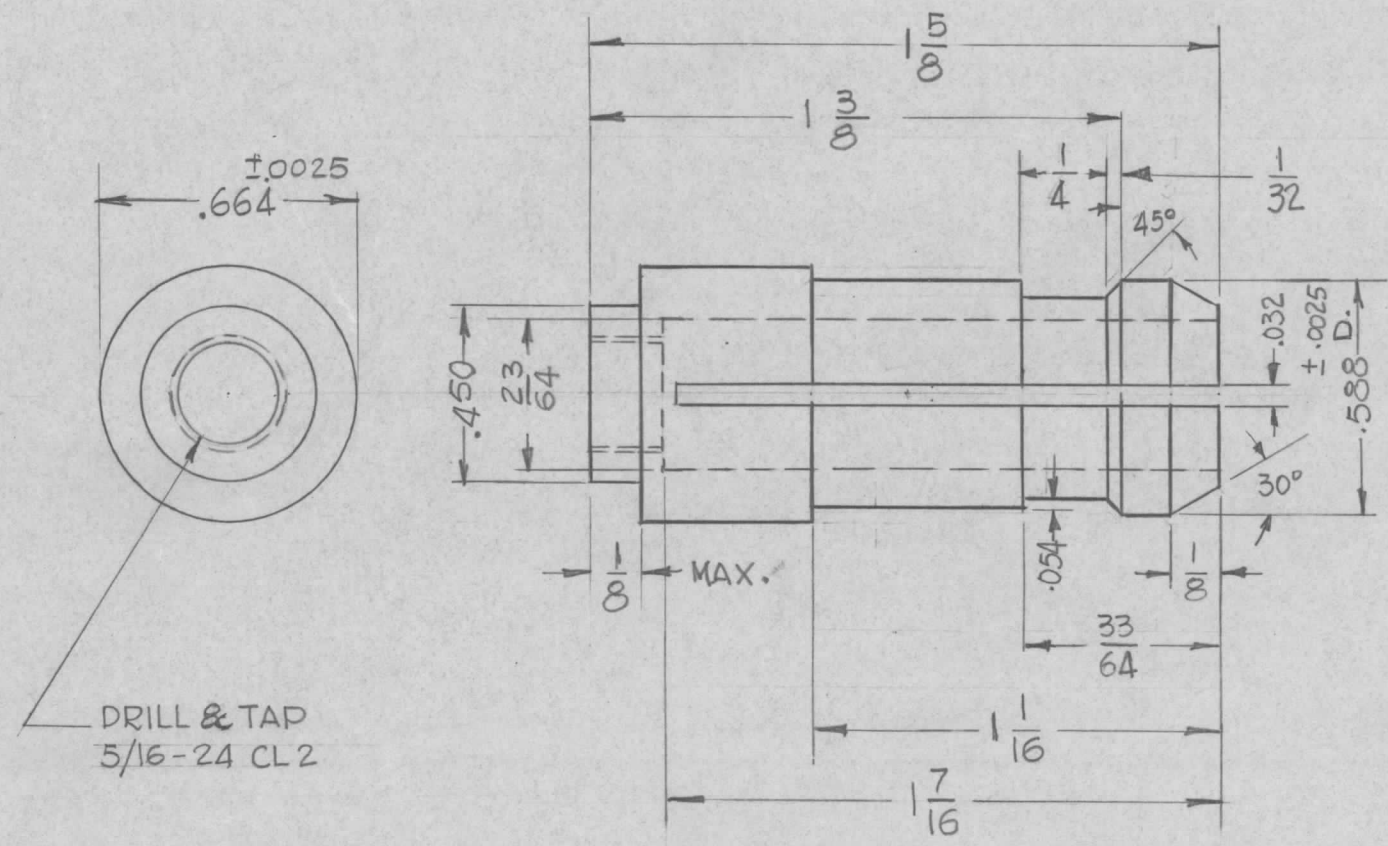
NOTES

THE CONTENTS OF THIS DRAWING ARE THE EXCLUSIVE PROPERTY OF THE TECHNICAL MATERIEL CORP. ITS UNAUTHORIZED USE OR REPRODUCTION IN WHOLE OR IN PART IS STRICTLY FORBIDDEN.

PO-286

REVISIONS

SYM	DESCRIPTION	DATE	E.M.N. NO.	DRAFT	CHKD	APPD
-----	-------------	------	------------	-------	------	------



MATERIAL - BERYLLIUM COPPER
 HEAT TREAT - 600°F FOR 2 HOURS, AFTER MACHINING
 FINISH : S-135 NICKEL PLATE, BRIGHT

- 2- ALL OUTER SURFACES MUST BE FREE OF DETRIMENTAL HOLES, BURRS & CHATTER MARKS.
- 1- ALL DIAMETERS TO BE CONCENTRIC WITHIN .005.

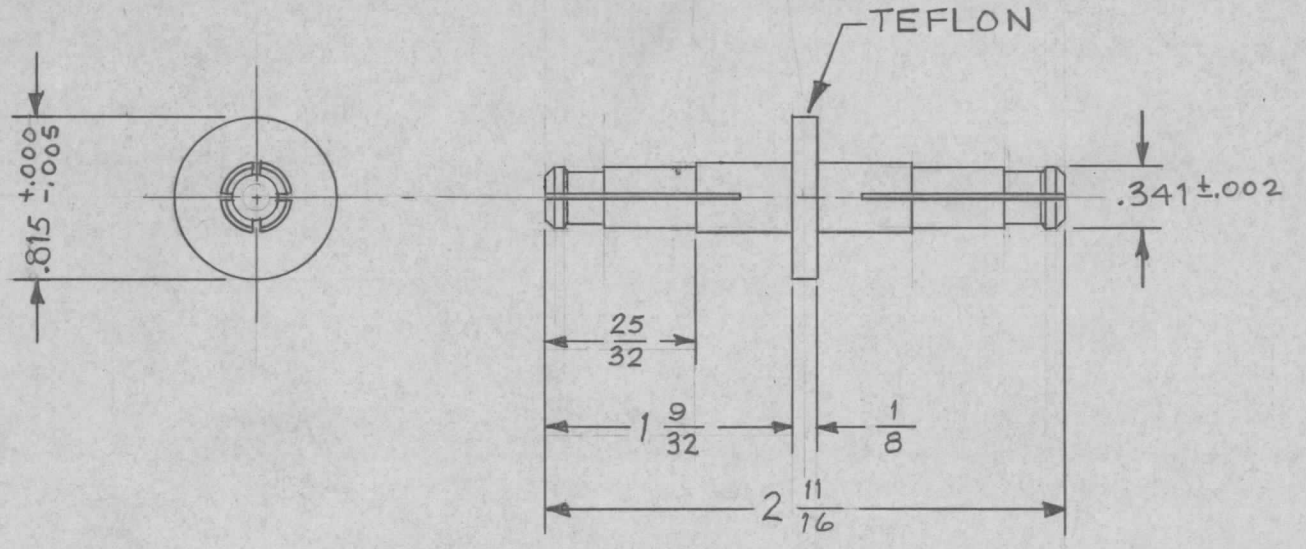
NOTES

TCA-85/EIA-51625		ASS'Y. NO.
Q'TY./UNIT	MODEL USED ON	
SCALE 1:1	CODE	
THE CONTENTS OF THIS DRAWING ARE THE EXCLUSIVE PROPERTY OF THE TECHNICAL MATERIEL CORP. ITS UNAUTHORIZED USE OR REPRODUCTION IN WHOLE OR IN PART IS STRICTLY FORBIDDEN.		

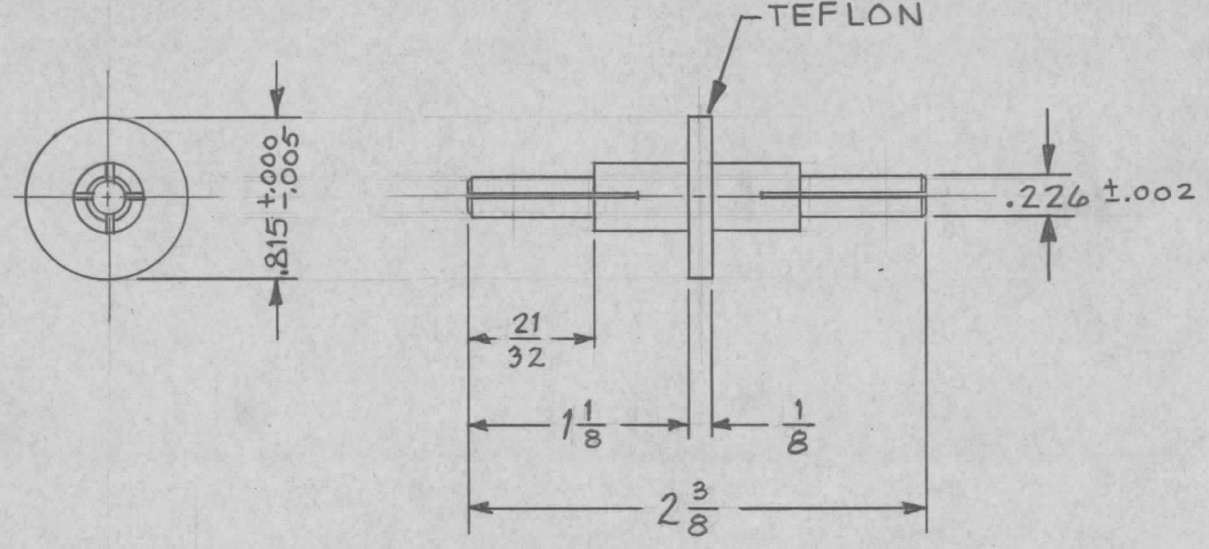
REQ'D.	ITEM	PART NUMBER	DESCRIPTION	SYMBOL
A. MARTINENGO LIST OF MATERIAL				
MATERIAL			THE TECHNICAL MATERIEL CORP. MAMARONECK, NEW YORK	
FINISH			TITLE CONNECTOR, CENTER CONDUCTOR	
UNLESS OTHERWISE SPECIFIED DIMENSIONS ARE IN INCHES AND INCLUDE CHEMICALLY APPLIED OR PLATED FINISHES			DRAWN G.D.L	DATE 8-3-63
			CHECKED H.W.	DATE 9/11/63
			ELECT. DES. J.M.	DATE 9/12/63
			MECH. DES.	DATE
			FINAL APPROVAL BP	
			PO-286	
			SHEET	REV. LTR.

TMC PART No.	IMPEDANCE	BODY MATERIAL	MFR. PART No.
PO-287-50	50 OHMS	PHOSPHOR BRONZE	18275
PO-287-70	70 OHMS	PHOSPHOR BRONZE	

A PO-287	REVISIONS						
	SYM	DESCRIPTION	DATE	E.M.N. NO.	DRAFT	CHKD	APPD
A	ON CHART TMC P/N WAS PO-258-(ELRDP)	8.26.64	12123	WJB	JCS	JC	



PO-287-50



PO-287-70

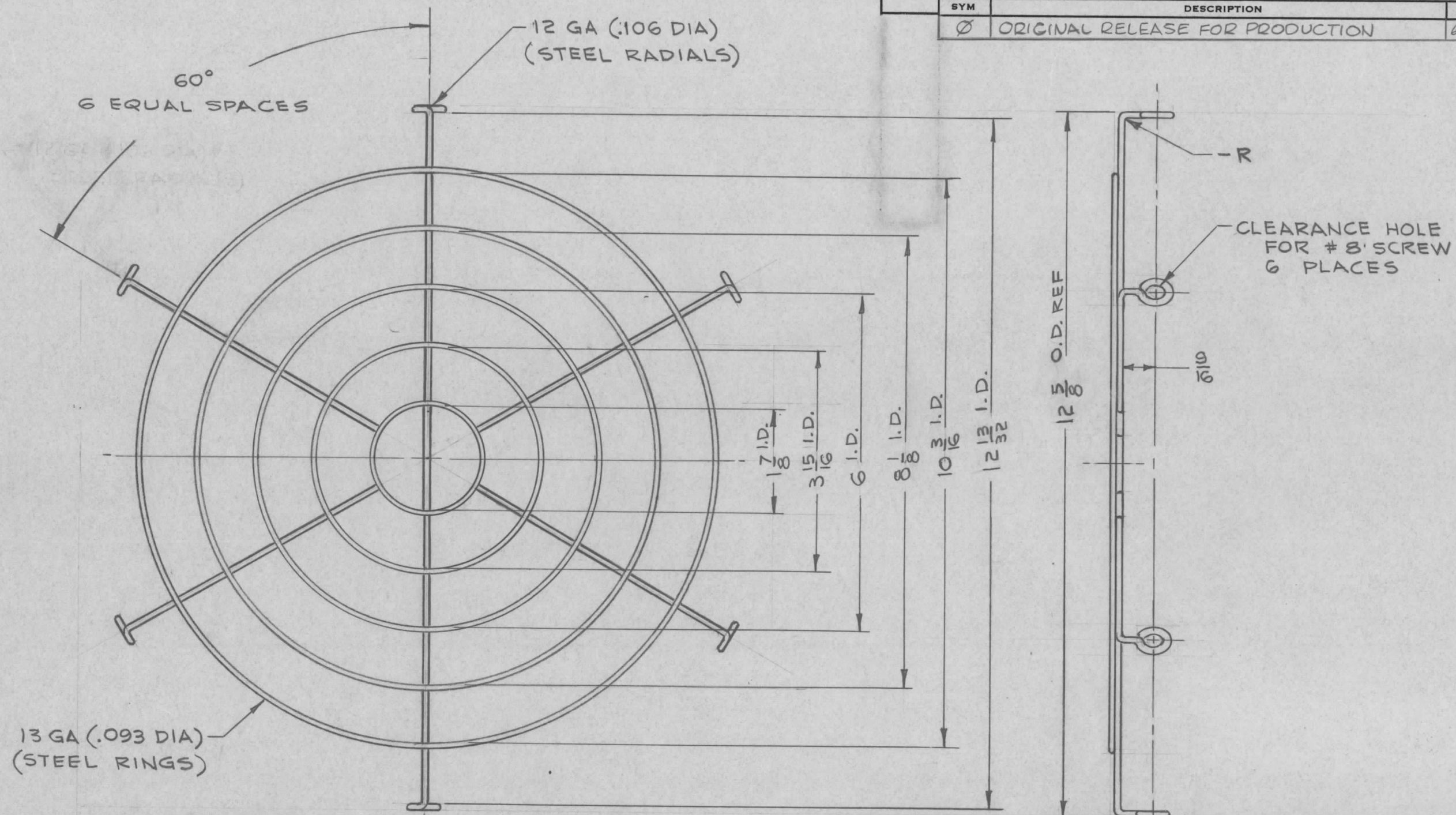
STANDARD DRAWING

Q'TY./UNIT	MODEL USED ON	ASS'Y. NO.
SCALE	CODE	S401-31

THE CONTENTS OF THIS DRAWING ARE THE EXCLUSIVE PROPERTY OF THE TECHNICAL MATERIEL CORP. ITS UNAUTHORIZED USE OR REPRODUCTION IN WHOLE OR IN PART IS STRICTLY FORBIDDEN.

REQ'D.	ITEM	PART NUMBER	MARTINENGO	DESCRIPTION	SYMBOL
MARTINENGO LIST OF MATERIAL					
MATERIAL			THE TECHNICAL MATERIEL CORP. MAMARONECK, NEW YORK		
SEE CHART			TITLE CONNECTOR, ELECTRICAL 7/8 INNER		
FINISH			DRAWN M TANTILLO		
UNLESS OTHERWISE SPECIFIED DIMENSIONS ARE IN INCHES AND INCLUDE CHEMICALLY APPLIED OR PLATED FINISHES			DATE 10-2-63	FINAL APPROVAL KTC	
DECIMALS .X ± .05 .XX ± .01 .XXX ± .005			DATE 10/12/63	DATE	
FRACTIONS ± 1/64 ANGLES ± 0° 30'			DATE	DATE	
TOLERANCES			DATE 10-2-63	SHEET	
NOTES			PO-287		A
			REV. LTR.		

REVISIONS					
SYM	DESCRIPTION	DATE	E.M.N. NO.	DRAFT	CHKD APPD
Ø	ORIGINAL RELEASE FOR PRODUCTION	6-10-65	AA	JD	



13 GA (.093 DIA)
(STEEL RINGS)

12 GA (.106 DIA)
(STEEL RADIALS)

60°
6 EQUAL SPACES

CLEARANCE HOLE
FOR #8 SCREW
6 PLACES

12 5/8 O.D. REF

7/8 I.D.
3 15/16 I.D.
6 I.D.
8 1/8 I.D.
10 3/16 I.D.
12 13/32 I.D.

ALL JOINTS TO BE ELEC. SPOTWELDED.

REQ'D.	ITEM	PART NUMBER	DESCRIPTION	SYMBOL
I. JOHNSON LIST OF MATERIAL				
MATERIAL		THE TECHNICAL MATERIEL CORP. MAMARONECK, NEW YORK		
FINISH		TITLE		
BRIGHT ZINC PLATE		GUARD, FAN		
UNLESS OTHERWISE SPECIFIED DIMENSIONS ARE IN INCHES AND INCLUDE CHEMICALLY APPLIED OR PLATED FINISHES		DRAWN	DATE	FINAL APPROVAL
		DATE	DATE	DATE
		DATE	DATE	DATE
		DATE	DATE	DATE
TOLERANCES		SHEET		
.X ± .05 .XX ± .01 .XXX ± .005		REV. LTR.		
FRACTIONS ± 1/64 ANGLES ± 0° 30'		REV. LTR.		

1	RAK-31A	BL-121
Q'TY./UNIT	MODEL USED ON	ASS'Y. NO.
SCALE	CODE	S-401-116 65-173

NOTES

THE CONTENTS OF THIS DRAWING ARE THE EXCLUSIVE PROPERTY
OF THE TECHNICAL MATERIEL CORP. ITS UNAUTHORIZED USE OR
REPRODUCTION IN WHOLE OR IN PART IS STRICTLY FORBIDDEN.