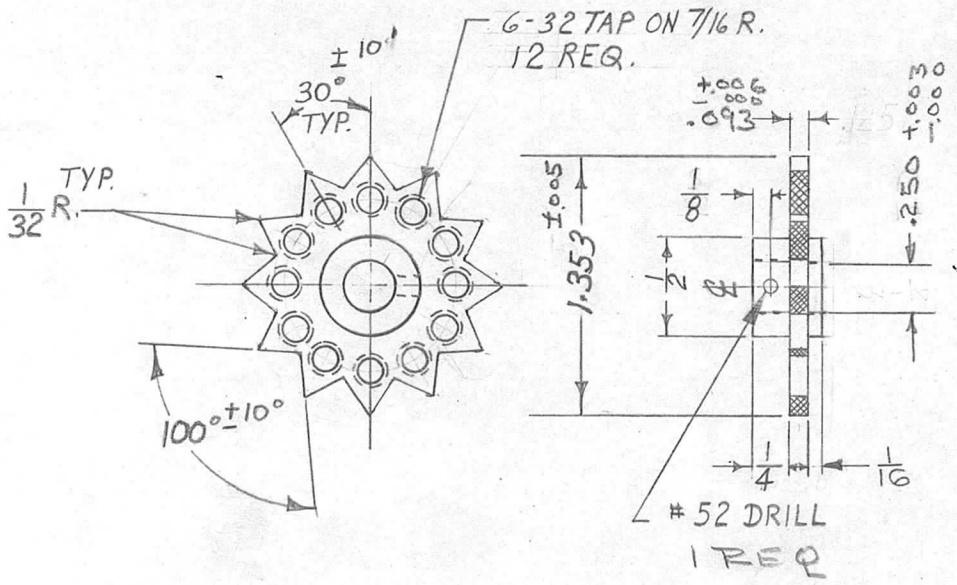


REQ. PER. UNIT	USED ON			PO-200	B
	MODEL	ASSY. NO.	DATE		
1	CHG-1		9-2-60		



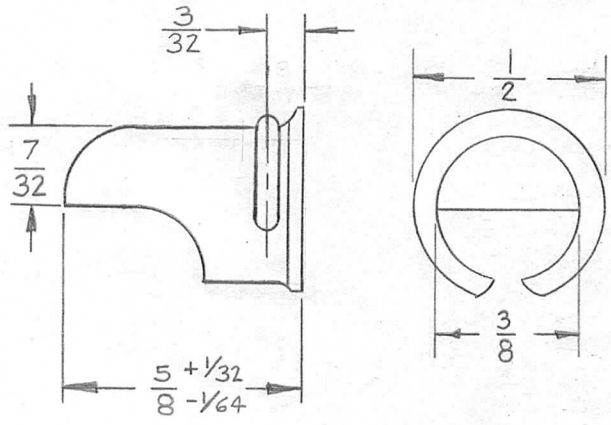
GROUP-102
RADIO SW. CORP.

ISSUE	ITEM	CHANGED FROM	DATE	CH. NO.	DRAFTS	CHECKER	ENG. APP.	REQ. ITEM	PART NO.	DESCRIPTION	SYMBOL		
B	1	DIM 1/16 WAS 1/8	6-28-63	9398						THE TECHNICAL MATERIEL CORP. MAMARONECK, NEW YORK DETENT, SPROCKET			
A	1	COMPLETELY REVISED	9-27-60	3015									
TOLERANCES			SCALE:					1/2 H					
DEC. DIM. ±			MAXIMUM ALLOWABLE TOLERANCES HAVE BEEN DETERMINED AND ANY DEVIATIONS WILL BE CAUSE FOR REJECTION. REMOVE ALL BURRS AND SHARP EDGES					TYPE & TEMPER	HEAT TREAT. SPEC.	DRAWN	CHECKED	FINAL APPROVAL	
FRAC. DIM. ± 1/64								NICKEL PLATE				PO-200	B
ANGULAR DIM. ±								FINISH & SPEC. NO.	ELEC. DES. APP	MECH. DES. APP			

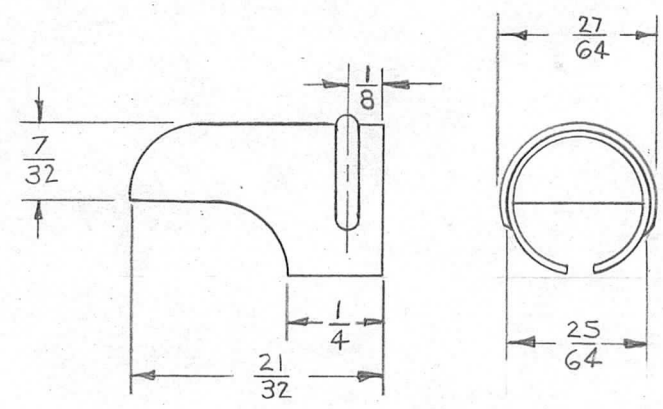
REQ. PER UNIT	USED ON		
	MODEL	ASSY. NO.	DATE
	CHG-1		11-17-60

PO-204 B

TMC PART NO	M'TL	FINISH	TYPE	MFR PART NO
PO-204-1	BRASS .010	NICKEL PLATE	STRAIGHT	3113
PO-204-2	BRASS .010	NICKEL PLATE	FLARED	3119



FLARED TYPE SHIELD

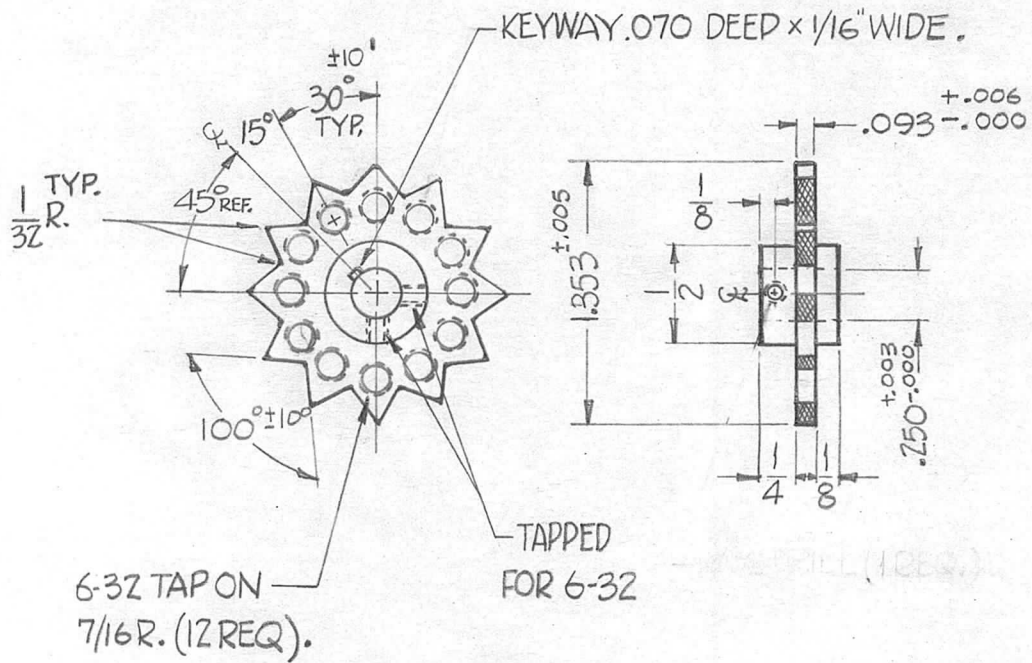


STRAIGHT TYPE SHIELD

REF- AMATOM ELECTRONIC HARDWARE Co. INC.

ISSUE	ITEM	CHANGED FROM	DATE	CH. NO.	DRAFTS	CHECKER	ENG. APP.	REQ. ITEM	PART NO.	DESCRIPTION	SYMBOL	
B	1	ON PO-204-1,2 (FINISH) NICKEL PLATE WAS CAD. PLATE	3-27-62	6552	G.S.	<i>[Signature]</i>	<i>[Signature]</i>			THE TECHNICAL MATERIEL CORP. MAMARONECK, NEW YORK	SHIELD, PILOT LIGHT	
A	2	CHART (MFG. NO.) - 1, 2, 3, 11B - 2, 3, 117	11-22-60	3551	<i>[Signature]</i>	<i>[Signature]</i>						
	1	CHART (FINISH) WAS BRIGHT DIP										
TOLERANCES			SCALE: <i>AMA 1/16" = 1"</i>					MATERIAL		DRAWN <i>[Signature]</i> CHECKED <i>[Signature]</i> FINAL APPROVAL <i>[Signature]</i>		
DEC. DIM. ± FRAC. DIM. ± ANGULAR DIM. ±			MAXIMUM ALLOWABLE TOLERANCES HAVE BEEN DETERMINED AND ANY DEVIATIONS WILL BE CAUSE FOR REJECTION. REMOVE ALL BURRS AND SHARP EDGES					TYPE & TEMPER HEAT TREAT. SPEC.		ELEC. DES. APP MECH. DES. APP		
								FINISH & SPEC. NO.		PO-204 B		

REQ. PER. UNIT	USED ON			PO-205
	MODEL	ASSY. NO.	DATE	
1	GPT-40K(E)		11-28-60	



GROUP -102 , RADIO SW. CORP.

REQ.	ITEM	PART NO.	DESCRIPTION		SYMBOL					
			THE TECHNICAL MATERIEL CORP.							
			MAMARONECK, NEW YORK							
			DETENT, SPROCKET							
			BRASS							
			MATERIAL							
			1/2 H							
			NICKEL PLATE							
			FINISH & SPEC. NO.	ELEC. DES. APP	MECH. DES. APP					
ISSUE	ITEM	CHANGED FROM	DATE	CH. NO.	DRAFTS	CHECKER	ENG. APP.	DRAWN	CHECKED	FINAL APPROVAL
TOLERANCES			SCALE:					<i>D. J. [Signature]</i>	aa	<i>[Signature]</i>
DEC. DIM. ±			MAXIMUM ALLOWABLE TOLERANCES HAVE BEEN DETERMINED AND ANY DEVIATIONS WILL BE CAUSE FOR REJECTION.							PO-205
FRAC. DIM. ±			REMOVE ALL BURRS AND SHARP EDGES							
ANGULAR DIM. ± 10'										

1.812 REF.
 $\pm .000$
 $-.005$
 $\pm .000$
 $-.002$
 .687 .812
 7/64 R
 13/64 R
 ROLLER, MAT'L- ZYTEL, 101 NCIO NATURAL.
 MAT'L- BRASS, FINISH- BRIGHT NICKEL PLATE .0001, EXCEPT ROLLER

— DETENT ARM ASSY —
 (5220955)

1/16 14 TURNS 1/8 R
 MAT'L .032 DIA.
 STAINLESS STEEL WIRE, NON RUSTING NO FINISH.

— SPRING —
 (513745)

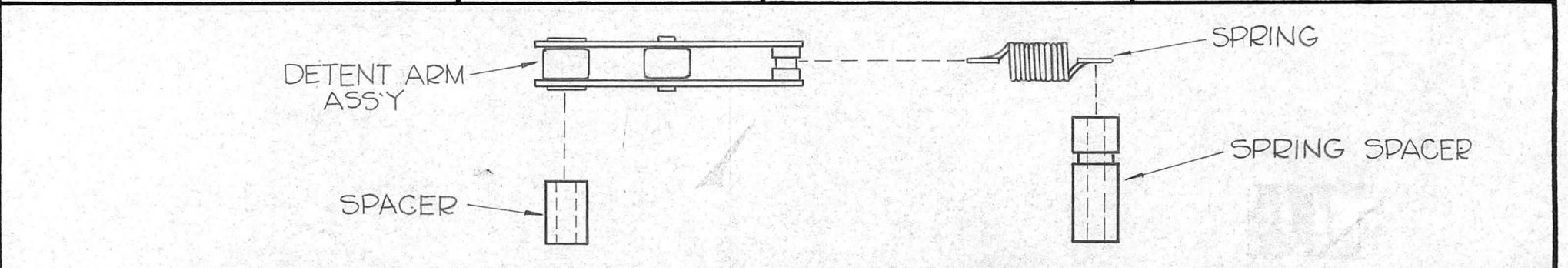
REQ. PER. UNIT	USED ON		
	MODEL	ASS'Y. NO.	DATE
1	CHG-1		4-25-61

5/16 .140
 $\pm .002$
 $-.000$
 .380
 MAT'L- BRASS, FINISH- BRIGHT NICKEL PLATE .0001.

— SPACER —
 (513736 - GROUP 103)

5/16 .140
 $\pm .002$
 $-.000$
 $\pm .005$
 .216
 .750
 $\pm .002$
 .062
 .040
 $\pm .002$
 MAT'L- BRASS, FINISH- BRIGHT NICKEL PLATE .0001.

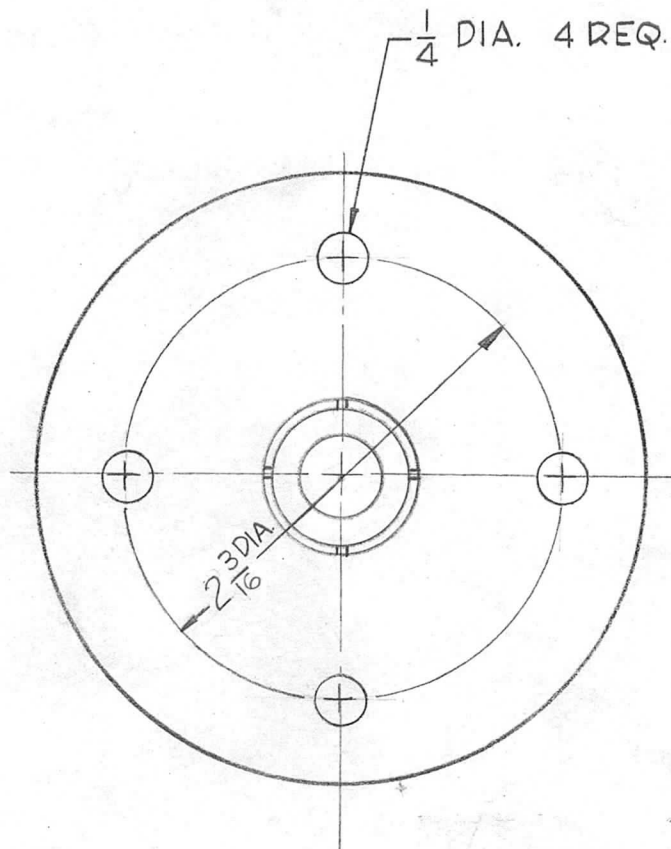
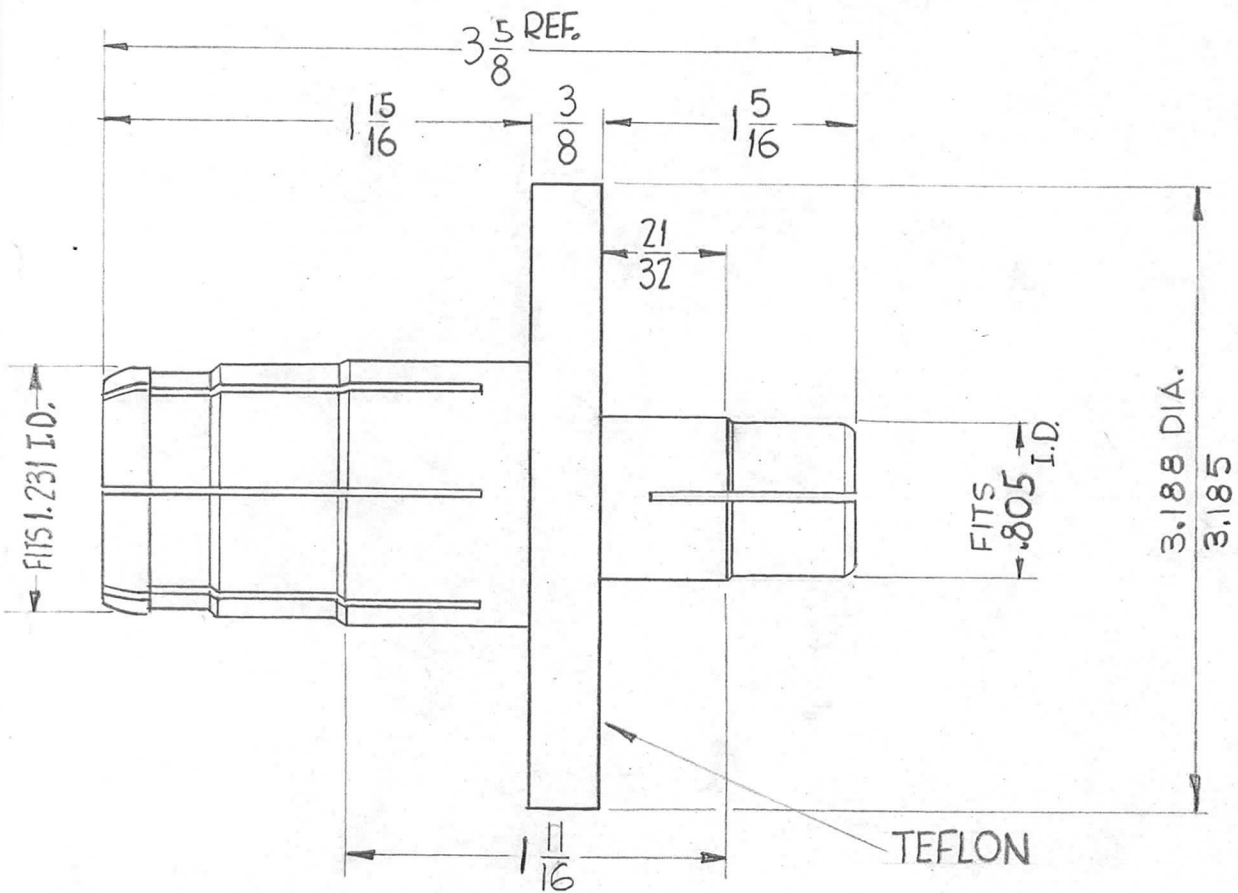
— SPACER, SPRING —
 (513735 GROUP 102)



C	B	A	ISSUE	ITEM	CHANGED FROM	DATE	CH. NO.	DRAFTS	CHECKER	ENG. APP.	REQ. ITEM	PART NO.	DESCRIPTION	SYMBOL		
C					#5 ON SPRING, SPACER & SPACER SPRING REVISED	8/20/65	14657	D.V.V.	JCB	MMH			THE TECHNICAL MATERIEL CORP. MAMARONECK, NEW YORK ASSEMBLY, DETENT ARM	PO 209 C		
B	1			SEE EMN #10922	2/19/64	10922	A.M.	Hde								
A	2			ON SPACER- DIM.318 WAS .428 ON SPACER, SPRING DIM. 750 WAS .860	7-3-63	9400		JCB								
TOLERANCES						SCALE: DO NOT SCALE		5401-113					John C. Biele			
DEC. DIM. ± FRAC. DIM. ± ANGULAR DIM. ±						MAXIMUM ALLOWABLE TOLERANCES HAVE BEEN DETERMINED AND ANY DEVIATIONS WILL BE CAUSE FOR REJECTION. REMOVE ALL BURRS AND SHARP EDGES						TYPE & TEMPER	HEAT TREAT. SPEC.	DRAWN	CHECKED	FINAL APPROVAL
												FINISH & SPEC. NO.		ELEC. DES. APP	MECH. DES. APP	

REQ. PER. UNIT	USED ON			PO-211	C
	MODEL	ASS'Y. NO.	DATE		
1	ACU		5-3-61		

NOTE ~ TO BE SUPPLIED WITH INNER "C" RING SPRING.

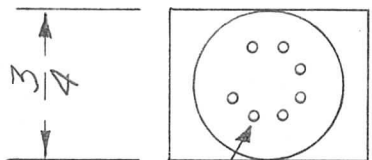
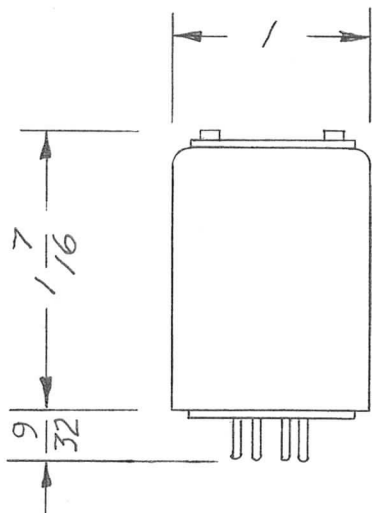


C	4	DIM 1-15/16 WAS 2-3/16	7-13-62	6912	[Signature]	[Signature]	[Signature]
	3	DIM 3-5/8 WAS 3-1/8					
	2	75 Ω WA 70 Ω (TITLE)					
	1	ANDREW PART NO. ADDED					
B	2	1-11/16 Dim. Was 1-3/4	1-24-62	6101	[Signature]	[Signature]	[Signature]
	1	4 1/4 Dia. Holes Added					
A	1	"C" RING Note Added	7/26/61	5333	[Signature]	[Signature]	[Signature]
ISSUE	ITEM	CHANGED FROM	DATE	CH. NO.	DRAFTS	CHECKER	ENG. APP.
TOLERANCES			SCALE: S401-31-25570				
DEC. DIM. ± .005			MAXIMUM ALLOWABLE TOLERANCES HAVE BEEN DETERMINED AND ANY DEVIATIONS WILL BE CAUSE FOR REJECTION. REMOVE ALL BURRS AND SHARP EDGES				
FRAC. DIM. ± 1/64							
ANGULAR DIM. ±							

REQ.	ITEM	PART NO.	DESCRIPTION		SYMBOL
			THE TECHNICAL MATERIEL CORP.		
			MAMARONECK, NEW YORK		
			INNER CONNECTOR, 3-1/8		
			50 TO 75 Ω ADAPTOR		
MATERIAL			DRAWN		FINAL APPROVAL
TYPE & TEMPER			[Signature]		[Signature]
HEAT TREAT. SPEC.			[Signature]		[Signature]
FINISH & SPEC. NO.			ELEC. DES. APP		MECH. DES. APP
			[Signature]		PO-211
					C

STANDARD DRAWING

REQ. PER UNIT	USED ON		PO-214	D
	MODEL	ASS'Y. NO.		
2	SBS-1			



.040 DIA.

TEMPERATURE SETTINGS: 75°C ± 3°

VOLTAGES: 6.3 VOLTS AC OR DC

CURRENT: 1.25 AMPS NOMINAL

OPERATING AMBIENT TEMP RANGE: -55° TO 5°C BELOW NOMINAL SETTING OF OVEN TEMP

NON-OPERATING AMBIENT TEMP RANGE: -70°C TO +100°C

TEMPERATURE STABILITY: ± 2°C

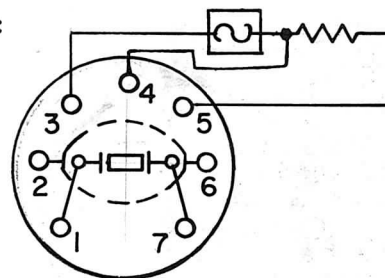
WARM-UP TIME: AS REQUIRED

INTERNAL DIMENSIONS: ACCOMMODATES ONE HC 6/U CRYSTAL HOLDER

VIBRATION: MIL-E-5272C

WEIGHT: 23 GRAMS

MOUNTING: 7 PIN MINIATURE PLUG

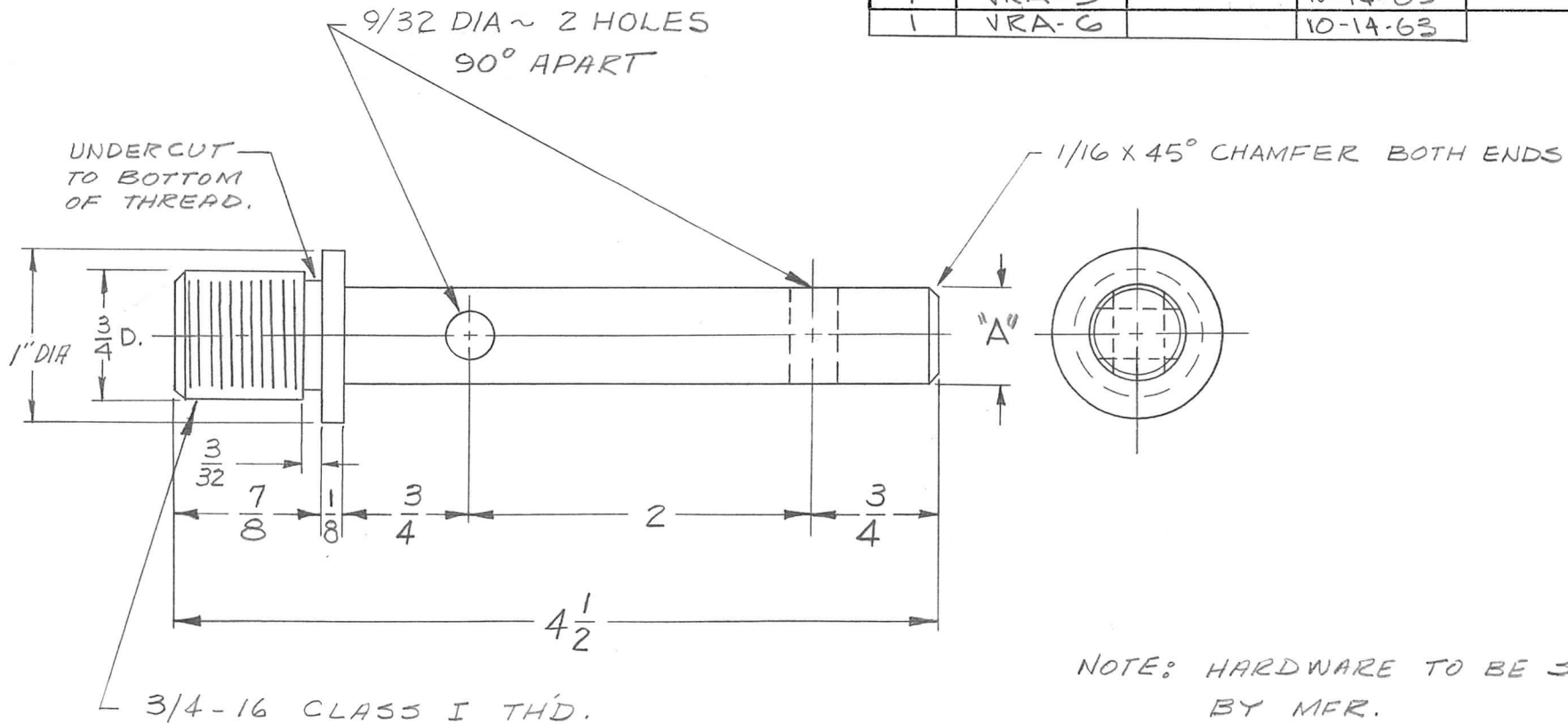


WIRING DIAGRAM

ISSUE	ITEM	CHANGED FROM	DATE	CH. NO.	DRAFTS	CHECKER	ENG. APP.	REQ. ITEM	PART NO.	DESCRIPTION	SYMBOL	
D	1	CONNECTION TO PIN 4 ADDED WORD STANDARD ADDED	1/22/69	10795	DN	at	8/16			TMC INDUSTRIAL CORP. MAMARONECK, NEW YORK	OVEN, XTAL	
C	2	THERMOSTAT SYM CLARIFIED	8-22-62	7098	G.S.	yle	16					
	1	CURRENT-1.25A.NOM ADDED										
B	1	WIRING DIAGRAM NO. REVISED	11-22-61	5944	C.A.							
A	1	WIRING DIAGRAM ADDED	11-15-61	5786	RU							
TOLERANCES			SCALE: S 401-129 (BHC-6U)						wh	ab	FINAL APPROVAL	
DEC. DIM. ± FRAC. DIM. ± ANGULAR DIM. ±			MAXIMUM ALLOWABLE TOLERANCES HAVE BEEN DETERMINED AND ANY DEVIATIONS WILL BE CAUSE FOR REJECTION. REMOVE ALL BURRS AND SHARP EDGES				TYPE & TEMPER	HEAT TREAT. SPEC.	DRAWN	CHECKED	PO-214 D	
							FINISH & SPEC. NO.		ELEC. DES. APP.	MECH. DES. APP.		

REQ. PER UNIT	USED ON		
	MODEL	ASS'Y. NO.	DATE
1	VRA-5		10-14-63
1	VRA-6		10-14-63

PO-216 D



- NOTE: HARDWARE TO BE SUPPLIED BY MFR.
- 2 EA. { 1/4-20 x 1 1/4 HEX. HD. CAP SCR. (STAINLESS)
 1/4-20 HEX NUT. (STAINLESS)
 1/4 SPLIT L'WASHER (STAINLESS)

TMC P/NO	DIMENSION "A"
PO 216	.578 ^{+0.002} _{.000} DIA
PO 216-2	.666 - .670 DIA.

SYM	DESCRIPTION	DATE	CH. NO.	DRAFTS	CHECKER	ENG. APP.	REQ. ITEM	PART NO.	DESCRIPTION	SYMBOL
D	DIM'S 578 ^{+0.002} _{.000} WAS 9/16D.	12-1-62		G.D.L.					THE TECHNICAL MATERIEL CORP. MAMARONECK, NEW YORK POST, ANTENNA	D
C	CHART & "A" DIM. ADD	6-15-63	22046	G.D.L.	JR					
B	IN NOTE 1/4-20 x 1 1/4 HEX. HD. WAS 1/4-20 x 1/4 HEX. HD.	11/20/63	10452	AD	at	WJB				
A	REVISED WITH CHGS.	10/14/63	10191	AD	M/T	WJB				
UNLESS OTHERWISE SPECIFIED DIMENSIONS ARE IN INCHES AND INCLUDE CHEMICALLY APPLIED OR PLATED FINISHES							SCALE FULL		MATERIAL C. D. & ANNEALED	
TOLERANCES DECIMALS .X ± .05 .XX ± .01 .XXX ± .005 FRACTIONS ± 1/64 ANGLES ± 0° 30'							TYPE & TEMPER 3104-PASSIVATE		HEAT TREAT. SPEC. DRAWN CHECKED FINAL APPROVAL	
CODE 3401-135							FINISH & SPEC. NO.		ELEC. DES. APP. MECH. DES. APP.	
									PO-216 D	

THE CONTENTS OF THIS DRAWING ARE THE EXCLUSIVE PROPERTY OF THE TECHNICAL MATERIEL CORP. ITS UNAUTHORIZED USE OR REPRODUCTION IN WHOLE OR IN PART IS STRICTLY FORBIDDEN.

REQ. PER UNIT

1

HNF-1

USED ON

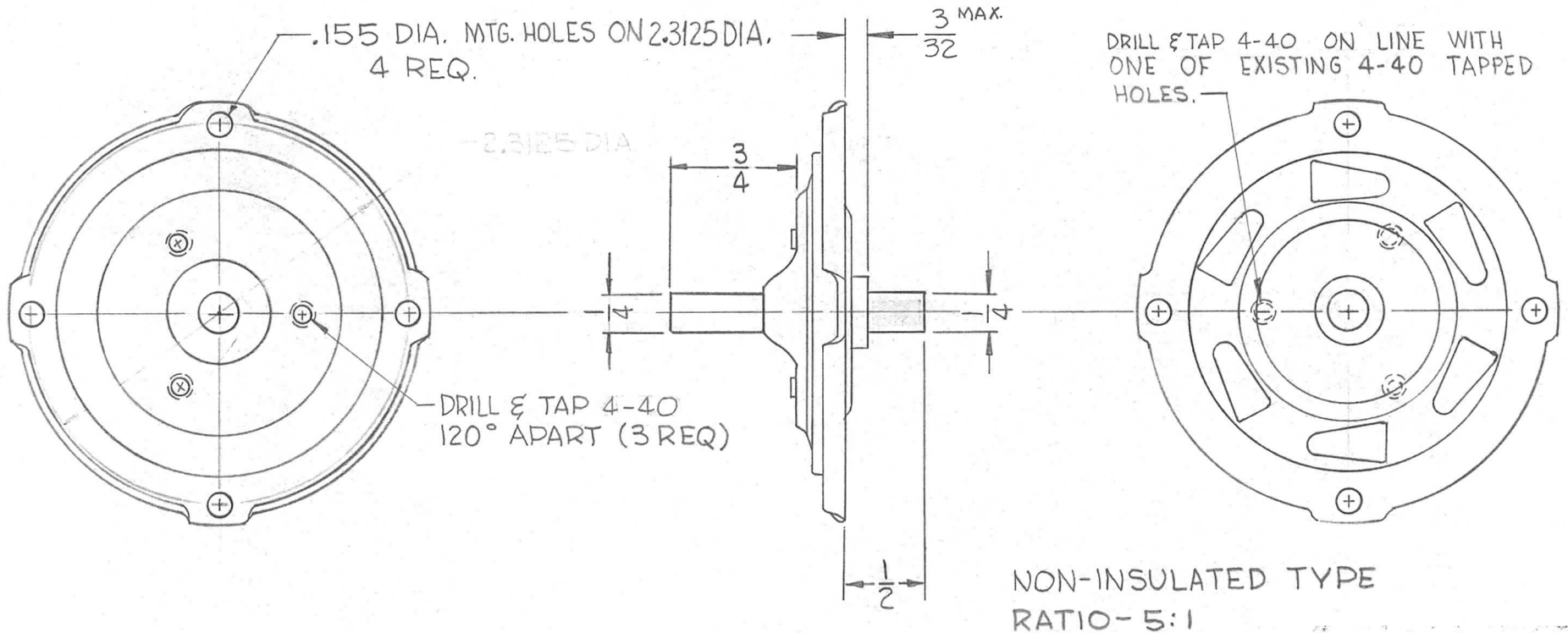
MODEL

ASS'Y. NO.

DATE

3-19-62

PO-229



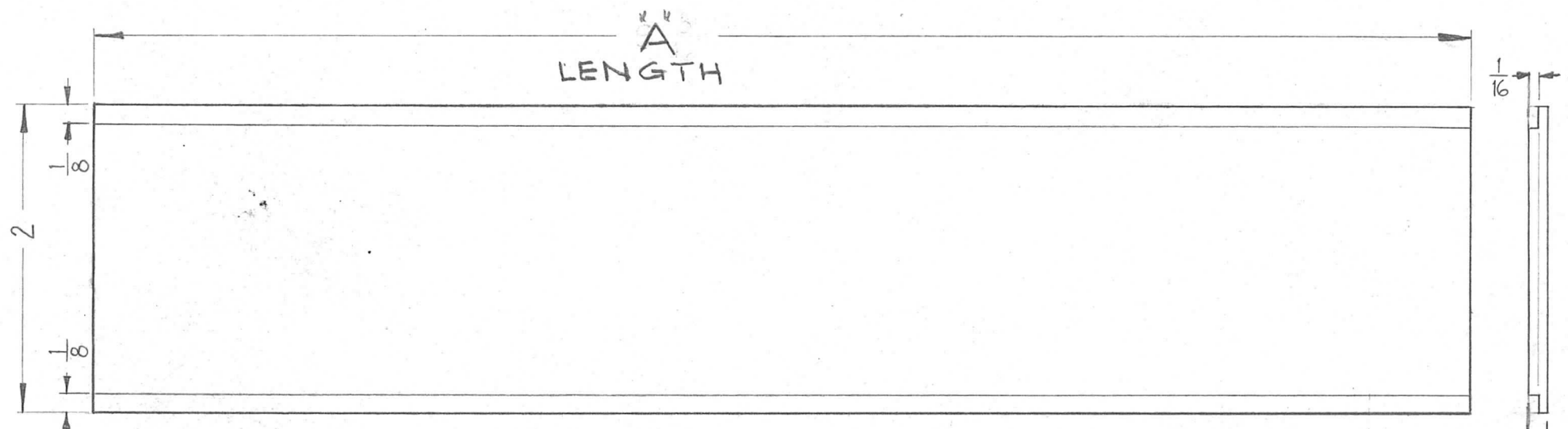
REF-NATIONAL CO. TYPE AVD(MOD.)

REQ.	ITEM	PART NO.	DESCRIPTION				SYMBOL	
			THE TECHNICAL MATERIEL CORP. MAMARONECK, NEW YORK					
			STOCK SIZE					
			DRIVE, VERNIER, 5:1 RATIO					
			MATERIAL					
SYM	DESCRIPTION	DATE	CH. NO.	DRAFTS	CHECKER	ENG. APP.		
UNLESS OTHERWISE SPECIFIED: DIMENSIONS ARE IN INCHES TOLERANCES ON FRAC. ± 1/64 DEC. ± .005 ANGLES ± 1/2°		SCALE: MAXIMUM ALLOWABLE TOLERANCES HAVE BEEN DETERMINED AND ANY DEVIATIONS WILL BE CAUSE FOR REJECTION. REMOVE ALL BURRS AND SHARP EDGES						
		TYPE & TEMPER		HEAT TREAT. SPEC.		DRAWN	CHECKED	FINAL APPROVAL
		FINISH & SPEC. NO.		ELEC. DES. APP.		MECH. DES. APP.		PO-229

THE CONTENTS OF THIS DRAWING ARE THE EXCLUSIVE PROPERTY OF THE TECHNICAL MATERIEL CORP. ITS UNAUTHORIZED USE OR REPRODUCTION IN WHOLE OR IN PART IS STRICTLY FORBIDDEN.

REQ. PER UNIT	USED ON			PO-233	B
	MODEL	ASS'Y. NO.	DATE		
1	HFS-1	A-3054-1	8-15-62		
1	LFS-1	A-3054-2			

TMC PART NO	LENGTH "A"
PO-233-1	9 3/16
PO-233-2	7 5/8

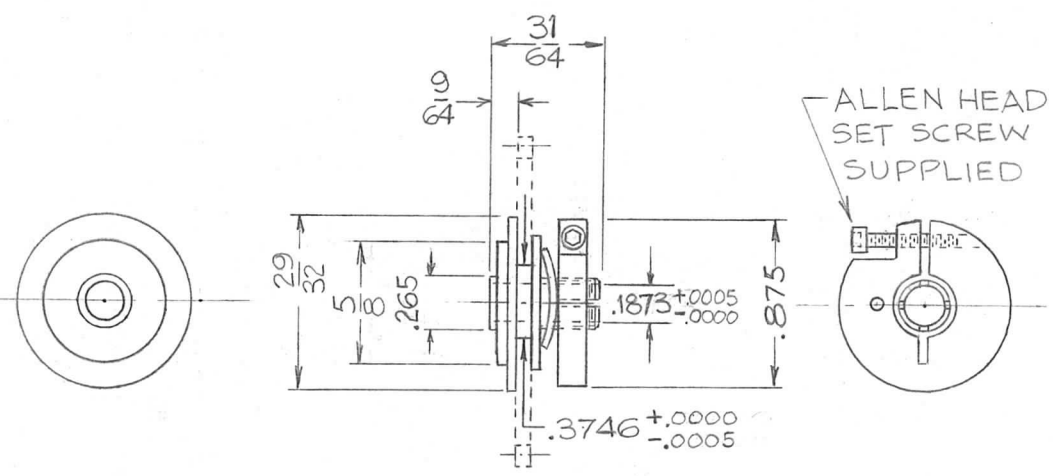


MATERIAL ~ 1/8 THK. PLEXI-GLASS.
 COLOR ~ RUBY RED.
 MFR'D. IN ACCORDANCE WITH
 MIL-P-5425B, TYPE 2444.

SYM	DESCRIPTION	DATE	CH. NO.	DRAFTS	CHECKER	ENG. APP.	REQ. ITEM	PART NO.	STRUMMER DESCRIPTION	SYMBOL		
B	ON CHART TMC PART No. PO-233-1, PO-233-2 WERE PO-223-1 & -2	10-25-63	10281	G.D.L.	MIT	[Signature]	SEE NOTE		THE TECHNICAL MATERIEL CORP. MAMARONECK, NEW YORK			
A	PO-233-1 WAS PO-233 PO-233-2 & CHART ADDED	9-10-63	9908	[Signature]	[Signature]	[Signature]	SEE NOTE		WINDOW, OBSERVATION			
							MATERIAL					
	UNLESS OTHERWISE SPECIFIED: DIMENSIONS ARE IN INCHES TOLERANCES ON FRAC. ± 1/64 DEC. ± .005 ANGLES ± 1/2°						SCALE: DO NOT SCALE	SEE NOTE	SEE NOTE	M.U.F.	[Signature]	BP
							MAXIMUM ALLOWABLE TOLERANCES HAVE BEEN DETERMINED AND ANY DEVIATIONS WILL BE CAUSE FOR REJECTION. REMOVE ALL BURRS AND SHARP EDGES	TYPE & TEMPER	HEATTREAT. SPEC.	DRAWN	CHECKED	FINAL APPROVAL
							SEE NOTE	SEE NOTE		[Signature]	[Signature]	PO-233
							FINISH & SPEC. NO.		ELEC. DES. APP.	MECH. DES. APP.		B

THE CONTENTS OF THIS DRAWING ARE THE EXCLUSIVE PROPERTY OF THE TECHNICAL MATERIEL CORP. ITS UNAUTHORIZED USE OR REPRODUCTION IN WHOLE OR IN PART IS STRICTLY FORBIDDEN.

REQ. PER UNIT 2	USED ON		PO-235
	MODEL	ASS'Y. NO.	
	GPR-92	DATE 6-16-62	



REF: STERLING INSTRUMENT CAT. NO. G150-3

REQ.	ITEM	PART NO.	GELLMAN DESCRIPTION		SYMBOL
			THE TECHNICAL MATERIEL CORP.		
			MAMARONECK, NEW YORK		
			CLUTCH, SLIP		
			STAINLESS STEEL		
			MATERIAL		
			#303	V.R.R.	
			TYPE & TEMPER	CHECKED	FINAL APPROVAL
			S-104 PASSIVATE		
			FINISH & SPEC. NO.	ELEC. DES. APP.	MECH. DES. APP.
					PO-235

UNLESS OTHERWISE SPECIFIED:
DIMENSIONS ARE IN INCHES
TOLERANCES ON
FRAC. ± 1/64 DEC. ± .005 ANGLES ± 1/2°

SCALE:
MAXIMUM ALLOWABLE TOLERANCES HAVE BEEN DETERMINED AND ANY DEVIATIONS WILL BE CAUSE FOR REJECTION.
REMOVE ALL BURRS AND SHARP EDGES

THE CONTENTS OF THIS DRAWING ARE THE EXCLUSIVE PROPERTY OF THE TECHNICAL MATERIEL CORP. ITS UNAUTHORIZED USE OR REPRODUCTION IN WHOLE OR IN PART IS STRICTLY FORBIDDEN.

REQ. PER UNIT

USED ON

MODEL

ASS'Y. NO.

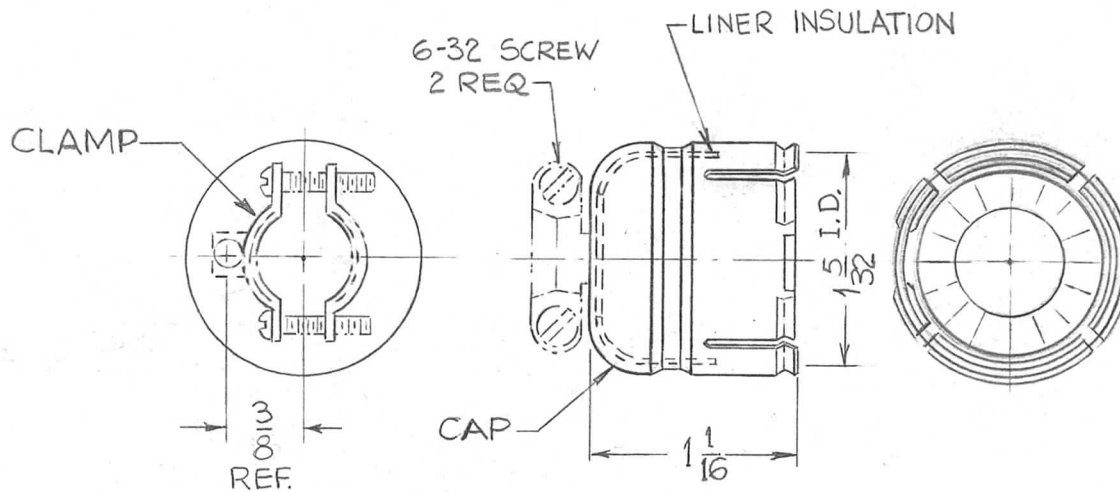
DATE

6-27-62

PO-236



TMC PART NO.	MFG. PART NO.	TYPE
PO-236-1	# 3-24	W/CLAMP
PO-236-2	# 3-10	W/O CLAMP



DIMENSIONS FOR REFERENCE

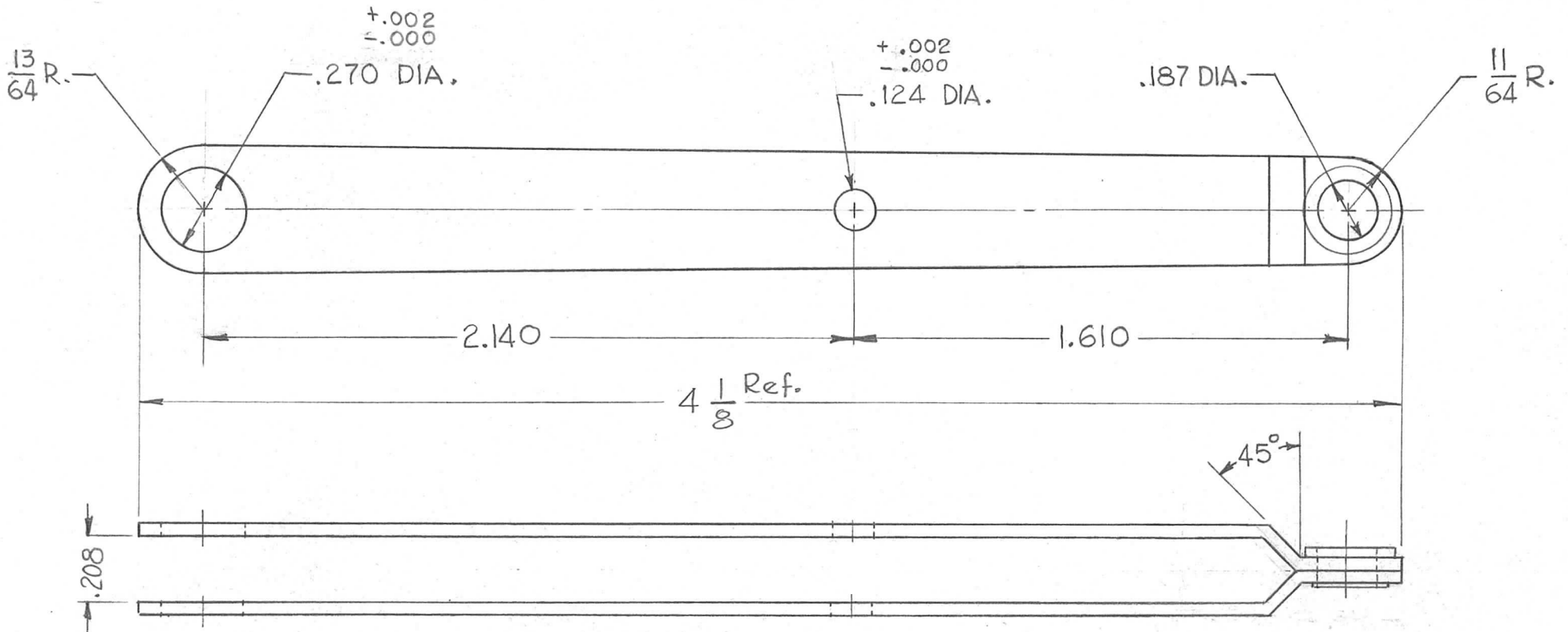
NOTE:- TO BE COMPLETELY ASSEMBLED BY MANUFACTURER

REQ.	ITEM	PART NO.	STRUMER DESCRIPTION	SYMBOL							
		///	THE TECHNICAL MATERIEL CORP. MAMARONECK, NEW YORK								
		///	CAP, PLUG								
		///									
Ø	ORIGINAL RELEASE	9/26/69	⊙								
SYM	DESCRIPTION	DATE	CH. NO.	DRAFTS	CHECKER	ENG. APP.					
UNLESS OTHERWISE SPECIFIED:		SCALE: 5401-71									
DIMENSIONS ARE IN INCHES		MAXIMUM ALLOWABLE TOLERANCES HAVE BEEN DETERMINED AND ANY DEVIATIONS WILL BE CAUSE FOR REJECTION.									
TOLERANCES ON		REMOVE ALL BURRS AND SHARP EDGES									
FRAC. ± 1/64 DEC. ± .005 ANGLES ± 1/2°											
		TYPE & TEMPER		HEATTREAT. SPEC.		DRAWN		CHECKED		FINAL APPROVAL	
		BLACK JAPPANED									
		FINISH & SPEC. NO.		ELEC. DES. APP.		MECH. DES. APP.		PO-236		Ø	

THE CONTENTS OF THIS DRAWING ARE THE EXCLUSIVE PROPERTY OF THE TECHNICAL MATERIEL CORP. ITS UNAUTHORIZED USE OR REPRODUCTION IN WHOLE OR IN PART IS STRICTLY FORBIDDEN.

REQ. PER UNIT	USED ON	
	MODEL	ASS'Y. NO.
1	HFR-1	DATE
		7-26-62

PO-241



REF: RADIO SWITCH CORPORATION (S-20451)

							REQ. ITEM	PART NO.	KRUY	DESCRIPTION	SYMBOL	
								.043 THK	THE TECHNICAL MATERIEL CORP.			
								STOCK SIZE	MAMARONECK, NEW YORK			
								STEEL, STAINLESS	ARM, DETENT			
								MATERIAL				
SYM	DESCRIPTION	DATE	CH. NO.	DRAFTS	CHECKER	ENG. APP.	#303		G.D.L	HQ	BP	
UNLESS OTHERWISE SPECIFIED:		SCALE: DO NOT SCALE										
DIMENSIONS ARE IN INCHES		MAXIMUM ALLOWABLE TOLERANCES HAVE BEEN DETERMINED AND ANY DEVIATIONS WILL BE CAUSE FOR REJECTION.										
TOLERANCES ON		REMOVE ALL BURRS AND SHARP EDGES										
FRAC. ± 1/64 DEC. ± .005 ANGLES ± 1/2°							S104 PASSIVATE					
							FINISH & SPEC. NO.		ELEC. DES. APP.	MECH. DES. APP.	PO-241	

THE CONTENTS OF THIS DRAWING ARE THE EXCLUSIVE PROPERTY OF THE TECHNICAL MATERIEL CORP. ITS UNAUTHORIZED USE OR REPRODUCTION IN WHOLE OR IN PART IS STRICTLY FORBIDDEN.

REQ. PER UNIT

USED ON

MODEL

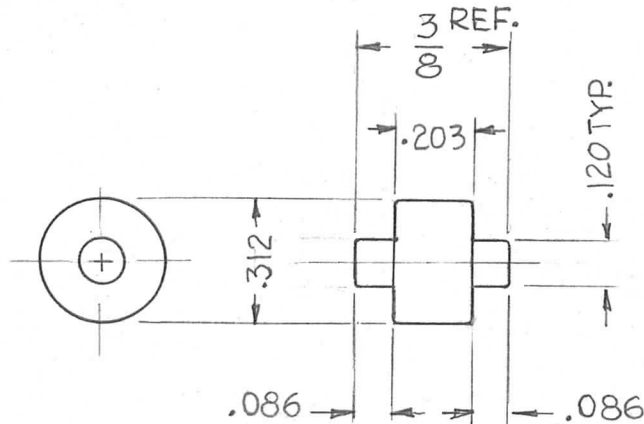
ASS'Y. NO.

DATE

#FR-1

7-26-62

PO-243



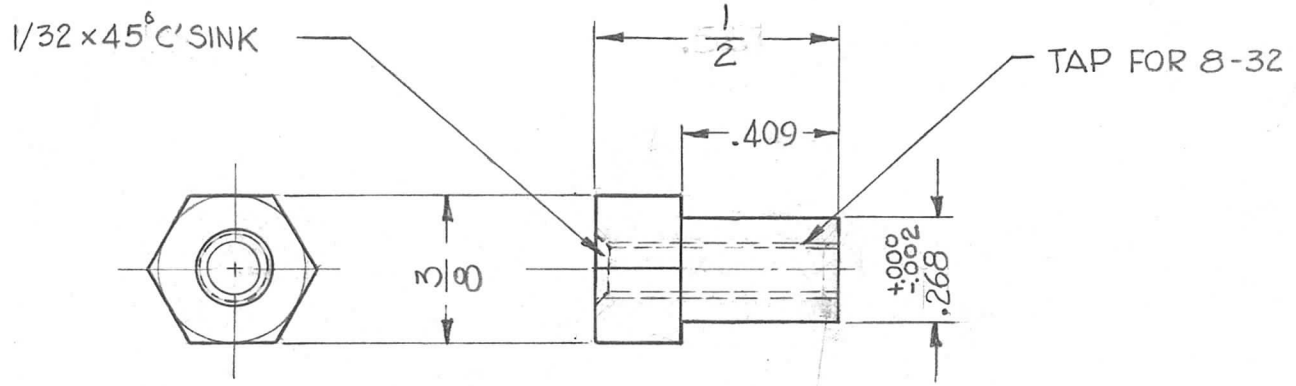
REF: RADIO SWITCH CORPORATION (S-13387)

REQ.	ITEM	PART NO.	DESCRIPTION	SYMBOL							
			KRUY								
			THE TECHNICAL MATERIEL CORP.								
			MAMARONECK, NEW YORK								
			STAINLESS STEEL	ROLLER, DETENT							
			MATERIAL								
SYM	DESCRIPTION	DATE	CH. NO.	DRAFTS	CHECKER	ENG. APP.	#303	G.D.L.	HDe	BP	
UNLESS OTHERWISE SPECIFIED:		SCALE: DO NOT SCALE									
DIMENSIONS ARE IN INCHES		MAXIMUM ALLOWABLE TOLERANCES HAVE BEEN DETERMINED AND ANY DEVIATIONS WILL BE CAUSE FOR REJECTION.									
TOLERANCES ON		REMOVE ALL BURRS AND SHARP EDGES						5104 PASSIVATE		TAK	
FRAC. ± 1/64 DEC. ± .005 ANGLES ± 1/2°								FINISH & SPEC. NO.	ELEC. DES. APP.	MECH. DES. APP.	PO-243

THE CONTENTS OF THIS DRAWING ARE THE EXCLUSIVE PROPERTY OF THE TECHNICAL MATERIEL CORP. ITS UNAUTHORIZED USE OR REPRODUCTION IN WHOLE OR IN PART IS STRICTLY FORBIDDEN.

REQ. PER UNIT	USED ON		
	MODEL	ASS'Y. NO.	DATE
1	HFR-1		7-26-62

PO-245 A



REF. RADIO SWITCH CORPORATION (S-20387) MODIFIED

							REQ.	ITEM	PART NO.	KRUY	DESCRIPTION	SYMBOL	
											THE TECHNICAL MATERIEL CORP. MAMARONECK, NEW YORK		
									STAINLESS		SPACER, THREADED		
A	1/2 DIM. WAS .561 (SIDE)	12-7-62	7825										
SYM	DESCRIPTION	DATE	CH. NO.	DRAFTS	CHECKER	ENG. APP.	MATERIAL						
UNLESS OTHERWISE SPECIFIED: DIMENSIONS ARE IN INCHES		SCALE: DO NOT SCALE					STAINLESS		G.D.L	JDE	AP		
TOLERANCES ON FRAC. ± 1/64 DEC. ± .005 ANGLES ± 1/2°		MAXIMUM ALLOWABLE TOLERANCES HAVE BEEN DETERMINED AND ANY DEVIATIONS WILL BE CAUSE FOR REJECTION. REMOVE ALL BURRS AND SHARP EDGES					TYPE & TEMPER 3104 PASSIVATE		HEATTREAT. SPEC.	DRAWN	CHECKED	FINAL APPROVAL	
						FINISH & SPEC. NO.		ELEC. DES. APP.	MECH. DES. APP.	TAK	PO-245	A	

THE CONTENTS OF THIS DRAWING ARE THE EXCLUSIVE PROPERTY OF THE TECHNICAL MATERIEL CORP. ITS UNAUTHORIZED USE OR REPRODUCTION IN WHOLE OR IN PART IS STRICTLY FORBIDDEN.

REQ. PER UNIT

AX-354

USED ON

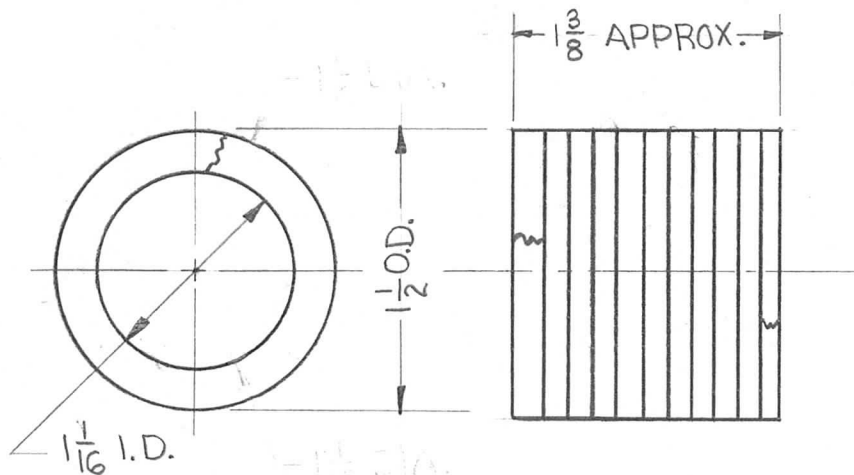
MODEL

ASS'Y. NO.

DATE

6-12-62

PO-246

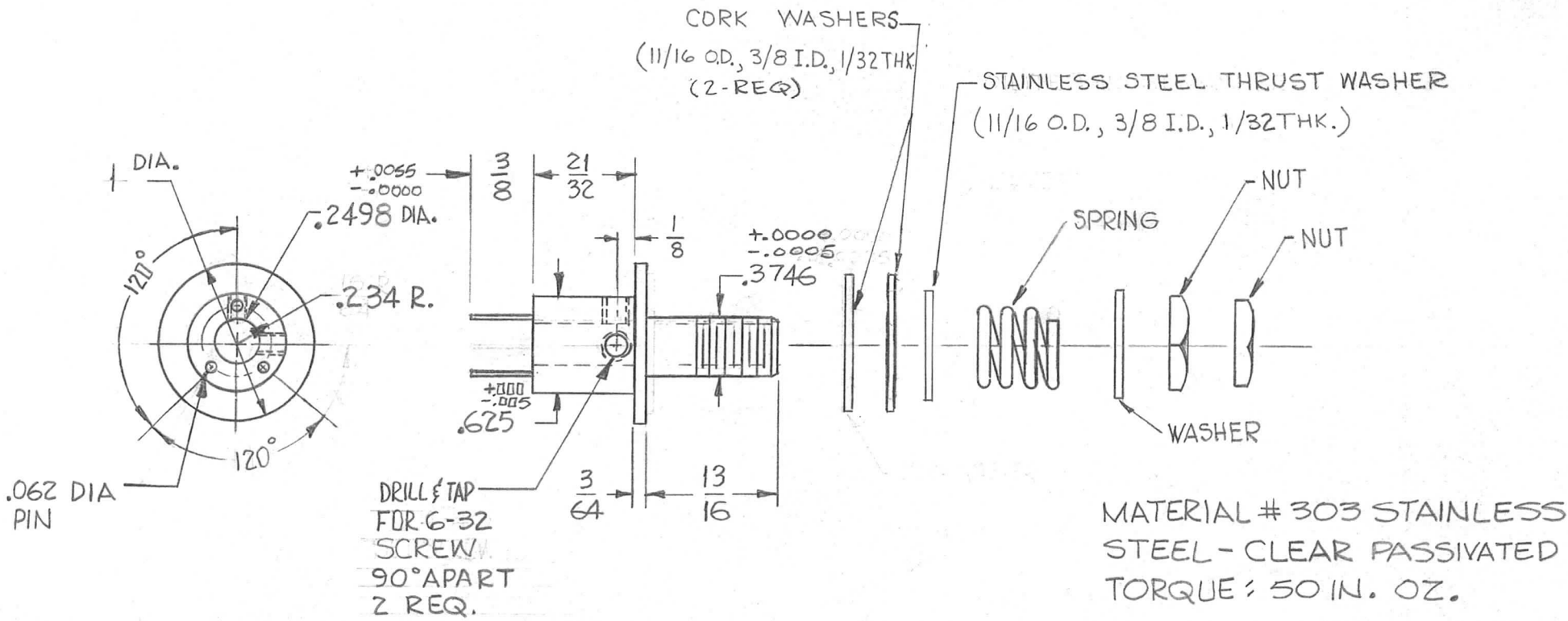


							REQ.	ITEM	PART NO.	PRITCHARD	DESCRIPTION	SYMBOL	
									7/32		THE TECHNICAL MATERIEL CORP.		
									STOCK SIZE		MAMARONECK, NEW YORK		
									FLAX.		PACKING,		
									MATERIAL		STUFFING TUBE		
SYM	DESCRIPTION	DATE	CH. NO.	DRAFTS	CHECKER	ENG. APP.				R. Lanchin	J. We	BF	
UNLESS OTHERWISE SPECIFIED: DIMENSIONS ARE IN INCHES TOLERANCES ON FRAC. ± 1/64 DEC. ± .005 ANGLES ± 1/2°		SCALE: DO NOT SCALE					TYPE & TEMPER		HEAT TREAT. SPEC.	DRAWN	CHECKED	FINAL APPROVAL	
		MAXIMUM ALLOWABLE TOLERANCES HAVE BEEN DETERMINED AND ANY DEVIATIONS WILL BE CAUSE FOR REJECTION. REMOVE ALL BURRS AND SHARP EDGES										PO-246	
							FINISH & SPEC. NO.		ELEC. DES. APP.	MECH. DES. APP.			

THE CONTENTS OF THIS DRAWING ARE THE EXCLUSIVE PROPERTY OF THE TECHNICAL MATERIEL CORP. ITS UNAUTHORIZED USE OR REPRODUCTION IN WHOLE OR IN PART IS STRICTLY FORBIDDEN.

REQ. PER UNIT	USED ON	
	MODEL	ASS'Y. NO.
1	HFR-1X/T	9-24-62

PO-247 C

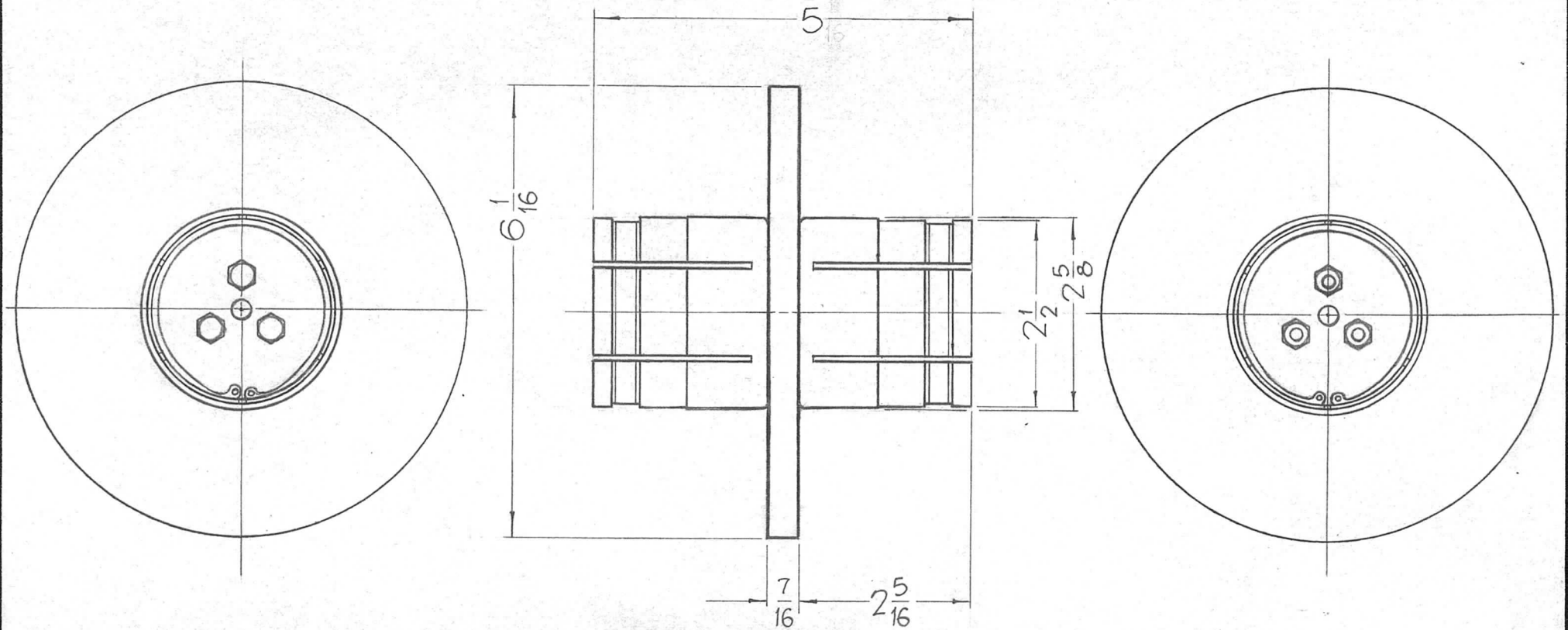


MODIFIED AS PER TMC REQUIREMENTS
STERLING (MMZ-4 MODIFIED PER TMC)

SYM	DESCRIPTION	DATE	CH. NO.	DRAFTS	CHECKER	ENG. APP.	REQ. ITEM	PART NO.	DESCRIPTION	SYMBOL	
C	STAINLESS STEEL WASHER WAS OILITE; THICKNESS WAS 3/16	1-10-63	8016						THE TECHNICAL MATERIEL CORP. MAMARONECK, NEW YORK CLUTCH, SLIP BAND # 7		
B	6-32 TAPPED HOLE WAS 4-40 TAP.	12-7-62	7794				STOCK SIZE				
A	OILITE THRUST WASHER ADDED CORK WASHER WAS WASHER	7-24-62	6952								
							MATERIAL				
UNLESS OTHERWISE SPECIFIED:		SCALE: $1/2" = 1"$									
DIMENSIONS ARE IN INCHES		MAXIMUM ALLOWABLE TOLERANCES HAVE BEEN DETERMINED AND ANY DEVIATIONS WILL BE CAUSE FOR REJECTION. REMOVE ALL BURRS AND SHARP EDGES									
TOLERANCES ON											
FRAC. $\pm 1/64$ DEC. $\pm .005$ ANGLES $\pm 1/2^\circ$											
							FINISH & SPEC. NO.	ELEC. DES. APP.	MECH. DES. APP.	PO-247 C	

THE CONTENTS OF THIS DRAWING ARE THE EXCLUSIVE PROPERTY OF THE TECHNICAL MATERIEL CORP. ITS UNAUTHORIZED USE FOR REPRODUCTION IN WHOLE OR IN PART IS STRICTLY FORBIDDEN.

REQ. PER UNIT	USED ON			PO-255	O
	MODEL	ASS'Y. NO.	DATE		
2	GPT-200K	AX-397	11-13-63		



PART OF THE NO. 20-... 9

REQ.	ITEM	PART NO.	F. BUDETTI	DESCRIPTION	SYMBOL
				THE TECHNICAL MATERIEL CORP. MAMARONECK, NEW YORK	
		STOCK SIZE		CONNECTOR, R.F. TRANSMISSION	
		MATERIAL		LINE 6-1/8	
			John C Biele	aa	RAT
		TYPE & TEMPER		DRAWN	CHECKED
		HEAT TREAT. SPEC.			FINAL APPROVAL
				DB	ae 4/13/64
		FINISH & SPEC. NO.		ELEC. DES. APP.	MECH. DES. APP.
					PO-255 O

UNLESS OTHERWISE SPECIFIED DIMENSIONS ARE IN INCHES AND INCLUDE CHEMICALLY APPLIED OR PLATED FINISHES	SCALE 1/2" = 1"
DECIMALS .X ± .05 .XX ± .01 .XXX ± .005	FRACTIONS ± 1/64 ANGLES ± 0° 30'
TOLERANCES	CODE C
	S401-276 (#18902)

THE CONTENTS OF THIS DRAWING ARE THE EXCLUSIVE PROPERTY OF THE TECHNICAL MATERIEL CORP. ITS UNAUTHORIZED USE FOR REPRODUCTION IN WHOLE OR IN PART IS STRICTLY FORBIDDEN.

REQ. PER UNIT

USED ON

MODEL

ASS'Y. NO.

DATE

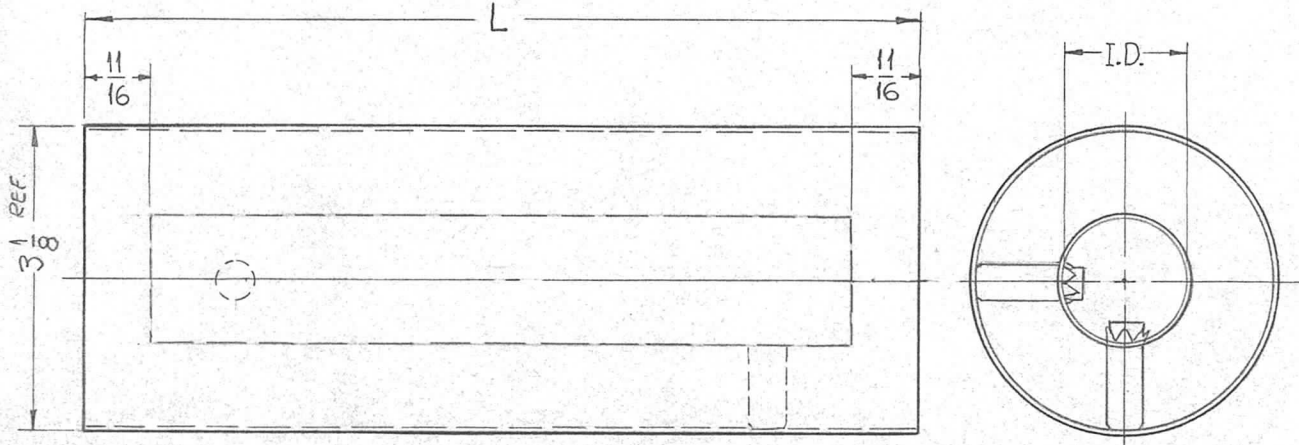
GPT-200K

AX-392

5-28-63

PO-256

0



PO-256-50-L
 TMC NO. NOMINAL LENGTH IN
 IMPEDANCE INCHES

TMC NO.	IMPEDANCE	I.D.
PO-256-50	50	1.231
PO-256-70	70	.805

REQ.	ITEM	PART NO.	F. BUDETTI	DESCRIPTION	SYMBOL
				THE TECHNICAL MATERIEL CORP. MAMARONECK, NEW YORK	
				LINE, RF TRANSMISSION	
				3-1/8 RIGID UNFLANGED	
				COPPER	
				MATERIAL	
				SRG	
				DRAWN	
				CHECKED	
				FINAL APPROVAL	
				PO-256	0
				ELEC. DES. APP.	
				MECH. DES. APP.	
				FINISH & SPEC. NO.	

UNLESS OTHERWISE SPECIFIED DIMENSIONS ARE IN INCHES AND INCLUDE CHEMICALLY APPLIED OR PLATED FINISHES	SCALE				
DECIMALS .X ± .05 .XX ± .01 .XXX ± .005	FRACTIONS ± 1/64 ANGLES ± 0° 30'	CODE	S401-31		
TOLERANCES					

THE CONTENTS OF THIS DRAWING ARE THE EXCLUSIVE PROPERTY OF THE TECHNICAL MATERIEL CORP. ITS UNAUTHORIZED USE OR REPRODUCTION IN WHOLE OR IN PART IS STRICTLY FORBIDDEN.

REQ. PER UNIT

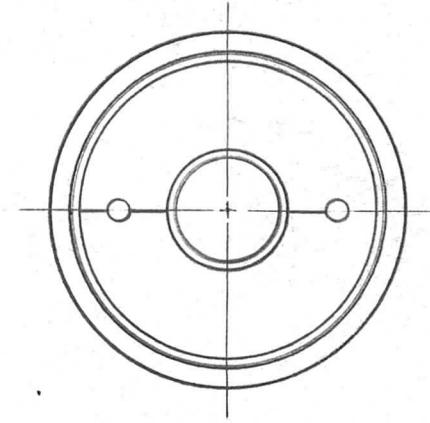
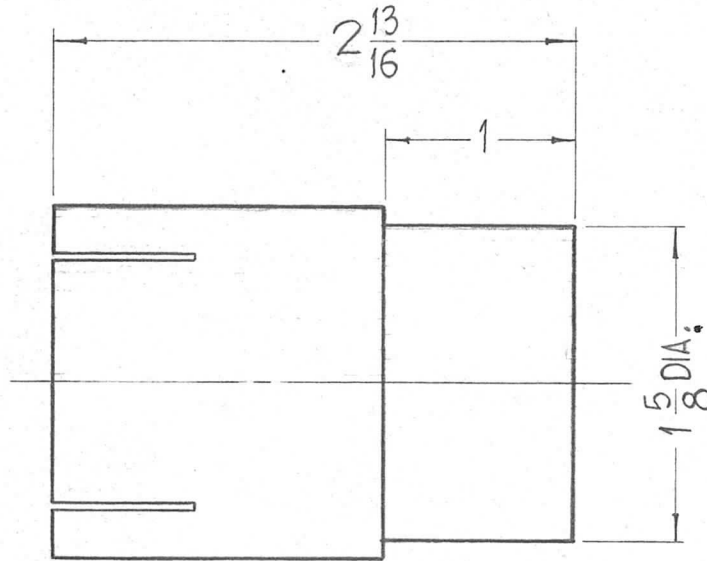
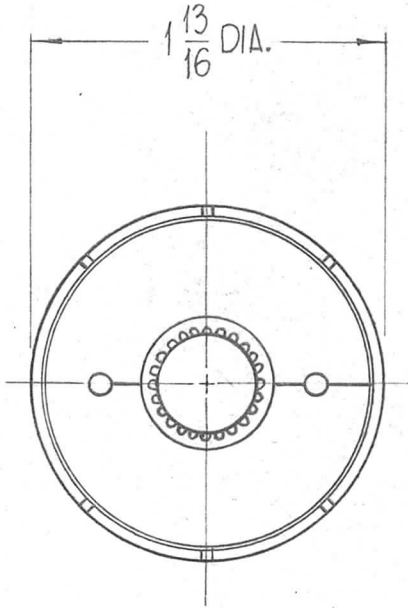
MODEL

USED ON

ASS'Y. NO.

DATE

PO-257

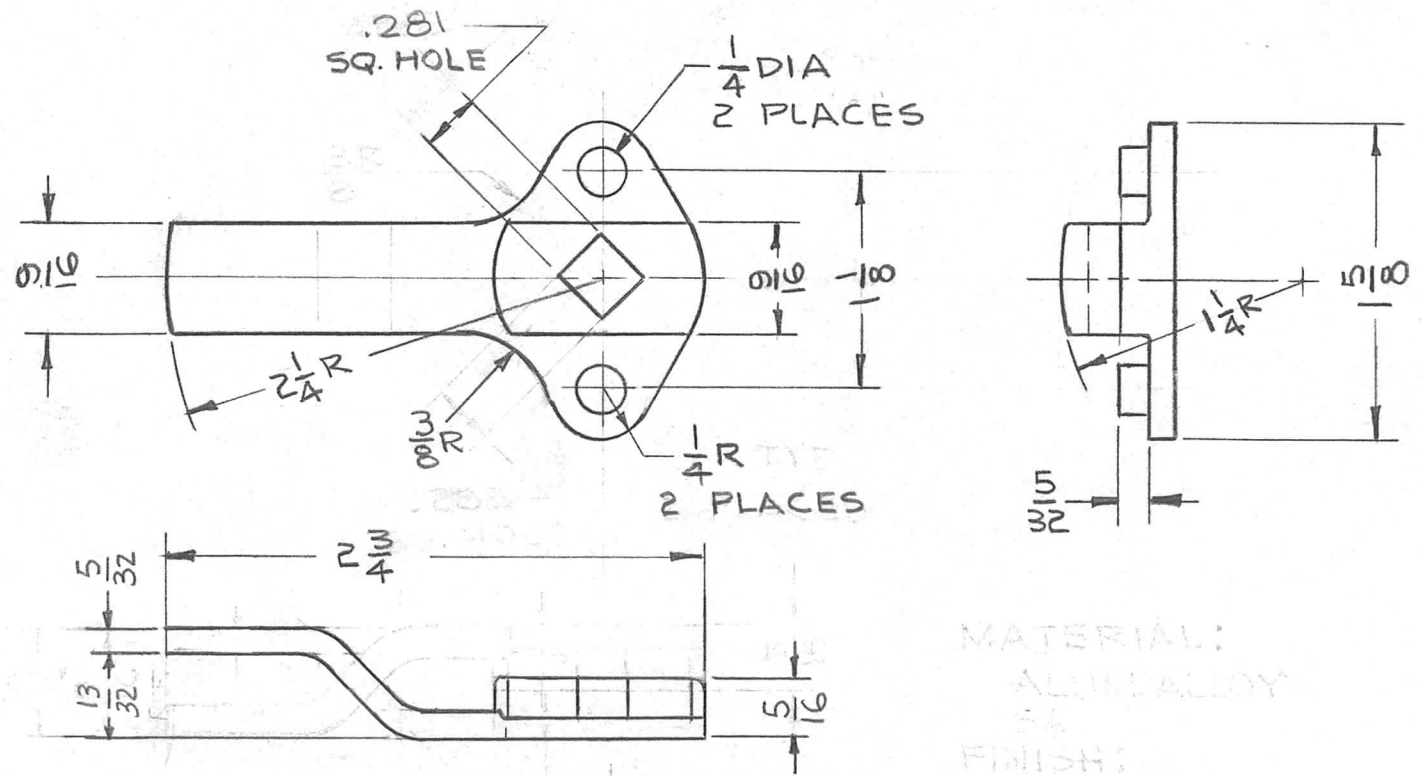


REF JENNINGS RDS

						REQ.	ITEM	PART NO.	DESCRIPTION	SYMBOL	
									THE TECHNICAL MATERIEL CORP. MAMARONECK, NEW YORK SLEEVE ADAPTOR, 1-5/8"		
						STOCK SIZE					
O ORIGINAL RELEASE FOR PRODUCTION						5-27-64	O	A.M.			
SYM	DESCRIPTION	DATE	CH. NO.	DRAFTS	CHECKER	ENG. APP.	MATERIAL				
UNLESS OTHERWISE SPECIFIED:		SCALE: S401-48 (RC)							John C. Biele	aa	RAC
DIMENSIONS ARE IN INCHES		MAXIMUM ALLOWABLE TOLERANCES HAVE BEEN DETERMINED AND ANY DEVIATIONS WILL BE CAUSE FOR REJECTION. REMOVE ALL BURRS AND SHARP EDGES					TYPE & TEMPER	HEATTREAT. SPEC.	DRAWN	CHECKED	FINAL APPROVAL
TOLERANCES ON											
FRAC. ± 1/64 DEC. ± .005 ANGLES ± 1/2°							FINISH & SPEC. NO.		ELEC. DES. APP.	MECH. DES. APP.	PO-257 O

THE CONTENTS OF THIS DRAWING ARE THE EXCLUSIVE PROPERTY OF THE TECHNICAL MATERIEL CORP. ITS UNAUTHORIZED USE FOR REPRODUCTION IN WHOLE OR IN PART IS STRICTLY FORBIDDEN.

REQ. PER UNIT	USED ON			PO 260	Ø
	MODEL	ASS'Y. NO.	DATE		
1	RAK 21	MS 3099	9-30-65		



						REQ. ITEM	PART NO.	DESCRIPTION	SYMBOL		
								THE TECHNICAL MATERIEL CORP. MAMARONECK, NEW YORK			
							STOCK SIZE	CAM, LOCK			
Ø	ORIGINAL RELEASE	10/5/65	Ø				BRONZE CASTING				
SYM	DESCRIPTION	DATE	CH. NO.	DRAFTS	CHECKER	ENG. APP.	MATERIAL				
UNLESS OTHERWISE SPECIFIED DIMENSIONS ARE IN INCHES AND INCLUDE CHEMICALLY APPLIED OR PLATED FINISHES		SCALE		1:1				BANOVIC	10/5/65		
DECIMALS .X ± .05 .XX ± .01 .XXX ± .005	TOLERANCES	FRACTIONS ± 1/64 ANGLES ± 0° 30'	CODE	5401-189 (CORBIN 02505 1/2)		CADMIUM PLATE	TYPE & TEMPER	HEAT TREAT. SPEC.	DRAWN	CHECKED	FINAL APPROVAL
						FINISH & SPEC. NO.	ELEC. DES. APP.		MECH. DES. APP.		
								PO 260		Ø	

THE CONTENTS OF THIS DRAWING ARE THE EXCLUSIVE PROPERTY OF THE TECHNICAL MATERIEL CORP. ITS UNAUTHORIZED USE FOR REPRODUCTION IN WHOLE OR IN PART IS STRICTLY FORBIDDEN.

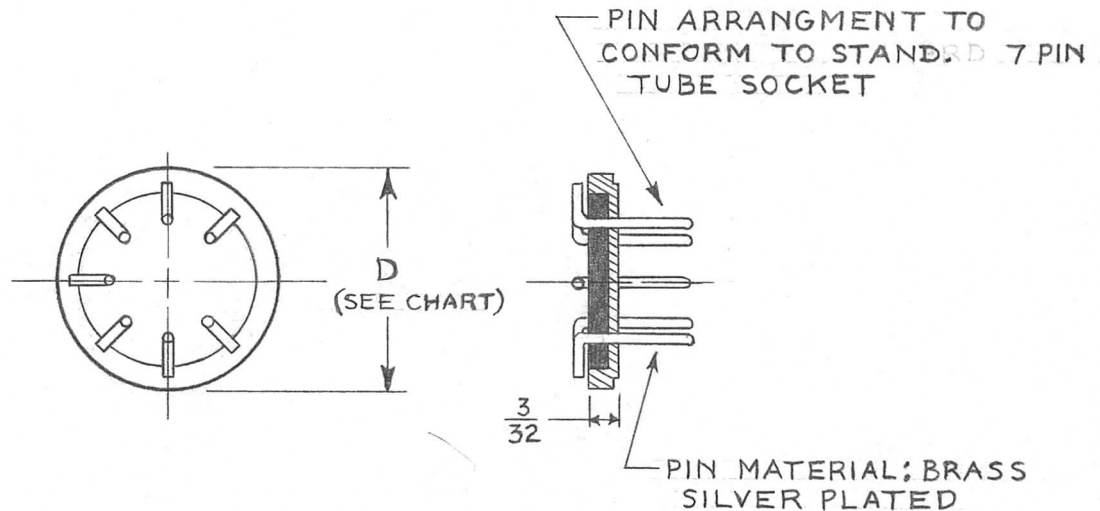
REQ. PER UNIT	USED ON	
	MODEL	DATE
1	TRX-1	2-27-63

PO-261

TMC PART NO.	MFGR PART NO.	D	COLOR
PO-261-1	E1041-S2	.700	BLACK

SPECIFICATIONS

ELECTRICAL;
I. TEMP. RANGE; CONTINUOUS OPERATION UP TO 400°F.



MATING CASE: TMC P/N BX-204

REF: J. WALDMAN & SONS

REQ.	ITEM	PART NO.	J. STRUMER DESCRIPTION				SYMBOL		
		#	THE TECHNICAL MATERIEL CORP. MAMARONECK, NEW YORK						
		STOCK SIZE	HEADER						
		EPOXY #105							
		MATERIAL							
SYM	DESCRIPTION	DATE	CH. NO.	DRAFTS	CHECKER	ENG. APP.			
UNLESS OTHERWISE SPECIFIED DIMENSIONS ARE IN INCHES AND INCLUDE CHEMICALLY APPLIED OR PLATED FINISHES		SCALE	#						
DECIMALS .X ± .05 .XX ± .01 .XXX ± .005	TOLERANCES	FRACTIONS ± 1/64 ANGLES ± 0° 30'	CODE	S-401-204					
					TYPE & TEMPER	HEAT TREAT. SPEC.	DRAWN	CHECKED	FINAL APPROVAL
					SEE CHART		<i>N. Peters</i>	<i>J. De</i> 3/19/63	<i>BP</i>
					FINISH & SPEC. NO.		ELEC. DES. APP.	MECH. DES. APP.	PO-261

THE CONTENTS OF THIS DRAWING ARE THE EXCLUSIVE PROPERTY OF THE TECHNICAL MATERIEL CORP. ITS UNAUTHORIZED USE FOR REPRODUCTION IN WHOLE OR IN PART IS STRICTLY FORBIDDEN.

REQ. PER UNIT

1

USED ON

MODEL

GPT-200K

ASS'Y. NO.

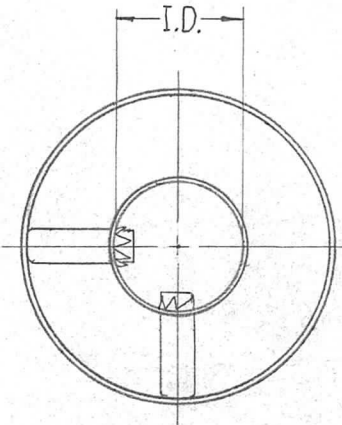
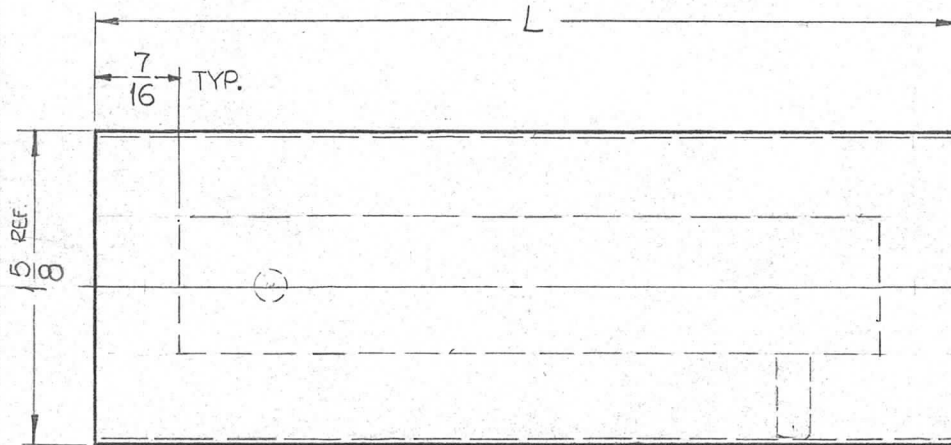
AX-392

DATE

5-29-63

PO-264 0

TMC NO.	IMPEDANCE	I.D.
PO-264-50	50	.588
PO-264-70	70	.385



PO-264-50-L4
 TMC NO. NOMINAL LENGTH IN
 IMPEDANCE INCHES

REQ.	ITEM	PART NO.	F. BUDETTI DESCRIPTION				SYMBOL
			THE TECHNICAL MATERIEL CORP. MAMARONECK, NEW YORK				
			STOCK SIZE				
			LINE RF TRANSMISSION				
			1-5/8 RIGID UNFLANGED				
			MATERIAL				
					SRG	MAC	RJE
			TYPE & TEMPER	HEAT TREAT. SPEC.	DRAWN	CHECKED	FINAL APPROVAL
					OB	aa	PO-264 0
			FINISH & SPEC. NO.		ELEC. DES. APP.	MECH. DES. APP.	

SYMBOL	DESCRIPTION	DATE	CH. NO.	DRAFTS	CHECKER	ENG. APP.
0	ORIGINAL RELEASE FOR PRODUCTION	5/21/64	0	A.M.		

UNLESS OTHERWISE SPECIFIED DIMENSIONS ARE IN INCHES AND INCLUDE CHEMICALLY APPLIED OR PLATED FINISHES		SCALE	
		X	

DECIMALS	FRACTIONS	CODE
.X ± .05	± 1/64	C
.XX ± .01	ANGLES	S401-31
.XXX ± .005	± 0° 30'	

THE CONTENTS OF THIS DRAWING ARE THE EXCLUSIVE PROPERTY OF THE TECHNICAL MATERIEL CORP. ITS UNAUTHORIZED USE FOR REPRODUCTION IN WHOLE OR IN PART IS STRICTLY FORBIDDEN.

REQ. PER UNIT

1

USED ON

MODEL

GPT-200K

ASS'Y. NO.

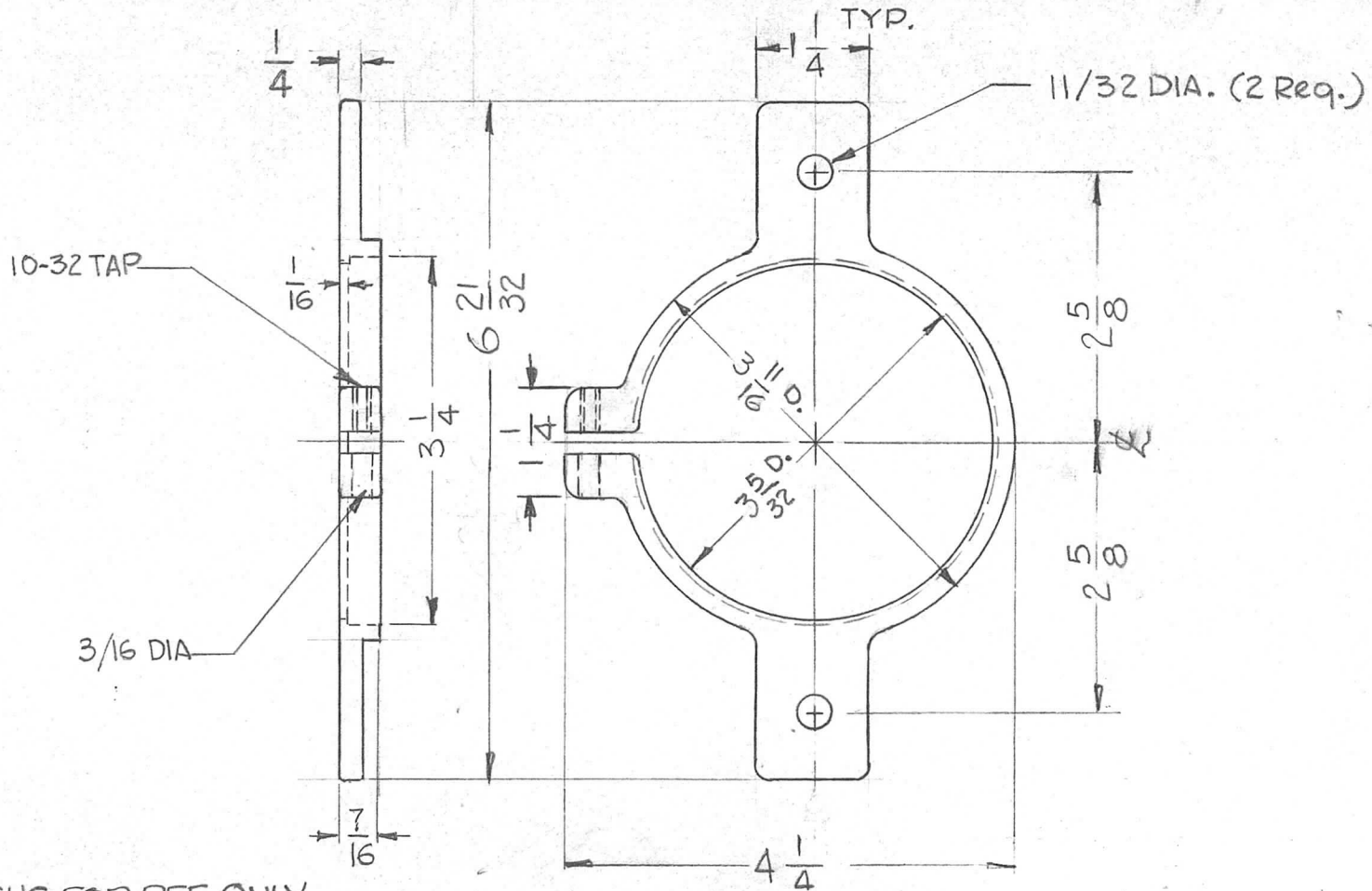
AX-393

DATE

4-10-62

PO-268

○



NOTE
ALL DIMENSIONS FOR REF. ONLY.

REQ.	ITEM	PART NO.	DESCRIPTION				SYMBOL					
			THE TECHNICAL MATERIEL CORP. MAMARONECK, NEW YORK									
			STOCK SIZE									
○			CONNECTOR, FILAMENT RING									
			MATERIAL									
			G.D.L. aa RJC									
			TYPE & TEMPER		HEAT TREAT. SPEC.		DRAWN		CHECKED		FINAL APPROVAL	
							208		Cue 2/10/64		PO-268 ○	
			FINISH & SPEC. NO.				ELEC. DES. APP.		MECH. DES. APP.			
			S401-84									

THE CONTENTS OF THIS DRAWING ARE THE EXCLUSIVE PROPERTY OF THE TECHNICAL MATERIEL CORP. ITS UNAUTHORIZED USE FOR REPRODUCTION IN WHOLE OR IN PART IS STRICTLY FORBIDDEN.

REQ. PER UNIT

1

GR-200K AX-392

USED ON

MODEL

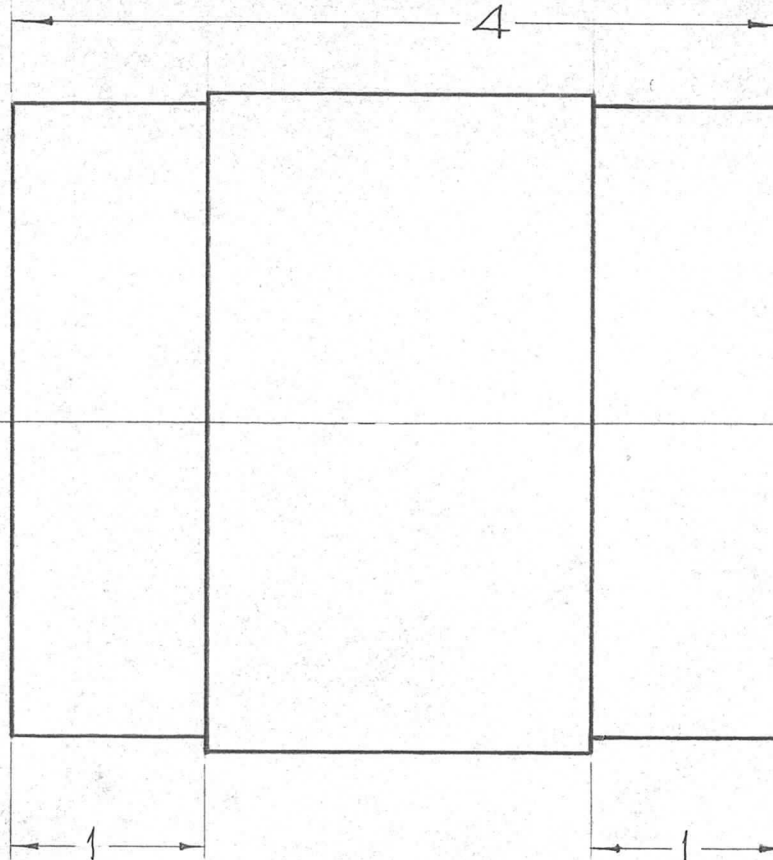
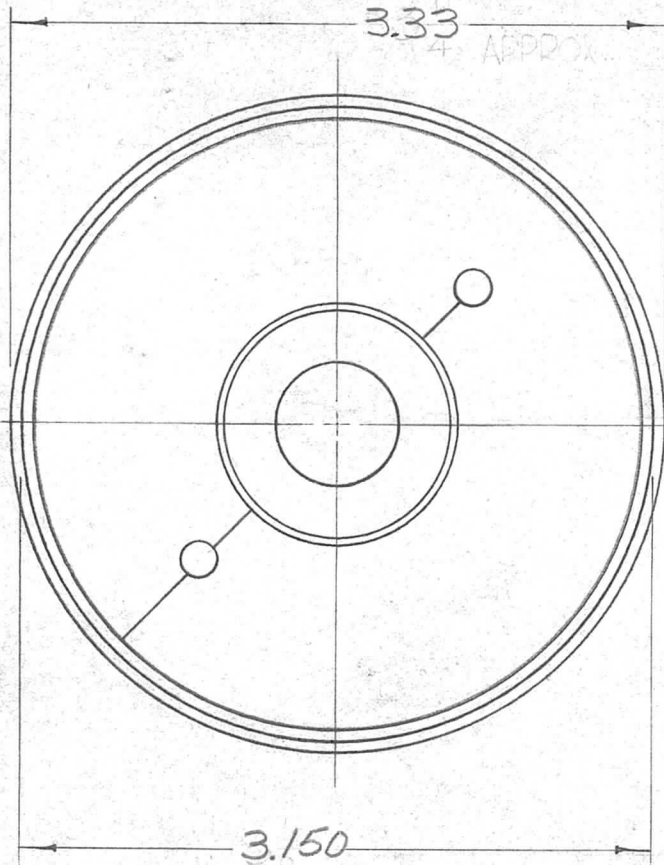
ASS'Y. NO.

DATE

A 2751

5-11-63

PO 270 A



REQ.	ITEM	PART NO.	DESCRIPTION			SYMBOL
			F. BUDETTI			
			THE TECHNICAL MATERIEL CORP. MAMARONECK, NEW YORK			
A		333 WAS 3 1/4, 3.150 WAS 3 1/8	1/6/66	5528	AVV	gc/aa
O		ORIGINAL RELEASE	7.17.64		ASB	
SYM		DESCRIPTION	DATE	CH. NO.	DRAFTS	CHECKER
UNLESS OTHERWISE SPECIFIED DIMENSIONS ARE IN INCHES AND INCLUDE CHEMICALLY APPLIED OR PLATED FINISHES			SCALE			
			5401-48 (984-1)			
DECIMALS .X ± .1 .XX ± .03 .XXX ± .010			FRACTIONS ± 1/64 ANGLES ± 0° 30'		CODE	
TOLERANCES						
TYPE & TEMPER		HEAT TREAT. SPEC.	DRAWN	CHECKED	FINAL APPROVAL	
			John C Biele	aa	PO 270 A	
FINISH & SPEC. NO.			ELEC. DES. APP.	MECH. DES. APP.		

THE CONTENTS OF THIS DRAWING ARE THE EXCLUSIVE PROPERTY OF THE TECHNICAL MATERIEL CORP. ITS UNAUTHORIZED USE FOR REPRODUCTION IN WHOLE OR IN PART IS STRICTLY FORBIDDEN.

REQ. PER UNIT

USED ON

MODEL

ASS'Y. NO.

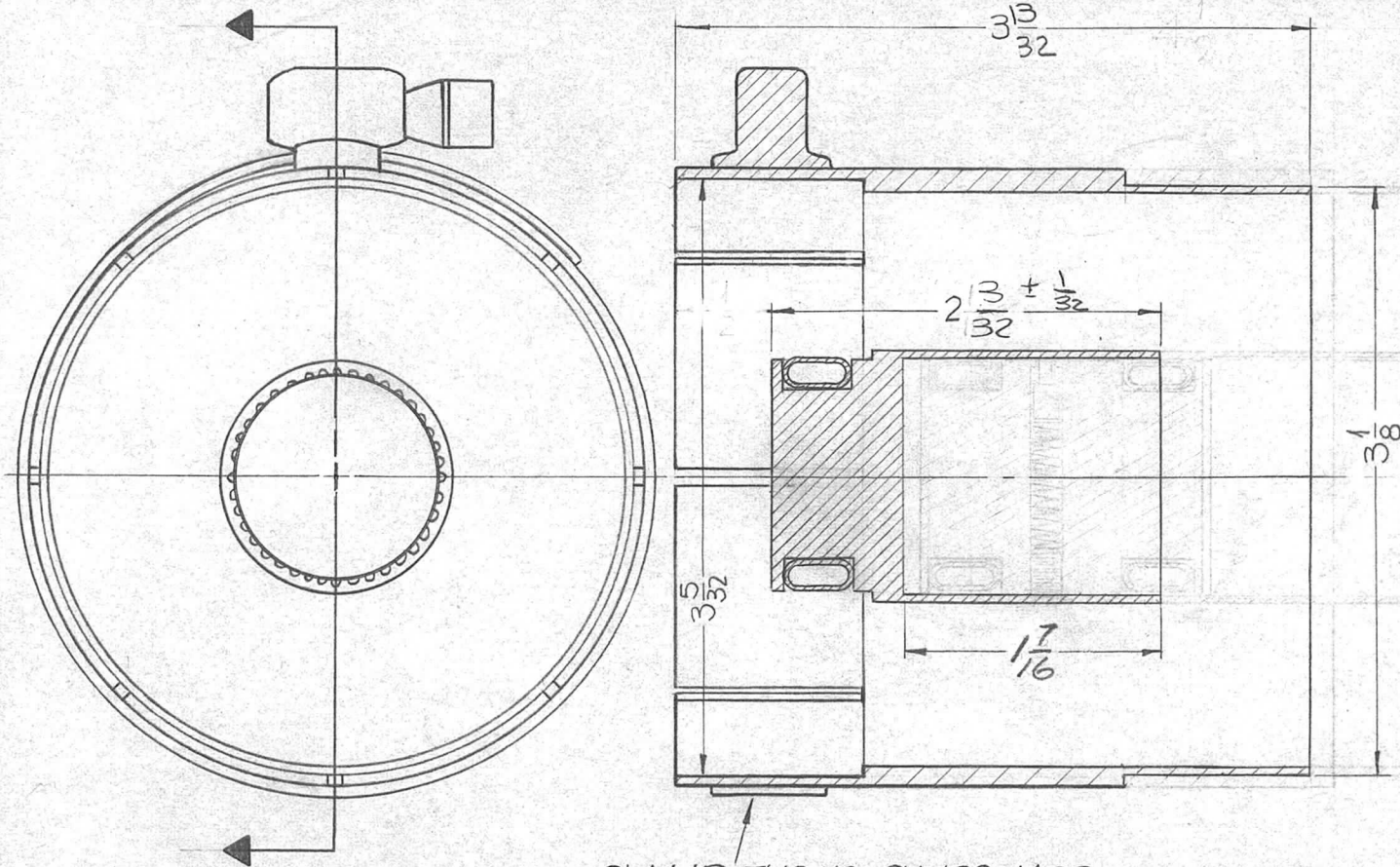
DATE

GPT-200K

AX 392

5 - 23 - 63

PO-272 B



NOTE:
DIMENSIONS FOR
REF. ONLY.

CLAMP, TMC NO. CU 129-14 SS

REQ. ITEM	PART NO.	F. BUDETTI	DESCRIPTION	SYMBOL									
B	1/2 DIM. DELE. DIM 1 7/16 WAS 1 3/8	11/6/66	15528	A.V. JCB aa									
A	3 13/32 & 2 3/32 WERE 3 3/8 & 2 1/2	6.8.63	14182	JCB aa									
O	ORIGINAL RELEASE	7.17.64		ASB									
SYM	DESCRIPTION	DATE	CH. NO.	DRAFTS	CHECKER	ENG. APP.	MATERIAL	TYPE & TEMPER	HEAT TREAT. SPEC.	DRAWN	CHECKED	FINAL APPROVAL	
UNLESS OTHERWISE SPECIFIED DIMENSIONS ARE IN INCHES AND INCLUDE CHEMICALLY APPLIED OR PLATED FINISHES							SCALE			John C. Biele	aa	RJC	
TOLERANCES							CODE				JCB	aa	PO 272 B
DECIMALS .x ± .05 .xx ± .01 .xxx ± .005								S401-48 (983-1)					
FRACTIONS ± 1/64 ANGLES ± 0° 30'													
FINISH & SPEC. NO.													
ELEC. DES. APP.													
MECH. DES. APP.													

THE CONTENTS OF THIS DRAWING ARE THE EXCLUSIVE PROPERTY OF THE TECHNICAL MATERIEL CORP. ITS UNAUTHORIZED USE FOR REPRODUCTION IN WHOLE OR IN PART IS STRICTLY FORBIDDEN.

REQ. PER UNIT

1

USED ON

MODEL

GPT-200KAX-392

ASS'Y. NO.

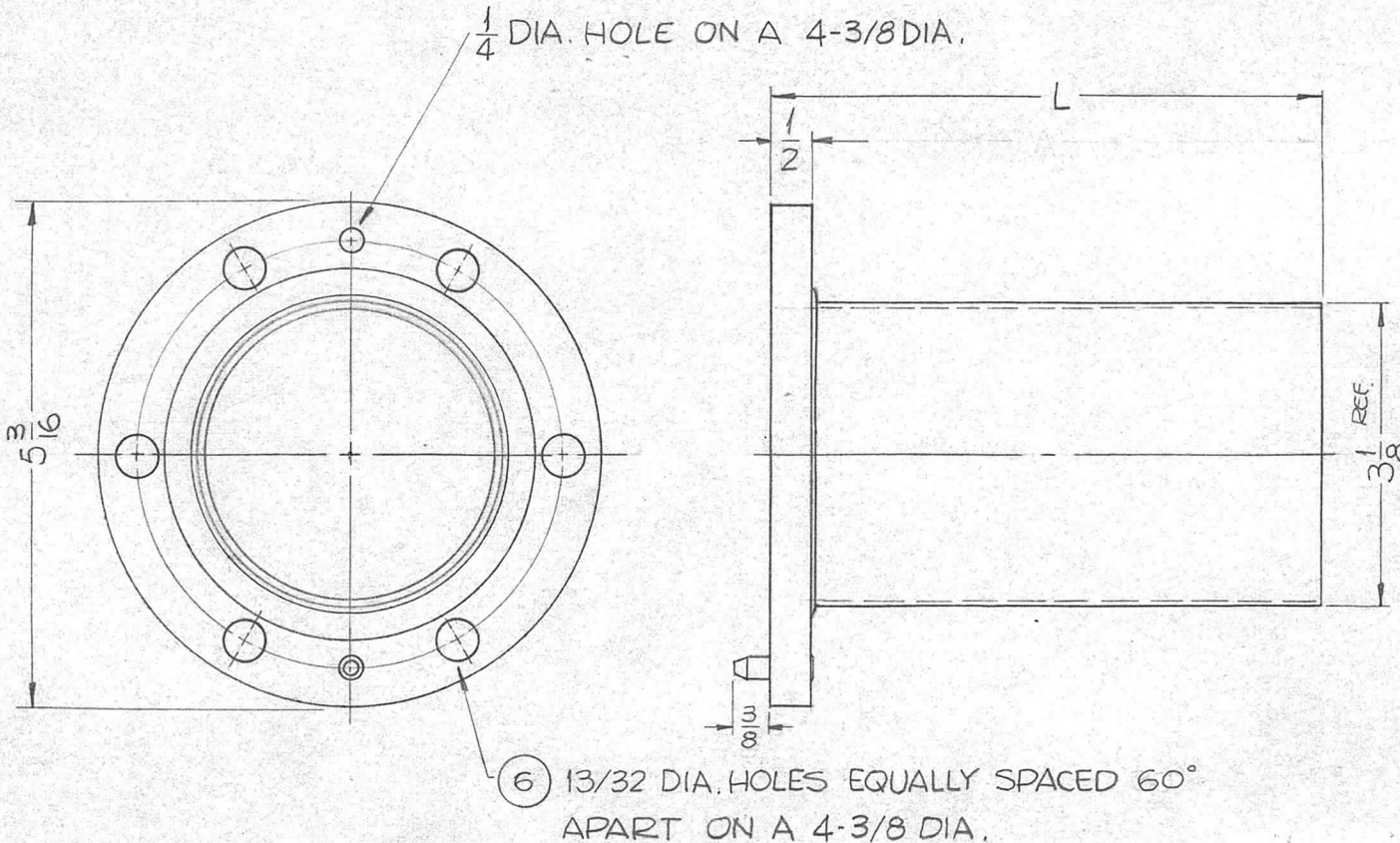
A-2751

DATE

5-24-63

PO 274 0

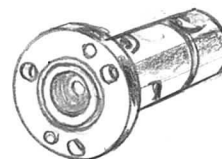
TMC NO. PO-274-1
 PCL 2 1/2
 5-24-63



REQ.	ITEM	PART NO.	F. BUDETTI	DESCRIPTION	SYMBOL				
				THE TECHNICAL MATERIEL CORP. MAMARONECK. NEW YORK					
				ADAPTOR, FLANGED TO UNFLANGED LINE, 3-1/8					
0	ORIGINAL RELEASE	7.1764	ASB						
SYM	DESCRIPTION	DATE	CH. NO.	DRAFTS	CHECKER	ENG. APP.			
UNLESS OTHERWISE SPECIFIED DIMENSIONS ARE IN INCHES AND INCLUDE CHEMICALLY APPLIED OR PLATED FINISHES		SCALE							
DECIMALS .X ± .05 .XX ± .01 .XXX ± .005	TOLERANCES	FRACTIONS ± 1/64 ANGLES ± 0° 30'	CODE	S-401-31					
					SRG	aa	RJC		
					TYPE & TEMPER	HEAT TREAT. SPEC.	DRAWN	CHECKED	FINAL APPROVAL
							POB	MC #1/4	PO-274 0
					FINISH & SPEC. NO.	ELEC. DES. APP.	MECH. DES. APP.		

TMC PART NO.	MFR'S No.	IMPEDANCE
PO 277-1	75AR	50 Ω
PO 277-2	75AR-75	75 Ω

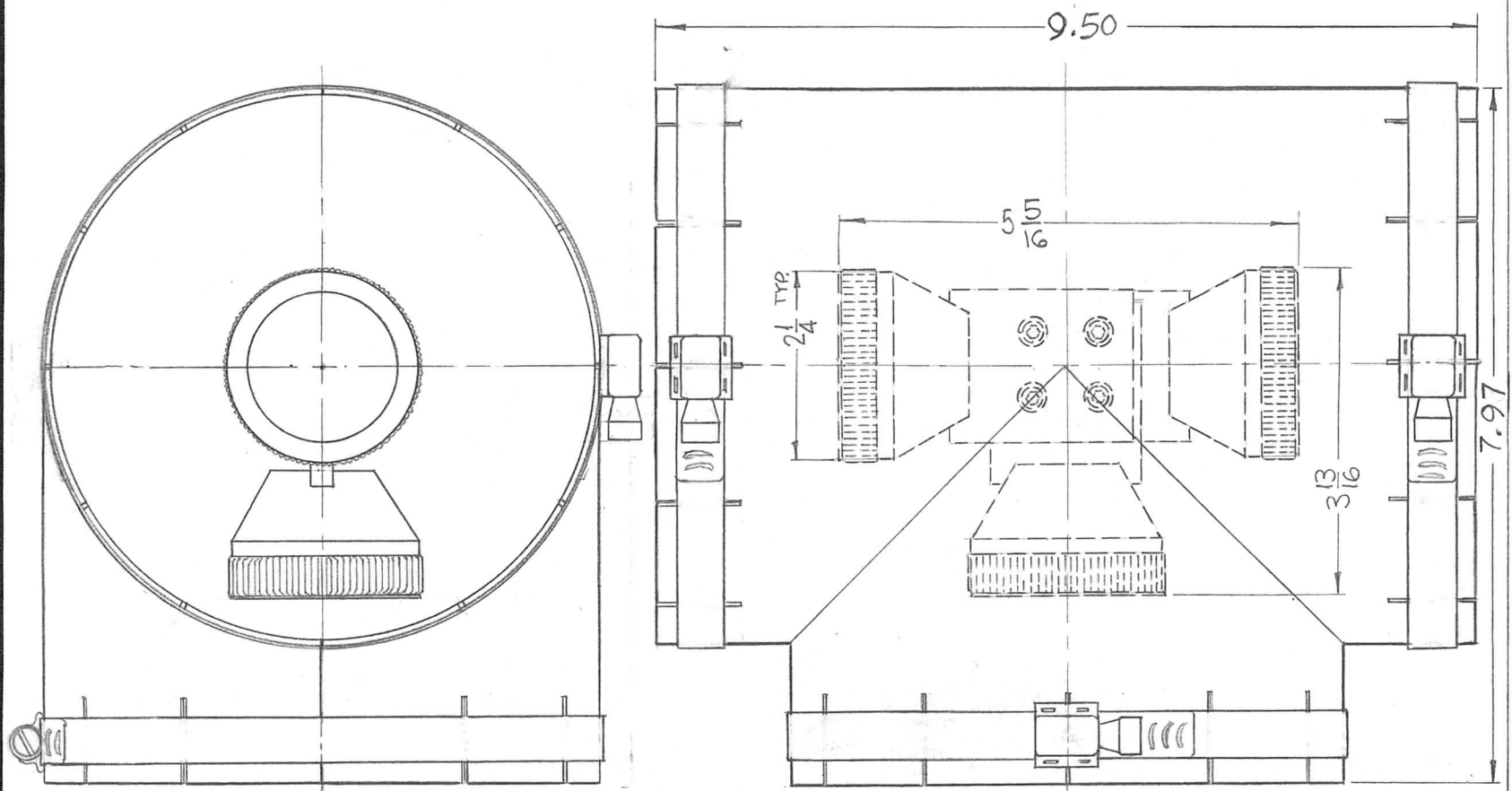
REQ. PER UNIT	USED ON		PO 277	Ø
	MODEL	ASS'Y. NO.		
			7-28-75	



ISSUE	ITEM	CHANGED FROM	DATE	CH. NO.	DRAFTS	CHECKER	ENG. APP.	REQ. ITEM	PART NO.	DESCRIPTION	SYMBOL		
Ø		ORIGINAL RELEASE	9/2/75		cl.					TMC INDUSTRIAL CORP. MAMARONECK. NEW YORK			
									STOCK SIZE	7/8 EIA FLANGE			
									MATERIAL				
TOLERANCES										GD.L	MB	SD	
DEC. DIM. ±			SCALE: 401-31					TYPE & TEMPER		HEAT TREAT. SPEC.	DRAWN	CHECKED	FINAL APPROVAL
FRAC. DIM. ±			MAXIMUM ALLOWABLE TOLERANCES HAVE BEEN DETERMINED AND ANY DEVIATIONS WILL BE CAUSE FOR REJECTION.										
ANGULAR DIM. ±			REMOVE ALL BURRS AND SHARP EDGES					FINISH & SPEC. NO.		ELEC. DES. APP.	MECH. DES. APP.		
											PO 277-Ø		

REQ. PER UNIT	USED ON		
	MODEL	ASS'Y. NO.	DATE
1	GPT-200K	A 3198	11-13-63

PO 278 A



NOTE:
ALL DIMENSIONS FOR REF. ONLY

REQ.	ITEM	PART NO.	F. BUDETTI			DESCRIPTION	SYMBOL
A			THE TECHNICAL MATERIEL CORP.				
			MAMARONECK, NEW YORK				
			STOCK SIZE			TEE ASS'Y, RF. TRANS. LINE, 6 1/8	
			MATERIAL				
					SRG	aa	RL
			TYPE & TEMPER	HEAT TREAT. SPEC.	DRAWN	CHECKED	FINAL APPROVAL
					SRG	see 1/16/64	PO 278 A
			FINISH & SPEC. NO.		ELEC. DES. APP.	MECH. DES. APP.	

UNLESS OTHERWISE SPECIFIED
DIMENSIONS ARE IN INCHES AND INCLUDE
CHEMICALLY APPLIED OR PLATED FINISHES

DECIMALS
.X ± .05
.XX ± .01
.XXX ± .005

FRACTIONS
± 1/64
ANGLES
± 0° 30'

TOLERANCES

SCALE
1/2" = 1"

DATE
1/17/66

CH. NO.
15530

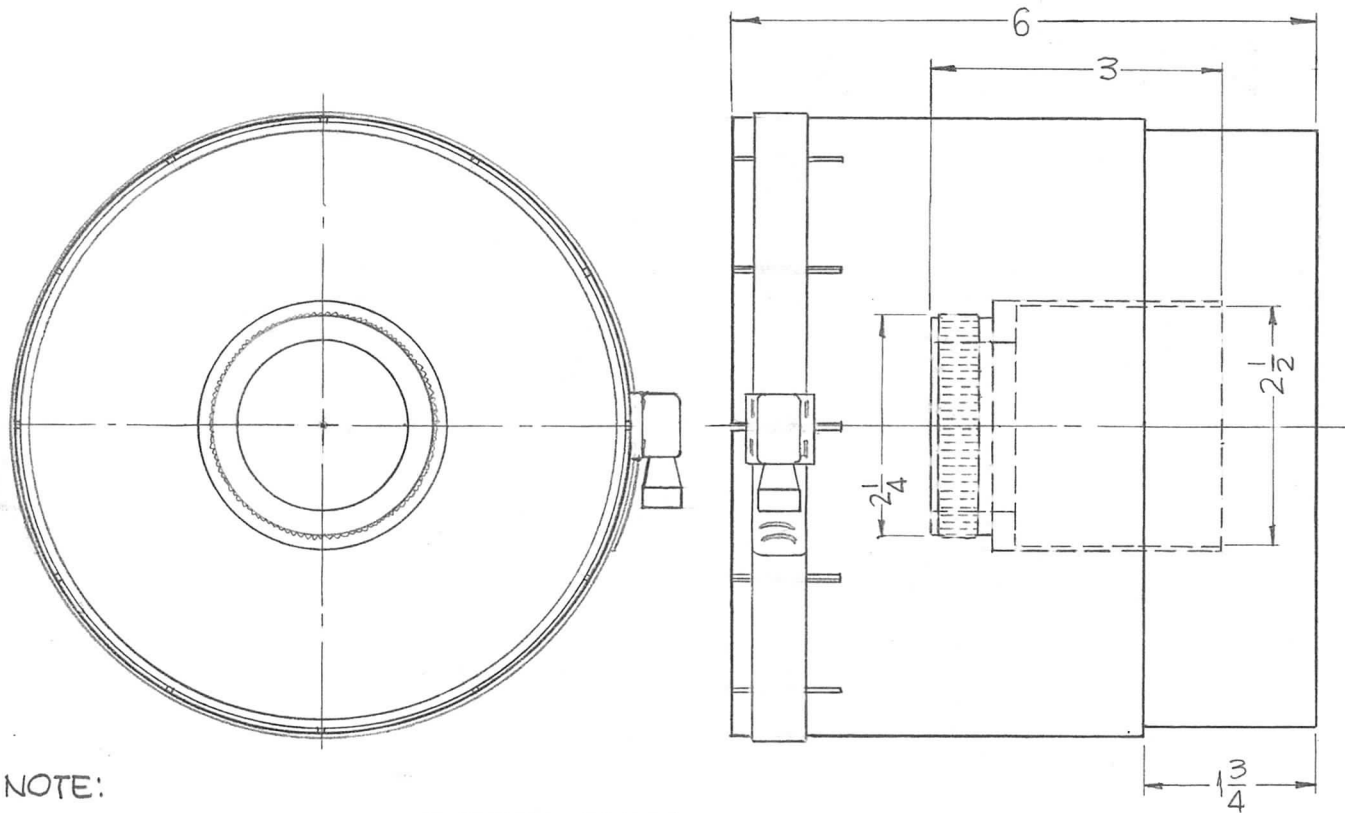
DRAFTS
HCA

CHECKER
JCB

ENG. APP.
aa

CODE
C

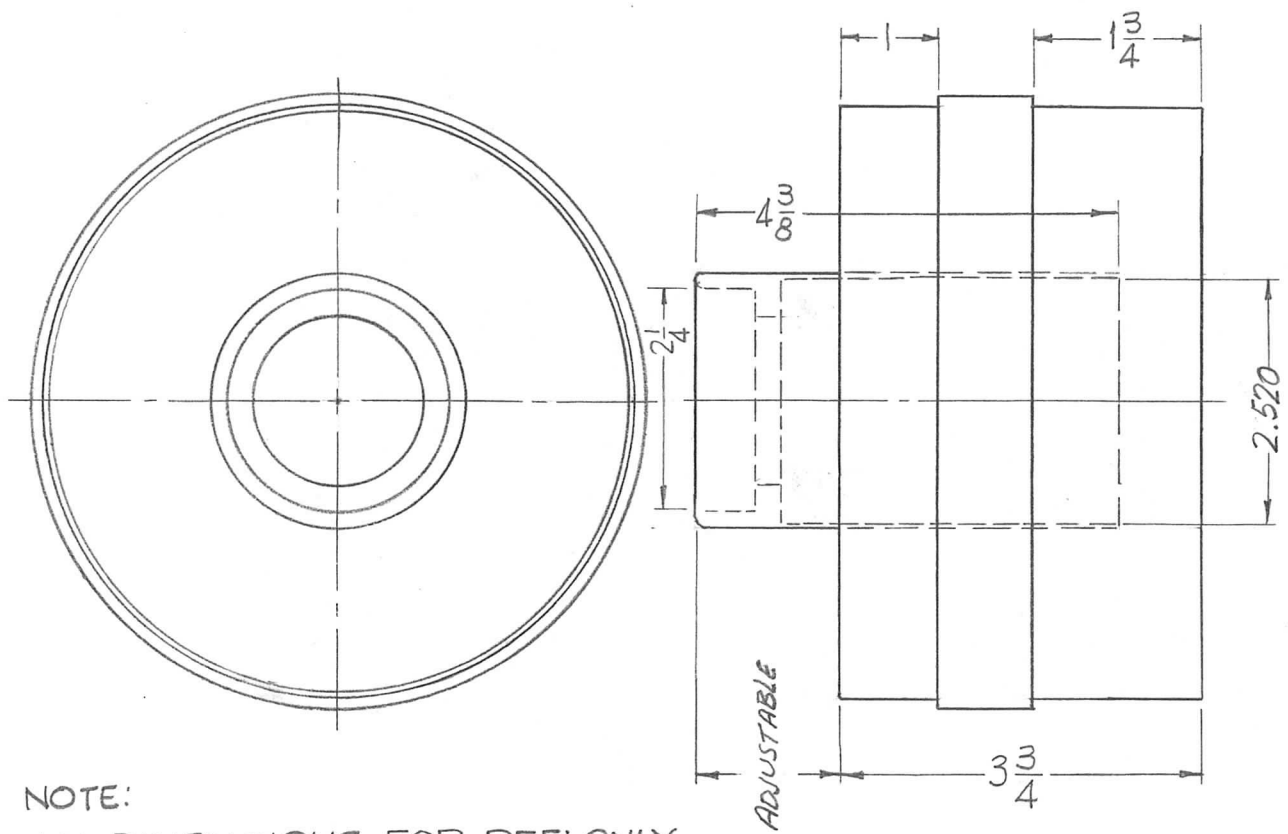
REQ. PER UNIT	USED ON			PO 279	A
	MODEL	ASS'Y. NO.	DATE		
2	GPT-200K	A 3198	11-12-63		



NOTE:
ALL DIMENSIONS FOR REF! ONLY

							REQ. ITEM	PART NO.	F. BUDETTI	DESCRIPTION	SYMBOL
A	6 WAS 6 1/32; DELE. 2 1/16	1-17-66	15530	HLA	SRG	aa			THE TECHNICAL MATERIEL CORP. MAMARONECK, NEW YORK		
	ORIG. RELEASE FOR PROD.	5-16-64		SRG					ADAPTOR R.F. TRANS. LINE, 6 1/8 SWITCH TO LINE		
SYM	DESCRIPTION	DATE	CH. NO.	DRAFTS	CHECKER	ENG. APP.	MATERIAL				
UNLESS OTHERWISE SPECIFIED DIMENSIONS ARE IN INCHES AND INCLUDE CHEMICALLY APPLIED OR PLATED FINISHES		SCALE		1/2" = 1"					SRG	aa	RAC
TOLERANCES		CODE	TYPE & TEMPER		HEAT TREAT. SPEC.		DRAWN	CHECKED	FINAL APPROVAL		
DECIMALS .X ± .05 .XX ± .01 .XXX ± .005	FRACTIONS ± 1/64 ANGLES ± 0° 30'	C					SRG	RAC	PO 279 A		
							FINISH & SPEC. NO.		ELEC. DES. APP.	MECH. DES. APP.	

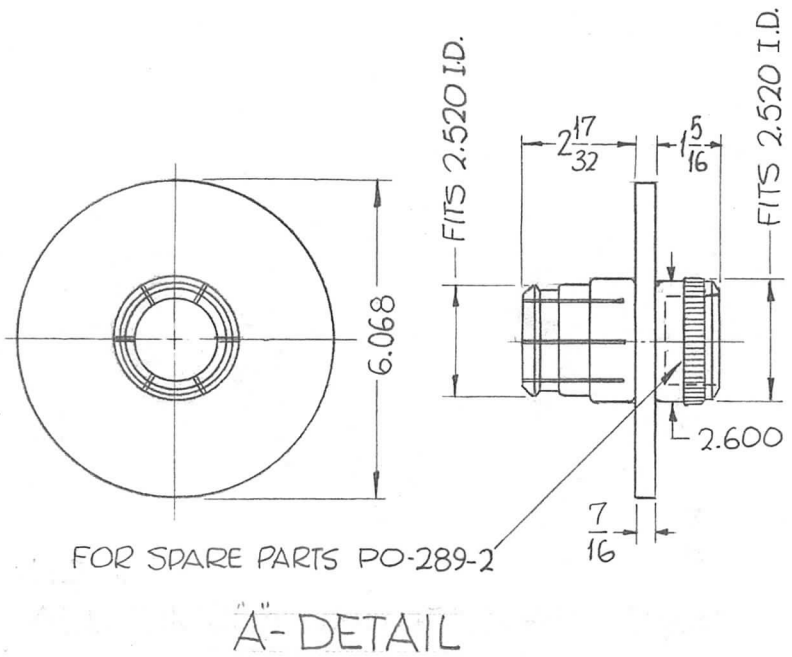
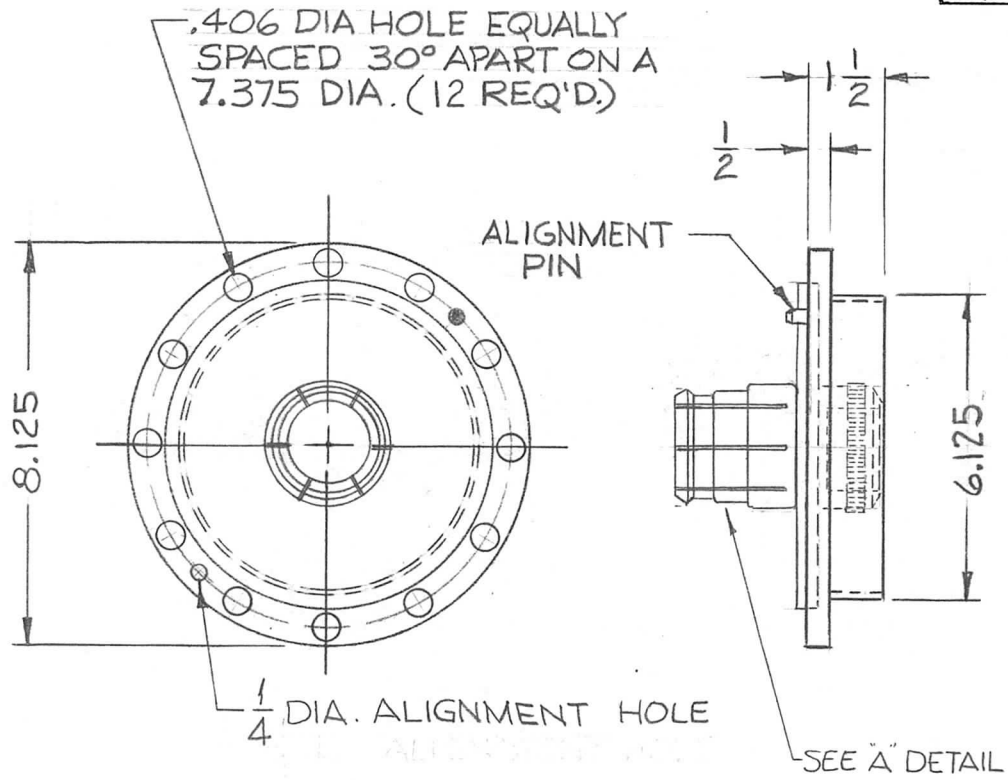
REQ. PER UNIT	USED ON			PO 280 A
	MODEL	ASS'Y. NO.	DATE	
1	GPT-200K	A 3198	11-12-63	



NOTE:
ALL DIMENSIONS FOR REF. ONLY

REQ.	ITEM	PART NO.	F. BUDETTI DESCRIPTION			SYMBOL
A	2.520 WAS 2 1/2; "ADJUSTABLE" WAS 1 1/2	11-66 15530 HLA	THE TECHNICAL MATERIEL CORP. MAMARONECK. NEW YORK			
O	ORIG. RELEASE FOR PROD.	5-16-64 SRG	ADAPTOR RF. TRANS LINE, 6 1/8 TEE TO LINE			
SYM	DESCRIPTION	DATE	CH. NO.	DRAFTS	CHECKER	ENG. APP.
UNLESS OTHERWISE SPECIFIED DIMENSIONS ARE IN INCHES AND INCLUDE CHEMICALLY APPLIED OR PLATED FINISHES		SCALE		1/2" = 1"		
DECIMALS	FRACTIONS	CODE	TYPE & TEMPER		HEAT TREAT. SPEC.	DRAWN
.X ± .05	± 1/64	C				CHECKED
.XX ± .01	ANGLES		FINISH & SPEC. NO.			FINAL APPROVAL
.XXX ± .005	± 0° 30'					
			ELEC. DES. APP.		MECH. DES. APP.	PO 280 A

REQ. PER. UNIT	USED ON			PO-281 0
	MODEL	ASS'Y. NO.	DATE	
1	GPT 200K	AX-397	10-29-63	

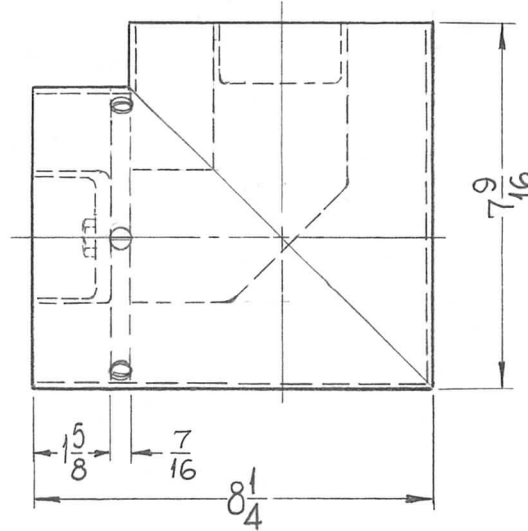
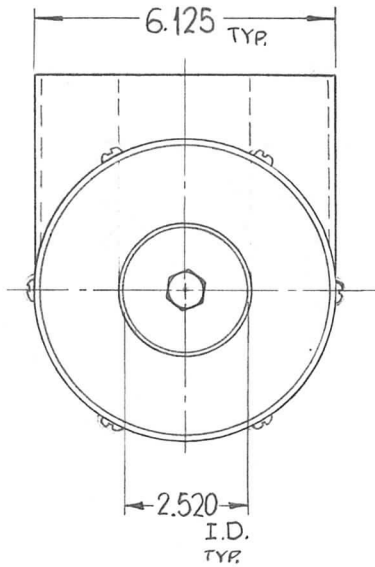


NOTE:
ALL DIMENSIONS FOR REF ONLY

REF. ID-292

SYM	DESCRIPTION	DATE	CH. NO.	DRAFTS	CHECKER	ENG. APP.	REQ. ITEM	PART NO.	F. BUDETTI DESCRIPTION	SYMBOL	
0	ORIGINAL RELEASE FOR PRODUCTION	5-27-64	0	A.M.					THE TECHNICAL MATERIEL CORP. MAMARONECK, NEW YORK		
									ADAPTOR, LINE RF TRANSMISSION 6 1/8 (LEFT)		
UNLESS OTHERWISE SPECIFIED DIMENSIONS ARE IN INCHES AND INCLUDE CHEMICALLY APPLIED OR PLATED FINISHES							SCALE				
							1/4 = 1"				
DECIMALS .X ± .05 .XX ± .01 .XXX ± .005							FRACTIONS ± 1/64 ANGLES ± 0° 30'	TOLERANCES			
							CODE	S401-276 (P/O 601-083)			
							TYPE & TEMPER	HEAT TREAT. SPEC.	DRAWN	CHECKED	FINAL APPROVAL
									<i>[Signature]</i>	<i>[Signature]</i>	PO-281 0
							FINISH & SPEC. NO.	ELEC. DES. APP.	MECH. DES. APP.		

REQ. PER UNIT	USED ON			PO-284	○
	MODEL	ASS'Y. NO.	DATE		
1	GPT-200K	AX-397	1-14-64		

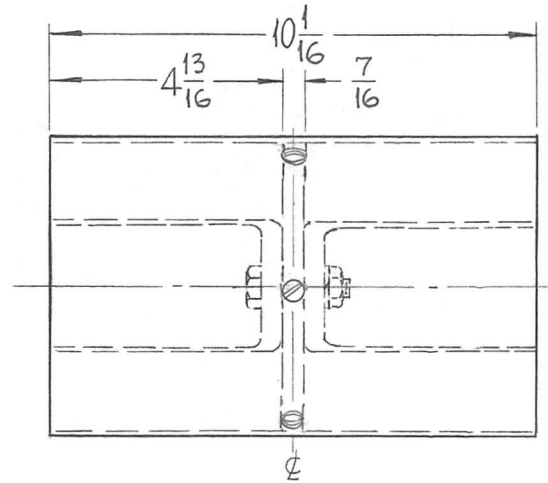
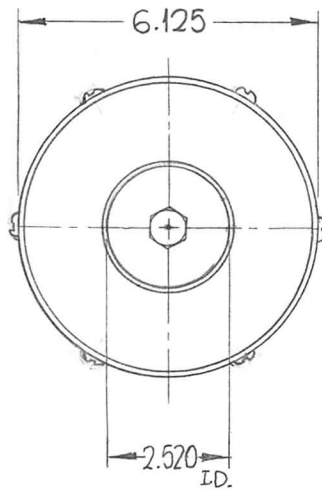


NOTE:
DIMENSIONS FOR REF. ONLY.

REF. ID-292

REQ.	ITEM	PART NO.	F. BUDETTI DESCRIPTION				SYMBOL
			THE TECHNICAL MATERIEL CORP. MAMARONECK, NEW YORK				
			STOCK SIZE				
○			ELBOW, LINE R.F. TRANSMISSION				
			6 1/8 UNFLANGED				
SYM	DESCRIPTION	DATE	CH. NO.	DRAFTS	CHECKER	ENG. APP.	MATERIAL
	ORIGINAL RELEASE FOR PRODUCTION	5-27-64	0	A.M.			
UNLESS OTHERWISE SPECIFIED DIMENSIONS ARE IN INCHES AND INCLUDE CHEMICALLY APPLIED OR PLATED FINISHES		SCALE					
		1/4 = 1"					
DECIMALS .X ± .05 .XX ± .01 .XXX ± .005		FRACTIONS ± 1/64 ANGLES ± 0° 30'		CODE		S-401-276 (P/O 601-083)	
TOLERANCES				TYPE & TEMPER		HEAT TREAT. SPEC.	
				DRAWN		CHECKED	
				ELEC. DES. APP.		MECH. DES. APP.	
				SRG		aa	
				POJ		H/4	
				PO-284		○	

REQ. PER UNIT	USED ON			PO-285	○
	MODEL	ASS'Y. NO.	DATE		
1	GPT-200K	AX-397	1-14-64		

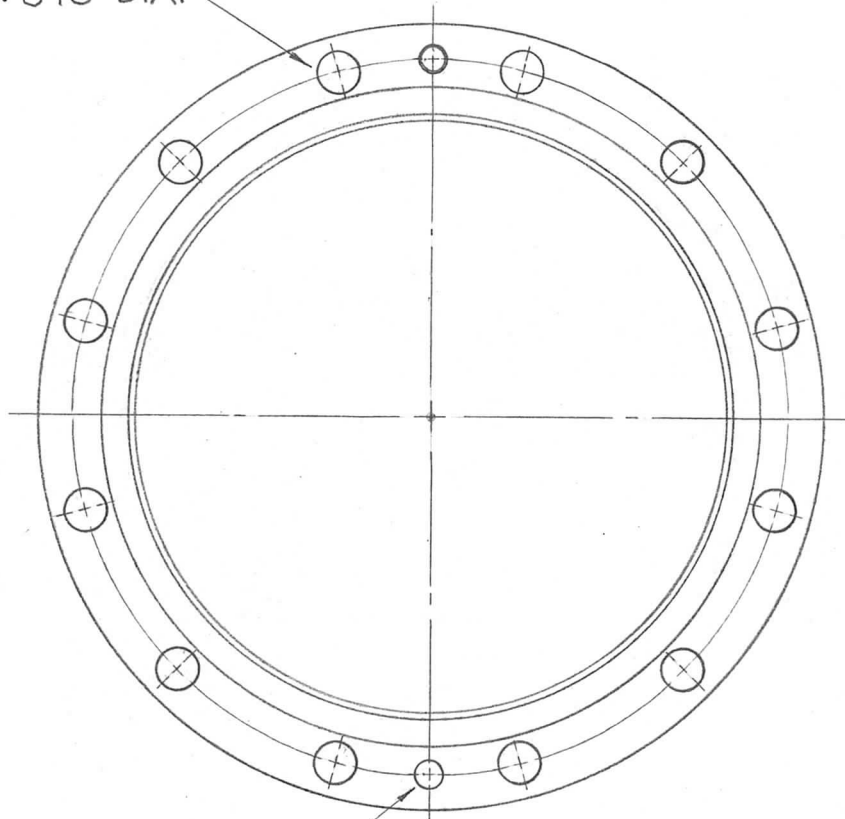


NOTE:
DIMENSIONS FOR REF. ONLY.

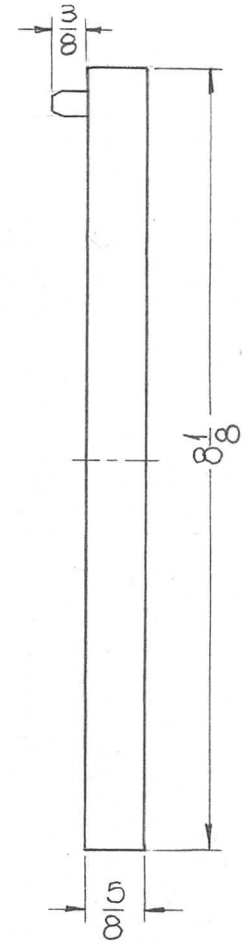
REF. ID-292

REQ.	ITEM	PART NO.	F. BUDETTI	DESCRIPTION	SYMBOL						
				THE TECHNICAL MATERIEL CORP. MAMARONECK, NEW YORK							
				STOCK SIZE							
○				ADAPTOR LINE R.F. TRANSMISSION 6 1/8"							
				MATERIAL							
SYMBOL	DESCRIPTION	DATE	CH. NO.	DRAFTS	CHECKER	ENG. APP.					
		5-27-64	○	A.M.							
UNLESS OTHERWISE SPECIFIED DIMENSIONS ARE IN INCHES AND INCLUDE CHEMICALLY APPLIED OR PLATED FINISHES		SCALE	1/4" = 1"								
DECIMALS .X ± .05 .XX ± .01 .XXX ± .005	TOLERANCES	FRACTIONS ± 1/64 ANGLES ± 0° 30'	CODE	S-401-276 (P/O 601-083)							
							SRG	aa	Ric		
							DRAWN	CHECKED	FINAL APPROVAL		
							○○○	MC 4/13/64	PO-285 ○		
							FINISH & SPEC. NO.	ELEC. DES. APP.	MECH. DES. APP.		

(12) 13/32 DIA. HOLES
EQUALLY SPACED
30° APART ON A
7.375 DIA.



1/4 DIA. HOLE ON A 7.375 DIA.

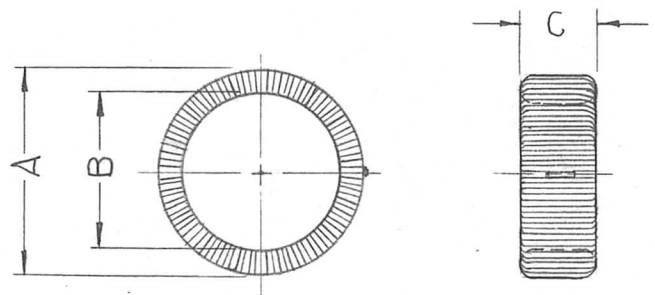


REQ. PER UNIT	USED ON			PO-288	O
	MODEL	ASS'Y. NO.	DATE		
1	TER-100K		9-24-63		

SYM	DESCRIPTION	DATE	CH. NO.	DRAFTS	CHECKER	ENG. APP.	REQ. ITEM	PART NO.	F. BUDETTI DESCRIPTION	SYMBOL	
O	ORIGINAL RELEASE	5.16.64			WJB				THE TECHNICAL MATERIEL CORP. MAMARONECK, NEW YORK	O	
X	EXPERIMENTAL RELEASE	5/15/64						FLANGE R.F. TRANSMISSION LINE			
									6-1/8		
UNLESS OTHERWISE SPECIFIED DIMENSIONS ARE IN INCHES AND INCLUDE CHEMICALLY APPLIED OR PLATED FINISHES							SCALE				
							1/2" = 1"				
DECIMALS .X ± .05 .XX ± .01 .XXX ± .005							TOLERANCES				
FRACTIONS ± 1/64 ANGLES ± 0° 30'							CODE				
							TYPE & TEMPER	HEAT TREAT. SPEC.	DRAWN	CHECKED	FINAL APPROVAL
									SRG		
							FINISH & SPEC. NO.	ELEC. DES. APP.	MECH. DES. APP.	PO-288 O	

TMC NO	A	B	C
PO-289-1	1-1/16	13/16	3/8
PO-289-2	1-3/4	1-1/2	3/8

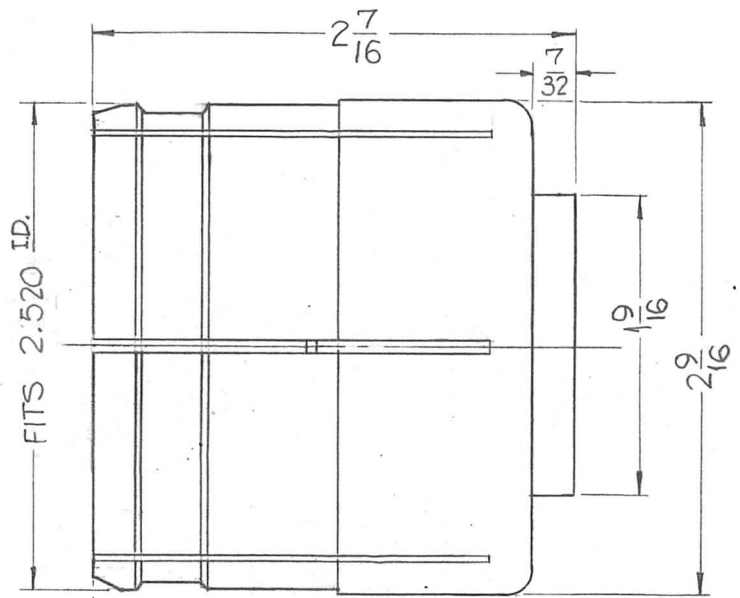
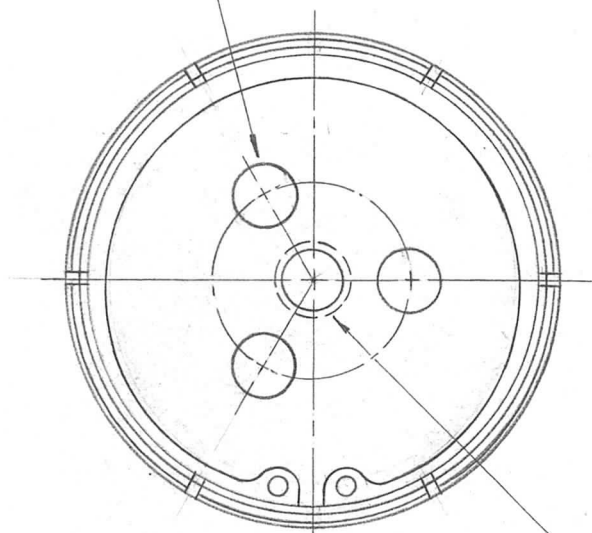
REQ. PER UNIT	USED ON		PO-289	O
	MODEL	ASS'Y. NO.		
	GPT-200K		9-23-63	



								REQ. ITEM	PART NO.	F. BUDETTI	DESCRIPTION	SYMBOL	
										THE TECHNICAL MATERIEL CORP. MAMARONECK. NEW YORK			
									STOCK SIZE	CONTACT, ELECTRICAL, SPRING			
O	ORIGINAL RELEASE FOR PRODUCTION	5-13-64	O	A.M.									
SYM	DESCRIPTION	DATE	CH. NO.	DRAFTS	CHECKER	ENG. APP.			MATERIAL				
UNLESS OTHERWISE SPECIFIED DIMENSIONS ARE IN INCHES AND INCLUDE CHEMICALLY APPLIED OR PLATED FINISHES		SCALE								SRG	aa	RDL	
DECIMALS .X ± .05 .XX ± .01 .XXX ± .005		FRACTIONS ± 1/64 ANGLES ± 0° 30'		CODE	S401-48				TYPE & TEMPER	HEAT TREAT. SPEC.	DRAWN	CHECKED	FINAL APPROVAL
TOLERANCES									SILVER PLATED		SRG	aa	PO-289
									FINISH & SPEC. NO.		ELEC. DES. APP.	MECH. DES. APP.	O

REQ. PER UNIT	USED ON			PO-290 0
	MODEL	ASS'Y. NO.	DATE	
1	GPT-200K	AX-395	9-24-63	

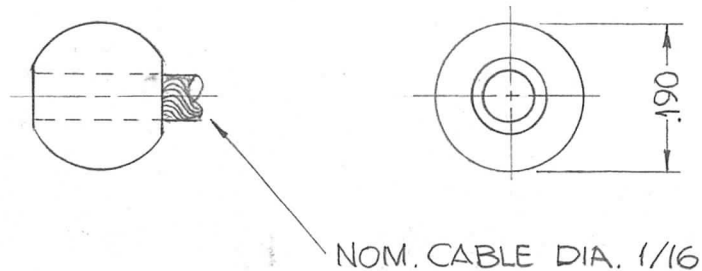
(3) 5/16 DIA. HOLES SPACED 120° APART ON 1/2 RAD.



DRILL & TAP 3/8 - 16 THRDS. CLASS 2

REQ. ITEM	PART NO.	F. BUDETTI	DESCRIPTION	SYMBOL							
			THE TECHNICAL MATERIEL CORP. MAMARONECK, NEW YORK								
			CONNECTOR, RF TRANSMISSION LINE 6-1/8 STUB								
0	ORIGINAL RELEASE	5.16.64	ATB								
SYM	DESCRIPTION	DATE	CH. NO.	DRAFTS	CHECKER	ENG. APP.	MATERIAL				
UNLESS OTHERWISE SPECIFIED DIMENSIONS ARE IN INCHES AND INCLUDE CHEMICALLY APPLIED OR PLATED FINISHES		SCALE	1" = 1"					SRG	aa	RAC	
DECIMALS .X ± .05 .XX ± .01 .XXX ± .005	TOLERANCES	FRACTIONS ± 1/64 ANGLES ± 0° 30'	CODE				TYPE & TEMPER	HEAT TREAT. SPEC.	DRAWN	CHECKED	FINAL APPROVAL
									SRG	aa	PO-290 0
							FINISH & SPEC. NO.		ELEC. DES. APP.	MECH. DES. APP.	

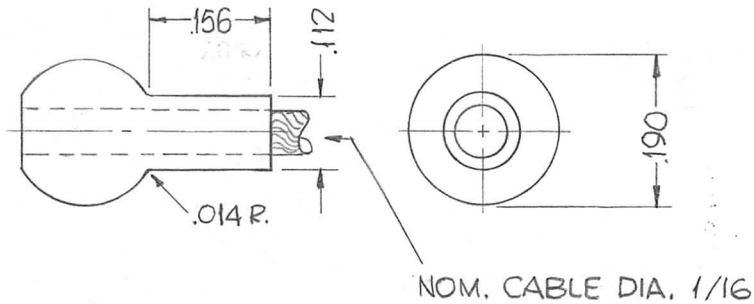
REQ. PER UNIT	USED ON			PO-291	0
	MODEL	ASS'Y. NO.	DATE		
10	GPT-200K (AX-395)	A-3255	8-13-63		



NOTE:
DIM. AFTER SWAGING

							REQ. ITEM	PART NO.	F. BUDETTI	DESCRIPTION	SYMBOL		
										THE TECHNICAL MATERIEL CORP. MAMARONECK. NEW YORK			
										BALL END, WIRE ROPE STOP			
○	ORIGINAL RELEASE FOR PRODUCTION		3-1-64				STAINLESS STEEL						
SYM	DESCRIPTION		DATE	CH. NO.	DRAFTS	CHECKER	ENG. APP.						
UNLESS OTHERWISE SPECIFIED DIMENSIONS ARE IN INCHES AND INCLUDE CHEMICALLY APPLIED OR PLATED FINISHES			SCALE 3X				303		SRG	QA	Katz 3-30-64		
DECIMALS .X ± .05 .XX ± .01 .XXX ± .005			FRACTIONS ± 1/64 ANGLES ± 0° 30'			CODE C	S401-277(BWR-300-2)	S104-PASSIVATE	TYPE & TEMPER	HEAT TREAT. SPEC.	DRAWN	CHECKED	FINAL APPROVAL
TOLERANCES									2R LB				PO-291 0
											ELEC. DES. APP.	MECH. DES. APP.	

REQ. PER UNIT	USED ON			PO-292	0
	MODEL	ASS'Y. NO.	DATE		
10	GPT-200K (AX-395)	A-3255	8-13-63		

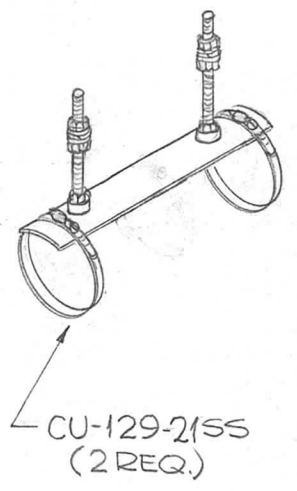
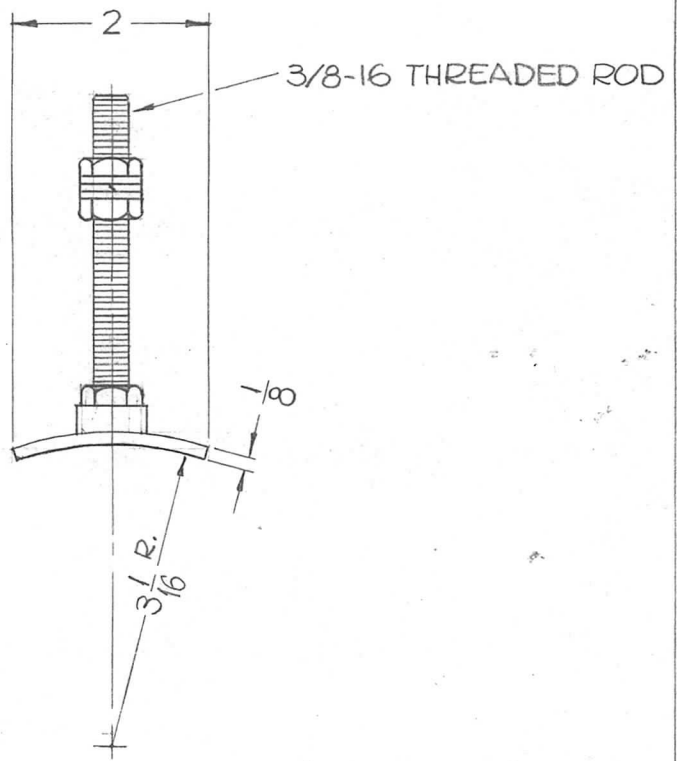
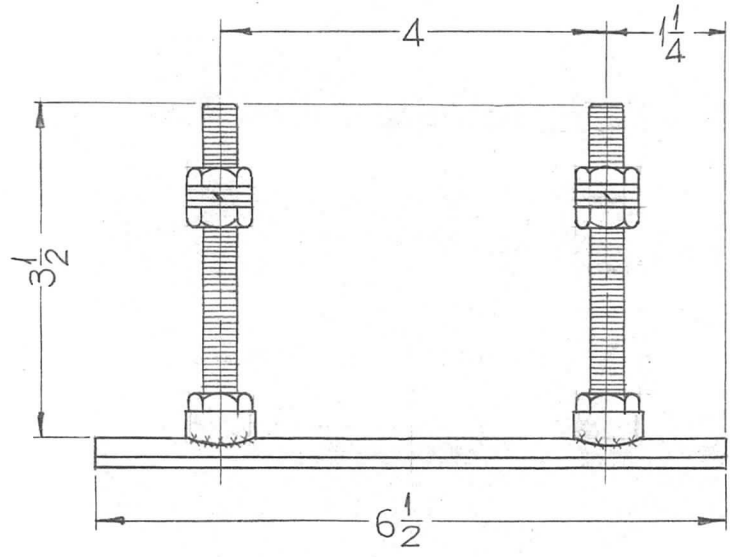


NOTE:
DIM. AFTER SWAGING

REQ.	ITEM	PART NO.	F. BUDETTI	DESCRIPTION	SYMBOL				
				THE TECHNICAL MATERIEL CORP. MAMARONECK, NEW YORK					
				STAINLESS STEEL	BALL END, WIRE ROPE STOP				
0	ORIGINAL RELEASE FOR PRODUCTION	3-1-64							
SYM	DESCRIPTION	DATE	CH. NO.	DRAFTS	CHECKER	ENG. APP.			
UNLESS OTHERWISE SPECIFIED DIMENSIONS ARE IN INCHES AND INCLUDE CHEMICALLY APPLIED OR PLATED FINISHES		SCALE	3X			303	SRG	aa	3-30-64
DECIMALS .X ± .05 .XX ± .01 .XXX ± .005	TOLERANCES	FRACTIONS ± 1/64 ANGLES ± 0° 30'	CODE	S401-277 (MS-20664-C2)		S104-PASSIVATE	28 LB	PO-292	0
						FINISH & SPEC. NO.	ELEC. DES. APP.	MECH. DES. APP.	

REQ. PER UNIT	USED ON		
	MODEL	ASS'Y. NO.	DATE
1	GPT-200K	AX-397	10-14-63

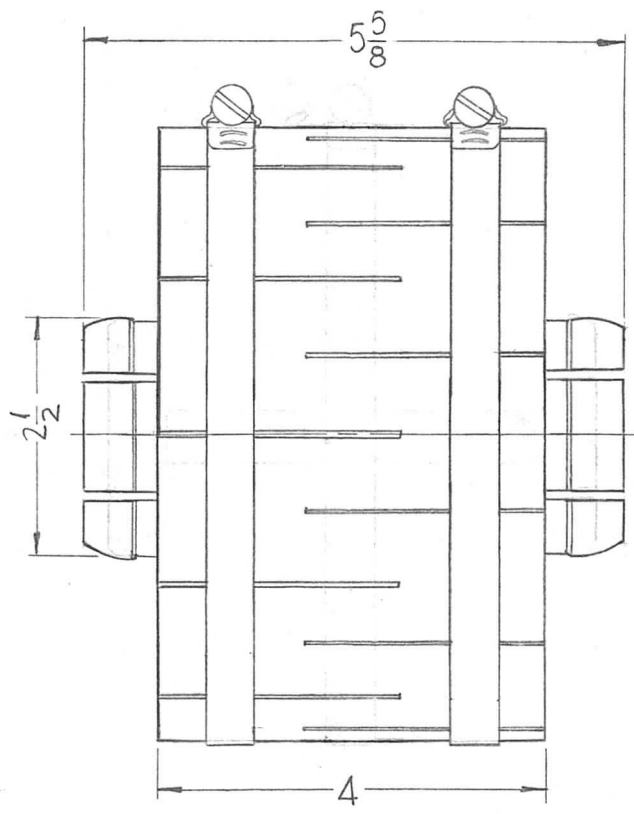
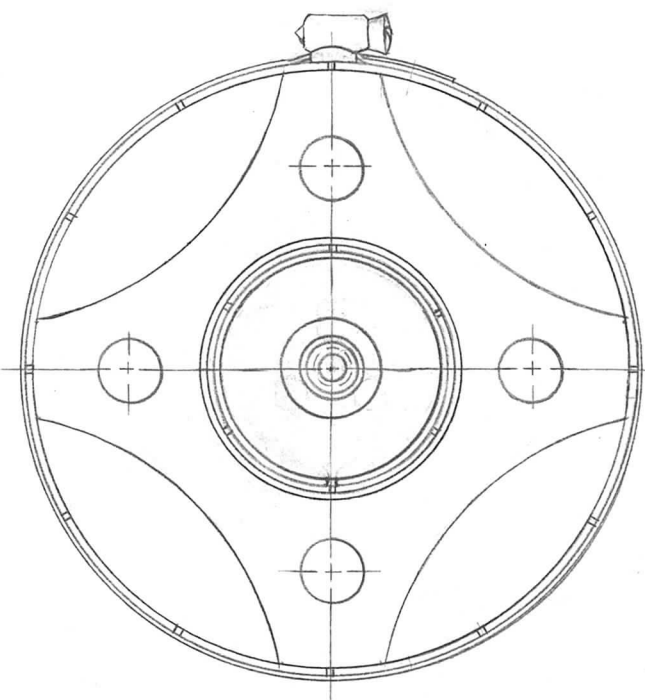
PO-293 0



REF. ID-292

REQ. ITEM	PART NO.	F. BUDETTI	DESCRIPTION	SYMBOL								
			THE TECHNICAL MATERIEL CORP. MAMARONECK, NEW YORK									
0	ORIGINAL RELEASE FOR PRODUCTION	5-27-64	0 A.M.									
X1	3-1/16 R WAS 3-1/8 R CU-129-2155 WAS CU-129-7-55	1-9-64										
SYM	DESCRIPTION	DATE	CH. NO.	DRAFTS	CHECKER	ENG. APP.	MATERIAL					
UNLESS OTHERWISE SPECIFIED DIMENSIONS ARE IN INCHES AND INCLUDE CHEMICALLY APPLIED OR PLATED FINISHES		SCALE	1/2" = 1"						SRG	qa	Roc	
DECIMALS .X ± .05 .XX ± .01 .XXX ± .005		TOLERANCES	FRACTIONS ± 1/64 ANGLES ± 0° 30'		CODE	S401-276 (P/O 601-083)		TYPE & TEMPER	HEAT TREAT. SPEC.	DRAWN	CHECKED	FINAL APPROVAL
										DOB	12/17/63	PO-293 0
								FINISH & SPEC. NO.	ELEC. DES. APP.	MECH. DES. APP.		

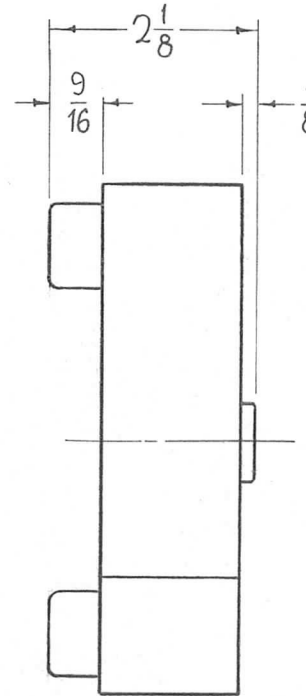
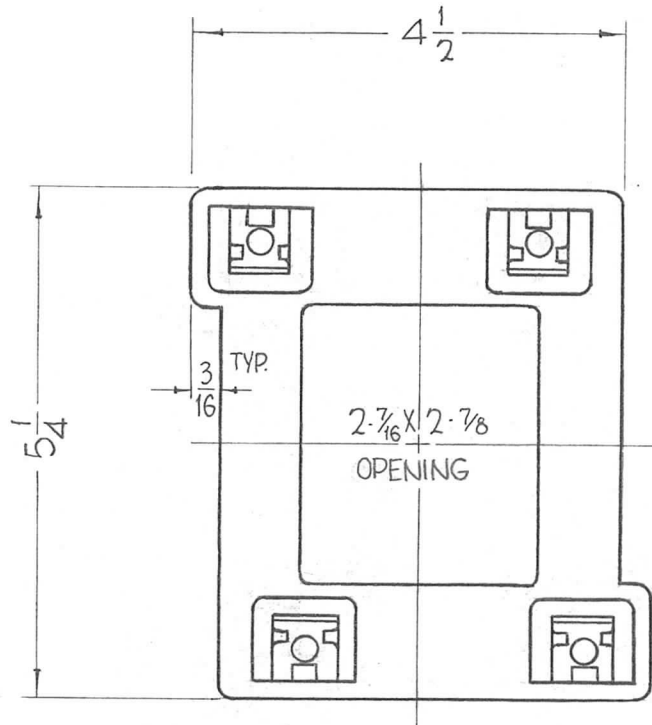
REQ. PER UNIT	USED ON			PO-294 0
	MODEL	ASS'Y. NO.	DATE	
3	GPT-200K	A-3198	11-13-63	



NOTE:
ALL DIMENSIONS FOR REF. ONLY

							REQ. ITEM	PART NO.	F. BUDETTI	DESCRIPTION	SYMBOL	
									THE TECHNICAL MATERIEL CORP. MAMARONECK, NEW YORK			
									UNGASSED COUPLING, 6 1/8			
0	ORIG. RELEASE FOR PROD.	5-16-64		SRG								
SYM	DESCRIPTION	DATE	CH. NO.	DRAFTS	CHECKER	ENG. APP.	MATERIAL					
UNLESS OTHERWISE SPECIFIED DIMENSIONS ARE IN INCHES AND INCLUDE CHEMICALLY APPLIED OR PLATED FINISHES						SCALE	1/2" = 1"			SRG	aa	Ra
						TYPE & TEMPER	HEAT TREAT. SPEC.	DRAWN	CHECKED	FINAL APPROVAL		
DECIMALS .X ± .05 .XX ± .01 .XXX ± .005	TOLERANCES	FRACTIONS ± 1/64 ANGLES ± 0° 30'	CODE								PO-294 0	
						FINISH & SPEC. NO.	ELEC. DES. APP.	MECH. DES. APP.				

REQ. PER UNIT	USED ON			PO-296	0
	MODEL	ASS'Y. NO.	DATE		
1	GPT-200K	RL-147	10-31-63		



ELECTRICAL SPECIFICATIONS
 190-250 VAC
 50/60 CPS.

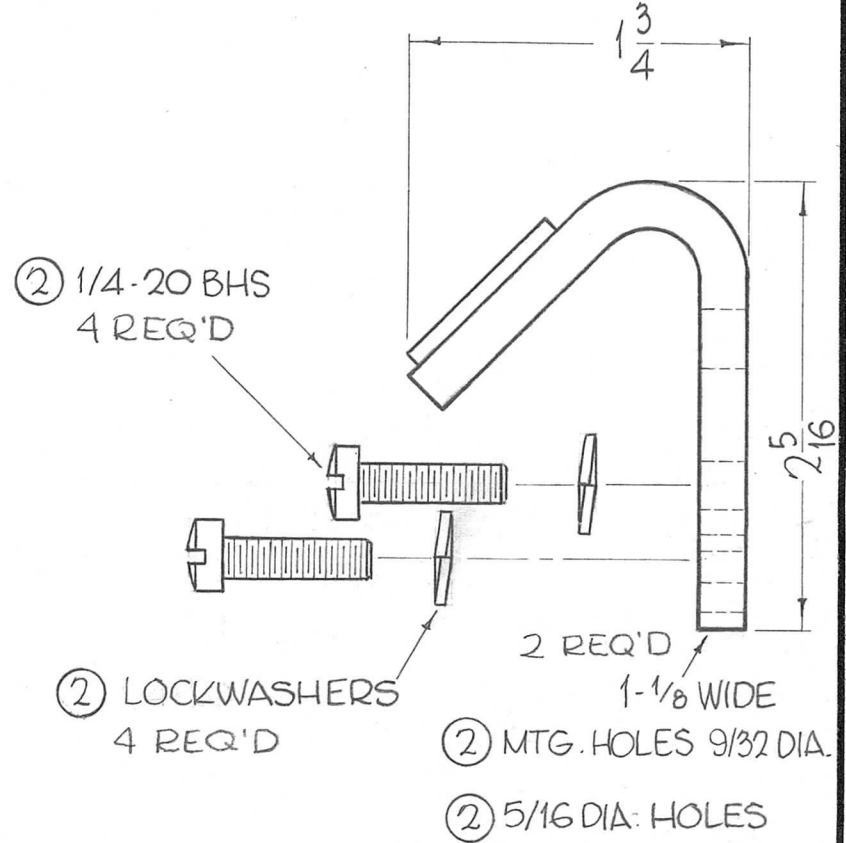
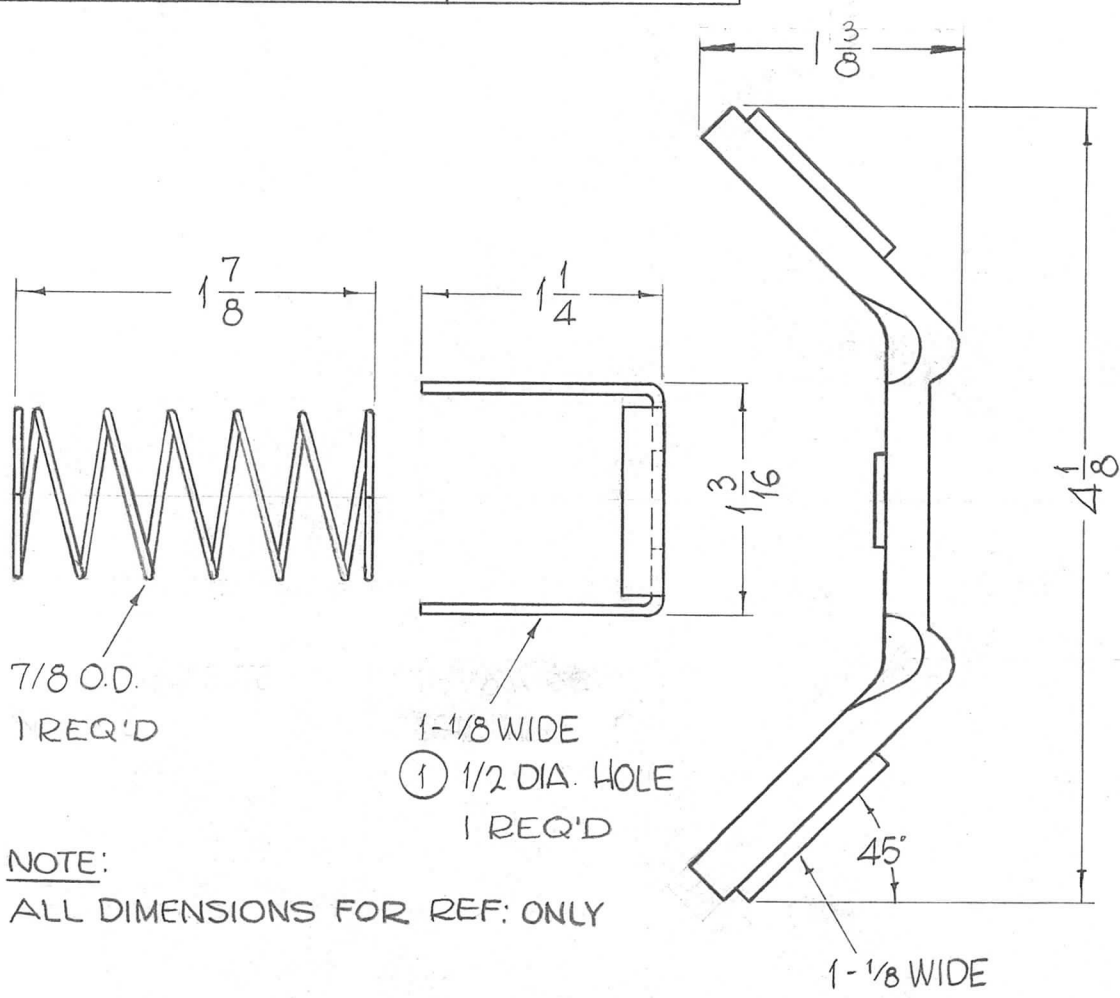
NOTE - ALL DIMENSIONS FOR REFERENCE ONLY.

REQ.	ITEM	PART NO.	F. BUDETTI				DESCRIPTION	SYMBOL
0	ORIG. RELEASE FOR PROD.	5-16-64	SRC				THE TECHNICAL MATERIEL CORP. MAMARONECK, NEW YORK	
XI	ELEC. SPEC WAS 208-220V 60 CYCLES	4-20-64					COIL, ELECTRICAL RELAY, CONTACTOR MAGNETIC	
SYM	DESCRIPTION	DATE	CH. NO.	DRAFTS	CHECKER	ENG. APP.	MATERIAL	
UNLESS OTHERWISE SPECIFIED DIMENSIONS ARE IN INCHES AND INCLUDE CHEMICALLY APPLIED OR PLATED FINISHES		SCALE		1/2" = 1"				John C. Biele
DECIMALS .X ± .05 .XX ± .01 .XXX ± .005	TOLERANCES	FRACTIONS ± 1/64 ANGLES ± 0° 30'	CODE	S401-40(55-501493G3)				TYPE & TEMPER
				HEAT TREAT. SPEC.		DRAWN	CHECKED	FINAL APPROVAL
				FINISH & SPEC. NO.		ELEC. DES. APP.	MECH. DES. APP.	PO-296 0

TMC P/N	DESCRIPTION	QTY OF ITEM
PO297	SINGLE SET	AS SHOWN
PO297-2	TRIPLE SET	TIMES THREE

REQ. PER UNIT	USED ON		
	MODEL	ASS'Y. NO.	DATE
1	GPT-200K	RL-147	10-31-63

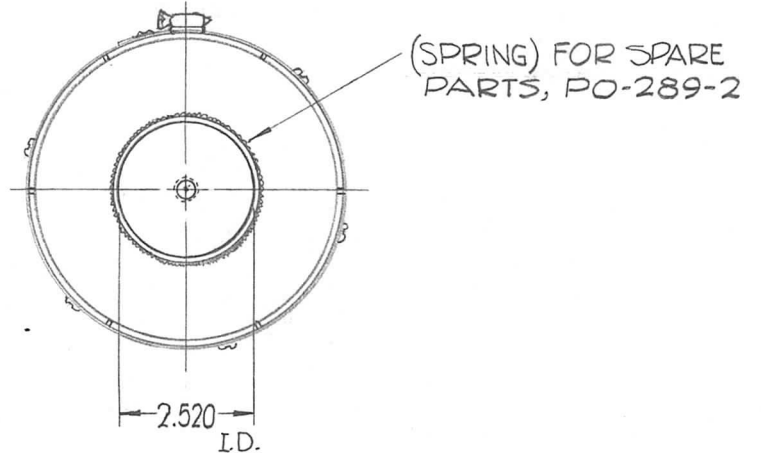
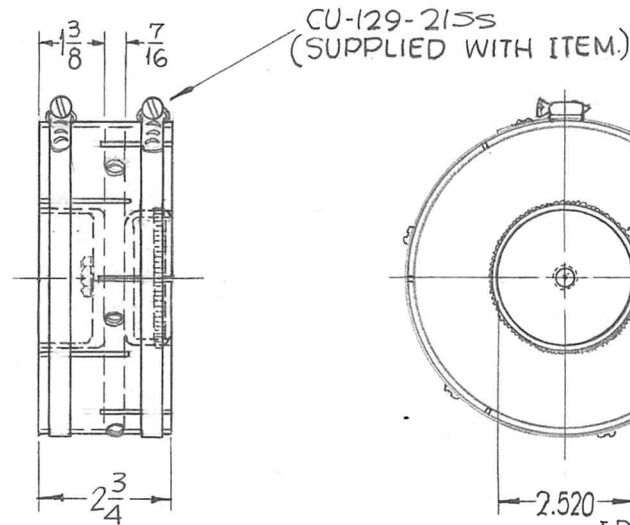
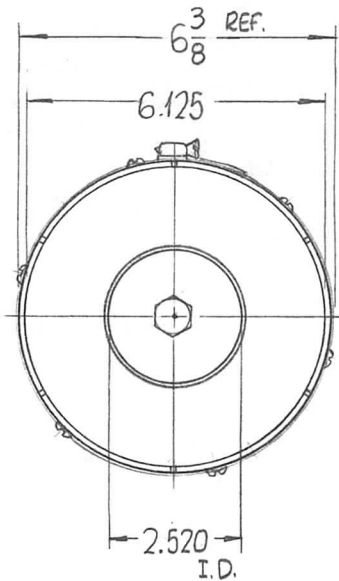
PO-297 A



NOTE:
ALL DIMENSIONS FOR REF: ONLY

						REQ. ITEM	PART NO.	F. BUDETTI	DESCRIPTION	SYMBOL	
						STOCK SIZE		THE TECHNICAL MATERIEL CORP. MAMARONECK, NEW YORK			
A P/N CHART & QTY ADDED						4-29-66	16177	WHD	JOB 203		
O ORIG. RELEASE FOR PROD.						5-16-64		SRG	RL-147 CONTACT KIT		
SYM	DESCRIPTION	DATE	CH. NO.	DRAFTS	CHECKER	ENG. APP.	MATERIAL				
UNLESS OTHERWISE SPECIFIED DIMENSIONS ARE IN INCHES AND INCLUDE CHEMICALLY APPLIED OR PLATED FINISHES		SCALE		1"=1"			John C. Biela				
							TYPE & TEMPER	HEAT TREAT. SPEC.	DRAWN	CHECKED	FINAL APPROVAL
DECIMALS .X ± .05 .XX ± .01 .XXX ± .005		FRACTIONS ± 1/64 ANGLES ± 0° 30'		TOLERANCES			FINISH & SPEC. NO.		ELEC. DES. APP.	MECH. DES. APP.	PO-297 A

REQ. PER UNIT	USED ON			PO-298	O
	MODEL	ASS'Y. NO.	DATE		
2	GPT-200K	AX-397	1-15-64		



NOTE:
DIMENSIONS FOR REF. ONLY.

REF. ID-292

REQ. ITEM	PART NO.	F. BUDETTI	DESCRIPTION	SYMBOL								
			THE TECHNICAL MATERIEL CORP. MAMARONECK, NEW YORK									
			COUPLING LINE, RF. TRANSMISSION									
			6 1/8									
0	ORIGINAL RELEASE FOR PRODUCTION	5-27-64	O	A.M.								
SYM	DESCRIPTION	DATE	CH. NO.	DRAFTS	CHECKER	ENG. APP.	MATERIAL					
UNLESS OTHERWISE SPECIFIED DIMENSIONS ARE IN INCHES AND INCLUDE CHEMICALLY APPLIED OR PLATED FINISHES		SCALE	1/4" = 1"						SRG	aa	RCC	
DECIMALS .X ± .05 .XX ± .01 .XXX ± .005	TOLERANCES	FRACTIONS ± 1/64 ANGLES ± 0° 30'	CODE	S401-276 (P/O-601-083)				TYPE & TEMPER	HEAT TREAT. SPEC.	DRAWN	CHECKED	FINAL APPROVAL
											PO-298	O
							FINISH & SPEC. NO.	ELEC. DES. APP.	MECH. DES. APP.			