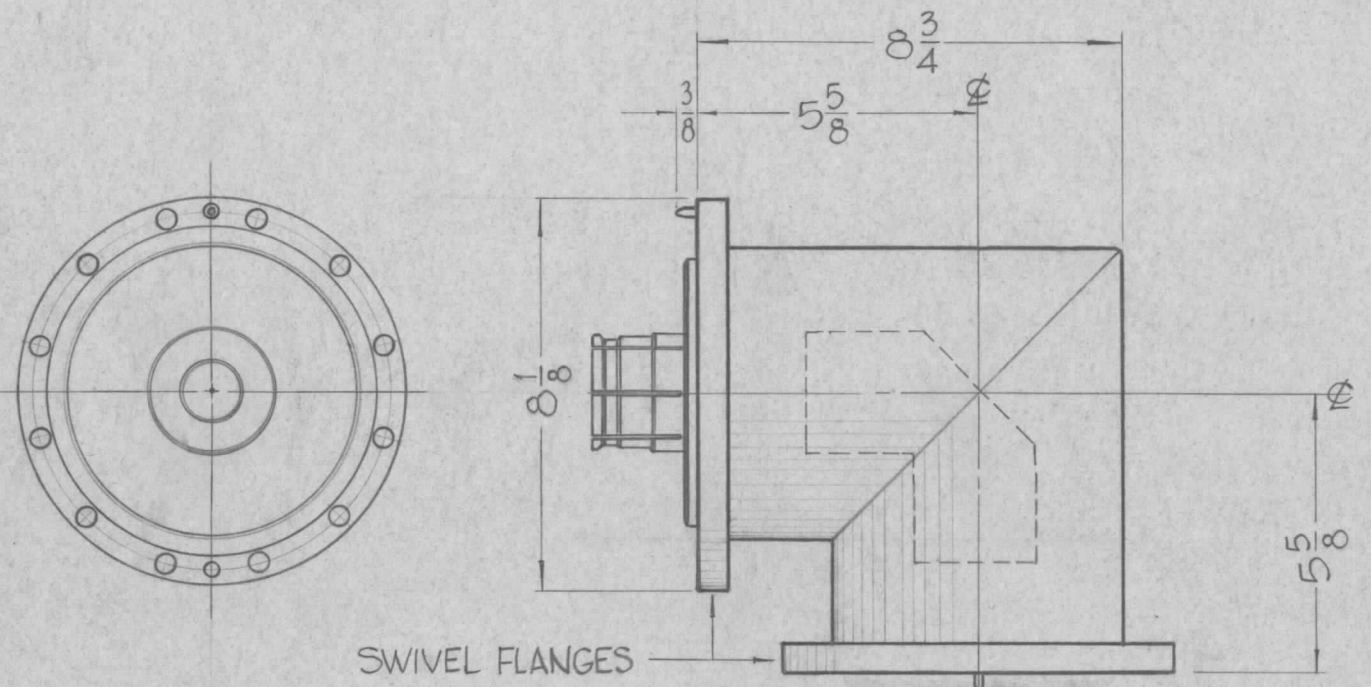
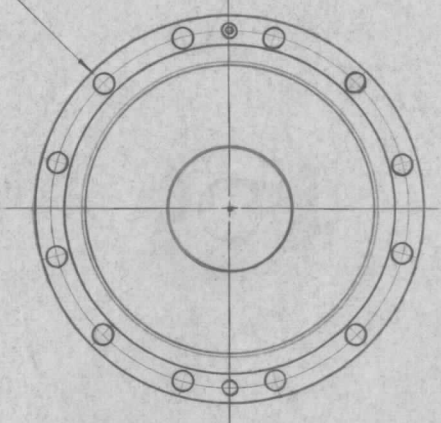


A  
PO-263



(12) 13/32 DIA. HOLES  
EQUALLY SPACED  
30° APART ON A  
7-3/8 DIA.  
(BOTH FLANGES)



REVISIONS

SYM	DESCRIPTION	DATE	E.M.N. NO.	DRAFT	CHKD	APPD
0	ORIGINAL RELEASE FOR PRODUCTION	5-16-64		SRG		
A	ON HDW. NOTE, "O"-RING, TMC P/N (PO-256) DELE.	8.14.64	11953	WB	W	W

TMC PT. NO.	MFG. NO.	OHMS	VWSR (VOLTAGE STANDING WAVE RATIO)
PO-263-50	1073M	50	*LESS THAN 1.01 UP TO 450MC
PO-263-70	1063M	75	*LESS THAN 1.01 UP TO 450MC

\* SPECIFY FREQUENCY USE FOR ABOVE 450 MC.

HARDWARE — SPADE PARTS

"O" RING, TMC NO. PO-256  
 INNER CONNECTOR, TMC NO. PO-255  
 FINNED CONDUCTOR, TMC NO. PO-257  
 3/8-16 HEXAGON HEAD BOLTS, LOCK WASHERS AND NUTS.

REQ'D.	ITEM	PART NUMBER	DESCRIPTION	SYMBOL
F. BUDETTI LIST OF MATERIAL				
MATERIAL			THE TECHNICAL MATERIEL CORP. MAMARONECK, NEW YORK	
FINISH			TITLE ELBOW, TRANSMISSION LINE, 6-1/8	
UNLESS OTHERWISE SPECIFIED DIMENSIONS ARE IN INCHES AND INCLUDE CHEMICALLY APPLIED OR PLATED FINISHES			DRAWN John C. Biele	DATE 1-3-63
DECIMALS .X ± .05 .XX ± .01 .XXX ± .005			CHECKED WB	DATE 5/13/64
FRACTIONS ± 1/64 ANGLES ± 0° 30'			ELECT. DES. WB	DATE 5/13/64
TOLERANCES			MECH. DES. WB	DATE 5/13/64
FINAL APPROVAL KAP				DATE
PO-263				A
SHEET				REV. LTR.

NOTES

THE CONTENTS OF THIS DRAWING ARE THE EXCLUSIVE PROPERTY OF THE TECHNICAL MATERIEL CORP. ITS UNAUTHORIZED USE OR REPRODUCTION IN WHOLE OR IN PART IS STRICTLY FORBIDDEN.

GPT-200K		
Q'TY./UNIT	MODEL USED ON	ASS'Y. NO.
SCALE	CODE	S401-31