

THE CONTENTS OF THIS DRAWING ARE THE EXCLUSIVE PROPERTY OF THE TECHNICAL MATERIEL CORP. ITS UNAUTHORIZED USE OR REPRODUCTION IN WHOLE OR IN PART IS STRICTLY FORBIDDEN.

REQ. PER UNIT

USED ON

MODEL

ASS'Y. NO.

DATE

1

SPU-2

8-24-62

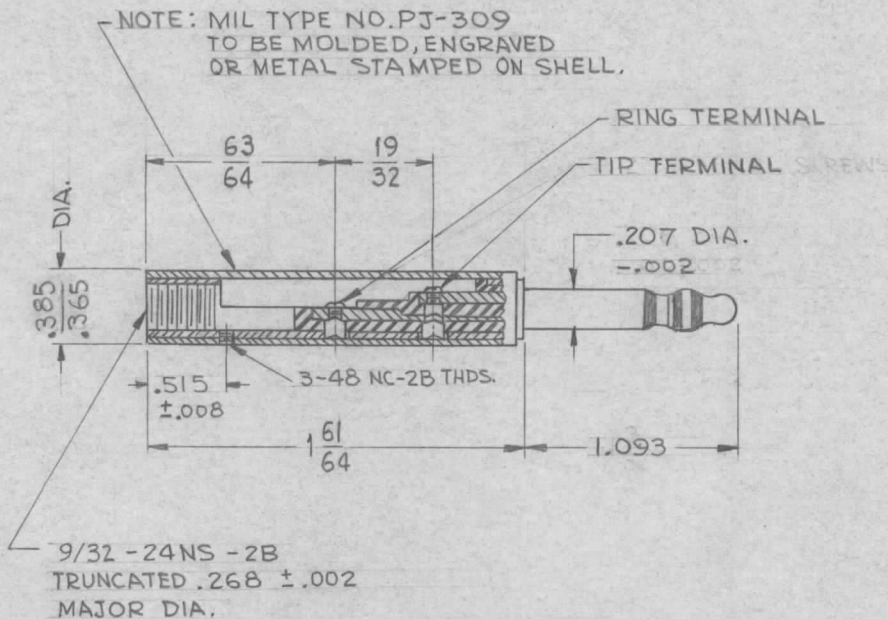
PJ-309

SPECIFICATIONS:

- TIP ROD
  - RING SLEEVE
  - BODY
  - SCREWS
  - TERMINALS - BRASS, HOT TINNED
  - INSULATION - ETHYL CELLULOSE, TYPE PER MIL-M-3412
  - SHELL - RED PLASTIC, PER MIL-P-642 A
- MACHINED FROM BRASS  
NATURAL FINISH

NOTE:

MATES WITH MILITARY JACK JJ-083, JJ-033, & JJ-133.



REF: MIL TYPE PJ-309 PER MIL-P-642 A

REQ.	ITEM	PART NO.	DESCRIPTION				SYMBOL	
			THE TECHNICAL MATERIEL CORP. MAMARONECK, NEW YORK					
			PLUG, TELEPHONE					
			(LITTEL)					
SYM	DESCRIPTION	DATE	CH. NO.	DRAFTS	CHECKER	ENG. APP.		
UNLESS OTHERWISE SPECIFIED:		SCALE: —						
DIMENSIONS ARE IN INCHES		MAXIMUM ALLOWABLE TOLERANCES HAVE BEEN DETERMINED AND ANY DEVIATIONS WILL BE CAUSE FOR REJECTION. REMOVE ALL BURRS AND SHARP EDGES						
TOLERANCES ON								
FRAC. ± 1/64 DEC. ± .005 ANGLES ± 1/2°								
		TYPE & TEMPER		HEATTREAT. SPEC.		DRAWN	CHECKED	FINAL APPROVAL
								PJ-309
		FINISH & SPEC. NO.		ELEC. DES. APP.		MECH. DES. APP.		