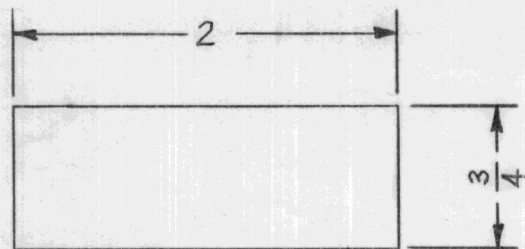


| | | | | |
|----------------------|---------|------------|------|--------|
| REQ. PER. UNIT | USED ON | | | NP-300 |
| | MODEL | ASS'Y. NO. | DATE | |
| | | | | |

MODIFIED BY ADDITION OF
FIELD CHANGE # 1-AN/URA-24
UNDER CONTRACT NObsr-75760



ACTUAL SIZE

NOTE:

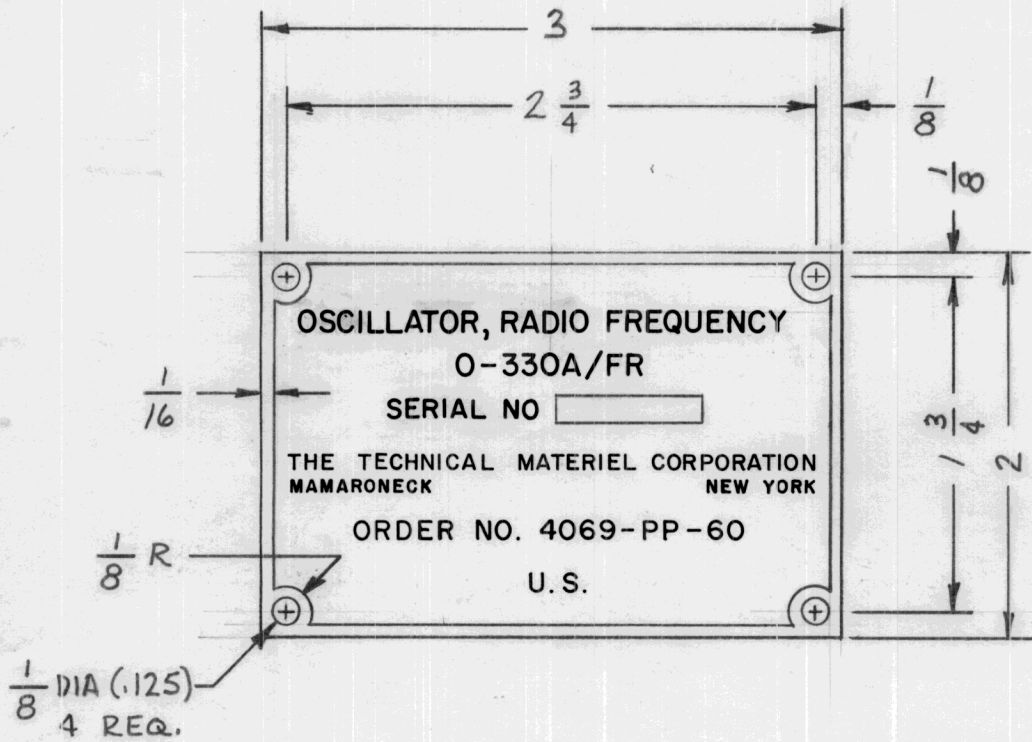
ALUMINUM COLORED LETTERING,
BACKGROUND TO BE BLACK, TO BE
SUPPLIED W/#583 ADHESIVE BACKING.

THIS NAMEPLATE WILL BE MOUNTED
ON ENAMELED ALUMINUM PANELS

REF.: IN Acc/WITH MIL-P-19834

| | | | | | | | | REQ. | ITEM | PART NO. | DESCRIPTION | | | SYMBOL |
|----------------|------|--------------|--|---------|--------|---------|-----------|--------------------|-------------------|------------------------------|----------------|--------------------|--------------------|--------|
| | | | | | | | | .003 to .005 | | THE TECHNICAL MATERIEL CORP. | | | | |
| | | | | | | | | STOCK SIZE | | MAMARONECK, NEW YORK | | | | |
| | | | | | | | | ALUMINUM FOIL | | NAMEPLATE, IDENTIFICATION, | | | | |
| | | | | | | | | MATERIAL | | MODEL ATS MOD. KIT | | | | |
| ISSUE | ITEM | CHANGED FROM | DATE | CH. NO. | DRAFTS | CHECKER | ENG. APP. | ANODIZED | | MJT | 9-11-59 | <i>[Signature]</i> | <i>[Signature]</i> | |
| TOLERANCES | | | SCALE: <i>[Symbol]</i> | | | | | TYPE & TEMPER | HEAT TREAT. SPEC. | DRAWN | CHECKED | FINAL APPROVAL | | |
| DEC. DIM. ± | | | MAXIMUM ALLOWABLE TOLERANCES HAVE BEEN DETERMINED AND ANY DEVIATIONS WILL BE CAUSE FOR REJECTION. REMOVE ALL BURRS AND SHARP EDGES | | | | | SEE NOTE | | | | NP-300 | | |
| FRAC. DIM. ± | | | | | | | | FINISH & SPEC. NO. | | ELEC. DES. APP | MECH. DES. APP | | | |
| ANGULAR DIM. ± | | | | | | | | | | | | | | |

| | | | | |
|---------------|---------|------------|---------|--------|
| REQ. PER UNIT | USED ON | | | NP-308 |
| | MODEL | ASS'Y. NO. | DATE | |
| 1 | VOX-3 | | 1-26-60 | |



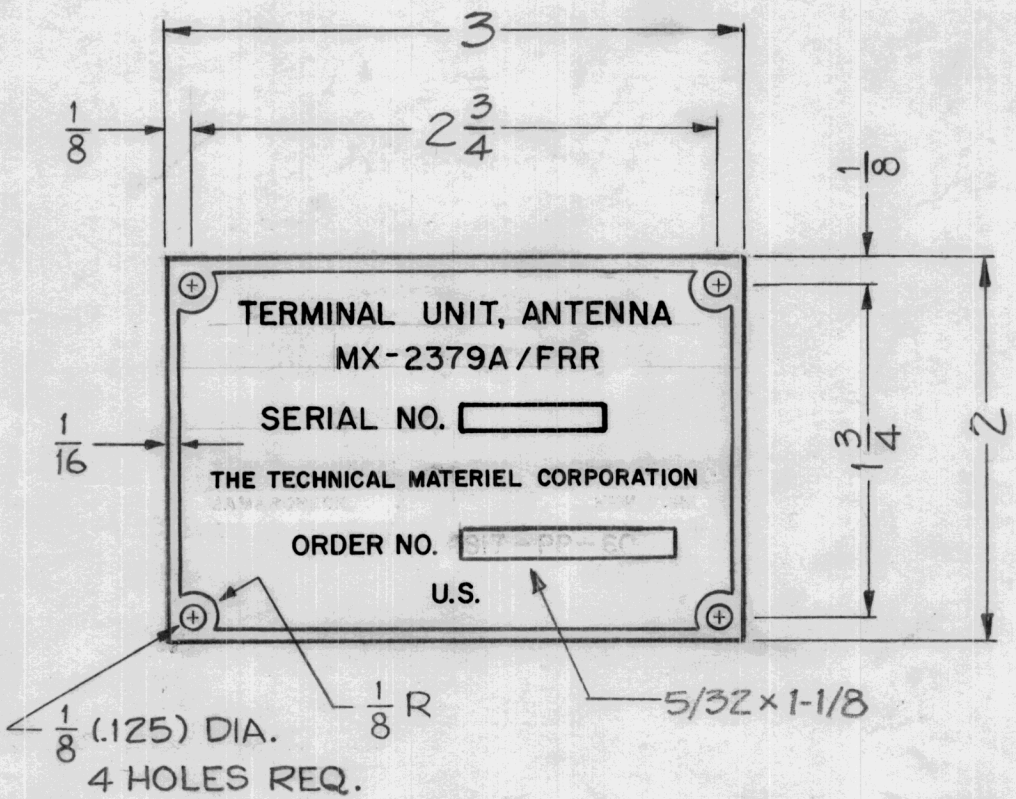
NOTE: FINISH
BLACK MATTE BACKGROUND &
S-113 FUNGUS RESISTANT VARNISH

NAMEPLATE TO BE MANUFACTURED IN ACCORDANCE WITH MIL-M-13231A

REF: SIGNAL CORP.

| | | | | | | | | REQ. | ITEM | PART NO. | DESCRIPTION | SYMBOL | |
|---|------|--------------|--|---------|--------|---------|-----------|--------------------|------------------|-----------------|--|----------------|--|
| | | | | | | | | | | .032 THICK | THE TECHNICAL MATERIEL CORP. MAMARONECK, NEW YORK NAMEPLATE MODEL VOX-3 | | |
| | | | | | | | | | | STOCK SIZE | | | |
| | | | | | | | | | | ALUMINUM | | | |
| | | | | | | | | | | MATERIAL | | | |
| ISSUE | ITEM | CHANGED FROM | DATE | CH. NO. | DRAFTS | CHECKER | ENG. APP. | | | | | | |
| TOLERANCES | | | SCALE: <i>H</i> | | | | | 250 | | MJT 11-14-59 | <i>hda</i> | <i>PRB</i> | |
| DEC. DIM. ± FRAC. DIM. ± ANGULAR DIM. ± | | | MAXIMUM ALLOWABLE TOLERANCES HAVE BEEN DETERMINED AND ANY DEVIATIONS WILL BE CAUSE FOR REJECTION. REMOVE ALL BURRS AND SHARP EDGES | | | | | TYPE & TEMPER | HEATTREAT. SPEC. | DRAWN | CHECKED | FINAL APPROVAL | |
| | | | | | | | | SEE NOTE | | | | | |
| | | | | | | | | FINISH & SPEC. NO. | | ELEC. DES. APP | MECH. DES. APP | NP-308 | |

| | | | |
|----------------|---------|------------|----------|
| REQ. PER. UNIT | USED ON | | NP-314 B |
| | MODEL | ASS'Y. NO. | |
| 1 | RTB-4 | | 1-6-60 |



NOTE ~ FINISH ~
 BLACK MATTE BACKGROUND
 AND S113 FUNGUS RESISTANT
 VARNISH.

NAMEPLATE TO BE MANUFACTURED
 IN ACCORDANCE WITH MIL-M-13231
 APPLICABLE ORDER NO. WILL BE
 STEEL STAMPED.

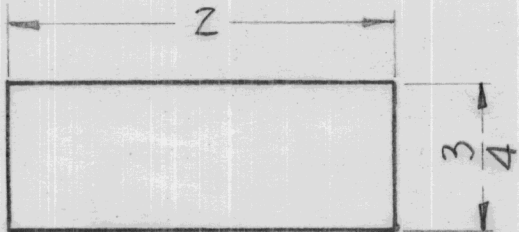
REF ~ SIGNAL CORPS.

| ISSUE | ITEM | CHANGED FROM | DATE | CH. NO. | DRAFTS | CHECKER | ENG. APP. | REQ. ITEM | PART NO. | DESCRIPTION | SYMBOL | |
|----------------|------|---|--|---------|--------|---------|-----------|--------------------|------------------|------------------------------|----------------|----------------|
| | | | | | | | | .032 THICK | | THE TECHNICAL MATERIEL CORP. | | |
| | | | | | | | | STOCK SIZE | | MAMARONECK, NEW YORK | | |
| B | 1 | MAM'K, N.Y. ON PICTORIAL DELETED | 7/28/60 | 11955 | Boon | @ | COO | ALUMINUM | | NAMEPLATE | | |
| A | 1 | ORDER NO. 4817-PP-60 REPLACED BY ORDER NO BLOCK | 5/19/60 | 2320 | DM | JWS | DM | MATERIAL | | MODEL RTB-4 | | |
| TOLERANCES | | | SCALE: | | | | | 250 | | J.C. Biele | FILE | ARB |
| DEC. DIM. ± | | | MAXIMUM ALLOWABLE TOLERANCES HAVE BEEN DETERMINED AND ANY DEVIATIONS WILL BE CAUSE FOR REJECTION. REMOVE ALL BURRS AND SHARP EDGES | | | | | TYPE & TEMPER | HEATTREAT. SPEC. | DRAWN | CHECKED | FINAL APPROVAL |
| FRAC. DIM. ± | | | | | | | | SEE NOTE | | | | |
| ANGULAR DIM. ± | | | | | | | | FINISH & SPEC. NO. | | ELEC. DES. APP | MECH. DES. APP | |

| | |
|--------------|--------------|
| TMC PART NO. | CONTRACT NO. |
| NP 337 | 81202 |
| NP 337-2 | BLANK |

| | | | | |
|---------------|---------|------------|--------|---|
| REQ. PER UNIT | USED ON | | NP-337 | D |
| | MODEL | ASS'Y. NO. | | |
| | FFR | | 6-7-60 | |

MODIFIED TO R-5007A/FRR-502
 BY ADDITION OF FC #1-AN/FRR-49(V)
 UNDER CONTRACT NObsr -



NOTES

1. ALUMINUM COLORED LETTERING, BACKGROUND TO BE BLACK, TO BE SUPPLIED w/#583 ADHESIVE BACKING.
2. THIS NAMEPLATE WILL BE MOUNTED ON ENAMELED PANELS.
3. CONTRACT NO. BLOCK: $\frac{1}{8} \times \frac{5}{8}$
4. NP 337 OBSOLETE, DIRECTLY REPLACED BY NP 337-2. NP 337 FOR SPARE PARTS USE ONLY.

REF: IN ACC/WITH MIL-P-19834

| ISSUE | ITEM | CHANGED FROM | DATE | CH. NO. | DRAFTS | CHECKER | ENG. APP. | REQ. ITEM | PART NO. | DESCRIPTION | SYMBOL | | | | |
|--|------|---------------------------------------|---------|---------|--------|---------|-----------|--------------------|---------------|--|--------|----------------|--|----------------|--|
| D | | REV & UPDATED | 5/27/69 | 19458 | GE | Joe | EFM/jk | | | | | | | | |
| C | 1 | NOMENCLATURE REVISED | 6/2/60 | ~ | DM | Joe | AMP | | .003 to .005 | THE TECHNICAL MATERIEL CORP. MAMARONECK, NEW YORK | | | | | |
| B | 1 | NOMENCLATURE CLARIFIED | 7-21-60 | ~ | DM | Joe | AMP | | STOCK SIZE | NAMEPLATE, IDENTIFICATION | | | | | |
| A | 1 | Nomenclature No Was R-5007()/FRR-502 | 7/19/60 | - | DM | Joe | AMP | | ALUMINUM FOIL | MODEL FFR MOD. KIT (KIT 151) | | | | | |
| TOLERANCES | | | | | | | | ANODIZED | | DRAWN | | CHECKED | | FINAL APPROVAL | |
| SCALE: | | | | | | | | TYPE & TEMPER | | HEATTREAT. SPEC. | | | | | |
| DEC. DIM. ± FRAC. DIM. ± ANGULAR DIM. ± | | | | | | | | SEE NOTE / | | | | | | NP-337 D | |
| MAXIMUM ALLOWABLE TOLERANCES HAVE BEEN DETERMINED AND ANY DEVIATIONS WILL BE CAUSE FOR REJECTION. REMOVE ALL BURRS AND SHARP EDGES | | | | | | | | FINISH & SPEC. NO. | | ELEC. DES. APP | | MECH. DES. APP | | | |

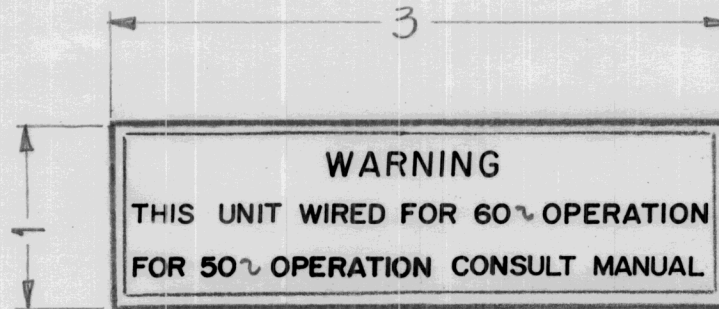
| | | | | |
|---------------|---------|------------|--------|--------|
| REQ. PER UNIT | USED ON | | | NP-348 |
| | MODEL | ASS'Y. NO. | DATE | |
| 1 | CPP-2 | | 8-1-60 | |

NOTE ~ ALL GOTHIC,
LETTERING & BORDER
TO BE RED.

BACKGROUND TO BE
ALUMINUM CLEAR
ANODIZED.

ADHESIVE BACKING
WATER SOLVENT

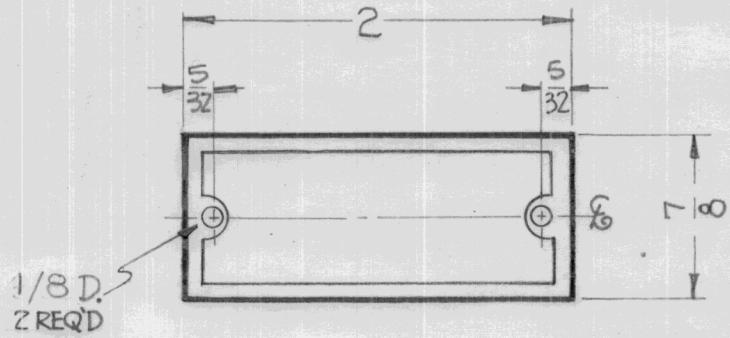
APPLICATION:
PAINTED SURFACE.



| | | | | | | | | REQ. | ITEM | PART NO. | DESCRIPTION | SYMBOL | | | | | |
|----------------|------|--------------|--|---------|--------|---------|-----------|--------------------|------|------------------------------|-------------|----------------|--|----------------|--|--|--|
| | | | | | | | | .003 TO .005 | | THE TECHNICAL MATERIEL CORP. | | | | | | | |
| | | | | | | | | STOCK SIZE | | MAMARONECK, NEW YORK | | | | | | | |
| | | | | | | | | Aluminum foil | | PLATE, INSTRUCTION | | | | | | | |
| | | | | | | | | MATERIAL | | | | | | | | | |
| ISSUE | ITEM | CHANGED FROM | DATE | CH. NO. | DRAFTS | CHECKER | ENG. APP. | | | DRAWN | | CHECKED | | FINAL APPROVAL | | | |
| TOLERANCES | | | SCALE: DO NOT SCALE | | | | | | | DO NOT SCALE | | [Signature] | | [Signature] | | | |
| DEC. DIM. ± | | | MAXIMUM ALLOWABLE TOLERANCES HAVE BEEN DETERMINED AND ANY DEVIATIONS WILL BE CAUSE FOR REJECTION. REMOVE ALL BURRS AND SHARP EDGES | | | | | TYPE & TEMPER | | HEATTREAT. SPEC. | | | | | | | |
| FRAC. DIM. ± | | | | | | | | SEE NOTE | | | | | | | | | |
| ANGULAR DIM. ± | | | | | | | | | | | | | | | | | |
| | | | | | | | | FINISH & SPEC. NO. | | ELEC. DES. APP | | MECH. DES. APP | | NP-348 | | | |

| | | | | |
|----------------|---------|------------|---------|----------|
| REQ. PIER UNIT | USED ON | | | NP-354 A |
| | MODEL | ASS'Y. NO. | DATE | |
| | | | 9-20-60 | |

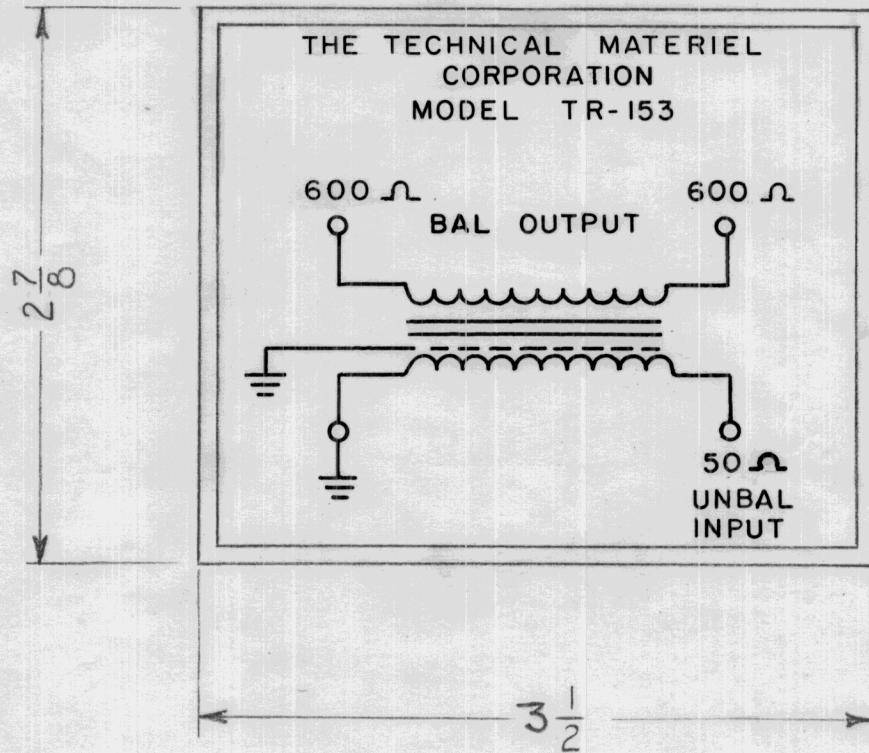
MANUFACTURED BY
TMC (CANADA) LTD
OTTAWA, ONTARIO
CANADA



NOTE ~ ALL LETTERING APPROX. TO SCALE.

| | | | | | | | REQ. ITEM | PART NO. | DESCRIPTION | SYMBOL | |
|---|------|-----------------------|--|---------|--------|---------|--|---------------------------|------------------------------|----------|----------------|
| | | | | | | | | 032 | THE TECHNICAL MATERIEL CORP. | | |
| | | | | | | | | STOCK SIZE | MAMARONECK, NEW YORK | | |
| A | 1 | @HOLES WERE 3/32 DIA. | 10-4-62 | 7291 | gs | Jde | ALUMINUM | NAMEPLATE, IDENTIFICATION | | | |
| ISSUE | ITEM | CHANGED FROM | DATE | CH. NO. | DRAFTS | CHECKER | ENG. APP. | | | | |
| TOLERANCES | | | SCALE: Full | | | | 250 | | | | |
| DEC. DIM. ± FRAC. DIM. ± ANGULAR DIM. ± | | | MAXIMUM ALLOWABLE TOLERANCES HAVE BEEN DETERMINED AND ANY DEVIATIONS WILL BE CAUSE FOR REJECTION. REMOVE ALL BURRS AND SHARP EDGES | | | | TYPE & TEMPER BLACK MATTE BACKGROUND CLEAR LACQUER | HEATTREAT. SPEC. | DRAWN | CHECKED | FINAL APPROVAL |
| | | | | | | | FINISH & SPEC. NO. | ELEC. DES. APP | MECH. DES. APP | NP-354 A | |

| | | | | | |
|----------------|---------|------------|---------|--------|---|
| REQ. PER. UNIT | USED ON | | | NP-358 | A |
| | MODEL | ASS'Y. NO. | DATE | | |
| 1 | TR-153 | | 1-16-61 | | |



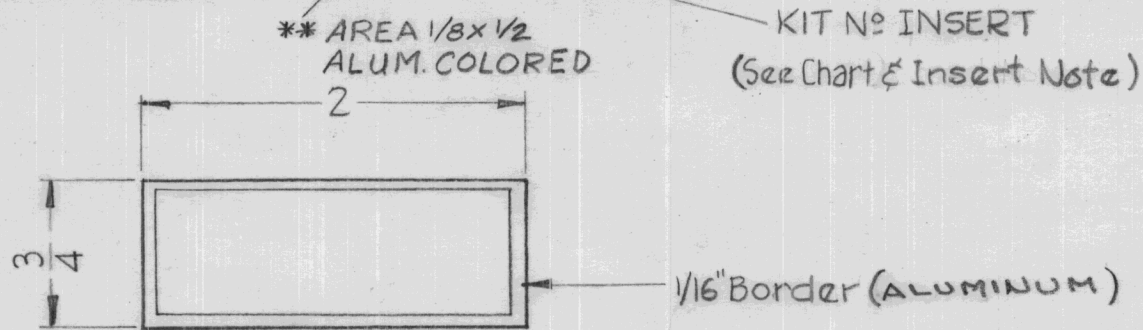
NOTE: All Lettering, Symbols, & Border to be black.
 Background to be Aluminum Clear Anodized.
 Adhesive Backing. Water Solvent.
 APPLICATION:
 Painted Surface.

| | | | | | | | REQ. ITEM | PART NO. | DESCRIPTION | SYMBOL | | |
|---|---|--|---|---------|--------|---------|--------------------|-----------------------------------|-------------------------------|------------------------------------|----------|--|
| | | | | | | | .003 to .005 | | THE TECHNICAL MATERIEL CORP. | | | |
| | | | | | | | STOCK SIZE | | MAMARONECK, NEW YORK | | | |
| A | 1 | 50 Ω UNBAL INPUT WAS 50 UNBAL INPUT | 3-1-61 | A226 | M.A.F. | JCB | OS | Aluminum Foil | NAMEPLATE IDENTIFICATION | | | |
| ISSUE ITEM | | CHANGED FROM | DATE | CH. NO. | DRAFTS | CHECKER | ENG. APP. | MATERIAL | | | | |
| TOLERANCES | | | SCALE: | | | | | | | | | |
| DEC. DIM. ± FRAC. DIM. ± ANGULAR DIM. ± | | | MAXIMUM ALLOWABLE TOLERANCES HAVE BEEN DETERMINED AND ANY DEVIATIONS WILL BE CAUSE FOR REJECTION. REMOVE ALL BURRS AND SHARP EDGES | | | | | TYPE & TEMPER HEATTREAT. SPEC. | | DRAWN CHECKED FINAL APPROVAL | | |
| | | | | | | | See Note | | | | NP-358 A | |
| | | | | | | | FINISH & SPEC. NO. | | ELEC. DES. APP MECH. DES. APP | | | |

| TMC N°. | MODEL INSERT | KIT N° INSERT |
|----------|--------------|---------------|
| NP-360-1 | AFC-1A | 107 |
| NP-360-2 | MSR-6A | 107 |
| NP-360-3 | GPT-40K | 105 |
| NP-360-4 | GPT-40K | 106 |
| NP-360-5 | RFC-1A | 224 |
| NP-360-6 | CHG-2B | 224 |
| NP-360-7 | PAL 350B | 232A |
| NP-360-8 | * NONE | ** NONE |
| NP-360-9 | SBT-1K5X2 | KIT 31B |

| REQ. PER. UNIT | USED ON | | NP-360 | E |
|----------------|---------|------------|---------|---|
| | MODEL | ASS'Y. NO. | | |
| | | | 3-15-61 | |

MODIFIED TO MODEL **AFC-1A**
 BY ADDITION OF MODIFICATION KIT
KIT-107



NOTE:
 ALUMINUM COLORED LETTERING, BACKGROUND TO BE BLACK AND SUPPLIED w/#583 ADHESIVE BACKING.
 THIS NAMEPLATE WILL BE MOUNTED ON ENAMELED PANELS.
 INSERT NOTE
 ALL APPROPRIATE "INSERTS" WHEN REQ'D, WILL BE ETCHED IN BY NAME-PLATE MANUFACTURER.

| | | | | | | |
|---|---------------------------------|---------|-------|------|------|------|
| E | -9 ADDED | 1-6-67 | 17595 | WHD | JCB | 1/16 |
| D | -8***ADDED INSERT NOTE DELETED. | 1/12/66 | 15523 | R.V. | JCB | R |
| C | NP 360-7 ADDED | 7/16/65 | 14475 | X.V. | JCB | MIN |
| B | 1 NP 360-5 & 6 ADDED | 2-15-65 | 13460 | P.F. | JCB | J |
| A | 1 NP 360-3 & 4 ADDED | 7-18-61 | 5298 | WAF | R.U. | L6 |

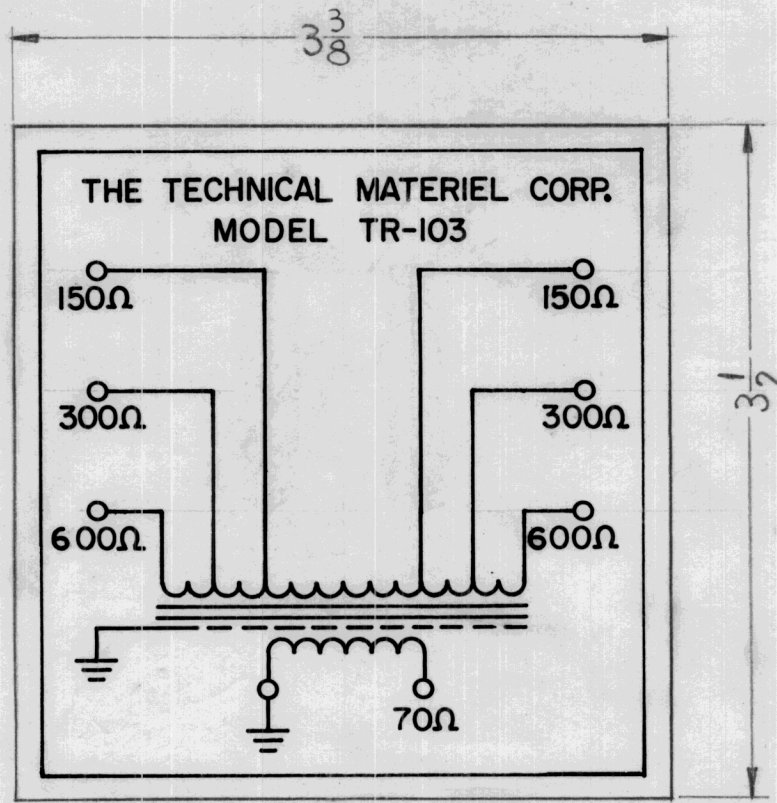
REF. IN ACC/WITH MIL-P-19834

| ISSUE | ITEM | CHANGED FROM | DATE | CH. NO. | DRAFTS | CHECKER | ENG. APP. |
|----------------|------|--|------|---------|--------|---------|-----------|
| TOLERANCES | | SCALE: | | | | | |
| DEC. DIM. ± | | MAXIMUM ALLOWABLE TOLERANCES HAVE BEEN DETERMINED AND ANY DEVIATIONS WILL BE CAUSE FOR REJECTION. REMOVE ALL BURRS AND SHARP EDGES | | | | | |
| FRAC. DIM. ± | | | | | | | |
| ANGULAR DIM. ± | | | | | | | |

| REQ. | ITEM | PART NO. | DESCRIPTION | SYMBOL |
|------|------|--------------------|--|----------------|
| | | .003 TO .005 | THE TECHNICAL MATERIEL CORP. MAMARONECK, NEW YORK | |
| | | ALUMINUM FOIL | NAMEPLATE, MODIFICATION | |
| | | ANODIZED | | |
| | | TYPE & TEMPER | HEAT TREAT. SPEC. | |
| | | SEE NOTE | | |
| | | FINISH & SPEC. NO. | ELEC. DES. APP | MECH. DES. APP |
| | | | D. J. [Signature] | JCB |
| | | | NP-360 | E |

STANDARD DRAWING

| | | | | | |
|----------------|---------|------------|---------|--------|---|
| REQ. PER. UNIT | USED ON | | | NP-367 | B |
| | MODEL | ASS'Y. NO. | DATE | | |
| 1 | TR-103 | | 5-25-61 | | |

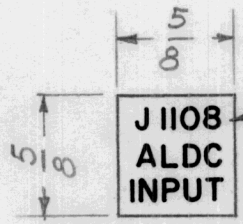


NOTE ~ All lettering, Symbols & Border to be black.
 Background to be Aluminum Clear Anodized.
 Pressure Sensitive Backing 3M P/n, Y-9164 Or Equivalent
 APPLICATION ~ Painted Surface.

| | | | | | | | REQ. | ITEM | PART NO. | DESCRIPTION | | SYMBOL | | |
|----------------|------|---------------------------------|--|---------|--------|---------|--------------------|---------------|---------------------------|------------------------------|---------|----------------|--|---|
| | | | | | | | | | .003 TO .005 | THE TECHNICAL MATERIEL CORP. | | | | |
| | | | | | | | | | STOCK SIZE | MAMARONECK, NEW YORK | | | | |
| B | | "PRESSURE SENSITIVE" NOTE ADDED | 12.14.66 | 17417 | WTO | JCB | | | NAMEPLATE, IDENTIFICATION | | | | | |
| A | 1 | IN PICT. 600Ω WAS 700Ω | 9-4-63 | 9793 | AK | JCB | | ALUMINUM FOIL | | | | | | |
| ISSUE | ITEM | CHANGED FROM | DATE | CH. NO. | DRAFTS | CHECKER | ENG. APP. | MATERIAL | | | | | | |
| TOLERANCES | | | SCALE: | | | | TYPE & TEMPER | | HEATTREAT. SPEC. | DRAWN | CHECKED | FINAL APPROVAL | | |
| DEC. DIM. ± | | | MAXIMUM ALLOWABLE TOLERANCES HAVE BEEN DETERMINED AND ANY DEVIATIONS WILL BE CAUSE FOR REJECTION. REMOVE ALL BURRS AND SHARP EDGES | | | | SEE NOTE | | | | | NP-367 | | |
| FRAC. DIM. ± | | | | | | | FINISH & SPEC. NO. | | ELEC. DES. APP | MECH. DES. APP | | | | B |
| ANGULAR DIM. ± | | | | | | | | | | | | | | |

| TMC PART NO. | SYMBOL INSERT | USED ON |
|--------------|---------------|---------------|
| NP-380-1 | J1108 | CHG (KIT-109) |
| NP-380-2 | J1113 | SBE (KIT-110) |

| REQ. PER. UNIT | USED ON | | | NP-380 | A |
|----------------|---------|------------|---------|--------|---|
| | MODEL | ASS'Y. NO. | DATE | | |
| 1 | KIT-109 | | 6-12-61 | | |

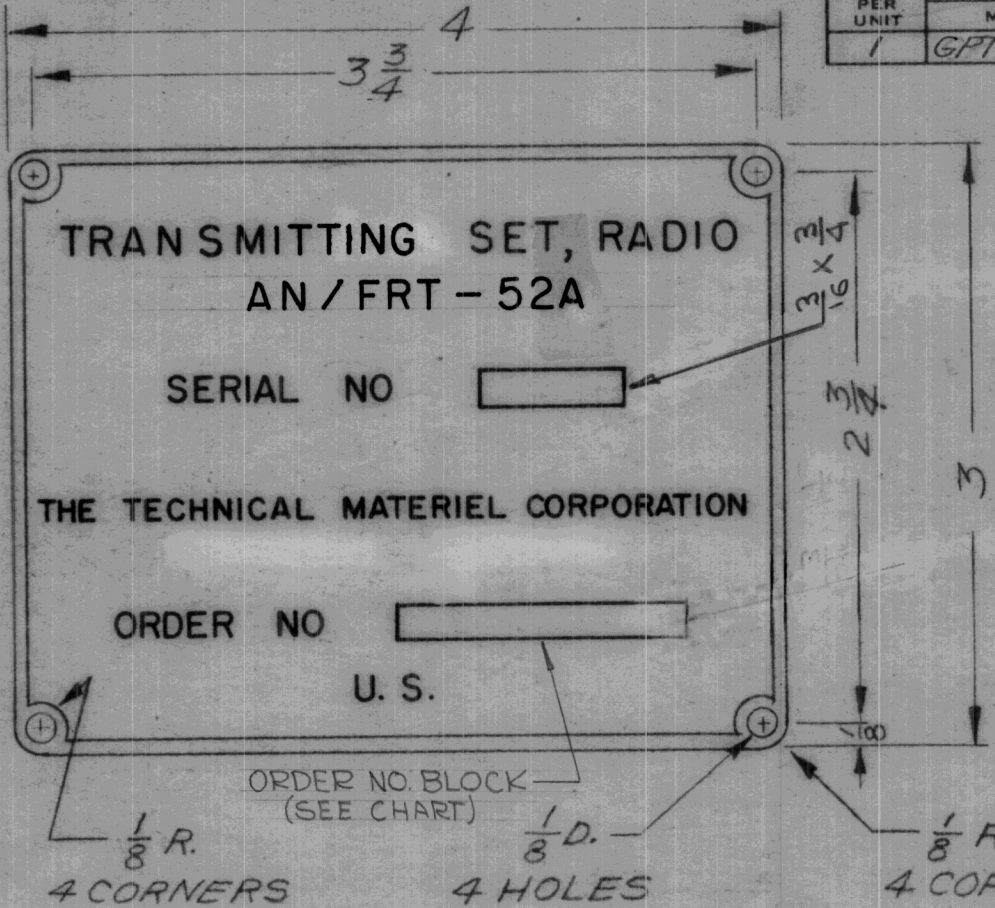


SYMBOL INSERT
(AS PER CHART)
TO BE ETCHED IN
BY MFG'R.

NOTE: ALL LETTERING, BLACK GOTHIC
BACK GROUND TO BE ALUMINUM
COLORED AND SUPPLIED WITH
#583 ADHESIVE BACKING
THIS NAME PLATE WILL BE
MOUNTED ON ALUMINUM W/AN
IRIDITE FINISH.

| | | | | | | | REQ. | ITEM | PART NO. | DESCRIPTION | SYMBOL | |
|--|------|--------------------------|---------|---------|--------|------------|---|------|--------------------|--|--------|--|
| | | | | | | | | | .003 TO .005 | THE TECHNICAL MATERIEL CORP. | | |
| | | | | | | | | | STOCK SIZE | MAMARONECK, NEW YORK | | |
| | | | | | | | | | ALUMINUM FOIL | NAME PLATE, INSTRUCTION | | |
| | | | | | | | | | MATERIAL | | | |
| | | | | | | | | | ANODIZED | <i>De Luis</i> <i>HDe</i> <i>CP</i> DRAWN CHECKED FINAL APPROVAL | | |
| | | | | | | | | | TYPE & TEMPER | HEATTREAT. SPEC. <i>S.D.</i> SEE NOTE ELEC. DES. APP MECH. DES. APP | | |
| | | | | | | | | | FINISH & SPEC. NO. | NP-380 A | | |
| TOLERANCES DEC. DIM. ± FRAC. DIM. ± 1/64 ANGULAR DIM. ± | | | | | | | SCALE: MAXIMUM ALLOWABLE TOLERANCES HAVE BEEN DETERMINED AND ANY DEVIATIONS WILL BE CAUSE FOR REJECTION. REMOVE ALL BURRS AND SHARP EDGES | | | | | |
| A | 2 | CHART ADDED | 7-18-61 | 5287 | WAF | <i>WAF</i> | | | | | | |
| | 1 | SYMBOL INSERT NOTE ADDED | | | | | | | | | | |
| ISSUE | ITEM | CHANGED FROM | DATE | CH. NO. | DRAFTS | CHECKER | ENG. APP. | | | | | |

| | | | | | |
|---------------|-----------|------------|---------|--------|---|
| REQ. PER UNIT | USED ON | | | NP-386 | C |
| | MODEL | ASS'Y. NO. | DATE | | |
| 1 | GPT-10K-T | | 8/16/61 | | |



FINISH:
 REVERSE ETCH, ANODIZE ON LUSTERLESS BLACK BACKGROUND (TYPE 37038) PER FED. STD. NO. 595
 COLORLESS VARNISH PER MIL-V-6894

MINIMUM LETTER SIZE - 3/64 HIGH

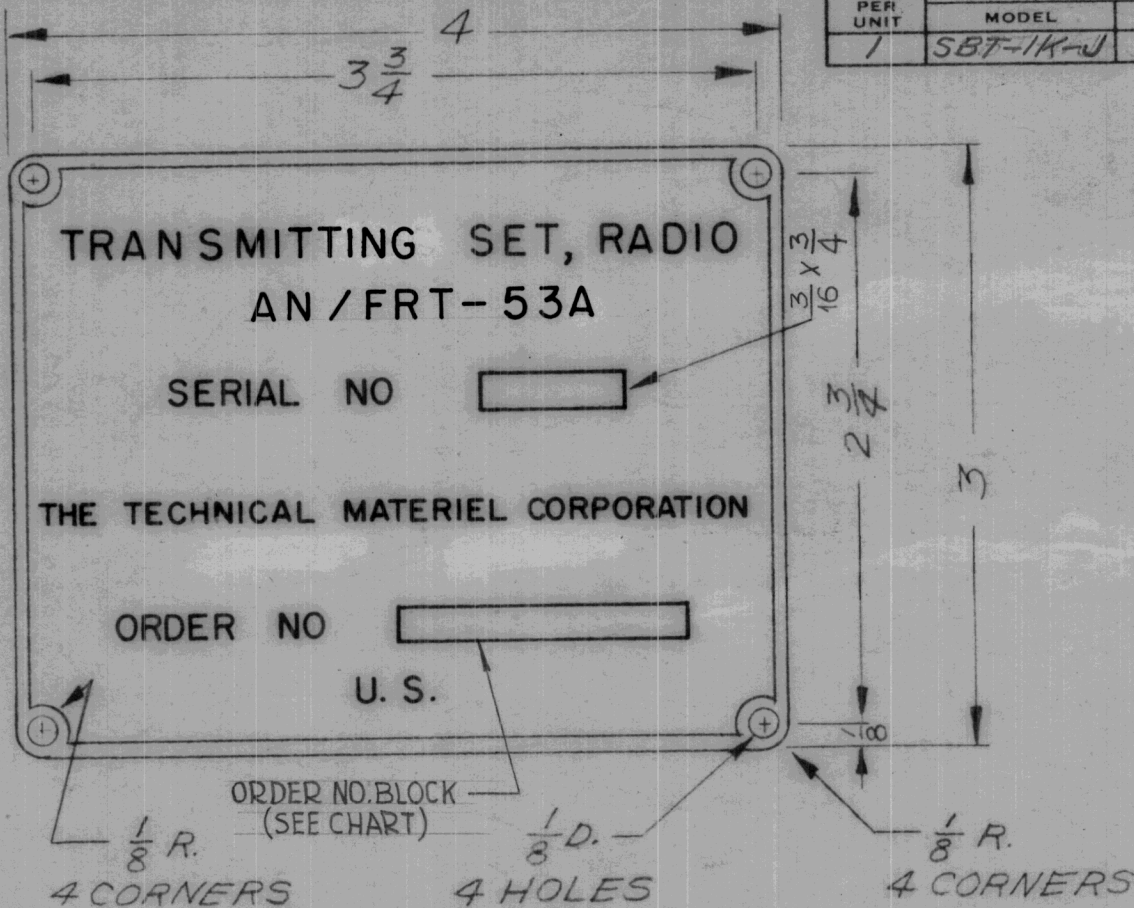
APPLICABLE ORDER AND SERIAL NUMBER WILL BE STEEL STAMPED BY T M C OR

WHERE PURCHASING REQUIREMENT IS SUFFICIENTLY LARGE, ORDER NUMBER SHALL BE ETCHED BY VENDOR IN LIEU OF ORDER NUMBER BLOCK (SEE CHART FOR PROPER NUMBER).

| TIME PART NO | ORDER NO. BLOCK | ORDER NO. (ETCHED BY VENDOR) |
|--------------|-----------------|------------------------------|
| NP-386-1 | 3/16 x 1-1/2 | NO ORDER NUMBER |
| NP-386-2 | NO BLOCK | 18002-PP-62 |

NAMEPLATE TO BE IN ACCORDANCE WITH MIL-STD-130 AND MIL-M-13231A (REF: SIGNAL CORPS)

| C | 1 | MAM'K, N.Y. DELETED ON PICTORIAL | 728-6A | 11955 | Sum | @ | COO | REQ. | ITEM | PART NO. | DESCRIPTION | SYMBOL | |
|----------------|-----|---|---|---------|--------|---------|-----------|------|------|--------------------|------------------------------|----------------|----------|
| B | | REVISED MATERIAL & FINISH NOTE ADD THICKNESS & MATERIAL | 5-14-62 | E6682 | SRG | file | BP | | | .032 THICK | THE TECHNICAL MATERIEL CORP. | | |
| A | 1 | CHART ADDED | 9/18/61 | 5609 | A-B | E | file | | | ALUMINUM | MAMARONECK, NEW YORK | | |
| | | | | | | | | | | MATERIAL | NAMEPLATE | | |
| | | | | | | | | | | 250 | MODEL GPT-10K-T | | |
| ISSUE | TEM | CHANGED FROM | DATE | CH. NO. | DRAFTS | CHECKER | ENG. APP. | | | | wh | | |
| TOLERANCES | | | SCALE: | | | | | | | | | | |
| DEC. DIM. ± | | | MAXIMUM ALLOWABLE TOLERANCES HAVE BEEN DETERMINED AND ANY DEVIATIONS WILL BE CAUSE FOR REJECTION. | | | | | | | | | | |
| FRAC. DIM. ± | | | REMOVE ALL BURRS AND SHARP EDGES | | | | | | | | | | |
| ANGULAR DIM. ± | | | | | | | | | | | | | |
| | | | | | | | | | | SEE NOTE | | | |
| | | | | | | | | | | FINISH & SPEC. NO. | ELEC. DES. APP | MECH. DES. APP | |
| | | | | | | | | | | | | | NP-386 C |



| | | | | |
|--------------------|-------------------|------------|-----------------|----------|
| REQ. PER UNIT 1 | MODEL SBT-1K-J | USED ON | | NP-387 B |
| | | ASS'Y. NO. | DATE 8/16/61 | |

FINISH:
 REVERSE ETCH, ANODIZE ON LUSTERLESS
 BLACK BACKGROUND (TYPE 37038) PER
 FED. STD. NO. 595
 COLORLESS VARNISH PER MIL-V-6894

MINIMUM LETTER SIZE - 3/64 HIGH

APPLICABLE ORDER AND SERIAL NUMBER
 WILL BE STEEL STAMPED BY T M C
 OR
 WHERE PURCHASING REQUIREMENT IS
 SUFFICIENTLY LARGE, ORDER NUMBER
 SHALL BE ETCHED BY VENDOR IN LIEU
 OF ORDER NUMBER BLOCK (SEE CHART
 FOR PROPER NUMBER).

| TMC PART NO. | ORDER NO. BLOCK | ORDER NO. (ETCHED BY VENDOR) |
|--------------|--------------------|------------------------------|
| NP-387-1 | 3/16 x 1-1/2 BLOCK | NO ORDER NUMBER |
| NP-387-2 | NO BLOCK | 18002-PP-62 |

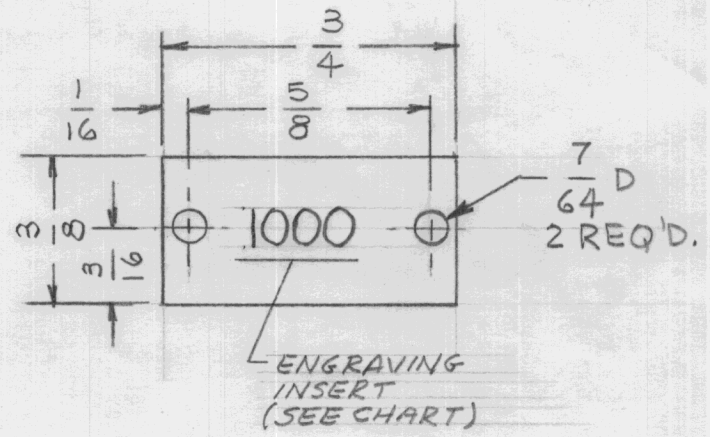
NAMEPLATE TO BE IN ACCORDANCE WITH
 MIL-STD-130 AND MIL-M-13231A
 (REF: SIGNAL CORPS)

| ISSUE | ITEM | CHANGED FROM | DATE | CH. NO. | DRAFTS | CHECKER | ENG. APP. | REQ. | ITEM | PART NO. | DESCRIPTION | SYMBOL |
|-------|------|---|---------|---------|--------|---------|-----------|------|------|--------------------|--|----------------|
| B | 1 | MAM'K, N.Y. DELETED ON PICTORIAL | 7-28-64 | 11955 | Chw | @ | CSW | | | .032 THICK | THE TECHNICAL MATERIEL CORP. MAMARONECK, NEW YORK | |
| A | | ADDED NOTE TO ORDER NO. BLOCK REVISE FINISH & MATERIALS (CHART ADDED) AN/FRT-53A WAS AN/FRT 53 DELETED BLOCK DIMENSION | 5-14-62 | EG6821 | SRG | file | BL | | | ALUMINUM | NAMEPLATE | |
| | | | | | | | | | | MATERIAL | MODEL SBT-1K-J | |
| | | TOLERANCES | | | | | | | | 250 | | wh file |
| | | DEC. DIM. ± | | | | | | | | TYPE & TEMPER | DRAWN | CHECKED |
| | | FRAC. DIM. ± | | | | | | | | HEAT TREAT. SPEC. | | FINAL APPROVAL |
| | | ANGULAR DIM. ± | | | | | | | | SEE NOTE | | |
| | | | | | | | | | | FINISH & SPEC. NO. | | |
| | | | | | | | | | | | ELEC. DES. APP | MECH. DES. APP |
| | | | | | | | | | | | | NP-387 B |

| | | | |
|---------------|---------|------------|---------|
| REQ. PER UNIT | USED ON | | |
| | MODEL | ASS'Y. NO. | DATE |
| | TIS-3 | | 9-18-61 |

NP-389

| TMC PART NO. | ENGRAVING INSERT | HEIGHT OF LETTER | DEPTH OF STROKE | WIDTH OF STROKE |
|--------------|------------------|------------------|-----------------|-----------------|
| NP-389-1 | 1000 | 3/32 | .010 | .020 |
| NP-389-2 | 1500 | 3/32 | .010 | .020 |



FINISH: -
 S-404 - YELLOW IRIDITE
 S-114 - ZINC CHROMATE PRIMER } FRONT & EDGES ONLY
 S-115 - TMC SMOOTH GREY ENAMEL }

| ISSUE | ITEM | CHANGED FROM | DATE | CH. NO. | DRAFTS | CHECKER | ENG. APP. | REQ. ITEM | PART NO. | DESCRIPTION | SYMBOL |
|-------|------|--------------|------|---------|--------|---------|-----------|--------------------|------------------|--|----------------|
| | | | | | | | | .032 | | THE TECHNICAL MATERIEL CORP. MAMARONECK, NEW YORK | |
| | | | | | | | | STOCK SIZE | | NAMEPLATE, IDENTIFICATION, SWITCH, POSITION | |
| | | | | | | | | ALUMINUM | | | |
| | | | | | | | | MATERIAL | | | |
| | | | | | | | | 5052-H32 | | AB | JW |
| | | | | | | | | TYPE & TEMPER | HEATTREAT. SPEC. | DRAWN | CHECKED |
| | | | | | | | | SEE NOTE | | | DB |
| | | | | | | | | FINISH & SPEC. NO. | | | NP-389 |
| | | | | | | | | | | ELEC. DES. APP | MECH. DES. APP |

THE CONTENTS OF THIS DRAWING ARE THE EXCLUSIVE PROPERTY OF THE TECHNICAL MATERIEL CORP. ITS UNAUTHORIZED USE OR REPRODUCTION IN WHOLE OR IN PART IS STRICTLY FORBIDDEN.

REQ. PER UNIT

MODEL

USED ON

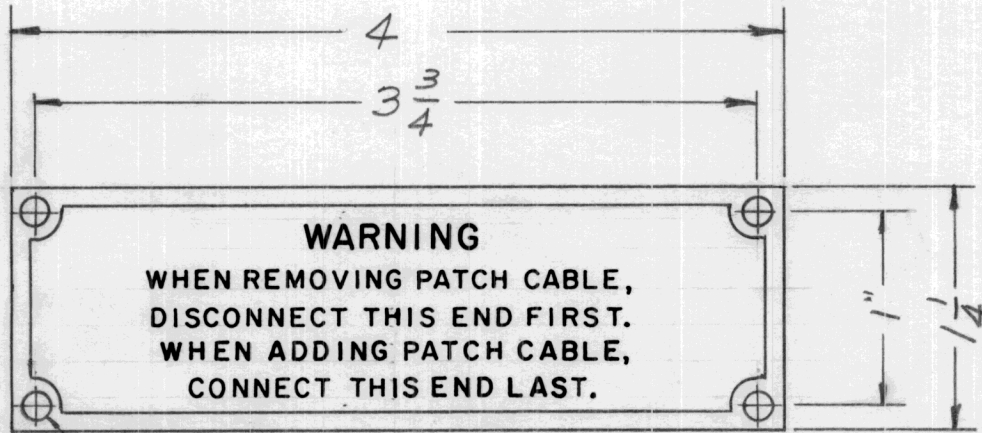
ASS'Y. NO.

DATE

1

10-3-61

NP-394



NAMEPLATE TO BE MANUFACTURED IN ACCORDANCE WITH MIL-P-15024B, TYPE A 17 JAN. 1957.

$\frac{1}{8}$ DIA. 4 REQ'D.

NOTE: FINISH, LUSTERLESS RED MATTE BACKGROUND.

| REQ. | ITEM | PART NO. | DESCRIPTION | | | SYMBOL |
|---|--------------------|---|------------------------------|---------|----------------|-----------|
| | | .032 THICK | THE TECHNICAL MATERIEL CORP. | | | |
| | | STOCK SIZE | MAMARONECK, NEW YORK | | | |
| | | ALUMINUM | NAMEPLATE, WARNING | | | |
| | | MATERIAL | | | | |
| SYM | DESCRIPTION | DATE | CH. NO. | DRAFTS | CHECKER | ENG. APP. |
| UNLESS OTHERWISE SPECIFIED: | | SCALE: | | | | |
| DIMENSIONS ARE IN INCHES | | MAXIMUM ALLOWABLE TOLERANCES HAVE BEEN DETERMINED AND ANY DEVIATIONS WILL BE CAUSE FOR REJECTION. | | | | |
| TOLERANCES ON | | REMOVE ALL BURRS AND SHARP EDGES | | | | |
| FRAC. $\pm 1/64$ DEC. $\pm .005$ ANGLES $\pm 1/2^\circ$ | | | | | | |
| | 250 | | ab | JCB | [Signature] | |
| | TYPE & TEMPER | HEATTREAT. SPEC. | DRAWN | CHECKED | FINAL APPROVAL | |
| | SEE NOTE | | | | NP-394 | |
| | FINISH & SPEC. NO. | ELEC. DES. APP. | MECH. DES. APP. | | | |