

IF IT IS FOUND DESIRABLE TO CHANGE ANY TOLERANCE OR OTHER DETAIL SPECIFIED ON THIS DRAWING NOTIFY THE PURCHASER PROMPTLY.

# STANDARD DRAWING

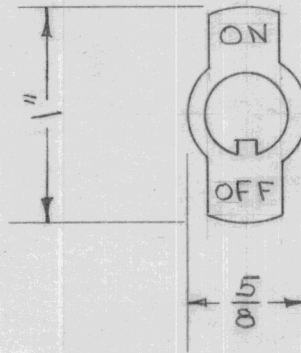
NP-100

MAXIMUM ALLOWABLE TOLERANCES HAVE BEEN DETERMINED AND DEVIATIONS WILL BE CAUSE FOR REJECTION. REMOVE ALL BURRS AND SHARP EDGES

### USED ON

MODEL	PROJECT NO.	ASS'Y. NO.	DATE
VTG	103	A-124	8-20-53

TMC NO.	CAT. NO.
NP-100-1	1300



DIMENSIONS FOR REF. ONLY

REF.: INSULINE CORP. OF AMERICA

REQ.	ITEM	PART NO.	DESCRIPTION	SYMBOL
		.031	THE TECHNICAL MATERIEL CORP. MAMARONECK, NEW YORK	
		STOCK SIZE		
		BRASS	ON-OFF TOGGLE SWITCH	
		MATERIAL	PLATE	
		WEIGHT PER PC.		
			C.D.D. 3/24/53	
		TYPE & TEMPER	DRAWN	ELEC. DES. APP. MECH. DES. APP.
			JAD 3/25/53	
		HEAT TREAT. SPEC.	CHECKED	FINAL APPROVAL
		S-135 NICKEL PLATE		NP-100
		FINISH & SPEC. NO.		

ISSUE	ITEM	CHANGED FROM	DATE	CN. NO.	DRAFTS	CHECKER	ENG. APP.
		REDRAWN - NO REVISION	3/26/53		CDD	JAD	

TOLERANCES		SCALE
ALL OTHERS	DEC. DIM. ± FRAC. DIM. ± ANGULAR DIM. ±	DRILL, PUNCH, COMMERCIAL STOCK SIZES AND MANUFACTURERS TOLERANCES ARE NOT INCLUDED.





IF IT IS FOUND DESIRABLE TO CHANGE ANY TOLERANCE OR OTHER DETAIL SPECIFIED ON THIS DRAWING NOTIFY THE PURCHASER PROMPTLY.

# STANDARD DRAWING

NP-105

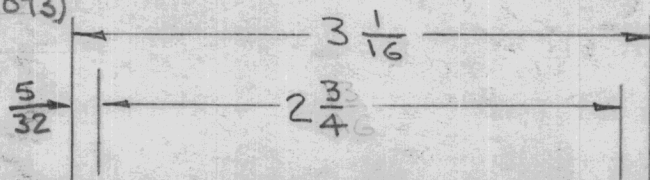
MAXIMUM ALLOWABLE TOLERANCES HAVE BEEN DETERMINED AND DEVIATIONS WILL BE CAUSE FOR REJECTION.  
REMOVE ALL BURRS AND SHARP EDGES

USED ON

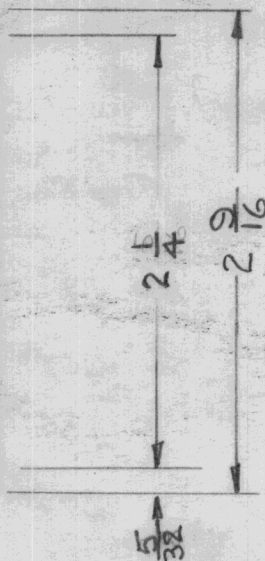
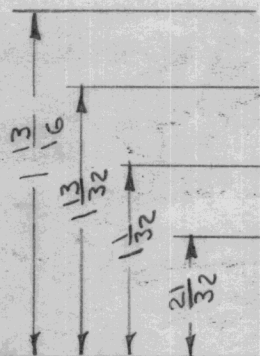
MODEL	PROJECT NO.	ASS'Y. NO.	DATE
XFK			8-25-52
LFA	143		9-13-52

Note:

Holes Are  $\frac{3}{32}D$  (.093)  
4 Req.

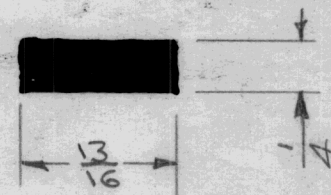


XTAL	XTAL FREQ.	OUTPUT FREQ.
1	████████	████████
2	████████	████████
3	████████	████████
EXT.	████████	████████

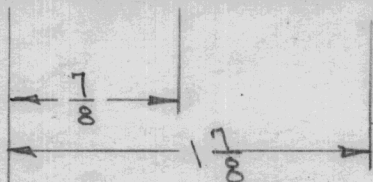


Note

Final Product To Be White On Black Background



Approx. Size of Blocks



REQ.	ITEM	PART NO.	DESCRIPTION	SYMBOL
		.060	THE TECHNICAL MATERIEL CORP.	
		STOCK SIZE	MAMARONECK, NEW YORK	
	VINY LITE	←	FREQ. NAME PLATE	
	MATERIAL	WEIGHT PER PC.		
	LAMINATION			
	TYPE & TEMPER			
	HEAT TREAT. SPEC.			
	FINISH & SPEC. NO.			

ISSUE	ITEM	CHANGED FROM	DATE	CN. NO.	DRAFTS	CHECKER	ENG. APP.

TOLERANCES	SCALE
ALL OTHERS DEC. DIM. ± FRAC. DIM. ± ANGULAR DIM. ±	FULL SIZE

DRILL, PUNCH, COMMERCIAL STOCK SIZES AND MANUFACTURERS TOLERANCES ARE NOT INCLUDED.	DRAWN	ELEC. DES. APP.	MECH. DES. APP.
	JAD 8-25-52	G.T.O	9/18/52
	JAD 8-25-52		
	CHECKED	FINAL APPROVAL	
	SUPERSEDES	NP-105	
	AMS 168		





IF IT IS FOUND DESIRABLE TO CHANGE ANY TOLERANCE OR OTHER DETAIL SPECIFIED ON THIS DRAWING NOTIFY THE PURCHASER PROMPTLY.

RELEASED

NP-108 E

MAXIMUM ALLOWABLE TOLERANCES HAVE BEEN DETERMINED AND DEVIATIONS WILL BE CAUSE FOR REJECTION. REMOVE ALL BURRS AND SHARP EDGES

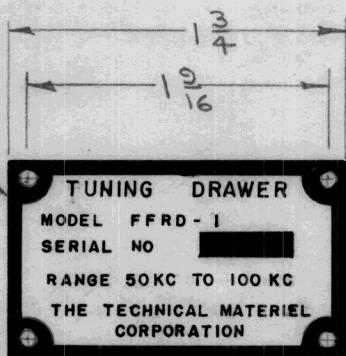
USED ON

MODEL	PROJECT NO.	ASS'Y. NO.	DATE
FFRD-5	104	A-228	10-17-52
FFRD-6	104	A-228	10-17-52
FFRD-7	104	A-228	10-17-52
FFRD-8	104	A-228	10-17-52
FFRD-3M			5-6-55

Note

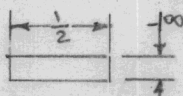
ALL Lettering  
Approx. To Scale.

EXAMPLE  
NP-108-5



$\frac{3}{32} D(.093)$

4 Holes Req.



Approx Size  
of Block

NOTE:

OBS. USE NP-108-10	NP-108-7	FFRD-7	8 TO 16 MCS.
OBS. USE NP-108-11	NP-108-8	FFRD-8	16 TO 32 MCS.
	NP-108-9	FFRD-3M	450KC TO 510 KC
	NP-108-10	FFRD-7B	8 to 16 MCS
	NP-108-11	FFRD-8B	16 to 32 MCS

TMC NO	MODEL INSERT	RANGE INSERT
NP-108-1	FFRD-1	50KC TO 100KC
NP-108-2	FFRD-2	100KC TO 200KC
NP-108-3	FFRD-3	200KC TO 400KC
NP-108-4	FFRD-4	540KC TO 1350KC
NP-108-5	FFRD-5A	2 TO 4 MCS.
NP-108-6	FFRD-6A	4 TO 8 MCS.
NP-108-7	FFRD-7	8 TO 16 MCS.
NP-108-8	FFRD-8	16 TO 32 MCS.
NP-108-9	FFRD-3M	450KC TO 510 KC
NP-108-10	FFRD-7B	8 to 16 MCS
NP-108-11	FFRD-8B	16 to 32 MCS

REF: S-278

REQ.	ITEM	PART NO.	DESCRIPTION	SYMBOL
		.032	THE TECHNICAL MATERIEL CORP. MAMARONECK, NEW YORK	
		STOCK SIZE		
		ALUMINUM	NAME PLATE	
		MATERIAL	WEIGHT PER PC.	
		250		
		TYPE & TEMPER		
			JAD- 10/17/52	G.T.O
			DRAWN	ELEC. DES. APP.
			G.T.O	MECH. DES. APP.
			CHECKED	FINAL APPROVAL
			BLACK MATTE BACKGROUND & CLEAR LACQUER	
			FINISH & SPEC. NO.	
				NP-108 E





IF IT IS FOUND DESIRABLE TO CHANGE ANY TOLERANCE OR OTHER DETAIL SPECIFIED ON THIS DRAWING NOTIFY THE PURCHASER PROMPTLY.

RELEASED

NP-110 D

MAXIMUM ALLOWABLE TOLERANCES HAVE BEEN DETERMINED AND DEVIATIONS WILL BE CAUSE FOR REJECTION. REMOVE ALL BURRS AND SHARP EDGES

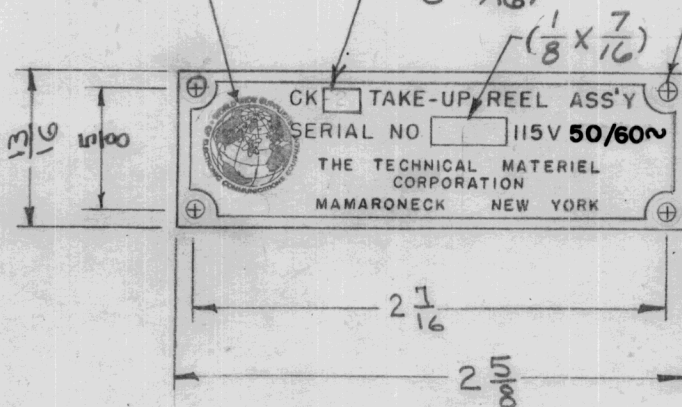
USED ON

MODEL	PROJECT NO.	ASS'Y. NO.	DATE
CK-2	168	A-291	12-11-52
CK-2A			4-22-66

TMC INSIGNIA  
(REF. NP493)

MODEL INSERT  
( $\frac{1}{8} \times \frac{3}{16}$ )

$\frac{3}{32} D (.093)$   
4 HOLES REQ.



NOTE:

ALL LETTERING APPROX.  
TO SCALE.

REQ.	ITEM	PART NO.			DESCRIPTION			SYMBOL
		.032			THE TECHNICAL MATERIEL CORP.			
		STOCK SIZE			MAMARONECK, NEW YORK			
D	ADDED DIM. TO SERIAL & MODEL BLOCKS & CK-2A WAS CK-3	6-23-66	16447		ALUMINUM		NAME PLATE	
C	50/60~W/60~ MODEL CK-3 ADDED	4-22-66	16118		MATERIAL	WEIGHT PER PC.		
B	NEW TMC INSIGNIA ADDED	8/7/62	7046	MJT	250			
A	MATTE WAS ETCHED	11/5/54	1	JAN	TYPE & TEMPER			
ISSUE	ITEM	CHANGED FROM	DATE	CN. NO.	DRAFTS	CHECKER	ENG. APP.	
TOLERANCES			SCALE FULL SIZE					
ALL OTHERS	DEC. DIM. $\pm$ FRAC. DIM. $\pm \frac{1}{64}$ ANGULAR DIM. $\pm$		DRILL, PUNCH, COMMERCIAL STOCK SIZES AND MANUFACTURERS TOLERANCES ARE NOT INCLUDED.					
HEAT TREAT. SPEC.					BLACK MATTE BACKGROUND & CLEAR LACQUER			
FINISH & SPEC. NO.					DRAWN			
					CHECKED		FINAL APPROVAL	
					NP110 D			

IF IT IS FOUND DESIRABLE TO CHANGE ANY TOLERANCE OR OTHER DETAIL SPECIFIED ON THIS DRAWING NOTIFY THE PURCHASER PROMPTLY.

OBSOLETE

NP-III

A

MAXIMUM ALLOWABLE TOLERANCES HAVE BEEN DETERMINED AND DEVIATIONS WILL BE CAUSE FOR REJECTION. REMOVE ALL BURRS AND SHARP EDGES

USED ON

MODEL	PROJECT NO.	ASS'Y. NO.	DATE
AC-1			5-15-53

COUPLING

CAPACITANCE

OUTPUT 1

3-18Mc 2-3Mc

BAL UNBAL

OUTPUT 2

ANTENNA TUNING

BAND SW

REQ.	ITEM	PART NO.	DESCRIPTION	SYMBOL
			THE TECHNICAL MATERIEL CORP. MAMARONECK, NEW YORK	
STOCK SIZE			NAME PLATE	
MATERIAL		WEIGHT PER PC.		
TYPE & TEMPER			DRAWN	ELEC. DES. APP. MECH. DES. APP.
HEAT TREAT. SPEC.			CHECKED	FINAL APPROVAL
FINISH & SPEC. NO.			NP-III A	

A	1	REDRAWN W/CHANGES	5/15	1						
ISSUE	ITEM	CHANGED FROM	DATE	CN. NO.	DRAFTS	CHECKER	ENG. APP.			

TOLERANCES			SCALE			
ALL OTHERS	DEC. DIM. $\pm$	FRAC. DIM. $\pm$	ANGULAR DIM. $\pm$	DRILL, PUNCH, COMMERCIAL STOCK SIZES AND MANUFACTURERS TOLERANCES ARE NOT INCLUDED.		



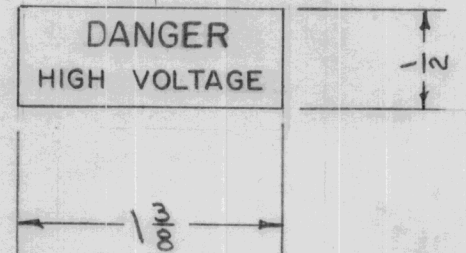
IF IT IS FOUND DESIRABLE TO CHANGE ANY TOLERANCE OR OTHER DETAIL SPECIFIED ON THIS DRAWING NOTIFY THE PURCHASER PROMPTLY.

NP-116

MAXIMUM ALLOWABLE TOLERANCES HAVE BEEN DETERMINED AND DEVIATIONS WILL BE CAUSE FOR REJECTION. REMOVE ALL BURRS AND SHARP EDGES

USED ON

MODEL	PROJECT NO.	ASS'Y. NO.	DATE
FFR	104		2-6-53
AMD-1	104		2-6-53



NOTE:  
RED LETTERS ON  
WHITE BACKGROUND

REQ.	ITEM	PART NO.	DESCRIPTION	SYMBOL
			<b>THE TECHNICAL MATERIEL CORP.</b> MAMARONECK, NEW YORK	
		STOCK SIZE	HIGH VOLTAGE	
		MATERIAL	DECAL	
		WEIGHT PER PC.		
		TYPE & TEMPER	JAD 2-6-53	
			DRAWN	ELEC. DES. APP. MECH. DES. APP.
		HEAT TREAT. SPEC.	CHECKED	FINAL APPROVAL
		FINISH & SPEC. NO.		NP-116

ISSUE	ITEM	CHANGED FROM	DATE	CN. NO.	DRAFTS	CHECKER	ENG. APP.
TOLERANCES			SCALE				
ALL OTHERS	DEC. DIM. ± FRAC. DIM. ± ANGULAR DIM. ±		DRILL, PUNCH, COMMERCIAL STOCK SIZES AND MANUFACTURERS TOLERANCES ARE NOT INCLUDED.				

IF IT IS FOUND DESIRABLE TO CHANGE ANY TOLERANCE OR OTHER DETAIL SPECIFIED ON THIS DRAWING NOTIFY THE PURCHASER PROMPTLY.

MAXIMUM ALLOWABLE TOLERANCES HAVE BEEN DETERMINED AND DEVIATIONS WILL BE CAUSE FOR REJECTION. REMOVE ALL BURRS AND SHARP EDGES

NP-118

A

USED ON

MODEL	PROJECT NO.	ASS'Y. NO.	DATE
	189		3-25-53

TMC INSIGNIA  
(REF. NP-493)

SIZE INSERT



TMC PART NO.	SIZE INSERT
NP-118-1	SMALL
NP-118-2	INTERMEDIATE
NP-118-3	MEDIUM
NP-118-4	LARGE
NP-118-5	EXTRA LARGE

REQ.	ITEM	PART NO.	DESCRIPTION	SYMBOL
			THE TECHNICAL MATERIEL CORP. MAMARONECK, NEW YORK	
		STOCK SIZE	NAME TAG, CLOTH	
		MATERIAL	FOR HELMETS, SUMMER FLYING	
		WEIGHT PER PC.		
		TYPE & TEMPER		
		HEAT TREAT. SPEC.		
		FINISH & SPEC. NO.		
			DRAWN <i>JAD</i> 3/25/53	
			ELEC. DES. APP.	MECH. DES. APP.
			CHECKED	FINAL APPROVAL
				NP-118
				A

A	1	NEW TMC INSIGNIA ADDED	8/7/62	7046	MJT	<i>JAD</i>	<i>JSB</i>
ISSUE	ITEM	CHANGED FROM	DATE	CN. NO.	DRAFTS	CHECKER	ENG. APP.

TOLERANCES		SCALE	DRILL, PUNCH, COMMERCIAL STOCK SIZES AND MANUFACTURERS TOLERANCES ARE NOT INCLUDED.
ALL OTHERS:	DEC. DIM. ± FRAC. DIM. ± ANGULAR DIM. ±	#	



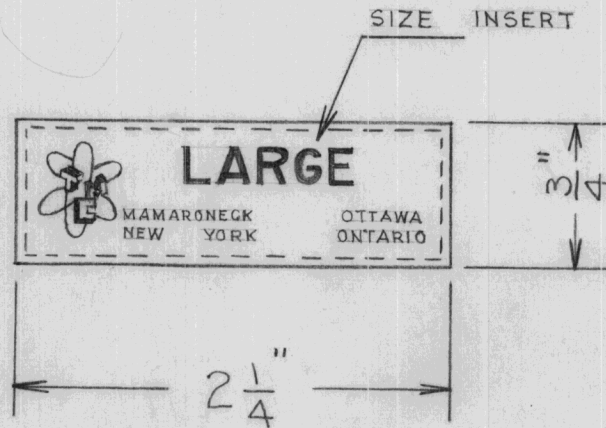
IF IT IS FOUND DESIRABLE TO CHANGE ANY TOLERANCE OR OTHER DETAIL SPECIFIED ON THIS DRAWING NOTIFY THE PURCHASER PROMPTLY.

NP-118

MAXIMUM ALLOWABLE TOLERANCES HAVE BEEN DETERMINED AND DEVIATIONS WILL BE CAUSE FOR REJECTION. REMOVE ALL BURRS AND SHARP EDGES

USED ON

MODEL	PROJECT NO.	ASS'Y. NO.	DATE
	189		3-25-53



TMC PART NO.	SIZE INSERT
NP-118-1	SMALL
NP-118-2	INTERMEDIATE
NP-118-3	MEDIUM
NP-118-4	LARGE
NP-118-5	EXTRA LARGE

**NOTICE TO PERSONS RECEIVING THIS DRAWING**

THE TECHNICAL MATERIEL CORPORATION claims proprietary right in the material disclosed hereon. This drawing is issued in confidence for engineering information only and may not be reproduced or used to manufacture anything shown hereon without permission from THE TECHNICAL MATERIEL CORPORATION to the user. This drawing is loaned for mutual assistance and is subject to recall at any time.

Property of:

THE TECHNICAL MATERIEL CORPORATION  
MAMARONECK, NEW YORK

REQ.	ITEM	PART NO.	DESCRIPTION	SYMBOL
			<b>TMC (Canada) LIMITED</b> OTTAWA ONTARIO	
		STOCK SIZE	NAME TAG, CLOTH	
		MATERIAL	WEIGHT PER PC.	
			FOR HELMETS, SUMMER FLYING	
		TYPE & TEMPER	JADe 3/25/53	
			DRAWN	ELEC. DES. APP. MECH. DES. APP.
		HEAT TREAT. SPEC.	<i>Edell</i>	
			CHECKED	FINAL APPROVAL
		FINISH & SPEC. NO.	NP-118	

ISSUE	ITEM	CHANGED FROM	DATE	CN. NO.	DRAFTS	CHECKER	ENG. APP.

TOLERANCES

SCALE

ALL  
OTHERS  
DEC. DIM.  $\pm$   
FRAC. DIM.  $\pm$   
ANGULAR DIM.  $\pm$

DRILL, PUNCH, COMMERCIAL STOCK  
SIZES AND MANUFACTURERS  
TOLERANCES ARE NOT INCLUDED.

IF IT IS FOUND DESIRABLE TO CHANGE ANY TOLERANCE OR OTHER DETAIL SPECIFIED ON THIS DRAWING NOTIFY THE PURCHASER PROMPTLY.

NP-121 B

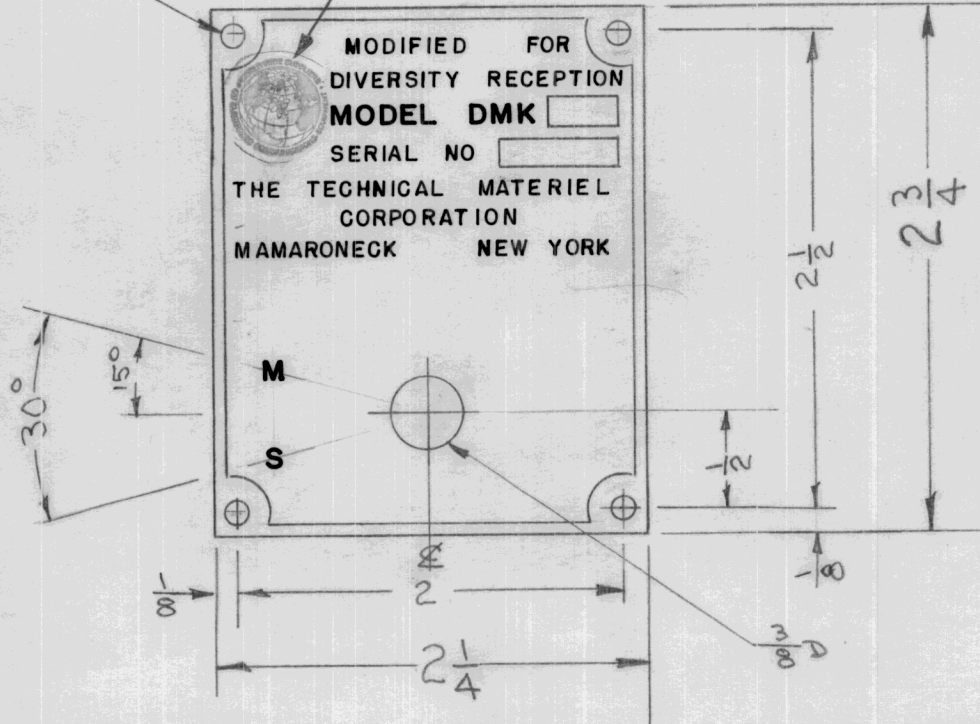
MAXIMUM ALLOWABLE TOLERANCES HAVE BEEN DETERMINED AND DEVIATIONS WILL BE CAUSE FOR REJECTION. REMOVE ALL BURRS AND SHARP EDGES

USED ON

MODEL	PROJECT NO.	ASS'Y. NO.	DATE
DMK			6-9-53

Y8D (.125)  
4 Holes Req.

TMC INSIGNIA  
(REF. NP-493)



Note:  
All Lettering Approx  
To Scale.

REQ.	ITEM	PART NO.	DESCRIPTION	SYMBOL
		.032	THE TECHNICAL MATERIEL CORP. MAMARONECK, NEW YORK	
		Stock Size		
		Aluminum	NAME PLATE	
		MATERIAL	WEIGHT PER PC.	
		250		
		TYPE & TEMPER		
			DRAWN	ELEC. DES. APP.
			C.A.S.	MECH. DES. APP.
			CHECKED	FINAL APPROVAL
		HEAT TREAT. SPEC.		
		Black MATTE Background Clear Lacquer		
		FINISH & SPEC. NO.		

ISSUE	ITEM	CHANGED FROM	DATE	CN. NO.	DRAFTS	CHECKER	ENG. APP.
B	1	NEW TMC INSIGNIA ADDED	8/7/62	T046	MJT	JAD	
A	1	MATTE WAS ETCHED	4/19/54		EDD	JAD	

TOLERANCES		SCALE
ALL OTHERS	DEC. DIM. ± FRAC. DIM. ± ANGULAR DIM. ±	FULL
DRILL, PUNCH, COMMERCIAL STOCK SIZES AND MANUFACTURERS TOLERANCES ARE NOT INCLUDED.		

NP-121 B



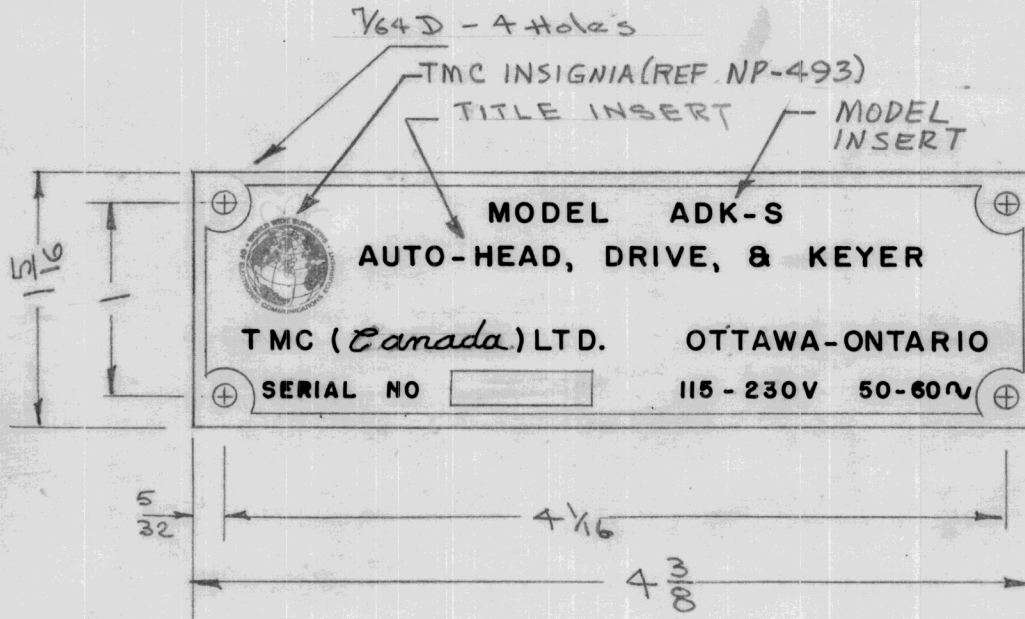
IF IT IS FOUND DESIRABLE TO CHANGE ANY TOLERANCE OR OTHER DETAIL SPECIFIED ON THIS DRAWING NOTIFY THE PURCHASER PROMPTLY.

MAXIMUM ALLOWABLE TOLERANCES HAVE BEEN DETERMINED AND DEVIATIONS WILL BE CAUSE FOR REJECTION. REMOVE ALL BURRS AND SHARP EDGES

NP-122 D

USED ON

TMC PART NO	MODEL INSERT	TITLE INSERT
NP-122-1	ADK-S	AUTO-HEAD, DRIVE, & KEYS
NP-122-2	RAPC	RECORDER, AMPLIFIER & PULLER
NP-122-3	AMD	AUTO-HEAD & DRIVE
NP-122-4	CTP	TAPE PULLER
NP-122-5	RPC	RECORDER & PULLER



REQ.	ITEM	PART NO.	DESCRIPTION	SYMBOL
		.032	THE TECHNICAL MATERIEL CORP.	
		STOCK SIZE	MAMARONECK, NEW YORK	
		ALUMINUM	NAME PLATE	
		MATERIAL	WEIGHT PER PC.	
		250		
		TYPE & TEMPER		
			DRAWN	ELEC. DES. APP. MECH. DES. APP.
			CHECKED	FINAL APPROVAL
		HEAT TREAT. SPEC.		
		Black Matte Background & Clear Lacquer		
		FINISH & SPEC. NO.		

ISSUE	ITEM	CHANGED FROM	DATE	CN. NO.	DRAFTS	CHECKER	ENG. APP.
D	1	NEW TMC INSIGNIA ADDED	8/7/62	7046	MJT	J. De	
C	1	MATTE WAS ETCHED	11/15/54	3	CD	J. De	
B	2	UNITS ADDED	6/9/53	2	J. De	CD	
A	1	LETTERING CHANGED.	5/28/53	1	J. De	CD	

TOLERANCES		SCALE
ALL OTHERS	DEC. DIM. ± FRAC. DIM. ± ANGULAR DIM. ±	DRILL, PUNCH, COMMERCIAL STOCK SIZES AND MANUFACTURERS TOLERANCES ARE NOT INCLUDED.

IF IT IS FOUND DESIRABLE TO CHANGE ANY TOLERANCE OR OTHER DETAIL SPECIFIED ON THIS DRAWING NOTIFY THE PURCHASER PROMPTLY.

NP-125

MAXIMUM ALLOWABLE TOLERANCES HAVE BEEN DETERMINED AND DEVIATIONS WILL BE CAUSE FOR REJECTION. REMOVE ALL BURRS AND SHARP EDGES

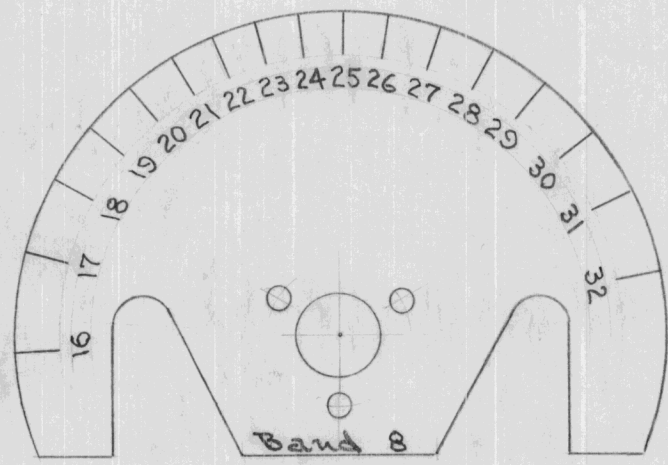
USED ON

MODEL

PROJECT NO.

ASS'Y. NO.

DATE



8

REQ.	ITEM	PART NO.	DESCRIPTION	SYMBOL
			THE TECHNICAL MATERIEL CORP. MAMARONECK, NEW YORK	
		STOCK SIZE	DIAL TEMPLATE	
		MATERIAL	FFRD-8	
		WEIGHT PER PC.		
		TYPE & TEMPER	JAD 7-29-53	G.T.O
			DRAWN	ELEC. DES. APP.
			G.T.O	G.T.O
		HEAT TREAT. SPEC.	CHECKED	FINAL APPROVAL
		FINISH & SPEC. NO.		NP-125

ISSUE ITEM CHANGED FROM DATE CN. NO. DRAFTS CHECKER ENG. APP.

TOLERANCES

SCALE

ALL OTHERS  
DEC. DIM. ±  
FRAC. DIM. ±  
ANGULAR DIM. ±

DRILL, PUNCH, COMMERCIAL STOCK SIZES AND MANUFACTURERS TOLERANCES ARE NOT INCLUDED.





IF IT IS FOUND DESIRABLE TO CHANGE ANY TOLERANCE OR OTHER DETAIL SPECIFIED ON THIS DRAWING NOTIFY THE PURCHASER PROMPTLY.

NP-127

MAXIMUM ALLOWABLE TOLERANCES HAVE BEEN DETERMINED AND DEVIATIONS WILL BE CAUSE FOR REJECTION. REMOVE ALL BURRS AND SHARP EDGES

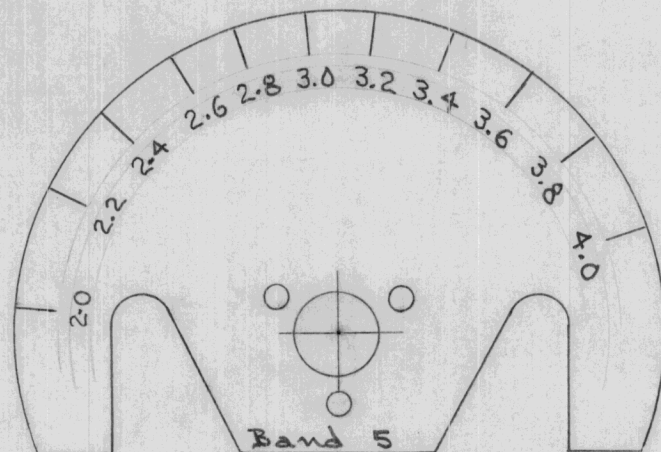
USED ON

MODEL

PROJECT NO.

ASS'Y. NO.

DATE



5

REQ.	ITEM	PART NO.	DESCRIPTION	SYMBOL
			THE TECHNICAL MATERIEL CORP. MAMARONECK. NEW YORK	
		STOCK SIZE	DIAL TEMPLATE	
		MATERIAL	FFRD-5	
		WEIGHT PER PC.	FAID 7-29-53	G.T.O.
		TYPE & TEMPER	DRAWN	ELEC. DES. APP.
			G.T.O.	MECH. DES. APP.
		HEAT TREAT. SPEC.	CHECKED	FINAL APPROVAL
		FINISH & SPEC. NO.		NP-127

ISSUE	ITEM	CHANGED FROM	DATE	CN. NO.	DRAFTS	CHECKER	ENG. APP.
TOLERANCES			SCALE				
ALL OTHERS	DEC. DIM. $\pm$	DRILL, PUNCH, COMMERCIAL STOCK SIZES AND MANUFACTURERS TOLERANCES ARE NOT INCLUDED.					
	FRAC. DIM. $\pm$						
	ANGULAR DIM. $\pm$						



IF IT IS FOUND DESIRABLE TO CHANGE ANY TOLERANCE OR OTHER DETAIL SPECIFIED ON THIS DRAWING NOTIFY THE PURCHASER PROMPTLY.

NP-128

MAXIMUM ALLOWABLE TOLERANCES HAVE BEEN DETERMINED AND DEVIATIONS WILL BE CAUSE FOR REJECTION. REMOVE ALL BURRS AND SHARP EDGES

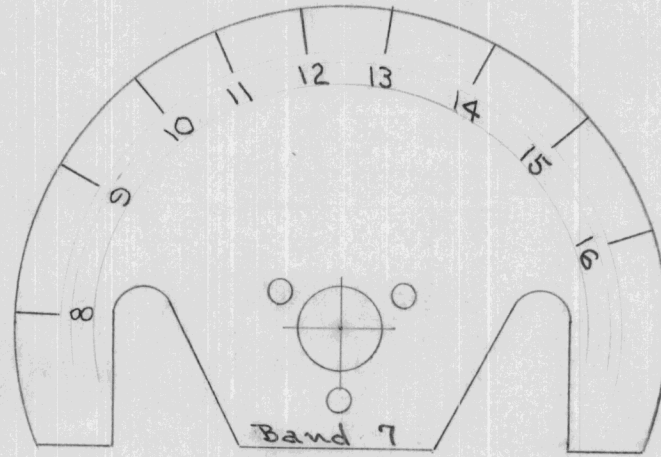
USED ON

MODEL

PROJECT NO.

ASS'Y. NO.

DATE



7

REQ.	ITEM	PART NO.	DESCRIPTION	SYMBOL
			THE TECHNICAL MATERIEL CORP.	
			MAMARONECK. NEW YORK	
STOCK SIZE			DIAL TEMPLATE	
			FFRD-7	
MATERIAL				
WEIGHT PER PC.				
TYPE & TEMPER			JAD 7-29-53	G.T.O
			DRAWN	ELEC. DES. APP.
			G.T.O	G.T.O
HEAT TREAT. SPEC.			CHECKED	FINAL APPROVAL
FINISH & SPEC. NO.				NP-128

ISSUE	ITEM	CHANGED FROM	DATE	CN. NO.	DRAFTS	CHECKER	ENG. APP.

TOLERANCES

SCALE

ALL OTHERS  
 DEC. DIM.  $\pm$   
 FRAC. DIM.  $\pm$   
 ANGULAR DIM.  $\pm$

DRILL, PUNCH, COMMERCIAL STOCK SIZES AND MANUFACTURERS TOLERANCES ARE NOT INCLUDED.

IF IT IS FOUND DESIRABLE TO CHANGE ANY TOLERANCE OR OTHER DETAIL SPECIFIED ON THIS DRAWING NOTIFY THE PURCHASER PROMPTLY.

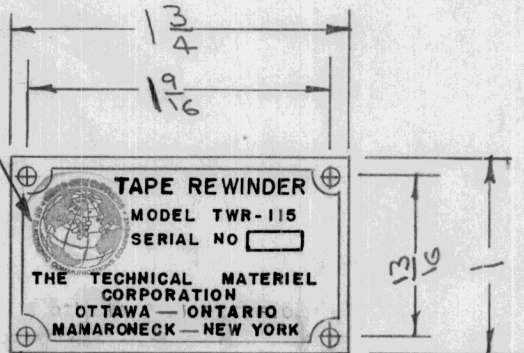
NP-131 | B

MAXIMUM ALLOWABLE TOLERANCES HAVE BEEN DETERMINED AND DEVIATIONS WILL BE CAUSE FOR REJECTION. REMOVE ALL BURRS AND SHARP EDGES

USED ON

MODEL	PROJECT NO.	ASS'Y. NO.	DATE
TWR-115			8-31-53

TMC INSIGNIA  
(REF. NP-493)



$\frac{3}{32} D (.093)$   
4 Holes Req.

Approx. Size  
of Block

NOTE:

ALL LETTERING APPROX TO SCALE

REQ.	ITEM	PART NO.	DESCRIPTION	SYMBOL
		.032	THE TECHNICAL MATERIEL CORP. MAMARONECK. NEW YORK	
		STOCK SIZE		
		ALUMINUM	NAME PLATE	
		MATERIAL	WEIGHT PER PC.	
		250		
		TYPE & TEMPER		
			DRAWN	ELEC. DES. APP. MECH. DES. APP.
			e. S. D.	
		HEAT TREAT. SPEC.	CHECKED	FINAL APPROVAL
		BLACK MATTE BACK GROUND & CLEAR LACQUER		NP-131   B
		FINISH & SPEC. NO.		

B	1	NEW TMC INSIGNIA ADDED	8/7/62	7046	MJT	JHC	WDC
A	1	MATTE WAS ETCHED	4/15/54	1	COO	JHC	WDC
ISSUE	ITEM	CHANGED FROM	DATE	CN. NO.	DRAFTS	CHECKER	ENG. APP.

TOLERANCES

SCALE FULL

ALL OTHERS  
DEC. DIM.  $\pm$   
FRAC. DIM.  $\pm$   
ANGULAR DIM.  $\pm$

DRILL, PUNCH, COMMERCIAL STOCK  
SIZES AND MANUFACTURERS  
TOLERANCES ARE NOT INCLUDED.





IF IT IS FOUND DESIRABLE TO CHANGE ANY TOLERANCE OR OTHER DETAIL SPECIFIED ON THIS DRAWING NOTIFY THE PURCHASER PROMPTLY.

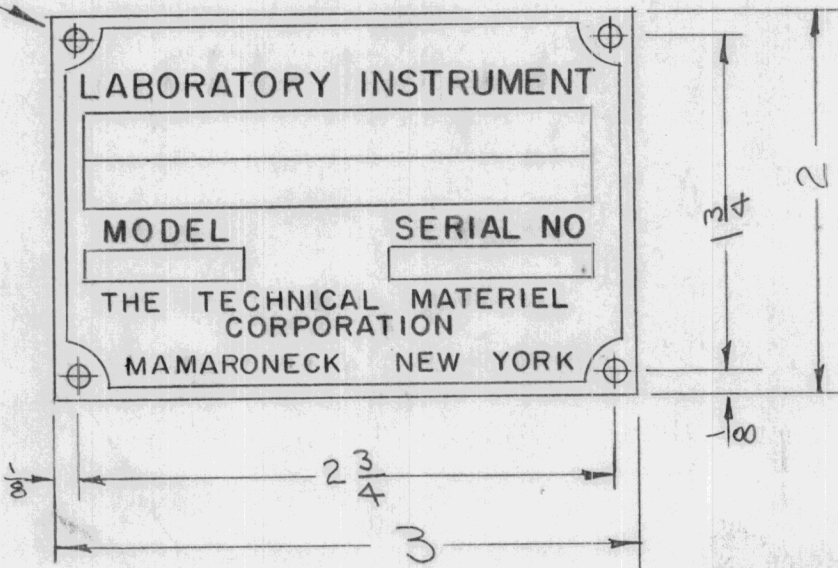
NP-133 A

MAXIMUM ALLOWABLE TOLERANCES HAVE BEEN DETERMINED AND DEVIATIONS WILL BE CAUSE FOR REJECTION. REMOVE ALL BURRS AND SHARP EDGES

USED ON

MODEL PROJECT NO. ASS'Y. NO. DATE

1/8" 4 HOLES



NOTE  
ALL LETTERING APPROX. TO SCALE

REQ.	ITEM	PART NO.	DESCRIPTION	SYMBOL
		.032	THE TECHNICAL MATERIEL CORP. MAMARONECK, NEW YORK	
		STOCK SIZE		
		ALUMINUM	NAME PLATE	
		MATERIAL	WEIGHT PER PC.	
		250		
		TYPE & TEMPER		
			DRAWN	ELEC. DES. APP.
				MECH. DES. APP.
		HEAT TREAT. SPEC.	CHECKED	FINAL APPROVAL
		BLACK MATTE BACK GROUND & CLEAR LACQUER		
		FINISH & SPEC. NO.		

A	1	MATTE WAS ETCHED	1/15/54	1	COB	FAIR	WOL
ISSUE	ITEM	CHANGED FROM	DATE	CN. NO.	DRAFTS	CHECKER	ENG. APP.

TOLERANCES		SCALE
ALL OTHERS	DEC. DIM. ± FRAC. DIM. ± ANGULAR DIM. ±	DRILL, PUNCH, COMMERCIAL STOCK SIZES AND MANUFACTURERS TOLERANCES ARE NOT INCLUDED.

NP-133 A



IF IT IS FOUND DESIRABLE TO CHANGE ANY TOLERANCE OR OTHER DETAIL SPECIFIED ON THIS DRAWING NOTIFY THE PURCHASER PROMPTLY.

NP-134

MAXIMUM ALLOWABLE TOLERANCES HAVE BEEN DETERMINED AND DEVIATIONS WILL BE CAUSE FOR REJECTION. REMOVE ALL BURRS AND SHARP EDGES

Req.  
Per  
UNIT

USED ON

MODEL

PROJECT NO.

ASS'Y. NO.

DATE

1

XFK

THIS APPARATUS USES INVENTIONS OF UNITED STATES PATENTS LICENSED BY RADIO CORPORATION OF AMERICA PATENT NUMBERS SUPPLIED ON REQUEST THE TECHNICAL MATERIEL CORPORATION MAMARONECK, NEW YORK, U.S.A.

00

2 1/2

NOTE  
LETTERING APPROX. TO SCALE.  
SPEEDY-CALS

REF. NORTH SHORE NAMEPLATE CO.

REQ.	ITEM	PART NO.	DESCRIPTION	SYMBOL
			THE TECHNICAL MATERIEL CORP. MAMARONECK. NEW YORK	
		STOCK SIZE		
	ALUMINUM		NAME PLATE, PATENT	
	MATERIAL	WEIGHT PER PC.		
	ANODIZED			
	TYPE & TEMPER		<i>fado</i>	<i>A.J.J.</i>
			DRAWN	ELEC. DES. APP.
			<i>CD</i>	MECH. DES. APP.
			CHECKED	FINAL APPROVAL
		HEAT TREAT. SPEC.		
		FINISH & SPEC. NO.		

ISSUE ITEM CHANGED FROM DATE CN. NO. DRAFTS CHECKER ENG. APP.

TOLERANCES

SCALE FULL

ALL OTHERS  
DEC. DIM. ±  
FRAC. DIM. ±  
ANGULAR DIM. ±

DRILL, PUNCH, COMMERCIAL STOCK SIZES AND MANUFACTURERS TOLERANCES ARE NOT INCLUDED.

BLACK BACKGROUND  
W/ WHITE LETTERS

NP-134

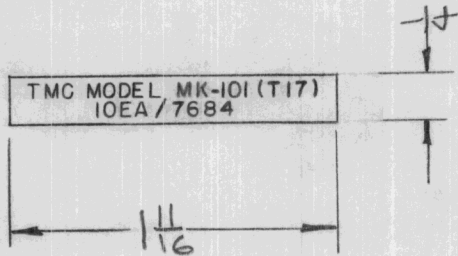
IF IT IS FOUND DESIRABLE TO CHANGE ANY TOLERANCE OR OTHER DETAIL SPECIFIED ON THIS DRAWING NOTIFY THE PURCHASER PROMPTLY.

NP-135

MAXIMUM ALLOWABLE TOLERANCES HAVE BEEN DETERMINED AND DEVIATIONS WILL BE CAUSE FOR REJECTION. REMOVE ALL BURRS AND SHARP EDGES

USED ON

MODEL	PROJECT NO.	ASS'Y. NO.	DATE
MK-101			12-11-53



LETTERING APPROX. 5/64 HIGH  
 BLACK BACKGROUND WITH  
 SILVER LETTERING AND A  
 SILVER BORDER

REF: STANDARD DECAL

REQ.	ITEM	PART NO.	DESCRIPTION	SYMBOL
			THE TECHNICAL MATERIEL CORP. MAMARONECK. NEW YORK	
		STOCK SIZE	NAME PLATE	
		DECALCOMANIA	MODEL MK-101	
		MATERIAL		
		WEIGHT PER PC.		
		TYPE & TEMPER		
			DRAWN	ELEC. DES. APP.
			C.R.A.	MECH. DES. APP.
		HEAT TREAT. SPEC.	CHECKED	FINAL APPROVAL
		FINISH & SPEC. NO.		NP-135

ISSUE	ITEM	CHANGED FROM	DATE	CN. NO.	DRAFTS	CHECKER	ENG. APP.
TOLERANCES			SCALE FULL				
ALL OTHERS	DEC. DIM. ± FRAC. DIM. ± ANGULAR DIM. ±		DRILL, PUNCH, COMMERCIAL STOCK SIZES AND MANUFACTURERS TOLERANCES ARE NOT INCLUDED.				





IF IT IS FOUND DESIRABLE TO CHANGE ANY TOLERANCE OR OTHER DETAIL SPECIFIED ON THIS DRAWING NOTIFY THE PURCHASER PROMPTLY.

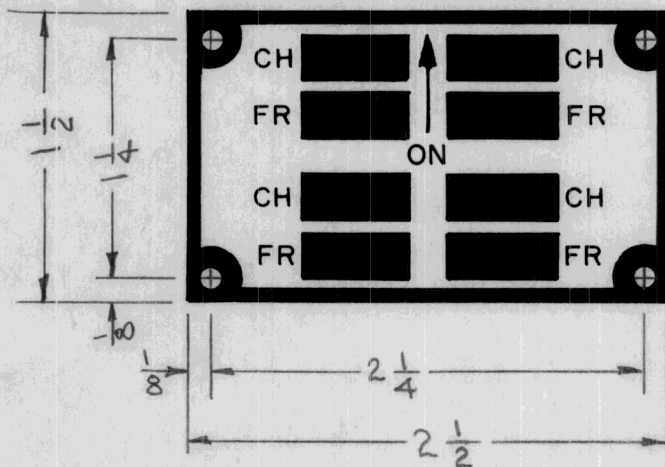
**NP-138**

MAXIMUM ALLOWABLE TOLERANCES HAVE BEEN DETERMINED AND DEVIATIONS WILL BE CAUSE FOR REJECTION. REMOVE ALL BURRS AND SHARP EDGES

USED ON

MODEL	PROJECT NO.	ASS'Y. NO.	DATE
TST			1-10-57
TSR			1-10-57

**NOTE:**  
3/32 D HOLES  
4 REQ.



FINAL PRODUCT TO BE WHITE  
ON BLACK BACKGROUND.  
LETTERING & BLOCKS APPROX. TO SCALE.

REQ.	ITEM	PART NO.	DESCRIPTION	SYMBOL
		.060	THE TECHNICAL MATERIEL CORP. MAMARONECK, NEW YORK	
		STOCK SIZE		
		VINYLLITE	<b>CHANNEL DESIGNATOR</b>	
		MATERIAL	Model TST & TSR	
		WEIGHT PER PC.		
		LAMINATION		
		TYPE & TEMPER	<i>[Signature]</i>	<i>[Signature]</i>
			DRAWN	ELEC. DES. APP. MECH. DES. APP.
			<i>[Signature]</i>	<i>[Signature]</i>
		HEAT TREAT. SPEC.	CHECKED	FINAL APPROVAL
		MATTE		<b>NP-138</b>
		FINISH & SPEC. NO.		

ISSUE	ITEM	CHANGED FROM	DATE	CN. NO.	DRAFTS	CHECKER	ENG. APP.
TOLERANCES		SCALE FULL SIZE					
ALL OTHERS	DEC. DIM. ± FRAC. DIM. ± ANGULAR DIM. ±	DRILL, PUNCH, COMMERCIAL STOCK SIZES AND MANUFACTURERS TOLERANCES ARE NOT INCLUDED.					





IF IT IS FOUND DESIRABLE TO CHANGE ANY TOLERANCE OR OTHER DETAIL SPECIFIED ON THIS DRAWING NOTIFY THE PURCHASER PROMPTLY.

NP-140 A

MAXIMUM ALLOWABLE TOLERANCES HAVE BEEN DETERMINED AND DEVIATIONS WILL BE CAUSE FOR REJECTION. REMOVE ALL BURRS AND SHARP EDGES

USED ON

MODEL

PROJECT NO.

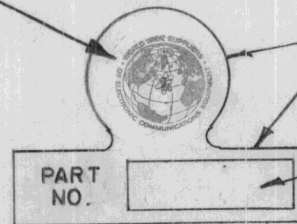
ASS'Y. NO.

DATE

NOTE:

- 1-BACKGROUND TO BE TRANSPARENT.
- 2-SEE NP-117 FOR TRADE MARK ART WORK.
- 3-LETTERS TO BE BLACK.

TMC INSIGNIA  
(REF. NP-493)



OUTLINE OF DECAL, NOT TO BE PRINTED

WHITE FILL TO PERMIT RUBBER STAMPING OF PART NUMBER, I.E.

FX-100

APPROX. FULL SCALE

REQ.	ITEM	PART NO.	DESCRIPTION	SYMBOL
			<b>THE TECHNICAL MATERIEL CORP.</b> MAMARONECK. NEW YORK	
		STOCK SIZE		
		DECAL.COMANIA	NAME PLATE, PART NO.	
		MATERIAL	WEIGHT PER PC.	
		TYPE & TEMPER	JAD 2/15/54	G.T.O
ISSUE	ITEM	CHANGED FROM	DATE	CN. NO. DRAFTS CHECKER ENG. APP.
TOLERANCES		SCALE		
ALL OTHERS	DEC. DIM. ± FRAC. DIM. ± ANGULAR DIM. ±	DRILL, PUNCH, COMMERCIAL STOCK SIZES AND MANUFACTURERS TOLERANCES ARE NOT INCLUDED.		
		HEAT TREAT. SPEC.	CHECKED	FINAL APPROVAL
		FINISH & SPEC. NO.		

NP-140 A



IF IT IS FOUND DESIRABLE TO CHANGE ANY TOLERANCE OR OTHER DETAIL SPECIFIED ON THIS DRAWING NOTIFY THE PURCHASER PROMPTLY.

NP-141 | C

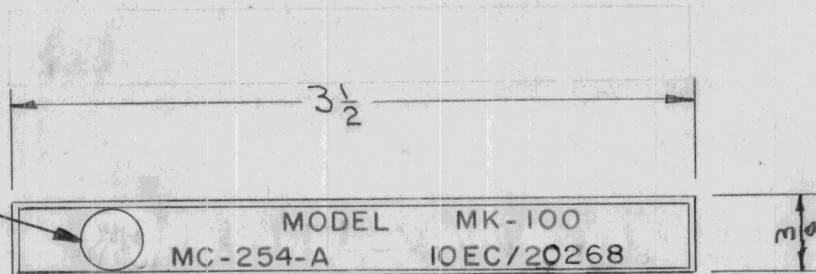
MAXIMUM ALLOWABLE TOLERANCES HAVE BEEN DETERMINED AND DEVIATIONS WILL BE CAUSE FOR REJECTION. REMOVE ALL BURRS AND SHARP EDGES

USED ON

MODEL	PROJECT NO.	ASS'Y. NO.	DATE
-------	-------------	------------	------

NOTE:  
SILVER LETTERING ON  
BLACK BACKGROUND.

TMC INSIGNIA  
(REF. NP-493)



ISSUE	ITEM	CHANGED FROM	DATE	CN. NO.	DRAFTS	CHECKER	ENG. APP.
C	1	NEW TMC INSIGNIA ADDED	8/1/62	7046	MJT	JAD	AMP
B	2	WAS IOEC/202268	7/19/54	2	JAD	AMP	AMP
A	1	MC-254-A, IOEC/202268 Added	6/22/54	1	JAD	AMP	AMP

TOLERANCES		SCALE
ALL OTHERS	DEC. DIM. ± FRAC. DIM. ± ANGULAR DIM. ±	DRILL, PUNCH, COMMERCIAL STOCK SIZES AND MANUFACTURERS TOLERANCES ARE NOT INCLUDED.

REQ.	ITEM	PART NO.	DESCRIPTION	SYMBOL
			THE TECHNICAL MATERIEL CORP. MAMARONECK, NEW YORK	
			STOCK SIZE	
			DECALCOMANIA	
			MATERIAL	WEIGHT PER PC.
			NAME PLATE	
			MODEL MK-100	
			TYPE & TEMPER	
			DRAWN	ELEC. DES. APP.
			CHECKED	MECH. DES. APP.
			HEAT TREAT. SPEC.	FINAL APPROVAL
			SEE NOTE	
			FINISH & SPEC. NO.	

NP-141 | C

IF IT IS FOUND DESIRABLE TO CHANGE ANY TOLERANCE OR OTHER DETAIL SPECIFIED ON THIS DRAWING NOTIFY THE PURCHASER PROMPTLY.

NP-142

A

MAXIMUM ALLOWABLE TOLERANCES HAVE BEEN DETERMINED AND DEVIATIONS WILL BE CAUSE FOR REJECTION. REMOVE ALL BURRS AND SHARP EDGES

REQ. PER UNIT

USED ON

MODEL

PROJECT NO.

ASS'Y. NO.

DATE

1

CTAC

6-24-54

TMC INSIGNIA  
(REF. NP-493)



CASE  
PROTECTIVE  
MODEL CTAC

THE TECHNICAL MATERIEL  
CORPORATION  
MAMARONECK NEW YORK

NOTE :  
LETTERING APPROX. TO SCALE.

REQ.	ITEM	PART NO.	DESCRIPTION	SYMBOL
			THE TECHNICAL MATERIEL CORP. MAMARONECK. NEW YORK	
		STOCK SIZE		
		ALUMINUM	NAME PLATE	
		MATERIAL WEIGHT PER PC.	MODEL CTAC	
		ANODIZED	<i>JAIDe 6-24-54</i>	<i>APP</i>
		TYPE & TEMPER	DRAWN	ELEC. DES. APP. MECH. DES. APP.
		HEAT TREAT. SPEC.	<i>APP</i>	
		BLACK BACK GROUND W/ WHITE LETTERS	CHECKED	FINAL APPROVAL
		FINISH & SPEC. NO.		NP-142

A	NEW TMC INSIGNIA ADDED	8/8/54	71046	HJT	<i>file</i>	<i>APP</i>	
ISSUE	ITEM	CHANGED FROM	DATE	CN. NO.	DRAFTS	CHECKER	ENG. APP.
TOLERANCES			SCALE FULL				
ALL OTHERS	DEC. DIM. ± FRAC. DIM. ± ANGULAR DIM. ±		DRILL, PUNCH, COMMERCIAL STOCK SIZES AND MANUFACTURERS TOLERANCES ARE NOT INCLUDED.				



IF IT IS FOUND DESIRABLE TO CHANGE ANY TOLERANCE OR OTHER DETAIL SPECIFIED ON THIS DRAWING NOTIFY THE PURCHASER PROMPTLY.

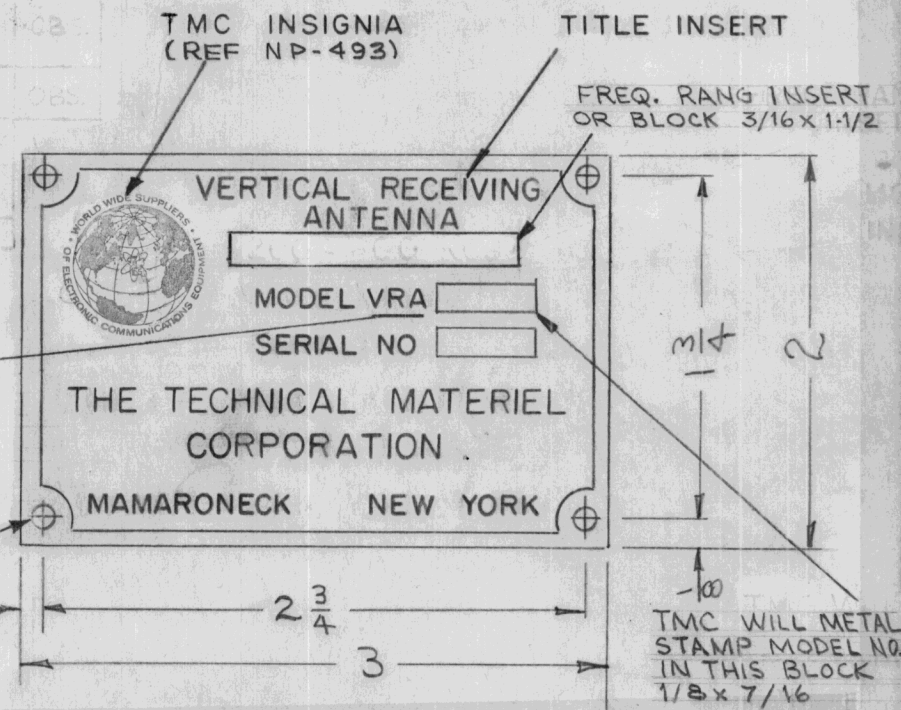
NP-143 H

MAXIMUM ALLOWABLE TOLERANCES HAVE BEEN DETERMINED AND DEVIATIONS WILL BE CAUSE FOR REJECTION. REMOVE ALL BURRS AND SHARP EDGES

REQ PER UNIT	USED ON			
	MODEL	PROJECT NO.	ASS'Y. NO.	DATE
1	VRA-1	259		7.30.54
1	VRA-2	259		7.30.54
1	VRA-2A			2.24.56

TMC NO	TITLE INSERT	FREQ. RANGE	MODEL LETTER INSERT (BY MFR.)	MODEL NUMBER INSERT (BY TMC)	
NP-143-1	VERTICAL RECEIVING ANTENNA	200-800KCS	VRA-1		OBS.
NP-143-2	VERTICAL RECEIVING ANTENNA	2-30MCS	VRA-2		OBS.
NP-143-3	VERTICAL RECEIVING ANTENNA	2-30MCS	VRA-2A		OBS.
NP-143-4	VERTICAL RECEIVING ANTENNA	200-800KCS	VRA	5	OBS.
NP-143-5	VERTICAL RECEIVING ANTENNA	2-32MCS	VRA	6	OBS.
NP-143-6	VERTICAL RECEIVING ANTENNA	3-15MCS	VRA	7	OBS.
NP-143-7	VERTICAL RECEIVING ANTENNA	BLANK	VRA	AS REQ'D	

MODEL LETTER INSERT  
NOTE: NAMEPLATE MFG. WILL ETCH MODEL LETTERS ON NAMEPLATE AS PER CHART



H		ADDED NP143-7.4 OBS TO -4,-5,-6. ADD DIMS TO MOD. & FREQ RANG BOX.	12-9-66	17431	RME	<i>JCB</i>	<i>WJS</i>
G	1	ON (-5) FR. RANGE WAS 2-30MCS	12.30.64	13028	WJB	<i>WJB</i>	<i>WJB</i>
F	1	NP-143-6 ADDED	1-3-63	7957	<i>WJB</i>	<i>WJB</i>	<i>WJB</i>
E	1	NEW TMC INSIGNIA ADDED	8/7/62	7046	MJT	<i>MJT</i>	<i>MJT</i>
D	3	Model Insert Note Added					
	2	Metal Stamp Note Added	11-15-61	5877	EG	<i>EG</i>	<i>EG</i>
	1	NP-143-4,5 Added; Chart Revised					
C	1	NP-143-3 Added	7-28-56	3	<i>WJB</i>	<i>WJB</i>	<i>WJB</i>
B	1	NP-143-2A Added	2/24/54	2	<i>WJB</i>	<i>WJB</i>	<i>WJB</i>
A	1	MATTE WAS ETCHED	1/15/54	1	<i>WJB</i>	<i>WJB</i>	<i>WJB</i>

ISSUE	ITEM	CHANGED FROM	DATE	CN. NO.	DRAFTS	CHECKER	ENG. APP.
TOLERANCES		SCALE					
ALL OTHERS	DEC. DIM. ± FRAC. DIM. ± ANGULAR DIM. ±	DRILL, PUNCH, COMMERCIAL STOCK SIZES AND MANUFACTURERS TOLERANCES ARE NOT INCLUDED.					

REQ. ITEM	PART NO.	DESCRIPTION	SYMBOL
	.032	THE TECHNICAL MATERIEL CORP. MAMARONECK, NEW YORK	
	STOCK SIZE	ALUMINUM	NAME PLATE
	MATERIAL	WEIGHT PER PC.	VRA
	1100-0		
	TYPE & TEMPER		
		DRAWN	ELEC. DES. APP.
		CHECKED	FINAL APPROVAL
	HEAT TREAT. SPEC.		
	BLACK MATTE BACKGROUND & CLEAR LACQUER		
	FINISH & SPEC. NO.		

NP-143 H

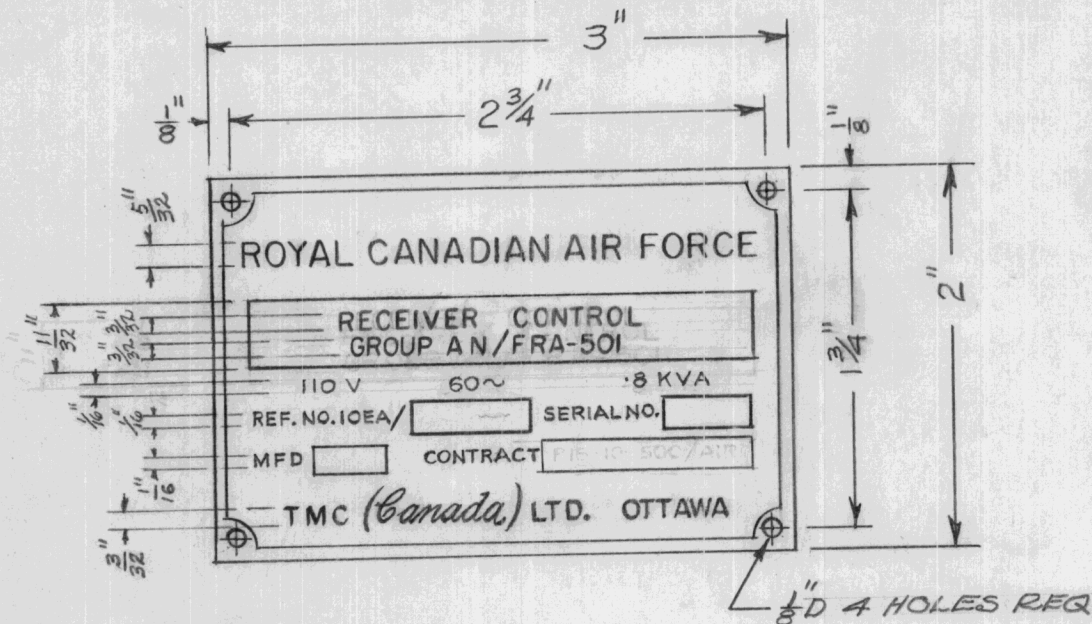
IF IT IS FOUND DESIRABLE TO CHANGE ANY TOLERANCE OR OTHER DETAIL SPECIFIED ON THIS DRAWING NOTIFY THE PURCHASER PROMPTLY.

MAXIMUM ALLOWABLE TOLERANCES HAVE BEEN DETERMINED AND DEVIATIONS WILL BE CAUSE FOR REJECTION. REMOVE ALL BURRS AND SHARP EDGES

NP-144-A

USED ON

MODEL	CONTRACT NO	ASS'Y. NO.	DATE
AN/FRA-501	P18-10-500/AIR		9-4-56



NOTES:

1. S-220 Blue Gray Etched Background and Clear Lacquer.
2. Stamp Blocks to be large enough to accommodate 1/16" numbers.
3. Relative heights of type shall be adhered to in multiples on reductions of these sizes, in order that uniform balance and dominance of set or component designation and the title ROYAL CANADIAN AIR FORCE be maintained.

NO MODIFICATION PLATE TO BE FITTED.

REQ.	ITEM	PART NO.	DESCRIPTION	SYMBOL
			<b>TMC (Canada) LIMITED</b> OTTAWA ONTARIO	
		STOCK SIZE	NAMEPLATE R.C.A.F	
		MATERIAL WEIGHT PER PC.	SET AN/FRR-501 (TMC R.C.R.)	
		TYPE & TEMPER	E.L.	
			DRAWN	ELEC. DES. APP. MECH. DES. APP.
		HEAT TREAT. SPEC.	CHECKED	FINAL APPROVAL
		FINISH & SPEC. NO.		NP-144 A

A	1	CONTRACT NO DELETED-DWG	9-4-56	EG			
ISSUE	ITEM	CHANGED FROM	DATE	CN. NO.	DRAFTS	CHECKER	ENG. APP.
TOLERANCES			SCALE				
ALL OTHERS	DEC. DIM. ± FRAC. DIM. ± ANGULAR DIM. ±		DRILL, PUNCH, COMMERCIAL STOCK SIZES AND MANUFACTURERS TOLERANCES ARE NOT INCLUDED.				



IF IT IS FOUND DESIRABLE TO CHANGE ANY TOLERANCE OR OTHER DETAIL SPECIFIED ON THIS DRAWING NOTIFY THE PURCHASER PROMPTLY.

MAXIMUM ALLOWABLE TOLERANCES HAVE BEEN DETERMINED AND DEVIATIONS WILL BE CAUSE FOR REJECTION. REMOVE ALL BURRS AND SHARP EDGES

USED ON

MODEL

CONTRACT NO.

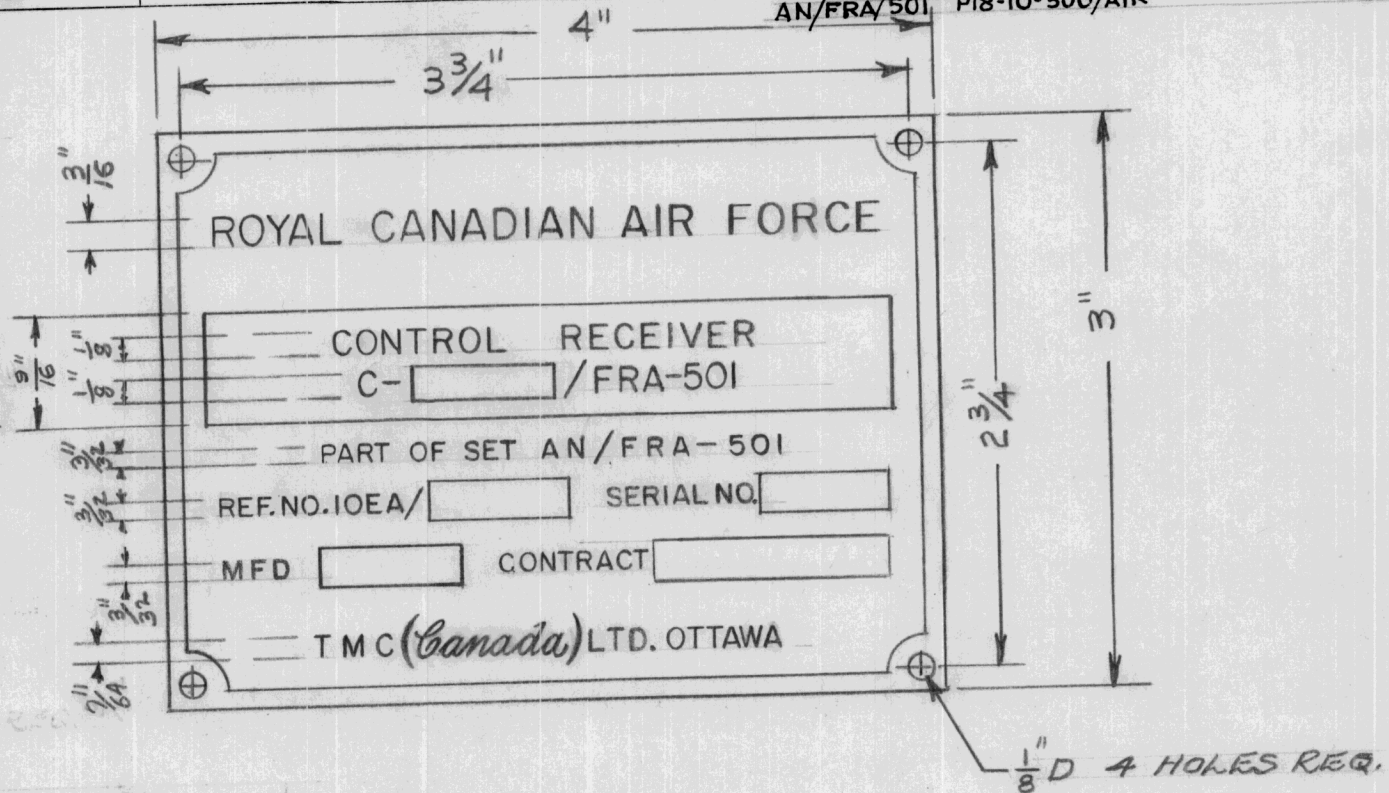
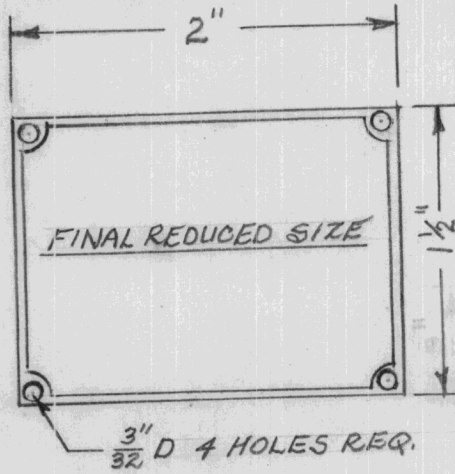
ASS'Y. NO.

DATE

AN/FRA/501

PI8-10-500/AIR

9-4-56



NOTES:

1. S-220 Blue Gray Etched Background and Clear Lacquer.
2. Stamp Blocks to be Large Enough to Accommodate 1/16" Numbers.
3. Relative heights of type shall be adhered to in multiples on reductions of these sizes, in order that uniform balance and dominance of set or component designation and the title ROYAL CANADIAN AIR FORCE be maintained.

MODIFICATION PLATE TO BE FITTED ON REAR - REFER DWG. NP-10006

REQ.	ITEM	PART NO.	DESCRIPTION	SYMBOL
			<b>TMC (Canada) LIMITED</b> OTTAWA ONTARIO	
			NAMEPLATE R.C.A.F	
			AN/FRA-501 COMPONENT (RSC)	
			E.L.	
			DRAWN	ELEC. DES. APP. MECH. DES. APP.
			CHECKED	FINAL APPROVAL
				NP-145
				A

A	1	CONTRACT NO DELETED - DWG. 9-4-56	E.G					
ISSUE	ITEM	CHANGED FROM	DATE	CN. NO.	DRAFTS	CHECKER	ENG. APP.	
TOLERANCES			SCALE					
ALL OTHERS	DEC. DIM. ± FRAC. DIM. ± ANGULAR DIM. ±		DRILL, PUNCH, COMMERCIAL STOCK SIZES AND MANUFACTURERS TOLERANCES ARE NOT INCLUDED.					

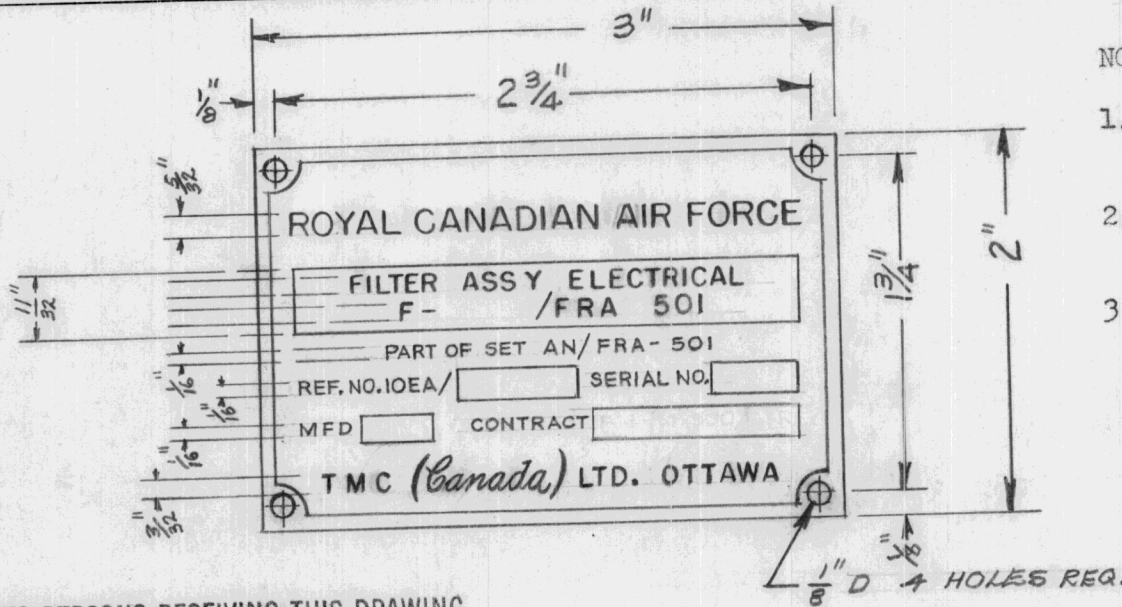
NP-146-A

IF IT IS FOUND DESIRABLE TO CHANGE ANY TOLERANCE OR OTHER DETAIL SPECIFIED ON THIS DRAWING NOTIFY THE PURCHASER PROMPTLY.

MAXIMUM ALLOWABLE TOLERANCES HAVE BEEN DETERMINED AND DEVIATIONS WILL BE CAUSE FOR REJECTION. REMOVE ALL BURRS AND SHARP EDGES

USED ON

MODEL	CONTRACT NO	ASS'Y. NO.	DATE
F - /FRA-501	PI8-10-500/AIR		9-4-56



NOTES:

1. S-220 Blue Gray Etched Background and Clear Lacquer.
2. Stamp Blocks to be Large Enough to Accommodate 1/16" Numbers.
3. Relative heights of type shall be adhered to in multiples on reductions of these sizes, in order that uniform balance and dominance of set or component designation and the title ROYAL CANADIAN AIR FORCE be maintained.

NOTICE TO PERSONS RECEIVING THIS DRAWING

THE TECHNICAL MATERIEL CORPORATION claims proprietary right in the material disclosed hereon. This drawing is issued in confidence for engineering information only and may not be reproduced or used to manufacture anything shown hereon without permission from THE TECHNICAL MATERIEL CORPORATION to the user. This drawing is loaned for mutual assistance and is subject to recall at any time.

Property of:

THE TECHNICAL MATERIEL CORPORATION  
MAMARONECK, NEW YORK

MODIFICATION PLATE TO BE FITTED ON FRONT BELOW NAMEPLATE RE-DWG/NP10006

REQ.	ITEM	PART NO.	DESCRIPTION	SYMBOL
			<b>TMC (Canada) LIMITED</b> OTTAWA ONTARIO	
		STOCK SIZE	NAMEPLATE R.C.A.F	
		MATERIAL WEIGHT PER PC.	F - /FRA-501 (TMC PCB)	
		TYPE & TEMPER	E.I.L	
		HEAT TREAT. SPEC.	DRAWN	ELEC. DES. APP. MECH. DES. APP.
		FINISH & SPEC. NO.	CHECKED	FINAL APPROVAL

A	I	CONTRACT NO DELETED - DWG 9-4-56	E. G		
ISSUE	ITEM	CHANGED FROM	DATE	CN. NO.	DRAFTS CHECKER ENG. APP.
TOLERANCES		SCALE			
ALL OTHERS	DEC. DIM. ± FRAC. DIM. ± ANGULAR DIM. ±	DRILL, PUNCH, COMMERCIAL STOCK SIZES AND MANUFACTURERS TOLERANCES ARE NOT INCLUDED.			

NP-146

A



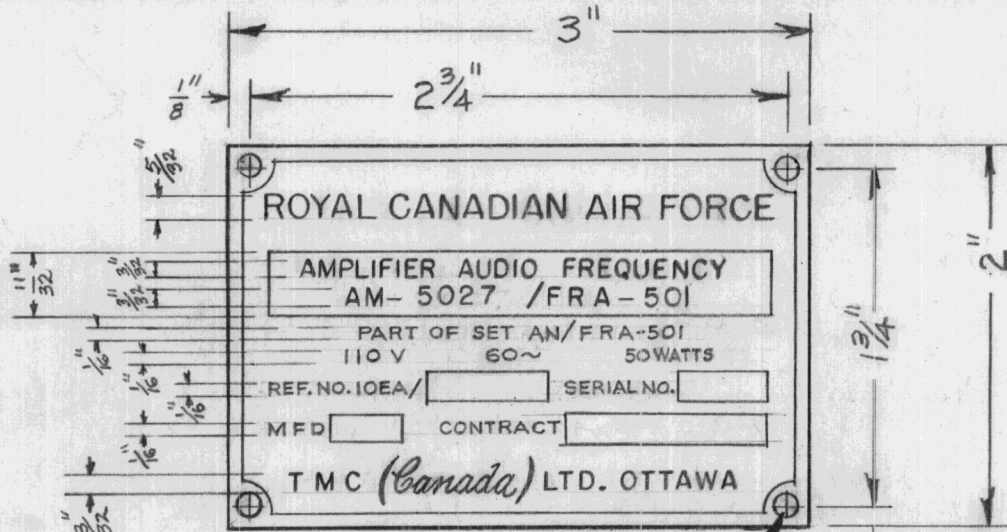
IF IT IS FOUND DESIRABLE TO CHANGE ANY TOLERANCE OR OTHER DETAIL SPECIFIED ON THIS DRAWING NOTIFY THE PURCHASER PROMPTLY.

MAXIMUM ALLOWABLE TOLERANCES HAVE BEEN DETERMINED AND DEVIATIONS WILL BE CAUSE FOR REJECTION. REMOVE ALL BURRS AND SHARP EDGES

NP-147-A

USED ON

MODEL	CONTRACT NO	ASS'Y. NO.	DATE
AM-5027/FRA-501	PI8-10-500/AIR		9-4-56



NOTES:

1. S-220 Blue Gray Etched Background and Clear Lacquer.
2. Stamp Blocks to be large enough to accommodate 1/16" numbers.
3. Relative heights of type shall be adhered to in multiples on reductions of these sizes, in order that uniform balance and dominance of set or component designation and the title ROYAL CANADIAN AIR FORCE be maintained.

NOTICE TO PERSONS RECEIVING THIS DRAWING

THE TECHNICAL MATERIEL CORPORATION claims proprietary right in the material disclosed hereon. This drawing is issued in confidence for engineering information only and may not be reproduced or used to manufacture anything shown hereon without permission from THE TECHNICAL MATERIEL CORPORATION to the user. This drawing is loaned for mutual assistance and is subject to recall at any time.

Property of:

THE TECHNICAL MATERIEL CORPORATION  
MAMARONECK, NEW YORK

MODIFICATION PLATE TO BE FITTED ON FRONT REFER DWG. NP10006

REQ.	ITEM	PART NO.	DESCRIPTION	SYMBOL
			<b>TMC (Canada) LIMITED</b> OTTAWA ONTARIO	
		STOCK SIZE	NAMEPLATE R.C.A.F	
		MATERIAL	WEIGHT PER PC.	AM-5027/FRA-501 (TMC RCR)
			E.L	
		TYPE & TEMPER	DRAWN	ELEC. DES. APP. MECH. DES. APP.
		HEAT TREAT. SPEC.	CHECKED	FINAL APPROVAL
		FINISH & SPEC. NO.		NP-147 A

ISSUE	ITEM	CHANGED FROM	DATE	CN. NO.	DRAFTS	CHECKER	ENG. APP.
A	1	CONTRACT NO DELETED - DWG	9-4-56		EG		
TOLERANCES		SCALE					
ALL OTHERS	DEC. DIM. ± FRAC. DIM. ± ANGULAR DIM. ±	DRILL, PUNCH, COMMERCIAL STOCK SIZES AND MANUFACTURERS TOLERANCES ARE NOT INCLUDED.					

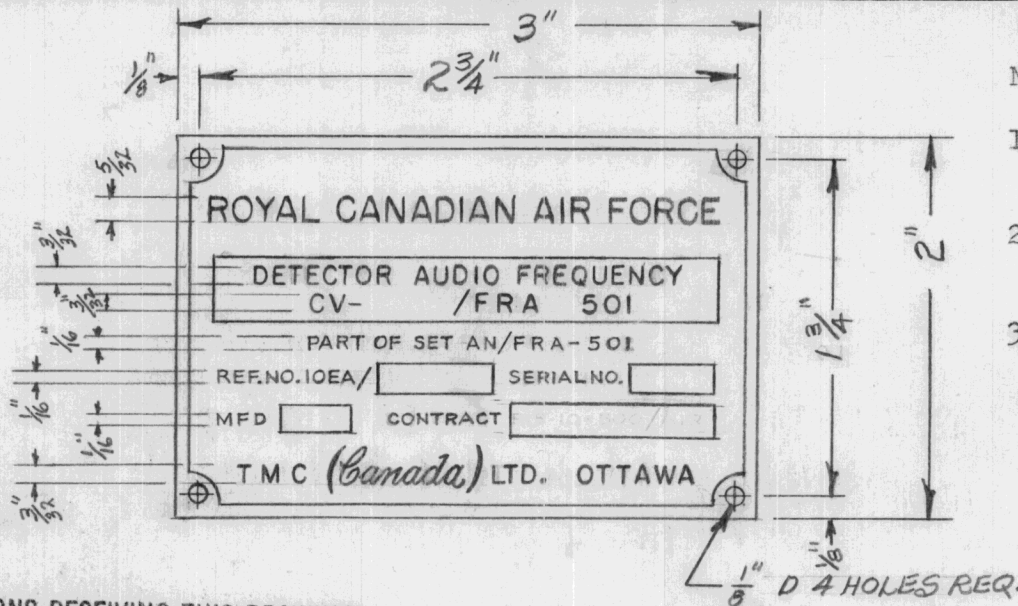
IF IT IS FOUND DESIRABLE TO CHANGE ANY TOLERANCE OR OTHER DETAIL SPECIFIED ON THIS DRAWING NOTIFY THE PURCHASER PROMPTLY.

NP-148-A

MAXIMUM ALLOWABLE TOLERANCES HAVE BEEN DETERMINED AND DEVIATIONS WILL BE CAUSE FOR REJECTION. REMOVE ALL BURRS AND SHARP EDGES

USED ON

MODEL	CONTRACT NO	ASS'Y. NO.	DATE
CV-FRA-501	PI8-10-500/AIR		9-4-56



NOTES:

1. S-220 Blue Gray Etched Background and Clear Lacquer.
2. Stamp Blocks to be Large Enough to Accommodate 1/16" Numbers.
3. Relative heights of type shall be adhered to in multiples on reductions of these sizes, in order that uniform balance and dominance of title ROYAL CANADIAN AIR FORCE be maintained.

NOTICE TO PERSONS RECEIVING THIS DRAWING

THE TECHNICAL MATERIEL CORPORATION claims proprietary right in the material disclosed hereon. This drawing is issued in confidence for engineering information only and may not be reproduced or used to manufacture anything shown hereon without permission from THE TECHNICAL MATERIEL CORPORATION to the user. This drawing is loaned for mutual assistance and is subject to recall at any time.

Property of:

THE TECHNICAL MATERIEL CORPORATION  
MAMARONECK, NEW YORK

MODIFICATION PLATE TO BE FITTED ON FRONT RE. DWG. NP10006

REQ.	ITEM	PART NO.	DESCRIPTION	SYMBOL
			<b>TMC (Canada) LIMITED</b>	
			OTTAWA ONTARIO	
			NAMEPLATE R.C.A.F	
			CV- /FRA-501 (RSD).	
			E.L.	
			DRAWN	ELEC. DES. APP. MECH. DES. APP.
			CHECKED	FINAL APPROVAL
				NP-148 A

A	I	CONTRACT NO	DELETED - DWG	9-4-56	E.G
ISSUE	ITEM	CHANGED FROM	DATE	CN. NO.	DRAFTS CHECKER ENG. APP.
TOLERANCES			SCALE		
ALL OTHERS	DEC. DIM. ±	FRAC. DIM. ±	ANGULAR DIM. ±	DRILL, PUNCH, COMMERCIAL STOCK SIZES AND MANUFACTURERS TOLERANCES ARE NOT INCLUDED.	
FINISH & SPEC. NO.					



NP-149-A

IF IT IS FOUND DESIRABLE TO CHANGE ANY TOLERANCE OR OTHER DETAIL SPECIFIED ON THIS DRAWING NOTIFY THE PURCHASER PROMPTLY.

MAXIMUM ALLOWABLE TOLERANCES HAVE BEEN DETERMINED AND DEVIATIONS WILL BE CAUSE FOR REJECTION. REMOVE ALL BURRS AND SHARP EDGES

USED ON

MODEL	CONTRACT NO	ASS'Y. NO.	DATE
PP5030 FRA-501	PI8-10-500/AIR		9-4-56



NOTES:

1. S-220 Blue Gray Etched Background and Clear Lacquer.
2. Stamp Blocks to be large enough to accommodate 1/16" numbers.
3. Relative heights of type shall be adhered to in multiples on reductions of these sizes, in order that uniform balance and dominance of set or component designation and the title ROYAL CANADIAN AIR FORCE be maintained.

NOTICE TO PERSONS RECEIVING THIS DRAWING

THE TECHNICAL MATERIEL CORPORATION claims proprietary right in the material disclosed hereon. This drawing is issued in confidence for engineering information only and may not be reproduced or used to manufacture anything shown hereon without permission from THE TECHNICAL MATERIEL CORPORATION to the user. This drawing is loaned for mutual assistance and is subject to recall at any time.

Property of:

THE TECHNICAL MATERIEL CORPORATION  
MAMARONECK, NEW YORK

MODIFICATION PLATE TO BE FITTED ON FRONT RE. DWG. NP10006

REQ.	ITEM	PART NO.	DESCRIPTION	SYMBOL
			<b>TMC (Canada) LIMITED</b> OTTAWA ONTARIO	
		STOCK SIZE	NAMEPLATE R.C.A.F	
		MATERIAL WEIGHT PER PC.	PP5030/FRA-501 (RSP)	
		TYPE & TEMPER	E.L.	
		HEAT TREAT. SPEC.	DRAWN	ELEC. DES. APP. MECH. DES. APP.
		FINISH & SPEC. NO.	CHECKED	FINAL APPROVAL
				NP-149 A

A	I	CONTRACT NO DELETED. DWG	9-4-56	E.G			
ISSUE	ITEM	CHANGED FROM	DATE	CN. NO.	DRAFTS	CHECKER	ENG. APP.
TOLERANCES			SCALE				
ALL OTHERS	DEC. DIM. ± FRAC. DIM. ± ANGULAR DIM. ±		DRILL, PUNCH, COMMERCIAL STOCK SIZES AND MANUFACTURERS TOLERANCES ARE NOT INCLUDED.				

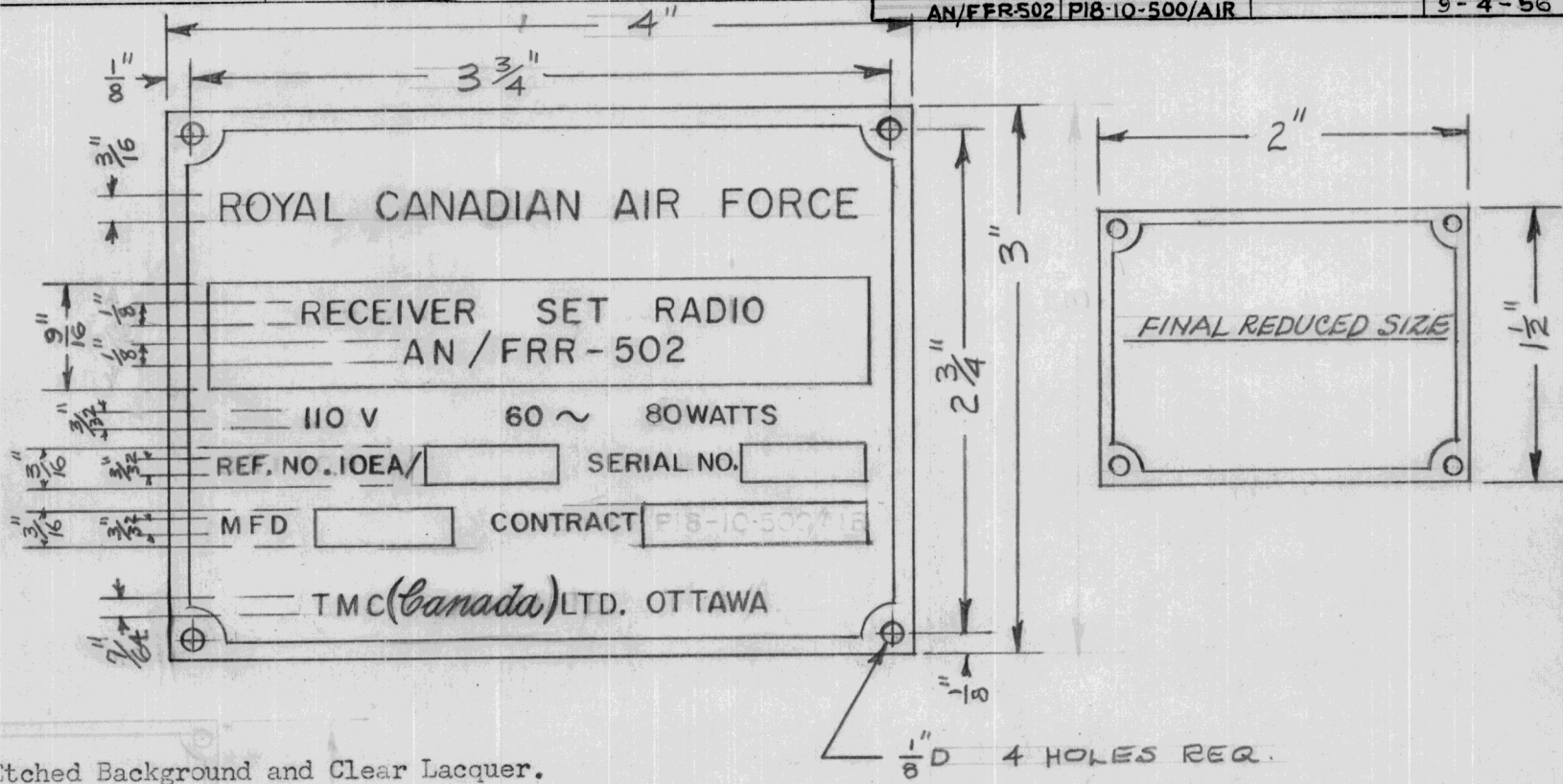
IF IT IS FOUND DESIRABLE TO CHANGE ANY TOLERANCE OR OTHER DETAIL SPECIFIED ON THIS DRAWING NOTIFY THE PURCHASER PROMPTLY.

NP-150-A

MAXIMUM ALLOWABLE TOLERANCES HAVE BEEN DETERMINED AND DEVIATIONS WILL BE CAUSE FOR REJECTION. REMOVE ALL BURRS AND SHARP EDGES

USED ON

MODEL	CONTRACT NO	ASS'Y. NO.	DATE
AN/FRR-502	PI8-10-500/AIR		9-4-56



NOTES:

1. S-220 Blue Gray Etched Background and Clear Lacquer.
2. Stamp Blocks to be Large Enough to Accommodate 1/16" Numbers.
3. Relative heights of type shall be adhered to in multiples on reductions of these sizes, in order that uniform balance and dominance of set or component designation and the title ROYAL CANADIAN AIR FORCE be maintained.

NO MODIFICATION PLATE TO BE FITTED.

REQ.	ITEM	PART NO.	DESCRIPTION	SYMBOL
			<b>TMC(Canada) LIMITED</b> OTTAWA ONTARIO	
			NAMEPLATE R.C.A.F	
			SET AN/FRR-502 (TMC FFR)	
			E.L.	
			DRAWN	ELEC. DES. APP. MECH. DES. APP.
			CHECKED	FINAL APPROVAL
				NP-150 A

A	1	CONTRACT NO DELETED - DWG	9-4-56	E.G			
ISSUE	ITEM	CHANGED FROM	DATE	CN. NO.	DRAFTS	CHECKER	ENG. APP.
TOLERANCES			SCALE				
ALL OTHERS	DEC. DIM. ± FRAC. DIM. ± ANGULAR DIM. ±		DRILL, PUNCH, COMMERCIAL STOCK SIZES AND MANUFACTURERS TOLERANCES ARE NOT INCLUDED.				



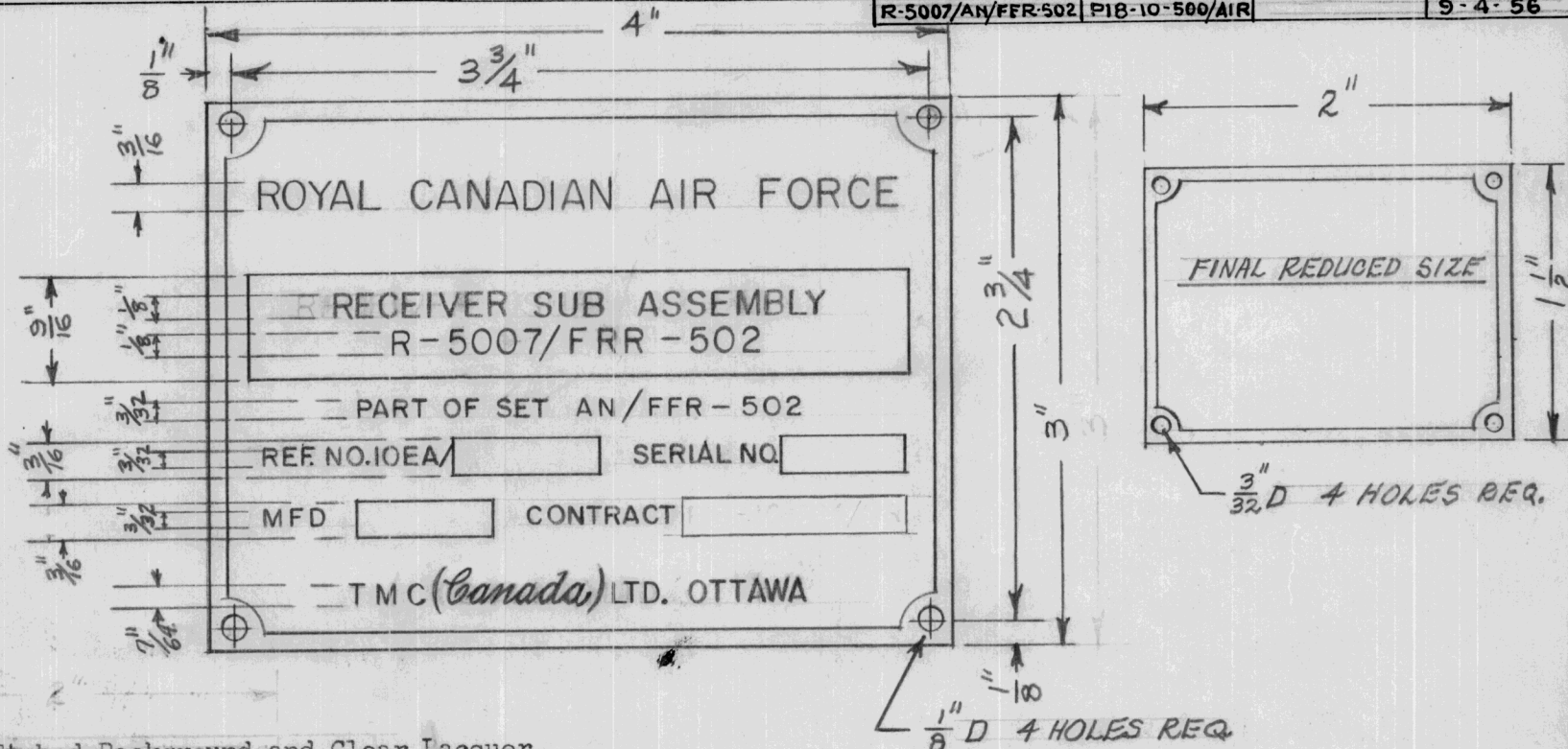
IF IT IS FOUND DESIRABLE TO CHANGE ANY TOLERANCE OR OTHER DETAIL SPECIFIED ON THIS DRAWING NOTIFY THE PURCHASER PROMPTLY.

NP-151-A

MAXIMUM ALLOWABLE TOLERANCES HAVE BEEN DETERMINED AND DEVIATIONS WILL BE CAUSE FOR REJECTION. REMOVE ALL BURRS AND SHARP EDGES

USED ON

MODEL	CONTRACT NO	ASS'Y. NO.	DATE
R-5007/AN/FFR-502	PI8-10-500/AIR		9-4-56



NOTES:

1. S-220 Blue Gray Etched Background and Clear Lacquer.
2. Stamp Blocks to be Large Enough to Accommodate 1/16" Numbers.
3. Relative heights of type shall be adhered to in multiples on reduction of these sizes, in order that uniform balance and dominance of set or component designation and the title ROYAL CANADIAN AIR FORCE be maintained.

MODIFICATION PLATE TO BE FITTED ON REAR OF RECEIVER REFER - DWG NO. NP-10006

REQ.	ITEM	PART NO.	DESCRIPTION	SYMBOL
			<b>TMC (Canada) LIMITED</b> OTTAWA ONTARIO	
		STOCK SIZE	NAME PLATE R.C.A.F	
		MATERIAL	R-5007/AN/FFR-502 (TMC:FFR)	
		WEIGHT PER PC.	E.L.	
		TYPE & TEMPER	DRAWN	ELEC. DES. APP. MECH. DES. APP.
		HEAT TREAT. SPEC.	CHECKED	FINAL APPROVAL
		FINISH & SPEC. NO.		

A	I	CONTRACT NO DELETED - DWG	9-4-56	E.G			
ISSUE	ITEM	CHANGED FROM	DATE	CN. NO.	DRAFTS	CHECKER	ENG. APP.
TOLERANCES			SCALE				
ALL OTHERS	DEC. DIM. ± FRAC. DIM. ± ANGULAR DIM. ±		DRILL, PUNCH, COMMERCIAL STOCK SIZES AND MANUFACTURERS TOLERANCES ARE NOT INCLUDED.				

NP-151

A

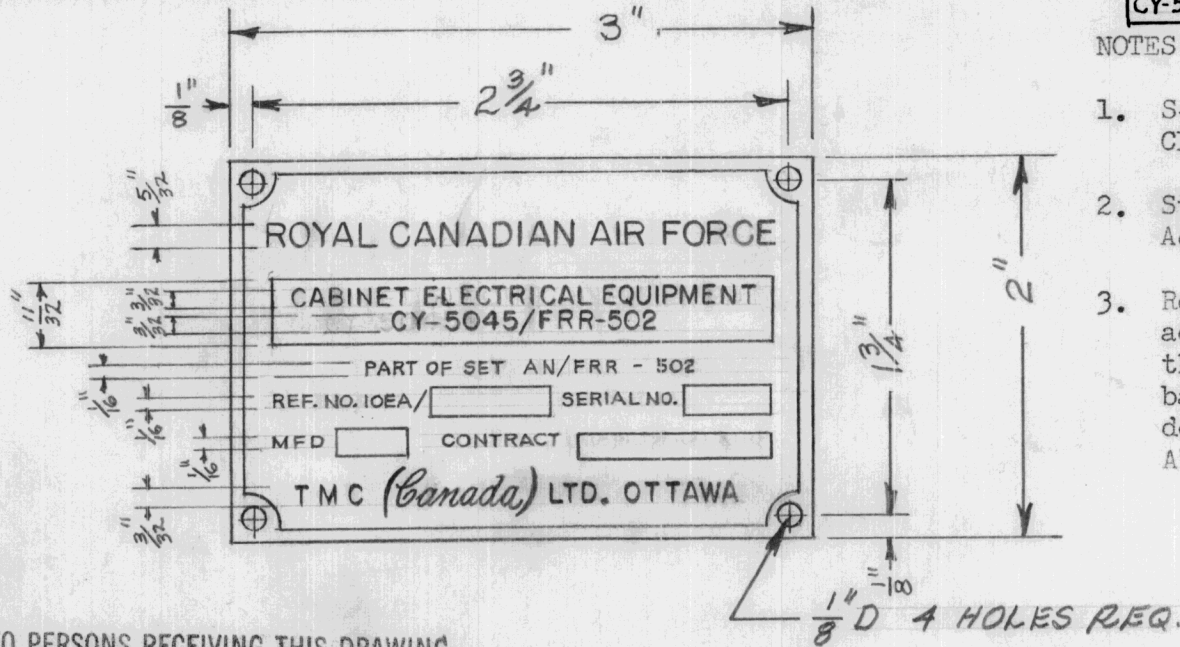
IF IT IS FOUND DESIRABLE TO CHANGE ANY TOLERANCE OR OTHER DETAIL SPECIFIED ON THIS DRAWING NOTIFY THE PURCHASER PROMPTLY.

MAXIMUM ALLOWABLE TOLERANCES HAVE BEEN DETERMINED AND DEVIATIONS WILL BE CAUSE FOR REJECTION. REMOVE ALL BURRS AND SHARP EDGES

NP-153-A

USED ON

MODEL	CONTRACT NO	ASS'Y. NO.	DATE
CY-5045/FFR-502	PI8-10-500/AIR		9-4-56



NOTES:

1. S-220 Blue Gray Etched Background and Clear Lacquer.
2. Stamp Blocks to be Large Enough to Accommodate 1/16" Numbers.
3. Relative heights of type shall be adhered to in multiples on reductions of these sizes, in order that uniform balance and dominance of set or components designation and the title ROYAL CANADIAN AIR FORCE be maintained.

NOTICE TO PERSONS RECEIVING THIS DRAWING

THE TECHNICAL MATERIEL CORPORATION claims proprietary right in the material disclosed hereon. This drawing is issued in confidence for engineering information only and may not be reproduced or used to manufacture anything shown hereon without permission from THE TECHNICAL MATERIEL CORPORATION to the user. This drawing is loaned for mutual assistance and is subject to recall at any time.

Property of:

THE TECHNICAL MATERIEL CORPORATION  
MAMARONECK, NEW YORK

RE. DWG NP-10006 NAMEPLATE TO BE FITTED ON REAR OF CABINET

REQ.	ITEM	PART NO.	DESCRIPTION	SYMBOL
			<b>TMC (Canada) LIMITED</b> OTTAWA ONTARIO	
		STOCK SIZE	NAMEPLATE R.C.A.F	
		MATERIAL	WEIGHT PER PC.	
			CY-5045/FFR-502 (TMC FFR-DP)	
		TYPE & TEMPER	E.L	
			DRAWN	ELEC. DES. APP. MECH. DES. APP.
		HEAT TREAT. SPEC.	CHECKED	FINAL APPROVAL
		FINISH & SPEC. NO.		NP-153 A

A	I	CONTRACT No DELETED - DWG	9-4-56	E. G			
ISSUE	ITEM	CHANGED FROM	DATE	CN. NO.	DRAFTS	CHECKER	ENG. APP.
TOLERANCES		SCALE					
ALL OTHERS	DEC. DIM. ± FRAC. DIM. ± ANGULAR DIM. ±	DRILL, PUNCH, COMMERCIAL STOCK SIZES AND MANUFACTURERS TOLERANCES ARE NOT INCLUDED.					

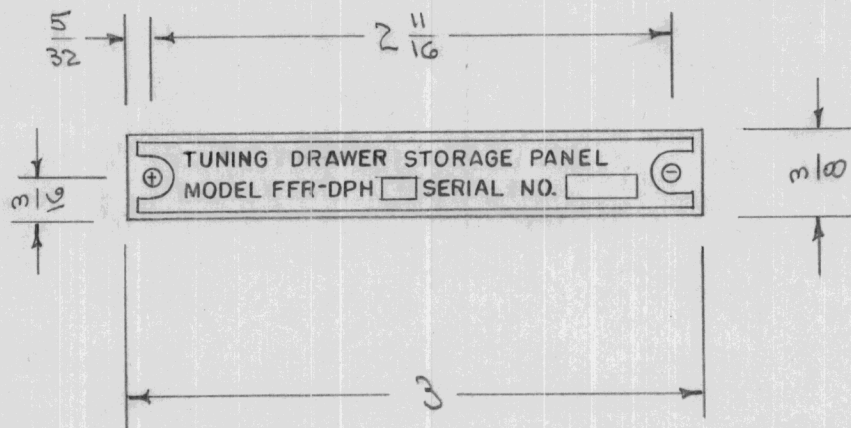


IF IT IS FOUND DESIRABLE TO CHANGE ANY TOLERANCE OR OTHER DETAIL SPECIFIED ON THIS DRAWING NOTIFY THE PURCHASER PROMPTLY.

NP-154

MAXIMUM ALLOWABLE TOLERANCES HAVE BEEN DETERMINED AND DEVIATIONS WILL BE CAUSE FOR REJECTION. REMOVE ALL BURRS AND SHARP EDGES

REQ PER UNIT	USED ON			
	MODEL	PROJECT NO.	ASS'Y. NO.	DATE
1	FFR-DPH	333	A-854	10-19-54



HOLES - 3/32 (.093) DIA.  
2 HOLES REQ.

REQ.	ITEM	PART NO.	DESCRIPTION	SYMBOL
		.032	THE TECHNICAL MATERIEL CORP. MAMARONECK, NEW YORK	
		STOCK SIZE		
		ALUMINUM	NAME PLATE	
		MATERIAL	FFR-DPH	
		250		
		TYPE & TEMPER	C.P.D. 10-19-54	
			DRAWN	ELEC. DES. APP. MECH. DES. APP.
		HEAT TREAT. SPEC.	checked	FINAL APPROVAL
		BLACK ETCHED BACKGND. AND CLEAR LACQUER		NP-154
		FINISH & SPEC. NO.		

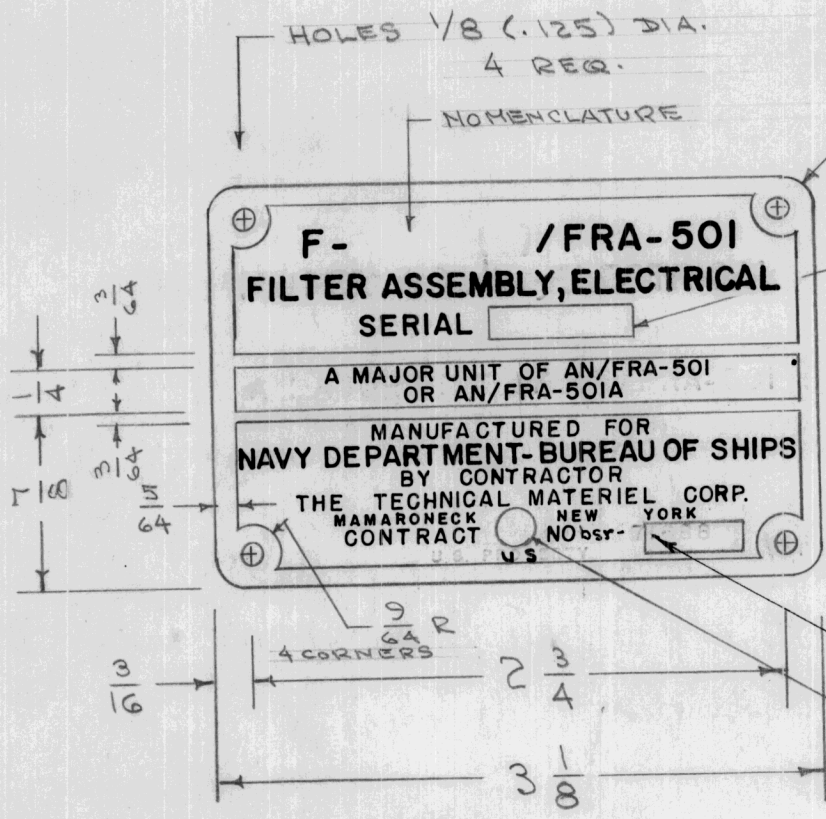
ISSUE	ITEM	CHANGED FROM	DATE	CN. NO.	DRAFTS	CHECKER	ENG. APP.

TOLERANCES		SCALE
ALL OTHERS:	DEC. DIM. ± FRAC. DIM. ± ANGULAR DIM. ±	DRILL, PUNCH, COMMERCIAL STOCK SIZES AND MANUFACTURERS TOLERANCES ARE NOT INCLUDED.





REQ. PER UNIT	USED ON			NP-163	G
	MODEL	ASS'Y. NO.	DATE		



TMC NO.	NOMENCLATURE INSERT	
	TMC MODEL	NOMENCLATURE
NP-163-1	RSF 2 (A)	5006
-2	RSF 2 (B)	5007
-3	RSF 2 (C)	5008
-4	RSF 2 (D)	5009
-5	RSF 2 (E)	5010

CONTRACT No.

SPACE FOR INSPECTORS STAMP

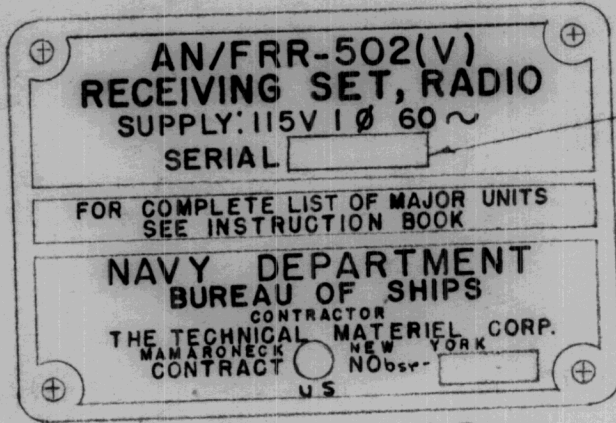
NOTE - FINISH REVERSE ETCH, ANODIZED, ON LUSTERLESS BLACK BACKGROUND

G	1	ADDED - OR AN/FRA-501A	10/7/58	7	MJT	COB	QBR
F	1	CONTRACT NO REMOVED	8/24/57	6	COB		
E	1	Contract # was 64820	2/15/57	5	W	W	AJJ
D	1	TMC DASH NOS. Added	10/23/56	4	W		W
C	1	US WAS US PROPERTY	9/18/56	3	COB	W	AJJ
B	1	CONTRACT NO CORRECTED	9/23/55	2	W	COB	W
A	1	GENERAL REVISION	8/1/55	1	COB	W	A.J.J.

NAMEPLATE TO BE MANUFACTURED IN ACCORDANCE WITH MIL-I-15024 (SHIPS) TYPE A 19 SEPTEMBER 1952

ISSUE	ITEM	CHANGED FROM	DATE	CH. NO.	DRAFTS	CHECKER	ENG. APP.	REQ. ITEM	PART NO.	DESCRIPTION	SYMBOL		
								.032		THE TECHNICAL MATERIEL CORP. MAMARONECK, NEW YORK NAMEPLATE F- /FRA-501 OR 501A			
								STOCK SIZE					
								ALUMINUM					
								MATERIAL					
								250	JAD 6-2955	COB	A.J.J.		
								TYPE & TEMPER	HEAT TREAT. SPEC.	DRAWN	CHECKED	FINAL APPROVAL	
								SEE NOTE				NP-163	G
								FINISH & SPEC. NO.		ELEC. DES. APP.	MECH. DES. APP.		

REC. PER UNIT	USED ON			NP-168	F
	MODEL	ASS'Y. NO.	DATE		

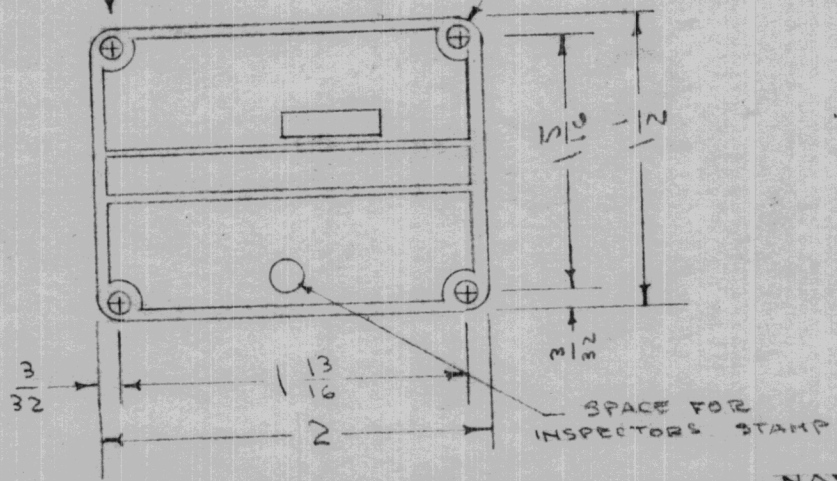


$\frac{3}{4} \times \frac{3}{16}$

NOTE - FINISH REVERSE ETCH, ANODIZED, ON LUSTERLESS ORANGE BACKGROUND

HOLES  $\frac{1}{8}$  (.125) Ø. 4 REQ  $\frac{1}{8}$  R. 4 CORNERS

ACTUAL SIZE



NAMEPLATE TO BE MANUFACTURED IN ACCORDANCE WITH MIL-I-15024 (SHIPS), TYPE A 19 SEPTEMBER 1952

ISSUE	ITEM	CHANGED FROM	DATE	CH. NO.	DRAFTS	CHECKER	ENG. APP.
F	1	CONTRACT NO. REMOVED	8/21/52	5	WJ	AJJ	
E	1	Contract # WAS 64820	2/15/57	5	WJ	AJJ	
D	1	US WAS US PROPERTY	9/11/56	4	WJ	AJJ	
C	1	CONTRACT NO CORRECTED	9/23/55	3	WJ	WJ	
B	1	(V) Added	8/11/55	2	WJ	AJJ	
A	1	GENERAL REVISION	8/5/55	1	WJ	AJJ	

REQ. ITEM	PART NO.	DESCRIPTION	SYMBOL
		THE TECHNICAL MATERIEL CORP. MAMARONECK. NEW YORK	
	.032	NAMEPLATE	
	ALUMINUM	AN/FRR-502V	
250		DRAWN	FINAL APPROVAL
SEE NOTE	HEAT TREAT. SPEC.	CHECKED	NP-168 F
FINISH & SPEC. NO.	ELEC. DES. APP.	MECH. DES. APP.	



REQ. PER UNIT	USED ON			NP-174	C
	MODEL	ASSY. NO.	DATE		

R-5007/FRR-502  
 RECEIVER SUBASSEMBLY  
 SUPPLY: 115 V 1Ø 60 ~ 80W  
 SERIAL

FOR GENERAL RADIO USE

MANUFACTURED FOR  
 NAVY DEPARTMENT - BUREAU OF SHIPS  
 BY CONTRACTOR  
 THE TECHNICAL MATERIEL CORP.  
 MAMARONECK NEW YORK  
 CONTRACT NO.  71688

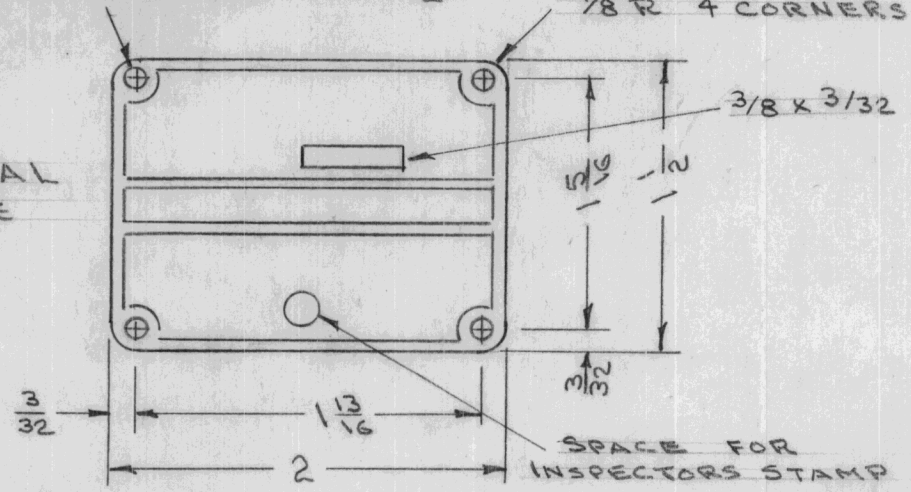
3/4 x 3/16

HOLES 1/8Ø 4 REQ.

1/8 R 4 CORNERS

3/8 x 3/32

ACTUAL SIZE



NOTE: FINISH REVERSE ETCH, ANODIZED, ON LUSTERLESS BLACK BACKGROUND.

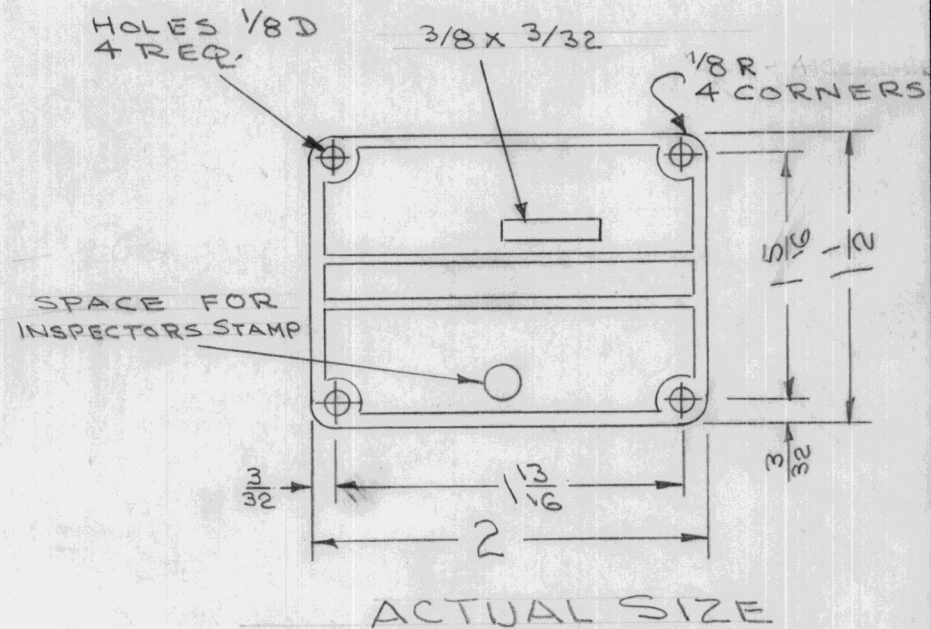
NAMEPLATE TO BE MANUFACTURED IN ACCORDANCE WITH MIL-I-15024 (SHIPS), TYPE A 19 SEPTEMBER 1952



ISSUE	ITEM	CHANGED FROM	DATE	CH. NO.	DRAFTS	CHECKER	ENG. APP.	REQ. ITEM	PART NO.	DESCRIPTION	SYMBOL		
C	1	CONTRACT # WAS 64820	2/15/57	3	16	JLR	A.J.J.		.032	THE TECHNICAL MATERIEL CORP. MAMARONECK, NEW YORK NAME PLATE R-5007/FRR-502			
B	1	US WAS US PROPERTY	9/18/56	2	000	JLR	A.J.J.		STOCK SIZE				
A	1	CONTRACT NO CORRECTED	9/23/55	1	JLR	000	W.C.		ALUMINUM				
TOLERANCES								MATERIAL					
DEC. DIM. ±			SCALE:					250					
FRAC. DIM. ±			MAXIMUM ALLOWABLE TOLERANCES HAVE BEEN DETERMINED AND ANY DEVIATIONS WILL BE CAUSE FOR REJECTION. REMOVE ALL BURRS AND SHARP EDGES					TYPE & TEMPER		DRAWN		CHECKED	FINAL APPROVAL
ANGULAR DIM. ±								HEAT TREAT. SPEC.					
								FINISH & SPEC. NO.		ELEC. DES. APP.		MECH. DES. APP.	

REQ. PER UNIT	USED ON			NP-177	B
	MODEL	ASS'Y. NO.	DATE		
1	PMO-2		5/23/56		

0-459/URT	
OSCILLATOR, RADIO FREQUENCY	
SUPPLY: 110 OR 220V 1Ø 60~	
SERIAL <span style="border: 1px solid black; display: inline-block; width: 50px; height: 15px;"></span>	
FOR GENERAL RADIO USE	
MANUFACTURED FOR	
NAVY DEPARTMENT-BUREAU OF SHIPS	
BY CONTRACTOR	
THE TECHNICAL MATERIEL CORPORATION	
MAMARONECK	NEW YORK
CONTRACT	NO 6sr-71842
US	



NOTE: FINISH  
REVERSE, ETCH, ANODIZED,  
ON LUSTERLESS ORANGE BACKGROUND  
3205, (SPEC. TT-C-595)

NAMEPLATE TO BE MANUFACTURED IN ACCORDANCE  
WITH MIL-I-15024 (SHIPS), TYPE A  
19 SEPTEMBER 1952

								REQ. ITEM	PART NO.	DESCRIPTION	SYMBOL
								.032	THE TECHNICAL MATERIEL CORP. MAMARONECK, NEW YORK		
								STOCK SIZE	NAME PLATE		
								ALUMINUM	0-459/URT		
								MATERIAL			
								250	<div style="display: flex; justify-content: space-between;"> <span><i>H.W.</i></span> <span><i>W.C.</i></span> <span><i>A.J.J.</i></span> </div>		
TOLERANCES								SCALE:	DRAWN	CHECKED	FINAL APPROVAL
DEC. DIM. ±								MAXIMUM ALLOWABLE TOLERANCES HAVE BEEN DETERMINED AND ANY DEVIATIONS WILL BE CAUSE FOR REJECTION.			
FRAC. DIM. ±								REMOVE ALL BURRS AND SHARP EDGES			
ANGULAR DIM. ±								SEE NOTE		<i>W.C.</i>	NP-177
								FINISH & SPEC. NO.	ELEC. DES. APP.	MECH. DES. APP.	B



REQ. PER UNIT	USED ON			NP-178
	MODEL	ASSY. NO.	DATE	
1	VOX		6/26/56	

**O-330 / FR**  
**OSCILLATOR, RADIO FREQUENCY**  
**SUPPLY: 110 OR 220V 1Ø 60~**  
 SERIAL

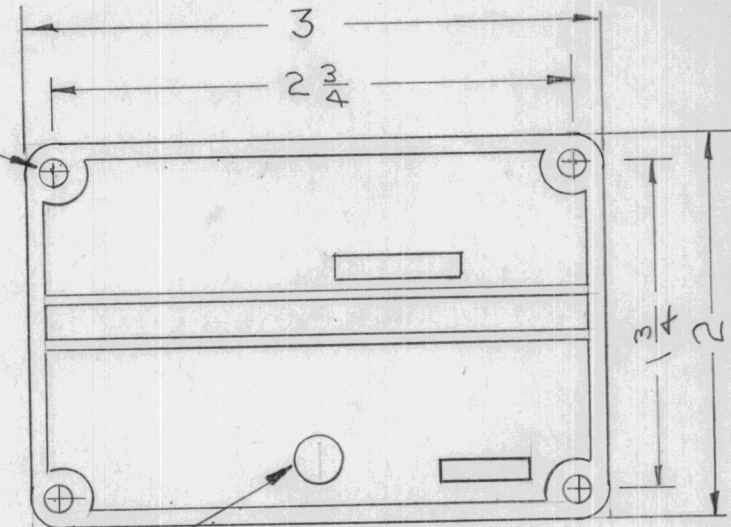
---

**FOR GENERAL RADIO USE**

---

MANUFACTURED FOR  
**NAVY DEPARTMENT-BUREAU OF SHIPS**  
 BY CONTRACTOR  
**THE TECHNICAL MATERIEL CORPORATION**  
 MAMARONECK NEW YORK  
 CONTRACT  NObsr   
 US

1/8" HOLES  
4 REQ.



SPACE FOR INSPECTOR'S STAMP

ACTUAL SIZE

NOTE: Finish  
 Reverse Etch, Anodized on lusterless Orange background 3205, (Spec. TT-C-595)

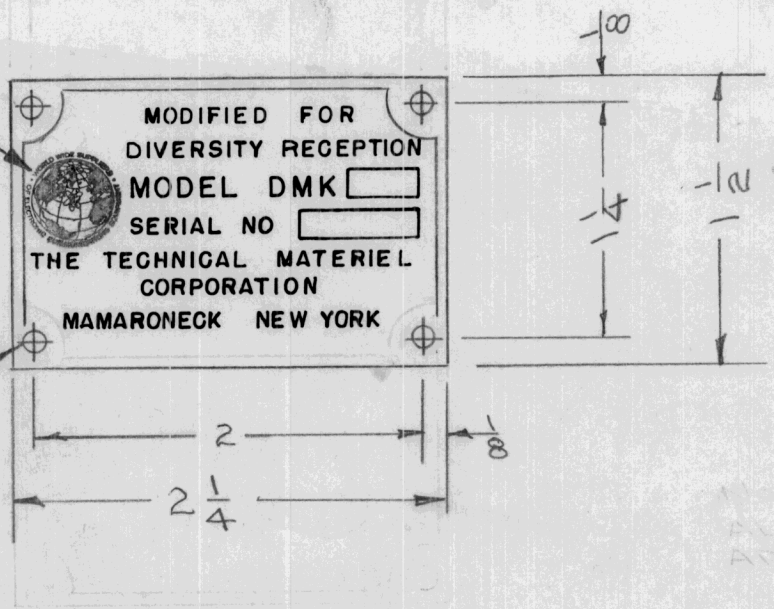
Name Plate to be manufactured in accordance with MIL-I-15024 (SHIPS), Type A 19 September 1952

							REQ. ITEM	PART NO.	DESCRIPTION	SYMBOL		
								.032	<b>THE TECHNICAL MATERIEL CORP.</b> MAMARONECK. NEW YORK NAME PLATE O-330/FR			
								STOCK SIZE				
								Aluminum				
								MATERIAL				
ISSUE	ITEM	CHANGED FROM	DATE	CH. NO.	DRAFTS	CHECKER	ENG. APP.	250	<i>[Signature]</i>	<i>[Signature]</i>		
TOLERANCES			SCALE:				TYPE & TEMPER	HEAT TREAT. SPEC.	DRAWN	CHECKED	FINAL APPROVAL	
DEC. DIM. ±			MAXIMUM ALLOWABLE TOLERANCES HAVE BEEN DETERMINED AND ANY DEVIATIONS WILL BE CAUSE FOR REJECTION. REMOVE ALL BURRS AND SHARP EDGES				See NOTE			<i>[Signature]</i>	NP-178	
FRAC. DIM. ±							FINISH & SPEC. NO.	ELEC. DES. APP.	MECH. DES. APP.			
ANGULAR DIM. ±												

REQ. PER UNIT	USED ON			NP-179	A
	MODEL	ASS'Y. NO.	DATE		
1	DMK-5		8-16-56		

TMC INSIGNIA  
(REF. NP-493)

1/8 (.125) D  
2 REQ.



ISSUE	ITEM	CHANGED FROM	DATE	CH. NO.	DRAFTS	CHECKER	ENG. APP.	REQ.	ITEM	PART NO.	DESCRIPTION	SYMBOL
										.032	THE TECHNICAL MATERIEL CORP. MAMARONECK, NEW YORK	
										STOCK SIZE	NAME PLATE	
A	1	NEW TMC INSIGNIA ADDED	8/1/62	7046	MJT	<i>[Signature]</i>	<i>[Signature]</i>			ALUMINUM	(NP-121 MODIFIED)	
										MATERIAL		
										250	<i>[Signature]</i>	<i>[Signature]</i>
										TYPE & TEMPER	DRAWN	CHECKED
										HEAT TREAT. SPEC.		
										Black Matte Background Clear Lacquer		
										FINISH & SPEC. NO.	ELEC. DES. APP.	MECH. DES. APP.
												NP-179
												A





OSCILLATOR, RADIO FREQUENCY	
O-459/URT	
USAF S/N 1760-048 229 106	
SERIAL NO	<input type="text"/>
MODEL	PM0-2
CONTRACT	AF30(635) <input type="text"/>
THE TECHNICAL MATERIEL CORPORATION	
MAMARONECK	NEW YORK
<input type="text"/>	U.S.

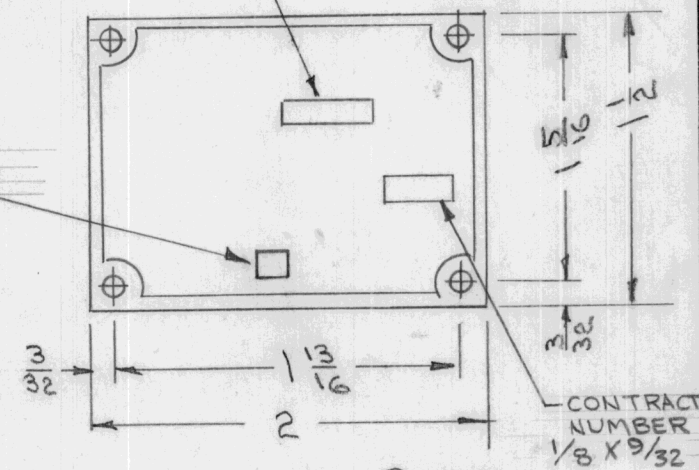
REQ. PER UNIT	USED ON		
	MODEL	ASS'Y. NO.	DATE
1			

NP-181 A

HOLES 1/8 D  
4 REQ.

3/8 x 3/32

SPACE FOR INSPECTOR'S STAMP  
3/32 x 3/32



CONTRACT NUMBER  
1/8 X 9/32

ACTUAL SIZE

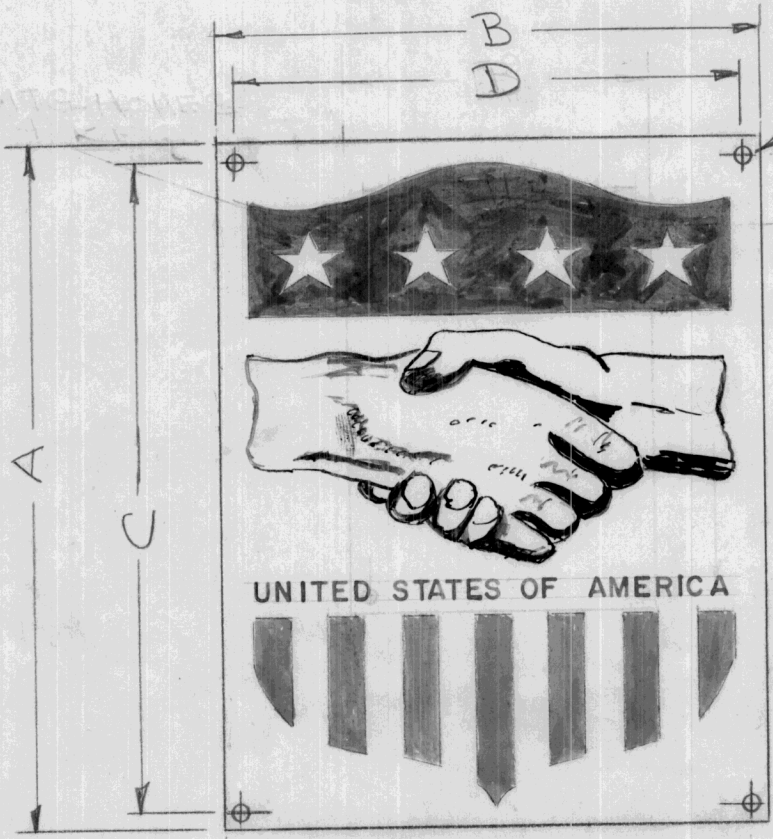
NOTE  
BLACK MATTE BACKGROUND  
& CLEAR LACQUER

ISSUE	ITEM	CHANGED FROM	DATE	CH. NO.	DRAFTS	CHECKER	ENG. APP.	REQ. ITEM	PART NO.	DESCRIPTION	SYMBOL				
									.032	THE TECHNICAL MATERIEL CORP. MAMARONECK, NEW YORK	PLATE, IDENTIFICATION				
									STOCK SIZE						
A	2	CONTRACT NO. BLOCK ADDED	1/3/57	1	16	JHR	ATT.		ALUMINUM						
	1	USAF S/N REPLACED FSN							MATERIAL						
TOLERANCES								250		DRAWN: <i>JHR</i> 10/24/56 CHECKED: <i>JHR</i>	FINAL APPROVAL: <i>A.S.S.</i>				
DEC. DIM. ±			SCALE: MAXIMUM ALLOWABLE TOLERANCES HAVE BEEN DETERMINED AND ANY DEVIATIONS WILL BE CAUSE FOR REJECTION. REMOVE ALL BURRS AND SHARP EDGES					TYPE & TEMPER		HEAT TREAT. SPEC.		ELEC. DES. APP.		MECH. DES. APP.	
FRAC. DIM. ±								SEE NOTE							
ANGULAR DIM. ±															



TMC No	UNZ No.	A	B	C	D	MTG. HOLES
NP-182-1	520	2	1 9/16	1 13/16	1 3/8	1/16 D
-2	522	3 9/16	2 13/16	3 3/8	2 5/8	1/16 D

REQ. PER UNIT	USED ON			NP-182	A
	MODEL	ASS'Y. NO.	DATE		



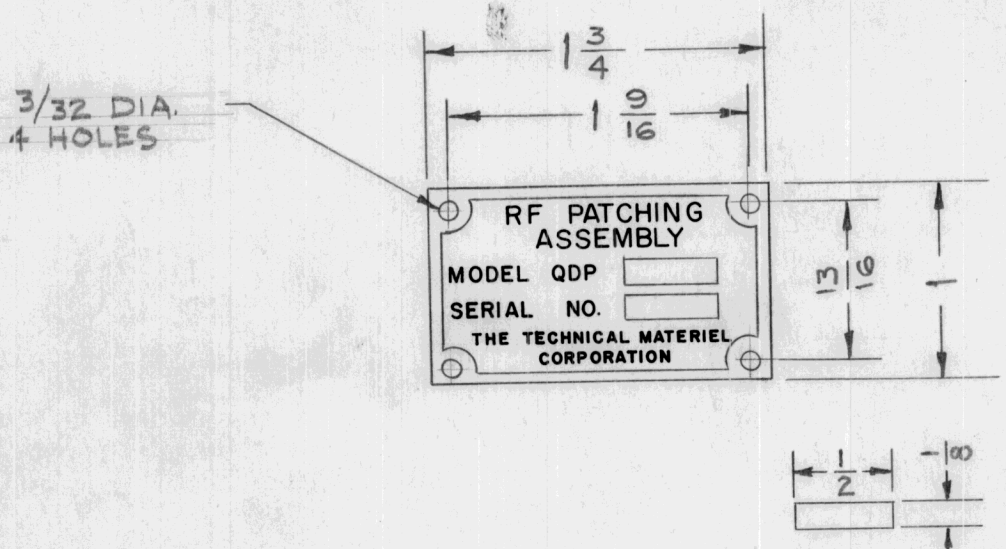
MTG. HOLES  
4 REQ.

NOTE  
THIS NAMEPLATE TO BE USED  
ONLY WHEN SPECIFICALLY  
REQUESTED ON PRODUCTION  
JOB ORDERS.

REF: UNZ & CO

ISSUE	ITEM	CHANGED FROM	DATE	CH. NO.	DRAFTS	CHECKER	ENG. APP.	REQ. ITEM	PART NO.	DESCRIPTION	SYMBOL		
										JUN 25 1957			
										THE TECHNICAL MATERIEL CORP. MAMARONECK, NEW YORK			
										NAMEPLATE, FOA			
A	1	CHART ADDED	6/17/57	1	JAS		A.J.J.						
TOLERANCES								SCALE:					
DEC. DIM. ± FRAC. DIM. ± ANGULAR DIM. ±								MAXIMUM ALLOWABLE TOLERANCES HAVE BEEN DETERMINED AND ANY DEVIATIONS WILL BE CAUSE FOR REJECTION. REMOVE ALL BURRS AND SHARP EDGES					
								TYPE & TEMPER	HEAT TREAT. SPEC.	DRAWN	CHECKED	FINAL APPROVAL	
								FINISH & SPEC. NO.	ELEC. DES. APP.	MECH. DES. APP.	NP-182	A	

REQ. PER UNIT	USED ON			NP-183	A
	MODEL	ASS'Y. NO.	DATE		
1	QDP 38	A-1452	7-23-57		
1	QDP-48	A-1452			



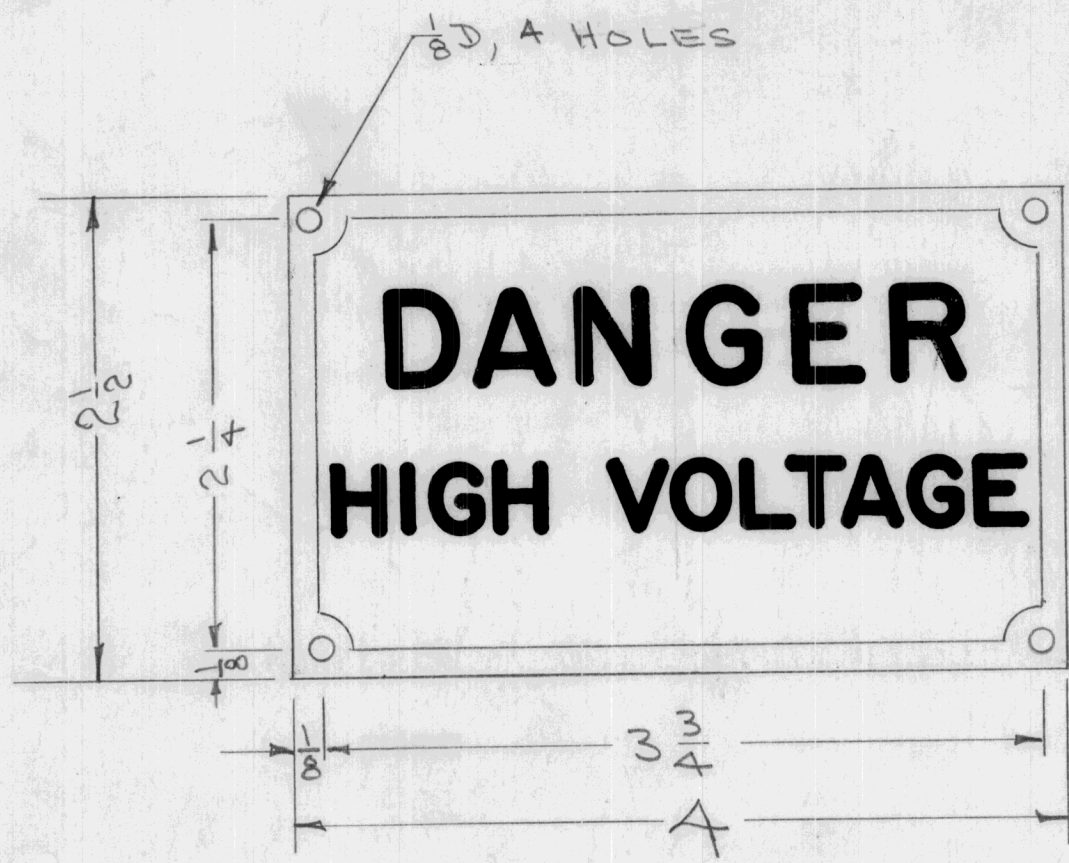
NOTE:  
ALL LETTERING APPROX.  
TO SIZE.

FINISH:  
BLACK MATTE BACKGROUND  
& CLEAR LACQUER.

ISSUE	ITEM	CHANGED FROM	DATE	CH. NO.	DRAFTS	CHECKER	ENG. APP.	REQ. ITEM	PART NO.	DESCRIPTION	SYMBOL			
									.032	THE TECHNICAL MATERIEL CORP. MAMARONECK. NEW YORK				
									STOCK SIZE		NAME PLATE			
									ALUMINUM		MODEL QDP 38			
A	1	Redrawn, Black Border Deleted	7-23-57	1	sc.	J. Wade	[Signature]		250	7-23-57	[Signature]			
TOLERANCES			SCALE:					TYPE & TEMPER		HEAT TREAT. SPEC.	DRAWN	CHECKED	FINAL APPROVAL	
DEC. DIM. ± FRAC DIM. ± ANGULAR DIM. ±			MAXIMUM ALLOWABLE TOLERANCES HAVE BEEN DETERMINED AND ANY DEVIATIONS WILL BE CAUSE FOR REJECTION. REMOVE ALL BURRS AND SHARP EDGES					SEE NOTE		FINISH & SPEC. NO.	ELEC. DES. APP.	MECH. DES. APP.	NR-183	A



REQ. PER UNIT	USED ON			NP-195
	MODEL	ASS'Y. NO.	DATE	
1	TER-5000	A-1431(8)	4-4-57	



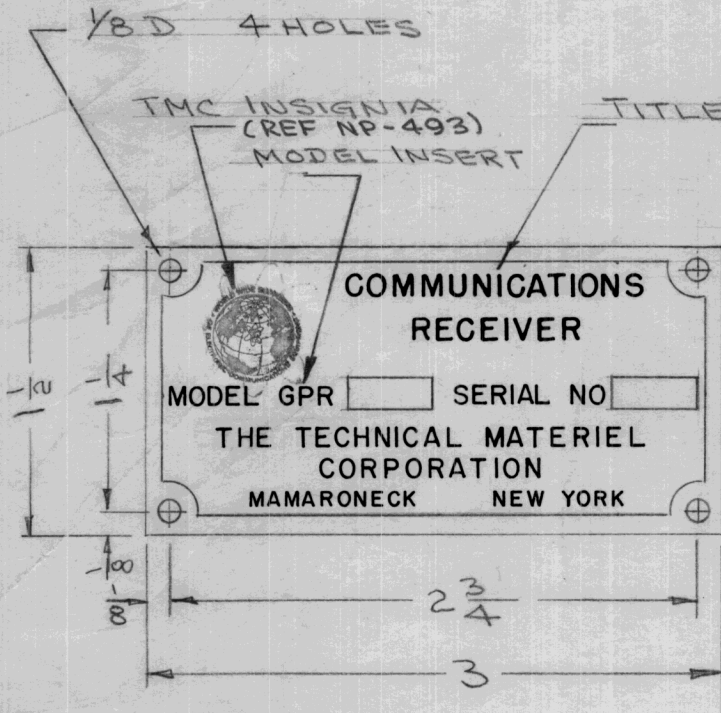
NOTE: FINISH  
LUSTERLESS RED MATTE  
BACKGROUND, CLEAR  
LACQUER.  
LETTERING APPROX. TO SCALE

ISSUE	ITEM	CHANGED FROM	DATE	CH. NO.	DRAFTS	CHECKER	ENG. APP.	REQ. ITEM	PART NO.	DESCRIPTION	SYMBOL
								.032		THE TECHNICAL MATERIEL CORP. MAMARONECK. NEW YORK	
								STOCK SIZE			
								ALUMINUM		NAME PLATE	
								MATERIAL		DANGER, HIGH VOLTAGE	
								250		DRAWN: <i>ARB</i> 4/4/57 CHECKED: <i>ARB</i> FINAL APPROVAL: <i>A.J.J.</i>	
								TYPE & TEMPER	HEAT TREAT. SPEC.		
								SEE NOTE			
								FINISH & SPEC. NO.		ELEC. DES. APP.	MECH. DES. APP.
											NP-195

DEC. DIM. ±  
FRAC. DIM. ± Y64  
ANGULAR DIM. ±

SCALE:  
MAXIMUM ALLOWABLE TOLERANCES HAVE BEEN DETERMINED AND ANY DEVIATIONS WILL BE CAUSE FOR REJECTION.  
REMOVE ALL BURRS AND SHARP EDGES

REQ. PER UNIT	USED ON			NP-196	G
	MODEL	ASS'Y. NO.	DATE		



OBsolete EQUIPMENT

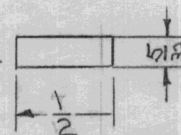
Used on SBE-1

Used on SBE-2

TMC No.	TITLE INSERT	MODEL INSERT
NP-196-1	COMMUNICATIONS RECEIVER	GPR
NP-196-2	TRANSMITTING MODE SELECTOR	SBE
NP-196-3	EXCITER UNIT	A-1396
NP-196-4	EXCITER UNIT	A-1516
NP-196-5	EXCITER UNIT	AO-101
NP-196-6	DISTRIBUTIVE AMPLIFIER	DA-101
NP-196-7	LOW FREQUENCY MULTI. COUPLER	LMC-10
NP-196-8	FREQUENCY AMPLIFIER	CHG

NOTE  
ALL LETTERING APPROX.  
TO SCALE.

APPROX. BLOCK SIZE



G	1	NP-196-3, EQUIP. OBSOLETE	11-9-62	7614	GH	JHE	
F	1	NEW TMC INSIGNIA ADDED	8/7/62	7046	MJT	JHE	
E	1	NP-196-6 Title Was Distributed Ampl.	6-20-61	5103	W.A.F.	JCS	
D	1	NP-196-8 Added	12/16/60	3747	RU	JCS	
C	2	NP-196-7 ADDED	9-22-60	X	CS	JHE	
	1	NP-196-6 ADDED					
B	1	NP-196-5 Added	10/12/59			JHE	
A	1	NP-196-4 Added for SBE-2	4/14/58	1	16	JHE	
ISSUE	ITEM	CHANGED FROM	DATE	CH. NO.	DRAFTS	CHECKER	ENG. APP.

REQ. ITEM	PART NO.	DESCRIPTION	SYMBOL
	.032	THE TECHNICAL MATERIEL CORP. MAMARONECK. NEW YORK	
	STOCK SIZE		
	ALUMINUM	NAME PLATE, IDENTIFICATION	
	MATERIAL		
	250	JHE 5/3/57	A. J. J.
	TYPE & TEMPER	DRAWN	CHECKED
	HEAT TREAT. SPEC.		
	BLACK MATTE BACKGROUND & CLEAR LACQUER		
	FINISH & SPEC. NO.	ELEC. DES. APP.	MECH. DES. APP.
			NP-196 G

TOLERANCES

SCALE: FULL

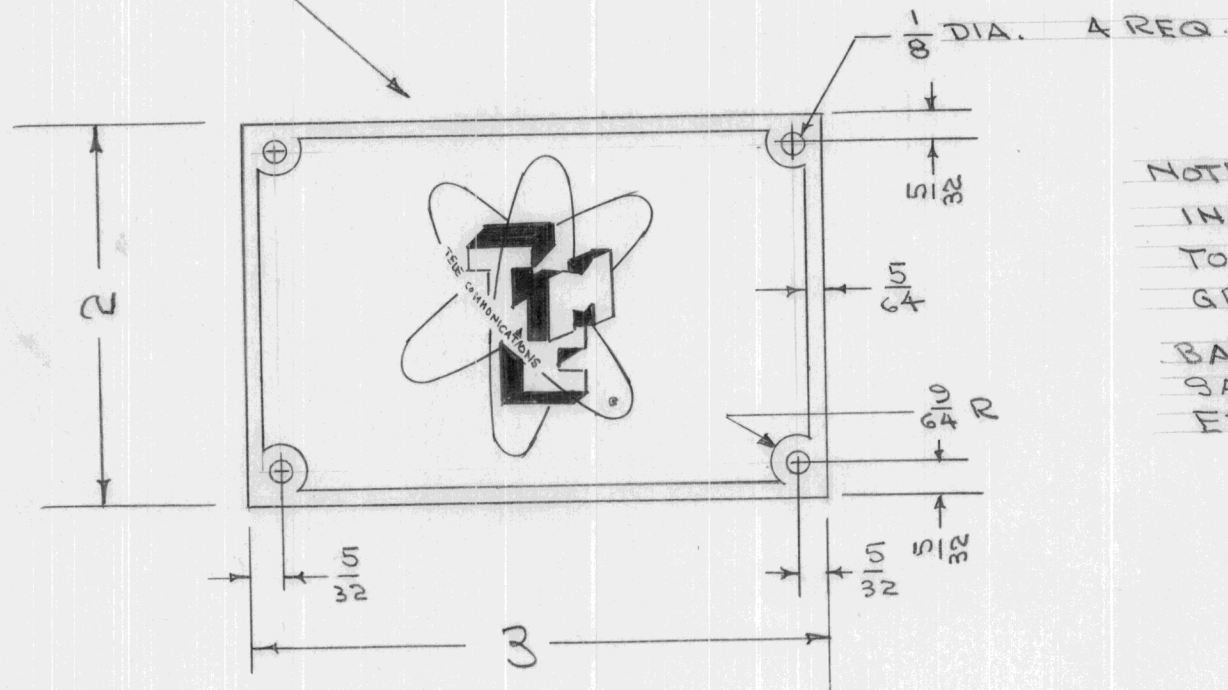
DEC. DIM. ±  
FRAC. DIM. ± 1/64  
ANGULAR DIM. ±

MAXIMUM ALLOWABLE TOLERANCES HAVE BEEN DETERMINED AND ANY DEVIATIONS WILL BE CAUSE FOR REJECTION.  
REMOVE ALL BURRS AND SHARP EDGES



REQ. PER UNIT	USED ON			NP-197
	MODEL	ASS'Y. NO.	DATE	
1	A-1421		6/3/57	

INSIGNIA TO BE CENTERED ON PLATE  
REF: NP-117



NOTE:  
INSIGNIA & BORDER  
TO BE S-220 BLUE-  
GRAY. ETCHED  
BACKGROUND TO BE  
SATIN ALUMINUM.  
ETCHED.

							REQ. ITEM	PART NO.	DESCRIPTION	SYMBOL	
							.032		THE TECHNICAL MATERIEL CORP. MAMARONECK. NEW YORK		
							STOCK SIZE				
							ALUMINUM		NAME PLATE, RACK		
							MATERIAL		A-1421		
ISSUE	ITEM	CHANGED FROM	DATE	CH. NO.	DRAFTS	CHECKER	ENG. APP.	250	SDD	A.S.J.	
TOLERANCES			SCALE:				TYPE & TEMPER	HEAT TREAT. SPEC.	DRAWN	CHECKED	FINAL APPROVAL
DEC. DIM. ±			MAXIMUM ALLOWABLE TOLERANCES HAVE BEEN DETERMINED AND ANY DEVIATIONS WILL BE CAUSE FOR REJECTION. REMOVE ALL BURRS AND SHARP EDGES				SEE NOTE				
FRAC. DIM. ±											FINISH & SPEC. NO.
ANGULAR DIM. ±											