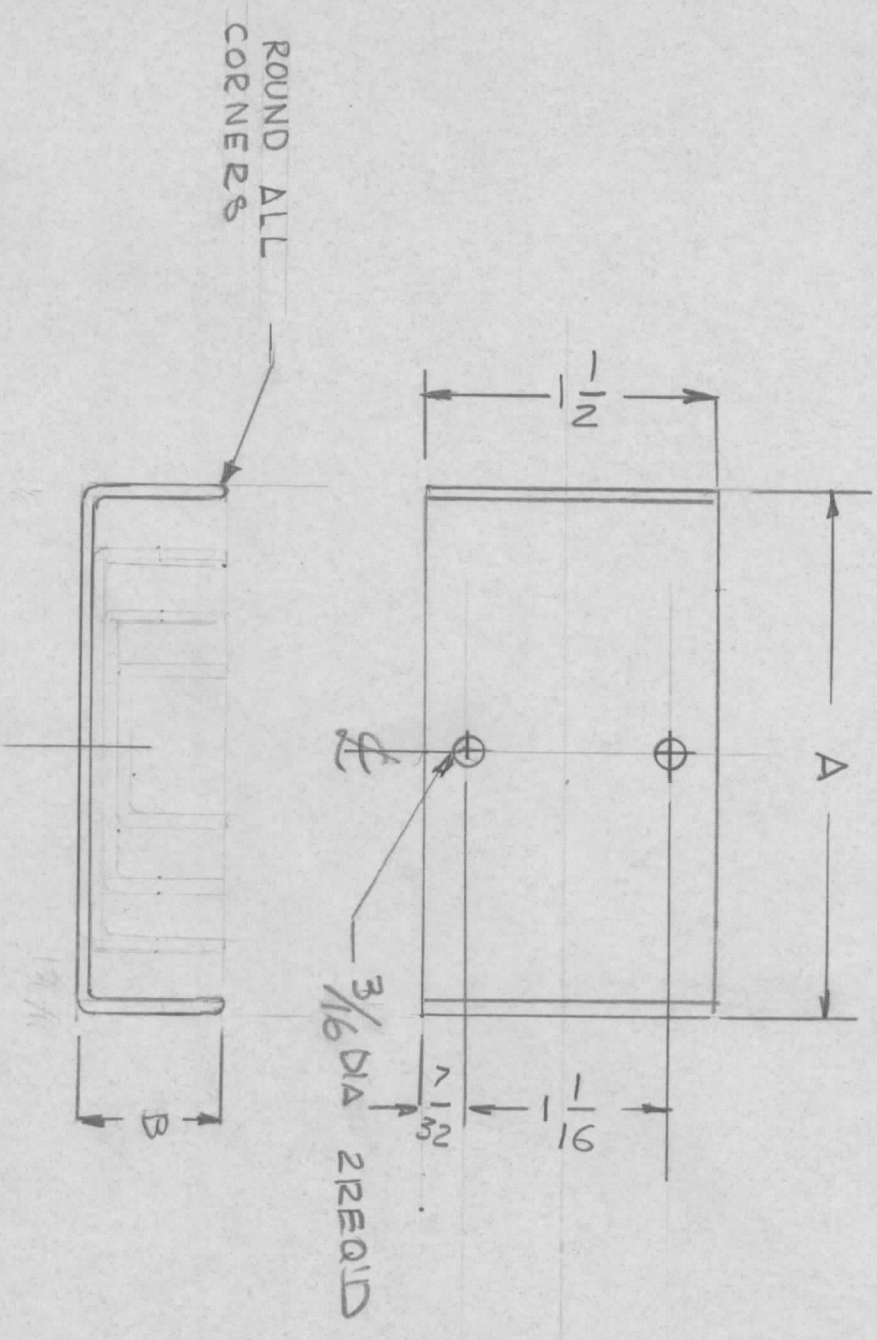


REVISIONS							
E.M.N. NO.	DRAFT	CHKD	ZONE	LTR	DESCRIPTION	DATE	APPROVED



TMC P/NO	A	B	QTY
MS -	2 3/4	11/16	1
MS -1	2 1/8	5/8	1
MS -2	1 1/2	9/16	1
MS -3	7/8	1/2	1

2 SETS

MMX-4

MODEL USED ON

ASS'Y NO.

APPLICATION

CODE

NOTICE TO PERSONS RECEIVING THIS DRAWING

THE TECHNICAL MATERIEL CORPORATION claims proprietary right in the material disclosed hereon. This drawing is issued in confidence for engineering information only and may not be reproduced or used to manufacture anything shown hereon without permission from THE TECHNICAL MATERIEL CORPORATION to the user. This drawing is loaned for mutual assistance and is subject to recall at any time.

REQ'D ITEM	PART NUMBER	DESCRIPTION	SYM.
		LIST OF MATERIAL	

UNLESS OTHERWISE SPECIFIED DIMENSIONS ARE IN INCHES AND INCLUDE CHEMICALLY APPLIED OR PLATED FINISHES	FINAL APPROVAL	DATE
MECH. DES.		
ELECT. DES.		
CHECKED		
DRAWN	G.P.L.	9-18-85

DECIMALS

.X ± .05

.XX ± .01

.XXX ± .005

FRACTIONS

1/64

ANGLES

0° - 30'

MATERIAL

ALUM 5052-H32

FINISH

S 120

BLACK ANODIZE

THE TECHNICAL MATERIEL CORP.

MAMARONECK, NEW YORK

HEAT SINK

SIZE

B

CODE IDENT. NO.

82679

DWG NO.

MS 7181

SCALE

1:1

SHEET

1

OF

ISSUE