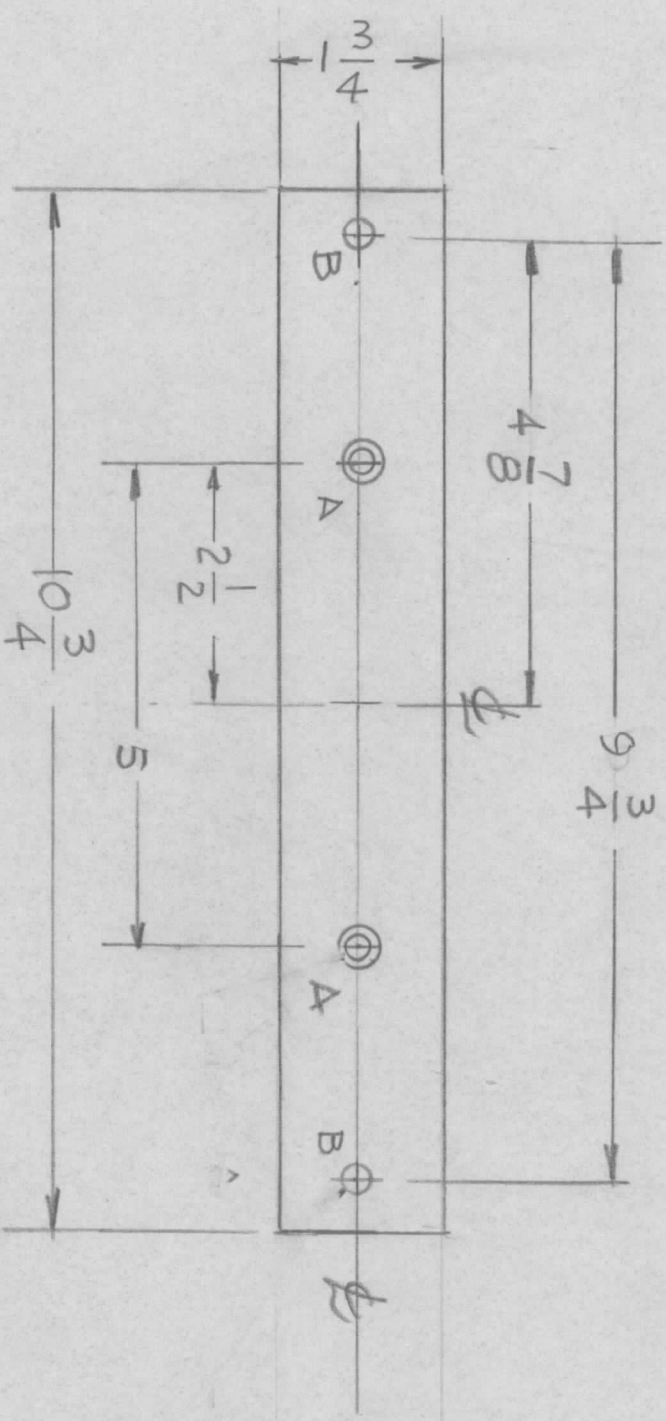


REVISIONS							
E.M.N. NO.	DRAFT	CHKD	ZONE	LTR	DESCRIPTION	DATE	APPROVED
					ORIGINAL RELEASE	7-7-80	



HOLES:
 A - .169 DIA C/SHK 82° TO .337 DIA 2 REQ
 B - 9/32 DIA 2 REQ

REQ'D	ITEM	PART NUMBER	DESCRIPTION	SYM.
			LIST OF MATERIAL	
<p align="center">THE TECHNICAL MATERIEL CORP. MAMARONECK, NEW YORK</p>				
<p align="center">MTG. BRACKET CASE</p>				
FINAL APPROVAL		DATE	DATE	DATE
<i>[Signature]</i>				
MECH. DES.		DATE	DATE	DATE
ELECT. DES.		DATE	DATE	DATE
CHECKED		DATE	DATE	DATE
DRAWN		DATE	DATE	DATE
<i>G.D.L.</i>				
SIZE	CODE IDENT. NO.	DWG NO.	ISSUE	
B	82679	MS 7024	Ø	
SCALE	1/2	SHEET	OF	

QTY / UNIT	MODEL USED ON	ASS'Y NO.
1	ATU-350A	
APPLICATION		
CODE		

NOTICE TO PERSONS RECEIVING THIS DRAWING
 THE TECHNICAL MATERIEL CORPORATION claims proprietary right in the material disclosed hereon. This drawing is issued in confidence for engineering information only and may not be reproduced or used to manufacture anything shown hereon without permission from THE TECHNICAL MATERIEL CORPORATION to the user. This drawing is loaned for mutual assistance and is subject to recall at any time.