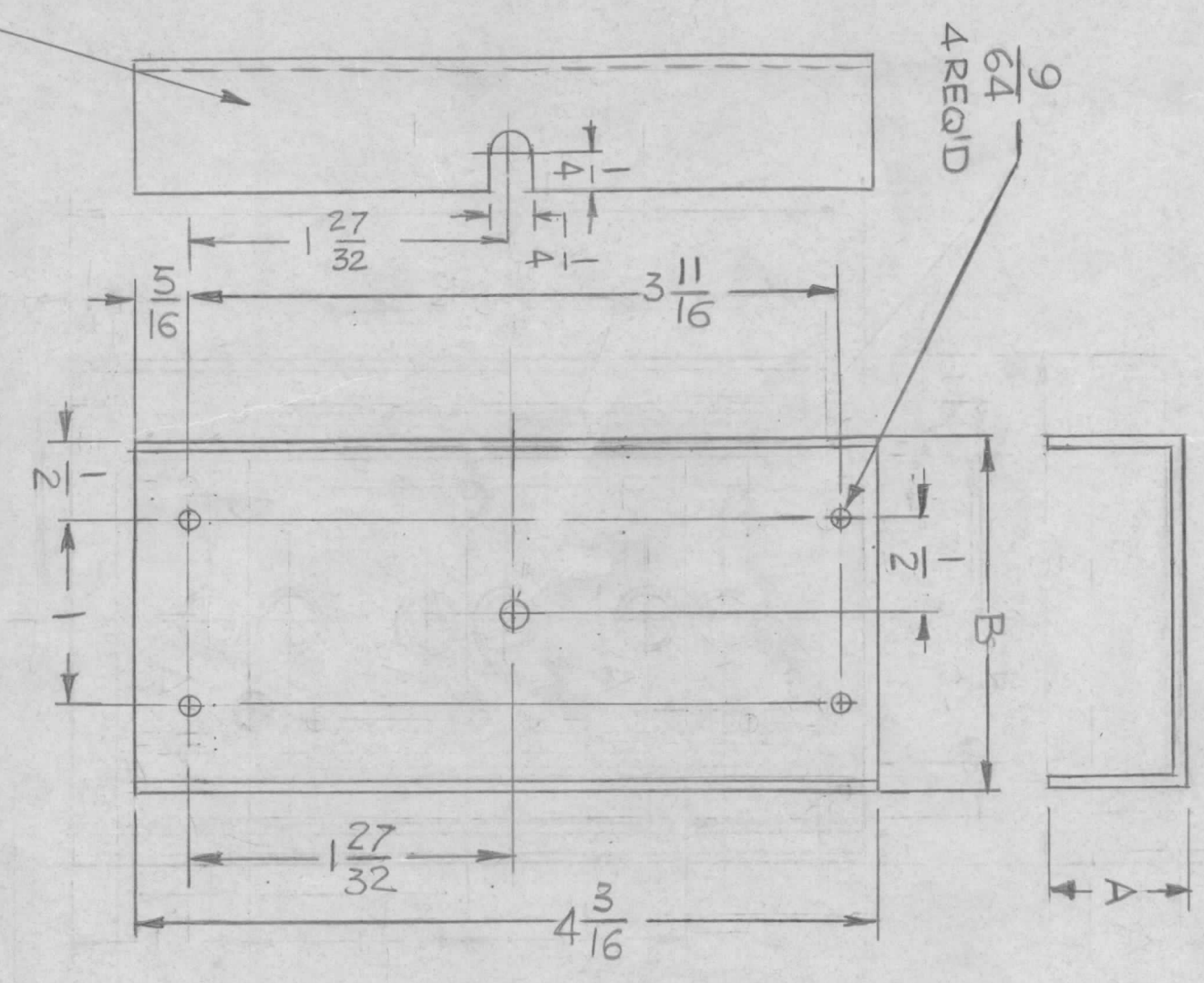


| REVISIONS | | DATE | APPROVED |
|------------|-------|-------------|----------|
| EMN NO. | DRAFT | CHKD | ZONE |
| LTR | | DESCRIPTION | |
| X1 REDRAWN | | | |



| TMC P/NO | DIMENSION | | REQ'D |
|----------|-----------|-------|-------|
| | A | B | |
| MS 7006- | 3/4 | 2 | 1 |
| MS 700-2 | 11/16 | 1 1/2 | 1 |

UNLESS OTHERWISE SPECIFIED:

1. USE MATERIAL THICKNESS FOR MAXIMUM RADIUS ON ALL BENDS.
2. ALL ANGULAR BENDS 90 DEGREES.
3. REMOVE ALL BURRS AND SHARP EDGES.
4. MOUNT INSERTS AFTER FINISHING.

QTY / UNIT

MODEL USED ON **MEO**

ASS'Y NO.

APPLICATION

CODE

NOTICE TO PERSONS RECEIVING THIS DRAWING
 THE TECHNICAL MATERIEL CORPORATION claims proprietary right in the material disclosed hereon. This drawing is issued in confidence for engineering information only and may not be reproduced or used to manufacture anything shown hereon without permission from THE TECHNICAL MATERIEL CORPORATION to the user. This drawing is loaned for mutual assistance and is subject to recall at any time.

| DECIMALS | TOLS. | FRACTIONS | ANGLES |
|-------------|-------|-----------|---------|
| .X ± .05 | | 1/64 | |
| .XX ± .01 | | | 0° .30' |
| .XXX ± .005 | | | |

MATERIAL .063THK
 ALUM 5052-H32
 FINISH S104
 YEL. IRIDITE

| REQ'D | ITEM | PART NUMBER | DESCRIPTION | SYM. |
|-------|------|-------------|-------------|------|
| | | | | |

LIST OF MATERIAL

THE TECHNICAL MATERIEL CORP.
 MAMARONECK, NEW YORK

PLATE MTG. HEAT SINK
 RF OUTPUT

SIZE B

CODE IDENT. NO. 82679

DWG NO. MS 7006

SCALE

SHEET 1 OF 1

ISSUE X1