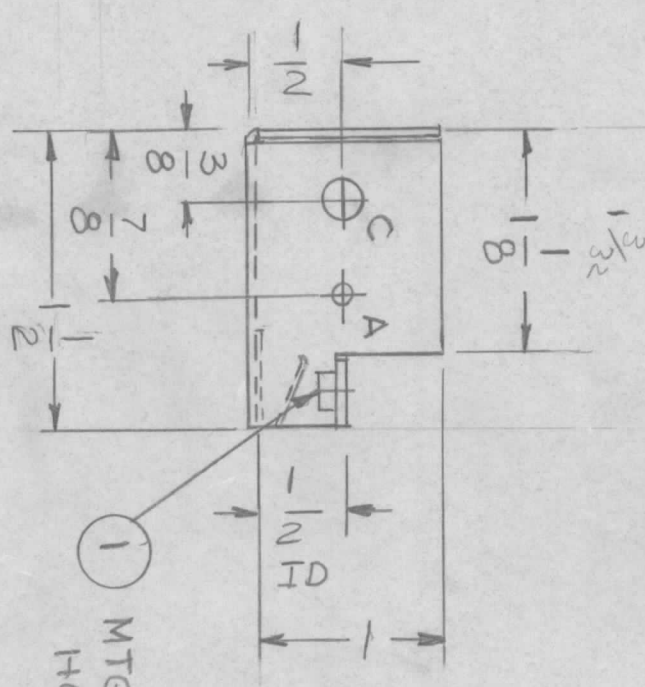
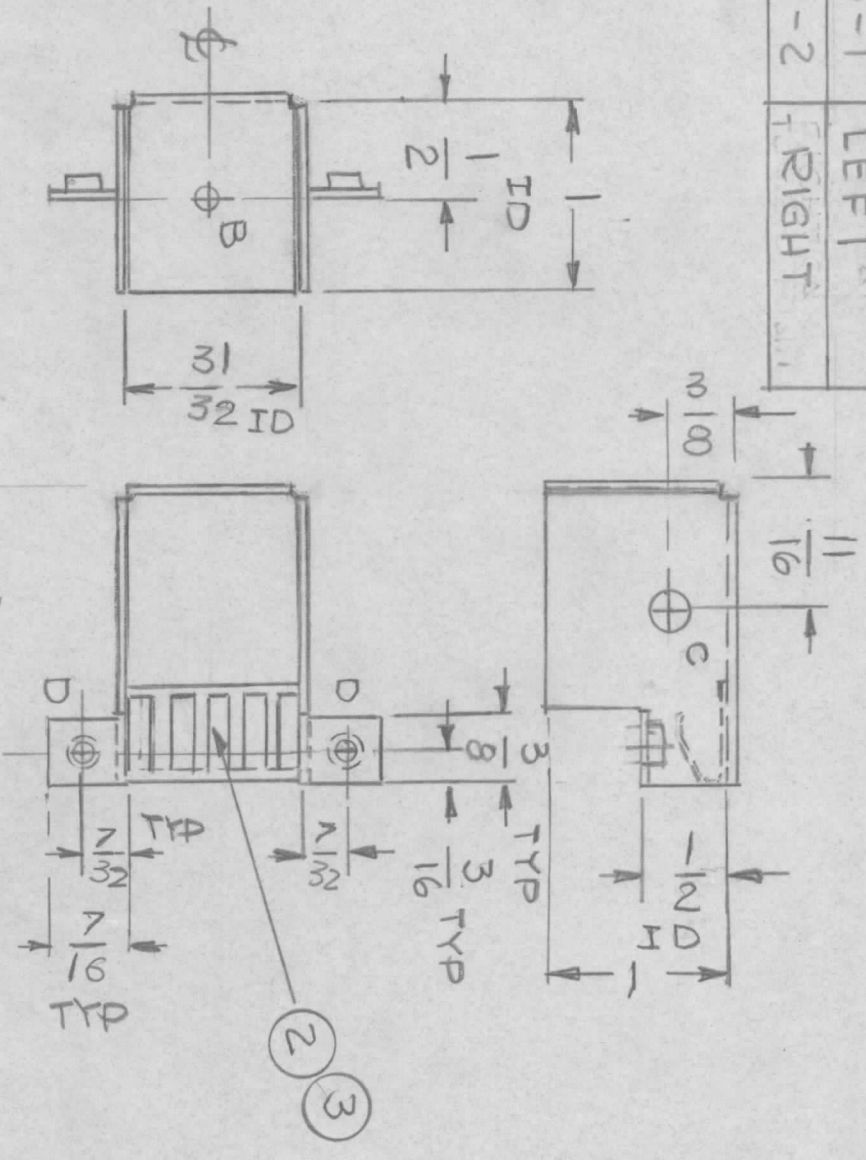


REVISIONS				
EMN NO.	DRAFT	CHKD	ZONE	LTR
#	MAC			
ORIGINAL RELEASE FOR PRODUCTION			DATE	APPROVED
			11-6-79	DB

TMC P/NO	DESCRIPTION
MS6960-1	LEFT
MS6960-2	RIGHT



HOLE S
A - 3/32 DIA 1REQ
B - 1/8 DIA 2REQ
C - 17/64 DIA 2REQ
D - .161 - .164 DIA 2REQ

LIST OF MATERIAL

REQ'D	ITEM	PART NUMBER	DESCRIPTION	SYM.
X	3	BS-100	SOLDER SOFT	
1	2	FP-199-6	CONTACT, ELECTRICAL	
2	1	NT129 0440-7	NUT, POUND	

THE TECHNICAL MATERIEL CORP.
MAMARONECK, NEW YORK

COUPLER COMPONENT
MTG.

SCALE B

SIZE CODE IDENT. NO. 82679

DWG NO. MS 6960

SHEET OF

ISSUE

NOTES:
LEFT CAN SHOWN
RIGHT CAN TO BE OPPOSITE

QTY / UNIT	MODEL USED ON	ASS'Y NO.
2	CU-2B	A 5774

APPLICATION

CODE

FINISH
TIN PLATED

MATERIAL .040 THK
COPPER

DECIMALS FRACTIONS
X ± .05 1/64
.XX ± .01 .01
.XXX ± .005 0° .30'

UNLESS OTHERWISE SPECIFIED
DIMENSIONS ARE IN INCHES
AND INCLUDE CHEMICALLY APPLIED
OR PLATED FINISHES

MECH. DES. DATE 11-8-79

ELECT. DES. DATE

CHECKED DATE

DRAWN DATE

FINAL APPROVAL

DATE 11-8-79

DATE

DATE

DATE

NOTICE TO PERSONS RECEIVING THIS DRAWING
THE TECHNICAL MATERIEL CORPORATION claims proprietary right in the material disclosed hereon. This drawing is issued in confidence and may not be reproduced or used to manufacture similar material without the written permission of THE TECHNICAL MATERIEL CORPORATION. This drawing is loaned for mutual assistance and is subject to return.