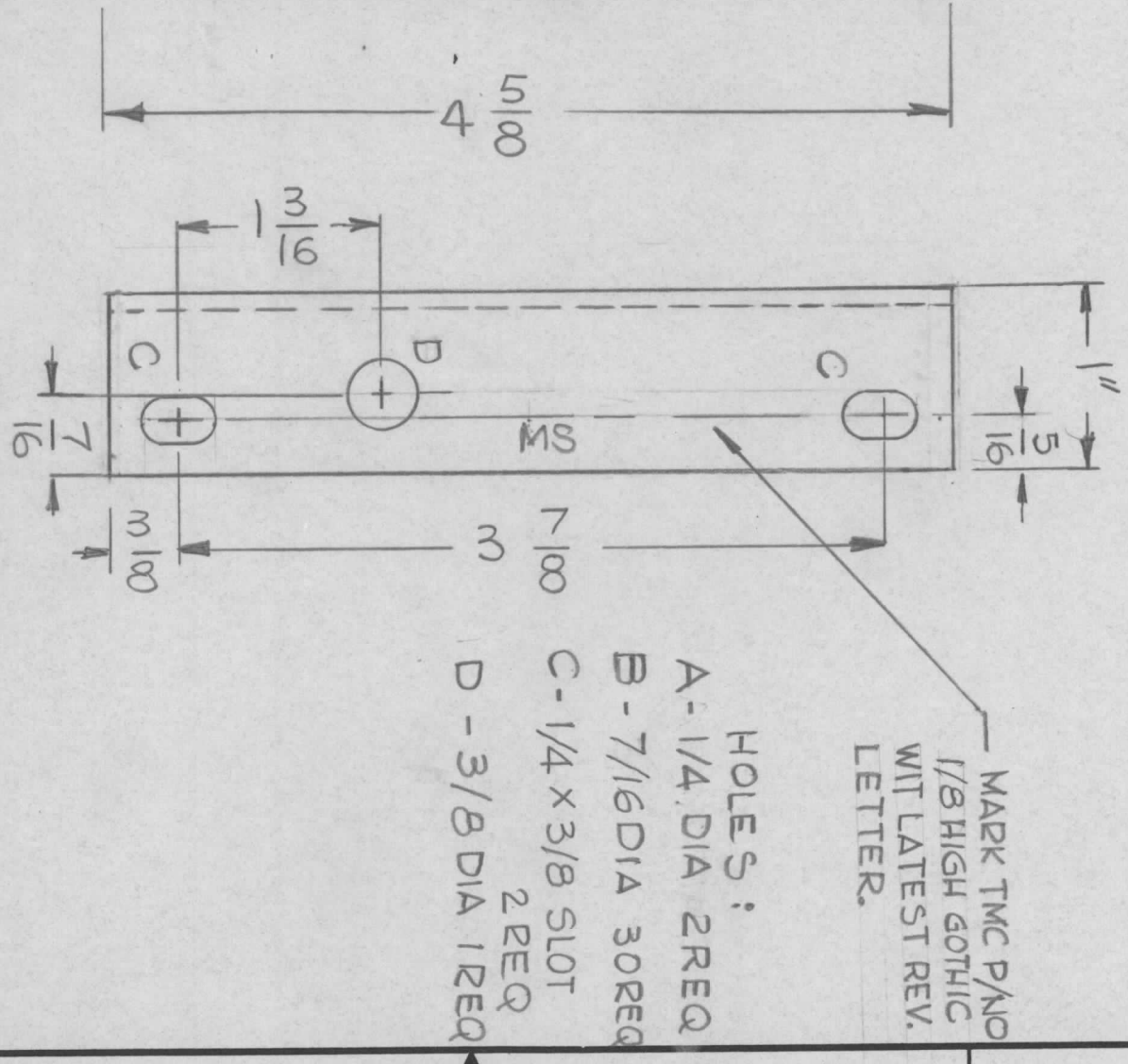
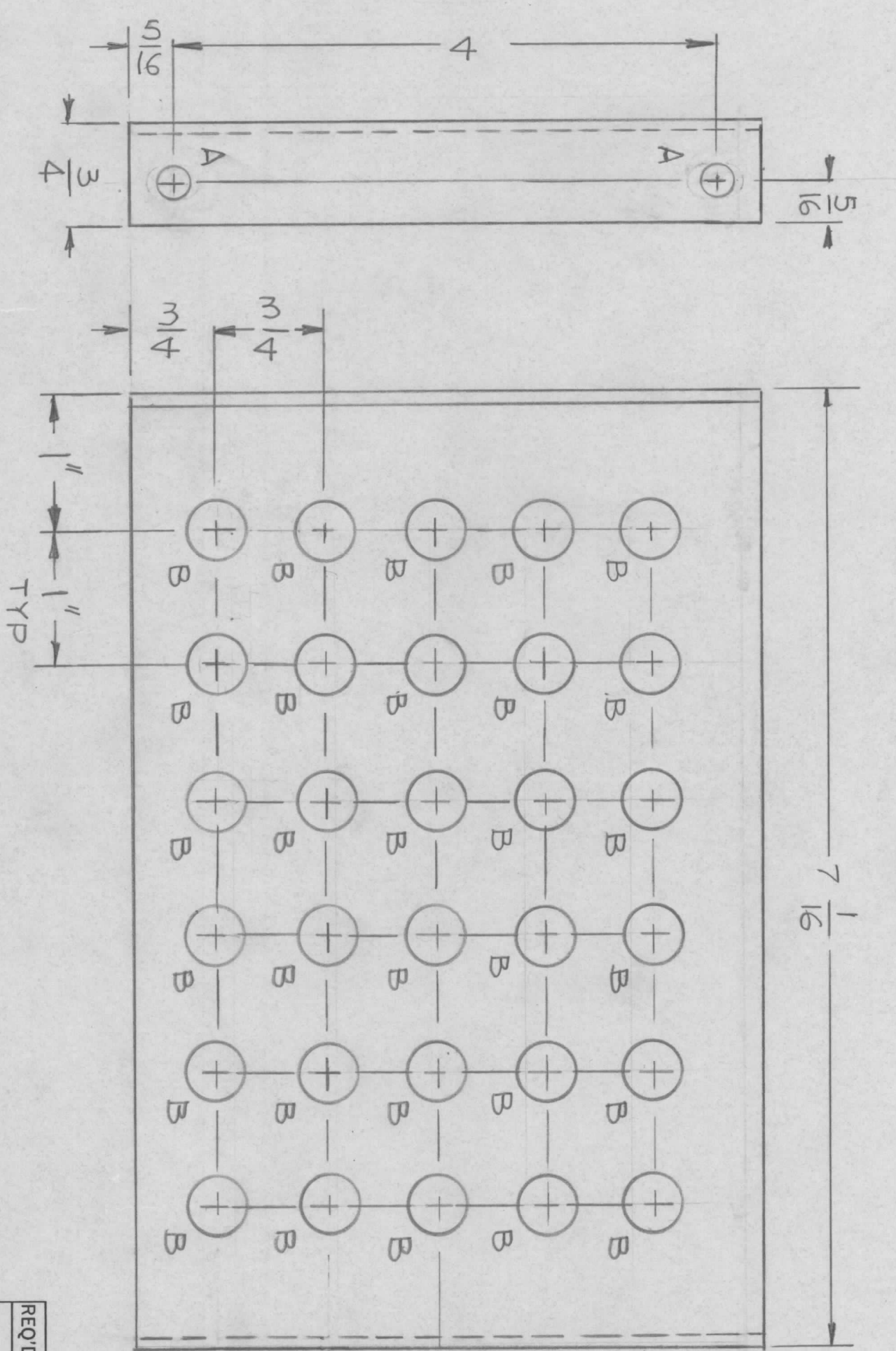


MS 6726 AS SHOWN 1 REQ
 MS 6726-2 MIRROR IMAGE 1 REQ

REVISIONS				DATE	APPROVED
EMN NO.	DRAFT	CHKD	ZONE	LTR	DESCRIPTION
					ORIGINAL RELEASE
					1-10-77



- HOLES:
- A - 1/4 DIA 2REQ
 - B - 7/16 DIA 30REQ
 - C - 1/4 x 3/8 SLOT 2REQ
 - D - 3/8 DIA 1REQ

UNLESS OTHERWISE SPECIFIED:

- USE MATERIAL THICKNESS FOR MAXIMUM RADIUS ON ALL BENDS.
- ALL ANGULAR BENDS 90 DEGREES.
- REMOVE ALL BURRS AND SHARP EDGES.

QTY / UNIT	1	MODEL USED ON	TOC-25-2	ASS'Y NO.	
APPLICATION		CODE			

DECIMALS	X ± .05	TOLS.	FRACTIONS	1/64
	.XX ± .01		ANGLES	0° .30'
	.XXX ± .005			
MATERIAL	.081 THK ALY 5052-H32			
FINISH	S404 YEL IRIDITE			

REQ'D	ITEM	PART NUMBER	DATE
			7-10-77
FINAL APPROV	MECH. DES.	ELECT. DES.	CHECKED
			G.D.L.
DRAWN	DATE	DATE	DATE
	6-8-76		

LIST OF MATERIAL

THE TECHNICAL MATERIEL CORP.			
MAMARONECK, NEW YORK			
BRACKET RETAIN			
(AX 5175)			
SIZE	CODE IDENT. NO.	DWG NO.	ISSUE
B	82679	MS 6726	1
SCALE	1:1	SHEET	OF

NOTICE TO PERSONS RECEIVING THIS DRAWING
 THE TECHNICAL MATERIEL CORPORATION claims proprietary right in the material disclosed hereon. This drawing is issued in confidence for engineering information only and may not be reproduced or used to manufacture anything shown hereon without permission from THE TECHNICAL MATERIEL CORPORATION to the user. This drawing is loaned for mutual assistance and is subject to recall at any time.