

APPLICATION

REVISIONS

QTY	MODEL USED ON	ASS'Y NO.	LTR	DESCRIPTION	DATE	E.M.N.NO	DRAFT	CHKD	APPD
	HFLM-10K/1		Ø	ORIGINAL RELEASE	1/10/77				*

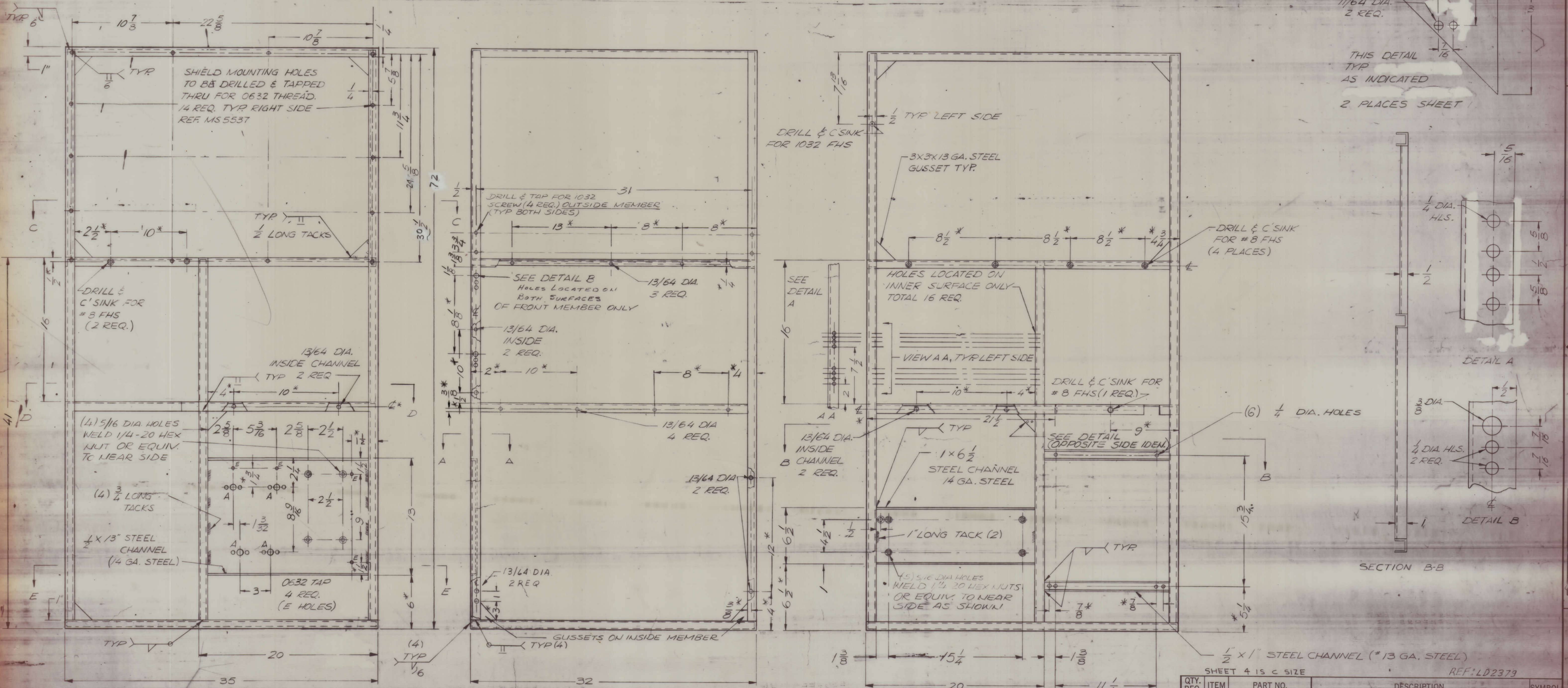
FOR SHEET 1, 2, 3, 4 & 6
SEE MS 5530 SHEET 1, 2, 3, 4 & 6

UNLESS OTHERWISE SPECIFIED DIMENSIONS ARE IN INCHES AND INCLUDE CHEMICALLY APPLIED OR PLATED FINISHES		REQ'D ITEM	PART NUMBER	DESCRIPTION	SYM.
DECIMALS	FRACTIONS	LIST OF MATERIAL			
.X ± .05	1/64	FINAL APPROVAL	DATE	THE TECHNICAL MATERIEL CORP. MAMARONECK, NEW YORK FRAME 10K TOP HFLM-10K/1	
.XX ± .01	TOLS.	MECH. DES.	DATE		
.XXX ± .005	ANGLES	ELECT. DES.	DATE		
	0° - 30°	CHECKED	DATE		
		DRAWN	DATE		
MATERIAL		G.D.L			
FINISH					
NOTICE TO PERSONS RECEIVING THIS DRAWING THE TECHNICAL MATERIEL CORPORATION claims proprietary right in the material disclosed hereon. This drawing is issued in confidence for engineering information only and may not be reproduced or used to manufacture anything shown hereon without permission from THE TECHNICAL MATERIEL CORPORATION to the user. This drawing is loaned for mutual assistance and is subject to recall at any time.		SIZE	CODE IDENT. NO.	DWG NO.	ISSUE
A	82679	M56704			Ø
SCALE		SHEET		OF	6

REVISIONS										REVISIONS					
ZONE	LTR	DESCRIPTION	DATE	E.M.N.O.	DRAFT	CHKD	APPD.	E.M.N.O.	DRAFT	CHKD	ZONE	LTR	DESCRIPTION	DATE	APPROVED

NOTE: 1. ALL CHANNELS ARE 1 X 13 GA. STEEL UNLESS OTHERWISE NOTED.
 2. TOP & BOTTOM IS 13 GA. STEEL.
 3. GRIND ALL EXTERNAL WELDS FLUSH.

NOTE: DIMENSIONS WITH ASTERISKS (*) ARE NON CRITICAL. TOLERANCE $\pm 1/16$



QTY. REQ.	ITEM	PART NO.	DESCRIPTION	SYMBOL

SHEET 4 IS C SIZE REF: LD2373

FINAL APPROVAL		DATE
F. BIDETTI		8-12-76
MECH. DES.		DATE
ALP		
ELECT. DES.		DATE
CHECKED		DATE
DRAWN		DATE
C. Schindler		6-7-76

LIST OF MATERIAL	
THE TECHNICAL MATERIEL CORP. MAMARONECK, NEW YORK	
FRAME, 10K TECK	

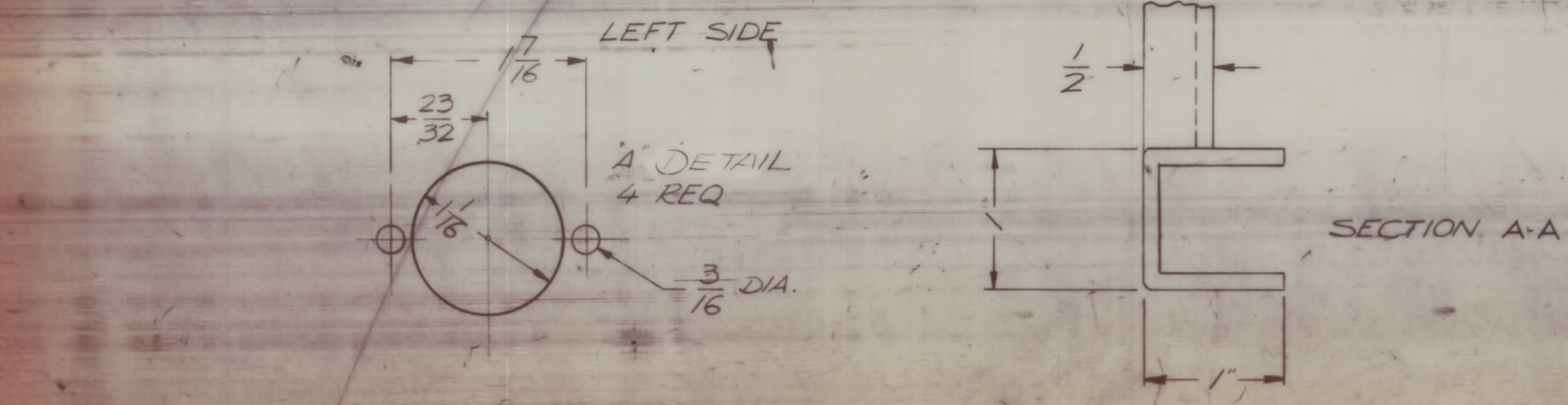
QTY / UNIT	MODEL USED ON	ASS'Y NO.
	HFLM-10K-1	ALA-10K
	ALA-10K	ALA-10K
APPLICATION		
	CODE	

TOLERANCES ON	
DECIMALS	FRACTIONS
.X \pm .05	$\pm 1/64$
.XX \pm .01	ANGLES
.XXX \pm .005	$\pm 0^{\circ} 30'$

MATERIAL 1304 CRS EXCEPT AS NOTED	
FINISH COPPER FLASH & CLEAR IRIDITE	

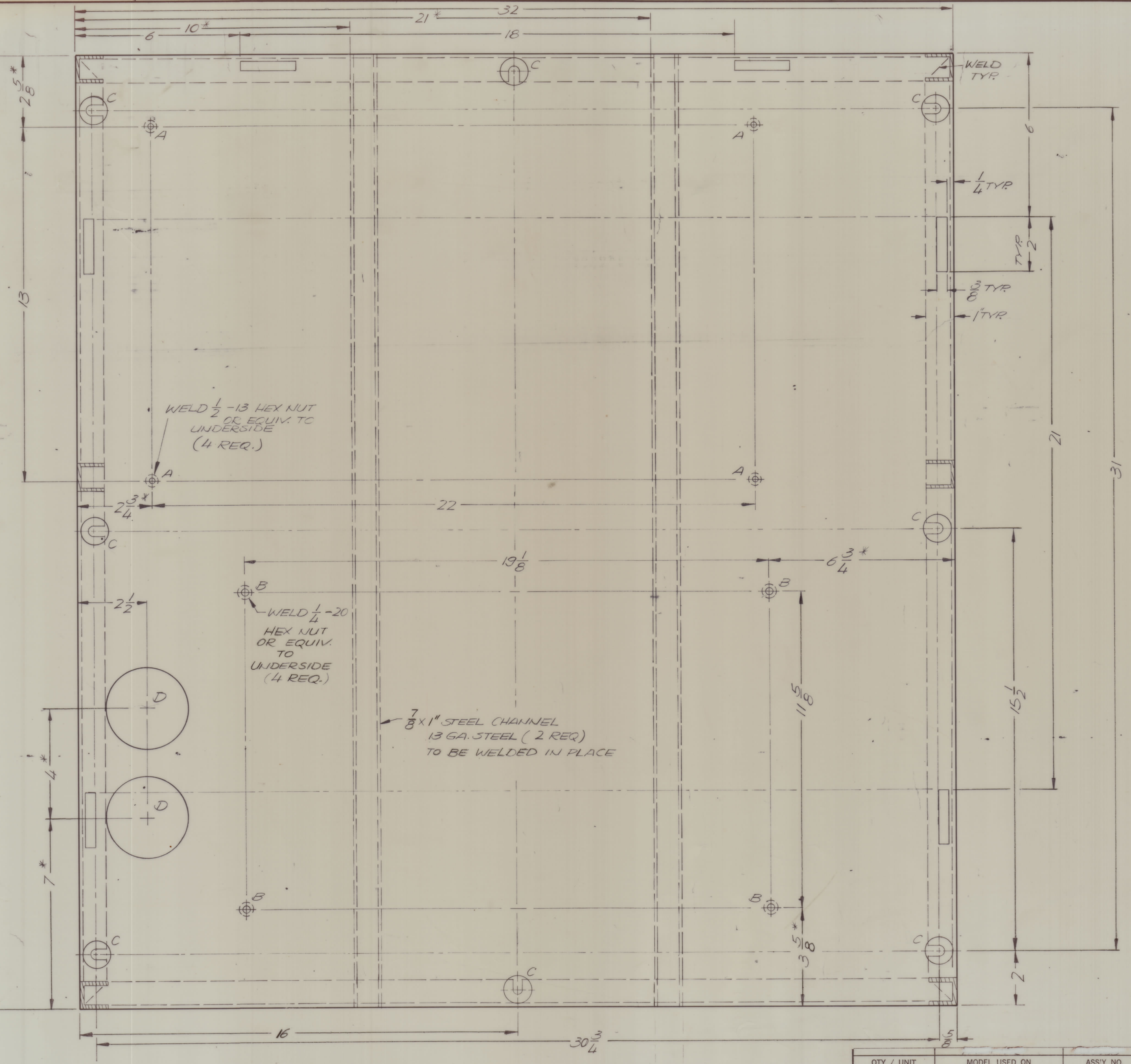
SIZE	CODE IDENT NO.	DWG NO.	ISSUE
D	82679	MS 6704	

SCALE SHEET 1 OF 6



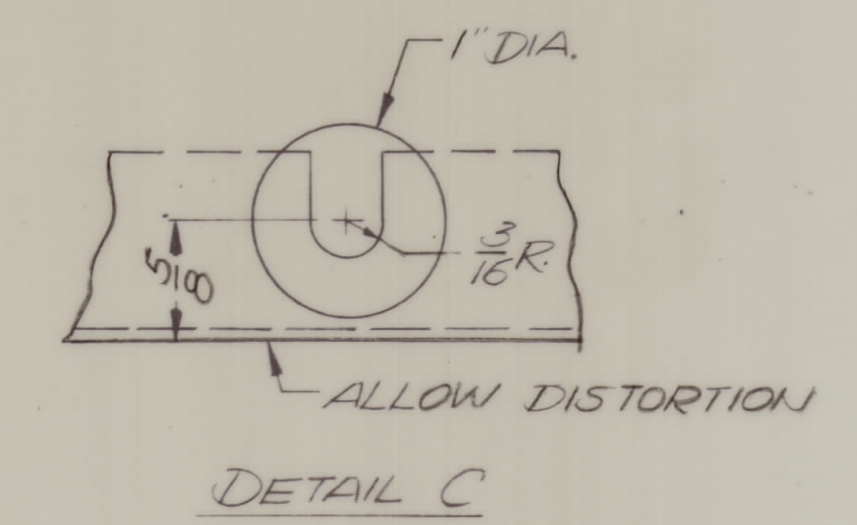
NOTICE TO PERSONS RECEIVING THIS DRAWING
 THE TECHNICAL MATERIEL CORPORATION claims proprietary right in the material disclosed hereon. This drawing is issued in confidence for engineering information only and may not be reproduced or used to manufacture anything shown hereon without permission from THE TECHNICAL MATERIEL CORPORATION to the user. This drawing is loaned for mutual assistance and is subject to recall at any time.

REVISIONS					DATE	APPROVED
E.M.N.O.	DRAFT	CHKD	ZONE	LTR	DESCRIPTION	
						9-76



NOTE: DIMENSIONS WITH ASTERISKS (*) ARE NON CRITICAL TOLERANCE ± 1/16

HOLE DESCRIPTION	QTY
A — 9/16 DIA.	4
B — 5/16 DIA.	4
C — SEE DETAIL C	8
D — 3" DIA.	2



SECTION E-E FRONT

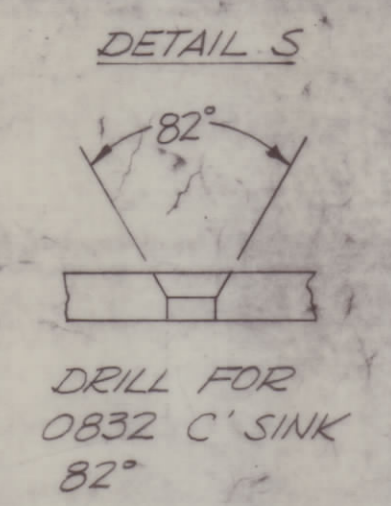
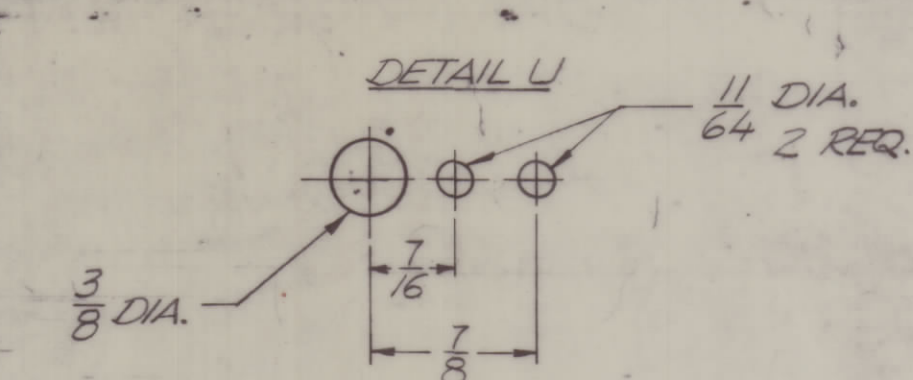
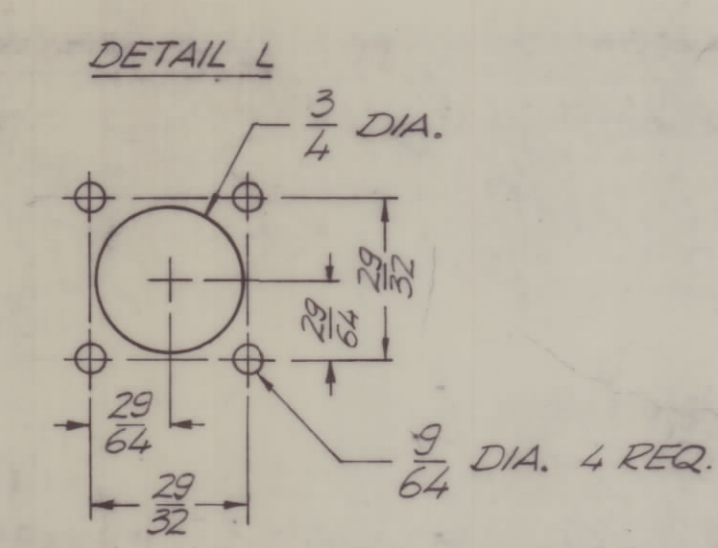
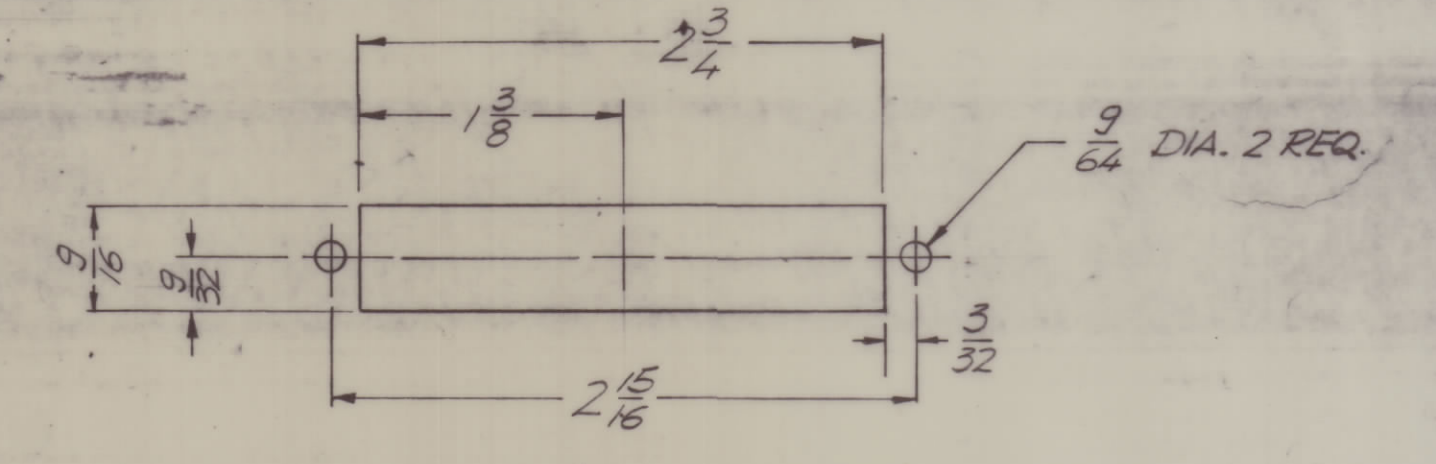
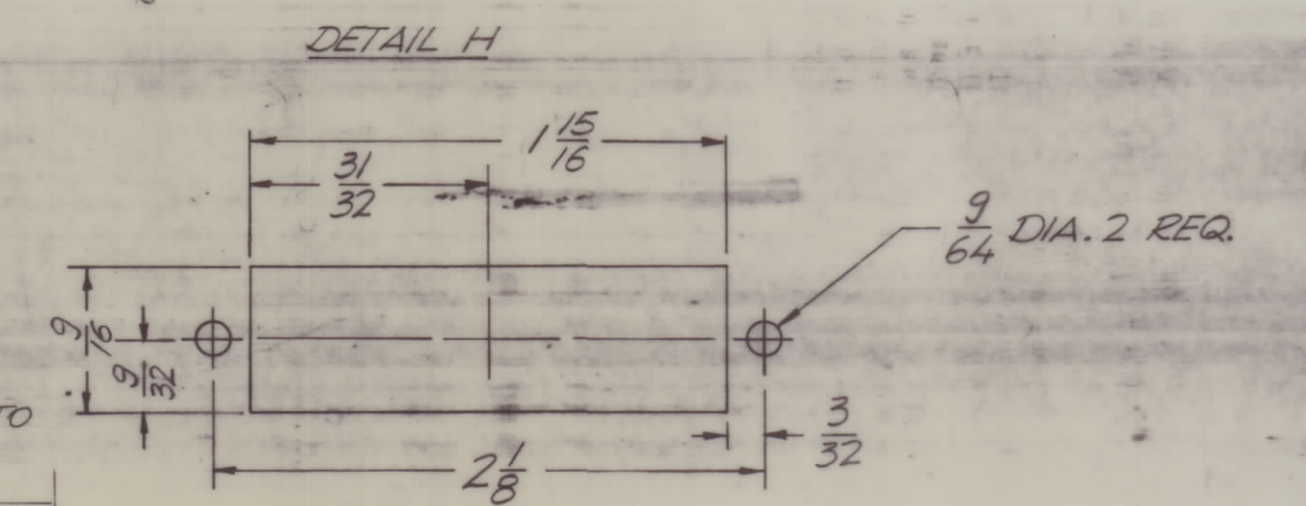
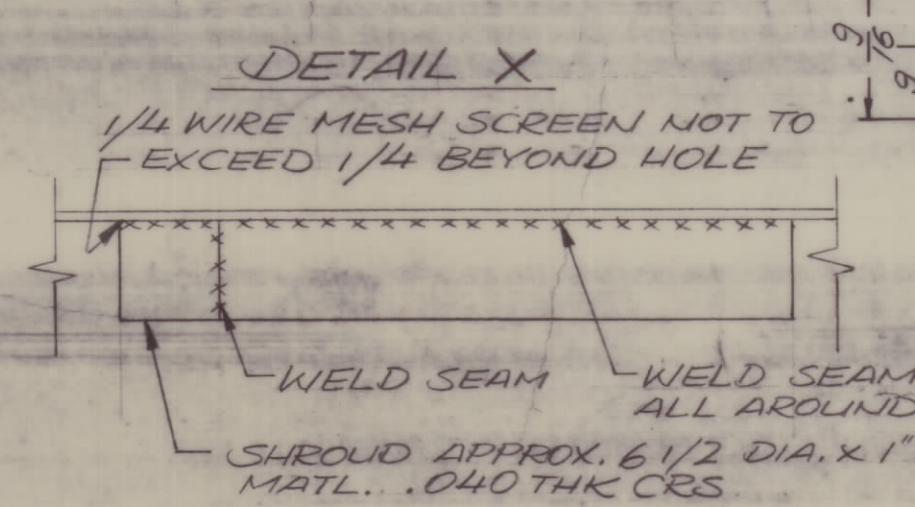
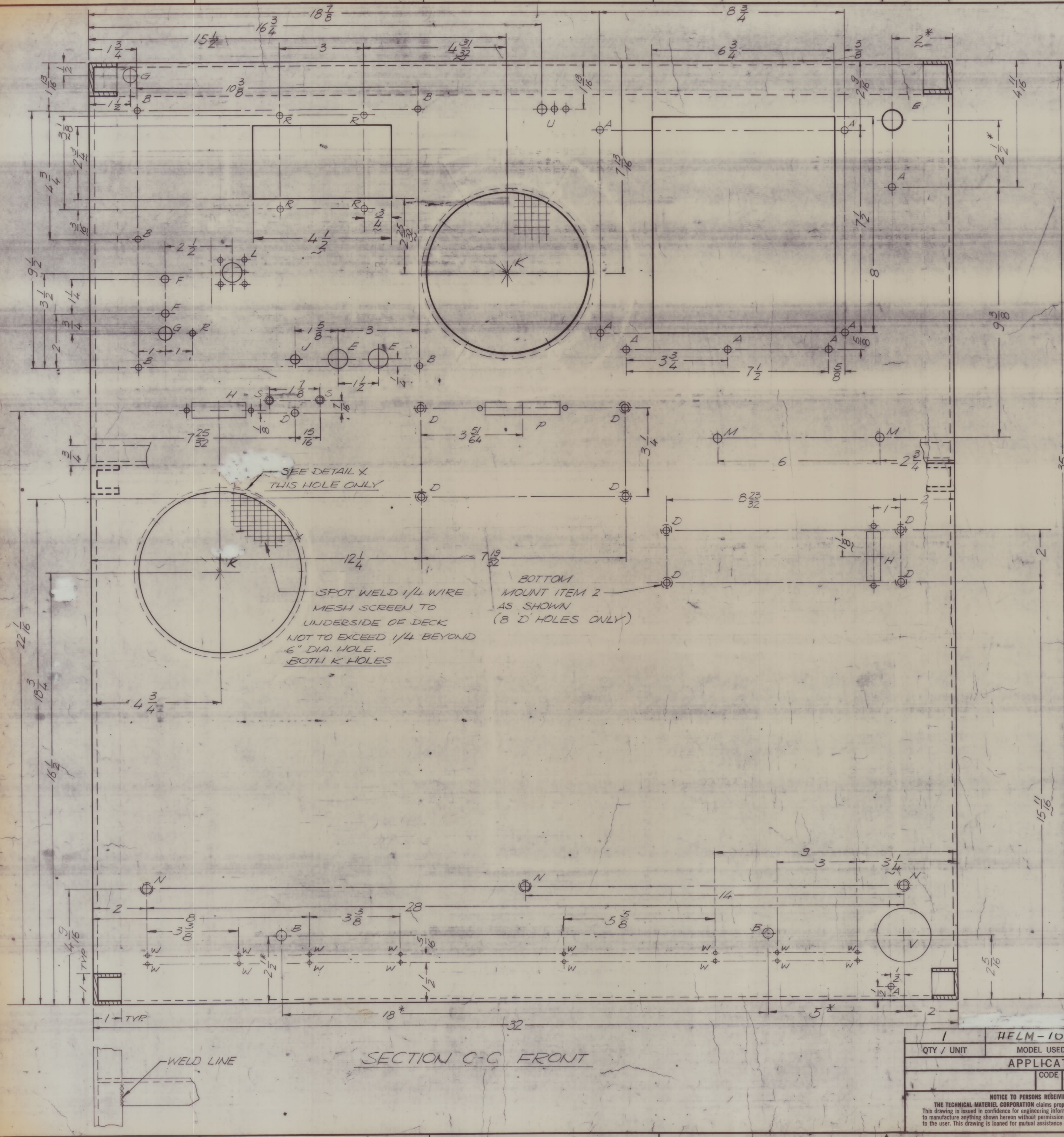
QTY/UNIT	HELM-10K-1	ASSY NO.
	M/L/O	

QTY / UNIT	MODEL USED ON	ASSY NO.
	APPLICATION	
	CODE	
<small>NOTICE TO PERSONS RECEIVING THIS DRAWING</small> <small>THE TECHNICAL MATERIEL CORPORATION claims proprietary right in the material disclosed hereon. This drawing is issued in confidence for engineering information only and may not be reproduced or used to manufacture anything shown hereon without permission from THE TECHNICAL MATERIEL CORPORATION to the user. This drawing is loaned for mutual assistance and is subject to recall at any time.</small>		

UNLESS OTHERWISE SPECIFIED DIMENSIONS ARE IN INCHES AND INCLUDE CHEMICALLY APPLIED OR PLATED FINISHES	
DECIMALS	FRACTIONS
X = .05	± 1/64
XX = .01	ANGLES
XXX = .005	± 0° -30'

QTY. REQ.	ITEM	PART NO.	DESCRIPTION	SYMBOL
	FB		LIST OF MATERIAL	
FINAL APPROVAL		DATE	THE TECHNICAL MATERIEL CORP. MAMARONECK, NEW YORK	
MECH. DES.		DATE	FRAME 10K P.S. DECK	
ELECT. DES.		DATE	SIZE CODE IDENT NO. DWG NO.	
CHECKED		DATE	D 82679 MS6704	
DRAWN		DATE	SCALE 1/2 SHEET 2 OF 6	
GDL		6-28-76	ISSUE	

REVISIONS					
E.M.N.O	DRAFT	CHKD	ZONE	LTR	DESCRIPTION



HTS	DESCRIPTION	REQ
A	15/64 DIA.	9
B	13/64 DIA.	7
C	DELETED	
D	.221-.224 DIA.	9
E	3/4 DIA.	3
F	1/4 DIA.	2
G	1/2 DIA.	2
H	SEE DETAIL	2
J	9/32 DIA.	1
K	6" DIA.	2
L	SEE DETAIL	1
M	5/16 DIA.	2
N	DRILL & TAP 0632	3
P	SEE DETAIL	1
R	1/64 DIA.	5
S	SEE DETAIL	2
T	DELETED	
U	SEE DETAIL	1
V	2" DIA.	1
W	DRILL & TAP 0440	16

NOTE: DIMENSIONS WITH ASTERISKS (*) ARE NON CRITICAL. TOLERANCE ± 1/16

QTY. REQ.	ITEM	PART NO.	DESCRIPTION	SYMBOL
8	2	0832-6	WELD NUT	D
1			DELETED	

F. BUDETTI
LIST OF MATERIAL

FINAL APPROVAL	DATE	THE TECHNICAL MATERIEL CORP. MAMARONECK, NEW YORK
MFG. DES.	DATE	
ELECT. DES.	DATE	
CHECKED	DATE	
DRAWN	DATE	PA. DECK FRAME 10K TECK.
SIZE CODE IDENT NO. DWG NO.		ISSUE
D 82679 MS6704		
SCALE 1/2		SHEET 3 OF 6

1 HELM-10K-1		
QTY / UNIT	MODEL USED ON	ASS'Y NO.
APPLICATION		
CODE		
<small>NOTICE TO PERSONS RECEIVING THIS DRAWING</small> <small>THE TECHNICAL MATERIEL CORPORATION claims proprietary right in the material disclosed herein. This drawing is issued in confidence for engineering information only and may not be reproduced or used to manufacture anything shown hereon without permission from THE TECHNICAL MATERIEL CORPORATION to the user. This drawing is loaned for mutual assistance and is subject to recall at any time.</small>		

UNLESS OTHERWISE SPECIFIED DIMENSIONS ARE IN INCHES AND INCLUDE CHEMICALLY APPLIED OR PLATED FINISHES

TOLERANCES ON
 DECIMALS FRACTIONS
 X ± .05 ± 1/64
 XX ± .01 ANGLES
 XXX ± .005 ± 0°-30'

MATERIAL 13 GA CRS EXCEPT AS NOTED

FINISH COPPER FLASH & CLEAR IRIDITE

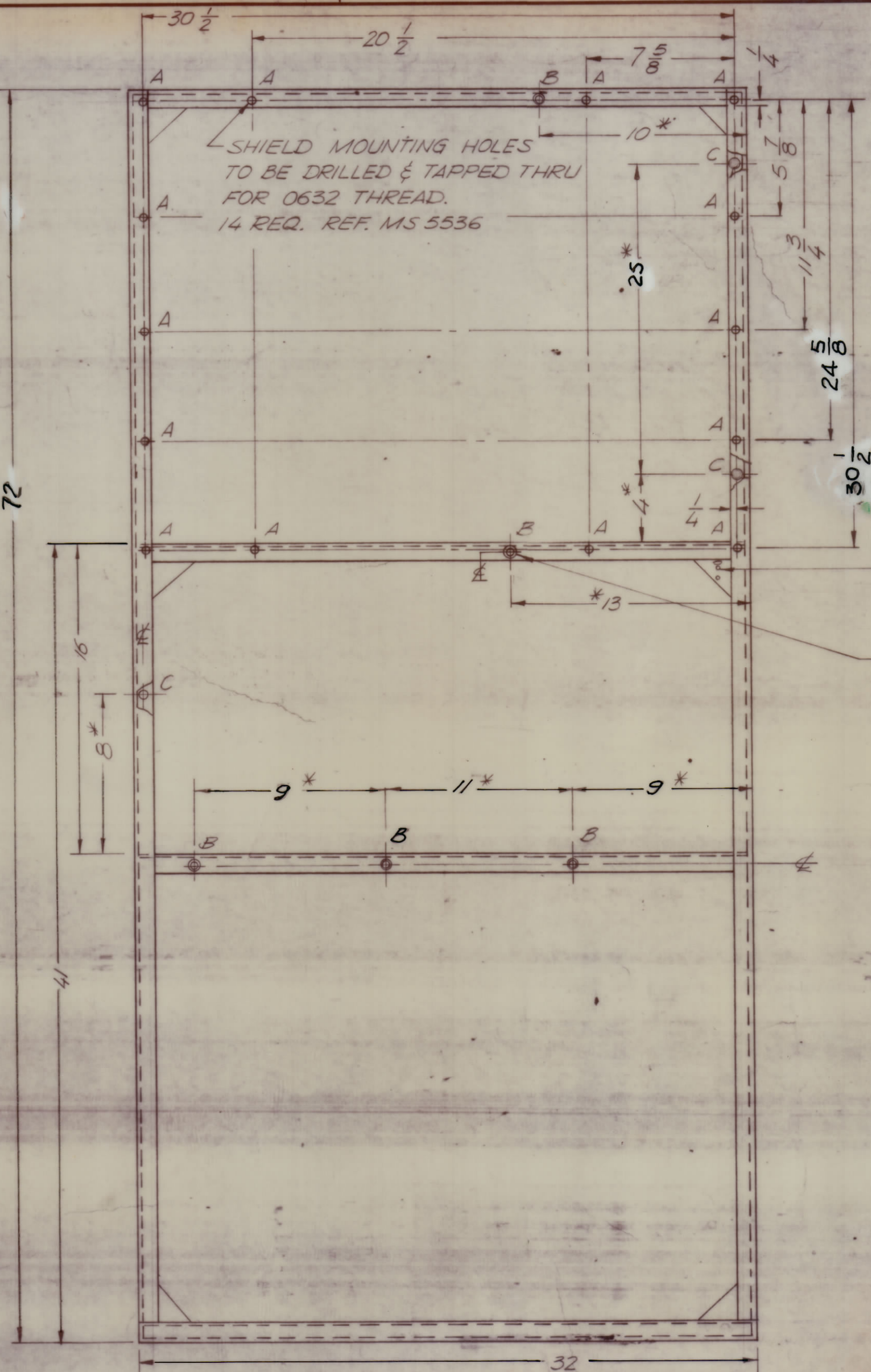
4

3

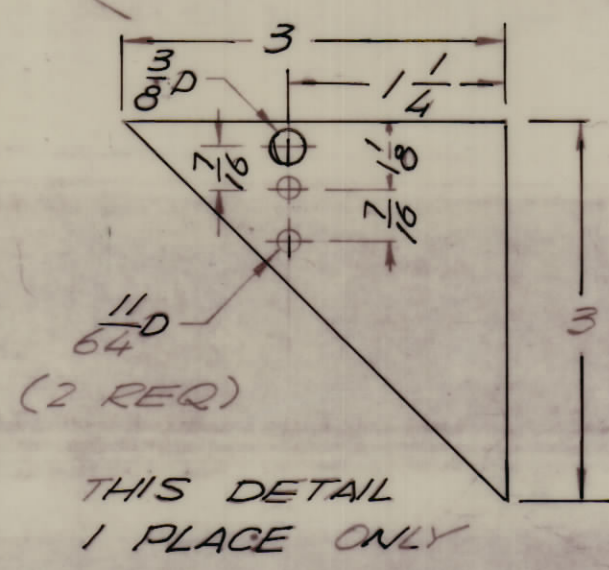
2

1

REVISIONS							
E.M.N.NO	DRAFT	CHKD	ZONE	LTR	DESCRIPTION	DATE	APPROVED
						9-76	



HOLE	DESCRIPTION	REQ.
A	TAP THRU 0632	14
B	DRILL & C' SINK #8 FHS	5
C	13/64 DIA.	3



- NOTE
1. ALL CHANNELS ARE 1 X 1 X 13 GA. STEEL UNLESS OTHERWISE NOTED.
 2. GRIND ALL EXTERNAL WELDS FLUSH.
 3. DIMENSIONS WITH ASTERISKS ARE NON CRITICAL TOLERANCE $\pm 1/16$

SHEETS 1, 2, 3, 5 & 6 ARE D SIZE

REAR VIEW

1	HFLM-10K-1	
QTY / UNIT	MODEL USED ON	ASS'Y NO.
APPLICATION		
CODE		

NOTICE TO PERSONS RECEIVING THIS DRAWING
 THE TECHNICAL MATERIEL CORPORATION claims proprietary right in the material disclosed hereon. This drawing is issued in confidence for engineering information only and may not be reproduced or used to manufacture anything shown hereon without permission from THE TECHNICAL MATERIEL CORPORATION to the user. This drawing is loaned for mutual assistance and is subject to recall at any time.

UNLESS OTHERWISE SPECIFIED DIMENSIONS ARE IN INCHES AND INCLUDE CHEMICALLY APPLIED OR PLATED FINISHES

TOLERANCES ON	
DECIMALS	FRACTIONS
.X \pm .05	$\pm 1/64$
.XX \pm .01	ANGLES
.XXX \pm .005	$\pm 0^\circ -30'$

MATERIAL 13 GA CRS EXCEPT AS NOTED
 FINISH COPPER FLASH & CLEAR IRIDITE

QTY. REQ.	ITEM	PART NO.	DESCRIPTION	SYMBOL
F. BUDETTI LIST OF MATERIAL				
FINAL APPROVAL		DATE	THE TECHNICAL MATERIEL CORP.	
MECH. DES.		DATE	MAMARONECK, NEW YORK	
ELECT. DES.		DATE	FRAME 10K REAR	
CHECKED		DATE		
DRAWN G.D.L.		DATE 6-28-76		
SIZE	CODE	IDENT NO.	DWG NO.	ISSUE
C		82679	MS6704	
SCALE NTS				SHEET 4 OF 6

4

3

2

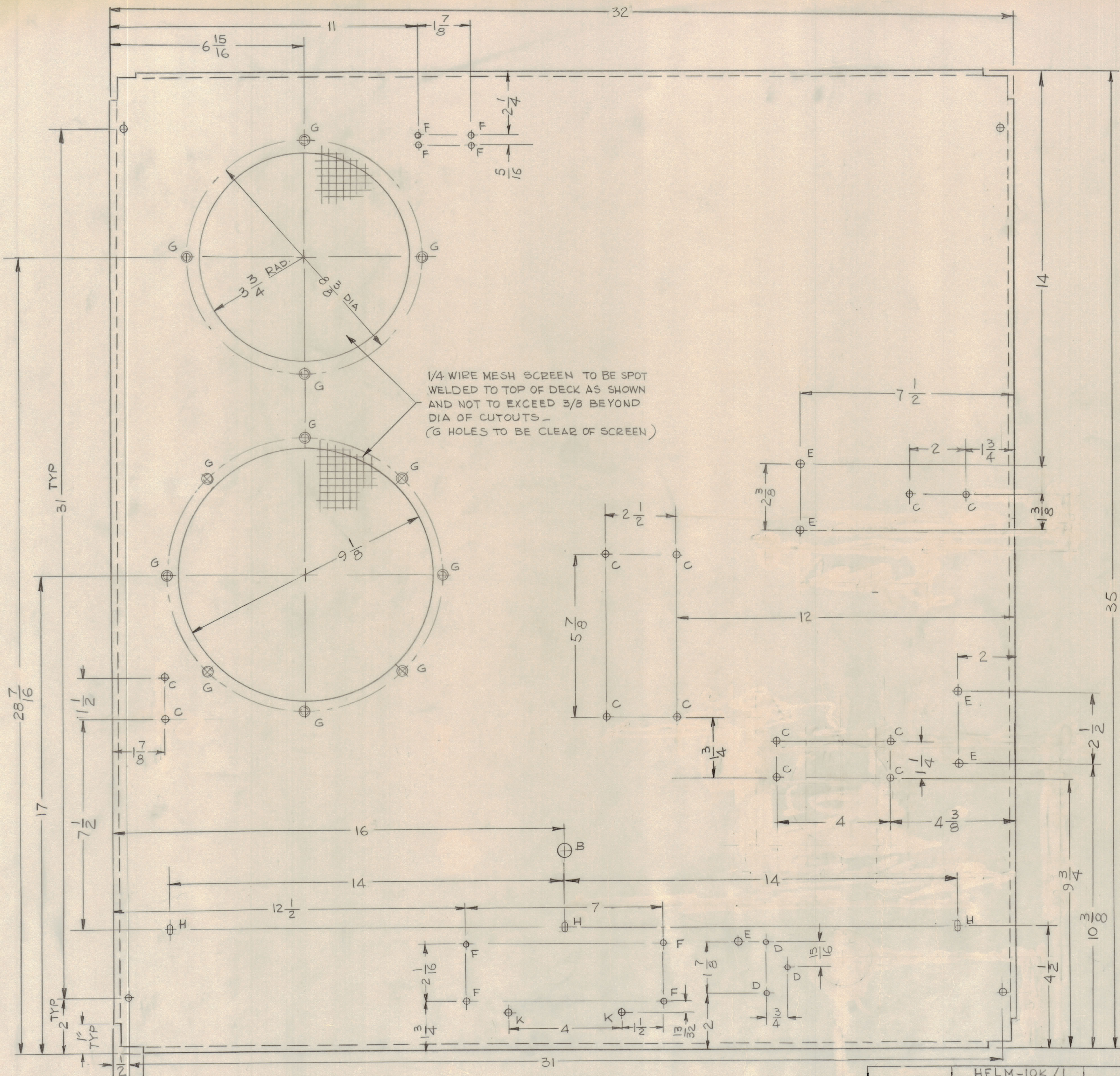
1

MS6704

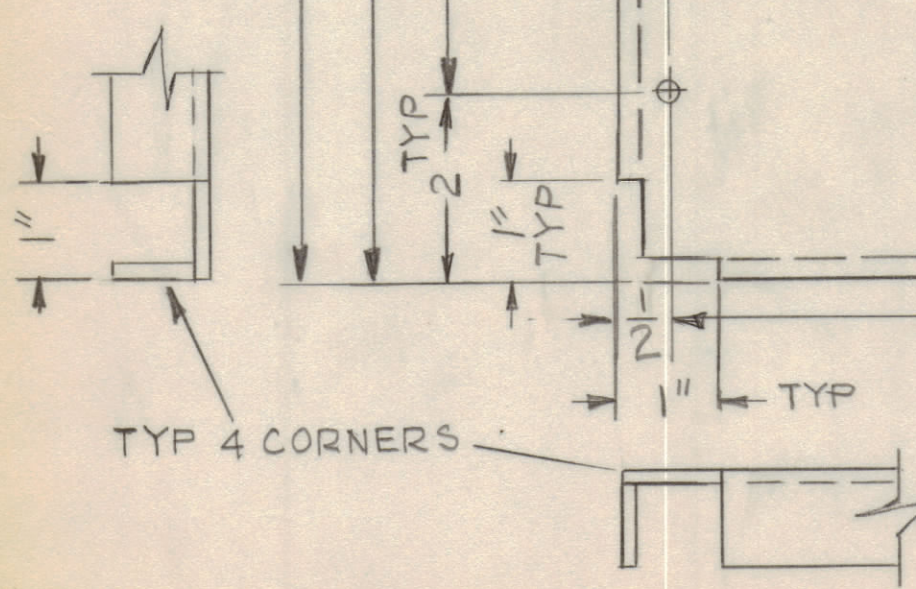
B

A

REVISIONS					
E.M.N.O	DRAFT	CHKD	ZONE	LTR	
DESCRIPTION				DATE	APPROVED
					9-76



HOLES	DESCRIPTION	REQ.
A	DRILL & TAP FOR 1032 THD	4
B	1/4 DIA	1
C	13/64 DIA	12
D	3/16 DIA	3
E	15/64 DIA	5
F	DRILL & TAP FOR 632 THD	8
G	DRILL & TAP FOR 832 THD	12
H	11/64 x 11/32 SLOT	3



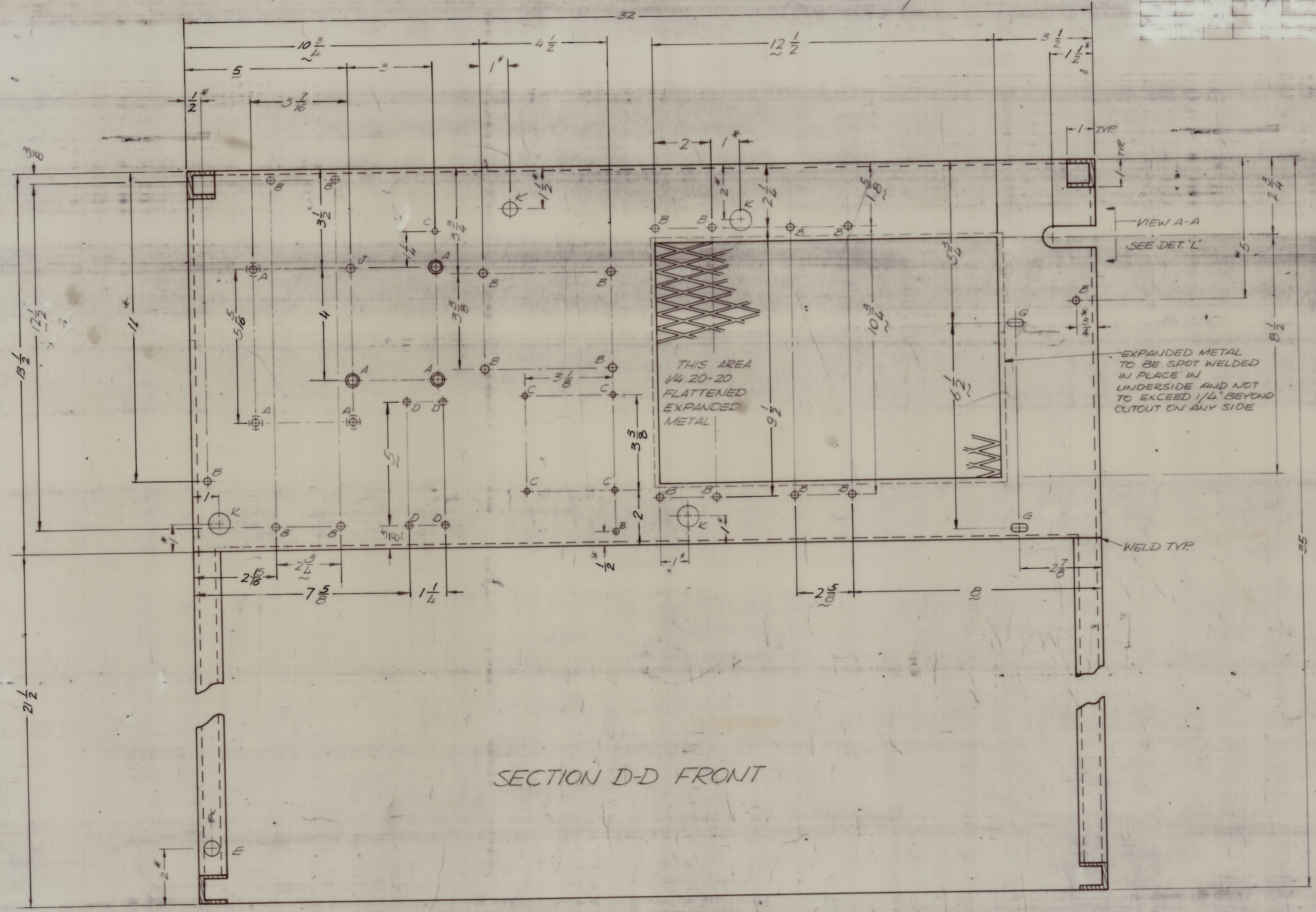
FRONT

HFLM-10K/1		
QTY / UNIT	MODEL USED ON	ASS'Y NO.
APPLICATION		
CODE		
<small>NOTICE TO PERSONS RECEIVING THIS DRAWING</small> <small>THE TECHNICAL MATERIEL CORPORATION claims proprietary right in the material disclosed herein. This drawing is issued in confidence for engineering information only and may not be reproduced or used to manufacture anything shown hereon without permission from THE TECHNICAL MATERIEL CORPORATION to the user. This drawing is loaned for mutual assistance and is subject to recall at any time.</small>		

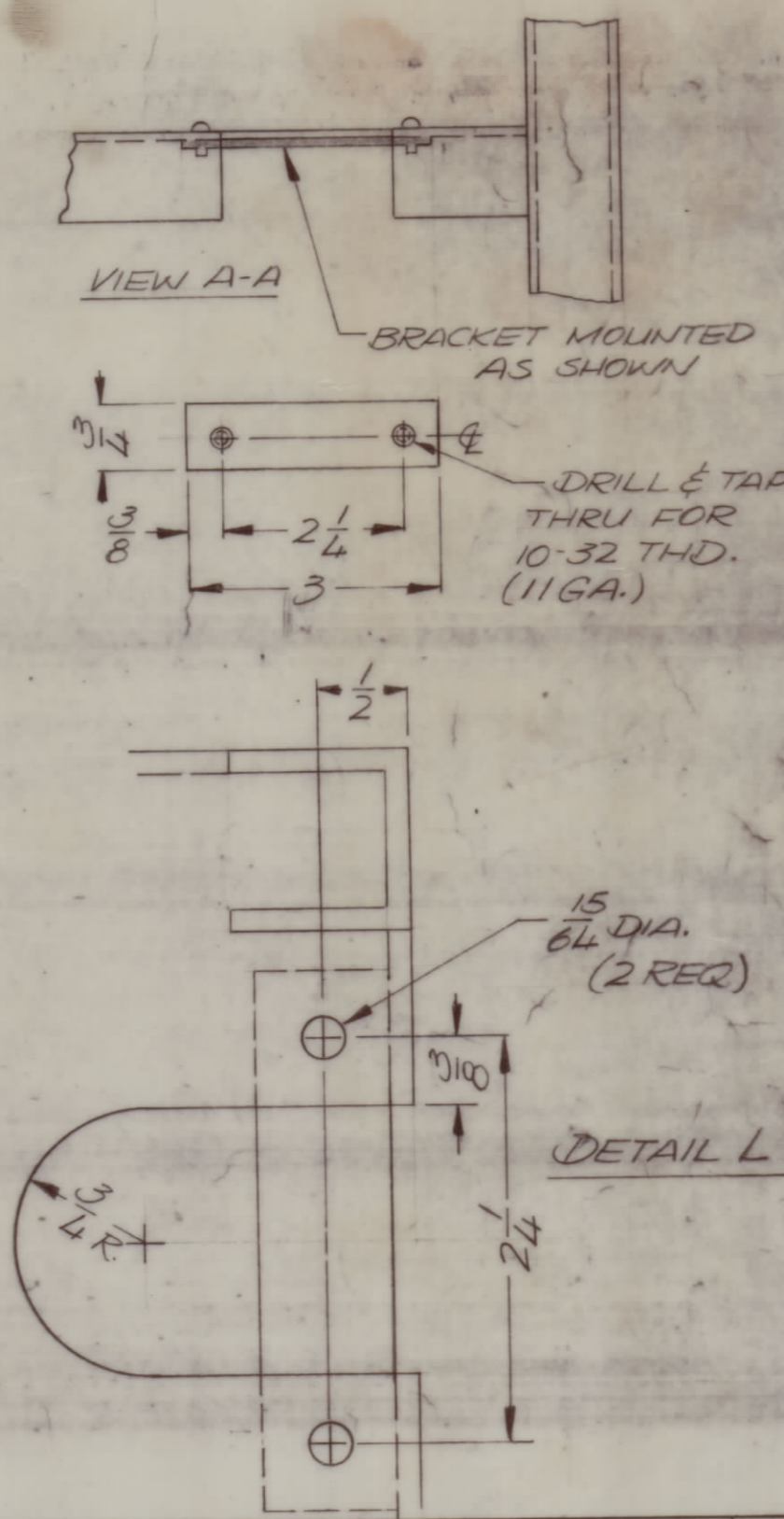
UNLESS OTHERWISE SPECIFIED DIMENSIONS ARE IN INCHES AND INCLUDE CHEMICALLY APPLIED OR PLATED FINISHES	
TOLERANCES ON DECIMALS .X ± .05 .XX ± .01 .XXX ± .005	TOLERANCES ON FRACTIONS ± 1/64 ANGLES ± 0° - 30'
MATERIAL 13 GA CRS EXCEPT AS NOTED	
FINISH COPPER FLASH & CLEAR IRIDITE	

QTY. REQ.	ITEM	PART NO.	DESCRIPTION	SYMBOL
LIST OF MATERIAL				
FINAL APPROVAL: <i>[Signature]</i> DATE: 2-12-76 MECH. DES. DATE: ELECT. DES. DATE: CHECKED DATE: DRAWN: G-DL DATE: 3-30-76				
THE TECHNICAL MATERIEL CORP. MAMARONECK, NEW YORK				
FRAME 10K TOP (HFLM-10K/1)				
SIZE	CODE IDENT NO.	DWG NO.	ISSUE	
D	82679	MS 6704	/	
SCALE 1/2				SHEET 5 OF 6

REVISIONS				
E.M.N. NO	DRAFT	CHKD	ZONE	LTR



SECTION D-D FRONT



HOLE	DESCRIPTION	QTY
A	1/4 20 WELD NUT	7
B	15/64 DIA.	15
C	11/64 DIA.	5
D	TAP THRU FOR 0632	4
E	1/2 DIA.	1
F	DELETED	
G	1/4 X 1/2 SLOT	2
H	DELETED	
J	9/32 DIA.	1
K	3/16 DIA.	4
L	SEE 'L' DETAIL	1

NOTE 1. 1/4 20-20 FLATTENED EXPANDED METAL TO BE MOUNTED ON BOTTOM SURFACE AND TO EXTEND 1/4 INCH BEYOND EDGE.

2. WELD NUTS (HOLE A) TO BE MOUNTED AS SHOWN

3. DIMENSIONS WITH ASTERISKS ARE NON CRITICAL. TOLERANCE ± 1/16

1	HFLM-10K-1	
QTY / UNIT	MODEL USED ON	ASSY. NO.
	APPLICATION	
	CODE	

UNLESS OTHERWISE SPECIFIED DIMENSIONS ARE IN INCHES AND INCLUDE CHEMICALLY APPLIED OR PLATED FINISHES

TOLERANCES ON
 DECIMALS ± .05
 FRACTIONS ± 1/64
 ANGLES ± 0° -30'

MATERIAL 13 GA CRS
 EXCEPT AS NOTED
 FINISH COPPER FLASH & CLEAR IRIDITE

QTY. REQ.	ITEM	PART NO.	DESCRIPTION	SYMBOL

FINAL APPROVAL: F. BUDETTI DATE: 9-12-76

MECH. DES. DATE:

ELECT. DES. DATE:

CHECKED DATE:

DRAWN: G. Bedard DATE: 6-28-76

LIST OF MATERIAL

THE TECHNICAL MATERIEL CORP.
MAMARONECK, NEW YORK

FRAME 10K, BLOWER DECK

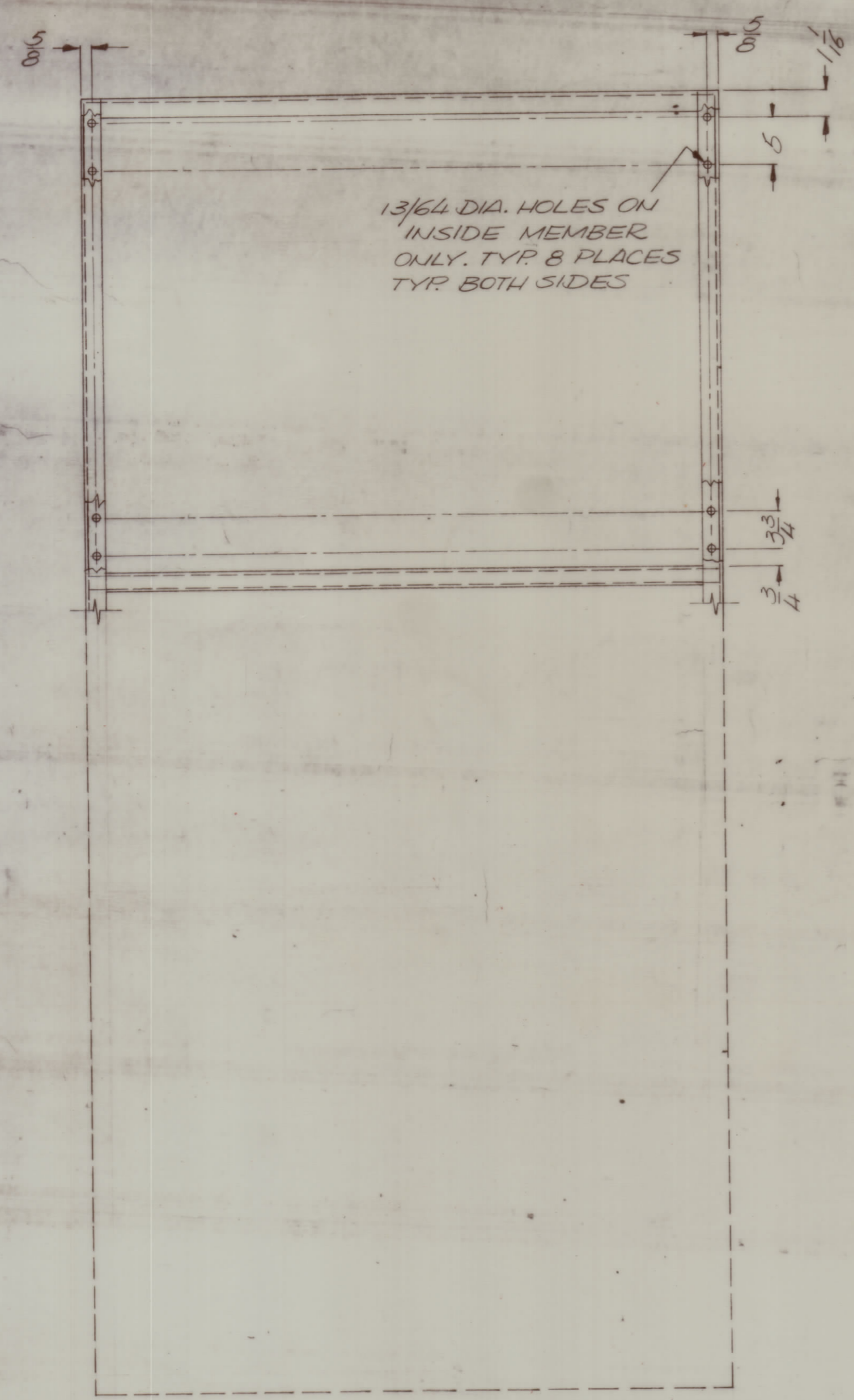
SIZE CODE IDENT NO. DWG NO. ISSUE

D 82679 M56704

SCALE 1/2 SHEET 6 OF 7

NOTICE TO PERSONS RECEIVING THIS DRAWING: THE TECHNICAL MATERIEL CORPORATION claims proprietary right in the material disclosed hereon. This drawing is issued in confidence for engineering information only and may not be reproduced or used to manufacture anything shown hereon without permission from THE TECHNICAL MATERIEL CORPORATION to the user. This drawing is loaned for mutual assistance and is subject to recall at any time.

REVISIONS					DATE	APPROVED
E.M.N.O.	DRAFT	CHKD	ZONE	LTR	DESCRIPTION	
						9-76



FRONT VIEW

1	HFLM-10K-1	
QTY / UNIT	MODEL USED ON	ASS'Y NO.
APPLICATION		
CODE		
NOTICE TO PERSONS RECEIVING THIS DRAWING		
THE TECHNICAL MATERIEL CORPORATION claims proprietary right in the material disclosed hereon. This drawing is issued in confidence for engineering information only and may not be reproduced or used to manufacture anything shown hereon without permission from THE TECHNICAL MATERIEL CORPORATION to the user. This drawing is loaned for mutual assistance and is subject to recall at any time.		

UNLESS OTHERWISE SPECIFIED DIMENSIONS ARE IN INCHES AND INCLUDE CHEMICALLY APPLIED OR PLATED FINISHES	
TOLERANCES ON	
DECIMALS	FRACTIONS
.X ± .05	± 1/64
.XX ± .01	ANGLES
.XXX ± .005	± 0° -30'

QTY. REQ.	ITEM	PART NO.	DESCRIPTION	SYMBOL
F. BUDETTI LIST OF MATERIAL				
THE TECHNICAL MATERIEL CORP. MAMARONECK, NEW YORK				
FRAME 10K TECK.				
MATERIAL		SIZE CODE IDENT NO. DWG NO.		ISSUE
FINISH		D 82679	MS6704	φ
SCALE				SHEET 7 OF 7

MS6704