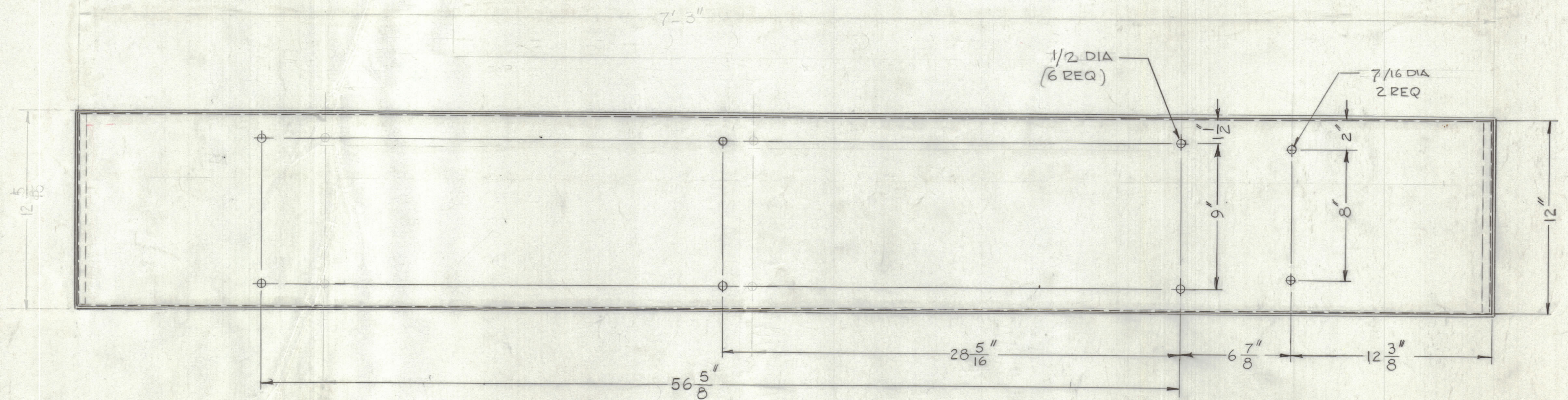
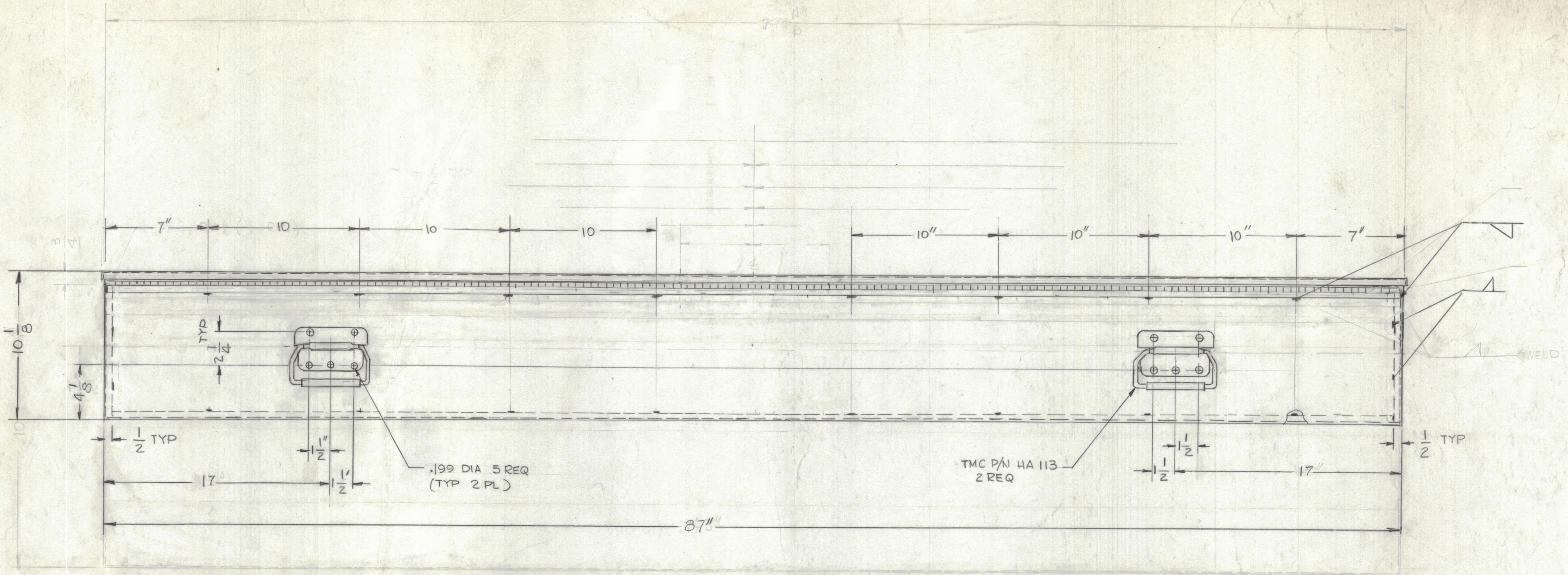


ZONE		SYM		DESCRIPTION		DATE		E.M.N. NO.		DRAFT		CHKD		APPD	
				ORIGINAL REVISIONS		1-10-77									



BOTTOM VIEW

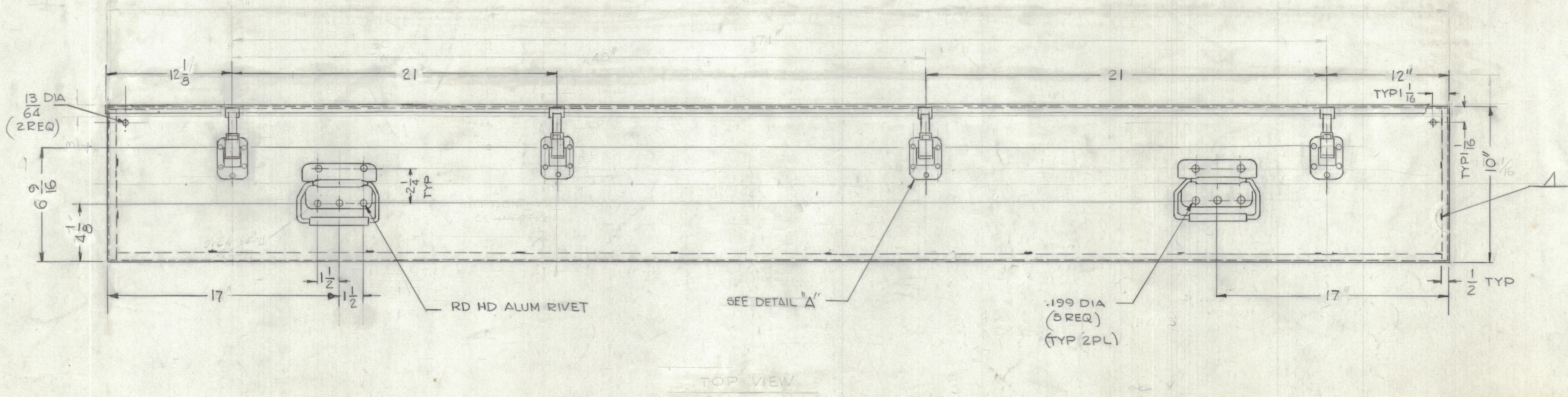
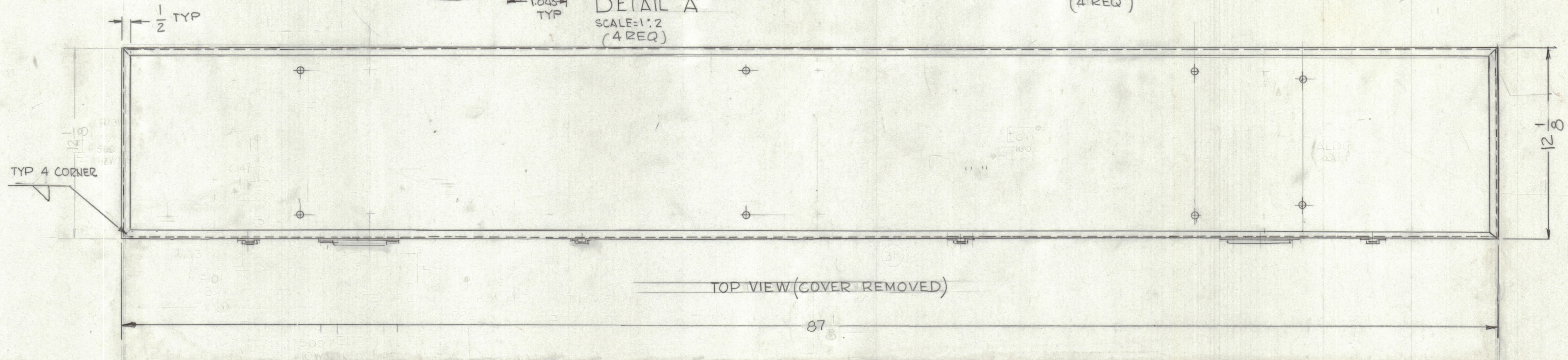
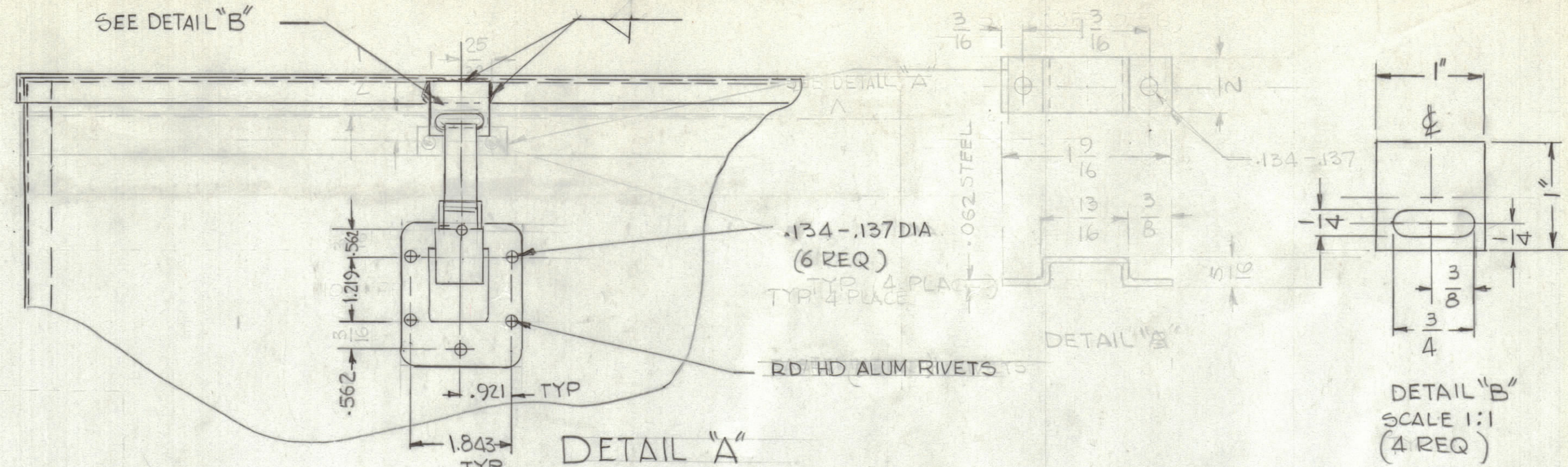
FINISH NOTES
 1- S114 - ZINC CHROMATE
 5- 521 TMC GREY TEXTURED VINYL PAINT

NOTES

1	VAS-	
SCALE	1:4	
THE CONTENTS OF THIS DRAWING ARE THE EXCLUSIVE PROPERTY OF THE TECHNICAL MATERIEL CORP. ITS UNAUTHORIZED USE OR REPRODUCTION IN WHOLE OR IN PART IS STRICTLY FORBIDDEN.		

REQ'D.	ITEM	PART NUMBER	DESCRIPTION	SYMBOL
LIST OF MATERIAL				
MATERIAL #18 GAGE STEEL-			THE TECHNICAL MATERIEL CORP. MAMARONECK, NEW YORK	
FINISH SEE NOTE			TITLE ANTENNA CASE, MACHINING	
UNLESS OTHERWISE SPECIFIED DIMENSIONS ARE IN INCHES AND INCLUDE CHEMICALLY APPLIED OR PLATED FINISHES			DRAWN GDL	DATE 2/12/75
DECIMALS ±.05			CHECKED	DATE
FRACTIONS ± 1/64			FINAL APPROVAL	
ANGLES ± 0° 30'			MS 6671	
			SHEET 1 OF 2	

ZONE		SYM		REVISIONS		DATE	E.M.N. NO.	DRAFT	CHKD	APPD
				ORIGINAL RELEASE		1-10-77				

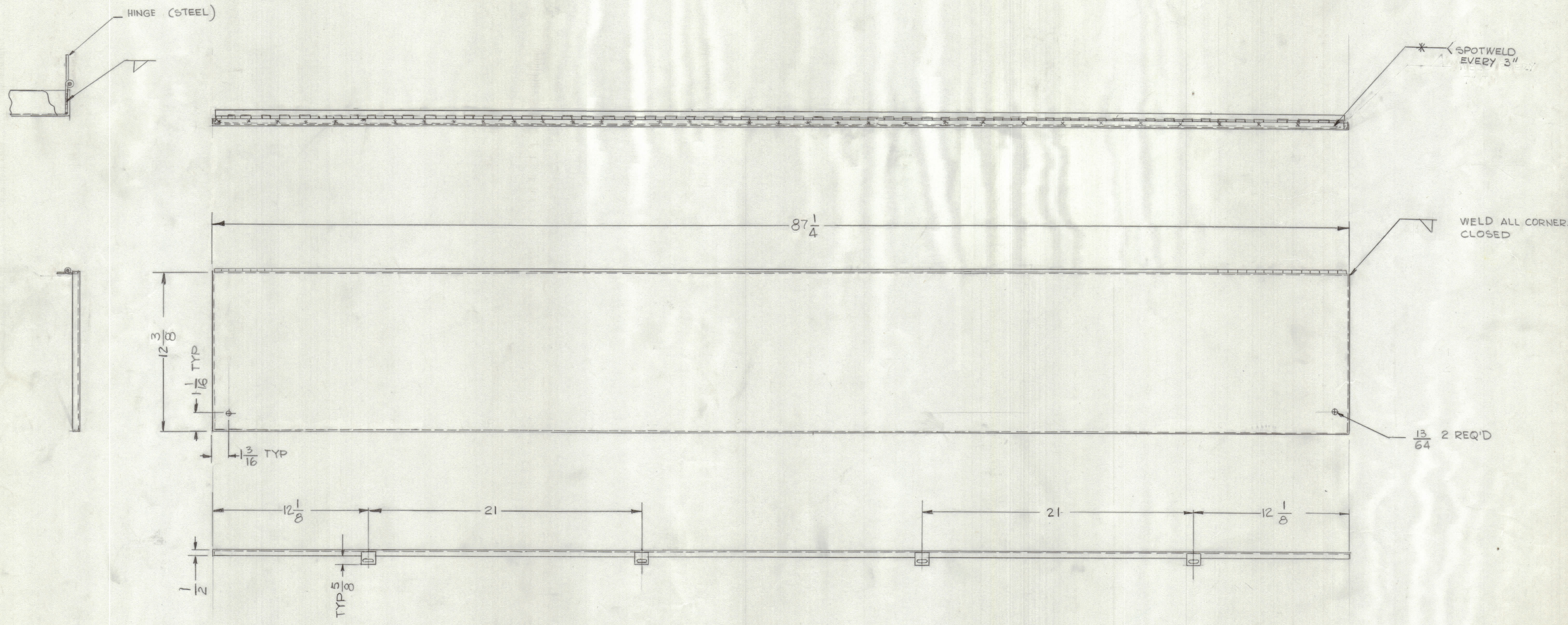


NOTES

QTY/UNIT	MODEL USED ON	ASSY. NO.
SCALE 1:4	CODE	
THE CONTENTS OF THIS DRAWING ARE THE EXCLUSIVE PROPERTY OF THE TECHNICAL MATERIEL CORP. ITS UNAUTHORIZED USE OR REPRODUCTION IN WHOLE OR IN PART IS STRICTLY FORBIDDEN.		

REQ'D.	ITEM	PART NUMBER	DESCRIPTION	SYMBOL
LIST OF MATERIAL				
THE TECHNICAL MATERIEL CORP. MAMARONECK, NEW YORK				
MATERIAL			TITLE	
FINISH			ANTENNA CASE MACHINING	
UNLESS OTHERWISE SPECIFIED DIMENSIONS ARE IN INCHES AND INCLUDE CHEMICALLY APPLIED OR PLATED FINISHES		DRAWN	DATE	FINAL APPROVAL
CHECKED		G. DELUCA	7-31-75	MS 6671
DECIMALS ±.005		ELECT. DES.		DATE
FRACTIONS ± 1/64		MECH. DES.		DATE
ANGLES ± 30'		SHEET		REV. LTR.
TOLERANCES		2 OF 3		

REVISIONS					
E.M.N.NO	DRAFT	CHKD	ZONE	LTR	DATE
					1-10-77
DESCRIPTION					APPROVED
Ø ORIGINAL RELEASE					*



FINISH NOTE :
 1- S114 ZINC CHROMATE
 2- S521 TMC GRAY TEXTURED VINYL PAINT

QTY / UNIT	MODEL USED ON	ASS'Y NO.
1	VAS-1	
APPLICATION		
CODE		
<small>NOTICE TO PERSONS RECEIVING THIS DRAWING</small> <small>THE TECHNICAL MATERIEL CORPORATION claims proprietary right in the material disclosed hereon. This drawing is issued in confidence for engineering information only and may not be reproduced or used to manufacture anything shown hereon without permission from THE TECHNICAL MATERIEL CORPORATION to the user. This drawing is loaned for mutual assistance and is subject to recall at any time.</small>		

UNLESS OTHERWISE SPECIFIED DIMENSIONS ARE IN INCHES AND INCLUDE CHEMICALLY APPLIED OR PLATED FINISHES	
DECIMALS	FRACTIONS
.X ± .05	± 1/64
.XX ± .01	ANGLES
.XXX ± .005	± 0° -30'
MATERIAL #18 GAGE STEEL	
FINISH SEE NOTE	

QTY. REQ.	ITEM	PART NO.	DESCRIPTION	SYMBOL
LIST OF MATERIAL				
<small>FINAL APPROVAL</small> <i>GDR</i> <small>DATE</small> 7/10/77 <small>MECH. DES.</small> <small>DATE</small> <small>ELECT. DES.</small> <small>DATE</small> <small>CHECKED</small> <small>DATE</small> <small>DRAWN</small> G.D.L. <small>DATE</small>				
THE TECHNICAL MATERIEL CORP. MAMARONECK, NEW YORK ANTENNA CASE MACHINING (COVER)				
SIZE	CODE	IDENT NO.	DWG NO.	ISSUE
D	82679	MS6671		Ø
SCALE 1/4				SHEET 3 OF 3