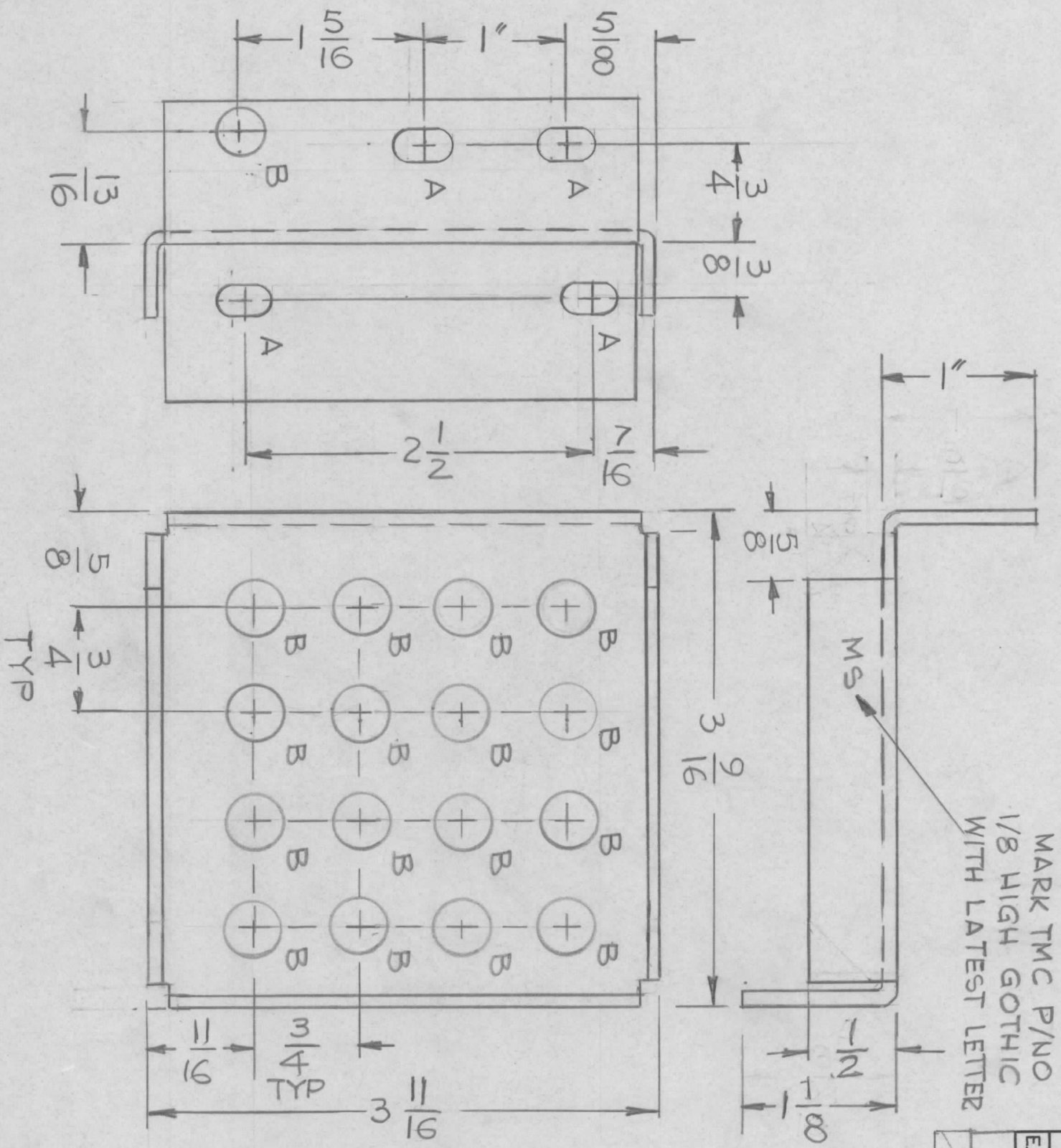


REVISIONS							
EM.N. NO.	DRAFT	CHKD	ZONE	LTR	DESCRIPTION	DATE	APPROVED
	GDL				REDRAWN WITH CHANGE	6-15-76	
					ORIGINAL Release	1-10-77	*



HOLES :  
 A - 1/4 X 3/8 SLOT 4 REQ  
 B - 7/16 DIA 17 REQ

MS 6667-1 AS SHOWN 1 REQ  
 MS 6667-2 MIRROR IMAGE 12 REQ

QTY / UNIT	1	MODEL USED ON	TOC-25-1	ASSY NO.	
APPLICATION		CODE			

NOTICE TO PERSONS RECEIVING THIS DRAWING  
 THE TECHNICAL MATERIEL CORPORATION claims proprietary right in the material disclosed hereon. This drawing is issued in confidence for engineering information only and may not be reproduced or used to manufacture anything shown hereon without permission from THE TECHNICAL MATERIEL CORPORATION to the user. This drawing is loaned for mutual assistance and is subject to recall at any time.

DECIMALS	X ± .05	TOLS.	1/64
FRACTIONS	.XX ± .01	ANGLES	0° - 30'
	.XXX ± .005		

UNLESS OTHERWISE SPECIFIED DIMENSIONS ARE IN INCHES AND INCLUDE CHEMICALLY APPLIED OR PLATED FINISHES  
 MATERIAL - 081THK  
 ALY 5052-H32  
 FINISH 5404  
 YEL IRIDITE

REQ'D	ITEM	PART NUMBER	DESCRIPTION	SYM.
			BRACKET, RETAIN.	

FINAL APPROVAL	MECH. DES.	DATE	DATE
		1-10-77	
ELECT. DES.	CHECKED	DATE	DATE
		6-15-76	

THE TECHNICAL MATERIEL CORP.	MAMARONECK, NEW YORK
CODE IDENT. NO.	DWG NO.
B 82679	MS 6667
SCALE 1:1	SHEET OF
	ISSUE
	0